

SPRING 2020

STYLE ■ COMFORT ■ IDEAS ■ REAL ESTATE

ourhomes

G R E Y & B R U C E C O U N T I E S

TEAM *building*

decorate
WITH PANTONE'S
COLOUR OF
THE YEAR

FRANK
LLOYD WRIGHT

inspired retreat

design
DETAILS

RAISING
BUTTERFLIES

SOUTHERN
SALAD



OUR ROOTS RUN DEEP.



The natural choice in stone

Our products can be found on homes and businesses throughout the Grey/Bruce region. Our roots are here and we are proud to have provided you with quality products and service for over 70 years. Please visit us or our website and experience how we can bring your inspiration to life.

www.shouldice.ca

LANDSCAPES | DOCKS | SHORELINE RESTORATION

Beyond expectations

Confront the wilderness of our world on your own terms. Challenge the waters of Georgian Bay with your kayak, sit back and let the sound of the water relax you, gather with your loved ones around the fire or bask in the majestic beauty of the sunset. With Hutten & Co, you can have it all – without the fuss that often comes with construction. You have our word.



Go ahead, see what's possible at hutten.ca

Hutten & Co
LAND and SHORE

**& beautiful kitchens & baths
endless possibilities**



POLISHED STONE CREATIONS

is your local source for custom Granite, Marble and Quartz countertops. As a family owned and operated business, we are committed to providing quality workmanship and customer satisfaction. Bring us your ideas and our friendly staff will help make your vision happen. Natural stone is a beautiful and durable way to personalize your dream kitchen or bathroom.

Colour and material selection can be done on-site from our stock of 40 Granite colours. We also offer our customers a wide selection of Quartz surfacing including Hanstone, Caesarstone and Silestone. Or choose from a large selection of Granite remnants that can be used for vanities, fireplace surrounds, accent pieces or just about anything else you can imagine.

To help make The Old Barn a one stop shop, we offer a full line of stainless steel kitchen sinks, porcelain vanity sinks and faucets from Bristol Sinks.

Come visit us today!

**Your local source for
Granite, Marble
& Quartz Countertops**

16 Celebrating
years
of business excellence!



173480 Mulock Road (between Durham & Hanover)
519.369.1710

theoldbarngranite.ca





COLOUR OF THE YEAR 2020

FIRST LIGHT
2102-70

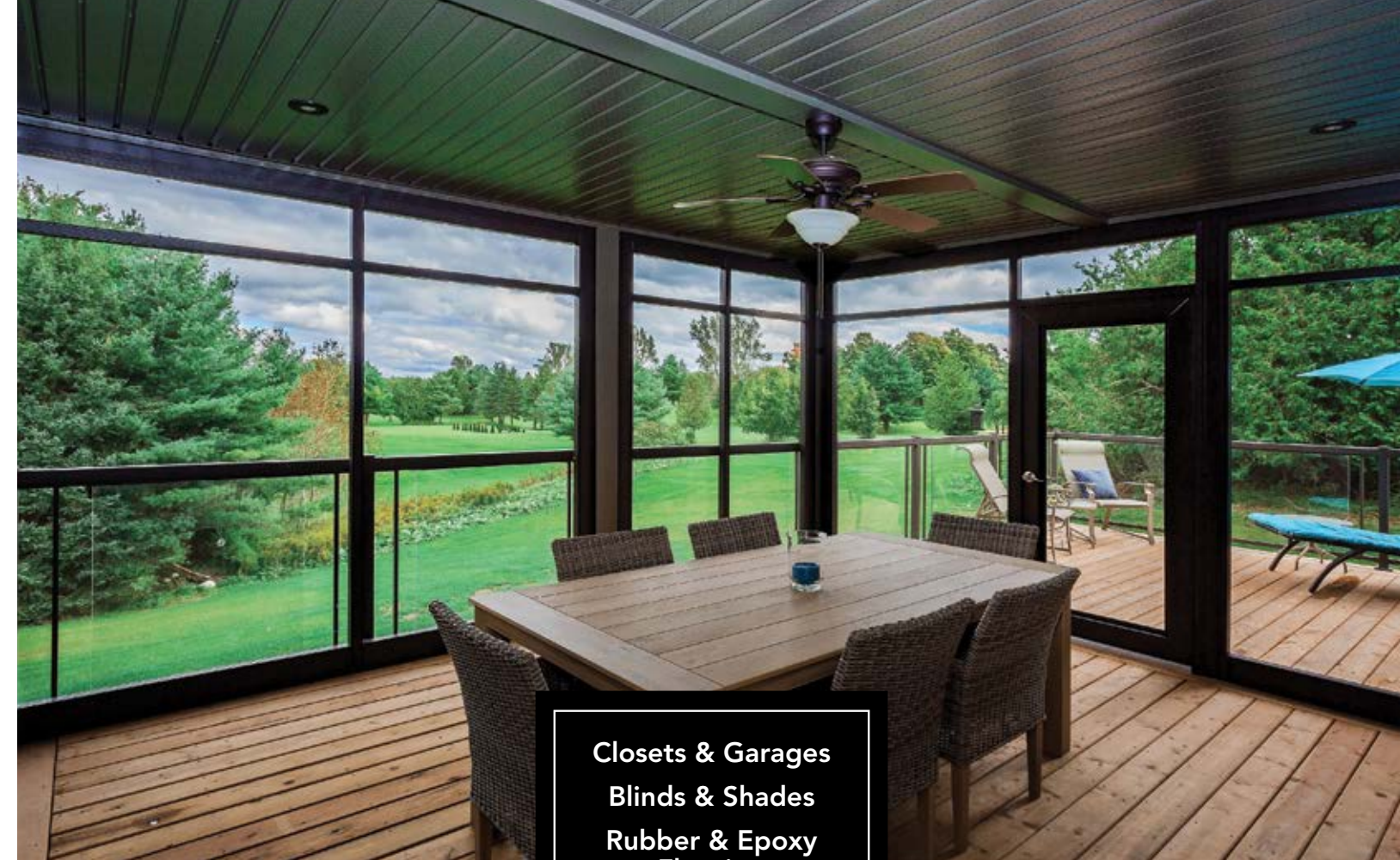


VISIT US TODAY:

HANOVER **Cuneo's Carpet One Floor & Home**
873 10th St | 519.364.1303 | cuneointeriorscarpetonehanover.com

SOUTHAMPTON **Martin's Home Hardware**
236 High St | 519.797.3645 | martins.ca

WALKERTON **Cuneo Interiors**
207 Durham Rd E | 519.881.2170 | cuneointeriorscarpetonehanover.com



Closets & Garages
Blinds & Shades
Rubber & Epoxy
Flooring
Enclosures & Awnings
Decking & Railings
& More!



your **HOME EXTRAS**
S P E C I A L I S T S



Contact us for a free estimate.
We'll create a 3D model to
help visualize the end result.

P 519.369.8225

info@wilsonsolutions.ca

wilsonsolutions.ca/ourhomes



Luxury Woodworking

True Canadian ^{🇨🇦} *Craftsmanship*

130 Kincardine Hwy., Walkerton | 519 507-1846 | LuxuryWoodworking.ca



Furnaces | A/C's | Fireplaces
Geothermal | Water Treatment Systems
Ductless Systems | BBQs | ...& more!



SOUTH-PORT **MECHANICAL** **GEOTHERMAL**



style | performance | quality
all your home comfort needs

Come visit us at 1362 Concession 9, Kincardine 519-396-2665

south-portmechanical.com



Personalized to Perfection

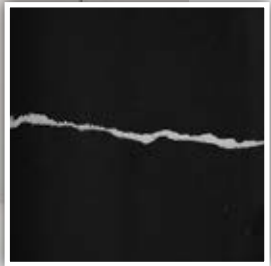
EXCLUSIVELY AT DI PIETRA DESIGN



CALACATTA ORO



CALACATTA NUVO



NERO MARQUIS



BELLISSIMO

DPD
DI PIETRA DESIGN
COUNTER TOPS



Choose From Our Best Selling Line Of Quartz
Our Quartz Tops Are On Average 30% Less Than The Leading Competitor!

705.727.0096 | 672 Welham Rd - Barrie | www.dpd360.com




CHANTICO
FIREPLACES

Chantico Gallery
209784 Hwy 26
Blue Mountains, ON
705.445.9688

Chantico Countryside
158185 7th Line
Meaford, ON
519.538.4112

Stu's Stove Shoppe - Chantico
6 Ashfield, Huron Townline
Kincardine, ON
519.395.0740

ChanticoFireplaces.com
SALES . INSTALLATIONS . SERVICE

ESTABLISHED 1989

THE GREAT LAKES

Frame Company

f

YouTube

Exquisite handcrafted timber frame homes

519.794.0400 WWW.GREATLAKESFRAME.COM

CMR

INSURANCE

Erin McConnell Kenny, CAIB

Registered Insurance Broker

emcconnell@cmrinsurance.com

519-889-2889

Rebecca Matches, CAIB

Registered Insurance Broker, Individual & Group Life Advisor

rmatches@cmrinsurance.com

519-477-1473

www.cmrinsurance.com

ourhomes®

GREY & BRUCE COUNTIES

STYLE • COMFORT • IDEAS • REAL ESTATE

REGIONAL PUBLISHERS

Jamie Jefferson
Georgette McCulloch

REGIONAL MANAGING EDITOR

Sara Martin

REGIONAL PRODUCTION MANAGER

Kelly Donaldson

MARKETING & ADVERTISING

Betty Ann Fawcett, 519.372.6338
bettyann.fawcett@ourhomes.ca

DISTRIBUTION

Allan Fawcett, 519.986.2599

REACH US EASILY: firstname.lastname@ourhomes.ca

OUR HOMES is a registered trademark of OUR HOMES MEDIA GROUP INC.
OUR HOMES Grey & Bruce Counties is published four times a year.

OUR HOMES is distributed to residents of Grey & Bruce Counties and to cottagers via direct mail. Copies of OUR HOMES are available for free pick up at high traffic locations throughout the region. Copies of OUR HOMES are also sent via direct mail to members of select ski clubs in the region. OUR HOMES is distributed throughout select B&Bs and hotels, and to select business leaders via direct mail.

OUR HOMES Media Group Inc. is a proud member of the
Owen Sound and District Chamber of Commerce.

Please send all letters and/or feedback to OUR HOMES Magazine, 25 Elgin St., Collingwood, Ontario, Canada L9Y 3L6. Or email us at editor@ourhomes.ca.
All letters received are subject to editing for grammar and length.

OUR HOMES MEDIA GROUP INC:

EDITORIAL

EDITOR-IN-CHIEF

Georgette McCulloch

ASSOCIATE EDITOR

Kristin Schnelten

DIGITAL EDITOR

Rachael Havens

MANAGING EDITORS

Nancy Belgue, Liz Bruckner,
Walter Franczyk, Mary Hatt,
Cheryl Long, Gina Makkar,
Sara Martin, Tiffany Mayer,
Georgette McCulloch, Melissa North,
Merrilyn Patterson, Heather Wright

ART

ART DIRECTOR

Tara Chattell

ASSOCIATE ART DIRECTORS

Sheila Britton, Robynne Sangiuliano

DIRECTOR OF PHOTOGRAPHY

Jason Hartog

PRODUCTION

PRODUCTION DIRECTOR

Lynn Derrick

PRODUCTION MANAGERS

Julia Dempsey, Kelly Donaldson,
Marilyn Reid, Tracy Shuttleworth

OPERATIONS

MANAGING DIRECTOR, SALES & MARKETING

Jamie Jefferson
jamie.jefferson@ourhomes.ca

MANAGING DIRECTOR, OPERATIONS

Georgette McCulloch

ACCOUNT EXECUTIVE & DIRECTOR OF DISTRIBUTION

Lisa Ormsby

REGIONAL ACCOUNT EXECUTIVE

Suzanne Strong

BUSINESS DEVELOPMENT

Kelly Craig

ACCOUNTING

Tyler Annette

ACCOUNTS RECEIVABLE

Cindie Tonon

CONTRIBUTORS

Sheila Britton, Stephani Buchman, Tara Chattell, Andrea Colman, Bonnie Fox, Walter Franczyk, Jason Hartog, Connie Jeske Crane, Sandy MacKay, Sara Martin, Dawn McConnell, Jenelle McCulloch, Tamarisk McNalty Stephens, Amanda Moore, Dolores Pian, Melanie Rekola, Barrie Robinson, Kristin Schnelten, Sarah Tacoma

Advertisements and the content, including photos, of advertisements published within OUR HOMES magazine are supplied solely by the advertiser and neither the publisher nor OUR HOMES Media Group Inc. accept responsibility for opinions expressed in advertisements or for copyright issues with regards to photos, advertising copy and advertisements, nor shall they be held liable thereby. By act of reading this publication, all advertisers and readers agree to indemnify and hold harmless both OUR HOMES Media Group Inc., and the publisher thereby. Copyright ©2020 OUR HOMES Media Group Inc. All rights reserved. Reproduction without permission is prohibited.

OUR HOMES CAN BE FOUND IN THE FOLLOWING MARKETS:

• Barrie/Orillia/Midland • Grey Bruce • Hamilton • London • Muskoka

• Niagara • Oakville/Burlington/Mississauga • Ottawa • Peterborough

• Southern Georgian Bay • Toronto & York Region • Region of Waterloo

• Wellington County/Orangeville/Caledon • Windsor

MIX
Paper from
responsible sources
FSC® C148846

PRINTED
IN CANADA

CMCA
AUDITED

LIST
LOCAL

CHESTNUT PARK™
REAL ESTATE LIMITED, BROKERAGE

CHRISTIE'S
INTERNATIONAL REAL ESTATE

MARKET
GLOBAL

Think Spring With
Chestnut Park

Think... LOCAL EXPERTS WITH A GLOBAL REACH

Our affiliation with Christies International Real Estate is an exclusive relationship afforded to our Sales Representatives, Brokers and their clients.

Think... STELLAR REPUTATION

We are proud to be celebrating our 30th year as a Canadian owned and managed company with over 350 Sales Representatives and Brokers in Prime Urban and Recreational markets across Southern Ontario.

Think... EXCELLENCE IN SERVICE AND CLIENT DEDICATION

The combination of our Stellar Reputation, Local Expertise, Meaningful Community Connections and Innovation makes Chestnut Park a Luxury Leader in Real Estate Sales and Marketing.

With the Spring Market just around the corner, it's not too soon to call us!

CHESTNUT PARK REAL ESTATE LIMITED, BROKERAGE | CHESTNUTPARK.COM

OWEN SOUND
519.371.5455

WIARTON
519.534.5757

BARRIE/COLLINGWOOD
705.445.5454

TORONTO | 416.925.9191

FOREST HILL | 647.347.8500

PRINCE EDWARD COUNTY
613.471.1708

HALIBURTON | 705.754.0880

PETERBOROUGH / THE KAWARTHAS
705.652.5000

MUSKOKA / PORT CARLING
705.765.6878

MUSKOKA / FOOT'S BAY | 705.375.9191

LAKE OF BAYS / HUNTSVILLE / ALMAGUIN
705.789.1001

GRAVENHURST | 705.684.9087

ERIN / CALEDON / MONO
519.833.0888

LAKE SIMCOE / NORTH OF MARKHAM
89.338.0767

STRATFORD / HURON-PERTH
289.338.0767

NORTHUMBERLAND COUNTY
905.800.0321

KITCHENER / WATERLOO*
519.804.7200 *Affiliate Office



I RECENTLY HAD THE PLEASURE OF ATTENDING

an evening meeting of the Grey Bruce Home Builders & Trades Association. Photographer Sarah Tacoma and I photographed each of the directors for our People Feature on page 82.

I saw many familiar faces – builders and tradespeople I’ve met in my travels for the magazine. Although I was working, the atmosphere and mood was casual and relaxed.

At this particular meeting, Nick Evans from the Ministry of Labour discussed safety issues. It was a great opportunity for members – including OUR HOMES representative Betty Ann Fawcett – to meet Nick, ask questions and then enjoy a delicious dinner (yummy chicken parmesan) and lively conversation.

If you own a business associated in any way with the busy and growing building industry in Grey Bruce, I urge you to join the GBHBT. The Association speaks to all levels of government. It’s a place to learn about new codes and technology and is a forum to exchange ideas and information with other members. The night I attended was a very positive evening.

The busy Grey Bruce building industry has been well-represented in the three home features across both counties in this issue. One

home near Lion’s Head was built by And-Rod Construction Ltd. right on the water, another home built by Alair Homes backs onto the golf course at Lora Bay, and the third, a Candue Homes build, is just outside of Durham. The stories reinforce how the all-important relationship and communication between builder and homeowner lead to incredible results.

Happy Spring!

Sara Martin

Sara Martin, Managing Editor
sara.martin@ourhomes.ca

Follow us   

Sign up for our newsletter ourhomes.ca/newsletter

online Get more at ourhomes.ca



Welcome Spring!

And welcome back to Port Elgin's **Garden Centre!**

Featuring Premium Quality Annuals, Perennials & Shrubs by **MarksChoice.**

PORT ELGIN
 **Home**
hardware
building centre



Fertilizers, Soils & Garden Mulches
Garden Decor, Tools & Lighting
Toja Grid Garden Pergola Kits
Barbeques & Patio Furniture
Deck Boxes & Rain Barrels
Weekly Specials & More!



924 Goderich Street, Port Elgin 519-832-2466

CONTENTS

SPRING 2020



100

40



66

ON THE COVER

It's all about the views in this immaculate Lora Bay home. Story, page 40.
Photography by Sandy MacKay.

62



24

LOCAL FEATURES

- 24 Style Picks** Add a touch of green to your home.
- 40 Home & Builder** It takes a team to create a masterpiece fit for easy living.
- 62 Spotlight** Visit Van Dolder's Custom Exteriors Home Team for extraordinary curb appeal.
- 66 Home & Builder** A simply modern summer retreat on the peninsula.
- 82 People** Meet the Grey Bruce Home Builders & Trades Association's executive.
- 100 Feature Home** Great things happen when you trust your builder.



DETAILS THAT GET NOTICED

Exquisite

Wood Design Inc.

Your custom Kitchen specialist!

519.370.0808 1980 20th St. East, Owen Sound ewdesigns.ca

CONTENTS

SPRING 2020



80

116



96



124

DEPARTMENTS

- 16 **Editor's Note**
- 22 **Advice** Laundry Day
- 28 **Good Taste** Pear Spritzer
- 30 **Gardening** Beautiful Butterflies
- 32 **In The Kitchen** Appliance Style
- 38 **Crafty Ideas** Signature Tea Towels
- 52 **Focus** So Many Colours
- 54 **Double Take** Living Room Goals
- 56 **Design Ideas** Slow Living
- 58 **Decorating** Travel the World
- 78 **Real Estate** Reno Contracts
- 80 **Cooking At Home** Peachy Salad
- 96 **Gardening** Off the Wall
- 116 **Projects** For The Birds
- 120 **Home Resource Directory**
- 122 **Green Living** Electric Vehicles
- 124 **Finishing Touch** Happy Blues



30

Peace of mind is a beautiful thing

Cambria® offers superior craftsmanship, exquisite beauty, and legendary durability for life. All backed by a Full Lifetime Warranty. Discover your new Cambria kitchen or bath at Elegant-Solutions.ca



C A M B R I A



HUNTLEY™



C A M B R I A
SLAB GALLERY

By Appointment Only

*elegant*solutions

Custom Cambria Quartz Surfaces

12 Sarjeant Drive, Barrie | 705-797-0114 | Elegant-Solutions.ca

LAUNDRY Day



Interior Designer
Dolores Pian
shares her ideas.

Does laundry need to be a dull and mundane activity? Give your clothes the extra attention they deserve by designing a laundry room you actually want to work in. Here's some great advice to make laundry day a little easier and a lot more fun.

LOCATION, LOCATION, LOCATION

While the basement is still the most popular place for laundry rooms, the lower level has risen above its former dungeon status by using good lighting and well-appointed cabinets.

And in what other spaces can we find laundry facilities?

The kitchen – European kitchens have housed laundry appliances for decades. Tucked away inside cabinetry, they share common elements, such as sinks and countertops.

The bathroom – Sliding barn doors allow access to appliances while items can transition in and out of your closets.

Tucked away in the second-floor hallway – Most of the laundry originates on this floor. Using an otherwise unproductive corridor for access to the washer and dryer keeps laundry close to its point of origin.

Mudrooms or back door entry areas – Combine these hardworking spaces with other wet functions such as a pet-washing station. Slushy winters, wet pool parties and wet doggies produce wet clothes and towels, making washing and drying them more efficient.

Wherever your laundry room is, the finishes need to coordinate with the kitchen, bathroom and the rest of your home's stylish design.



WHAT OTHER ITEMS LIVE IN THE IDEAL LAUNDRY ROOM?

- 🔧 Deep apron sink for pre-soaking or hand-washing delicates and sweaters.
- 🔧 Drying racks, sliding or drop-down, for delicates and sweaters.
- 🔧 Ironing boards and a clothing steamer.
- 🔧 Hanging rods – accordion or stationary.
- 🔧 Roll-out hampers and baskets for pre-sorting laundry.
- 🔧 Spray attachment for spot treatments.
- 🔧 Bright, dimmable, warm-white LED lighting.
- 🔧 Brooms, vacuums and cleaning supplies.

KEY FUNCTIONAL CONSIDERATIONS

Seasoned contractor Dan Robinson has this advice for laundry room construction:

Build an accessible washer outlet box, which hides pipes and keeps hoses neat.

Vent piping to the outside with minimal bends and turns to prevent lint build-up and dryer fires.

Install a bathroom fan to minimize humidity.

Use solid pipe rather than the white flexible accordion type. This enables you to push the washers and dryers closer to the wall for a tighter installation.

Build a false wall or enclosure to hide piping from view.

Have a contractor install your washer and dryer. They'll minimize the big gap at the back. Others may pay less attention to space requirements.

Ventless dryers are a great option, too.

Above all else, maintenance is important. Lint builds up over time, blocking vents. Clean your vents regularly!

A SPECIAL, UNCOMMON TOUCH

Add some panache to your unique laundry experience.

Consider making the laundry area an integral part of the house with window treatments, wallpaper, plants (they'll love the humidity), outdoor area rugs, glamorous pendant fixtures and the same gorgeous materials for counters, backsplash and flooring, making it Instagram- and Pinterest-worthy.

Style and function are always in fashion. Even for the humble laundry room. **OH**



SG
South Gate Cabinets Inc.

Custom kitchens,
cabinets & millwork

Individually designed
to meet your needs

Quality design,
manufacturing
& installation

827470 Grey Road 40
The Blue Mountains

Follow us on our Facebook
page for more details.

www.southgatecabinets.com

1-866-929-9933



ENERGY SAVINGS REBATE PROGRAM
25% off on select washers, dryers and dishwashers.
A program of the Government of Canada | Canada

SQUARE DEAL NEIL'S
TV & APPLIANCES
For over 60 years!

SALES & SERVICE • NEW & USED
Hwy 21, Southampton 519-797-3905
www.squaredealneils.ca
Large enough to serve you, small enough to care!



1

1 PENINSULA OUT OF DOORS
Bougainvillea
The greenhouses at Peninsula Out Of Doors are brimming with colourful annuals, planters, tropicals, succulents, perennials and starter plants for your vegetable garden. An incredible selection of climbing vines, such as these bougainvillea, are also available.
14 Budvet Rd., Lion's Head
519.793.3979 | penoutdoors.com

2 HOUSE RULES DESIGN SHOP
Wallpaper & Fabric
Green is considered the most restful colour, representing renewal, energy and harmony. Let the expert designers show you how to add green into your home.
341152 Grey Rd. 28, Hanover
226.434.1234 | houserulesdesign.com

3 FULFORDS HARDWARE
Food Storage System
The Smart Turtle by Fosa is a battery-operated vacuum pump that removes air from its corresponding storage containers and bags. It's easy to use and your food products will last much longer.
874 2nd Ave. E., Owen Sound
519.376.7729 | fulfords.com

4 BUILT WRIGHT FENCING
Privacy Panels
A sophisticated design for privacy and shade around a hot tub, fire pit or deck. These laser-cut panels offer a stylish option, are low-maintenance and can be combined with many different materials.
519.387.5022 | builtwrightfencing.ca

5 THE FYRE PLACE & PATIO SHOP
Outdoor Furniture
Add these bright, comfortable Adirondack Sling Chairs to your outdoor space. Available in many colours, they will be perfect for sitting once the spring chores are done.
717861 Hwy. 6, Springmount
519.371.2963 | thefyreplace.com

6 COUNTRY CHARM MENNONITE FURNITURE
Table
This beautiful farmhouse style, reclaimed Elm table is ideal for an entrance hall or dining room. It can seat six people and the Roanoak maple base can be ordered in custom colours.
317680 Hwy 6 & 10, Owen Sound
519.376.4434 | ccharm.com

Continued on page 26



2



3



5



4



6

GO PHOTOGRAPHY **SARAH TACOMA**
green

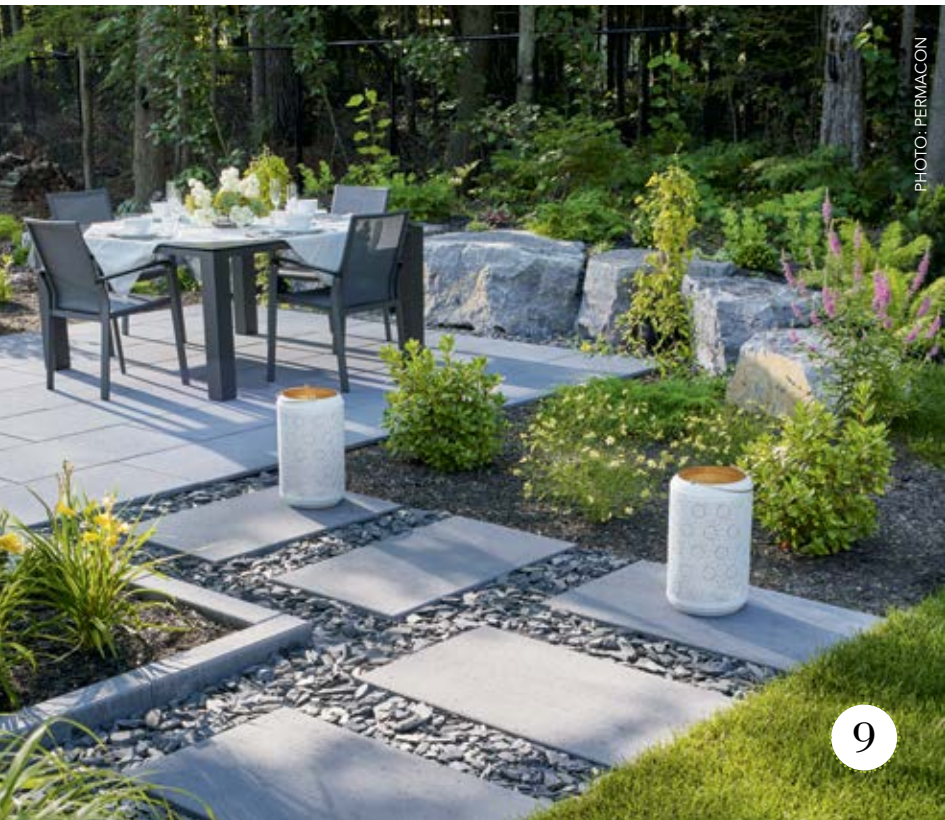
Have a restful and relaxing spring with these fresh picks.




7 PORT ELGIN HOME HARDWARE BUILDING CENTRE
Spring Grass Care
The perfect green, lush lawn is one stop away. Get everything you need for fertilizing, overseeding and weeding, plus expert help. Your lawn will thank you.
924 Goderich St., Port Elgin
519.832.2466 | homehardware.ca


8 MAXWELL GARDEN CENTER
Garden Shed
This cabin-style shed with a veranda is one of many available. It's locally built and superbly crafted. If you don't see the design or size you need, they're happy to quote on custom projects.
453897 Grey Rd. 2, Maxwell
519.922.1479 | maxwellgardencenter.com

9 WEST SHORE STONE & BRICK INC.
Stone
With a large inventory of brick, stone and landscape products, finding the best materials is easy. The knowledgeable staff will answer any questions and help you select the best product for your project, big or small.
2047 Concession 12, Ripley
519.395.2747 | westshorestoneandbrick.com OH





Craig Gallery



PAINTING BY PHILIP CRAIG

www.craiggallery.ca
4 Sykes St. N Meaford | 519-538-3671

...just what you need.





Home Decor & More

20 Balsam St., Collingwood - 519.447.0053
1000 10th St. W., Owen Sound - 519.447.0052
29 Young St., Alliston - 416.936.2263

 Visit us often!
Inventory & selection changes frequently.

Specializing in Quality North American Casual Furniture





Since 1973

Located at Highway 6 & 21, Springmount (Near Owen Sound)
519.371.2963 | www.thefyreplace.com

good taste

PEAR & GINGER Spritz



RECIPE AND PHOTOGRAPHY
JENELLE MCCULLOCH

This light and spritzzy cocktail combines spicy ginger and sweet pear. Top with some bubbles and enjoy.

INGREDIENTS

(per cocktail)

1 oz pear juice

1 oz ginger syrup

1 oz pear liqueur

4 oz dry sparkling wine

ice

GINGER SYRUP

Over medium heat, combine 1 cup sugar and 1 cup water in a saucepan.

Peel and slice a large chunk of ginger and add to the pot.

Bring to a boil and simmer 30-45 minutes.

Let cool and strain through a fine-mesh strainer.

Cover and refrigerate until ready to use.

PREPARE DRINK

Over ice, combine pear juice, ginger syrup and pear liqueur.

Top with sparkling wine and garnish with a pear slice. **OH**

You can't be too *Cool!*

YORK
INSTALL CONFIDENCE.
*Beat the rush.
Beat the heat.*
Call today to book your
spring installation and
be Summer ready!

**AIRTECH
MECHANICAL**

HEATING • AIR CONDITIONING • VENTILATION SYSTEMS
519-934-3358
117064 Grey Rd.3, Keady www.air-tech.ca

**AEONIC
KITCHENS**

Quality craftsmanship for any space. 20 years combined experience.

6606 Line 87, Listowel 519.472.0326 aeonickitchens.com

STORY AND
PHOTOGRAPHY
MELANIE REKOLA

homegrown MONARCHS

The rapid decline of the monarch butterfly population has received much publicity in recent years, and you may have noticed how rarely you spot one compared to years past. Many factors affect this gorgeous but sensitive species, including climate change, habitat loss and herbicide or insecticide spraying. Current studies show that, if existing trends continue, monarch populations could face migratory collapse within the next 20 years. Want to give these stunning creatures a much-needed helping hand? There are several ways to help ensure a brighter future for monarchs.

1 Plant milkweed

Milkweed is beautiful, easy to grow and the only plant monarch butterfly larvae (caterpillars) can consume. Planting milkweed provides sustenance for monarch caterpillars via the leaves, and adult monarch butterflies via the flower nectar. Choose from these native varieties:

Common milkweed – *Asclepias syriaca*
Swamp milkweed – *Asclepias incarnata*
Butterfly milkweed – *Asclepias tuberosa*



2 No herbicides or insecticides

Both caterpillars and butterflies are extremely sensitive to chemicals. Even a small amount can affect the caterpillar's ability to grow and form a chrysalis. Make your property a safe haven for butterflies as well as all life.

3 Plant nectar plants

Flowers provide necessary nectar for hungry butterflies. Large flat or umbel blossoms found on black-eyed Susan and Echinacea act as landing pads, making it easy to access the flower's nectar. Some other great choices are liatris, Aster, sunflower and goldenrod.

4 Raise monarch butterflies at home

Raising monarchs at home is a wondrous and rewarding experience! Read my guide to get started.



BEGINNERS' GUIDE TO RAISING MONARCHS AT HOME

Nurturing monarch caterpillars in the home environment is easy once you understand their lifecycle. They have four stages: egg, larva, pupa and adult butterfly.

The adult butterfly lays eggs on the milkweed, and within four days the eggs hatch to form a caterpillar, which survives by consuming the milkweed. During this stage caterpillars are extremely susceptible to predation, with only a 2 per cent survival rate. Their predators include birds, ants, spiders, praying mantis, stink bugs and frogs. Within two weeks, the caterpillar attains full growth and transforms into a pupa (or chrysalis). The monarch begins this miraculous process by making a silk button and attaching it to a leaf or stem (or part of an enclosure), then it hangs in a "J" formation for about 12 hours before making its chrysalis. In the next 10-14 days a continuous process of metamorphosis occurs. Once complete, the adult butterfly will emerge, called "eclosing."

FOOD

Milkweed is the only food that can sustain monarch caterpillars. Although it's best to grow your own milkweed from seed to ensure it's free of chemicals, foraging is also possible. Stick to natural areas away from roads and industrial places, and search for plants housing other insects – it's a good sign the plants have likely not been sprayed. The best way to keep milkweed leaves fresh is to use milkweed cuttings. Cut the top portion of the milkweed plant, including a few sets of leaves and stem. Place the stem in water to keep the leaves fresh for days. A tight-mouthed glass bottle works best, to prevent caterpillar drownings.

HABITAT

I like to use fine mesh enclosures. Place enclosures on a screened porch, or indoors near a window with sunlight but no direct sun. You'll need at least two enclosures – one for caterpillars and one for chrysalises, as butterflies can sometimes carry diseases that can affect the caterpillars. (Once a chrysalis has formed and hardened for 2 days it can be safely moved and attached to the separate enclosure.) Caterpillars are eating machines and produce a lot of poop, called frass. You can line the bottom of the enclosure with paper towel and replace daily or use a keyboard vacuum to remove the frass.

EGG & CATERPILLAR HUNTING

It's fun to hunt for eggs and caterpillars! If you find either, take them in right away to avoid predation.

RELEASE

After a butterfly ecloses from their chrysalis, they need to dry their wings for 4 hours before releasing. This gives them their best chance to survive, mate and begin the cycle again.

TROUBLESHOOTING

Not all caterpillars will survive. Just like the outdoors, your indoor environment needs to be chemical-free (even topical flea and tick formulas for your pets can kill caterpillars). They can also fall prey to parasitic flies, wasps and other diseases. A great place to ask questions and get all the pertinent info is the Facebook group The Beautiful Monarch. Hope to see you there! **OH**

in the kitchen

COOKING UP SOME *Style*



PHOTO: STEPHAN BUCHMAN



STORY **ANDREA COLMAN**

FRIDGE

Whether it's for function or just bragging rights, LG is a great brand to check out if you want bells and whistles. LG's counter-depth french-door refrigerator comes loaded with plenty of extras, such as the smart InstaView door design, which lets you view your refrigerator's contents through a tinted glass panel with a tap of the glass. The door-in-door is another cool bonus feature that puts drinks, snacks and other often-grabbed-for items easily on hand, organized in their very own independently accessible compartment tucked behind the main panel. Oh, and this fridge is WiFi connected.

Continued on page 34



Spring is prime time to plan your next renovation, just in time for the busy summer season ahead. It's true that kitchens give you the best return on your investment, but they're also the most expensive room to renovate, so it pays to do your research, work with a professional and don't let your appliances become an afterthought. Appliances are an expensive part of the project, and they can often be worked into the plan from the ground up. The result is a seamless space with fashion and function built right in. Here are some essential appliances to raise the bar on your kitchen design.

Desboro DOORS
Custom Exterior & Interior Doors

The Doorway to Your Dream Home Awaits!

**Custom Glass & Casing
Wood Finishing • Custom Designs
All Wood Types Incl. Reclaimed Lumber
Installation**

Tel: **519.363.5635**
www.DesboroDoors.com
info@desborodoors.com
135830, R.R. 1 • Concession 8 • Desboro, ON

HOUSE RULES

BOOK A DESIGN CONSULTATION WITH
ONE OF OUR DESIGNERS TODAY

FLOORING LIGHTING PLUMBING FURNITURE TEXTILES PAINT

13555 Bruce Rd. 10
Hanover, Ont.
226-434-1234
info@houserulesdesign.com
www.houserulesdesign.com

Fulfords
Kitchenware • Bathware • Hardware

Where Great Bathrooms Begin

874 2nd Ave E, Owen Sound, ON
519.376.7729 — 888.666.6618
www.fulfords.com

in the kitchen

THE “WINE WALL” IS THE NEWEST APPLIANCE TRENDING IN KITCHENS FOR 2020



The Renoir Wine Displayer by Silhouette

STOVE

The stove is the focal point of many kitchens, so choose a design that checks all the boxes on your must-have list. It should be efficient, simple to use and easy on the eyes. The Deco range from Italian brand Superiore is a stunning stove with beef – measuring 6.7 cu. ft., with a six-burner gas stovetop and packing an electric oven. Choose from black, brown, red or white (matte finish optional), with gold or bronze hardware. If speed speaks to you, then the Viking TurboChef Speedcook Oven will change your life. This classic-style, stainless steel wall oven cooks food 15 times faster than conventional ovens, putting a 12-pound turkey from fridge to table in 42 minutes flat.



WINE STORAGE

The “wine wall” is the newest appliance trending in kitchens for 2020, and a common addition in many renos and redesigns. Functionally speaking, you can collect and store a lot of bottles at a consistent temperature. From an aesthetic standpoint, this appliance is sophisticated and cool – and who doesn’t need more of that in their life? The Renoir Wine Displayer by Silhouette will artfully display 30 bottles and can be framed for a custom look. The manufacturer recommends professional installation, so it’s a good idea to loop your renovator in on the process. When a wall unit isn’t part of the vision, consider a traditional wine fridge as a great affordable alternative that will go a long way. Danby offers a wide range of sizes, perfect for entertaining with large islands, with capacity range anywhere from 17 to 75 bottles. Tucked out of sight under a counter, your wine collection will be your best-kept secret.



ESPRESSO MAKER

No kitchen is complete without a great-looking coffee machine. The Breville Oracle Touch espresso maker has a solid visual weight that commands attention on a countertop. Encased in a brushed stainless steel or contemporary Black Truffle finish, this fully automated machine features a digital screen that visually instructs you step by step, from grind to brew to milk. You can save up to eight custom coffee variations for the perfect cup every time. You’ll use it more than you think.



The modern kitchen today is about having your cake and eating it, too. In design speak, that means your selections should function well, look great and above all function and make your life easier, if not more enjoyable. It might not be feasible to go all out on every appliance, but treat yourself and splurge on a piece that truly has it all. You won’t regret it! **OH**



DESIGN BUILD LOVE

Bruce County CUSTOM CABINETS

519.483.1188
brucecountycustomcabinets.ca

K

INTERIORS
519.832.7040
kaitlynshular.com

DENNISON
HOMES

519.483.1199
dennisonhomes.ca

Visit us at our showroom! | 1211 MacKenzie Rd. in Port Elgin | Open Mon. – Fri., 8am – 3:30pm



CABINETRY | QUARTZ , WOOD or LAMINATE TOPS | STAINLESS or SILGRANIT SINKS

APPLIANCES | FLOORING | BACKSPLASH | LIGHTING (HUE) | BEAUTI-TONE PAINTS



Looking for kitchen inspiration? Visit us for one-stop shopping.

From *Value* to *Luxury*.



Cabinetsmith
style • quality • affordability

FORMATOP



Bring in this ad for a
**FREE Standard
Laminate Top**
with the purchase of a
Cabinetsmith Kitchen.

Join us for our annual **POSSIBILITIES TOUR** Spring 2020!

Follow us for dates & details.



CABICO

elegant solutions
Custom Cambria Quartz Surfaces



Winner of the Annual Walter J. Hachborn
Store of the Year Award 2016
'Best Home Hardware Building Centre in Canada'



580 24th Avenue | Hanover | 519.364.3410



PROJECT **DAWN MCCONNELL**
PHOTOGRAPHY **TARA CHATTELL**

STAMPED

tea towels & napkins

*CREATE A CUSTOM
TEA TOWEL OR SET
OF NAPKINS WITH
A STAMP AND INK.*



- TOOLS AND MATERIALS**
- Blank tea towels and/or napkins (cotton or linen work best)
 - Permanent ink pad in a colour of your choice
 - Rubber stamp in a design of your choice
 - Cardboard or craft paper
 - Iron

- HOW-TO**
- Wash and dry tea towels and napkins to remove sizing solution.
 - Lay towel or napkin on surface covered with cardboard or craft paper. Decide where to place your pattern.
 - Apply ink to your stamp from the stamp pad. Stamp towel or napkin. Be sure to apply even pressure on the stamp and hold in place for 10 to 20 seconds to ensure the ink transfers well. Let dry.
 - Turn fabric over and press with a hot iron to make ink permanent. **OH**

Custom Built Sheds

Designed to suit your needs.
Delivered & assembled on site.

453897 Grey Rd.2, R.R.#1 Maxwell, ON
519.922.1479 | 844.564.0224
Visit our online store for more details and pricing.
maxwellgardencenter.com

The **most energy efficient** homes on the market.

Custom Home Builder
Excavating | Foundations
Septic Installations | Insulated Concrete Forms Specialist

519-377-7217 | 519-377-7331
www.HighR.ca



CUSTOM *View*

STORY KRISTIN SCHNELTEN | PHOTOGRAPHY SANDY MACKAY



"IT WAS SUCH A PLEASURE TO WORK ON THIS PROJECT, WITH GREAT HOMEOWNERS IN SUCH A BEAUTIFUL SETTING. THE VIEWS ARE JUST INCREDIBLE," SAYS BEN FREEBURN OF ALAIR HOMES GREY BRUCE.

Continued on page 43

Windows and sliding doors from Van Dolder's Custom Exteriors Home Team show off the view of Georgian Bay from the light-filled living room. All furniture, lighting and accessories were sourced through Blended Interiors. Walls are painted Collingwood by Benjamin Moore. **OPPOSITE:** Timbers from PineRidge Timberframe Inc. follow the curve of the clerestory windows. All exterior lighting was sourced at Georgian Design Centre.

Andes Summit by Benjamin Moore is the accent colour used throughout, including around the fireplace. Timeless Materials created the mantel. The console table behind the sofa was custom-made through Blended Interiors.



For **Courtney Mahon** and **Donna Hall** of **Blended Interiors**, this calming, light-filled home overlooking Lora Bay is their most extensive and satisfying project to date.

The homeowners sought design assistance on nearly every aspect of the home, from floor plans and exterior finishes to furnishings and décor. “We really had fun,” says Courtney. “They were quite open to our ideas, and so easy to work with.”

Together with the homeowners, Alair Homes and Blended Interiors spent months meticulously finalizing plans before the first shovel touched the ground.

“Alair’s process is different from most builders,” says Ben. “The decision-making process takes place ahead of time, with all quotes and markups clearly posted online for client approval. The project management software we use makes it easy to ensure the client gets exactly what they want.”

Every detail has a line item on that initial list, including finishing touches such as lighting fixtures and faucets. To assist homeowners with those decisions, Blended Interiors utilizes 3D software to model every inch of the home. “It’s so helpful to virtually

Continued on page 45



TOP: Alair Homes Project Manager Carson Blodgett and company owners Dylan Freeburn and Ben Freeburn gather at the front entrance. **ABOVE:** John Pedlar of Rock Solid Landscaping completed the landscaping, front and back. The siding is painted Wolf Gray by Benjamin Moore. **LEFT:** Tile is set into the hardwood floors from Bigelow Flooring in the front foyer and a coffered ceiling defines the foyer’s layout.



The distinctive backsplash is a focal point in the spacious kitchen. All cabinetry is by Brubacher Cabinets. Window coverings throughout are by Décor Design. The bulkhead wood accent extends into the dining room. **OPPOSITE, TOP:** A wood partition that matches the ceiling separates the kitchen and dining room. Countertops are by Cambria. **MIDDLE:** The dining table and live-edge bench have a turnbuckle detail. Blended Interiors designed the sideboard. **BOTTOM:** Donna Hall and Courtney Mahon of Blended Interiors.



walk through a space and see how light will affect a colour or a feature,” says Donna. “We can easily choose different paint, trim, stone and other details.”

Ben believes working with designers is a win for everyone: “It’s really our preferred method. This is their area of expertise, and it’s always best to go with the expert.”

Alair Homes brought together a full team of experts in their respective fields, including **Walter Campbell of Campbell Masonry**, **John Bridge Plumbing and Heating**, **G&M Electrical Mechanical**, and **Norm Aubin of Wood & Wallworks**.

“Norm Aubin at Wood & Wallworks does such an outstanding job with custom trim,” says Ben. “Their machinery allows them to create almost any profile, any piece.”

The home is filled with custom cabinetry, designed by Blended Interiors and built by **Brubacher Cabinets**. Their partnership on the many projects, including the kitchen, bathrooms, bedrooms, closets and built-in loft seating, was such a positive one that the two companies have now joined forces on forthcoming Brubacher builds.

Continued on page 46



LEFT: The master bedroom has a walk-out to a rear patio. Mechanical blinds are layered with fabric drapes. The coffered ceiling adds a luxe look in this peaceful master retreat. **ABOVE:** Brubacher Cabinets created the Caesarstone-topped double vanity in the master bathroom. **BELOW LEFT:** The laundry area is located off the garage entrance. The backsplash carries through from the kitchen. A deep farmhouse sink is a practical addition. **BELOW:** There's a handy spot to hang coats near the laundry area, with storage underneath the integrated bench. The wall treatment is reversed shiplap.



In the lower-level media room, the team worked with **Mark Aldous** at **Timeless Material Co.** to create the reclaimed wood accent wall and with **HDTV and Electronics** to complete the audio/visual system. “Mark was just amazing,” beams Donna. “He stepped in to complete so many finishing pieces, and his product and work are just outstanding.”

Timeless provided wood highlights throughout the home, including the striking ceiling feature in the office, kitchen accents and fireplace mantel. Each of the wood accent pieces works to carry the energy of the towering beams down to eye level. “One homeowner leaned toward contemporary,

Continued on page 48

floorte

- ✓ 100% Waterproof
- ✓ Pet Proof
- ✓ High Traffic

Built to endure the most demanding environment.

MILLER'S
Home
hardware
building centre
Sauble Beach
 900 Main St., Sauble Beach
 519.422.2424



Shaw
FLOORS



BRUBACHER
CABINETS

519-372-9216
 1580 20th St. E., Owen Sound

www.brubacherkitchens.ca



TOP LEFT: The second floor landing provides a quiet spot to read a book on a rainy day and it can double as an extra place for overnight guests if all the bedrooms are full. **ABOVE:** The accent wall has been wallpapered. A built-in desk is at the perfect height to look out the window. The small door gives access to extra storage space captured under the sloped ceiling. **BOTTOM LEFT:** A peninsula desk in the main floor office can be used on both sides. The wood ceiling inserts by Timeless Materials match the wood accents in the rest of the house.

the other rustic,” says Donna. “We were able to blend those two styles together harmoniously with small touches here and there.”

Having found just the right hue to capture the shimmering bay – Andes Summit by **Benjamin Moore** – that colour found its way to nearly every room in the house: as a ceiling colour here, an accent wall there, even the exterior.

Outside is further drawn in through the large rear-facing windows. Early in the design phase, Donna and Courtney reconfigured the exterior beams, bringing softer curves to the facade. That new curve is now reflected in the sweeping windows and doors of the living room, welcoming the striking views of The Golf Club at Lora Bay and beyond to the shimmering water.

“What stands out for me with this home is the strong timber framing and sheer amount of built-in cabinetry,” muses Ben. “It really was an all-round great project for us.” *Continued on page 50*

Finally. Achieve 100% Total Darkness.

Hunter Douglas Duetter® Honeycomb Shades with the LightLock™ System feature innovative, light-blocking channels that eliminate light gaps and ensure total darkness. Ask for details today.

519-370-0770
info@decordesign.ca
www.decordesign.ca
View our products at our Kiosk located at Leon's in Owen Sound.

©2018 Hunter Douglas. All rights reserved. All trademarks used herein are the property of Hunter Douglas or their respective owners. 180ULLMAGVIC1

- residential interior design -
- custom cabinet design -

blendedinteriors@gmail.com • 519 270 6799



SOUTHAMPTON LANDING

BUILDING LOTS AVAILABLE NOW

SOUTHAMPTONLANDING.CA
519-385-0845



A L A I R



In the lower level, Blended Interiors installed the huge Scrabble game the owners found at Restoration Hardware. The floor throughout is luxury vinyl plank with in-floor heating. **TOP RIGHT:** The stone wall by Campbell Masonry extends from the lower level to the second floor. The display niche is one of three along the stairway. Glass railings on the stairs highlight the wooden trends and allow sunlight to shine down the stairwell.



In the cosy media room on the lower level, a deep plush sectional is perfectly placed to watch a movie or hockey game. The reclaimed wood wall behind the television adds warmth and texture to the space.

Ben and his brother **Dylan Freeburn** joined Alair Homes in 2014, after many years of custom homebuilding. Becoming **Alair Homes Grey Bruce** was a game-changer for them, raising the bar for the client experience and giving them the freedom to focus on the details of management – design, costing and scheduling – with Alair's proprietary software.

The brothers' upcoming project, Southampton Landing, is the next step. The Seaton Group community will focus on active living and greenspace, preserving the ecology of the area as well as nodding to its renowned architectural style. "Southampton is known for its Cape Cod and craftsman-style homes, and these new custom-built homes will reflect that heritage," says Ben. **OH**

The Better Way To Build

BEAVER
HOMES & COTTAGES

Kitchen
Both
Flooring
Beaver Homes

WIARTON Design Centre

a division of the Wiarton Home Building Centre

160 Berford Street
Wiarton ON
519.534.5599
wiartonhhbc.com

McMILLEN ELECTRIC

Complete Home Inspections

Offering quality workmanship in Owen Sound & surrounding Grey & Bruce Counties

Whether it's a new construction project, renovations, or repairs, we are here to meet all of your residential and commercial electrical needs.

McMillen's also provides professional home inspection services to help customers make informed decisions when looking to buy or sell a home.

519.378.4909
McMILLENELECTRIC.CA

fresh COAT

START 2020 WITH A NEW LOOK FOR YOUR SPACE. HERE'S HOW TOP PAINT COMPANIES DESCRIBE COLOURS THEY'VE CHOSEN TO KICK OFF A NEW DECADE.

FARROW & BALL

BROCCOLI BROWN W108

From their new *Colour by Nature* palette. A quiet, dark stone colour that sits effortlessly alongside natural materials such as weathered wood or flagstone floors.



SICO

MYSTIC COBALT 6008-73

Inspired by the enchanting mix of mineral pigments known as cobalt blue. A deep blue verging on purple, this colour conveys timeless beauty. In fact, it was used to decorate the finest Mediterranean pottery thousands of years ago.



BEHR

BACK TO NATURE S340-4

A restorative and revitalizing green hue that engages the senses and pairs well with other colours both inside and outside your home.



SHERWIN-WILLIAMS

NAVAL SW 6244

"Naval is reminiscent of the night sky, which people have looked to for centuries for guidance, as a muse and as a reminder to live more mindfully," says Sue Wadden, director of colour marketing at Sherwin-Williams.

DULUX

CHINESE PORCELAIN
DLX1160-6

A stress-free anxiety-reducing hue that combines the energy and brightness of cobalt blue with a muted, dark navy tone. Get ready to coat your year in Chinese Porcelain's rich and traditional shade of serenity.



BENJAMIN MOORE

FIRST LIGHT 2102-70

A fresh palette. A revitalized spirit. A soft, rosy hue blooming with potential. The backdrop for a bright new decade.



BEAUTI-TONE

HONEY I'M HOME SC193-3

From the Simon Chang Trend Colour Collection. Warm and calming. Reminiscent of the hue of sweet honey, this soothing coat is like liquid amber for your walls. **oh**

double take

refined RUSTIC

RECREATE THIS LOOK IN YOUR OWN HOME.



PHOTO: JASON HARTOG | DESIGNER: ALISON HABERMIEHL



1. **MERCANA:** Feather I and II Canvas Prints 2. **HUDSON VALLEY LIGHTING GROUP:** Allendale Chandelier 3247 in Aged Old Bronze 3. **GRESHAM HOUSE:** Christopher Luxe Sofa 4. **JAIPUR LIVING:** Montparnasse & Revolve Pillows 5. **CENTURY FURNITURE:** Catalina 4 Door Credenza-Peninsula 6. **KRAVET:** Fabric in Windward - Regatta & Lyra - Sapphire 7. **RENWIL:** Bestin Side Tables 8. **STRUCTUBE:** Bigo Vase 9. **MERCANA:** Harmon II Jug 10. **ARTERIORS:** Valdez Floor Lamp 11. **GRESHAM HOUSE:** Hepburn Chair 12. **PHILLIPS COLLECTION:** Teak Puzzle Coffee Table 13. **JAIPUR LIVING:** Ceffine Rug in CFF02 OH

Fine Quality
Norwegian
Craftmanship



The **FYRE PLACE & PATIO SHOP** *Since 1973*
Located at Highway 6 & 21, Springmount (Near Owen Sound)
519.371.2963 | www.thefyreplace.com



Has your concrete, flooring, pool, or deck become *unsightly, old and damaged*?
Extreme Linings and Coatings can provide

the perfect solution



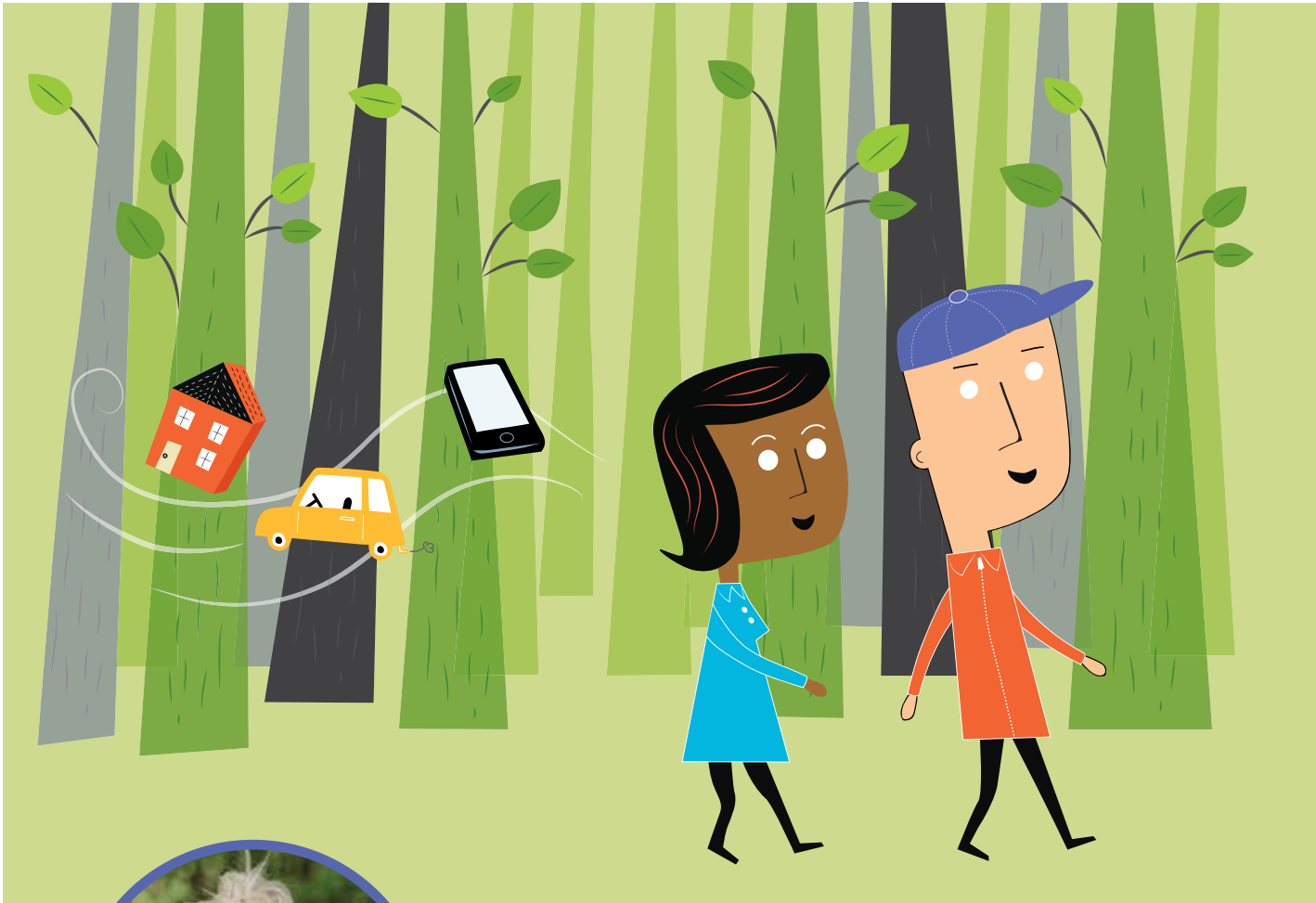
We specialize in concrete floor coatings, decorative concrete resurfacing, custom concrete diamond polishing and more. Whether it be your garage or shop floor, large agricultural or industrial equipment, we professionally apply the products to protect them all!

EXTREME
linings and coatings

Coatings • Linings • Resurfacing • Garage Flooring
Protective Polyurethane Coatings • Home or Office Flooring
Concrete Overlays • Agricultural Equipment Coatings
Decorative Concrete Resurfacing • Industrial Coating

519-375-6586 **extremelac.com**

Slow Living AT HOME



STORY **TAMARISK MCNALT-STEPHENS**
ILLUSTRATIONS **SHEILA BRITTON**

WE LIVE IN A FAST-PACED WORLD. DAY AFTER DAY, IT CAN BEGIN TO FEEL UNRELENTING, CHAOTIC AND SOMETIMES OVERWHELMING.

We yearn to find more balance – but that seems to be an elusive ideal in the Western world where busyness is still worn as a badge of honour.

So, how can you find a little more peace and calm in the ebb and flow of everyday life?

Enter the idea of slow living, a movement that is being adopted by more and more people around the globe.

On the definition of slow living, Australian author and podcaster Brooke McAlary writes “There’s no one right way – the only way is the one that works for you... living in accordance with the important things in your life.”

Our homes are a respite from the clamour of the world. Home is often the one place we can truly rest and restore and are free to be ourselves. Our homes offer the opportunity to create a space that reflects what we value.



Experiment with these ideas to bring the art of slow living into your home.

GET IN ALIGNMENT

As the saying goes, your values aren’t what you say they are, they are what you repeatedly do. Take some time to become aware. If how you spend your time, money and energy doesn’t align with your values, chart a different course. Take some time to evaluate your basic needs when it comes to your living space. For example, perhaps the big house is no longer relevant and downsizing would free up funds to pursue something you’ve always dreamed of.

EDIT YOUR SPACE

There’s a certain lightness that comes from living with less clutter (physical items but also obligations, projects, activities, etc.). The point of removing the excess is to make room for what matters most. As Leo Babauta, creator of the blog *Zen Habits*, says, “Be a curator of your life. Slowly cut things out until you’re left only with what you love, with what’s necessary, and with what makes you happy.”



AVOID TRENDS

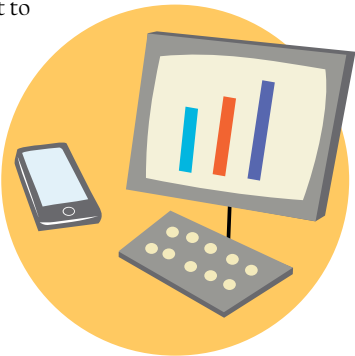
There’s a tendency in our culture to fall into the “want-buy-want-upgrade” mentality. Not only is it an unsustainable approach for the planet, but trends change every year and it’s impossible to stay on top. Take a slower approach to the design, furnishing and decorating of your home instead of rushing to have it all done at once. Allowing time when making decisions may even result in greater satisfaction and perhaps you don’t have to compromise on quality.

CREATE A RHYTHM

Integrating a daily rhythm, such as a morning routine and an evening routine, can help streamline the day, minimize stress and improve your mental health. It’s as easy as lighting a candle at mealtime – the glow of candlelight can shift the ambience and add calm. Once you’ve experimented with a daily rhythm that works for your family, adopt weekly, monthly and seasonal rhythms as well.

SET TECH BOUNDARIES

Disconnect to reconnect. It’s difficult to be in the moment when constantly tethered to a device. Although they have their place, it’s important to remember that our smartphones have been engineered to hold our attention. Try setting boundaries with technology, such as tech-free meal times, and reap the rewards of listening, relating and connecting with your partner or family – distraction-free.



MAKE YOUR HOME YOUR OWN

Design your home in a way that reflects and supports how you would like life to unfold. If cooking and entertaining are important to you, incorporate comfortable seating in the kitchen so family members and guests can chat with you while food is being prepared. Or if you want to reduce screen time, relocate the television so it’s not in the primary gathering area. Integrate whatever is important to your family into your home.

TRY SINGLE-TASKING

Be completely immersed in the task at hand, whether that’s preparing a meal or reading a bedtime story to your kids. It’s surprisingly difficult to do, but being more mindful in the moment can help us to appreciate what is right in front of us. If you have a hard time focusing, take five minutes and empty all of your to-dos on a piece of paper. Sometimes getting the thoughts out of your head and down on paper can help. **OH**



decorating

MAPS HAVE BEEN AROUND FOR AS LONG AS PEOPLE HAVE BEEN GOING PLACES – PERHAPS EVEN LONGER.

Etched on cave walls many thousands of years ago, the earliest maps charted the night sky. Babylonians carved terrestrial maps in clay. Centuries later, Greeks charted their world on paper while the Chinese rendered maps on wooden blocks and silk. As astronomy, mathematics and geography advanced, carefully prepared paper maps of the known world became essential to navigation, commerce and warfare. While cell phones and tablets make today's maps available at the touch of a finger, people still have a great affinity for old-fashioned maps.

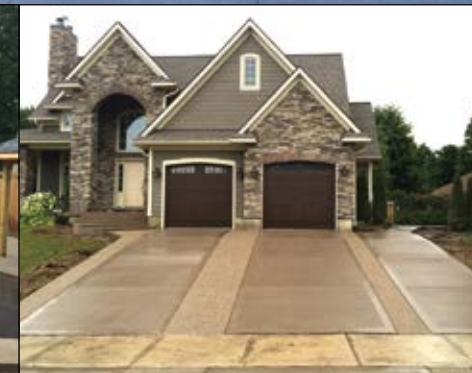
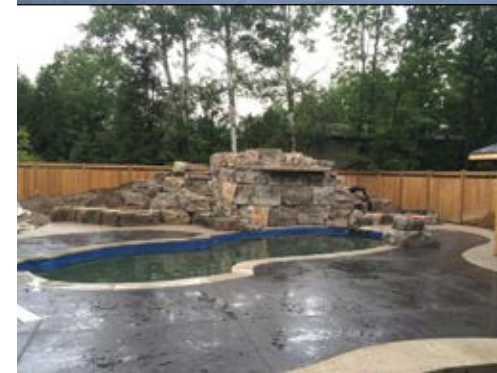
Designer Cindy Gibson uses antique maps to decorate homes, often in different ways. Creating a sense of place and belonging is an essential element in design, something that can be created with family photos and art, but also with maps, she says. "Maps can reflect a client's life journey, their history, present and future," explains Cindy, owner of C.E. Gibson And Associates Ltd. A historical map of a lake with the family cottage evokes memories for everyone who views it. The craftsmanship and beauty of historical maps makes them modern art.

Continued on page 60

STORY **WALTER FRANCZYK**

PHOTO: JASON HARTOG

all over the
MAP

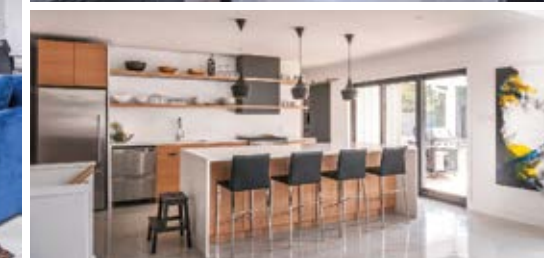
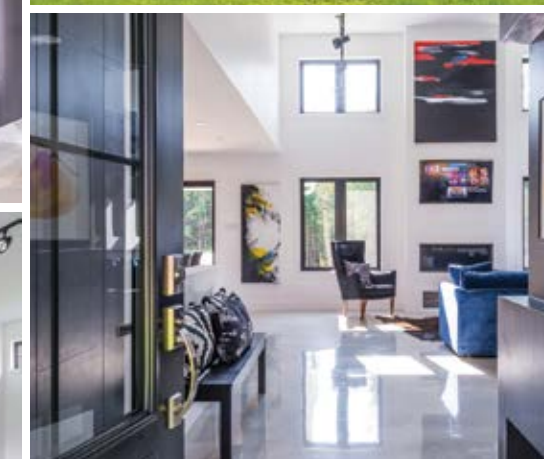


*Quality Custom
Designed Concrete*



Driveways • Patios • Walkways
Pool Decks • Floor Finishing
Broom Finish • Swirl Finish
Exposed Aggregate
Stamped Finish • Various Colours

519.895.6425
greatlakesconcrete.ca



Residential Construction • Project Management
Kitchen & Bathrooms • Additions & Garages
Siding, Soffit & Fascia • Renovations & More • Aging at Home

*All the expertise
you need,
under one roof.*

Over the many years, of building decks to building homes, we've acquired the knowledge and skills to tackle *any* home renovation. Big or small.

Planning to renovate? Feeling overwhelmed?
Aging and want to stay in your home?
Give us a call.
We'll be happy to sit down with you and discuss your options.

519.924.0025
valleyhomeimprovements.ca

decorating

PHOTO: BARRIE ROBINSON



Barrie Robinson has been collecting antique maps for about 30 years. It's a pastime he dialed back when he ran out of space. "After 10 years I had so many maps on the wall that my wife was beginning to complain," he says. Maps with original colourings look beautiful; they make an interesting conversation piece and are a novel way to trace family origins, Barrie explains. The intricate steps and skills involved in creating early maps is part of their appeal, he says. "People don't realize how much technology there was behind it in the 16th and 17th century and the stories that go behind their production," he says. "They're very high-tech, but they're also very pretty."

Antique maps are a better option for wall art than limited edition prints, painting reproductions or expensive original art, Barrie insists. Old maps appreciate in value, as well. One of his maps, a 1598 rendering of the Pacific that may have been used by the navigator on a galleon, has more than tripled in value to more than \$5,000. Antique maps of many different parts of the world and some European countries are very inexpensive, Barrie says. He estimates that beautiful maps from the 16th and 17th centuries can be bought for less than \$200.

Ken Rose, owner of Lake Effects, a gift store in Westport, the heart of eastern Ontario's cottage country, knows first-hand that people value maps. In every cottage he's visited, someone would open a cupboard to reveal a map or point to one tacked on a wall and show him their cottage location, fishing spots and islands. At a trade show in Atlanta 15 years ago, he found three-dimensional, laser-cut wooden maps that illustrate lake depths and roads. "When I saw them I knew they'd be perfect for our area because Westport has 30 lakes within

half an hour or so," he says. "I realized how special they were and how they can be personalized." Lake Effects has sold hundreds of laser-cut lake maps.

"Everybody loves their lake. Whatever lake they're on, it's probably the best lake in the whole world," Ken says. "It's people's happy place, so when they can have something indicative of the place, it is aesthetically pleasing."

For those who want to go big, Murals Wallpaper offers world map wallpaper that can cover an entire wall. It comes in panels that are installed like wallpaper. There are also multiple style and colour options to choose from.

Steve Predko of Trailhead Designs is a new mapmaker who appreciates the art of early cartographers. "Original maps were as much

paintings as they were technical," he says. He started making maps with a vintage look, then began using wood and a laser cutter. "Once I created a couple, I became aware of how many other people are equally interested in maps for the places that are important for them," he says. "There are thousands of lakes and cities out there – and each one is special for someone." Maps help people stay connected to a place they love, he says. His maps are usually displayed as part of a grouping of items on a wall to help set a theme. "They are natural wood so they bring warmth to a wall," Steve says.

Cindy expects to use new and historical maps in home décor often. "It provides a perspective for your children, that the world is bigger than what is around us, and the possibilities to dream and even explore are virtually endless." **OH**



PHOTO: SANDY MACKAY



PHOTO: TRAILHEAD DESIGNS

Cedar Outdoor Saunas

So many health benefits!

Available in a variety of shapes and sizes. Delivered & assembled on site.



Maxwell
GARDEN CENTER

453897 Grey Rd.2, R.R.#1 Maxwell, ON
519.922.1479 | 844.564.0224

Visit our online store for more details and pricing.
maxwellgardencenter.com



Rahn Bros.
CONTRACTING

Specializing in residential & commercial renovations.

additions • kitchens • bathrooms • basements • sheds
outdoor living spaces • product sourcing • space planning

Let us manage your project from start to finish and bring your vision to life.

519.379.1623 boomer@rahnbro.com
www.rahnbro.com

It's time for solar.



Take control of your electricity bill.

Solar will insulate you from electricity rate increases for 30-40 years! And yes, the less power you buy, the lower your delivery fees are.

Contact Blackline Power to evaluate your solar options. We are the local experts and have installed hundreds of solar systems since 2010. Invest in the sun and reduce your carbon footprint at your home, cottage, farm or business!

ROOF & GROUND GRID-CONNECTED SYSTEMS
RESIDENTIAL & COMMERCIAL & AGRICULTURAL
HIGHLY TRAINED & SOLAR CERTIFIED & INSURED

Blackline Power
RENEWABLE ENERGY SPECIALISTS
519.371.8945
www.blacklinepower.com

NABCEP
CERTIFIED
PV Installation Professional
CanSIA
CANADIAN SOLAR INDUSTRY ASSOCIATION
L'ASSOCIATION DES INDUSTRIES SOLAIRES DU CANADA



THE LEGACY: It all started 55 years ago when Andy Van Dolder opened an aluminum siding business in Annan. Andy built a solid foundation through hard work and exemplary customer service to expand and grow the business into what is now **Van Dolder's Custom Exteriors Home Team**, with locations in Owen Sound and Collingwood. Andy's two sons, Kris and Tim, worked with their father for many years and learned the business from the ground up. Today, they are inspired and excited to be the next generation leading the business into the next decade. They look forward to helping customers discover the advantages of having the Home Team take care of all their home's exterior improvements.

THE LAYOUT: The Owen Sound location is massive and offers an indoor village-style setting to display doors, windows, siding, soffit, fascia, garage doors, sunrooms, decks and window coverings. Each building within the village showcases different combinations and colours of their extensive home improvement products. These interactive displays allow customers to open and close doors and windows, feel their weight and experience how they operate. Hardware can be felt and tested to see what style fits each project. Installed siding on the village buildings allows clients to see, touch and compare different styles and materials. Self-

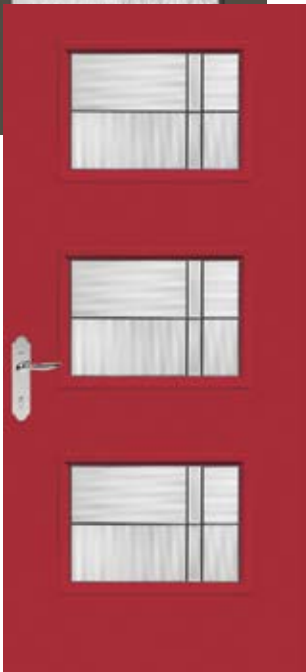
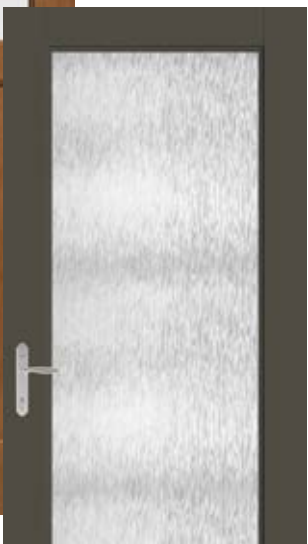


PHOTO: BONNIE FOX

Brothers Kris and Tim Van Dolder

GET THERE:

1624 28th Ave. E.,
Owen Sound
519.376.1624
vandolders.com



standing displays of door and window hardware and aluminum storm doors make it easy to select the right product for every home.

SUPPLIERS: Van Dolder's Custom Exteriors chooses products that deliver the best value and price for their clients, combining time-tested materials with the latest home improvement materials. Trusted manufacturers include: Maibec, Ostaco, Gentek, MasterGrain, Lepage Millwork, OLS Canada, Sunroom Solutions, Windspec, Hunter Douglas, Azek, Centor, Craft-Bilt Materials Ltd., Trimlite and Sunroom by Four Seasons.

THE TEAM: Experienced and knowledgeable Home Team members are available to assist you with information and design ideas. No job is too big or too small. If your front door needs replacing, you're adding an awning to your deck or looking for a complete window and door package for a new home, the Home Team experts will guide you through all the options available and can book professional installation.

MOTTO: "If it goes on the outside of your home, you'll find it on the inside of ours." **OH**

the bonds
THAT BUILD



PHOTO: SANDY MACKAY





CONDOMINIUM RESIDENCES

PROJECT BY HILL BUILD

*Impress Yourself...
you deserve it!*



COMING TO
PORT ELGIN, ONTARIO
2020

CONDOS STARTING AT
\$379,000.00

Ownership or leasing:
Inquire now for best units!

Only a few remaining
apartments available for sale.

Residential Renovations Specialist

For an out of the ordinary renovation
experience call Hill Build.

Hill

www.HillBuild.com (519) 832.3330

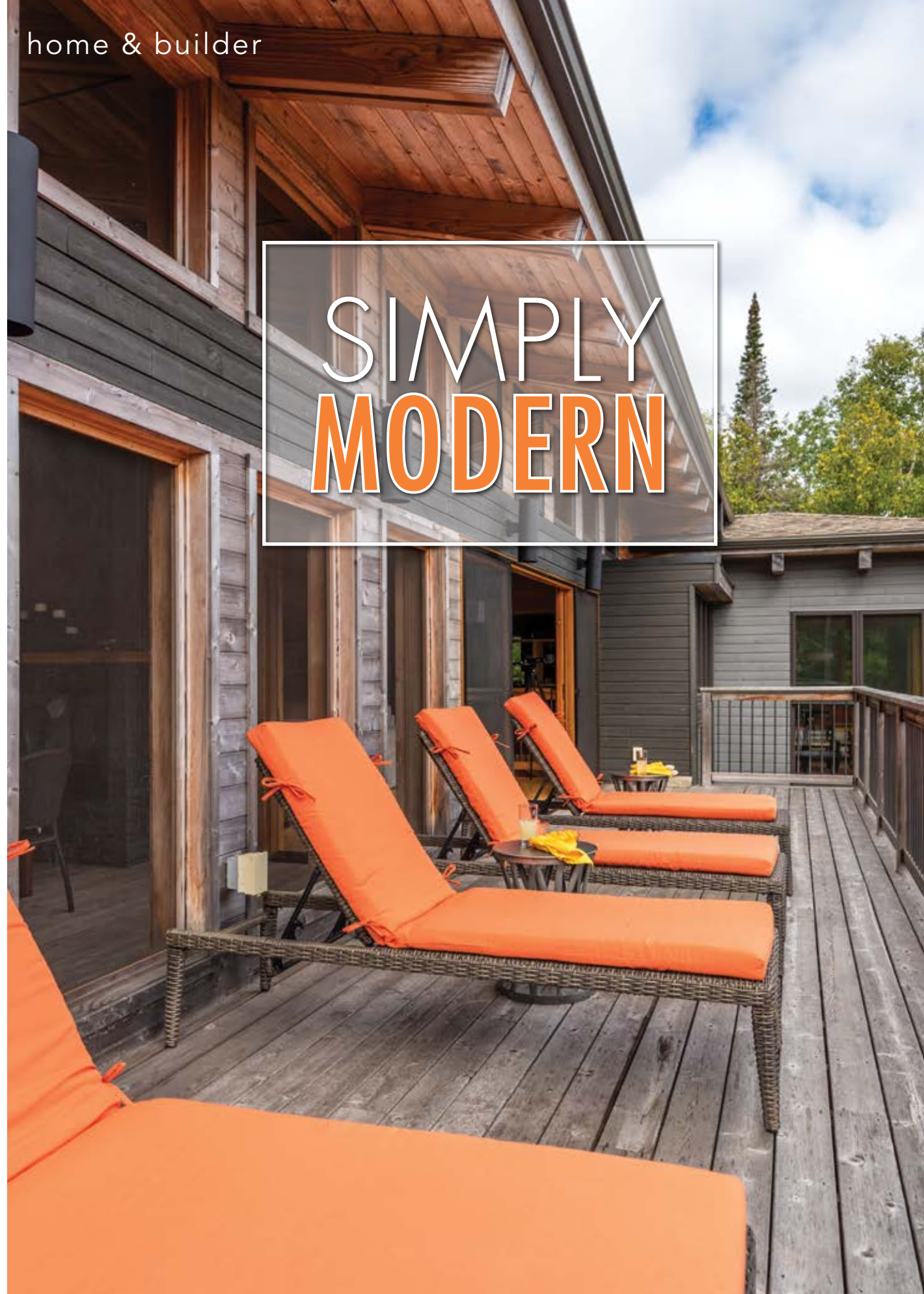


CALL NOW FOR DETAILS!

sales@powerlinkoffice.com
powerlinkoffice.com

POWER LINK 519-241-8833

SIMPLY MODERN



STORY **AMANDA MOORE**
PHOTOGRAPHY **SANDY MACKAY**

Modern and modest is what the owners of a seasonal home north of Lion's Head wanted, and every part of their escarpment-wedged home delivers on this key element. *Continued on page 68*

ABOVE: Amanda and Jose Andino Rodriguez of And-Rod Construction Ltd., with their dog Maggie, stand on the upper deck that wraps around this Frank Lloyd Wright-inspired retreat. **TOP RIGHT:** On the lower deck, the cantilevered dining room offers shelter from the elements. **RIGHT:** The rear of the home has many outdoor areas to enjoy the sights and sounds of Georgian Bay. Windows were sourced at Marvin Windows. **OPPOSITE:** Orange cushions on the chaise lounges add a pop of colour on the upper deck. The decks are a combination of cedar and Douglas fir from Miller Lake RONA.



RIGHT: Cherry shaker cabinets offer ample storage in the kitchen. The counters are soapstone with the main sink offering a view of the natural landscape through a large window. **BELOW:** A second sink in the island is placed closer to the cantilevered dining room. Plumbing by Vic Hepburn Plumbing & Diving. Nelson pendant lamps hang over the dining table. **OPPOSITE:** The self-supporting post-and-beam ceiling is highlighted in the living room and the screened-in room, made possible by the glass in the upper section of the wall that divides the two rooms.



At just over 2,000 square feet, this two-storey, five-bedroom home has sleeping space for 10 and ample room for guests to roam about the usually packed summer retreat. The owners make use of every square inch of the home, which is contemporary in appearance yet still blends in with the more traditional homes in the neighbourhood.

“It’s a modern and simple family cottage,” says **Jose Andino Rodriguez**, owner of **And-Rod Construction Ltd.** in Tobermory, whose company built this Frank Lloyd Wright-style escape on the edge of the Niagara Escarpment. “It’s not overly complicated or fancy on the inside. It’s modest, but it’s the design that really sets it apart.”

The design by Altius Architecture pulls from Wright’s classic style of low-pitched roofs, cantilevered rooms and central fireplaces but with some cosy cottage features, which include Douglas fir timber framing and wood floors. *Continued on page 71*



**“IT’S A MODERN
AND SIMPLE FAMILY
COTTAGE.”**
– *Jose Andino Rodriguez*

“WE LOVE BEING ABLE TO HEAR AND SEE THE OUTDOORS WHILE BEING SHELTERED FROM BUGS AND RAIN.”
– Homeowners

Beneath the hip roof, which helps the home fit in with the more traditional community, is a self-supported post-and-beam ceiling that gives the structure the cottage feel the homeowners wanted. Timber planks and beams and glistening maple hardwood floors carry throughout the open-concept main floor of the home, which is separated into sections.

On one side of the double-sided fireplace is a screened-in room with views of the water. On the other side is a simple living room with comfortable furnishings. A bank of sliding doors opens up from the living area to a beautiful red cedar and Douglas fir deck (**Miller Lake RONA**) that wraps from one side of the home to the other. *Continued on page 72*

RIGHT: A telescope is ready to view the star-filled night sky through the sliding patio doors. **BELOW:** Hunter Haulage worked with the natural lay of the site and kept the hardscaping as natural as possible. Native plants and wildflowers were sourced at Peninsula Out of Doors. **BOTTOM RIGHT:** Georgian Bay's rocky and rugged shoreline is steps from the home. **OPPOSITE:** The screened-in porch has room for dining, relaxing, naps and yoga. A double-sided fireplace offers ambience and heat on cooler nights.



RIGHT: Slate tiles add a natural element in the lower-level family room. The tile extends to the hallway that runs the length of this lower level. There is access to the deck and a second entrance leads to the driveway side of the home. **BELOW:** Maple stairs built by And-Rod Construction Ltd. lead to the lower level. The wall of windows offers a view of the property.



In the kitchen, floor-to-ceiling cupboards take up one wall, creating plenty of storage for more than just food and kitchenware. A massive island runs the length of the room with storage on both sides under the gleaming stone countertops. The owners chose IKEA cabinets for their simplistic design, functionality and ample options, and opted for stainless steel appliances to complete the modern look.

The kitchen opens up to a small dining area that feels much larger due to the natural light spilling in from all sides. The dining room view is extended through another key architectural element of Lloyd-Wright's style – a cantilever. The room protrudes from the exterior of the home, adding a cool design element and providing shelter for part of the lower deck.

"It's a really small, intimate space and you get a really nice view," says Jose.

Like many, the owners of the home were drawn to the area by its tall forests and rocky shores. After vacationing for more than two decades on the Bruce Peninsula they decided to take the plunge and build a home away from home. *Continued on page 74*



Professional Building Solutions



Whether it's renovations, additions, custom homes and cottages, outdoor living spaces, eco minded building projects or modern design, AND-ROD Construction can evolve your ideas into the property of your dreams.

Tobermory, Ontario
519-596-1224
anchor@and-rodcontracting.com
and-rodcontracting.com



“We wanted an inviting home where our family and friends could gather with us to enjoy the natural beauty of the area in comfort,” the homeowners say. “We love cooking and eating, and our focus was on the common spaces like the open kitchen, where we sometimes have six or eight people happily preparing a meal together. We started by imagining a more traditional cottage, and with our architects, moved toward a modern, clean design featuring natural materials complemented by bold colours.”

Those bold colours bring the sleeping areas

to life. Vibrant greens and turquoise carry through the lower level of the home. Bright yellow defines the common living space. A simple design allows the shared bathroom, which features two separate showers, to be sectioned off, allowing for more privacy. The stone shower features a mix of slate, riverstone, glass and multi-jet showerheads – a favourite feature of the homeowners’ grown children.

Black slate tile throughout the lower level continues the modest and modern theme of the home. *Continued on page 76*



ABOVE LEFT: Windows frame the trees and escarpment rock in the master bedroom. Colourful vintage area rugs are layered on the maple hardwood floors. **TOP:** Bright yellow paint in the lower level hallway reflects light. The exterior door in the sitting room creates a view at the far end of the hall. **ABOVE:** A glimpse into the huge shower, finished with a combination of riverstone, slate and glass tile, with multiple showerheads.



Warm up your décor.

**BUDGET®
BLINDS**

Style and service for every budget.®

We bring custom window coverings to you!

shutters | draperies | wood blinds | cellular shades
woven woods | roman shades | window film...and more

Expert fit!

Measuring & Installation Free In-Home Consultation
519-793-3921 www.budgetblinds.com

**KITCHEN & BATH DESIGN
CONTRACTOR SERVICES
QUOTING SERVICES
LOCAL CEDAR
WINDOWS & DOORS
TOOL RENTAL
FLOORING
PAINT
ELECTRICAL
PLUMBING
LUMBER
ROOFING
HARDWARE**

**MILLER LAKE
RONA**

We Deliver!

Ask about installation!

Over 40 years in business!

4707 Hwy. #6 Miller Lake **519-795-7729**
Shop online! **WWW.RONA.CA**

Spring!

**Peninsula
Out Of Doors**

Garden Centre & Complete Landscaping Services
14 Budvet Rd, Lions Head | 519.793.3979 | penoutofdoors.com

“THERE’S SOME
REALLY UNIQUE
AND INTERESTING
DESIGNS.”
– Jose Andino Rodriguez

RIGHT: Each of the lower level bedrooms has cork flooring and a different paint colour on the walls. The window bench runs the width of the room and is wide enough to double as an extra bed. **BELOW:** Colourful toss cushions and vintage rugs add a unique style to each of the bedrooms.



Sotheby's
INTERNATIONAL REALTY
Canada

For those who seek an exceptional life

“There’s some really unique and interesting designs in the basement,” says Jose. “There really isn’t much space that is not being used.”

The lower level is accessed via a custom built staircase made of maple and Douglas fir. A custom, double-sided bookshelf separates the stairwell from the main foyer.

The screened-in room is the owners’ favourite spot to enjoy the beauty of the surrounding environment. It is where they spend their summer days, rain or shine.

“We eat our meals out there as often as we can, do our yoga overlooking the water, read and talk and even sleep there on the futon,” they say, noting a screened-in room was at the top of their wish list. “We love being able to hear and see the outdoors while being sheltered from bugs and rain.”

Landscaping around the home is simple, with native species and natural elements. The front yard is seeded with wildflowers to blend the property with the natural surroundings. **Hunter Haulage** created a relaxing patio space with natural stone and native plants. The plants were purchased at **Peninsula Out of Doors**.

Living quite a distance from the site during the building phase, the homeowners were at ease with And-Rod Contracting overseeing the build on their behalf. They came to appreciate the care exercised by the team to bring their modest dreams to life. **OH**



Serenity on The Shore | Lions Head, ON Exclusive luxury retreat offering breathtaking views of the bay! Framed privately amongst the trees, listen to the waves while entertaining or relaxing on the roof top patios accented with spiral stair casing. Follow cascading steps to the shores edge with private deck. Exceptional opportunities to stargaze, observe the butterflies amongst stunning milk thistle gardens, walk the trails and explore many amenities near by. With stunning interior features, this Eco conscious home has generator, electric vehicle charging and many other efficient upgrades. **Offered exclusively.**



Apblett Group

Julia Apblett* , Nicole Walton*
& Scott Moynihan*
apblettgroup@sothebysrealty.ca
juliaapblett.com

Direct 705.888.2877

E.&O.E: This information is from sources which we deem reliable, but must be verified by prospective purchasers and may be subject to change or withdrawal. Sotheby's International Realty Canada, Brokerage. Independently owned and operated. *Sales Representative.

Also Available



Collingwood,
ON

Desirable “The Forest”
0.85 acre \$1,165,000



The Blue
Mountains, ON

Prestigious Georgian
Bay Club \$2,395,000

AVOIDING RENOVATION NIGHTMARES

Get it in writing. That's the bottom line from the Canadian Home Builders' Association (CHBA) when it comes to home renovations.

STORY **WALTER FRANCZYK**
ILLUSTRATION **SHEILA BRITTON**



RENOVATING A HOME CAN BE AN EXCITING AND rewarding experience. New finishes and fixtures, more living space and modern amenities all help make a home more functional, comfortable and appealing. For too many people, however, renovations can be disastrous. Shady contractors can leave homeowners with their money gone and little work done. Incompetent builders can create problems that are more costly to solve than the original renovation. Year after year, horror stories chronicle these situations.

Contractor Mike Holmes made a television career out of exposing sub-standard building practices and fixing them. He urges homeowners not to rush into a renovation by hiring the first available contractor. When interviewing builders, Holmes suggests getting at least five references and checking them out. Look at jobs done by the contractor five or more years ago to gauge how the work stands up, he advises.

Diligent homework can prevent renovation nightmares if homeowners investigate the credibility, work history and track record of any contractor they're considering hiring.

A detailed written contract between the homeowner and builder – one that spells out the scope of work, timelines and payment schedules – is essential, according to the CHBA. "Even the smallest job should be documented in writing," the CHBA states in its homeowners' guide to renovation contractors. If a contractor suggests that you go ahead without a written contract, or won't put anything on paper, don't do it, the CHBA warns. "The risks are simply too high."

While a one-page contract may be enough for a small project, larger jobs typically need additional documents, such as plans and drawings that are part of the contract. Specifications should be detailed with brand names, dimensions, models and product numbers where appropriate. Work should be thoroughly described, so both the homeowner and contractor have a clear understanding of what the work entails.

A work description should include preparatory tasks, such as removing old shingles or tearing down walls, as well as waste disposal and items to be salvaged. It should also describe structural details, such as framing, sheathing and subfloors, insulation, plumbing and electrical services. Window and door sizes and locations should be

specified as well as finishes and the number of coats of paint. For a major renovation, the scope of work could include 20 pages of material specifications.

"Get everything you've discussed in writing," says Brendan Charters, a partner in Eurodale Developments Inc., a custom homebuilder that won a CHBA renovation award. "If you're happy with the preliminary design, budget and timetable, it's important to commit to final drawings and sign a detailed contract," Brendan says in a video produced by RenoMark, a professional renovators' group. The contract should include project plans, price, a payment schedule and work timelines. It should clearly spell out how changes will be handled, he advises. Communication, addressing priorities from the beginning, and regularly scheduled meetings with the contractor will help the project run smoothly, he says.

He urges homeowners to hire a professional renovator who can explain what's required and obtain permits, as well as source other experts such as architects, engineers and tradespeople.

RenoMark renovators are contractors and members of their local homebuilders' association who have agreed to abide by a code of conduct. The code requires them to provide a detailed written contract, including a scope of work, for all projects. They must offer a two-year warranty on work and carry at least \$2 million in liability insurance. As RenoMark renovators, they pledge to return homeowners' calls within two business days. Some local builders' associations require a one-day call back. RenoMark renovators are also required to have all applicable licences and permits and to work only with subcontractors who have workplace safety and employer's liability coverage. (Liability insurance can protect the homeowner's family and property as well as neighbours or anyone who might come onto the property.)

A 2018 Ipsos online survey reported that 78 per cent of respondents in Toronto found it difficult to find a trustworthy renovation company. More than one in five respondents indicated they needed renovation work redone due to slipshod construction.

The survey supports the importance of hiring a professional contractor and securing a written contract before any work begins. **OH**



AMAZING CUSTOM BUILT SNYDER HOME 128 Trillium Dr., Port Elgin **\$1,349,900**

4 Bedroom/3 Bath Raised Bungalow, Lake Huron Minutes Away, 4,000 sq.ft., Triple Car Garage, In floor Heat, Granite, Mstr w/5pc Ensuite, Large Covered Deck Overlooking Green Space, Too Many Upgrades to List, Ask for the List Today. MLS®238094



PRIME WATER VIEW HOME 40 Miramichi Bay Rd., Saugeen Shores **\$1,149,000**

Lake Huron Sunsets Outside your Door
3 Bedroom/3 Bath Raised Bungalow
Located on the Shore Between Southampton & Port Elgin
New High Efficiency Gas Furnace, Metal Roof, Maintenance Free Decking. MLS®240938

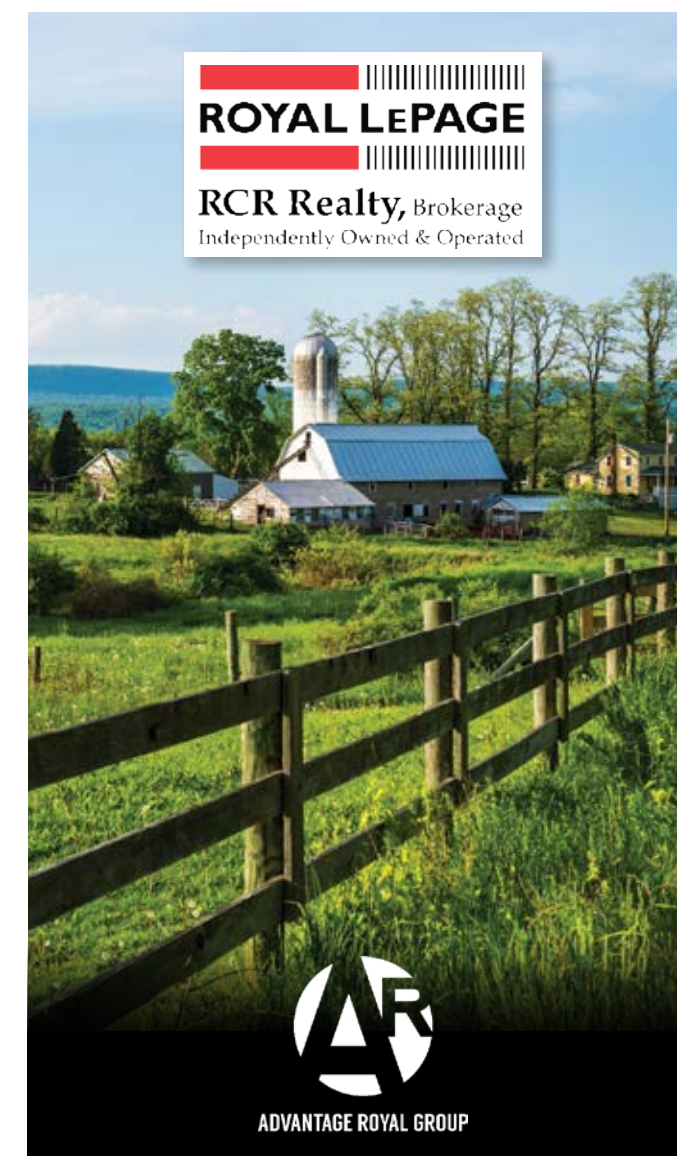
Brian Shular

Broker of Record/Owner
519-389-0938
brianshular@bmts.com



Sutton-Huron Shores
Realty Inc., Brokerage
606 Goderich St., P.O. Box 880
Port Elgin, ON
519-797-1007

www.suttonhuronshores.com



ROYAL LePAGE
RCR Realty, Brokerage
Independently Owned & Operated



ADVANTAGE ROYAL GROUP

RURAL • FARM • WATERFRONT

*Scott can assist you with all your
real estate needs across Grey & Bruce Counties.*

Scott Crowther

Sales Representative
Team Lead, Advantage Royal Group

519-379-7192

ScottCrowther.com

scott@advantageroyalgroup.com
900 10th St. West, Owen Sound



ROYAL LePAGE
**CHAIRMAN'S
CLUB**
2019
NATIONAL
TOP 1%

cooking at home

Grilled PEACH AND BURRATA SALAD

RECIPE AND PHOTOGRAPHY
JENELLE MCCULLOCH

BURRATA IS A MELLOW-TASTING CHEESE WITH A HARD EXTERIOR AND A SOFT, CREAMY INTERIOR. WE PAIR IT WITH THE BRIGHT FLAVOURS OF ROASTED PEACH AND MINT TO CELEBRATE THE SEASON.



SALAD INGREDIENTS

2 large peaches

arugula

mint leaves

prosciutto

burrata cheese

pesto for garnish

VINAIGRETTE INGREDIENTS

3 Tbsp olive oil

1 Tbsp vinegar (apple cider or sherry)

salt and pepper to taste

DIRECTIONS

Slice peaches in half and remove pits.

Preheat a grill pan or grill and rub with vegetable oil to prevent peaches from sticking.

Grill peaches for 5-7 minutes on each side or until charred.

Meanwhile, combine all vinaigrette ingredients.

In a large bowl, combine arugula and a small amount of separated mint leaves.

Drizzle with vinaigrette and toss to coat.

Place on a serving plate.

Top with grilled peaches and prosciutto.

Spoon burrata onto salad and garnish with pesto.

Season with fresh cracked pepper. **OH**

online

Get more recipes at ourhomes.ca/blogrecipes

IT'S FINALLY HERE!

Subscribe to our
Newsletter



- ✓ Gorgeous Homes
- ✓ Exclusive Giveaways
- ✓ Behind-the-Scenes Access

Delivered straight to your inbox



Sign up today

ourhomes.ca/newsletter

ourhomes
CELEBRATING LIFE AT HOME

Industry professionals WORKING TOGETHER

MEET THE BOARD OF DIRECTORS OF THE GREY BRUCE HOME BUILDERS & TRADES ASSOCIATION.

PHOTOGRAPHY SARAH TACOMA



BRYDEN HAMILTON

PRESIDENT

Owner, Blackland Construction Ltd.

The Grey Bruce Home Builders & Trades Association connects, educates, contributes and advocates on behalf of the residential construction industry in our communities. Through meetings, we ensure our members learn about the best practices from experts in safety, law and building sciences. We organize special events to raise money for local community projects and bursaries. Our members work with educators and all levels of government to shape policies and ensure the long-term strength of our local construction industry. I joined because promoting professionalism and service work is important to me.

I also own Blackland Construction, a builder and renovator serving Bruce and Grey counties that specializes in personalized projects and great customer service. I joined GBHBTA to learn the best practices from experts in our field. The benefits of membership are a resilient industry and community.



AT HOME

Spring Chore: Raking.

Fun Saturday Night:

Making homemade pasta with my daughters.

Favourite Word: Hi.

BUCKET LIST: Hiking the entire Bruce Trail.

Continued on page 84

BUCKET LIST: Building my dream home.

AT HOME

First Spring Chore:

Gardening. **Fun Saturday**

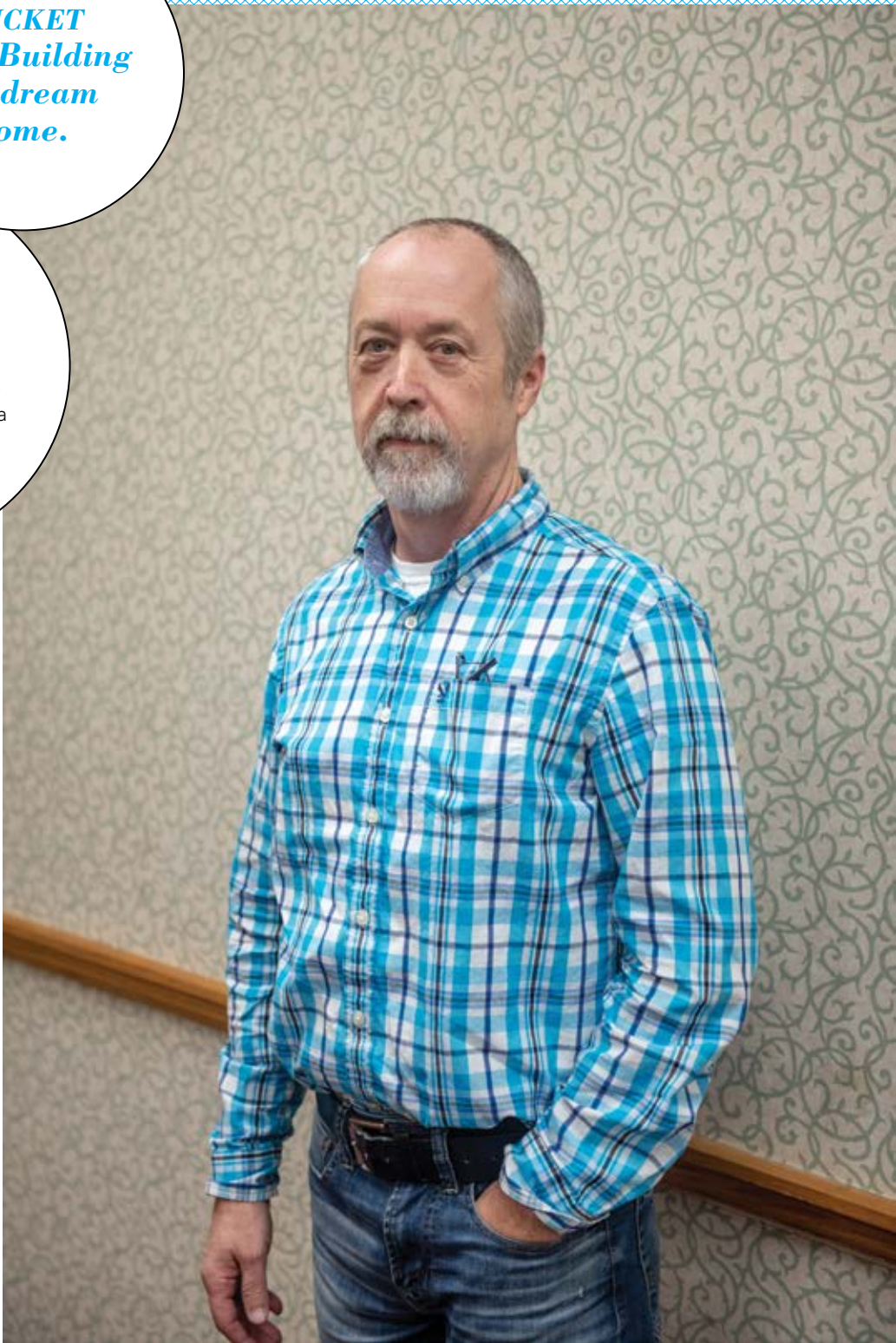
Night: Relaxing in the hot tub. **Favourite Word:** Krista (my wife).

GIL ARMES
TREASURER

Owner, Grey Bruce
Paint & Decor

Grey Bruce Paint & Decor features Benjamin Moore paints and stains. Colour consultants are always in the store to provide expert colour and product advice.

I believe in assisting the building community that supports us. Being a member of the GBHBT is a great way to connect with current and future clients.



OUR inspiration becomes YOUR reality

Home Tours, Style Ideas, Recipes & DIYs

Follow OUR HOMES on Pinterest, Facebook and Instagram for the latest updates.

RECENT TOP PIN
Home Tour / Guelph

RECENT TOP POST
Home Tour / Collingwood

RECENT TOP POST
Home Tour / Blue Mountains

celebrating life at home
ourhomes.ca

BUCKET LIST: An Alaskan Cruise.



DAN BURROWS
DIRECTOR

Owner, Ken Burrows and Son Inc.

Ken Burrows and Son Inc. has operated as a family-owned business for 50 years. We take pride in building custom homes and offering all services within the construction industry. I originally joined GBHBTa to carry on the legacy of my grandfather who was president in 1978. I remain a member and Director so I can be actively involved within the industry and volunteer with the community. It has also provided awareness of the newest industry standards and has given me the opportunity to improve my public speaking.

AT HOME
Spring Project: Constructing a motocross track for my son. **Favourite Word:** Imagine. **Fun Saturday Night Plans:** Entertaining friends and family.

Continued on page 88

OLD WAY

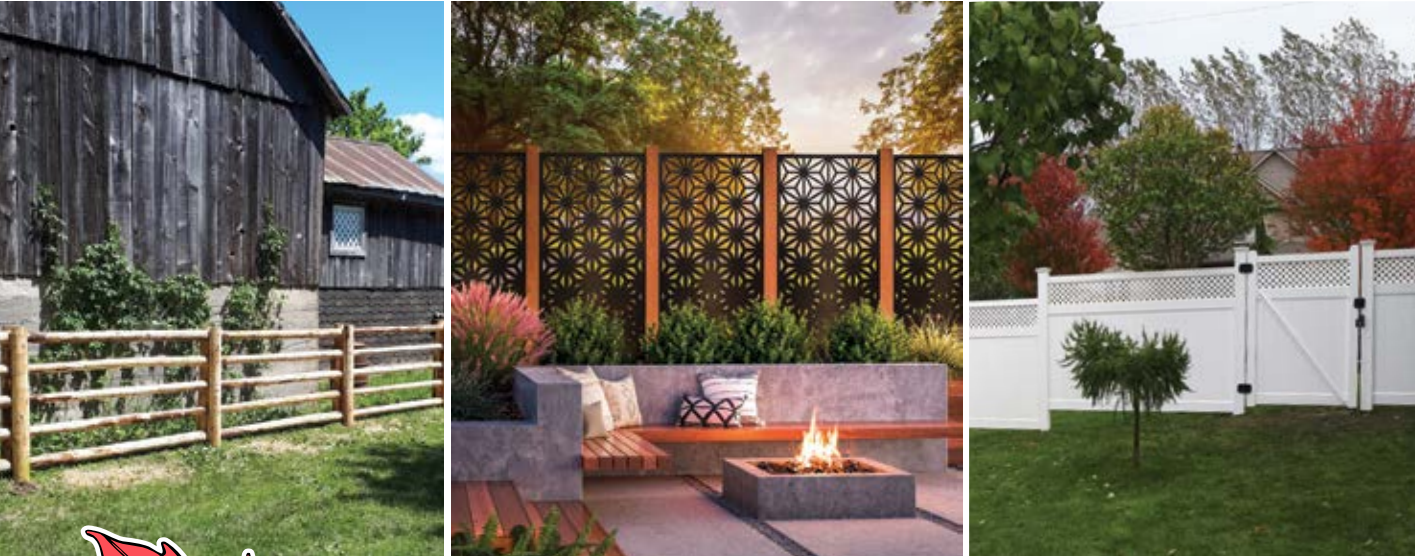
BETTER WAY

519-924-0050

STARTING OFF
ON A **SOLID FOUNDATION**
SINCE 1995

POSTECHPILES.COM

RESIDENTIAL - COMMERCIAL - AGRICULTURE - **FREE ESTIMATES & PLANNING**



Built Wright
FENCING
Chesley

"Changing the look of your property."

Ball Diamonds • Tennis Courts • Swimming Pools • Vinyl Farm Fence • Chain Link • Wrought Iron • Wood Privacy

519.387.5022
builtwrightfencing.ca

Follow us on Facebook for more details.



BUCKET LIST: Good health and happiness for all my friends and family.

AT HOME
First Outdoor Chore: Cleaning up what winter has left behind. **Favourite Word:** Really. **Saturday Night Fun:** Bonfire and good friends.

DOUG SOWERBY
DIRECTOR

Owner, SDBI Complete Property Maintenance

SDBI Complete Property Maintenance does grass cutting and yard work in the summer, snow blowing and sidewalk shovelling in the winter and almost anything else you can think of. Being a member of the GBHBTA was a natural fit for my business. I meet many builders who build homes that need property maintenance, a service I am happy to provide. I am a Director as well as being a member and it is the best way to continually stay on top of industry news and updates as well as supporting my livelihood. Membership makes a difference.

Continued on page 90

Home comfort you can depend on.

You can count on Heil® heating and cooling systems for quiet, energy-efficient and reliable performance, backed by outstanding warranties.

Sandy HAMILTON
PLUMBING & HEATING INC.

HEIL
HEATING & COOLING PRODUCTS
Depend On Us.

NORTHERN
HEATING & VENTILATION

AIR STAR
MECHANICAL

PLUMBING, HEATING, A/C, GEOTHERMAL & WATER TREATMENT
Collingwood • Markdale • Owen Sound • Durham
519-371-5815 • 519-986-3307 • 800-661-5796 • 519-369-1011
northern@sandyhamilton.ca

BLACKLAND
CONSTRUCTION LTD.

Specializing in personalized projects & great customer service

Homes, renovations & custom construction in Grey & Bruce Counties.

519.220.5723
info@blacklandconstructionltd.com

GREY BRUCE
HOME BUILDERS & TRADES ASSOCIATION

explore

MULCH-IT
specialized land management //
land clearing //+ trail creation

mulch-it.ca
519 376 0002
proudly serving Southwestern Ontario since 2007

**BUCKET
LIST: Travel,
travel, travel.**

**DONNA-LEA
TOMLIN**
EXECUTIVE OFFICER
Supervisor, Lockwood Painting

Lockwood Painting is a full-service painting and decorating company. Much of our work involves painting new custom homes within Grey and Bruce counties.

I have always been interested in building and joining GBHBTA is my way to give back to the community I work in. As Executive Officer, I liaise between the provincial OHBA, the federal CHBA and our local association. I also help organize and develop policies within our association, creating stronger bonds with local builders and stronger ties within the community.

AT HOME

Spring Chores: Gardening and cleaning up winter's mess. **Favourite Word:** I am not allowed to write it! **Fun Saturday Night:** Friends, bonfire and a few drinks.



Hot Tubs
FROM \$**2,999**⁹⁹
The Water Store
OWEN SOUND • 519-371-8500
thewaterstoreowensound.com



Reliable service since 2008

**Interior & Exterior
Residential & Commercial
Grey Bruce & Simcoe Counties**

Top quality paints, primers & stains
On-site airless spraying • Wallpaper removal & hanging
Drywall repair • Staircase and trim finishing

**LOCKWOOD
PAINTING**
519-372-3008
www.lockwoodpainting.ca



Best of the
BEST
READERS
CHOICE
AWARDS
19
PLATINUM



 **HOME &
COTTAGE
EXPO**

BAYSHORE COMMUNITY CENTRE
Saturday, April 25th & Sunday, April 26th 2020
10:00 AM – 4:00 PM

 **Buchner Manufacturing Inc.**
The Perfect Balance of Price and Quality.
Siding • Eavestroughing • Roofing

Meet contractors, interior designers, landscapers, home improvement specialists, outdoor recreation, consumer electronics suppliers, and much more - all in one convenient location.
Visit www.OwenSound.ca/HomeandCottageExpo for more details.



BUCKET LIST: Visit the eight wonders of the world.

TARA HALL
SECRETARY

Office Manager, Peninsula Overhead Doors Inc.

Peninsula Overhead Doors is family owned and operated. We supply overhead doors for residential and commercial applications across Grey and Bruce counties and have been in business since 1991.

Being part of GBHBTA allows me to give back to an industry that helps define who I am. Being a member shows that companies involved in the organization want nothing but the best for our industry. I also think it shows legitimacy and professionalism.

AT HOME
First Outdoor Chore: Bring out the patio furniture! **Favourite Word:** I probably shouldn't answer this! **Fun Saturday Night:** Pulling a few harmless pranks with a few good friends.

Continued on page 94

Great Lakes Custom Homes & Renovations



We build excitement!
Your Premier Custom Home Builder in Grey Bruce
Robert Abbott, Owner
186 Lakeshore Rd. E., Blue Mountains | 705.446.4831 | greatlakescustomhomes.ca



Dulux Paints Discover The Dulux® Difference

Superior Quality, Unbeatable Value

The Dulux brand has always been an industry leader for not only the DIY homeowner but the professional as well, with new innovative technology and environmentally friendly solutions.



This tradition of excellence continues exclusively at :
949 10th Street West, Owen Sound, Tel: 519-376-5121

people

AT HOME

First Outdoor Chore:

Putting away the snow shovels. **Favourite Word:** Phenomenal. **Fun Saturday**

Night: Playing cards with friends.

BUCKET LIST: To go whitewater rafting again!

JEFF LOCKWOOD
DIRECTOR OF MEMBERSHIP

Owner, Lockwood Painting

Lockwood Painting, a professional, full-service painting and decorating company, has been providing priming, painting and staining services to residential and commercial clients in Grey, Bruce, Simcoe and Wellington counties since 2008.

I originally joined GBHBTA for the business networking opportunities in hopes of expanding my business. I still have networking opportunities but now appreciate the education provided through our knowledgeable guest speakers and exciting tours.

Membership has helped increase our targeted business contacts coupled with the prestige that comes with being a member. Financially, our sales have more than doubled every year since becoming a member. **OH**



PRECISION DECK AND FENCE



Your deck is an extension of your living space
...a place to unwind and entertain.

Precision Deck and Fence
is here to make your
dream outdoor living space a reality.

Whether it's off the entrance
or at the water's edge, together we can
create your perfect outdoor retreat.

www.precisiondeckandfence.ca
519.377.8130

SEE OUR DIRECTORY FOR ALL CONTACT INFORMATION.

VERTICAL VIBES

STORY **CONNIE
JESKE CRANE**

CREATIVE WAYS TO GIVE PLANTS
THE SPOTLIGHT IN YOUR HOME



MONSTERAS, POTHOS, STRING-OF-PEARLS, BOSTON FERNS - AND LET'S NOT FORGET SUCCULENTS. IT SEEMS WE CAN'T GET ENOUGH GREEN IN OUR HOMES THESE DAYS. IN 2020, HOUSEPLANTS CONTINUE TO BE ONE OF THE HOTTEST DÉCOR TRENDS, FUELLED BY INSTAGRAM AND THE MILLENNIAL OBSESSION WITH "PLANT PARENTING."

But tucking a few potted pots in a corner isn't going to cut it. With houseplants today, it's all about going big. Plants are becoming focal points in homes, rather than fading into the background.

Vertical gardening is a perfect fit with today's more-is-more approach. From rustic wall-mounted herb planters to swingy macramé retro plant hangers or sophisticated living walls, this trend is all the rage – and can be integrated into any price point or living space.

Amanda Matfin, founder of Greenteriors, says today's wall-adorning installations deliver a dramatic, living-and-breathing aesthetic to your home. "It just transforms the space completely."

Continued on page 98

Riverside Greenhouses

OPENING: TUESDAY MAY 5th

Beautiful Hanging Baskets, Planters & Window boxes
Perennials & Pollinators | Vegetables & Herbs
All customized for YOU.

Tuesday to Saturday 9-5
Sunday 12-4
Closed Mondays except Victoria Day.

519-599-3533
www.riversidegreenhouses.ca
riversidegreenhouses@gmail.com

YOUR CONTAINER GARDEN SPECIALISTS

Cook CONCRETE

Concrete Foundations & Floors
Excavation Services
Sidewalks & Driveways
ICF Homes
Residential, commercial, & agricultural

Serving Grey Bruce & Wellington Counties.

519.375.5439



**GREEN ACRES
LANDSCAPE & FENCE**

greenacreslandscape.ca Walkerton, ON 226.230.0524

Deck Building | Aluminum Railing | Fence Building
Irrigation Systems | Interlock Work | Lawn Care
Garden Sheds | Armour Stone Work

Serving Bruce & Grey Counties!

gardening

WANT TO CREATE A GORGEOUS GREEN FOCAL POINT IN YOUR HOME? HERE ARE SOME IDEAS TO GET YOU STARTED.

LIVING WALLS

What is a living wall?

A living wall is a system that allows plants to grow on a vertical panel, and can be either water-based (hydroponic) or soil-based. Professionally constructed walls have their own irrigation systems and are available in two types: passive, which provides water and nutrient delivery; and active, which mechanically circulates air through the wall to improve indoor air quality.

On the higher end, living walls are lush, organic backdrops. Most often you'll see them gracing corporate headquarters and public buildings – but if you really love them, you can bring this concept home, too. Perfect for clean, modern interiors, Amanda says a living wall is like a large art piece and makes a bold design statement: “There’s always that fun, wow factor. If you host a dinner party and people come over and they see it, they are like, ‘Oh my gosh!’ It’s a talking piece.”

So what’s involved? To really thrive, the first thing living walls need is proper planning and installation. Amanda says the process usually starts with an in-home consultation, during which a consultant evaluates your space and available light to determine what artificial light you may need, then discusses your plant and design preferences.

The best time to bring in a consultant, says Adam Holder, sales and client relations manager with Nedlaw Living Walls, is prior to a renovation or new home construction. And once your project has been installed, he reminds homeowners that maintenance is key to the living wall’s survival – even with built-in irrigation. As Adam says, “It’s a baby; it needs love.”

Adam points out that maintenance is one area where homeowners can save a bit on costs. Typically, installations require a monthly maintenance call, where a technician will “maintain the plants, look at the system, check that things are running optimally, prune the plants.” But alternatively, Adam says, his company can teach clients how to perform their own maintenance.

To integrate a professionally designed and installed living wall into your space, basic systems start at around \$175 per square foot and more complex ones can reach up to \$300 per square foot, depending on your specific requirements and personal preference.



Chapman House Project – Nedlaw Living Walls



Wally Pro Pockets – WallyGro



Wally Eco Wall Planters – WallyGro

DIY VERSIONS

There are simpler, more cost-effective ways to achieve green, vertical impact. From DIY vertical wall kits to popular vertical wall planter systems like WallyGro.

PLANT CHOICES

When it comes to the fun stuff – choosing plants – for either DIY or high-end routes, Amanda’s recommendations lean toward plants that traditionally do well indoors. Tropicals predominate here, she says, adding, “It’s almost impossible to kill pothos, ivy, spider plants, snake plants.”

TALK TO A PROFESSIONAL

Even if you’ve chosen the DIY route, Amanda always recommends getting some advice first. “Still reach out and chat with a professional, because there are a lot of new systems coming onto the market... And at the end of the day, there are a few factors that need to go into a living wall to ensure it’s going to be successful.” OH



WEST SHORE
STONE & BRICK

Stone & Brick for New Homes & Renovations
Thin Stone Veneers • Mulch (bulk & bagged)
Topsoil/Aggregates • Steps/Flagstone/Rockery
Fire Pit Kits • Paving & Patio Stones
Landscape & Masonry Products

Showroom/Yard is South of Kincardine
1.5km East of Hwy 21 on Conc. 12
519.395.2747 • www.WestShoreStoneandBrick.com

**BUY DIRECT FROM
THE SAWMILL!**



**BUYER OF STANDING TIMBER | ALL DECKING MATERIALS
BOARD & BATTEN | T&G SIDING
WHITE PINE FLOORING | POST & BEAM**
Call us for current pricing and availability.



**TIMBER INC
MOGGIE VALLEY**
HOLLAND CENTRE • 519 794 0018
www.moggievalleytimber.ca

relationship BUILDING

STORY **SARA MARTIN**
PHOTOGRAPHY **SANDY MACKAY**

*DENNIS AND JULIE GRAHAM ALWAYS BUILD ON SOLID GROUND. **CANDUE HOMES** BUILT THE COUPLE'S FIRST HOME IN DURHAM AFTER THEY MARRIED MANY YEARS AGO. BUT AS THEIR FAMILY GREW WITH THE BIRTH OF THEIR TWO DAUGHTERS, NICOLE AND BREANNA, THEY NEEDED MORE SPACE.*

Continued on page 102

The large island by Barzotti Woodworking is painted Benjamin Moore City Shadow and the cabinets Cloud White. **OPPOSITE:** White Oak Saddle engineered hardwood floors shine in the space between the island and perimeter cabinets. The counters are topped with Leathered Casablanca granite from The Old Barn.



The front foyer overlooks Fairline Stairs to the lower level. The California Gold tile follows the linear line of the hardwood flooring. **BELOW LEFT:** The pantry is used as a coffee station as well as for dry goods and overflow storage. Counters and cabinets match the main kitchen, creating a cohesive design. **BELOW RIGHT:** Don Tremble of Candue Homes and Dennis and Julie Graham have a visit at the kitchen island.



They found a 6,000 square foot home on the same street as **Don Tremble**, owner of Candue Homes. Don's wife Susan, Candue's office manager, went to school with Dennis and the couples have been friends for more than 30 years.

Years passed, the Grahams' nest emptied, the home became too big and they were ready to downsize. Dennis and Julie began a search for acreage to build their forever home but finding the ideal plot proved difficult and they considered other options. They soon spotted a lot in the Marshall Heights subdivision, minutes from downtown Durham. It was two acres with a wooded area at the back that gave it a rural feel. Dennis approached Brian Padfield, the owner of the lot and the developer of the subdivision to see if he would sell, and he did.

They quickly turned to Don at Candue to build their new custom home. Over the years, the Grahams watched Candue build homes, townhomes, cottages and communities and they were always impressed with the quality of construction. "I really enjoy making

Continued on page 104



"I REALLY ENJOY MAKING PEOPLE'S DREAMS COME TRUE."
– Don Tremble

The handcrafted beams and mantel add a rustic touch to the living area. The master bedroom is located to the left of the fireplace. Benjamin Moore Cloud White was used for the trim throughout the home and Gray Owl adds a soft glow to the walls and ceiling.



TOP: The stone surround extends to the ceiling peak, and timber-frame detail defines the front foyer from the living room. The transom windows over the doors were custom built by Gary Hastie. The guitar was a gift to Dennis from his daughters and learning to play is a retirement plan. **ABOVE:** The staggered roof lines, timbers, shingles and stone from Shouldice Designer Stone combine to create a warm and welcoming exterior facade.

people’s dreams come true,” says Don. Candue celebrates its 30th anniversary this year. Don and his team have built many homes over the years and his clients value his insight and experience.

Dennis and Julie found the plans for their new home online. They had a very clear vision of what they wanted: something light and airy, a little rustic with a farmhouse feel, great for entertaining, yet cosy when it was just the two of them. They wanted an efficient layout with an easy flow. The plans were tweaked to include a main floor master bedroom, laundry and office. Julie wanted a kitchen that was a few steps from the garage and transom windows in each of the interior doorways to capture that farmhouse feel. The lower level would be for their girls when they came to visit. It included two bedrooms, both with en suites, a gym and a large casual sitting area with a bar and game zones. *Continued on page 106*



ABOVE: It was Julie’s idea to extend tile plank flooring up the wall in the powder room. **ABOVE RIGHT:** The laundry room is located steps from the master suite. Cabinets from Barzotti Woodworking are painted with Benjamin Moore City Shadow. Pratt Plumbing & Heating completed all the plumbing in the home. **BELOW:** An en suite contains a large glass-enclosed shower with dual shower heads.



“IF THERE IS SOMETHING THAT THE HOMEOWNER IS NOT HAPPY WITH, I WANT TO BE ABLE TO MAKE THE CHANGE.”
– Don Tremble



A lower level bedroom is spacious and full of light. Turquoise is used as a pop of colour in the space. Benjamin Moore’s Collingwood was used on the walls throughout the lower level.



Furnishings in the master bedroom add a farmhouse feel. Window coverings were sourced at Wilson Solutions. The unique leaded windows are from Golden Windows. **TOP RIGHT:** The double vanity in the master suite is painted Benjamin Moore Wall Street and the Sky White counter is from The Old Barn. The pocket door leads to the master closet. **RIGHT:** A niche located between the two rain shower heads in the master bathroom is at a handy height for soap and shampoo. The stool is teak, which can withstand the wet environment.



Upstairs in the master suite, they wanted pocket doors that offered a barrier free flow from the bedroom to the bathroom, walk-in closet and laundry room. (Custom closets and blinds by **Wilson Solutions**.) When they were happy with their initial plans, they took their drawings to **Murray Norris of Homes by Design**. The drawings became architectural plans that triggered the start of construction. Candue got to work, using building materials from **Young's Home Hardware Building Centre**. Dennis and Julie first saw their home when it was framed, the most important stage of the building process. Don says clients are used to looking at

one-dimensional plans and the switch to a three-dimensional building gives new perspective. "If there is something that the homeowner is not happy with, I want to be able to make the change, and the framing stage of a build offers that opportunity," says Don. "Later in the build it can become difficult or just not possible." He says actually walking through the roughed-in rooms, looking through openings where windows will be installed, and walking through doorways and into rooms can reveal how the design works, and if changes are required. "He let us lead this build, to get the outcome we wanted," Dennis says.

Continued on page 110

The Candue Difference

Integrity | Diligence | Results

CANDUE HOMES

519-369-5051

homes@canduehomes.com

www.canduehomes.com

- NEW! Coming soon.... Carriage Crossing Subdivision Durham (Singles, Semis and Townhouses)
- JDR Subdivision Walkerton – Semi Spec Available Spring Occupancy
- Forest Creek Estates – Spec Available Spring Occupancy
- 1 Lot Available MacDonald Crescent, Durham
- Hanover Subdivision - 2 Spec Homes with Spring Occupancy

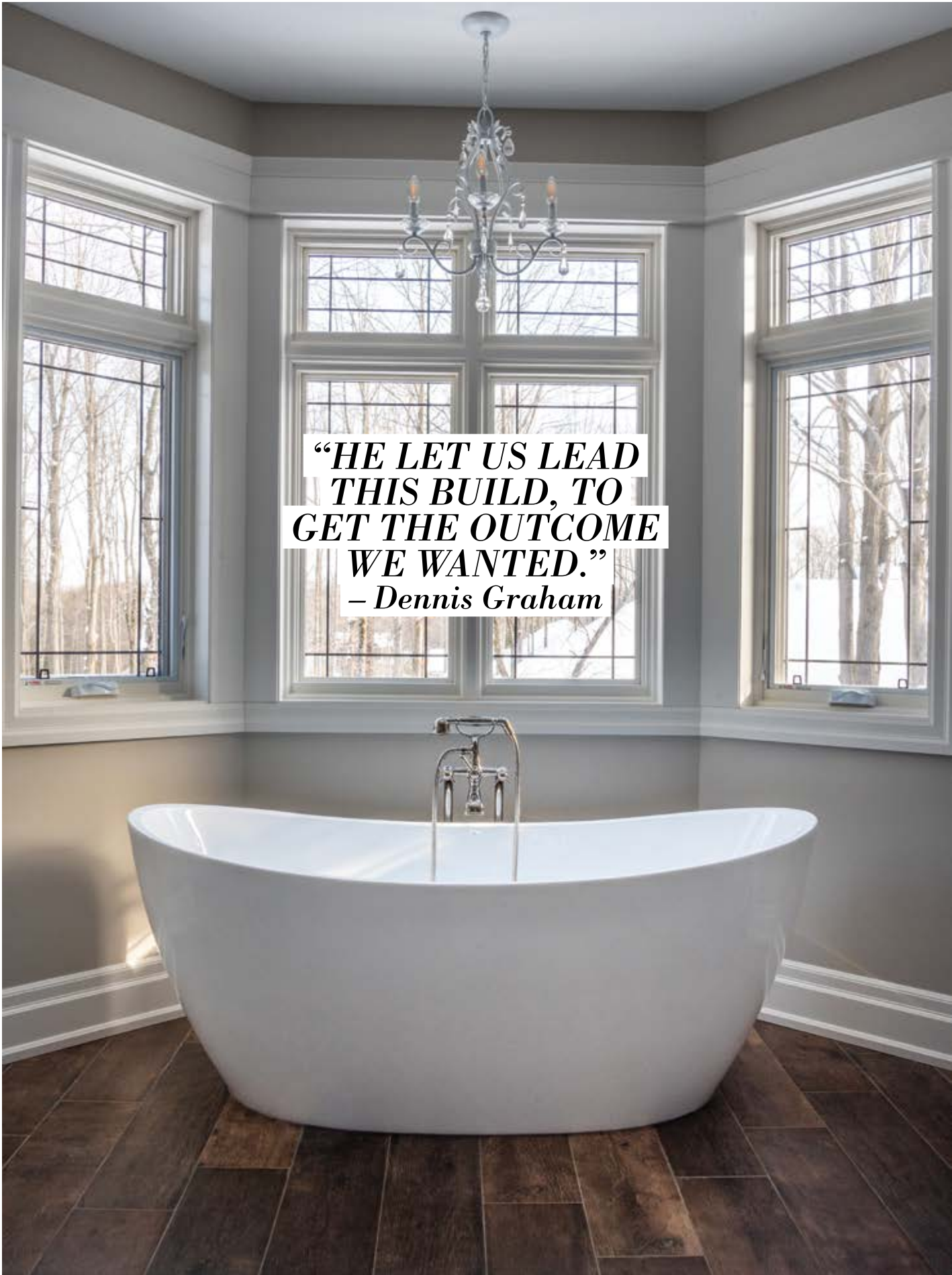


Premier Industrial Painting



Epoxy Floors - Residential, Commercial & Industrial
Media Blasting | Staining
Sealing | Painting

Call us today for a free estimate!
Office: 519.506.3735
Cell: 226.668.5918
premier@wightman.ca
premierindustrialpainting.ca



**“HE LET US LEAD
THIS BUILD, TO
GET THE OUTCOME
WE WANTED.”**
– Dennis Graham

GEORGIAN

BAY HOME WORKS

Serving the Georgian Triangle

CUSTOM UPGRADES ▲ RENOVATIONS
FENCING ▲ SIDING ▲ DECKS

georgianbayhomeworks@gmail.com

226-974-1417  



LOCATED AT GREY RD. 4, MAXWELL, ONTARIO



www.therustystar.ca | (519)-922-2010 | therustystar@live.com

Solid Wood Furniture · Home Décor · Giftware



Benjamin Moore®

COLOUR OF THE YEAR 2020

FIRST LIGHT
2107-70



Come in for your
complimentary
colour brochure.



**1580 20th Street
Owen Sound
519.371.4207**

GreyBrucePaint.com



ABOVE: A leather sectional in the lower-level family room has hosted many movie nights. Josh Paylor built the live-edge bar counters. Vintage galvanized steel was used for the backsplash. **RIGHT:** Dennis and Julie laid the fireplace feature wall on the floor before it was installed in the family room. Julie enjoys playing the piano and singing. **BELOW:** The hightop table is strategically placed to watch a game of shuffleboard in the family room.

There was a mutual trust throughout the build and the couple respected Don's advice.

Dennis and Julie are proud to point out features that make this home unique, including an abundance of windows with leaded detail from **Golden Windows Ltd.** that frame the view to the wooded area at the rear of the property. They love the many hand-hewn beams that frame the soaring living room ceiling, handcrafted by **Keiran Glass**. In the kitchen, cabinets by **Barzotti Woodworking** and stone counters by **The Old Barn** create a functional, beautiful space with plenty of room. The transom windows and rustic bar cabinets custom built by **Gary Hastie**, along with the live edge bar and counter built by **Josh Paylor**, add a personal touch to the home.

The Grahams moved in a year ago and their home is everything they hoped for – there isn't one thing they would change. If they ever find their dream property, they say they would hire Candue Homes to build the exact same home. **OH**



Visit our showroom at 317680 Hwy 6 & 10, Owen Sound
WWW.CCHARM.COM 519-376-4434





PORT ELGIN HOME HARDWARE

Last Spring's Grand Opening of **Port Elgin Home Hardware's** new Garden Centre was a tremendous success and we can't wait for this Spring's reopening. Watching the Garden Centre come alive with colour is almost as exciting as the arrival of Spring itself!

We will be featuring **Mark's Choice** products like Premium Quality annuals, perennials and flowering shrubs, fertilizers, topsoil, and garden mulches. Plus unique garden décor, garden stones, lots of gardening tools, wheelbarrows, and a variety of lighting options.

Of course, we'll have BBQ's, patio furniture, deck boxes and rain barrels, too. If you don't see what you need, we'll help you find it.

Our **Toja Grid** pergola systems sold very well last year, and we expect them to be just as popular this year. We've received great feedback from satisfied customers who purchased the system from us for their backyard shade. They now have a 6" option for larger builds, too. We're happy to show you all the options to help create your backyard oasis.

Come take a stroll through the garden, at Port Elgin Home Hardware Garden Centre. **924 Goderich St, Port Elgin 519.832.2466**

(Please see ad on pg 17)



GEORGIAN BAY HOME WORKS

Georgian Bay Home Works is a contracting team that is committed to offering quality workmanship and great customer service.

Working closely with our clients is key to achieving the best possible results. Our relationships with our customers is important to us. The best compliment a client can give is a referral.

Our team of experienced tradesmen can handle many of your new home or renovation needs. Our services include siding, decking, window and door installation, fencing and hardwood flooring.

How long have you waited to remodel the bathroom or install new hardwood flooring? Is your basement unused and only halfway finished? Or not finished at all?! Do you want to make your home exterior more inviting and accommodating? Regardless of the upgrade that you plan to perform, the chances are you may never get around to your DIY remodel. It's time to call in the experts and let Georgian Bay Home Works take over. Armed with experience, skill, and integrity, we feel confident in our ability to perform any home renovation project

2020 is booking up quickly. Let's get together and work out a plan to make your dream home a reality.

Call 226.974.1417 or visit us on Facebook or Instagram georgian_bay_home_works

(Please see ad on pg 109)



BREATHE EASY WITH QUALITY INDOOR AIR!

Weather is unpredictable! This leads to fluctuating temperatures and humidity in your home causing everything from health issues, problems with floors and furniture, mildew and condensation. Not to mention making you, your family and pets uncomfortable!

Air conditioners do more than keep you cool. They remove humidity from your home, easily controlling indoor air quality and humidity. With many highly efficient options available, these units tend to pay off over a short period of time.

Heat Recovery Ventilators exchange stale air with fresh air during the cooler months.

Humidifiers eliminate dry air and static electricity over the winter, adding moisture to the air, while dehumidifiers remove moisture in the warmer seasons.

Air cleaners eliminate airborne contaminants such as pollen, mould, fungi, bacteria, viruses, dust mites, tobacco, cooking, smoke and other toxins such as household cleaners, paints and varnishes.

All of these options help keep mildew, allergies and sickness at bay, making life more comfortable and enjoyable.

For years **Air-Tech Mechanical** has been helping customers solve these issues by installing proper ventilation systems in their homes to create a clean, comfortable environment for their families. Contact us to discuss a system specifically suited to your home.

air-tech.ca
(Please see ad on pg 29)



CRAIG GALLERY

Find something different in this light filled art gallery located in Meaford, Ontario. Set in a large space, the gallery displays works in a variety of mediums including painting, sculpture, photography, pottery and jewelry.

Craig Gallery is owned and operated by Jonathan Craig and Bridget Light, who live in the municipality of Meaford near Bognor and were inspired to open the gallery by their love of art and desire to be more involved with the community. Jonathan is also a camera operator for television, and a special FX makeup artist in TV and film. Bridget is a painter who also works professionally in digital media.

Jonathan comes from a family of artists, and it was the idea of having a "family gallery," where everyone's work could be displayed together, that sparked the original genesis for Craig Gallery.

Philip Craig (Jonathan's father), is a renowned Canadian painter, based out of Ottawa. His work is shown in galleries across the country and is collected around the world. Also featured are works by Jonathan's siblings: Shannon Craig Morpew, an established painter and Jordan Craig, a professional photographer.

Craig Gallery also shows several other local and Ontario artists and plans to host workshops and events beginning spring 2020.

4 N Sykes St, Meaford 519.538.3671 | craiggallery.ca info@craiggallery.ca
(Please see ad on pg 27)



MAXWELL GARDEN CENTER

Located in Grey County and in Business since 2003, **Maxwell Garden Center** is a family owned and operated business that strives to offer quality products at a competitive price and service.

In 2006, Maxwell Garden Center began selling Dundalk Leisure Craft Products, a line of saunas, hot tubs and outdoor showers, etc. This line of quality spa products has generated a lot of interest because of its many health benefits. We also design and build custom sheds, cabins, horse shelters and row barns that far exceed the quality of those offered by big box stores. We have many different sizes and styles of saunas, hot tubs, sheds and cabins to choose from, and ALL are locally made. We deliver and assemble on site so you don't need a lot of room for a big delivery truck and your purchase can be placed in the back corner of your lot or lakeside hassle-free.

We also have some display models on our lot if you would like to take a closer look.

For more info please contact us or visit our website: maxwellgardencenter.com 453897 Grey Rd.2, R.R.#1 Maxwell 519.922.1479 | 844.564.0224
(Please see ads on pg 39, 61)



McMILLEN ELECTRIC AND COMPLETE HOME INSPECTIONS

McMillen Electric and Complete Home Inspections is locally owned and operated, and committed to serving Grey and Bruce counties. We work hard to provide quality work at reasonable rates, and take pride in each job that we complete. Customer satisfaction is a top priority!

Whether you need electrical services for new construction projects, renovations, or repairs, we are here to meet your residential and commercial needs. Some of our services include:

- Electrical installation for new construction
- Panel and service upgrades
- House rewires (replacement of knob and tube wiring, ungrounded wire)
- Surge protection
- Installation of fixtures, wiring devices, recessed and low voltage lighting, in-floor heat, baseboards, hot tubs, security and landscape lighting
- Generator installations (standby, or portable plug-in)
- Smoke detectors and strobe lights

McMillen's also provides professional home inspection services to help customers make informed decisions when buying or selling a home. We apply knowledge and skill to visually inspect possible defects and examine the overall condition of your home using a simple and easy to understand written report (including photos, illustrations, and recommendations).

We look forward to meeting your electrical and home inspection needs!
519.378.4909 mcmillenelectric.ca
(Please see ad on pg 51)



MARTIN'S HOME HARDWARE

Martin's Home Hardware is a full-service hardware store in Southampton, Ontario, specializing in Outdoor Living and Paint and Decorating. Our collection of outdoor products features brands such as Weber, Napoleon, Big Green Egg, Kamado Joe and Traeger barbecues, Sundance Spas, and Kingsley-Bate, Cabana Coast, and CRP furniture. With delivery, installation, and maintenance services, we'll get you set up to enjoy life outside.

As a Benjamin Moore signature store, our team of colour consultants and paint experts provide personalized service to help you achieve the look and results you want for all your decorating projects.

From lighting and window coverings to décor, we have everything you need to complete your home.

For your new bathroom, we offer a full lineup of fixtures and accessories, including custom vanities by Stonewood Bath Cabinetry. With your choice of materials, finishes, and hardware, you'll get the vanity you desire, designed specifically to fit your space.

We've been serving the community for over 40 years, and are dedicated to being your destination for all things to live comfortably and enjoy your home.

519.797.3645 martins.ca
(Please see ad on pg 6)



OWEN SOUND'S HOME & COTTAGE EXPO

"Better than a big city show!" – a comment by one of our thousands of happy visitors.

This isn't your usual small-town home show. After more than 20 years under the guiding hand of its three host partners, the **Home & Cottage Expo** is well-established as the only truly regional home show in the area, drawing exhibitors and visitors from throughout southern Ontario. Exhibitors know they will meet serious consumers and not only pick up solid leads, but also sign up customers, and sell products. Visitors will find the best selection of exhibitors north of the 401.

Stop by the Home & Cottage Expo on April 25th or 26th to meet contractors, interior designers, landscapers, home improvement specialists, outdoor recreationalists, consumer electronics suppliers, and much more – all in one convenient location. This year, the Home & Cottage Expo is presented by Sunspace by Grey Bruce Patio Enclosures.

Check out the Home & Cottage Expo at the Bayshore Community Centre in Owen Sound on Saturday April 25th and Sunday April 26th, 2020. **Visit homeandcottageexpo.com for more details.**

(Please see ad on pg 91)



APBLETT GROUP – SOTHEBY'S INTERNATIONAL REALTY CANADA BROKERAGE Julia Apblett*, Nicole Walton*, Scott Moynihan*

For those who seek an exceptional life, the **Apblett Group** has you covered. Working with both Buying and Selling Clients, each one with a unique idea of an exceptional life. From stellar chalets nestled in the escarpment, to stunning waterfront retreats with panoramic views of the bay, they have you covered.

The Apblett Group prides themselves on client relationships and luxury service during and long after the transaction. You can learn more about the group directly from clients by reading testimonials found on their profile at sothebysrealty.ca and juliaapblett.com.

Sotheby's International Realty Canada Brokerage offers exclusive marketing and sales network showcasing homes to more qualified Buyers in Ontario, across Canada and around the world. Offering the highest caliber of service and marketing regardless of your property's size, neighbourhood or price point.

The Apblett Group is far reaching serving Grey/Bruce, and Southern Georgian Bay – Collingwood, The Blue Mountains, Wasaga Beach, Barrie, Lake Simcoe and Muskoka. Specialties: Mountain/Ski, waterfront, investment and residential properties.

apblettgroup@sothebysrealty.ca
Direct: 705.888.2877
Office: 705.416.1499
*Sales Representative

(Please see ad on pg 77)



INVEST IN THE SUN!

Every hour, the sun beams onto Earth more than enough energy to satisfy global needs for an entire year. Energy tides are turning and solar is being installed worldwide at an incredible pace – and Grey-Bruce is no exception.

Blackline Power offers two grid-connected solar options, net metering and zero export. It is an amazing feeling knowing that your property is being powered by clean energy. Having a predictable electricity bill that is insulated from rising costs for 30-40 years is also a strong motivation. Solar is an excellent investment environmentally and economically that cannot be compared to real estate, stocks, etc. These can fluctuate wildly – solar does not.

There are no "typical" solar clients. Everyone from homeowners and farmers to commercial businesses are finding value in solar. Contact Blackline Power. They will evaluate your options and answer all of your questions. They have installed hundreds of rooftop and ground systems since 2010 and are highly trained/educated. Owner Rob Black is one of only 15 NABCEP-certified installers in Ontario. They guarantee that you'll love going solar!

Owen Sound
519.371.8945, 888.438.3005
blacklinepower.com

(Please see ad on pg 61)



CHANTICO FIREPLACE GALLERY

For your safety, solid fuel heating appliances should always be installed by qualified professionals who are insured and hold certificates indicating their training and expertise.

A professional should properly size your heating unit. All component parts, including stove and chimney, should be sold and installed as a unit. Fireplace inserts, masonry fireplaces and pre-fabricated metal fireplaces are also specialized appliances and should be installed professionally.

Follow these simple guidelines for the safe operation of a wood-burning stove.

COLD START:

- Start the fire using crumpled newspaper and kindling arranged in a criss-cross pattern.
- The kindling load should be sufficient to pre-heat the chimney and the stove's internal surfaces.
- Once kindling is flaming, add larger kindling to the fire.
- Once the larger kindling has charred and a stable fire has been established, add firewood, leaving the combustion air controls open until the stove reaches its operating temperature.

Our showroom will open at the end of March. Please feel free to stop by at 6606 Line 87, Listowel, Ontario to see the latest styles and colours you can choose from for your personalized space.

Our new website will be up and running in June. Visit us at Aeonickitchens.com; for now check out H2customwoodworks.com and jwoodkitchenandbath.com for references and samples of our past work.

Open 8am-5pm Mon-Fri, and Saturday by appointment only
Contact us for a free quote today, 519.472.0326
aeonickitchens.com | Follow us on for current projects

(Please see ad on pg 13)



AEONIC KITCHENS

Aeonic Kitchens is a custom cabinetry business, just minutes outside of Listowel. Our growing team brings creativity and experience to every project, from kitchens to vanities to mudrooms and more. Recently H² Custom Woodworks & JWood Kitchen and Bath merged to form Aeonic Kitchens, allowing us to combine resources and provide even more services to our growing clientele. From design to installation, we are actively involved every step of the way. With 20 years of combined experience, we provide an enriching and enlightening experience for every customer that leaves them with a quality, functional living space that mirrors their lifestyle.

Many changes are happening at Aeonic Kitchen in 2020. We are developing new, higher quality standards for production, building a new showroom and website, however, our main priority is still you, our clients. We take pride in providing quality service from start to finish.

Our showroom will open at the end of March. Please feel free to stop by at 6606 Line 87, Listowel, Ontario to see the latest styles and colours you can choose from for your personalized space.

Our new website will be up and running in June. Visit us at Aeonickitchens.com; for now check out H2customwoodworks.com and jwoodkitchenandbath.com for references and samples of our past work.

Open 8am-5pm Mon-Fri, and Saturday by appointment only
Contact us for a free quote today, 519.472.0326
aeonickitchens.com | Follow us on for current projects

(Please see ad on pg 29)

Grey Highlands Home Show 2020

Saturday
April 18

9:00 am – 3:00 pm

Flesherton Arena

greyhighlandshomeshow.ca

2020 GREY HIGHLANDS HOME SHOW

The Municipality of Grey Highlands is excited to present the **2020 Grey Highlands Home Show**, a must-visit event for anyone who is interested not only in where they live, but also in how they live.

The 2020 Grey Highlands Home Show will showcase close to 100 exhibitors and presenters focusing on home improvements, renovations, real estate, landscaping and other home and garden related services.

This year's Show will also include an Artisanal Marketplace and a demonstration stage in the main trade show venue. It will feature speakers throughout the day focusing on a variety of home and garden related topics. Visitors to this year's show will notice a focus on future-friendly, environmental and sustainable building practices and trends.

With free admission, free parking, a children's craft zone, interactive exhibits, bucket loads of inspiration and the best-of-the-best in local building and design, the Grey Highlands Home Show is the place to be on April 18th, 2020.

For further information about showcasing your business as part of this event, please contact homeshow@greyhighlands.ca

A full list of exhibitors and presenters will be available at greyhighlandshomeshow.ca
2020 Grey Highlands Home Show
Saturday, April 18 – 9am to 3pm
Flesherton Arena,
2 Highland Dr, Flesherton
greyhighlandshomeshow.ca

(Please see ad on pg 119)



SOUTH-PORT MECHANICAL GEOTHERMAL

For decades, the team at **South-Port Mechanical Geothermal** has been installing and servicing fireplaces, furnaces, A/C units, ductless systems, in-floor heating, geothermal, water treatment systems, water heaters and plumbing needs. Providing quality products, expert knowledge, technical services, and the best customer service possible – our friendly office staff to our experienced installers – they all work closely with the customer to ensure satisfaction. An efficient HVAC system is important to the comfort of your family throughout the seasons of the year.

South-Port Mechanical Geothermal is excited to announce the opening of their new showroom based north of Kincardine off Hwy 21 on Conc 9. Stop in and experience the warmth of the many fireplaces on display and talk to our in-house expert about your needs and dreams for your home.

Featuring Canadian made products like Napoleon and Valor, we also offer Carrier, Excalibur Water Treatments and many other top brands.

Design, service and installation for Residential and Commercial applications is our specialty. Whether you're looking for a new build installation or an upgrade to your existing equipment, we offer a free in-home assessment and quote.

519.396.2665
1362 Conc 9, Kincardine
south-portmechanical.com

(Please see ad on pg 10&11)



MILLER LAKE RONA

Miller Lake RONA has been serving the Bruce Peninsula for over 40 years with quality building and finishing materials.

Whether it's a custom home or cottage, renovation, addition, garage, deck, new kitchen or bath, we are here to help you at stages throughout your projects. We are a full-service building centre stocking select high quality products and providing superior customer service.

Come visit our Kitchen Design studio and view the latest trends and interior style choices. We have access to items in-store, online and custom designed to make your project unique and complete.

If your project requires any assistance our friendly knowledgeable staff can help you achieve your project goals, **We are located at 4707 Hwy 6, Miller Lake**

Open Monday through Friday 7:30am to 5pm
Saturday 8am to 4pm and
Sunday 9am to 1pm from May to September

Visit rona.ca to view our stock or give us a call 519.795.7729

We would be happy to help with your project details

(Please see ad on pg 75)



GREEN ACRES LANDSCAPE & FENCE

At **Green Acres Landscape & Fence** we can help you make the outdoors a part of your home. Whether you need decking, a patio for outdoor entertaining, or you're looking for more privacy in your yard by building a fence, we can help you with all your outdoor projects. We believe in exceptional customer service and providing quality workmanship. We take pride in every job, big or small.

When looking to complete your outdoor project, keep in mind that Green Acres also specializes in project management. We deliver quality builds on time and to your specifications by not over-committing our time. We maintain a manageable workload which allows for a more focussed process, a smoother transition from start to finish and a better overall experience for our customers.

Some of the services we offer: Fence and Deck Building, Armour Stone Work, Interlock Work, Lawn Care and Landscape Construction. **Contact us today via email galandscapeandfence@gmail.com or visit our website greenacreslandscape.ca and complete our online submission 226.230.0524**

(Please see ad on pg 97)

B&B for the Birds

PROJECT **DAWN MCCONNELL**
PHOTOGRAPHY **TARA CHATTELL**

HERE'S AN EASY WAY TO
CREATE A SMALL VILLAGE FOR
YOUR FEATHERED FRIENDS.

MATERIALS

Pre-fabricated plain wooden bird house
Acrylic paint
Scrapbooking paper, wrapping paper,
postcards or magazine pages
Mod Podge or diluted white glue
Bits of lace and/or embellishments
if desired.

TOOLS

Scissors
2 brushes (1 for glue and 1 for paint)



HOW-TO

Apply a base coat of acrylic paint.

Cut and glue paper onto desired area of the bird house in sections or in a patchwork design.

Topcoat entire bird house with Mod Podge to seal.

Add embellishments if desired. **OH**

The Municipality of Grey Highlands

*The place for
all seasons!*

FLESHERTON/MARKDALE
HOME HARDWARE

Flesherton &
Markdale



Markdale and Flesherton
Home Hardware for all your paint,
plumbing, electrical, hardware,
household and outdoor needs.
Markdale now carrying a wide
selection of safety footwear with the
best brands at great prices.
Come in and check out our
new product lines.
As always, our friendly staff
are here to help.

Markdale
519.986.3011
markdalehomehardware.ca

Flesherton
519.924.2430
fleshertonhomehardware.ca

TOP O'THE ROCK



Everything you need in 1 stop
Grocery-Deli-Bakery and More
ROTISSERIE CHICKEN & WINGS
The BEST GOURMET pizza!
Every Order Custom Made!
Daily Lunch & Dinner Specials
Many Locally Made Entrees & Desserts
QUICK & EASY
We hold ourselves to a higher standard.
YOURS!
Open Daily 7:30 a.m.

Grey Road #13
Eugenia
519.924.3244 519.924.3185

[re]IMAGINE

GREY
HIGHLANDS.

Home Show 2020

Saturday

April 18

9:00 am - 3:00 pm

Flesherton Arena

greyhighlandshomeshow.ca

FREE ADMISSION!



**Building your Dreams...
one bucket at a time.**

*Best-in-class loader lift capacity
Best-in-class 3-point lift capacity*



Mahindra
Rise.



STOLTZ
SALES & SERVICE

Listowel • Elmira • Mildmay

Mildmay • 1-800-829-2672
Elmira • 1-800-665-1561
Listowel • 1-800-665-2151

www.stoltzsales.com



CENTRE GREY
BUILDING SUPPLIES



Your one
stop home
building and
improvement store. We carry
lumber, insulation, plumbing,
electrical, roofing, handtools,
windows, doors, paint, cabinets,
and countertops.
Free delivery and estimates.



74 Lorne St., Markdale
519.986.2641
1.800.461.7093

STEVEN'S
RESTAURANT

**STEVEN'S
RESTAURANT**

Hwy 10 - Markdale
519 986 2303
Dine-in or Take-out

Serving Markdale and surrounding
areas for the last 39 Years. Enjoy
great food at a reasonable price
this holiday season and try one
of our eight local craft beers
on tap. We also have a private
room available for groups up to
fifty people. Banquet facilities
accommodate up to 50 people.

195 Toronto Street, Markdale
519.986.2303
www.stevensrestaurant.ca

READ HILTON &
GAIL CRAWFORD
Sales Representatives

**Selling
Real
Estate
in the
Beaver
Valley**



with global reach through
Christie's International
Real Estate
ReadHilton.com
Click for Gail's MOVIES
Read@ReadHilton.com
Gail@GailCrawford.com
CHESTNUT PARK REAL ESTATE LIMITED,
BROKERAGE



393 First Street, Suite 100
Collingwood
519.986.4545

directory

OUR HOMES attracts the area’s finest businesses to advertise in our pages, and utilize our unparalleled distribution and coffee-table appeal to market their products and services. We’re making it easier for you, our readers, to become educated as you plan your home- and real estate-related purchasing decisions. View these business ads online at [ourhomes.ca](#). The listings below are organized alphabetically by industry.

OUR HOMES is committed to ensuring the businesses below appear under the correct headings. To make a correction, or to have your business listed under more than one heading, please email bettyann.fawcett@ourhomes.ca. To have your business listed in our Home Resource Directory, call us to advertise at 519.986.2599.

ALTERNATIVE ENERGY

Blackline Power, 61, 114

APPLIANCES

Square Deal Neil’s TV & Appliances, 23

ART/ARTISANS/ART GALLERIES/STUDIOS/WORKSHOPS

Craig Gallery, 27, 112

BUILDERS

Alair Homes, 49
AND-ROD Construction Ltd., 73
Blackland Construction Ltd., 89
Candue Homes, 107
Dennison Homes, 35
Great Lakes Custom Homes, 93
High R Construction, 39
Hill Build, 64&65
Rahn Bros. Contracting, 61
The Great Lakes Frame Company, 14
Valley Home Improvements, 59
Warton Home Building Centre, 51

BUILDING/LANDSCAPE SUPPLIES

Centre Grey Building Supplies, 118
Flesherton/Markdale Home Hardware, 118
Hanover Home Hardware Building Centre, 36&37
Miller Lake RONA, 75, 115
Miller’s Home Hardware Building Centre, 47
Moggie Valley Timber Inc., 99
Port Elgin Home Hardware Building Centre, 17, 112
Warton Home Building Centre, 51

CABINETS & MILLWORK/ CARPENTRY/FINE WOODWORKING/ CUSTOM FURNITURE

Aeonic Kitchens, 29, 114
Brubacher Cabinets, 47

Bruce County Custom Cabinets, 35

Exquisite Wood Design, 19
Luxury Woodworking, 8&9
South Gate Cabinets, 23
The Woodworm, 123
Topnotch Furniture, 128

CONCRETE/MASONRY/STONEWORK

Great Lakes Concrete, 59

COUNTERTOPS

Di Pietra Design, 12
Elegant Solutions/Cambria, 21
The Old Barn, 4&5

ELECTRICAL

McMillen Electric & Complete Home Inspection, 51, 113

EXCAVATING/SITE PREP/SEPTIC

Mulch-It, 89

FENCING/DECKS/GATES

Built Wright Fencing, 87
Georgian Bay Home Works, 109, 112
Green Acres Landscape & Fence, 97, 115
Postech Grey Bruce, 87
Precision Deck and Fence, 95

FINANCIAL/INSURANCE/ MORTGAGE/INVESTING

CMR Insurance, 14

FIREPLACES & STOVES/ACCESSORIES

Air Tech Mechanical, 29, 112
Chantico Fireplace Gallery, 13, 114
Pratt Plumbing and Heating, 123
South-Port Mechanical Geothermal, 10&11, 115
The Fyre Place & Patio Shop, 27, 55

FLOORING

Cuneo Interiors Carpet One Floor & Home, 6, 125
Miller’s Home Hardware Building Centre, 47
Moggie Valley Timber Inc., 99

FOOD & DRINK/RESTAURANTS/ CATERING/DELI

Steven’s Restaurant, 118
Top of the Rock, 118

FOUNDATIONS

Cook Concrete, 97
Postech Grey Bruce, 87

FURNITURE & HOME DECOR/ ACCENTS/GIFTS/COLLECTIBLES

Country Charm Mennonite Furniture, 111
Fulfords Hardware Inc., 33
Home Decor & More, 27
House Rules Design Shop, 33
Smitty’s Fine Furniture, 127
The Fyre Place & Patio Shop, 27, 55
The Rusty Star, 109
Topnotch Furniture, 128
Warton Home Building Centre, 51

GARDEN CENTRES/GREENHOUSES/ NURSERIES

Maxwell Garden Center, 39, 61, 113
Port Elgin Home Hardware Building Centre, 17, 112
Riverside Greenhouses, 97

GEOTHERMAL

Sandy Hamilton Plumbing & Heating Inc., 89
South-Port Mechanical Geothermal, 10&11, 115

GREEN LIVING

Blackline Power, 61, 114

HEATING & COOLING

Air Tech Mechanical, 29, 112
Pratt Plumbing and Heating, 123
Sandy Hamilton Plumbing & Heating Inc., 89
South-Port Mechanical Geothermal, 10&11, 115

HOME IMPROVEMENTS/ RENOVATIONS

Georgian Bay Home Works, 109, 112
Great Lakes Custom Homes, 93
Rahn Bros. Contracting, 61
Valley Home Improvements, 59

HOME INSPECTION

McMillen Electric & Complete Home Inspection, 51, 113

INSULATION

High R Construction, 39

INTERIOR DESIGN/HOME STAGING

Blended Interiors, 49
Cuneo Interiors Carpet One Floor & Home, 6, 125
Décor Design, 49
Fulfords Hardware Inc., 33
House Rules Design Shop, 33
K-Interiors, 35

KITCHEN & BATH

Aeonic Kitchens, 29, 114
Brubacher Cabinets, 47
Bruce County Custom Cabinets, 35
Exquisite Wood Design, 19
Fulfords Hardware Inc., 33
Hanover Home Hardware Building Centre, 36&37
House Rules Design Shop, 33
Luxury Woodworking, 8&9
South Gate Cabinets, 23
Warton Home Building Centre, 51

LANDSCAPE DESIGN & ARCHITECTURE/LANDSCAPING/ LAWN & GARDEN

Hutten & Co. Land and Shore, 3
Peninsula Out of Doors, 75

MACHINERY/SMALL EQUIPMENT/ FARM SUPPLIES

Stoltz Sales & Service, 119

ORGANIZATION/STORAGE

Blended Interiors, 49
Wilson Solutions, 7

OUTDOOR FURNITURE/STRUCTURES

Maxwell Garden Center, 39, 61, 113

PAINTING & DECORATING

Benjamin Moore, 6
Cuneo Interiors Carpet One Floor & Home, 6, 125
Dulux Paints Owen Sound, 93
Fulfords Hardware Inc., 33
Grey Bruce Paint, 109
House Rules Design Shop, 33
Lockwood Painting, 91
Martin’s Home Hardware, 6, 113

PAINTING, PRIMING, BLASTING & STAINING

Premier Industrial Painting, 107

PAVING/CEMENT/CONCRETE/ INTERLOCK

Cook Concrete, 97
Extreme Linings and Coatings, 55

PLUMBING

Pratt Plumbing and Heating, 123
Sandy Hamilton Plumbing & Heating Inc., 89
Smith Water Systems, 123

POOLS/HOT TUBS/SAUNAS/SPAS

The Water Store, 91

REAL ESTATE

Chestnut Park, 15
Chestnut Park – Read Hilton, 118
Royal LePage RCR Realty – Scott Crowther, 79
Sotheby’s Realty – Julia Apblett, 77, 114
Sutton-Huron Shores Realty Inc. Brokerage, 78

SPECIAL EVENTS

Grey Highlands Home Show, 115, 119
Owen Sound – Home & Cottage Expo, 91, 113

STONE PRODUCTS/VENEER

Shouldice Designer Stone, 2
West Shore Stone & Brick Inc., 99

TILE

Di Pietra Design, 12

TRAIL BUILDING

Mulch-It, 89

WATER TREATMENT/FILTRATION

Smith Water Systems, 123
The Water Store, 91

WINDOW TREATMENTS

Budget Blinds of Owen Sound, 75
Cuneo Interiors Carpet One Floor & Home, 6, 125
Décor Design, 49

WINDOWS & DOORS

Desboro Doors, 33



thinking about an ELECTRIC VEHICLE?

WHAT HOMEOWNERS NEED TO KNOW ABOUT EVs TODAY

STORY AND PHOTOGRAPHY **CONNIE JESKE CRANE**
ILLUSTRATION **SHEILA BRITTON**

At their home in Waterdown, Ruth and Ron Horst's collection of electric vehicles (EVs) has been growing.

The couple bought their first shiny Tesla Model 3 in the summer of 2018, almost by chance. As Ruth explains, a friend's son had "pre-ordered too many, so they gave us the option to take one off their hands." At the time, the car's \$60,000 sticker price was offset by \$10,000 thanks to a provincial rebate program (now halted). The couple found lots to love with their first EV, and this past September added a Tesla Model X – a pricier luxury SUV – to their fleet.

The Horsts are early adopters to be sure. The fact is, EVs still only account for a small percentage of cars on the road in Canada. But the buzz is growing and many auto industry observers predict a big shift is coming. Prices are coming down, more models are coming to market and vehicle driving ranges are increasing.

We talked with the Horsts as well as Cara Clairman (CEO of Plug'n Drive, an Ontario-based non-profit organization that promotes EVs) about what it's like to own an EV.

1 The driving experience

Lowered emissions are a given with EVs. What's also common is to hear owners rave about their car's performance and instant torque. "That's actually why you see sports car companies like Porsche and others saying they're going to electrify all their models," says Cara, "because gas can't really compete on a performance level." Ron agrees, saying of his Model X, "It's just got so much power. The power is right there, so you step on the accelerator and it just goes."

2 Convenience

As Ron says, "I don't stop at a gas station ever anymore! I remember in the winter filling up a gas vehicle and standing outside the car self-serve for five minutes in the blistering cold wind. With charging, there's no such thing." He also likes his Tesla's mobile-friendly options, such as pre-warming his car in the winter via an app on his phone.

3 Home charging

While you could charge your car at work or at a public charging station, most EV owners prefer home charging overnight. If you live in a condo and are considering an EV, check with your board about converting a parking stall at your building. (See plugndrive.ca for more information.) For single-family dwellings with off-street parking, Cara says the setup is simple. Chargers range between \$700 and \$1,500; installation by an electrician will run you another \$200 to \$700 for a Level 2 charging station, which Cara says, "is sort of equivalent to a dryer plug."

4 Lower operating costs

While owners have been paying a premium to buy an EV, prices are coming down. In addition, day-to-day EV drivers love saving money in other ways. Ron, for example, says he doesn't have to worry about rising gas prices anymore – and it only costs him about eight dollars to fuel up his EV. According to Plug'n Drive, with an EV, "The average Canadian driver travelling 20,000 km per year can save as much as \$2,000 per year on fuel alone." Additionally, says Ruth, "Maintenance costs are very low. You don't need an oil change; it's just your tires and brakes kind of thing."

5 More public charging networks

Today, the availability of public charging stations is better than most people think, says Cara. "There are more than 1,500 in Ontario alone right now. The only places where it's challenging still is in areas that are very remote." When they're out and about, she says apps like PlugShare and ChargeHub can help drivers locate the nearest charging point.



6 Wider range of makes and models

If you're looking for an EV, you have more choices today, says Cara, from hatchbacks to luxury cars, and adds: "It's really good to come to the Electric Vehicle Discovery Centre [in Toronto]. We have all the makes and models available to test drive."

7 Supply issues and wait times

On the downside, while there are more choices than ever, buyers typically face a wait time before they receive their new cars. As Automotive News Canada reported in 2019, "Waits of up to a year are not unusual."

8 Environmental considerations

Finally, there is an obvious eco-friendly aspect to EVs. According to Plug'n Drive, "The only greenhouse gas emissions associated with your electric car are from the generation of electricity...the average Canadian driver can reduce their car's greenhouse gas emissions by as much as 90 per cent."

WANT TO KNOW MORE?

If you're curious
about EVs, visit these
Canadian websites:

Canadian Automobile
Association's Electric
Vehicle Portal

caa.ca/electric-vehicles

Information on vehicles,
charging stations and
government incentives.

Electric
Mobility Canada

emc-mec.ca

A national not-for-profit
organization

Plug'n Drive

plugndrive.ca

A non-profit organization
that promotes electric
cars, offers test drives in
Toronto, shares industry
news and more. See
also chargemycar.ca,
Plug'n Drive's home
charging store.

PlugShare

plugshare.com

ChargeHub

chargehub.com

EV charging station
locator apps. ON



AIR CONDITIONING • WATER SYSTEMS • FIREPLACES

519-369-3411

We pride ourselves on offering the highest value
on all the products we service & install.



Delivering Innovative
Solutions in Wood

Mantels | Cabinets | Wall Units
Audio Visual Systems | Storage Units
Home Office Workstations | Murphy Beds
Kitchen Renos | Stone/Tile Backsplashes

THE
WOODWORM

317542 Hwy 6 & 10, Owen Sound
519-376-6323 | 416-525-7814
www.thewoodworm.com

SERVING ONTARIO FOR 55+ YEARS

Smith Water Systems
a division of SD Smith Drilling Co. Ltd.

✓ Wells
✓ Treatment Equipment
✓ Pumps
✓ Licensed by MOE
✓ Member of OGWA



519-986-4743 • smithwatersystems.ca

Advertise With Us



Give your business the benefit of premium exposure and connect,
like never before, to our extensive targeted readership!

Betty Ann Fawcett Account Executive
T: 519.986.2599 E: bettyann.fawcett@ourhomes.ca

finishing touch



PANTONE'S COLOUR OF 2020

CLASSIC BLUE



HARDWOOD • CARPET • LAMINATE • VINYL • TILE • LUXURY VINYL

Cuneo's
CARPET ONE FLOOR & HOME
Decorating Excellence Since 1948

873 10th St., Hanover, ON
207 Durham St., Walkerton, ON

www.cuneointeriorscarpetonehanover.com
800-265-1172

finishing touch



1. **BENJAMIN MOORE:** Paint in Delphinium CC-872, Blueberry Hill 812 and Blue 2066-10
 2. **COLE & SON:** Aldwych 94/5025 Wallpaper 3. **FARROW & BALL:** Tessella BP 3604 Wallpaper
 4. **PERONDA:** FS Faenza Tile 5. **MADE GOODS:** Arricka Chandelier – Blue Abaca Rope/Gold Metal
 6. **LEXINGTON HOME BRANDS:** Cobalt Meridian Bar 7. **REVELATION:** Regent Cachepot
 8. **SUNPAN:** Nevin Counter Stool in Sapphire Blue 9. **RENWIL:** Cobalt Table Lamp 10. **IKEA:** Smidie Dyed Sheepskin Rug in Dark Blue 11. **ARTERIORS:** Andrea Round Ottoman in Celestial
 12. **MADE GOODS:** Cole Stool in Cobalt Ceramic 13. **ABBOTT:** Graphic Knob in Dark Blue
 14. **STRUCTUBE:** Taub Planter with Hanger in Blue 15. **CB2:** Decker 2-Piece Sectional Sofa in Como, Indigo 16. **CB2:** Dorian Handknotted Blue and Grey Rug 17. **RENWIL:** Bluebird Pillow
 18. **BUNGALOW 5:** Hunter 2-Drawer Side Table in Navy Blue 19. **BED BATH & BEYOND:** French Home Laguiole Flatware Collection in French Blue 20. **ABBOTT:** Cup with Handle in Blue and White
 21. **UTTERMOST:** Sconset Vases 22. **CRATE & BARREL:** Omri Dinnerware 23. **DANICA IMPORTS:** Navy Metal Colander 24. **EASTERN ACCENTS:** Majorca Coral Reef Duvet Cover 25. **LA CORNUË:** CornuFé 110 Range in Royal Blue with Stainless Steel and Polished Brass Trim **OH**

PUT YOUR MONEY WHERE
YOUR HOME IS.

BUY LOCAL



FOR THE LOVE OF CANADIAN-MADE
FURNITURE

Smitty's
FINE
FURNITURE

Hanover Showroom 170 3rd Street 519-364-3800 Hours: M-F 10am-6pm Sat 9am-5pm Sun 11am-5pm
 Kitchener Showroom 170 Gateway Park Drive 519-658-9313 Hours: M-W 10am-6pm T-F 10am-8pm Sat 10am-6pm Sun 11am-5pm

smittysfinefurniture.com

Topnotch furniture

manufacturers of fine furniture



Custom Solid Wood Furniture

89446 Fordwich Line, 1 km North of Hwy 87, Gorrie

519.335.3213 topnotchfurniture.com  

