

The great room in this model features plenty of space for gathering and entertaining. Triple-glazed windows provide increased energy efficiency and soundproofing.

a gift from TIME

STORY DENISE WILLSON | PHOTOGRAPHY KELLY HORKOFF

When an area holds historic significance, by definition it dates from or is preserved from a past time or culture. It's a gift from time, which is why the Power Glen neighbourhood, a historic neighbourhood nestled in a quiet part of west St. Catharines, draws people with an appreciation for the past, nature and community. *Continued on page 26*



newer builds, Mill Creek was created using traditional materials, including stucco, steel and copper. Masonry materials with a quarried stone profile were sourced at **Burnstein Brick** and **St. Catharines Building Supplies**, which provided the three-colour blend interlocking brick used in the driveways. To keep in tune with the traditional architectural features of the homes and properties in the area, Rinaldi Homes, this year's winner of the **Niagara Home Builders' Association** Builder of the Year Award, added copper roof accents, hand-troweled stucco, and mahogany Richards-Wilcox's Landmark Rockwood garage doors that channel carriage house charm from **Yarnell Overhead Door Ltd.** "All of the townhomes in Mill Creek have covered front and rear porches – features seen on many of the heritage homes in the area," Danielle says. "In this neighbourhood, people really appreciate the beauty surrounding them so we really wanted to take advantage of that in the design." *Continued on page 29*

ABOVE: Aurora Bachert from The Ensuite, Selena Fabi of Rinaldi Homes, Lisa Littleton of Don's Light House, Joan Rinaldi of Rinaldi Homes, Moira McCreadie of Artcraft Kitchens and Rhoda Cipparone of Aristocrat Floors of the World are some of the local talent who worked on the interior look and feel of the models at Mill Creek. **OPPOSITE, LEFT:** High ceilings with additional windows bring lots of natural light into the living area of the great room. **RIGHT:** The front entrance offers a warm welcome.

REMNANTS OF THE 18TH CENTURY saw and grist mills dot the valley along with landforms from an old dam, millpond, and spillway that once powered the mills. Several heritage buildings and homes of workers from a generating station built in 1898 by the Cataract Power Company of Hamilton – earning the area its Power Glen moniker – also remain. Surrounded by trees and nature, and cut by Twelve Mile Creek, Power Glen is a hiker's dream. With friendly residents who are proud of the area's heritage, it's a great location

for those who crave quiet country living close to city amenities.

"It's a village in the city, a community that honours its natural and historic setting," says **Danielle Rinaldi** of **Rinaldi Homes**. "This was at the forefront of every decision we made when planning, designing, and building Mill Creek."

Mill Creek is a community of 28 newly built bungalow townhomes by Rinaldi Homes within the heart of Power Glen. Intermingled with heritage homes and custom crafted





“It’s a village in the city, a community that honours its natural and historic setting. This was at the forefront of every decision we made when planning, designing, and building Mill Creek.”

– Danielle Rinaldi

To bring the community together, Rinaldi Homes oriented the townhomes to face inward, towards a central parkette with a large gazebo. Built by **Timber Frame Solutions Inc.** with Douglas fir timbers, it’s a great gathering place for residents to meet and converse with their neighbours. “Rinaldi Homes prides itself on building beautiful communities, not just beautiful homes,” Danielle says. “That’s why so much care went into landscaping (by **Dekorte’s Landscaping**), exterior elements and a gathering place for residents.”

The townhomes are built with high quality materials to minimize homeowner maintenance and increase energy efficiency. For example, the Dashwood windows, supplied by **Crowland Sash & Frame Ltd.**, are triple glazed. This contributes to longevity and energy efficiency, and also provides an added layer of soundproofing. Tankless water heaters are also standard, cutting down on usage and providing a steady flow of hot water.

Like any new build, there were obstacles. Due to limited site space, each block of townhomes had to be built one after the other, starting at one end of the community. This allowed for excavation and backfilling to be completed in sequential fashion. Also, there were existing trees on the property. Trees can create challenges during the building and services stage, but Rinaldi Homes made every effort to preserve the natural environment. “Materials and attention to detail create character and charm, but a home should blend into the surrounding landscape,” Danielle says. “Mill Creek does just that.”

As a testament to the quality of Rinaldi Homes, Margaret Desanti and her husband were one of the first to purchase and move into their Mill Creek townhome. Margaret has worked for Rinaldi Homes for over 15 years.

Continued on page 31

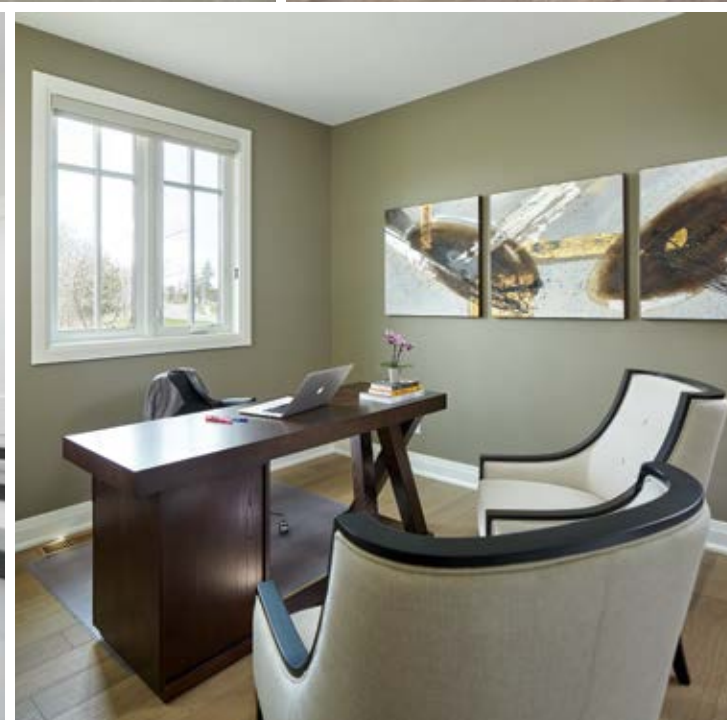
ABOVE RIGHT: Cupboards galore ensure plenty of storage space in the kitchen while a large island provides lots of room for meal prep or entertaining. **RIGHT:** A black kitchen faucet matches the cabinet hardware and looks great against the light coloured kitchen cabinets and quartz countertops. **OPPOSITE:** Generous room to manoeuvre between the stove and island ensures no one gets in the way of each other when more than one person is working in the kitchen.





The lower level in one model features a built-in bar, large windows and built-in shelving for additional storage. **BELOW:** Heated towel racks in the master bathroom are an added touch of comfort.

ABOVE: Main floor laundry rooms are a feature of the units at Mill Creek. **RIGHT:** The master bath is both functional and stylish. **FAR RIGHT:** An additional bedroom on the main floor serves as a quiet study or potential guest room.



“When it was time to downsize, there was no doubt Mill Creek was the place for us,” Margaret says. “The area is beautiful. There are a lot of trees and my husband loves to walk the many trails. Most of all, the bungalow style simplifies our lives. We were tired of stairs.”

There are several unit types to choose from, all of which inspire bungalow living with main-floor bedrooms and open-concept kitchen (**Artcraft Kitchens**), dining, and living areas. Even laundry rooms and studies are on the main level. The kitchens in all the open-concept designs were made with family gatherings in mind, centering around substantial islands and modern lighting from **Don’s Light House Ltd.** There’s plenty of custom cabinetry for storage, so everything has a place, keeping counters uncluttered. Some units also feature walk-in pantries.

Large windows and transoms in the models, adorned by **The Drapery Workroom**, allow for a ton of natural light and an unobstructed view. Flooring and backsplashes meant to withstand years of use were provided by **Aristocrat Floors of the World**. *Continued on page 32*



BELOW: The master bathroom in another model features lots of glass and contrasting tile for visual interest. **RIGHT:** The great room in another Mill Creek model. **BOTTOM RIGHT:** The master bedroom. Nightstands, lamps and bench, all from Lincoln Design House.



The master bedrooms are retreats with upgraded spa-like en suite bathrooms and walk-in closets. Upscale fixtures from **The Ensuite** were installed by **Plumbtech Services Ltd.**, including floating tubs, glass shower enclosures, double oversize sinks, and rain showers can be seen in various units. And if main floor living isn't enough, every townhome offers finished living space on the lower level. In one model, a gas fireplace from **The One Stop Fireplace Shop**, built-in cabinetry, and a wet bar to please the most discerning wine connoisseur finish the space.

Mill Creek townhomes are for buyers drawn to a flexible lifestyle that allows them to come and go as they please. One of the biggest benefits to homeowners wanting to do so is the year-round grounds maintenance. Although, considering Power Glen's historical elements and the area's sheer beauty, you might never want to leave. *Continued on page 34*



Burnstein
B R I C K
Finest in Quality Brick and Brick Ideas
176 Bunting Rd, St. Catharines
905.685.9797 | burnsteinbrick.com

BUILDING
ST. CATHARINES
SUPPLIES
176 Bunting Rd, St Catharines
905.688.2111 www.stcbs.com

CUSTOM RAILINGS, COLUMNS & COMPOSITE DECKING
HUGE SELECTION OF INTERLOCKING PAVERS & RETAINING WALLS
RESIDENTIAL & COMMERCIAL BUILDING SUPPLIES

DESIGNS BY
SANTY
CUSTOM PLANS
designsbyranty.com

A photograph of a modern house at night, illuminated by warm interior and exterior lighting.

STARK LUMBER
SINCE 1949 CO. LIMITED 1949
905.685.1311
starklumber.ca

LUMBER • PLYWOOD • ROOF TRUSSES
ENGINEERED WOOD PRODUCTS • PRESSURE TREATED LUMBER

A photograph showing stacks of various lumber and plywood products.

Add Style To Your Home!
PROFESSIONALLY CUSTOM CRAFTED WINDOW TREATMENTS
HunterDouglas
HUNTER DOUGLAS BLINDS NOW ON SALE!
With over 35 years' experience, we have the knowledge and selection to make **your style** happen.
DRAPERY WORKROOM
Est 1983
50 King Street, Welland
905-788-0711 • draperyworkroomwelland@gmail.com
FREE SHOP-AT-HOME CONVENIENCE & IN-HOME ESTIMATES

Custom
SILVER CREEK
Cabinetry
let us customize your space
silvercreekcabinets.ca
905.714.1808
Serving Niagara Region & Southern Ontario since 2005

A photograph of a modern kitchen with white cabinetry, a green mosaic backsplash, and a white countertop with a bar area.

home & builder

Mill Creek's community of 28 bungalow townhomes – built in the heart of Power Glen – was created using traditional materials, like stucco, stone and copper. OH



LOCAL SOURCE GUIDE

- All Green Irrigation • Amber Stairs & Railings Inc. • Aristocrat Floors of the World • Artcraft Kitchens • Burnstein Brick • Crowland Sash & Frame Ltd. • DeKorte's Landscaping • Don's Light House • Gibby's Electronic Supermarket • H Electric • Niagara Gold Painting • Nickerson Appliances • Night Watch Security • The One Stop Fireplace Shop • Plumbtech Services Ltd. • Rinaldi Homes • SB Haulage • Stark Lumber • St. Catharines Building Supply • The Drapery Workroom • The Ensuite • Timber Frame Solutions Inc. • Turkstra Lumber • Yarnell Overhead Door Ltd.





Brighten your home with natural light

Great for Hallways, Bathrooms, Kitchens...

- 2-hour professional installation
- No structural modifications needed

Call Today **289-407-3784**

Niagara Skylights | niagaraskylights.com

4332 Drummond Rd, Niagara Falls

Niagara Skylights is a division of One Stop Fireplace Shop



GAZEBOS :: PERGOLAS :: PORCHES :: INTERIORS :: COMMERCIAL :: TRUSSES




**TIMBER
FRAME
SOLUTIONS INC.**

Timber Frame Solutions Inc. is a full-service timber frame construction company based in Niagara-on-the-Lake, Ontario. We provide customers with the highest quality timber frame structures—including gazebos, gables, trellises, and more, using the highest quality Canadian-grown timbers, state-of-the-art design technology, and the traditional art of timber frame joinery.

905.341.5768 www.timberframesolutions.ca
1325 Line 5 Rd, Niagara-on-the-Lake ON L0S 1J0