

# BINS & TRAYS

STORY **LAUREL FORTIN**  
PHOTOGRAPHY **SANDY MACKAY**

While the crew from **Batteaux Creek Kitchens and Cabinetry** are finishing work on a wet bar in the dining room, homeowners Doug and Lesley Paul hang up their coats in the new mudroom that Batteaux Creek carved out for them at the back of their Collingwood home.

After downsizing from a house in the country outside town, the couple knew they needed more storage. Since they primarily use the back entrance to get in and out of the home, the space needed to be welcoming, organized and bright. They connected with Batteaux Creek where project manager **Tara Sly** stepped in to design their new, functional space.

« Just inside the back door, a deep, solid maple bench in white awaits handbags and groceries. Take a seat to remove footwear. Pillows soften the bench, while a wall of wire-brushed barn board grounds and warms the space. Overhead, two deep, horizontal cabinets lift up instead of out to stash items away for longer storage.

» Tucked under the white bench, a pair of deep, roll-out, soft-close drawers welcomes shoes or other items needing a quick place to tuck away. Slits cut into the drawers permit air circulation, as does the half-moon cut-outs used in lieu of hardware for drawer pulls.

*Continued on page 92*



Four handsome, solid iron hooks are at the ready for coats and sweaters.

Floor-to-ceiling shaker-style built-ins get long, brushed-nickel pulls.



mudroom tour



» A trio of large open shelves allows favourites to be at the ready. Boxes and baskets tuck gloves and other items out of sight.



« The closet opens to reveal a bar for hanging coats and jackets, while four sliding trays pull out to stash mitts, hats and accessories, and two shoe trays slide out with two rows of shoe storage. Opening each door activates a light-sensitive, wireless, rechargeable LED fixture. The fixtures can be easily removed for recharging. OH

# Craigleith Contemporary

## KNIGHTS' Home building centre

519.538.2000 | 206532  
Highway 26, East of Meaford

### 3 REASONS TO COME TO KNIGHTS'

- Tracy, who has a wealth of design experience
- Free 3D design
- With our installation program we will see your job through from start to finish.

### KitchenCraft CABINETRY

www.kitchencraft.com

# 25 ACRE MOUNTAINSIDE RETREAT

7,500 SQ' \$3,795,000

### 3 ACRE ESTATE BY THE SLOPES

\$990,000

### 97 ACRES, STUNNING VIEWS

\$1,594,000

### BOTTOM OF CRAIGLEITH

\$549,000

### MARK VEER

broker  
Direct: 705.443.7911  
markveer@remaxcollingwood.com

### RE/MAX

four seasons realty limited, BROKERAGE

### MARY RIOPELLE

sales representative  
Direct: 705.446.5466  
mriopelle@icloud.com

www.forsalecollingwood.com





# HYBRID & HANDY

Though the climate may have been harsher 100 years ago in Southern Georgian Bay, you wouldn't be able to tell by the layout of homes built at the time. Considering this home was built over 10 decades ago, when roads were muddy and farm animals nearby, its residents lacked a space where they could remove boots and coats and clean up from their farm work before entering the home.

Not any more. Enter **Jason Holman** of **jti design**. Solid, white, oak cabinets, lockers and drawers ring this pie-shaped room off the side entrance to the home. Designed by **Stephanie Redmond** when the owners of this century farmhouse put on a hybrid modern addition, Holman's team executed the mudroom.

« Heated grey tile floors run throughout the entry. The mudroom can be closed off by a large sliding metal door.



« A shallow cabinet with double doors stashes bulky items like helmets and goggles. Rows of hooks inside the door offer a convenient and discreet place to leave keys.

» Six lockers suit the family members in the home. Each locker is lined with four hooks, a wire basket for gloves and accessories on a shelf above, and space underneath to slide shoes. Additional hooks punctuate the dividers between lockers. *Continued on page 96*

Leather straps are riveted to the door for pulls.





« A single-door drying cabinet for wet gear offers six rows of tubes that circulate warm air into boots and gloves. Two layers of fireplace screening on the cabinet door panels allow air into the cupboard while disguising the contents inside.

» An armoire of three oak drawers plus open shelves with wire baskets allow the residents to quickly identify and locate accessories and items. **OH**



The solid rift-sawn oak is finished with a water-based stain to reduce any indoor air pollution. The inch-and-a-half-thick bench seats will easily withstand the next century's wear and tear.

STERLING CUSTOM KITCHENS

Bringing your ideas to life...

DESIGN BY:  
KAREN COLE, COLEDESIGN STUDIO

705 888 4854  
sterlingcustomkitchens.com

BUILDER of CUSTOM HOMES & SPACES

UPSTREAM CONSTRUCTION

www.upstreamconstructioninc.com

Building in  
Trail Woods, Thornbury  
Fall 2016.

416-271-4488



# DOORS & STRIPES



**Missy Sharp** is back on the horse, literally and figuratively. After a fall off a horse that shattered her pelvis last year, Sharp paused from her busy interior design business to recover. She's back at it with flying colours, as we see in the service entry and mudroom of this log home near the Georgian Bay Club. The homeowners enlisted **Missy Sharp Interior Design** to create the interiors of an addition to their log home that would encompass a large master bedroom suite as well as a larger secondary entrance, laundry room and mudroom.

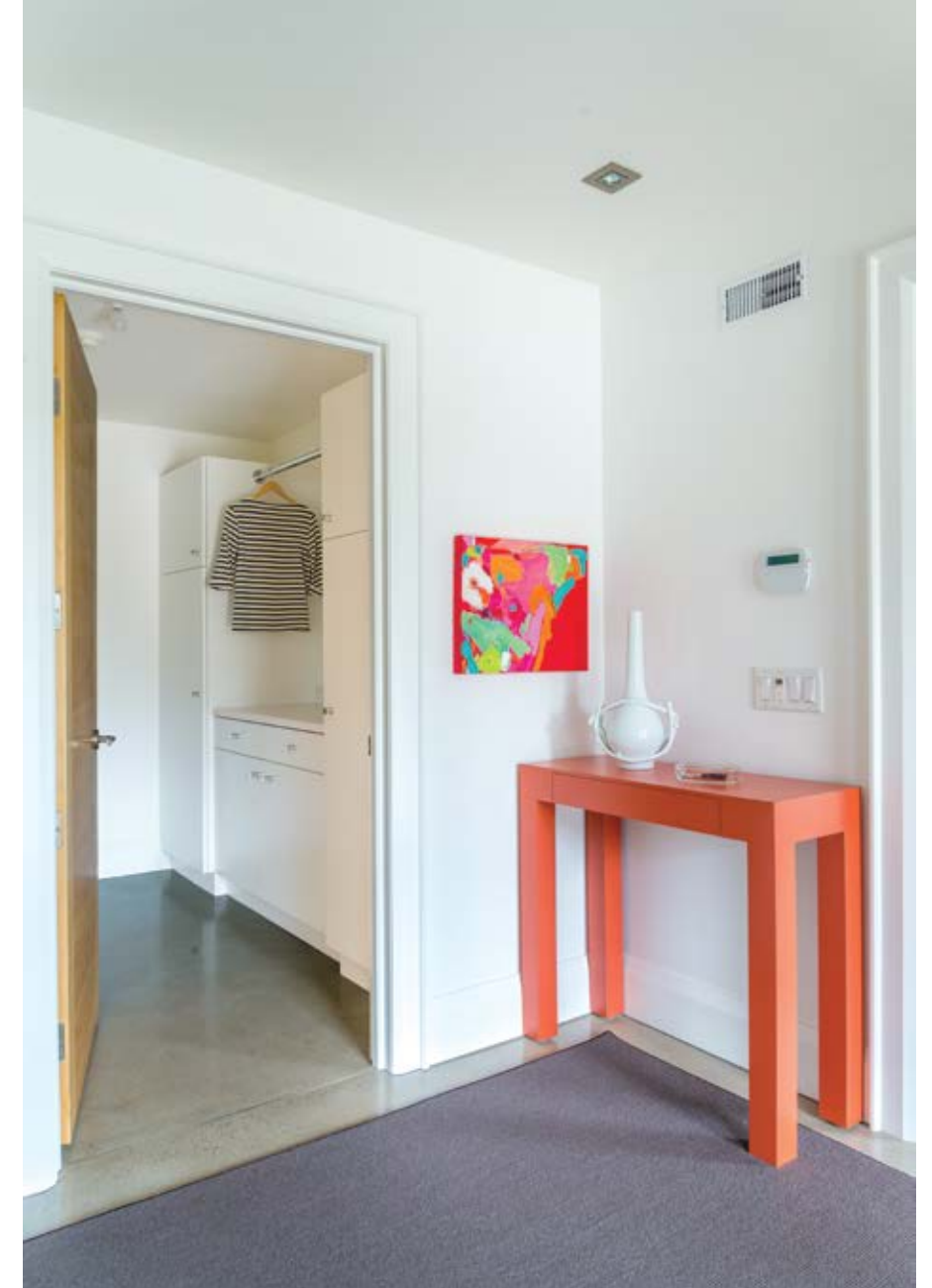
« Bright! The new secondary entry for this home opens to a long hallway of windows. A delightfully colourful custom striped rug runs the length of the hall, brightening the polished concrete heated floors. At the door a coordinating rug of a denser wool is a neutral grey. Custom, bleached, white oak benches offer seating both at the door and in the hall while taking off or putting on footwear. Paintings by local artist **Jen Wilkins** add even more gorgeous colour to the palette.

*A wall of mirrors expands the room while offering a simple wall covering and a practical place for spot checks before leaving home or after arrival.*



» A slim, orange laminate custom table designed by Sharp carries a bowl for keys inside the front entry. Through a door, the owners access the laundry room. Abstract canvas for this spot by Missy Sharp.

» Cabinets inside the laundry room connect to a pass-through from the master bedroom's large walk-in closet. Laundry and curious pets are easily transferred from one space to the other. *Continued on page 100*





mudroom tour

✧ Handsome Luca waits to head out on a walk in front of a trio of hemlock closets. Hemlock coordinates with the accent wood throughout the rest of the house and is full of personality and depth. Coats, boots, outdoor gear and sports equipment have ample space to get tucked away.



⤴ Storage cubes configure in multiple orientations to stash gear. From handbags to helmets, goggles to gloves, skates to snowshoes, everything has a place. **OH**

*This rug was custom-cut, and edges finished, to continue the pattern down the hall.*

baywood  
DESIGNS

43 Bruce Street, Thornbury  
519 599.5444  
www.baywooddesigns.com

jti design



custom cabinets & furniture  
Clarksburg, Ontario  
705.441.0036 | jason@jtidesign.ca

Clerkerson's  
Home Store

We offer our customers:  
Complimentary Regional  
Furniture Delivery & Setup!

85 Hurontario Street,  
Collingwood.  
Tel. (705) 445-1988

www.clerkersons.com

Follow Us!  
f i p

"A Collingwood  
Tradition  
Since 1977!"