

feature

# A *very fine* HOUSE

BY M. CAROLYN BLACK  
PHOTOGRAPHY BY  
SANDY MACKAY

After five moves in the last decade, owners Trisha and Tim believe they got every detail right in their new home. They've created a haven that's beachy, serene and a little bit rustic.





**TOP LEFT:** Soothing grey walls on the main floor and simple touches, like the black lantern in the entrance, add to the charm of this family home. **TOP RIGHT:** A separate entrance leads into this bright, beautifully designed mudroom. **ABOVE:** The Hamptons-style exterior is a classic look carried through to the inside of the home.

## Between

Trisha Bowman's nine years of real estate experience, husband Tim Perry's five years as a custom builder at [Perry Custom Homes](#) and five moves in the last decade, the couple figures they've finally got every detail right in this stunning south Barrie home. "My design style is definitely traditional but we also tried to go very beachy and serene with a little bit of rustic to try to make the house feel a little more lived in," says Bowman, a Realtor at [Century 21 B.J. Roth Realty Ltd.](#)

The open concept on the main floor ensures unobstructed sightlines throughout, and the soothing soft grey walls and warm white trim train the eye on the beautiful view through large windows (by [Strassburger Windows & Doors](#)) along the back of the house. With a solid treeline for privacy, a large travertine natural stone patio with hot tub, built-in barbecue and pool, the backyard is a family

oasis. A trampoline and play area for five-year-old Mackenzie, plus a space for a winter skating rink that doubles as a summer volleyball court, are tucked into the corners of the one-and-a-half acre lot.

This is the first time the family has lived in a two-storey home. "We are accustomed to bungalows but with this home, we wanted a different feel," says Perry, a professional engineer and Century 21 realtor who was also, of course, the general contractor and builder. They liked the idea of entertaining on the main floor of their 3,990 sq. ft. home and having all four bedrooms together on the second floor, along with a loft area where Mackenzie and her friends can play and be as noisy as they like while the adults enjoy relative peace and quiet downstairs. The entire design is unified by custom-stained oak floors upstairs and down by [Majestic North Floors Inc.](#); installation by [Darek Stapinski](#). Built-in units in most rooms throughout the house keep things neat and organized.

The kitchen look is classic Hamptons style – white and fresh – with soaring nine-foot cabinets, lots of moulding details and panelled fridge doors. This is the second time the couple has hired [Diane Smith of KitchenArt North](#) to design their kitchen. "I was really happy with Diane the first time so we contacted her again," Bowman says. "Diane is very good at understanding the space required for a good kitchen and she knew what would work here."

The couple particularly likes the clean lines generated by concealing the fridge and dishwasher behind white cabinetry, which visually enlarges the space. A large wall of glass, display cabinets for the couple's good dishes, is given depth with an interior coat of dark pewter paint. Bowman and Perry chose light fixtures from [Glass Lighting Gallery](#) and Restoration Hardware and selected marble countertops from Moscone and [Artistic Stone Design](#). *Continued on page 32*

**LEFT:** Tim's office is located just off the foyer. The french doors offer privacy while allowing light to shine in. **BELOW:** Holly, the couple's long-haired Australian Shepherd, has her own shower, tucked under the mudroom stairs.





**TOP:** Pristine white built-ins frame the fireplace from Napoleon Home Comfort in the great room. The coffered ceiling adds a unique architectural element to the space.  
**ABOVE:** The beautiful marble-topped island separates the kitchen from the dining room.

Smith says Bowman was easy to work with since she had kept all details of her vision for the kitchen in a binder. “Trish really did her homework prior to our first meeting and had a very clear idea of the look she wanted to achieve,” Smith says. “She made an idea book of pictures torn from magazines that she showed me and right off the bat I knew exactly which direction she wanted to go in. It just happened to be a style that I personally love too, so it made the entire design process very enjoyable.”

The exterior of the house is cedar shakes stained in Beachwood Grey with pristine white trim. Bowman says the inspiration for the exterior design and colour came from the 2010 Princess Margaret Dream Home, designed by Lynda Reeves of *Canadian House & Home*. “We loved the front elevation of that house but that design didn’t have a loft above the garage nor did the layout work for us and I felt it looked more proportioned with (the loft),” Perry says. All the interior and exterior trim work in the house was designed by Perry with interior work by **LT Woodcraft Carpentry**.

Bowman says they went through a lot of design options and mock-ups for the trim and built-in units. Perry adds, “They may cost a little extra but they are worth it for the future aggravation they save. Instead of going ahead and finishing something right through to completion and then saying ‘I don’t like that,’ build a small sample and make sure you are happy with it. We even did mock-ups with the trim on the exterior, which resulted in a lot of changes on the fly but ultimately added a lot of extra character to the home.”

*Continued on page 35*



**FAR LEFT & BELOW:** Trisha Bowman, Tim Perry and Holly gather in their gorgeous all-white kitchen by KitchenArt North.  
**LEFT:** A rustic, dining room table from Restoration Hardware seats 14.

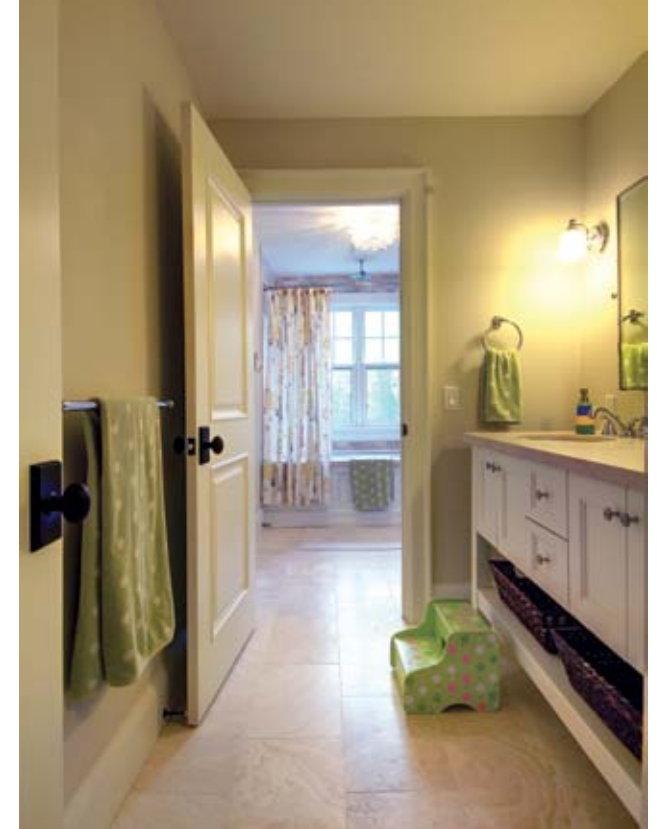






The couple figured Holly, their two-year old long-haired Australian Shepherd, would track in a lot of the mud that comes with a freshly graded un-sodded lot so they installed a tiny shower under the mudroom stairs. “That’s the one thing that every trade that walked through this house commented about,” laughs Perry. “I really didn’t think (the shower) was going to get used but I was completely wrong.” Aside from rinsing muddy paws, the shower is perfect for cleaning recycling bins or beverage coolers. All plumbing fixtures in the house from [Yorkwest Plumbing Inc.](#) were installed by [Roger’s Plumbing](#).

The family is looking forward to celebrating Christmas in their new home, with all of Bowman’s extended family coming for games and dinner around the massive 14-foot dining table made from salvaged wood. They’re also planning a traditional Christmas Eve viewing of *The Polar Express* in the lower level theatre room. *Continued on page 36*



**ABOVE:** The master bedroom upstairs has a walk-out to a balcony overlooking the pool and backyard below. **RIGHT:** The master en suite has a vessel tub, separate shower and a dark vanity with a double sink and clever storage.



Mackenzie’s bedroom is a little girl’s dream. She has a little cubby to play in and a big comfy chair to read in with her Mom and Dad. **ABOVE:** Mackenzie’s bathroom has a separate room with a tub and shower.




feature


**RIGHT:** The laundry room is upstairs at the end of the hall, near the stairs that take you down to the mudroom. **BELOW:** The gym is in the finished basement, where a ping pong table and a theatre room attract family and friends. **BOTTOM:** The bar downstairs is a natural gathering space when family arrives for the holidays.



A resounding seal of approval on the house was already given by the youngest family member before they moved in. Perry says their daughter Mackenzie noticed the play cubby area framing in her bedroom even before the roof was on the house. “My favourite thing about this house is how much my daughter loves it,” he says. “It truly makes everything worthwhile.” **OH**








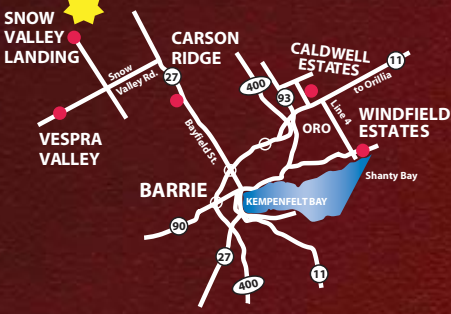
DENDOR  
FINE HOMES

*Discover the Difference*



*Presenting...*  
***“The Devonshire”***

For more information please visit our sales office  
at 109 Budds Mill Rd in Snow Valley Landing  
Sat/Sun 1-4pm or by appointment.



Custom built homes on  
**Large Premium Estate Lots**

[www.dendorfinehomes.com](http://www.dendorfinehomes.com)

Customize our plans, design your own or bring your drawings.

**705.792.9366**

# BTM BARRIE TRIM & MOULDINGS INC.

SPECIALIZING IN CUSTOM TRIM, DOORS & STAIRS SINCE 1985 | SUPPLY & INSTALL



Looking to add value to your home? Come in and see the experts at Barrie Trim. Let us help you increase the WOW factor of your home with updated trim/doors/stairs/railings.

Mon to Fri 7-5pm Sat 9-3pm ■ 52 Saunders Rd, Barrie  
705.739.2200 ■ 1.800.265.3465 ■ [www.barrietrिम.com](http://www.barrietrिम.com)