

HOLIDAY/WINTER 2016/17

STYLE ■ COMFORT ■ IDEAS ■ REAL ESTATE

ourhomes

G R E Y & B R U C E C O U N T I E S

10th

ANNIVERSARY
ISSUE

Country
CONTEMPORARY

LAKE
ROSALIND
Living

HOLIDAY HOME



HOMEMADE
MARSHMALLOWS



SUBARU

Confidence in Motion

2017 OUTBACK

WELL-EQUIPPED FROM
\$31,297*

WITH SUBARU YOU DON'T HAVE TO STAY AT HOME THIS WINTER.



Very little stands in your way in the capable 2017 Outback. Subaru symmetrical Full-Time All-Wheel Drive ensures an outstanding grip in snow, rain or rough road, and now, thanks to X-MODE® with Hill Descent Control, it's even better at handling steep and harsh terrain. To learn more visit ontario.subarudealer.ca

2016 IIHS TOP SAFETY PICK+[†]
MODELS EQUIPPED WITH EYESIGHT®



EyeSight®
Driver Assist Technology

SYMMETRICAL
AWD

*MSRP of \$29,295 on 2017 Outback 4-cyl 2.5i Base CVT (HD225). Advertised pricing consists of MSRP plus charges for Freight/PDI (\$1,675), Air Conditioning Charge (\$100), Tire Stewardship Levy (\$17.75), OMVIC Fee (\$10), Dealer Admin (\$199). Freight/PDI charge includes a full tank of gas. Taxes, license, registration and insurance are extra. \$0 security deposit. Model shown: 2017 Outback 4 cyl 2.5i Premier w/ Tech Pkg AT (HD2PPE) with an MSRP of \$38,595. Dealers may sell or lease for less or may have to order or trade. Vehicle shown solely for purposes of illustration, and may not be equipped exactly as shown. See your local Subaru dealer for complete program details. **See Owner's Manual for complete details on system operation and limitations. Outback and Subaru are registered trademarks. †Ratings are awarded by the Insurance Institute for Highway Safety (IIHS). Please visit www.iihs.org for testing methods.



HUTTEN.CA 519.376.9364

CRAFTED WITH CHARACTER



Naturally yours
HUTTEN.CA | 519 376 9364

Hutten & Co
LAND and SHORE



*Natural Stone,
Natural Beauty*



 OWEN SOUND
LEDGEROCK

519-376-0366 866-877-5704

www.ledgerock.com



YOUR DREAM PROPERTY REALIZED.



John@RockSolidLandscapes.ca

519.379.1772



ROCKSOLIDLANDSCAPES.CA



Complete
design & build
landscape construction.

landscapeontario.com
Green for Life!



DETAILS THAT
GET NOTICED



Exquisite
Wood Design Inc.

Your custom Kitchen specialist!

519.370.0808 1980 20th St. East, Owen Sound ewdesigns.ca



SOUTH-PORT

MECHANICAL GEOTHERMAL



Mechanical



Geothermal



Plumbing



Valor
THE ORIGINAL
RADIANT GAS FIREPLACE



519-389-COOL (2665) • 519-389-HEAT (4328) • 4475 Hwy. 21, Port Elgin

south-portmechanical.com



New Phase. New Plans.

Same Walker Quality

Walker Homes is excited to announce the newest phase of Summerside in Port Elgin, featuring new plans and new elevations. We strive to provide each and every customer a home with exceptional quality and finishes. We invite you to come visit our model home to see why your next home, should be a Walker Built home.

“We would never build a house that we would not live in ourselves.”
- Ryan & Brooke Walker



**New Fully Furnished
Model Home Located at:**
850 Sumpton St., Port Elgin
Friday, Saturday and Sunday 1-5PM

For more information
contact us today:
summerside@walkerbuilthomes.ca or
call 519-706-0672 or 519-378-4558

Preview our plans online at
walkerbuilthomes.ca

Solar Pays!

INVEST IN THE SUN
Make money or
save money!



A solid environmental & economic investment.



Put some sunshine in your bank account!

Receive a payment every month from your electricity provider and/or reduce your hydro bill to a small fee via net metering. Contact Blackline Power today to evaluate your solar options. We are the local experts.

 **Blackline Power**
RENEWABLE ENERGY SPECIALISTS
519.371.8945
www.blacklinepower.com



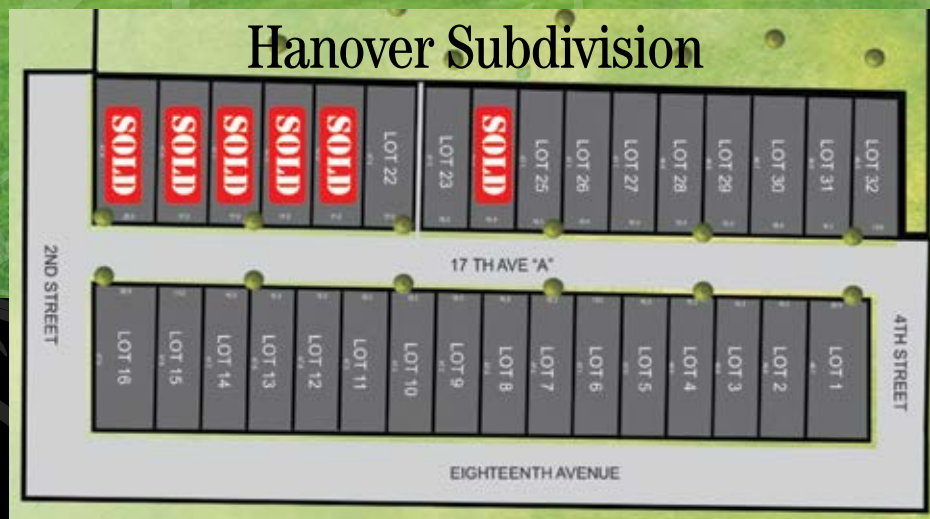
ROOF & GROUND SYSTEMS. MICROFIT/FIT & NET METERING. RESIDENTIAL & COMMERCIAL.

*A smooth build
from start to finish.*



Book your Dream Home in Hanover!

Hanover Subdivision



Summer 2017 - 13 Building Lots in Durham



**CANDUE
HOMES**

519-369-5051

homes@canduehomes.com www.canduehomes.com



Don Susan



NEW FINGERPRINT RESISTANT STAINLESS STEEL

Now Maytag® power is wrapped in the
dependable defense of new
fingerprint resistant stainless steel



MF2676FRZ

Maytag® 26 cu. ft. 4 Door, French Door Refrigerator

Fingerprint Resistant Stainless Steel
Keeps your refrigerator looking as good
on the outside as it works on the inside

**Adjustable-Temperature
Refrigerated Drawer**
Gives you a new storage option for keeping
whatever you want right where you want it



See in-store sales associate for details.†



MGR8800FZ

Maytag 5.8 cu. ft. Gas Range

Fingerprint Resistant Stainless Steel
Keeps your range looking as good
on the outside as it works on the inside

Power™ Burner
The Power™ Burner allows for a slow, even saute and
the intense heat for a seared, juicy steak.



††Visit maytag.ca for warranty details. ®/™ © 2016 Maytag. Used under license in Canada. All rights reserved.



MDB8959SFZ

Our Quietest Dishwasher Ever at 47 dBA†

Fingerprint Resistant Stainless Steel
Keeps your dishwasher looking as good
on the outside as it works on the inside

Most Powerful Motor on the Market ♦
To handle your toughest stuck on foods

† Per I.E.C. standard.
♦ Among leading brands.



FAMILY OWNED AND OPERATED

SQUARE DEAL NEIL'S

TV AND APPLIANCES

SALES & SERVICE • NEW & USED

Hwy 21, Southampton 519-797-3905 sinclairtv@bmts.com www.squaredealneils.ca

Large enough to serve you, small enough to care!

Serving our
area for over
60
Years



NEW! Environmentally safe dry ice blasting
for removing old coatings from interior and exterior wood.

Log home maintenance | Deck refinishing
Brick cleaning and sealing | Interior and exterior painting
Hot water and steam cleaning for dirt and mildew
Removing efflorescence from brick and masonry



104 Shane St., Unit 2B
Springmount Industrial Park
Owen Sound
Call for Free Estimates
519-372-1221
www.customsoda.ca
ecostore@customsoda.ca

STYLE • COMFORT • IDEAS • REAL ESTATE
ourhomes®
GREY & BRUCE COUNTIES

REGIONAL PUBLISHER OUR HOMES Media Group Inc.
Jamie Jefferson
Georgette McCulloch
REGIONAL MANAGING EDITOR Jennifer Schleich
REGIONAL PRODUCTION MANAGER Kelly Donaldson
MARKETING & ADVERTISING Betty Ann Fawcett, 519.372.6338
bettyann.fawcett@ourhomes.ca
DISTRIBUTION Allan Fawcett, 519.986.2599

REACH US EASILY: firstname.lastname@ourhomes.ca

OUR HOMES is a registered trademark of OUR HOMES MEDIA GROUP INC.
OUR HOMES Grey & Bruce Counties is published four times a year.
OUR HOMES is distributed to residents of Grey & Bruce Counties and to cottagers
via direct mail. Copies of OUR HOMES are available for free pick up at high traffic
locations throughout the region. Copies of OUR HOMES are also sent via direct mail to
members of select ski clubs in the region. OUR HOMES is distributed throughout select
B&Bs and hotels, and to select business leaders via direct mail.
OUR HOMES Media Group Inc. is a proud member of the
Owen Sound and District Chamber of Commerce.
Please send all letters and/or feedback to OUR HOMES Magazine, 25 Elgin St.,
Collingwood, Ontario, Canada L9Y 3L6. Or email us at editor@ourhomes.ca.
All letters received are subject to editing for grammar and length.

OUR HOMES MEDIA GROUP INC:

EDITORIAL	PRODUCTION MANAGERS
EDITOR-IN-CHIEF Georgette McCulloch	Julia Dempsey, Kelly Donaldson, Marilyn Reid, Abby Reynolds, Tracy Shuttleworth
ASSOCIATE & WEB EDITOR Laurel Fortin	
MANAGING EDITORS Nancy Belgue, Adrienne Brown, Laurel Fortin, Walter Franczyk, Mary Hatt, Gina Makkar, Tiffany Mayer, Georgette McCulloch, Melissa North, Diane Sawchuk, Jennifer Schleich	OPERATIONS
ART	MANAGING DIRECTOR, SALES & MARKETING
ART DIRECTOR Tara Chattell	Jamie Jefferson jamie.jefferson@ourhomes.ca
ASSOCIATE ART DIRECTORS Sheila Britton, Robynne Sangiuliano	MANAGING DIRECTOR, OPERATIONS Georgette McCulloch
DIRECTOR OF PHOTOGRAPHY Jason Hartog	DIRECTOR OF BUSINESS DEVELOPMENT Christine Puma christine.puma@ourhomes.ca
PRODUCTION	NATIONAL SALES DIRECTOR Amanda Newell amanda.newell@ourhomes.ca
PRODUCTION DIRECTOR Lynn Derrick	ACCOUNTING Donna Duggan ADMINISTRATOR Lisa Merrell

CONTRIBUTORS

Leigh-Ann Allaire Perrault, Brandon Barre, Sheila Britton, Pat Crocker,
Jason Hartog, Gillian Jackson, Sandy MacKay, Emil Makkar, Gina Makkar,
Kim Masin, Jenelle McCulloch, Dolores Pian, Jennifer Schleich, Mehreen Shahid,
Yanic Simard, Sarah Sloan, Steve Small

Advertisements and the content, including photos, of advertisements published within
OUR HOMES magazine are supplied solely by the advertiser and neither the publisher nor
OUR HOMES Media Group Inc. accept responsibility for opinions expressed in advertisements or for
copyright issues with regards to photos, advertising copy and advertisements, nor shall they be held
liable thereby. By act of reading this publication, all advertisers and readers agree to indemnify and
hold harmless both OUR HOMES Media Group Inc., and the publisher thereby. Copyright ©2016
OUR HOMES Media Group Inc. All rights reserved. Reproduction without permission is prohibited.

OUR HOMES CAN BE FOUND IN THE FOLLOWING MARKETS:

Barrie • Grey Bruce • Hamilton • London • Muskoka
• Niagara • Oakville/Burlington/Mississauga • Ottawa
• Peterborough • Southern Georgian Bay • Region of Waterloo
• Wellington County/Orangeville/Caledon • Windsor • York Region

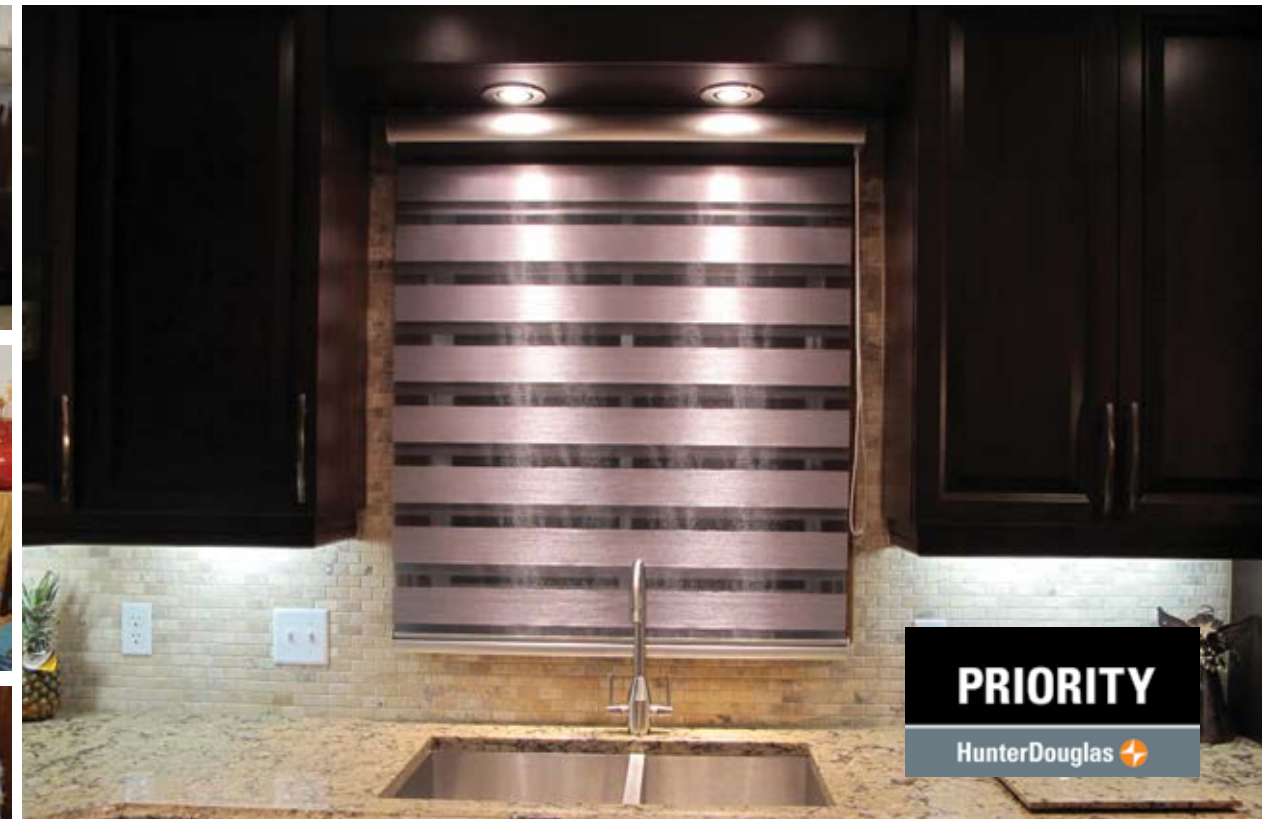


Smitty's FINE FURNITURE

Unparalleled quality and service - one family at a time.

Serta

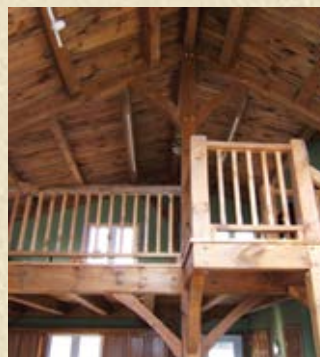
Family Owned Since 1949 smittysfurniture.com | 170 Gateway Park Drive, Kitchener | 170 3rd Street, Hanover



Inside Ideas

829 2nd Ave. E., Owen Sound
519-371-6926
www.insideideas.ca

BUY DIRECT FROM THE SAWMILL!



- BUYER OF STANDING TIMBER
- ALL DECKING MATERIALS
- BOARD & BATTEN ■ POST & BEAM
- WHITE PINE FLOORING ■ T&G SIDING

High Quality: White Pine, Red Pine, Cedar, Hemlock
1" Boards - 2" Dimension; 4" and 6" Squares



CALL FOR QUOTE
MOGGIE VALLEY TIMBER INC.

684063 Sideroad 30, Holland Centre, ON

519-794-0018

moggievalley@gmail.com

Mon - Thurs - 7:30am to 5:30pm
Friday - 7:30am to 12:30pm

editor's note



ISN'T IT STRANGE HOW 10 YEARS CAN ROLL BY?

When you picked up this anniversary issue of OUR HOMES Grey & Bruce Counties and began flipping through it, did you stop to consider that it has been 10 years since you first saw it piled on the counter of your favourite store?

What has life been like for you over the past decade? What changes have you made to your

home – perhaps you bought or built a new one – and how has your personal style evolved during that time? We hope that we've been there to help with your many home projects, because we know how tricky it can be to navigate the waters of interior design.

I will never forget the first time I picked up a copy, shortly after I moved to Bruce County. In the middle of the issue was a feature on a Grey County home's intriguing landscaping, complete with its own tree house – maybe you also remember it. I never forgot that unique home. It was perhaps the first time I had ever been struck with awe by a magazine feature on home design and for many years since I have relished the dream of crafting a country garden retreat.

When I first started working with OUR HOMES I had no idea that hidden inside me was an affinity and an aptitude for home décor. You could say that this magazine has helped my sense of style blossom from a tiny seed, and I imagine that many of our readers can say much the same. As OUR HOMES embarks on the next decade and the adventures that await, I am about to do the same with my career. My time as managing editor of Grey & Bruce Counties has come to a close, though I will always remain, like you, an avid reader.

OUR HOMES has always striven to bring you the most interesting homes and design that can be discovered in our region. Though Grey Bruce is a huge territory, reaching from the tip of the Bruce Peninsula to the scenic valleys and hills of Grey Highlands, to the plains of Southern Bruce, everyone who lives here and reads this magazine is united by our appreciation of design. I hope the past 10 years have been as great for you as they have been for OUR HOMES. And here's to the next decade, may it be better than the last!

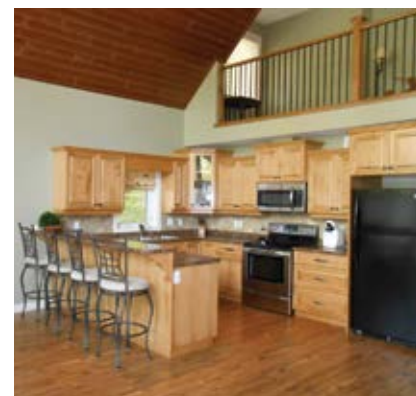
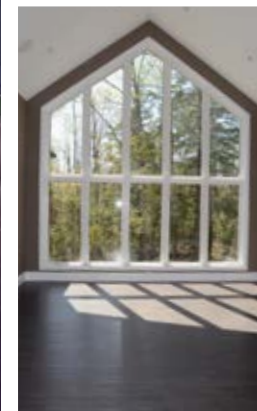
Jennifer Schleich

Jennifer Schleich, Managing Editor
jenn.schleich@ourhomes.ca

Follow us @OurHomesMag

online Get more at ourhomes.ca

Builders of Quality Homes & Exceptional Communities



SNYDER
DEVELOPMENT

CUSTOM BUILT HOMES

1235 Wellington St, Port Elgin

519.389.2045

www.snyderdevelopment.com

CONTENTS

HOLIDAY/WINTER 2016/17



ON THE COVER

Modern living inspires a new build in Dundalk. Story, page 54.
Photography by Sandy MacKay.

48



22

LOCAL FEATURES

- 22 Style Picks** Start your holiday shopping early with these festive décor pieces.
- 28 Feature Home** The halls are decked for charity on the Holiday Tour of Homes.
- 48 Spotlight** Smitty's Fine Furniture shares some of their latest furniture finds.
- 54 Home & Builder** Step inside a Grey County black and white contemporary farmhouse.
- 64 People** Local businesses celebrate 10 years with OUR HOMES by sharing their recollections.
- 74 Home & Builder** A cottage undergoes a transformation into a full-time home on the Lake Rosalind shoreline.

DEPARTMENTS

- 14 Editor's Note**
- 18 Publisher's Note**
- 20 Advice** Crazy For Chandeliers
- 26 Double Take** Play With Texture
- 38 Projects** DIY Plank Trees
- 40 Decorating** Holiday Decorating
- 46 Cooking At Home** Almond Cake
- 52 Real Estate** Newbies & Retirees
- 82 Design Ideas** Inspiring Bathroom Ideas
- 86 Good Taste** Marshmallow Hot Chocolate
- 88 In The Kitchen** Which Whisk Is Which
- 94 Home Resource Directory**
- 96 Crafty Ideas** DIY Mercury Glass
- 98 Finishing Touch** Mathematical Décor

& quality workmanship
customer satisfaction



THE OLD BARN

POLISHED STONE CREATIONS

Your local source for Granite, Marble & Quartz Countertops



12 years
of business excellence!

173480 Mulock Road (between Durham & Hanover) 519.369.1710 theoldbarngranite.ca



Products to Preserve & Protect Your Log Home



**LOG HOME STAINS & FINISHES
CHINKING TOOLS & BACKER
LOG CAULKING
PRESERVATIVES
RESTORATION
MASONRY**

***Canada's Only
Weatherall Distributor***

– FREE DELIVERY –

**Call today! 519-372-1221
ecostore@customsoda.ca**

publisher's note



WHAT'S YOUR FAVOURITE ROOM AT HOME? It's a question we often ask while visiting the houses featured in OUR HOMES. Some folks have one particular room while others have several, depending on the

season of course. Regardless of the room, the answer to the question "why is it your favourite?" is nearly always the same: "It's a place to escape the busy-ness of life."

Our favourite room is the family room. I sit in the far corner of the sectional sofa. It's close to the fireplace and right in front of a big window with a view outside. It's also near the kitchen and my favourite lamp sits on an end table, so it's a great spot for reading. Jamie's spot is across from me. There's lots of room on the sofa for the rest of our family to join, including our dog Max. When we purchased the new sofa, we vowed that Max would NEVER be allowed up on it. Well, that lasted about a month. We just couldn't resist those big brown eyes.

For 10 years, OUR HOMES has been invited into wonderful homes across Grey and Bruce Counties. We've travelled far and wide to visit retailers and meet talented people who work hard every day to help all of us create homes that accommodate our desire to escape the busy-ness of life. So thank you for sharing what you do with OUR HOMES and our loyal readers.

We would not be marking this 10-year milestone if it weren't for Betty Ann Fawcett, our intrepid sales representative who has been with OUR HOMES since the very beginning. Betty Ann has worked tirelessly over the years to build our brand across the region.

We'd also like to thank Managing Editor Jennifer Schleich, Production Manager Kelly Donaldson, photographers Sandy MacKay, Steve Small and Bonnie Fox and our entire team for bringing this anniversary issue to life.

Get cosy in your favourite spot in your favourite room and enjoy our 10th Anniversary issue.

Happy Holidays,

Georgette McCulloch
Editor-In-Chief
georgette.mcculloch@ourhomes.ca

Jamie Jefferson
Publisher and Managing Director
jamie.jefferson@ourhomes.ca



CHRISTIE'S
INTERNATIONAL REAL ESTATE

The warmth and comfort of home.



www.chestnutpark.com

CHESTNUT PARK REAL ESTATE LIMITED, BROKERAGE

Owen Sound | 957 4th Avenue East, Suite 200 N4K 2N9 | 519.371.5455 | owensound@chestnutpark.com

Warton | 551 Berford Street NOH 2T0 | 519.534.5757 | chestnutparkwarton@garytaylor.ca

Collingwood | 393 First Street Suite 100 L9Y 1B3 | 705.445.5454 | collingwood@chestnutpark.com

TORONTO
LAKE OF BAYS/
HUNTSVILLE/ALMAGUIN

MUSKOKA
HALIBURTON/
KAWARTHA LAKES

WIARTON
COLLINGWOOD/
SOUTHERN GEORGIAN BAY

OWEN SOUND
PRINCE EDWARD
COUNTY

ERIN/CALEDON/MONO
NORTHUMBERLAND
COUNTY

The Rusty Star

Solid Wood Mennonite Furniture & Country Home Décor



LOCATED AT GREY RD. 4 MAXWELL

www.therustystar.ca | (519)-922-2010 | therustystar@live.com

Hours: Mon – Fri: 9:00 AM – 5:30 PM
Sat: 9:00 AM – 5:00 PM (Closed Sundays)

advice

Interior Designer **Dolores Pian** shares her ideas.



LET THERE BE LIGHT

It's been a long time since the first statement lighting fixture in the universe was created with a bang.

Back here on earth and in our homes, we mortals have been trying to replicate the same wow factor ever since.

Entranceways, bedrooms, kitchens and even bathrooms can use lights that make a statement. More often than not, we love to use chandeliers for this purpose. They are grand. They command attention. And, most definitely, they are striking.

Traditionally, chandeliers with tiny lights were gathered up into one large fixture and were central to the décor of a room, in most cases the dining room. Distinguished homes had Schonbek chandeliers with Swarovski crystals. We would also see fanciful, sweeping shapes of colourful glass from Murano and Venice, Italy – much like a grand dame in her wonderful gown attending La Scala Opera.

Over the past 10 years, traditional chandeliers have become objects of desire once again, evoking an era of glamour and style. Sleekly styled teardrops, without the faceted cuts, are the updated version of crystals, creating modern styling in a traditional fixture, such as the Crawford by Hudson Valley Lighting.

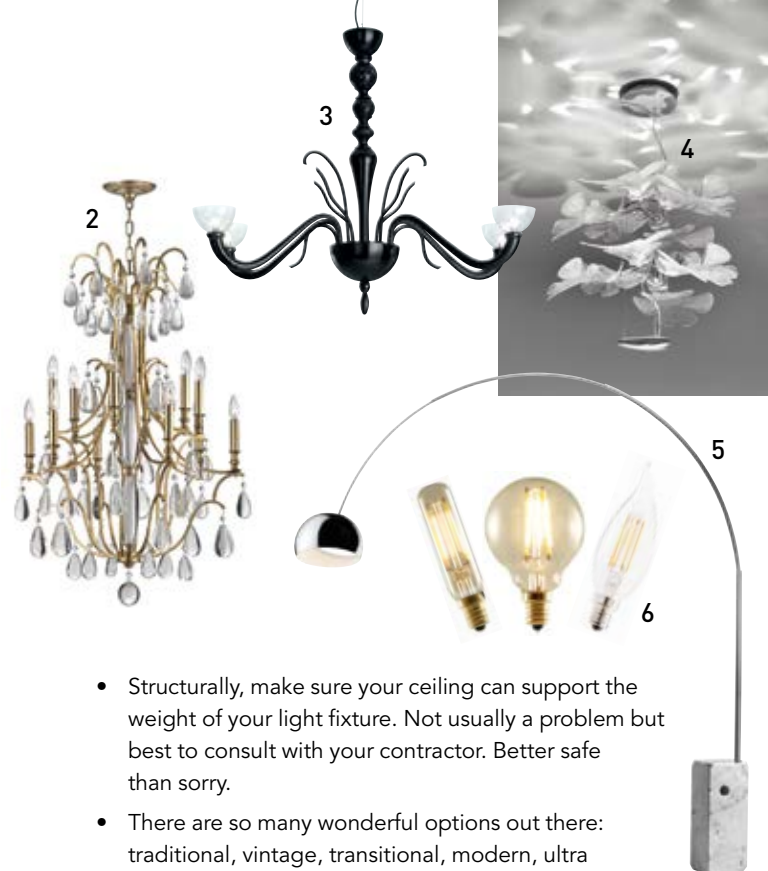
Today, lighting statements come in twos, threes or in clusters. Some are floating sculptures. Modern technology allows us to be more creative with different shapes and materials.

Artemide, one of the world's most progressive and grooviest lighting manufacturers, from Italy, regularly creates fantastical pieces that provide a lifetime of beauty and joy. One of their latest pieces, Chlorophilia, designed by Ross Lovegrove, cleverly up-lights a series of petals that act as prisms, producing light and shadows with the help of LEDs, creating a delicate, space-expanding effect.

Sometimes a statement chandelier is not a chandelier at all, but a large lamp that arcs overhead, such as the Arco, by Italian manufacturer Flos. It is considered an ageless classic suitable for any décor or function.

Light It Up

- Think of your chandelier as a stunning investment in visually-beautiful eye candy that will make an impression both by night and by day.
- In open-plan spaces, while your chandelier is the focus, it's good to mix sizes and type of fixtures that are flexible to your needs. The other fixtures don't have to match, but they do need to coordinate.



- Structurally, make sure your ceiling can support the weight of your light fixture. Not usually a problem but best to consult with your contractor. Better safe than sorry.
- There are so many wonderful options out there: traditional, vintage, transitional, modern, ultra modern, suspended, ceiling-hugger, colourful, clear, metal, glass, wood. No matter your tastes there's something to suit your personality and style.

Turn it On

- Buy quality bulbs with a colour temperature of 2700 K to 3000 K. The lower the number the warmer and cosier the atmosphere. Different lighting and colour temperatures will bring out different shades in your wall colours, fabrics and carpets.
- Dimmers set the mood and provide as much light as required when needed. Dimmers can also be calibrated to preset light settings to provide the atmosphere and the timing of your choice.
- Incandescent filament bulbs are still the best for that warm fiery glow. They are the softest and most flattering bulbs available.
- Halogens are crisp and warm and make objects look sensuous and rounder.
- Fluorescents make objects and colours look flat, despite the colour temperature.
- LED lights are efficient and can be warm providing that you choose a warm colour temperature. Beware of pointy hot spots – make sure that you have a diffuser to soften the light source.
- If you're feeling nostalgic and you want to see a clear bulb, Bulbrite produces bulbs that replicate the exposed filaments of clear bulbs through LED technology.

Although lighting's primary function is to see and be seen, it's important to think of your empty ceilings and walls like a canvas to create your personal statement. Now all you have to ask yourself is: How will I light up my universe and make my statement? **OH**

1. SWAROVSKI LIGHTING: Valterri Chandelier 2. HUDSON VALLEY LIGHTING: Crawford Chandelier 3. VESOLI: Infedele Suspension Light 4. ARTEMIDE: Chlorophilia 5. FLOS: Arco Floor Lamp 6. BULBRITE: LED Filament Bulbs

CR Designs

INTERIOR DESIGNS



crinteriordesigns.com
519-797-3821





Winter WONDERLAND

We've fallen in love with these wintry picks from some dedicated OUR HOMES partners.

PHOTOGRAPHY **STEVE SMALL**

1 HANOVER HOME HARDWARE BUILDING CENTRE

Deer Mount

Add a rustic flavour to your holiday décor with a festive deer head in silver, white or brown. This decorative deer mount is made from a polyresin and comes with hardware installed for easy attachment to any wall.

580 24th Ave., Hanover
519.364.3410 | homehardware.ca

2 INSIDE IDEAS

Cowhide

Add to your home's décor with a beautiful cowhide area rug or couch throw. Sizes range from approximately four-by-six-feet to eight-by-12-feet and no two are exactly the same. Also on offer are Mongolian sheep and rabbit furs.

829 2nd Ave E., Owen Sound
519.371.6926 | insideideas.ca

3 GREY BRUCE PAINT & DÉCOR

Table Lamp

Made of concrete, this table lamp is edgy and trendsetting with a functional and minimalist look, featuring neutral colouring. It sits 20-inches high and would suit an accent table or bedside stand for night-time illumination.

1580 20th St. E., Owen Sound
519.371.4207 | benjaminmoore.ca

4 THE RUSTY STAR

Enamel Pot

The hand-worn look of this tall enamel pot lends a vintage feel to tea time, but would also make a great vessel to serve up homemade hot chocolate. Also available are a variety of coffee mugs and different sized tea cups in coral, white, yellow, red, black, blue and mint.

408065 Grey County Rd 4., Maxwell
519.922.2010 | therustystar.ca

5 BRUCE COUNTY CUSTOM CABINETS

Cabinet Doors

A variety of cabinet front materials and colours are available for customization at this local design studio, including thermal-wrap, wood, MDF and painted cabinetry options. Pictured here: a rustic wood-look thermal-wrap door, a contemporary wave pattern thermal wrap door and a painted shaker door.

1211 MacKenzie Rd., Port Elgin
519.483.1188 | brucecountycustomcabinets.ca

6 BAREBIRCH

Wool Throw

A fuzzy 100 per cent wool throw is the best way to stay cosy in cool winter weather. These blankets are made in Scotland, come in two sizes with toss cushions to match and are available in more than a dozen colour combinations.

975 2nd Ave E., Owen Sound
226.664.2273 | barebirch.ca

Continued on page 24

style picks



7 CUNEO INTERIORS CARPET ONE FLOOR & HOME

Vinyl Planks

Vinyl flooring has come a long way over the years. These luxury vinyl floor tiles click into place and create an attractive waterproof, super durable and multifunctional wood plank floor look that can handle all the snow your boots can throw its way. Pictured are the Aspen, Heartland and Eden Hickory styles.

873 10th St., Hanover
519.364.1303 | cuneointeriors.com

8 COUNTRY CHARM MENNONITE FURNITURE

Dining Chair

This solid wood chair is a piece of fine craftsmanship. Featuring a walnut frame and a wormy maple seat, it is sure to spark conversation at your holiday feasts. Can be customized in a variety of woods, and matching tables are available.

317680 Hwy 6 & 10, Rockford
519.376.4434 | ccharm.com

9 THE FYRE PLACE & PATIO SHOP

Gas Stove

Replicate the traditional and rustic look of wood heat with a gas stove. This stove, which features modern styling, can heat an 800 to 1,000 sq. ft. open-concept space. It is also available in a powder white finish, with logs, stones or glass medium inside.

Corner of Hwy 6 & 21, Springmount
519.371.2963 | thefyreplace.com OH

KOUNTRY KAT

UNIQUE SOLID WOOD CREATIONS
Chain saw art and vintage accents

157 Garafraxa St. S. Durham
226.432.3005

Surroundings

Custom Framing & Home Accents

- Specializing in Quality Custom Framing of Prints, Photographs, Oils, Watercolours and all types of Needlework
- Drymounting & Laminating of Photos and Prints
- Unique Giftware & Home Accents
- Canadian and locally made products such as pottery, preserves, hand and body products, hand-blown glass and more!

Surround Yourself with Style

58 Elora Street, Mildmay
519-367-2636
surroundings@wightman.ca
www.surroundingsmildmay.ca

We bring custom window coverings to you!

We carry the hottest styles and colours to fit your décor.

Budget Blinds

a style for every point of view®

shutters | draperies | wood blinds | cellular shades
woven woods | roman shades | window film...and more

"Expert Fit"

Measuring & Installation Free In-Home Consultation
519-793-3921 www.budgetblinds.ca



bare birch
casual, cozy, boutique interiors

975 2nd avenue east, owen sound
226-664-2273 | www.barebirch.ca

double take

TEXTURAL healing

Recreate this look
in your own home.



PHOTO: SANDY MACKAY

- 1. **ARTERIORS:** Sabine Floor Lamp
- 2. **VANGUARD FURNITURE:** Ava Side Table
- 3. **RENWIL:** Stardust Table Lamp
- 4. **ZODAX:** Kyoto Glass Hurricane
- 5. **CYAN DESIGN:** Hopscotch Filler Ball
- 6. **ZODAX:** Equestrian Leather, Glass and Brass Hurricane
- 7. **CYAN DESIGN:** Mirage Tray
- 8. **SAFAVIEH:** Antwan Gold Coffee Table
- 9. **COLE & SON:** Folie Parterre Wallpaper in Charcoal
- 10. **VANGUARD FURNITURE:** Whitaker Sofa
- 11. **NOURISON:** Prairie Area Rug in Silver
- 12. **WILLIAMS-SONOMA HOME:** Woven Leather Hide Pillow Cover in Tan **OH**



Control your
powered shades with
your smartphone
...it's more affordable
than you might expect.

Our window fashion experts will
guide you through the many
motorization and control options,
whether it's one window or your
entire home.

Powered options
starting at \$119⁰⁰

MAXMAR
WINDOW FASHIONS

Cuneo Interiors

Decorating Excellence Since 1948

873 10th St., Hanover, ON 519-364-1303 | 207 Durham St., Walkerton, ON 519-881-2170

www.cuneointeriors.com

800-265-1172



Beautiful. Made Affordable.



HOPE FOR THE *Holidays*

STORY **JENNIFER SCHLEICH**
PHOTOGRAPHY **SANDY MACKAY**



The snow wasn't yet falling, but the days were growing short, the nights frosty and the Ceaser house on the outskirts of Owen Sound was already bedecked for Christmas on a cool weekend last November. Thanks to a little holiday magic courtesy of home décor boutique **barebirch**, Brian and Tedra Ceaser were ready to open their front door to the troves of Christmas curious pouring in from across the region. *Continued on page 30*



ABOVE: The table décor is set for a Christmas party, and comes complete with tree branch candle holders, stonewashed linens, and burlap bows. **OPPOSITE, TOP LEFT:** Lots of greenery enlivens the front door of the Ceaser house for the Holiday Tour of Homes. **TOP RIGHT:** A set of vintage look skis and a reindeer toss cushion lend a sense of winter wonder to the foyer. **BOTTOM:** Jacqueline Furtner of Barebirch with homeowner Tedra Ceaser and tour organizer Rob Dinsmore.



Small glass balls filled with faux snow, twine and twigs make pretty DIY ornaments.



It was the **Holiday Tour of Homes** weekend, an annual charity event in Grey County that raises money for local organizations by issuing tickets to locals and visitors to visit a series of homes decked out in holiday décor. The Holiday Tour of Homes usually raises money in support of Second Chance Kids and Quota International of Owen Sound, the latter funnels resources into the community to help the deaf, hard of hearing and speech-impaired, as well as disadvantaged women and children. Through Quota, funds raised during the Holiday Tour of Homes have also gone to support the Owen Sound Police Services' KIDS Program and the Special Olympics Torch Run. The money raised at this year's event went to the Chapman House Residential Hospice of Grey Bruce.

"It has really become an annual community event, with not only local people attending, but people from all over Ontario. We pride ourselves on the high calibre of décor we are able to showcase on the tour each year," explains event planner Rob Dinsmore,



LEFT: It's okay to have two Christmas trees in one home; the large tree adorns the lower level, while a more compact version brought shine to the living room.

ABOVE: The mason jar vanity light was a DIY rehab project. **RIGHT:** A cedar chest filled with winter toss cushions and a wool throw becomes a Christmas décor vignette with the help of some greenery. **BELOW:** The minimalist twine wreath hanging in the living room window plays up the burlap accents in the adjacent dining area.



This DIY lamp was made by Tedra and Brian from a salvaged barn beam.



who has been participating in the tour as a decorator for over 20 years. "This was Tedra's first year on the tour and we try very much to offer different homes every year to keep the event fresh and exciting."

Participating designers on last year's tour included **Memorable Designs, Then & Now Consignment & Home Décor**, barebitch, **Flower Expressions, Four Seasons Party Rentals**, and **Wilma's Flower Shoppe Designs and Décor**. The 2016 designers include some from last year and also **Décor Design**.

Having the Ceasers' home decorated for Christmas by barebitch was a natural choice, as Tedra's sense of personal style aligns with the neutral and natural

Continued on page 32

feature

An antique pulley and mason jars make for a fun light fixture. ➔



A three season sun room lets the family enjoy the pastoral view in comfort.

aesthetic of the downtown Owen Sound boutique, owned and operated by designer **Jacqueline Furtner** and her husband **Simon**. Tedra has amassed her own small collection of barebirch goods set against the right background palette (paint from **Grey Bruce Paint & Décor**) for the store's aesthetic to really shine.

"Last year I was talking to Rob [Dinsmore] about the tour and he asked if I would be interested in participating, and I told him only if barebirch would do it because they are my favourite store," says Tedra. Jacqueline Furtner adds, "I knew that we had the same taste and I've seen how she has it decorated throughout the year with woodsy and natural tones. Her style made it very easy to infuse Christmas décor that still maintained a cohesive look and kept things simple."

Jacqueline was inspired by the country vista sprawling beyond the home's windows (**McGregor Window & Door**), and thought it was a wonderful idea to bring that rural atmosphere inside during the

winter. Her inspiration is particularly evocative in the three-season sunroom, constructed by **Grey Bruce Patio Enclosures**, where Tedra's own rustic pieces meet with barebirch's décor – natural greenery and lights for a cosy winter atmosphere. The sunroom, which features windows that can be fully opened in the summer, is heated with a gas stove (**Smith & Hladil Home Hardware Building Centre**) and sits adjacent to the home's deck (Lumberock Premium Decking). The engineered hardwood (**McNabb Flooring Solutions**) covers an insulated subfloor for added warmth in the cooler months.

"In our sunroom there's a couple of special items made with salvaged wood that we snatched up when Brian's brother's Cape Chin barn blew down," explains Tedra. "Some Mennonites came out to look at buying the wood, but they said it wasn't salvageable, so we pulled out a number of beams and other items with the hope of incorporating them into our house." *Continued on page 34*



TOP LEFT: The principal en suite gets a festive treatment of branches and reindeer statuary. **TOP RIGHT:** A warm quilt and matching reindeer toss cushions give the principal bedroom a cosy vibe. **BOTTOM LEFT:** The guest bedroom space is given a driftwood treatment, including a wreath, deer and candle holders in the shape of small evergreen trees. **BOTTOM RIGHT:** Filling standard patio candle lanterns with battery powered LED twinkle lights grants them year-round life.



feature

Make your own driftwood tree with some hot glue and a styrofoam cone.



Tedra and Brian spend a good deal of time crafting together in the garage, which is how they came up with the idea to use the salvaged wood to create a live-edge coffee table, two end tables, a mason jar light on the antique pulley in the sun room and a number of barn-beam floor lamps throughout the house.

“I grew up in the country in Pike Bay on the water, and our house was all barn board cupboards, wagon wheel chandeliers and fur rugs. As a kid I thought it was all horrible, but now I love that type of décor!” says Tedra, who likes to hunt around locally for the right pieces for her home. “There are so many cool stores you don’t find in big cities that are all around here. I go to Collingwood, Meaford, everywhere I can, and I don’t always buy things, sometimes it’s just trips for style inspiration.”

Jacqueline focused a lot on greenery when decorating the Ceaser home, including a number of Christmas trees with different themed ornaments, and draped garlands across many surfaces. The show-stopping trees are adorned in beautiful ornamentation that reflects the woodsy, natural and rural vibe that Jacqueline was channelling from Tedra’s home.

All in all, the home exudes more of a sense of cosy winter charm than it does glitzy traditional Christmas. The antique sets of skis and snowshoes, the little wooden sleds, the tree branch candle holders, fur throws, winter-themed accent cushions, and smatterings of burlap, twine and driftwood help create a holiday look that will last from November to March with only a little tweaking (perhaps the Christmas trees may come down some time after New Year’s Day). **OH**



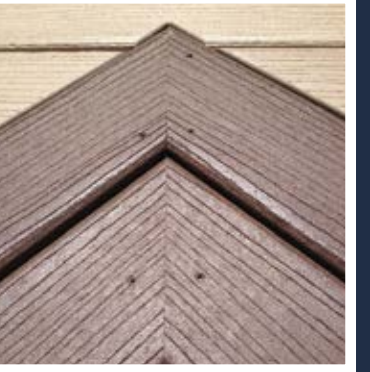
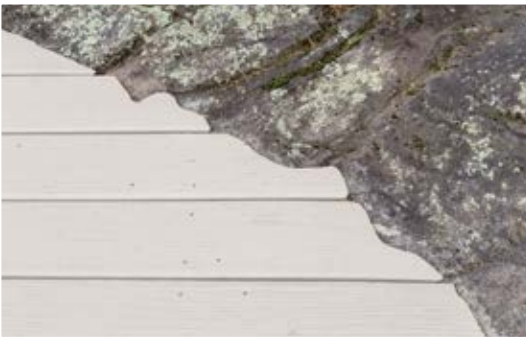
ABOVE: Jacqueline Furtner of barebirch wrapped a number of Christmas balls in coordinating fabrics for a fun country-chic look. **LEFT:** Stockings, greenery, and fur throws complete the winter woodsy Christmas in the Ceaser home.

SOURCE GUIDE

- Air-Tech Mechanical • barebirch
- Baycrest Distribution • Décor Design
- Exquisite Wood Designs • Grey Bruce Paint & Décor • Grey Bruce Patio Enclosures • McDonald’s Brand Source Furniture & Appliances • McGregor Window & Door • McNabb Flooring Solutions • The Old Barn • Peninsula Overhead Doors • Westside Nurseries

FINALLY,
A SYNTHETIC LUMBER THAT
DOES WHAT IT PROMISES.

SEASON AFTER SEASON.



THERE IS NO COMPARISON
Lumberock outperforms in every way.

Imagine a lumber that won’t rot, split, mold or stain. It can’t be damaged by water or insects. It cuts and shapes as easily as wood, installs without pre-drilling, and can span 24 inches.

It’s stocked locally at **Van Dolder’s Custom Exteriors** and comes in a dozen standard colours.

Best of all, it comes with a lifetime warranty.



Discover the difference at
www.vandolders.com
or visit a showroom in
Owen Sound or Collingwood





Signature
HOMESTYLES®

Independent Representative

Theresa Stade
519-372-5681
theressa_stade@hotmail.com
www.mysignaturehomestyles.ca/tstade

Vanessa Gowan
519-379-7944
vanessasignaturehomestyles@hotmail.com
www.mysignaturehomestyles.ca/vanessagowanshs



Elite
Woodcraft

Fine Custom
Kitchen Cabinetry
& Furniture

elitewoodcraft.org

519-373-4740

"Cut with precision, crafted with quality"



Come in
and see
what's new.

G B
P D

Grey Bruce
Paint & Décor

Benjamin Moore

1580 20th Street East
Owen Sound
519-371-4207



MODERN FENCING
Nice to have around the House & Farm
RESIDENTIAL • COMMERCIAL

Chain Link Vinyl Fencing
Wood Privacy Swimming Pools
Tennis Courts Farm Fence
Baseball Diamonds & Batting Cages
Portable Rental Fence Panels

107 1st Ave S. Chesley, ON
519-363-2872 • www.blfarm.com



POSTECH
SCREW PILES

PERFECT FOR ANY
CONSTRUCTION OR RENOVATION PROJECT

STARTING OFF
ON A SOLID FOUNDATION

THE MOST TRUSTED SCREW
PILE EVER DESIGNED!
GUARANTEED

TO CONTACT YOUR
EXPERT INSTALLER

POSTECH GREY BRUCE
grey-bruce@postech-foundations.com
519-924-0050 | postech-foundations.com



Natural Stone, Natural Beauty

LEDGEROCK
OWEN SOUND

www.ledgerock.com

866-877-5704

PLANK TREES

STORY **EMIL MAKKAR & GINA MAKKAR**
PHOTOGRAPHY **JASON HARTOG**

It's beginning to look a lot like winter. These wood trees are a nature-inspired addition to your seasonal décor. Dress up your front porch or keep them indoors. Add twinkle lights or garland to incorporate them into your festive designs.

For this project, we used pine boards. Want something more rustic? Make them from pallets or reclaimed wood. We produced a 3-plank tree, a 4-plank tree and a 5-plank tree. Add layers to make your trees as large as you like!

HOW-TO:

- Set your mitre saw to 30 degrees.
- Cut the triangle for the treetop by mitre-cutting the end of one board, flipping the board and cutting the third side of the triangle.
- To cut the plank below the treetop, line your board up against the triangle and mark one inch on either end to offset your miter cut and create the desired layer effect.
- For cutting subsequent layers, offset the board up against the preceding cut piece so that the layered tree effect will remain uniform.
- Mock up one tree, measure its total height, add 2 to 3 inches and cut a tree trunk to that length. Repeat for all trunks.
- Sand any rough edges of your pieces.
- Stain your tree and trunk pieces and let dry. We mocked up our trees to know which shades we wanted on each layer.
- Once dry, apply a bead of wood glue to the trunk. Line up your tree layers and press them gently to the trunk to adhere. Extend the trunk at least 4 inches below the bottom layer to create a good-sized trunk.
- Once dry, turn over and fasten 1-inch wood screws through the trunk to the back of each plank. **OH**

MATERIALS:

For the trees: Three 1x5x8 boards

For the trunks: Three 1x3x4 boards

Measuring tape

Pencil to mark cuts

Mitre saw

120-grit sandpaper

Wood stain in one or more shades (we used Minwax Early American, Old Grey and Dark Walnut)

Stain brushes

Wood glue (we used Lepage)

Screwdriver or power drill with screwdriver bit

1-inch wood screws



*A little temptation ...
from those who spend their lives trying to avoid it.*



Country Charm Mennonite Furniture

Furniture to match your look and needs. Let us design and build for your home.

Bedrooms Buffets & Hutches Chairs & Rockers Tables Home Office

17 George St, Caledon **519-927-1789** | Hwy 6 & 10, Owen Sound **519-376-4434**
www.ccharm.com

decorating




3 holiday styles

RUSTIC CABIN



1. **ÀLAMODE HOME:** Rejoice Stocking
2. **ABBOTT:** Small Ski & Poles
3. **GRASSLANDS ROAD:** Snow Buddies Ornament
4. **ABBOTT:** Skates Pair Ornament
5. **TRANSPAC:** Galvanized Metal Christmas Banner
6. **ABBOTT:** Large Pine Branch with Antler Wreath
7. **GRASSLANDS ROAD:** 3 Floral Sprigs on Wood Block
8. **LUVCAN IMPORTS INC:** Birch Garland - 3.2" Star
9. **BRUNELLI:** Chevreuril Cushion
10. **BRUNELLI:** Coyote Cushion
11. **BRUNELLI:** Jingle Bells Sham & Throw
12. **VILLEROY & BOCH:** Naif Christmas Dinnerware
13. **ABBOTT:** Enamel Look Mug in Red
14. **GRASSLANDS ROAD:** Bird Figurines With Hats
15. **BALSAM HILL:** Galvanized Tree Collar

Continued on page 42






Pellow

PHARMASAVE

GIFTS, HOME DÉCOR & MORE!

**Introducing
our new
clothing line!**

SIMPLY Noelle.

232 Durham St., Walkerton, ON
519.881.0151 pellowpharmasave.com



LE CREUSET

MAKING SPIRITS BRIGHT



Kitchenware ■ Bathware ■ Hardware

874 2nd Ave East, Owen Sound
519-376-7729 / 888-666-6618
fulfords.com

Visit Our

Christmas Wonderland

And Catch The Spirit of Christmas!

Daily 1/2 Price Specials

"The Magic of Christmas Begins Here"



The Fyre Place & Patio Shop

Since 1973

Located at Highway 6 & 21
Springmount (Near Owen Sound)
519.371.2963
thefyreplace.com

decorating



COASTAL

1. **ABBOTT:** Spouting Whale Ornament
 2. **BIRCHLANE:** Driftwood Star 3. **TRANSPAC:** Driftwood Starfish Ornament 4. **TRANSPAC:** Res Silver Coastal Ornament 5. **LUVCAN IMPORTS INC:** Birch Bark Wrapped Ball 6. **EASTERN ACCENTS:** Studio 773 Horsey Spa Stocking 7. **ABBOTT:** Medium Reindeer Head Planter 8. **PAVILION GIFT:** Holiday Door Stopper 9. **DIMOND-HOME:** Natural Driftwood Garland 10. **LENOX:** Brian Gluckstein Clara Aqua Dinnerware 11. **ZODAX:** Decorative Shell Trees 12. **ABBOTT:** Large Natural Twig Display Tree 13. **JAIPUR LIVING:** Seabreeze Throw in Mineral Blue & Birch 14. **PARK DESIGNS:** Noel Printed 16" Pillow Cover 15. **ONE BELLA CASA:** Let It Mix & Match Holiday - Ivory Ice Blue Throw Pillows 16. **ABBOTT:** Large "For Elf Use" Gift Sack 17. **EASTERN ACCENTS:** Studio 773 Treasure Coast Tree Skirt

Continued on page 44

Breathtaking Beauty, European Elegance



your home • your self • your life



Exclusive Giftware | Fine Furnishings | Chandeliers | Jewellery
 Carpets | Artwork | Sculptures | Mirrors | Millinery
 Paperie | Parfumerie | Whimsy & more

*Fabulous selections, great hours, wonderful service.
 Stop in and see the store that everyone's talking about.*

We carry the entire line of Chalk Paint™
 decorative paints by Annie Sloan.
 Please visit www.anniesloan.com to find a retailer near you.



770 Queen St., Kincardine (519) 396-GIFT | 322 10th St., Hanover (226) 434-GIFT
www.JADORN.ca



Select items available online at
SHOPTIQUES.COM



CANADIAN GIFT
 ASSOCIATION™

RETAILER OF
 DISTINCTION

2015

decorating



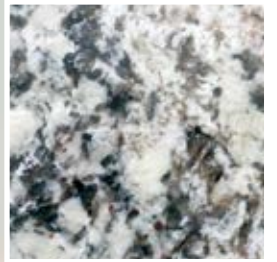
MODERN



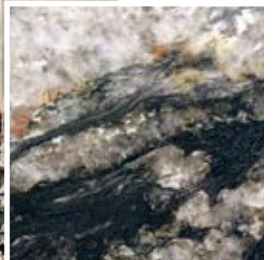
1. **TRANSPAC:** Feather Garland 2. **ZODAX:** Decorative Star Ornament in Silver 3. **TRANSPAC:** Metal Cutout Tree Ornaments 4. **ABBOTT:** Knit Deer Wall Decor 5. **ALLMODERN:** Vickerman 24" Shatterproof Ball Ornament Christmas Wreath 6. **ZODAX:** Reindeer with Golden Antlers 7. **ZODAX:** Silver Plated Ceramic Stemmed Christmas Trees 8. **GRASSLANDS ROAD:** Gold Monogram Mugs 9. **EASTERN ACCENTS:** Studio 773 Wishing Stocking 10. **GRASSLANDS ROAD:** Reindeer Glasses 11. **BRUNELLI:** Yogi Throw 12. **GRASSLANDS ROAD:** Peace and Joy Pillows 13. **SARO LIFESTYLE:** Jelena Placemat 14. **CANVAS HOME:** Dauville Dinnerware in Gold and Platinum 15. **ABBOTT:** Large "Do Not Shake..." Gift Sack 16. **EASTERN ACCENTS:** Studio 773 Believing Tree Skirt **OH**

Personalized to Perfection

EXCLUSIVELY AT DI PIETRA DESIGN



BIANO RIVIERA



NERO COSMOS



TYPHOON BORDEAUX



WHITE ICE

DPD
DI PIETRA DESIGN
COUNTER TOPS

705.727.0096 | 672 Welham Rd - Barrie | www.dpd360.com



cooking at home

DUNDEE ALMOND CAKE

RECIPE AND PHOTOS **PAT CROCKER**



In 1505, William Warham was enthroned as Archbishop of Canterbury in England and one of the “banquetting stuffe” served on boards at the great celebratory feast following the grand event was marmalade.

Arriving on ships from southern Europe, marmalade, at that time, was a firm, dry paste made from bitter citrus fruits and peels that had been boiled in water and re-boiled with sugar or honey.

By 1797, James Keiller and Son in Scotland was established as manufacturer of a fine preserve made with Seville oranges. Keiller’s wife Janet sugared, chipped, boiled and potted up Seville oranges salvaged from the cargo of a storm-driven ship that ended up in the Scottish harbour of Dundee, giving the marmalade its “Dundee” moniker.

Now, over two centuries later, we’ve put a new twist on the famous Scottish breakfast spread. Enjoy the sweet-tartness of marmalade in a holiday cake made from another exotic ingredient: almonds. With minimal ingredients, this cake is gluten free and, for a cake that relies on nuts for its structure, it is surprisingly light due to the egg-white meringue. Orange sauce is drizzled over the warm cake or it can be passed separately at the table.

INGREDIENTS

- 1 cup granulated sugar
- 2 Tbsp chopped fresh rosemary, optional
- 4 eggs, separated
- 1-¼ cups blanched almonds
- Grated rind of 3 oranges (about 3 Tbsp)
- Juice of 3 oranges (about 1-¼ cups juice)
- ¼ cup Dundee marmalade
- ¼ cup icing sugar

INSTRUCTIONS

- Preheat oven to 350°F.
- Line the bottom of a 9-inch circular springform pan with parchment paper. Lightly grease the bottom and sides of the pan with butter or coconut oil.
- Using a food processor, process the sugar with the rosemary until the rosemary is fine. Transfer herbed sugar to a bowl and wipe out processor.
- In a separate bowl, whisk the egg yolks with ½ cup of the herbed sugar until well blended.
- Using the food processor, add almonds and process until coarse. At this stage, the almonds should not be ground or finely chopped. Stop the processor. With the yolk mixture in hand, restart the processor and add the yolk mixture through the opening in the lid, processing until the mixture is thick and smooth. Scrape the mixture into a large bowl and stir in orange rind. If the mixture is too thick or dry, stir in 1 or 2 tablespoons orange juice until it is the consistency of thick cake batter.
- In a separate bowl, beat egg whites until soft peaks form. Sprinkle 1 Tbsp of the herbed sugar over and beat until the peaks hold their shape in a stiff meringue. Fold half of the meringue into the almond mixture until just evenly mixed. Quickly fold the remaining meringue into the mixture, being careful not to over-mix in order to keep the air in the whites.
- Gently spoon the batter into the prepared pan. Bake in preheated oven for 35 minutes, or until set in the centre and a golden colour.
- Set aside to cool on a cooling rack until the sides have shrunk away from the pan. Remove springform and transfer cake to a serving plate.
- Make orange sauce. In a saucepan, combine orange juice, marmalade and remaining herbed sugar. Bring to a boil over medium-high heat. Lower the heat and lightly boil for 10 minutes or until thickened slightly.
- Drizzle orange sauce over the top of the cake and let sit for 20 minutes before serving. Or make a puddle of orange sauce on each serving plate and arrange a slice of cake on top. Dust with icing sugar. **OH**

Pat Crocker is a Culinary Herbalist, writing and growing herbs in Grey County. She is the author of 18 cookbooks.

online Get more recipes at ourhomes.ca/mag/cook

STYLE

IDEAS

TRENDS

Local Homes, Local Retailers, Local Trades.

OUR HOMES helps you find exactly what you need for your home and it's just around the corner.

ourhomes

Your local magazine about everything home.

ourhomes.ca

STIHL GIFT IDEAS.

www.stihl.ca

\$269⁹⁵ WITH 16" BAR
GAS CHAIN SAW MS 170

RECEIVE A FREE WOOD-PRO™ KIT WITH THE PURCHASE OF ANY ELIGIBLE STIHL CHAIN SAW - AN \$85 VALUE

EXPERIENCE **STIHL'S** BATTERY-POWERED EQUIPMENT TODAY IN OUR STORE!

We Stock **STIHL & OUTFITTERS** Products

Highland Supply
92 Main St W. Dundalk
519.923.2240 / 800.295.9154
email: sales@highlandsupply.ca
www.highlandsupply.ca
Promotion valid until 12/31/16 or while quantities last in store.



HACKStONE Landscapes

Your life. Your style.

519 922 2929 www.hackstone.ca

landscapeontario.com Green for Life!

landscape industry certified

houzz

LANDSCAPE ONTARIO Awards of Excellence



STORY **SARAH SLOAN**
PHOTOGRAPHY **STEVE SMALL**



Lani Lorenz, Joannie Pollard,
Kathe Frazee, Tina Bieman



FURNITURE *through the ages*



THE PLACE: It was in 1949 when Edward “Smitty” Schmidt, along with his two sons, opened Smitty’s Shopping Centre in Hanover – a town already well known in the Canadian furniture industry. Their store specialized in pianos, groceries, hardware and paint. In the 1960s, Smitty added appliances, drapery, carpet and furniture. It was soon rebranded **Smitty’s Fine Furniture**, attracting clients from near and urban centres. By 1980 its focus became Canadian-made products. With success came expansion and an

additional location opened in Cambridge in 1985, which was relocated to Kitchener in 2014. Nearly seven decades later, the business is still owned and managed by family members who agree that “home furnishings must be in our blood!”

THE STYLE: It’s not just the incredible selection of Canadian-made furniture that comforts clients at Smitty’s, it’s also the dedicated, friendly and knowledgeable staff that keeps third generation customers coming back to buy their

furniture. With help from 12 interior decorator sales consultants between two store locations, customers can easily find the right design, style and colour combination for their homes.

WHAT’S HOT: You will always find the latest styles at Smitty’s Fine Furniture. Their Canadian-made sectionals, recliners, leather goods and dinettes are in demand. “Our customers want to know the type of wood used, where it comes from, how the product is produced and what’s inside,” says Lani Lorenz, sales manager and granddaughter of Edward Schmidt. As for what’s hot, you just have to look at the catwalk as furniture design follows fashion trends. “So naturally, the furniture pieces have become much more colourful, patterned and lighter over the

past few years. Wood finishes have light washes and can be highly distressed.”

FAVOURITES: “Sixty per cent of our business is customized for the customer, not only upholstery, but most bedroom suites, dining rooms and occasional pieces,” says Lani. “Tables can now be made-to-order according to the customer’s desire for colour and distressing.”

GET THERE: 170 3rd St., Hanover 519.364.3800 | smittysfurniture.com **OH**



Topnotch furniture

manufacturers of fine furniture



HANDCRAFTED, SOLID WOOD, RECLAIMED & FINE FURNITURE. 16 YEARS OF PROFESSIONAL DESIGN AND MANUFACTURING. BRING US ANY IDEA AND WE WILL BRING IT TO LIFE!!

519-335-3213

www.topnotchfurniture.com

#89446 HURON ROAD 30, FORDWICH LINE, 1 KM NORTH OF HWY. 87 GORRIE, ON

48 Units for sale - Starting at \$288,990

Enjoy carefree luxury living at
Lamplighter Estates




Quality construction by
Queen's Bush Construction

Located on MacKenzie Drive in Mildmay
For an appointment to view, please call Tim Bunker at
519.335.3189

Move More Snow **TORO**
www.toro.com/en-CA

IN-STOCK Promotional Pricing
Starting at \$739⁰⁰ UP TO \$2,339⁰⁰
Ask us what we can do for you!



0% FINANCING AVAILABLE.



Highland Supply
92 Main St W. Dundalk
519.923.2240 800.265.9154
email:sales@highlandsupply.ca
www.highlandsupply.ca

real estate

FIRST HOUSE LAST HOUSE

STORY **MEHREEN SHAHID**
ILLUSTRATION **SHEILA BRITTON**

A recent survey by CIBC shows 86 per cent of millennials view home ownership as important even though 42 per cent of them are renting and 21 per cent live with their parents. What about their baby-boomer parents? Will they downsize or stay put? OUR HOMES spoke to two millennials and two boomers about their next move in this hot housing market.

FIRST PURCHASE

First homes for millennials and a house to retire in for boomers may have more in common than we think.

"I imagine myself in a suburb setting, in a single-detached home," says Renée Chaperon, a 32-year-old millennial from Orillia. "I don't want to be downtown. I like to be on the outskirts of a city but still on a serviced lot with easy access to all of the amenities."

Chaperon would like her first home to have an open-concept living space, a large kitchen with a tucked-in eating space and a large entertainment area. "Inside, I like modern, upgraded countertops and cabinetry and a separation of living space versus private space, meaning the bedrooms have to be completely separate from the living space," says Chaperon, whose ideal house size would be 2,000 square feet. Her other must-haves are enough backyard space for barbecues and parking for guests.

Millennial Jordan Milks shares a similar vision. "I like doing dinners, so I'd like a modern large-sized kitchen and living room," says the 22-year-old, who lives in downtown Toronto. "I definitely want to do a kitchen island, something stationary, with modern cabinets, either stainless steel or cherry wood." But Milks doesn't see himself buying his first home in his current neighbourhood. "It would ideally be a detached or semi-detached house, one or two bedrooms, in a place that will begin to gentrify so that property values will go up in a few years," he adds. The suburbs would also give Milks another must-have: a view overlooking green space.

FINAL LIVING SPACE

Greg Ioannou, a boomer with a love for downtown Toronto, wants many of the above features but right in the heart of the city. "I can't stand gardening, so definitely a condo or co-op," says the 62-year-old. "I want to be near restaurants, theatres, grocery stores and the library, so as central as possible."

Ioannou's must-haves include indoor parking for two cars, a dishwasher, decent laundry, a dining room big enough to entertain a dozen guests, a house wired with high-speed Internet plus a good sound system.

"Good soundproofing is a must, too," he says. "I don't want to have to keep my music quiet or have to listen to the neighbour's hip-hop."

Peace and quiet are also important for 66-year-old Linda White. "I would prefer a two-bedroom bungalow, all one level, without stairs, for easy maintenance inside the house," says the Ramara Township resident. "I still enjoy a yard, so a condo would sort of be my last choice."

Despite being afraid of losing mobility as she and her husband age, White says they like the idea of being in a close-knit community-living-style development with other boomers so they don't have to go far to connect and socialize. Alternatively, they'd rather be in the suburbs so they can enjoy a walk outdoors but still be a short drive or bus ride away from downtown.



SIMILAR WANTS

Both generations seem to agree on the necessity of incorporating green practices in their ideal homes.

"I'd like lots of windows and skylights," says millennial Chaperon. "I'd also like a rooftop garden, just to be more self-sustaining and because green roofs help reflect more heat and keep indoors cool and help with water runoff."

Boomer Ioannou would only opt for green practices that serve a practical rather than ideological purpose, including such features as insulation that cut down heating and cooling costs or solar energy for reducing energy costs.

Millennial Milks, who already leans toward using energy-efficient methods, such as using LED bulbs, would like to incorporate some tech-savvy factors in his first home. "I would look into using technology at home to monitor energy usage remotely," he says. Other green methods would have to stand the test of time before he, like boomer White, would consider using them.

She agrees with Milks and says she would only go for installing proven methods of energy saving and cost cutting, otherwise, it's difficult to splurge on trying out items on a fixed income.

Both groups are eager about energy-saving methods, green spaces, good-sized kitchens and closeness to city amenities. **OH**


Life Style
Kitchen & Bath Design Center
"The Renovation People"



24 Years
of business
excellence!

484 Bruce Street, Hepworth
519-935-3404
"Your affordable alternative"

ENDURING REVIVALS | SYMPATHETIC RENODITIONS | MODERN VERNACULARS

Pamela Farrow
ARCHITECTURAL
TECHNOLOGIST
www.pamhouse.ca
519 334 3456

BLACK & WHITE

STORY JENNIFER SCHLEICH
PHOTOGRAPHY SANDY MACKAY

Beauty



Stark whites and blacks are broken up with a bold blue sofa and the rich warm tones of various cowhides.

The home of Melissa Pallister and her four children pops off the backcountry Southgate road where it is situated amongst a border of pine trees. Neighbouring their home in all directions are the preserved remnants of Ontario history: vintage brick and stone farmhouses. But the Pallister home is more than a little different. *Continued on page 56*

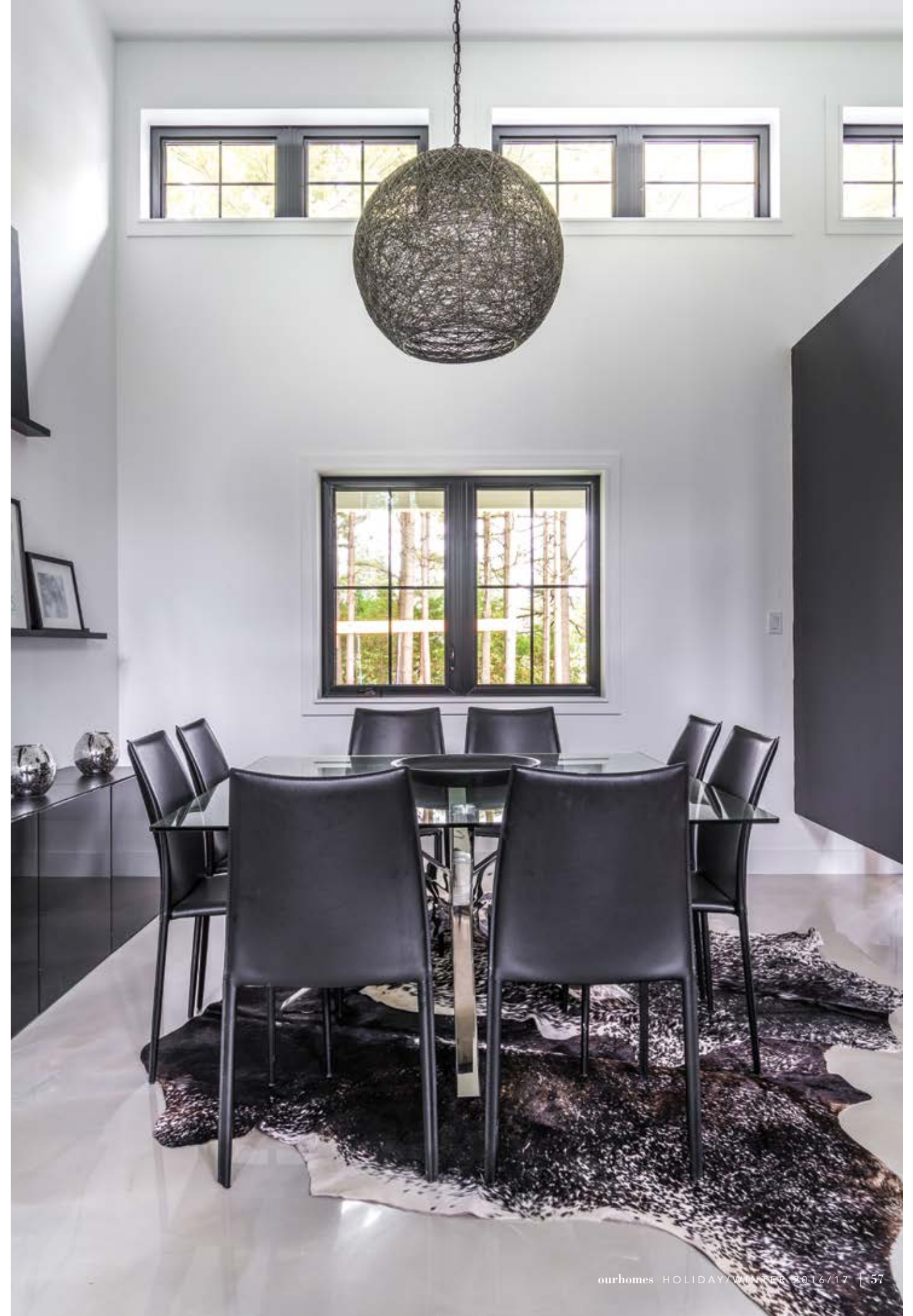


It is an exceptional example of modern design, and yet the stark white of the cedar board-and-batten siding (**Van Dolder's Home Team Custom Exteriors**), long ranch-like silhouette, and classic veranda establish a sense of belonging amidst its more classically rural compatriots.

"I just knew that I wanted to have a very modern, but still functional, family home with the master bedroom at one end and the kids' bedrooms at the other, with a great big open-concept family space," explains Melissa.

Melissa, a former international model who hails from eastern Grey County, has always harboured a passion for design. Sometimes that passion took on different forms – art, fashion, or furniture – but it has always been her preferred method of self-expression. That passion is reflected in the rich details of her new home, which was built by **Jen and Dan Johnson** of Markdale-based **Valley Home Improvements**.

"Melissa had an inspiration photo she focused on from the beginning and we worked to develop the home with that in mind," says Jen Johnson. "She pulled the photo off of Pinterest, which is a great tool we encourage our clients to use to gather their ideas. It's very easy for us to browse through their boards and identify the themes that underlie the clients' desires." *Continued on page 59*



TOP: A specially designed front entrance houses a favourite piece of abstract art. **ABOVE:** The window trim and doors were custom designed to match the colour of the metal roof. **RIGHT:** Jen and Dan Johnson of Valley Home Improvements sit on the porch with home owner Melissa Pallister. **OPPOSITE:** Light fixtures were an important focus in the design of the home, including this intricately woven chandelier pendant.





Geometric pillows in white and black on an entranceway bench complement the home's colour scheme. **LEFT:** Open shelving showcases Melissa's most used and favourite items. **MIDDLE:** A pantry, hidden behind a sleek black barn door, houses small kitchen appliances and other goods. **BOTTOM:** The principal en suite has round his-and-hers vessel sinks, which soften the sharp contemporary angles of the room. **OPPOSITE:** The kitchen features rift-sawn oak cabinetry, matte black pendants with copper interiors, and waterfall quartz countertops in white.



The décor scheme incorporates a black and white colour palette featuring Benjamin Moore's Onyx and Chantilly Lace (paint from [Grey Bruce Paint & Décor](#) and painted by [Kristine Pratt](#)), a variety of textiles and texture, bold light fixtures, contemporary artwork and fine but impressive finishing details.

"I love the simplicity of black and white," says Melissa of the colour scheme. "I really wanted a blank canvas that would allow me to decorate for any season without having the seasonal hues compete, though I wanted one big pop of colour (the sofa), and for the art to speak."

Much of the décor is sourced from Ikea, Crate & Barrel and Structube, but is interspersed with higher end splurge pieces – a smart trick to stay on budget.

"My goal was to stay on budget, and one of the reasons I chose to work with Jen and Dan is that I know Jen through her volunteer efforts in our community, and I've seen first-hand how organized she is so I knew she would keep me on track," adds Melissa.

The home is a combination of comfort and practicality. The plush blue velvet sofa is as comfortable as it looks, and the concrete floors topped in an epoxy coating with a reflector enhancer are beautiful to behold, while still ultra durable ([Extreme Linings and Coatings](#); in-floor heating by [Sandy Hamilton Heating & Plumbing](#)). Melissa's good friends [Alain Johnson](#) and [Jocelyn Bertrand](#) of [Hide and Chic Canada](#) helped her source the perfect hides to complement her new home. *Continued on page 60*



LEFT: Wild green and orange accents amp up the classic white and black of the home's colour palette for the boys' bedroom.
BELOW: A mudroom is a must-have for any busy family, with cubbies and baskets to keep shoes and hats organized.
BOTTOM: Splashes of pink and yellow enliven the girls' bedroom space.



Under the guidance of **Tamarisk McNalty Stephens** of **Tamarisk Interior Design**, the layout was designed around an open-concept core living area that would cater to the needs of the entire family.

"From the beginning, the goal was to help create a home that was comfortable and family-friendly, and yet balanced with personality and style," says Tamarisk. "In the ideation phase, we explored a few different design directions and discovered that Melissa was continually drawn towards a modern aesthetic. Although slightly apprehensive at first, with a little encouragement, she fully committed to the design direction and the overall vision developed from there. Melissa has an innate sense of style and so a large part of my role was to support by helping guide design decisions and provide reassurance when required. Of course, ideas don't get very far without execution and Valley Home Improvements did a great job bringing the vision to life. This project was a lot of fun to be a part of and the end result was achieved through all involved."

The galley-style, open-concept kitchen, custom built by Durham furniture manufacturer **Speke Klein**, features rift-sawn oak cabinetry for a fun contemporary look. Speke Klein also manufactured the principal en suite vanity (plumbing fixtures from **Artery Plumbing**).

Durable quartz countertops from **The Old Barn** form the backbone of the kitchen work area, while open shelving, and a nine-by-four-foot island built for cooking and family-style mealtime complete the kitchen. Adjacent is a walk-in pantry, built by **Wilson Solutions**. Because of the absence of upper cabinetry, the pantry also houses appliances and kitchenwares that would otherwise take up valuable kitchen space.

Continued on page 62



Residential Construction • Project Management
Kitchen & Bathrooms • Additions & Garages
Siding, Soffit & Fascia • Renovations & More

*All the expertise
you need,
under one roof.*

Valley Home Improvements offers reliable, quality workmanship for any budget. After years of experience, from building decks to building homes, we've acquired the knowledge and skills to tackle *any* home renovation. Big or small.

Planning to renovate? Feeling overwhelmed?
Give us a call.
We'll be happy to sit down with you and discuss your options.

519.924.0025
valleyhomeimprovements.ca

**ARE YOU BUILDING?
CALL MAC!**

Let **MAC TAYLOR** prepare your site for your new build. We do it all – test holes, septic design and installation, permit completion, excavation, grading and much more.

We're here to help you **every step of the way.**

www.mactaylor.com
RR#3 Holland Centre, ON N0H 1R0
e. info@mactaylor.com t. 519.794.2380 f. 519.794.3701

THE OLD BARN

POLISHED STONE CREATIONS
Your local source for
Granite, Marble & Quartz Countertops

173480 Mulock Road
519.369.1710
theoldbarngranite.ca



An upholstered bed and another cowhide lend texture and depth to the clean symmetry of the white and black principal bedroom. **BOTTOM RIGHT:** A small alcove in the principal bedroom works as a make-up vanity station.

SOURCE GUIDE

Ashton Electric • Artery Plumbing • Centre Grey Builders • Esker Lee Farms • Extreme Linings and Coatings • Gary Kinsman Eavestrough • GBL Construction • Grey Bruce Paint & Décor • Hide and Chic Canada • Neumann Well Drilling • The Old Barn • Peninsula Overhead Doors • Postech Screw Piles • Roy Russell & Sons Drywall • Russell Crane Services • Tamarisk Interior Design • Sandy Hamilton Heating & Plumbing • Shelburne Home Hardware • Valley Home Improvements • Van Dolder’s Home Team Custom Exteriors



“This is the second time I have used open shelving in a kitchen and I wouldn’t do it any other way,” notes Melissa. “I use everything on the open shelves daily, which limits the clutter.” Jen adds, “We put the microwave in the pantry because we wanted to keep it out of the cabinetry to maintain symmetry as well as space for pots and pans in the galley area.”

Breaking up the expanse of white walls throughout the home are large canvases with intriguing abstract designs by Grey County artist **Evelyne Richer**, a close friend of Melissa’s. “Evelyne’s art makes up most of the art in the house, and we designed the space to accommodate specific pieces,” adds

Melissa. “When I worked as a model I was very influenced by art and I’ve always been interested in any kind of design.” Though the house itself may also look like a work of art at first glance, it is definitely designed to be lived in and not simply looked at – a space used every moment of every day by a busy young family. **OH**

McCann Water Systems

We Specialize In:
Well Pumps – Well Maintenance – Water Softeners
Chalet/Cottage Water maintenance – Iron Filters
UV Disinfection Systems – Reverse Osmosis Systems
Well Flow Test – Well Upgrades

Over 30 years experience in the water industry.

Call us for your complete water system installation or service.
519.986.4743 mccannwatersystems.ca

Has your concrete, flooring, pool, or deck become *unsightly, old and damaged*?
Extreme Linings and Coatings can provide
the perfect solution

We specialize in concrete floor coatings, decorative concrete resurfacing, protective polyurethane coatings and more. Whether it be your garage or shop floor, large agricultural or industrial equipment, we professionally apply the products to protect them all!

EXTREME
linings and coatings

Coatings • Linings • Resurfacing • Garage Flooring
Protective Polyurethane Coatings • Home or Office Flooring
Concrete Overlays • Agricultural Equipment Coatings
Decorative Concrete Resurfacing • Industrial Coating

519-375-6586 extremelac.com

14 HOME ACHIEVERS

STORY **JENNIFER SCHLEICH**
PHOTOGRAPHY **STEVE SMALL**

To celebrate our 10th anniversary in Grey & Bruce Counties, OUR HOMES invited some businesses that have been with us since the beginning to share recollections from the past decade.



GEORGE & PHIL MARTENS

Topnotch Furniture

10-Year Milestones: In the past 10 years we have added many new styles to our lineup, from reclaimed wood to rustic, rough-sawn styles and also a number of contemporary styles. As trends change in décor and furnishings we work hard at bringing our customers styles they want.

Success Secrets: We offer a premium and high quality, custom-built product at very competitive prices.

Where Were You Photographed? This photo was taken by our showroom entrance. The unique spalted-maple slab of wood is exemplary of the type of live-edge material we use to build all types of custom pieces to suit the customer's needs.



JOHN PEDLAR

Rock Solid Landscapes

10-Year Milestones: I would have to say that Rock Solid Landscapes' continuing growth throughout the area, along with building great relationships with our customers, is our greatest milestone.

Success Secrets: The secret is having a great, hard-working and knowledgeable staff that genuinely enjoys their work. I pride myself in having a happy working team built on mutual respect. Client relations are also very important to me and I make every effort to respond timely to questions and concerns, or accommodate busy schedules. I want each client to feel like a priority. The biggest success secret is simply our quality and workmanship.

Where Were You Photographed? The photo was taken at a project in Lora Bay. It was a fun project with a lot of elevation change and it involved installation of natural stone steps, oversize flagstone and Armour stone – exactly what we love to do. *Continued on page 66*



ROB & ERIN WEPPLER

Air-Tech Mechanical

10-Year Milestones: With HVAC businesses coming out of the woodwork these days, we pride ourselves with being a long-term and stable company that has serviced this region for many years. We have always been, and will continue to be here to be called on when needed.

Success Secrets: Having long-term, knowledgeable, efficient and friendly employees, plus keeping our customers happy and satisfied is where it's at.

Where Were You Photographed? Our shop! We built it in 2002 on the corner of our farm after we took full possession of the business and started as Air-Tech Mechanical. Almost 15 years later we are still going strong!



BRENT BACHIU & PHIL NEATH

John Thompson Movers

10-Year Milestones: We have been recognized as one of Canada's 50 Best Managed Companies. We celebrate this outstanding achievement with all our employees, whose collective talents and commitment make a difference to our customers every day.

Success Secrets: Every move is a unique experience and no two families require the same services, so our success is built on providing each customer with individual service and support. We offer the highest standard of care on each move we make and this is what differentiates us from the competition.

Where Were You Photographed? The photograph depicts one of our fully uniformed crews providing moving services. Special care is taken in the home prior to loading to protect all the fine furnishings and sofa bags are used to protect upholstered items.



NICOLE ANDERSON, JASON PAYNE, JUSTIN WEBER & JENN THOMSON

Owen Sound Ledgerock

10-Year Milestones: We've continued to develop new products by expanding our finish options with much success. New finishes include leathered and flamed. Development of a production planning system has ensured customers receive products on time. We've also developed new technology with the addition of CNC and Mastercam 3D art used in programming the CNC machines. This new technology helps push our company ahead of competitors.

Success Secrets: Recruiting the best people and ensuring we have a strong team of people to work with our clients has allowed for limitless possibilities.

Where Were You Photographed? Our sales staff is photographed in front of our Hope Bay material. The honed Hope Bay panels and bands of Hope Bay ledgerrock or splitface material is also visible.



MARILYN & MAC TAYLOR

Mac Taylor Corporation

10-Year Milestones: It's been great to have been a part of OUR HOMES magazine over the past 10 years. We have always appreciated the opportunities to help establish Mac Taylor Corporation as an area leader for the various site services we provide homeowners and building contractors.

Success Secrets: Providing top-notch customer service and anticipating customer needs are what makes a difference to today's consumers.

Where Were You Photographed? This photo was taken at our gravel pit in front of a job site cargo trailer. The trailer is a "travelling tool box" providing everything needed for installing and servicing the systems and also acting as a billboard for Mac Taylor Corporation. Constantly coming up with ideas to improve efficiency is key to increasing the bottom line, while at the same time, keeping costs down for the customer.

Continued on page 68



MIKE COCHRANE

ServiceMaster Restore of Grey Bruce

10-Year Milestones: We have enjoyed continued growth over the last decade with established long-term commitments from our employees and industry associates.

Success Secrets: Continued transparency to our customers, while delivering superior service with honesty and hard work has been the secret to our success.

Where Were You Photographed? At the sign outside the ServiceMaster Restore shop in Balmy Beach. ServiceMaster Restore is a national brand and we take pride in representing it.



LLOYD, SPENCER, STACEY, RYAN, LOGAN & JOHN, WITH MICHAEL SINCLAIR, IAN SINCLAIR & EDITH SINCLAIR

Square Deal Neil's TV & Appliances

10-Year Milestones: We are still here!

Success Secrets: Being large enough to serve all our customers, but remaining small enough to be able to demonstrate we care.

Where Were You Photographed? Our staff was photographed at our store's showroom at 240 Railway Street in Southampton, where all of our new and long-time customers find deals on great appliances.



(BACK) STEVE CUNEO & JORDAN CUNEO, (MIDDLE) BOB, CHRIS, ANNE (FRONT) CATHY & DANA

Cuneo Interiors Carpet One Floor & Home

10-Year Milestones: Cuneo's Carpet One Floor & Home is a three-generation family business, which began in 1948 with Tony Cuneo's store in Walkerton that supplied "everything for your walls, windows, and floors." Cuneo's has evolved to become a member of Carpet One, the largest co-op of flooring stores in North America. The past 10 years have seen innovative flooring styles, especially our new porcelain ceramic kitchen and bath designs and luxury vinyl.

Success Secrets: Joining a large buying group like Carpet One was one of the best moves we made – it gives us the buying power of the "big box" stores, while still keeping our personal touch with our customers, who mean so much to us. Our staff of professionals includes two certified interior designers.

Where Were You Photographed? The picture in this feature was taken in our 6,000 sq. ft. showroom in Hanover.



DON TREMBLE

Candue Homes

10-Year Milestones: In the last 10 years Candue has built approximately 200 houses in the Grey Bruce area! Some of the memorable moments were being the contractor and active volunteer for the new Western Ontario Athletic Association office building in Wingham, demolishing the old school in Durham for a 12-lot development of custom homes on the river, partnering to develop 32 lots in Hanover, spearheading and fundraising the new heated room at the Durham Arena, and constructing the building that houses the Durham library.

Success Secrets: Being actively involved in the community, using local sub-trades and suppliers, and keeping family involved in the business. We always commit to one-on-one interaction with customers from start to finish, making their dreams come true on budget and schedule.

Where Were You Photographed? This picture was taken in the front foyer of our home, which my wife and I personally designed and built. *Continued on page 70*



ANDREW CAINE

McCann Water Systems

10-Year Milestones: To ensure our company is recognized in the area, we are diligent with our public relations and we are continuing to expand our service area to include more of Grey and Bruce counties.

Success Secrets: It comes down to our prompt response time, quality of work and knowledgeable staff. We also keep up to date with the industry through regular training courses.

Where Were You Photographed? On Sunset Boulevard in Thornbury. In this area it can be difficult to find a good source of groundwater, so we installed a large cement cistern to supply water to a cottage.



Custom Locally Made Cabinets, Countertops, Backsplashes, Tiles, Hardwood, Blinds, Fabrics, Home Décor, Lighting ...and More!

The three companies have come together in one awesome showroom to offer you anything you need for your home!

Come in and put the scheme together for your entire new build, your reno or your seasonal update!



519.483.1188
brucecountycustomcabinets.com



519.832.7040
kaitlynshular.com



519.483.1199
dennisonhomes.ca

Visit us at our new location!

1211 MacKenzie Rd.
in Port Elgin

Open Mon. – Fri., 9am – 5pm



ROB BEIRNES

Moggie Valley Timber

10-Year Milestones: Numerous forestry upgrades in our bush operations division have happened over the past decade. Our sawmills now produce cedar decking, v-match lumber and landscape mulch. We are also now FSC certified, which increases our market base.

Success Secrets: We have developed good relationships with other companies, and our key employees have been with us for many years – dedicated work force!

Where Were You Photographed? I was photographed in front of a stack of lumber. Logs are the foundation of everything we make. *Continued on page 72*



ROCKSOLIDLANDSCAPES.CA

landscapeontario.com
Green for Life!



John@RockSolidLandscapes.ca - 519.379.1772



JEREMY BUCK

Di Pietra Design Counter Tops

10-Year Milestones: The past 10 years have been challenging and rewarding for all of us at Di Pietra Design. We have grown 300 per cent, making us the largest stone fabricator north of the GTA. We intend to keep growing, but still keep our small business core values and relationships.

Success Secrets: I'd like to say that there is a secret formula to growing a successful business, but there isn't. It comes down to hard work, dedication, lots of late nights and early mornings. Also, a good foundation of dedicated and talented employees is fundamental. I wouldn't be where I am today without my employees.

Where Were You Photographed? This photograph is taken in the Di Pietra Design showroom with our mascot Rocky, where dogs are always welcome. The showroom is an important tool at our facility, this is where you get to pull all your design pieces together and get creative. Rocky also doesn't mind helping in the decision-making process.

TNT

Dry Ice Services

YOUR ONE STOP

for DRY ICE BLASTING & FINISHING SERVICES

What is Dry Ice Blasting?

DRY ICE BLASTING uses soft dry ice, accelerated at supersonic speeds, and creates mini-explosions on the surface to lift the undesirable item off the underlying substrate, instead of using hard abrasive media to grind on a surface and ultimately damaging it. DRY ICE BLASTING is a food grade cleaning system and leaves no blast media residue. DRY ICE BLASTING is efficient, cost-effective and environmentally friendly.

**Remediate Mould | Historic Restoration
Graffiti Removal | Surface Renewal**

Offering a full line of painting & finishing services.
Serving Ontario's Cleaning Needs

519-378-3590 | info@tntdryice.com

simply beautiful.

WILKINS FENCING

design · build · install

519-376-0002
WILKINSFENCING.CA



KEN & MARK HUTTEN

Hutten & Co. Land and Shore

10-Year Milestones: We have made exciting changes to our brand and identity. Now Hutten & Co. Land and Shore, we increasingly focus on naturalized landscapes and shore solutions. Over time we have built many award-winning projects, and looking ahead we're excited to reach a milestone of 20 years of local service as we continue to grow with our incredible team.

Success Secrets: Our knowledgeable, professional and passionate staff is the key. We love to focus on exceptional service, impeccable customer communication, clear and concise project planning, and creativity in craftsmanship.

Where Were You Photographed? This is a mature shrub backdrop at our office on the outskirts of Owen Sound. Come check out our displays – we'd love to see you! OH

JOHN THOMPSON

MOVERS

Moving Your World

A Higher Standard of Care

**The Area's Premier Moving Company
For Over 49 Years**

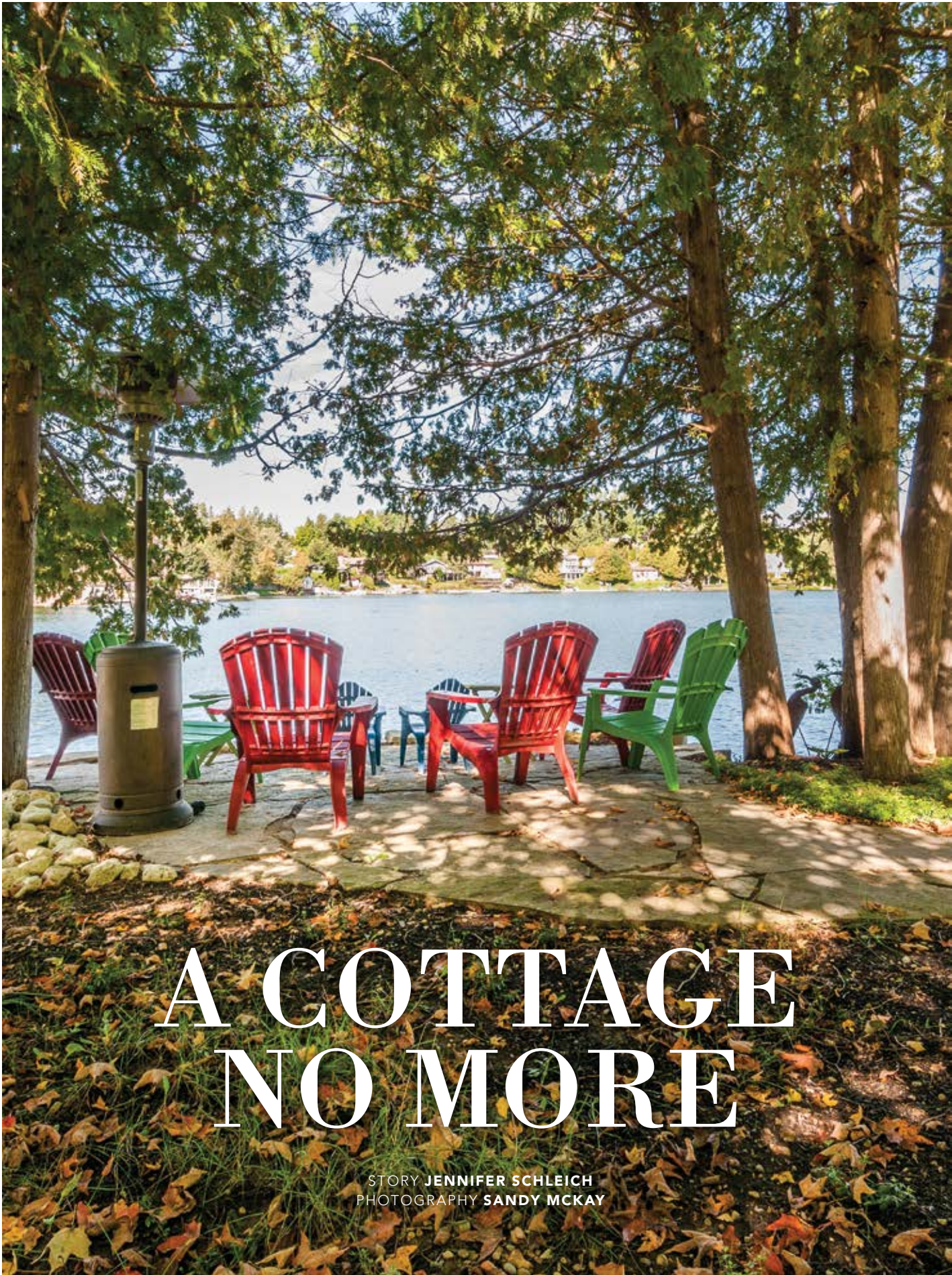
Local • National • Worldwide Moving
• Competitive Pricing • Professional Service
• Temperature Controlled Storage • Public Self Storage

BEST MANAGED COMPANIES CAM
United Van Lines

519.376.7613 • 1.800.567.5354
johnthompsonmovers@jtmovers.com

Exquisite handcrafted timber frame homes

519.794.0400 WWW.GREATLAKESFRAME.COM



Four years summering on Lake Rosalind was all it took to convince Debi and Ken Coleman to transform their humble lakeside cottage into a year-round permanent abode. It might have been the glittering blue water, the quaint boathouses dotting the shore, or perhaps it was the special sense of community that attracted them. *Continued on page 77*

LEFT: The exterior of the cottage is a combination of durable user-friendly materials, including stone and vinyl siding that looks remarkably like genuine cedar shake. **TOP:** A bright red front door pops off the neutral facade of the Coleman home, which is located at the bottom of a steep hill. **OPPOSITE:** A flagstone patio looks out on Lake Rosalind, a small lakeside community on the outskirts of Hanover.

Trim is painted in Benjamin Moore Cloud White.



Decorative wood beams were a must-have for the homeowners and lend a rustic cottage air to the otherwise contemporary home.

RIGHT: An antique radio inherited from Ken's family finds a home beside the central hearth constructed of floor-to-ceiling stone. **BELOW:** The antique "pineapple" table, so named for the detailing on the legs, seats eight for dinner parties and family meals. **BOTTOM:** Homeowner Debi Coleman (right) and architectural technologist Pam Farrow (left) look for décor inspiration.



The wall colour is Mercurial by PPG Manor Hall Paints.



"Though it was our cottage, we spent most of our time here anyway," explains Debi about the ease of their decision. Helped along by their daughter Kate and her husband Josh, who decided the time was right to take over the family's nearby homestead, the couple set to work on planning their cottage's transformation. Together with local architectural technologist **Pamela Farrow**, they embarked on a quest to create a quality home full of locally-sourced materials. Pam led them through the twisting ups and downs of

Saugen Valley Conservation Area bylaws. Even with her expert design guidance, it quickly became apparent that performing what Pam calls the "renodition" would be impossible due to the cottage's location on the site, combined with building restrictions at the lakeshore. "We had our first meeting with Pam here at the cottage and we were blown away by her design sense immediately," says Debi. "She listened! She paid attention to our wants and needs." *Continued on page 78*



LEFT: A large bi-level island provides a visual break in the galley style eating area that looks through to the great room, and also accommodates more comfortable seating for children. **BELOW:** Sleek granite countertops and custom-made bar stools, stained to match the floor, complete the kitchen. **RIGHT:** The great room as seen from the bedroom loft above.

Working with an architectural technologist was an interesting experience not every home builder goes through. Pam's process involves nailing down the characteristics of the client, establishing a sense of how natural light infiltrates and moves across the site, and constructing a floor plan in CAD in order to produce colour perspectives, 3D drawings and exterior representations. Pam, who says that she is nothing without the client, considers every aspect important to her clients and integrates it all into the finished design. She notes she is keen to push boundaries in design in order to achieve the best results.

"I feed off the client," she explains. "When you push the envelope, everyone is always the happiest. The best end result comes when you push peoples' comfort levels."

With the decision to build made, the trio swiftly turned to planning a new build that would take advantage of the mature lot's complexity and scenic water views. Enter **D's Construction**, a Walkerton-based company headed by **Darren O'Hagan** and **Devin Clancy**, who took on the task of building the new 1,300 sq. ft. home, complete with a walkout basement and upper loft bedroom suite. D's Construction, which was also responsible for the roof and a show-stopping live-edge staircase made of reclaimed soft maple, brought the vision to palpable life.

The home, which is located at the bottom of a steep slope, is covered in a user-friendly exterior of stone (**Shouldice Designer Stone**, installed by **Keystone Masonry**), vinyl siding that mimics cedar shakes with surprising authenticity, and composite decking. **Neerhof Landscapes** crafted the perennial gardens and lawns, bordered by impressive stone features.

"I paddle-boarded over here from my own house with my coffee one morning and contemplated the exterior for a good 45 minutes," says designer **Heather Smillie** of **House Rules Design Centre**, who guided the Colemans in their selection of finishes, including the exterior siding. "It was hard to decide where to stop and start the mixture of manmade materials and we wanted to get the cedar-look shakes right." (House Rules Design



Centre also provided the window coverings, paint, cabinetry hardware and light fixtures).

Nestled under the porch overhang is a bold solid-faced red front door (**Rona Hanover Building Centre**) that soars to the rafters. Debi and Ken elected to forgo windows around the foyer space in order to improve the home's privacy, as the front door swings open at the foot of the main staircase.

Natural slate tile flooring (House Rules Design Centre, installed by **Gary Voisin**) greets guests entering the foyer, before transitioning into the southwestern Ontario reclaimed hardwood (Adam Brubacher) that is found throughout the home. The wood was installed, stained and finished by **Glen Leslie's Hardwood Flooring**, which also stained and finished the stair railings and custom-made bar stools.

"We really like how much character the bug trackings and manual distressing give to the re-sawn wood," says Debi. As for the slate, "We looked around for porcelain alternatives to slate tile, but nothing came close to the same feel as the natural slate; sometimes you can compromise and sometimes you can't," notes Debi.

And though Ken and Debi certainly love their wood features and slate flooring, the couple opted for a little more practicality in the walkout basement. They thoughtfully installed stamped concrete (**Bill Fortney**) with in-floor heating (**Lippert Plumbing, JSW Heating & Cooling**), sealed for durability and stain-resistance, to accommodate the constant traffic to and from the lake.

On the main floor, the large galley kitchen designed for entertaining with grandchildren in mind, built by **Kreller Kitchens** with granite countertops from **The Old Barn**, also doubles as a pass through to the great room – an unusual design choice that speaks to the couple's desire for a loft bedroom suite.

The open-concept living and dining areas are surrounded by glazing to maximize natural light and the view of Lake Rosalind. Overhead timbers from **Timber Homes** help balance the rustic and contemporary elements of the home, while the rich colour contrast pulls out the warm tones in the stone fireplace (JSW Heating & Cooling, masonry by **Keystone Masonry**). They purchased the furniture from **Smitty's Fine Furniture**.

Continued on page 80



The staircase, which is made with reclaimed live-edge treads turned down to prevent socks from snagging on uneven edges, exhibits the same aged character as the home's re-sawn hardwood flooring.



The principal bedroom comprises the home's loft and looks out on the scenic vista of Lake Rosalind. **BELOW:** The principal en suite shower is a fully tiled spa-like retreat.






WEBSITE jrousecustombuilder.ca

PH/FAX 519.934.0178

EMAIL jrousebuilder@gmail.com

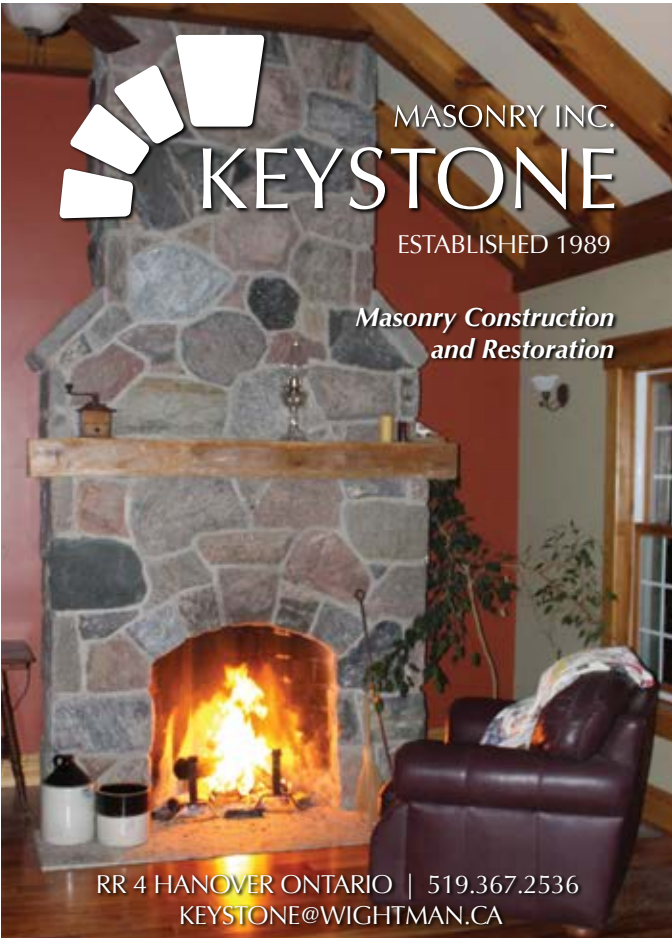


MASONRY INC.

KEYSTONE

ESTABLISHED 1989

Masonry Construction and Restoration



RR 4 HANOVER ONTARIO | 519.367.2536
KEYSTONE@WIGHTMAN.CA



“The timber beams are purely aesthetic,” explains Debi, while Pam adds, “They always knew they wanted that timber component and it fills the volume of the cathedral ceiling well.”

The home truly is a convergence of natural resources rich in weather-worn character and low-maintenance, man-made materials. The quality of the local crafts and tradespeople they worked with allowed the contrasting design elements to flourish together in harmony. **OH**

SOURCE GUIDE

- Bill Fortney • Bogdon & Gross • D's Construction • Gary Voisin • Glen Leslie Hardwood Flooring • HDTV and Electronics • Rona Hanover Home Building Centre • House Rules Design Centre • JSW Heating & Cooling • Kreller Kitchens • Mac Taylor Corporation • Metcalfe Iron Works • Neerhof Landscapes • The Old Barn • Performance Insulation • The Pump Man and Lippert Plumbing • RKS Electric • Schmidt's Paving • Smitty's Fine Furniture • Square Deal Neil's TV & Appliance Centre • Timber Homes



For product, installation and service contact:

DockinaBox®

YOUR LOCAL AUTHORIZED DEALER

Hutten & Co

hutten.ca/docks

519 376 9364 | OWEN SOUND

INDOOR escape

STORY **YANIC SIMARD**
PHOTOGRAPHY
GILLIAN JACKSON

With winter arriving, you may find yourself wanting to spend a lot more time indoors – why not spend this time unwinding in an elegant, spa-like bathroom? Borrow some of my favourite design tips from a recent renovation and create your own retreat.



DESIGN TIP: Tucking functional details like the electrical outlet or toilet roll holder between the toilet and vanity puts them effectively out of sight from most viewing angles, for an austere look.



PHOTO: BRANDON BARRE

Mirror Magic

As you enter this room, you pass a custom mirrored sliding door (located next to the tub/shower), hiding a stacked washer and dryer combo. This puts the laundry centre in a functional spot, but without taking away from the aesthetic elegance of the bathroom – in fact, large mirrors can help a space feel more expansive.

Open Eyelines

Other features help give the room a larger feel: glass doors are used for the shower and on the tall custom storage compartment to keep sight lines open. The airy material and colour palette emphasize pale tones and subtle textures, adding interest while maintaining a breezy feel. Using the same inviting wood to create the floating vanity shelves and the sliding door frame adds consistency and a touch of visual warmth.

Bringing the Heat

Two hidden features keep this room feeling cosy all year. A heated floor system (a perfect complement to cool, crisp tile) radiates warmth – a smart way to make a relatively compact space feel ultra-luxe. To top it off, the stylish wall-mounted towel bar is also heated, for that fresh-out-of-the-dryer feeling any time. *Continued on page 84*

HEATING WITH WOOD

Engaging the public and giving them the tools to make the right decisions about what they burn and how they burn is the first step in an overall wood smoke plan. With proper burning techniques and well-seasoned wood, emissions (even in older stoves) can be significantly reduced.

Two reasons why people are tempted to smolder wood fires:

First, they are reluctant to burn the appliance hot enough because they are worried about overheating nearby combustibles. Our response is that you can't burn clean if you fear for your safety because the installation doesn't conform to code requirements. So the first step is to get it inspected and brought into code compliance.

And second, they think that all the heat that goes up the chimney is wasted heat so they concentrate on keeping the flue gas temperature down. We say that about 20% of the heat released by the burning fuel must be given to the chimney to keep it clean and working properly. It is more efficient to burn the smoke and give plenty of heat to the chimney, than to waste the energy in the smoke by smoldering.

Two reasons why people often burn wet wood:

Procrastination and wishful thinking, and most of us have been guilty of both at one time or other. Firewood dries very slowly, and the harder the wood, the slower it dries. The wetter the climate the slower wood dries. The more shaded the location, the slower wood dries. It has become clear that the super hardwoods like oak and maple will not dry sufficiently in just the summer months. These are difficult lessons to learn.



Five ways to tell if firewood is dry enough:

- ❶ It darkens with age and sun exposure
- ❷ Cracks or checks form in the end grain
- ❸ Two pieces of seasoned wood sound hollow when knocked together
- ❹ A freshly split surface feels warm and dry
- ❺ It does not hiss or bubble from the end grain when burned

Match the size of the fire to the heating needs of the home. When the weather is mild, avoid filling the firebox to capacity; rather, build a small compact fire and load the appliance more often. Use dry wood. The moisture content of the wood has a large effect on the ability of your appliance to make heat. Never let the fire smolder. Think of wood smoke as wasted energy and operate the stove in such a way as to use it before it enters the flue pipe.

Visit Chantico Fireplace Gallery – the first choice of homeowners and custom builders

CHANTICO
fireplace gallery

209784 Hwy. 26 | Craigeith Ontario L9Y 4T9 Tel | 705 | 445 | 9688

Email | chanticofireplaces@rogers.com Website | www.chanticofireplaces.com

design ideas

Niche Appeal

Often, one or more of the walls inside a shower will have a large open cavity, free of pipes – space that can be “borrowed” to add a little extra room to the shower via a wall niche. Placing a niche at elbow height will give you a handy place to store essential products and open up the feel of the space just that little bit more, making it a worthwhile upgrade during renovation.

Featured Selections

Although most of the tile in this bathroom is a classic white 12-by-24-inch porcelain plank (which creates a large, almost seamless look), an accent tile was used to make a statement in the shower. This tile was then repeated as the sink backsplash (run wall-to-wall for a sharp look), for a feeling of continuity. Repeating materials at least once is a good way to make any room appear more harmonious.

DESIGN TIP: Bordering an accent tile with an outline of plank tiles (as done in this shower) frames it like artwork and visually connects the materials, rather than taking the accent wall-to-wall. It's a contemporary twist that makes a sophisticated statement.

Bright Answers

Keeping the lighting scheme richly layered is important in any space, even a smaller one like a bathroom. Here, pot lights are used in the shower area (an often overlooked spot for lighting), but the long vanity wall is actually lit with a subtle LED strip tucked into the ceiling. This gives efficient, even lighting in a soft ethereal glow, for a real sense of brightness despite the lack of a window. Thin accent lights flank the medicine cabinet, adding a little task lighting.

Highs & Lows

Not everything has to be a budget buster. Here, a simple and sleek big-box-store vanity serves perfectly, acting as the quiet anchor in a moody grey. Adding an interesting faucet gives it a unique twist, and picks up on the other glass accents in the room. Remember: saving on some pieces and splurging on others always creates more drama than spending moderately across the board.

DESIGN TIP: One of the easiest ways to style your bathroom is to remove clutter, and then store essentials in minimalist containers like glass jars or white boxes. Just be sure to add at least one purely decorative accent like a fresh blossom!



Create your own escape at home with these picks.



1. **WARMLYOURS:** Infinity Towel Warmer, Hardwired with Programmable Timer 2. **NOVATTO:** Waterfall Lav Faucet with Clear Glass 3. **LUNADA BAY TILE:** Tommy Bahama 1 x 1 Offset Mosaic in Kangaroo Island 4. **CUTLER KITCHEN & BATH:** 36-inch, Four-Drawer Boardwalk Vanity

HOUSE RULES

DESIGN SHOP

BOOK A DESIGN CONSULTATION WITH HEATHER SMILLIE TODAY

For more information call, email or walk in and take a tour of our showroom.
13555 Bruce Rd. 10
Hanover, Ont.
1-226-434-1234

info@houserulesdesign.com
www.houserulesdesign.com



FLOORING LIGHTING PLUMBING FURNITURE TEXTILES PAINT



House Rules Design Shop is your one-stop retail location for your home, whether you are renovating or starting a new build. We offer tailored design solutions featuring flooring, lighting, plumbing and much more. Our talented team is led by Heather Smillie, recently featured on HGTV's *Property Brothers*. We are available to help you create a customized package that suits your home, your style and your budget.

good taste

SPICED HOT CHOCOLATE AND homemade marshmallows



HOMEMADE MARSHMALLOWS

INGREDIENTS

- ¼ cup icing sugar
- ¼ cup cornstarch
- ½ cup ice cold water
- 3 packages gelatin
- ½ cup water
- 1 cup light corn syrup
- 1-½ cups granulated sugar
- ½ tsp salt
- 1 tsp vanilla extract

INSTRUCTIONS

- Line a 9x9 square baking pan with two sheets of parchment paper, allowing the paper to extend over each edge. Brush the parchment paper with light cooking oil, such as canola, and set aside.
- In a small bowl, combine icing sugar and cornstarch. Set aside.
- In the bowl of a stand mixer, combine ½ cup of ice cold water and gelatin. Let this mixture sit to “bloom,” or thicken, the gelatin. Place the bowl on the stand mixer fitted with a whisk attachment – but don’t turn it on just yet!
- In a small saucepan, combine ½ cup water, corn syrup, granulated sugar and salt, cover and heat over medium for 3 to 4 minutes. Do not stir, the sugar will dissolve completely and come to a boil.
- Once boiling, remove the lid and place a candy thermometer to the side of the saucepan. Continue heating until the mixture reaches 240°F, the soft-ball stage. Turn off heat.
- At your stand mixer with the gelatin mix, turn the mixer on medium speed and slowly pour the syrup mixture down the side of the bowl to incorporate with the gelatin. Once incorporated, turn the mixer on high and beat for 10-15 minutes until the mixture becomes thick and looks a bit like soft-serve ice cream. Add vanilla extract during the last minute of mixing.
- Pour mixture in the prepared pan and flatten with a well-oiled spatula.
- Dust the marshmallows with half of the cornstarch-sugar powder. Fold the sides of the parchment paper over the mixture. Let sit for at least four hours or overnight.
- To cut the marshmallows, turn the pan over onto a board dusted with more sugar-cornstarch powder and cut using a pizza cutter or sharp knife. Dust each marshmallow in more of the sugar-cornstarch powder and serve. Store in an airtight container. **OH**



QUALITY
Custom. Hand-built. Mennonite.

519-595-3722
4483 Line 80, Listowel, ON, N4W 3G9



RECIPE AND PHOTOS **JENELLE MCCULLOCH**

Hot chocolate warms short days and chilly nights. Our version not only spikes and spices it up, but homemade marshmallows make it an extra-special, personal treat.

SPICED HOT CHOCOLATE

Serves 2

INGREDIENTS

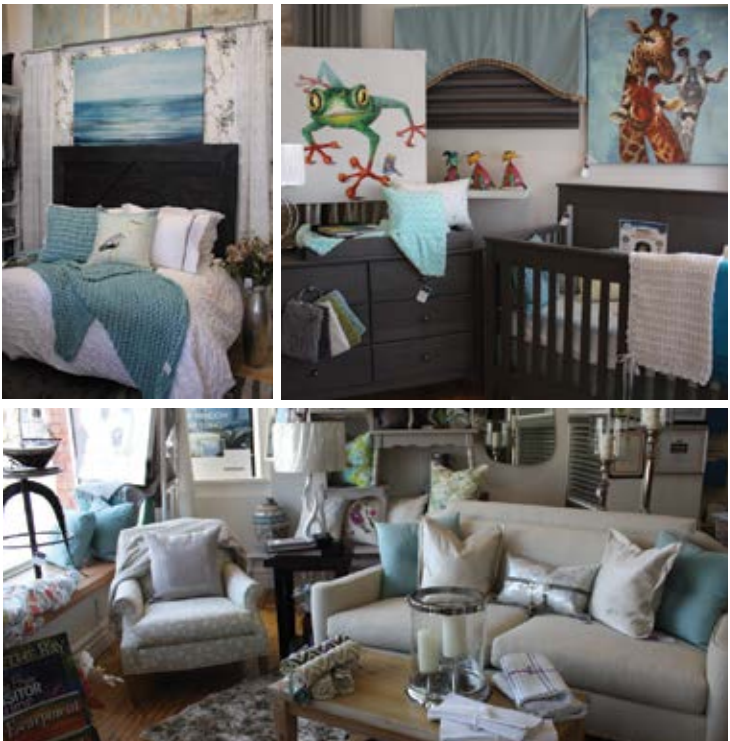
- 1 ounce semisweet chocolate
- 2 cups milk
- 2 Tbsp cocoa powder
- 2 Tbsp sugar
- ½ tsp vanilla extract
- ½ tsp cinnamon
- pinch of cayenne
- pinch of salt
- 1 ounce orange liqueur, optional

INSTRUCTIONS

- Melt chocolate over low heat in a saucepan.
- Add milk, cocoa, sugar, vanilla, cinnamon, cayenne and salt and heat on medium-high, whisking constantly until the mixture is smooth and combined.
- Remove from heat.
- As an option for adults, add 1 ounce of orange liqueur before serving.
- Pour into two mugs, top with homemade marshmallows (recipe follows) and brown with a kitchen torch until golden!

- ◆ Interior Decorating
- ◆ Window Treatments
- ◆ Decor Items
- ◆ Hunter Douglas Blinds
- ◆ Bedding
- ◆ Rugs & Wallpaper
- ◆ Decor Baby

*Ask us about our Wedding
and Baby registry!*



299 8th Street E/ 790 3rd Ave E
Owen Sound, ON
(519) 370-0770
www.decordesign.ca

in the kitchen

Whisk-y BUSINESS

STORY **KIM MASIN**

A whisk is a staple tool for any chef or baker, but which whisk is the right one for the task at hand?

The variations, shapes and uses are many. Our guide will fix the mix-ups so your sauce is thicker, your cream is creamier and your egg whites reach the thickest peaks.

The most popular material for a whisk is wire, however, there are wooden whisks and silicone-coated variations in different shapes and forms, each serving a specific function. Silicone-coated whisks are made of wire coated with heatproof silicone, perfect for non-stick pans.

Balloon Whisk

Dubbed the balloon due to its shape, this is one of the most popular types of whisks. Amazingly, the balloon is made from eight or more flexible wires joined at the ends and attached to a handle. It comes in a number of sizes, from tiny to quite large. Wide uses for this type of whisk make it the most sought after for beating eggs, creating meringues and whipping cream into a thick delight.

SHOWN HERE
TOVOLO: Stainless Steel 11" Whip Whisk



French Whisk

This whisk is similar to the balloon, however its shape is longer and more cylindrical and the series of flexible wires overlap each other to then join together at the handle. Chefs prefer this tool for mixing sauces or for combining ingredients in a deeper pan to access the sides and edges. The flexible wires are preferred when cooking with liquids to create thicker sauces and custards.

SHOWN HERE
BEST MANUFACTURERS, INC.:
10" French Whip with Red Wood Handle



Flat Whisk

Also commonly called a roux whisk, used when cooking flour and fat to thicken sauces. There are fewer loops than you'd expect in a whisk, but they lie flat, rendering the orientation uniquely suited to stirring in shallow pans to create sauces and rid the creation of any unwanted lumps.

SHOWN HERE
OXO: Good Grips Flat Whisk



Spiral Whisk

This type of coil whisk with a slightly angled head is a bit of a luxury purchase, but was specifically designed to make constant contact in a pan or bowl to ensure even mixing and prevent scorching or lumps. This is the perfect tool for smooth vinaigrettes, or for incorporating liquids into a roux.

SHOWN HERE
RÖSLE: Spiral Whisk



Ball Whisk

Fans of the ball whisk claim the lack of the typical whisk loops makes it easier to clean, and allows for quicker and better aeration. The quick aeration makes it a preferred choice for whipping egg whites into the ultimate meringue. Pastry chefs also use this to make elaborate spun-sugar decorations for dessert toppings.

SHOWN HERE
WMF: Flexi Whisk Profi Plus 27 cm



Dough Whisk

The strange triple-loop shape and strength of this whisk is best used to lightly blend mixtures like batters, fruit fillings and muffin batters without overworking the mixture or breaking down the fruit. It can also be used to bring together yeasted pizza dough without all of that sticky mess on a spoon or spatula. **OH**

SHOWN HERE
HIC, HAROLD IMPORT CO.:
Mrs. Anderson's 12" Baking Dough Whisk



For Year Round Comfort...



AIR TECH
MECHANICAL

www.air-tech.ca
We Care About Your Air!
519-934-3358
Heating, Air Conditioning & Ventilation

SG
South Gate Cabinets Inc.

Custom kitchens,
cabinets & millwork

Individually designed
to meet your needs

Quality design, manufacturing
& installation



408065 Grey Rd. #4 R.R.#1 Maxwell ON

www.southgatecabinets.com

1-866-929-9933



INSPIRATION ABOUNDS AT J'ADORN

Welcome to **J'Adorn**, where you can step into a world of sparkling European elegance with a dash of Victorian whimsy, all while strolling through downtown Kincardine and Hanover. Filled with unique gift and décor items, this gem of a boutique is stuffed to the metaphorical rafters with terrific ideas and inspiration for your home, your self, and your life.

YOUR HOME: Whether the look you love is elegant and traditional, shabby-chic, rusty, crusty and chipped or sleek and contemporary, J'Adorn has you covered from floor to ceiling, with carpets, furniture and lighting to suit every home from the traditional to the ultra-modern.

YOUR SELF: J'Adorn has gorgeously scented candles and diffusers to suit your every mood, unscented dinner candles from Paris, the best selection of greeting cards in Grey and Bruce counties, and cozy new winter hats and scarves.

YOUR LIFE: Take a fun workshop, using Chalk Paint™ decorative paint by Annie Sloan! J'Adorn's entire staff is fully trained in the products and can help you get the look you love.

J'Adorn congratulates OUR HOMES Grey Bruce on their 10th anniversary. Everyone loves your magazine: here's to the next ten years!

770 Queen St, Kincardine
519.396.GIFT (4438), and
322 10th Street, Hanover,
226.434.GIFT (4438)
jadorn.ca
facebook.com/JAdornGifts
(Please see ads on pg 43, 97)



EXQUISITE WOOD DESIGNS

Here at **Exquisite Wood Designs Inc.** our primary focus is on quality and integrity. Whether you are building or renovating, our experienced staff will guide you through the design process and turn your vision into a one-of-a-kind piece for your home.

Our process is easy. Just bring us your plans or rough dimensions and we'll start designing. There is no guess work when it comes to how the final will look either. Our state-of-the-art 3D software will bring your space to life. We'll then set up a meeting with you to review and possibly revise the proposed design. Then take you through our showroom to start selecting from the variety of materials that will ultimately become the finished product.

We work with, and design, all kinds of styles. From contemporary to traditional, and everywhere in between. Our expansive showroom houses rooms of samples. Door design, countertop materials, door hardware and kitchen accessories, all the details that will make the custom piece unique to you.

We're continually bringing in new products and innovations, and coming up with new ideas.

If you are looking to get creative, stop by our showroom at 1980 20th St E, Owen Sound, or call us to set up an appointment, 519.370.0808 | ewdesigns.ca
(Please see ad on pg 6)



BUDGET BLINDS OFFERS UNIQUE "HOUSECALL" WINDOW COVERING SERVICES

The **Budget Blinds** concept is unique. Budget Blinds brings the showroom into consumers' homes so they can get a better idea of what will work for their lifestyle and aesthetic. With lifestyles becoming more hectic, consumers require the most convenient services possible for home improvements.

Your professional design consultant, Linda, will come to your home to display, measure and install the products of your choice. You never need to leave your home or take out a measuring tape. **Now that's convenience.** And you'll never have to second-guess your colour choice or measurements. Linda will eliminate the guesswork by bringing hundreds of samples and help you to explore different options for dressing up your windows to suit your style.

Call Linda today for a free in-home consultation and ask about our **EXCLUSIVE** "No Questions Asked" guarantee.

- We are a family owned and operated business which allows us to provide a high level of service throughout your entire project.

- A local business building a solid reputation within our community.

- Low overhead costs and no showroom allow Budget Blinds to provide excellent quality products at competitive prices. 519.793.3921
rlurbshott@budgetblinds.com
budgetblinds.com/owensound
(Please see ad on pg 25)



EXTREME LININGS AND COATINGS

When your concrete, flooring, pool, or deck has become unsightly, old and damaged, **Extreme Linings and Coatings** can help. Located in Owen Sound, ON, we specialize in a variety of areas including concrete floor coatings, decorative concrete resurfacing, protective polyurethane coatings and more. Whether it be your garage or shop floor, large agricultural or industrial equipment, we professionally apply the products to protect them all! With our fully mobile application rig we not only service Grey, Bruce and Simcoe Counties but all of Southwestern Ontario as well.

REFLECTOR™ Enhancer Flooring Systems were engineered with three primary objectives in mind; cost effectiveness, extreme durability, and unique aesthetic appeal. These floor coatings give specifiers, designers, and property owners the ability to have custom designed floor colours and patterns that are unachievable with conventional flooring products.

Although upon initial view the finish looks like that of a chemically reactive type stain or dye, the colour and variation is much deeper. The end result is a floor that can be designed around the theme of the surroundings, not one that will overwhelm or be too conventionally plain and expected. The resin components have greater tensile and compressive strength and abrasion resistance, compared to other flooring options. This makes them a great choice for virtually any residential or commercial project.

519.375.6586 | extremelac.com
(Please see ad on pg 63)

Continued on page 92

ServiceMASTER Restore .ca®

Restoration Services

1.866.622.0106

www.svmrestore-greybruce.ca



Water • Wind • Fire • Mold • Asbestos

24-Hour Emergency Service

LEAKY BASEMENT? DON'T MOP IT...STOP IT!

WISE CRACKS®

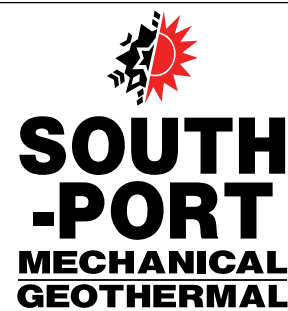
...since 1991

*Permanent Solutions for
Foundation Leaks
...Guaranteed!*

- Crack Injection Specialists
- Exterior Membranes
- Interior Drain System
- Sump Pump Sales
- Lifetime Warranty Fully Transferable

519 372 2795 | 705 444 0409 cochrane.m@rogers.com
www.wisecracks.com

A WISE CRACK IS A DRY ONE®...WE GUARANTEE IT!



SURROUNDINGS

Surroundings is a charming gift and custom framing shop located in beautiful downtown Mildmay. Sherry Durrer and her staff are always ready to offer their creative ideas for your home or custom framing projects.

They strive to bring current giftware and home accents to their customers with a variety of designs and colours. Their staff will discuss your decorating style and assist you in choosing the perfect accents for your home.

Surroundings specializes in custom framing of keepsake items, prints, oils, watercolours and all types of needlework. Surroundings uses only acid-free products to preserve and protect your valuable art and shadow box treasures. They ensure all materials, objects and artwork brought into their shop are handled with respect and care. Surroundings' frame shop uses a computerized matte cutter and specializes in collage framing of sports medals, antique pieces, war medals and family photos. Unique designs can be created using decorative matte corners, cut outs and layers of matting. Surroundings provides professional creative consultations and can assist you with your choices of matte colours and distinctive mouldings to best accent your art work.

The staff at Surroundings invite you to come in and browse through their gift shop and framing gallery. We look forward to seeing you!

Surround Yourself with Style at Surroundings!
58 Elora St, Mildmay
519.367.2636
(Please see ad on pg 25)

SOUTH-PORT MECHANICAL/GEOTHERMAL INC.

We know that you have many choices when it comes to selecting a heating, ventilation, and air conditioning (HVAC) contractor. It takes much more than technical expertise to satisfy the requirements of today's business environment – **South-Port Mechanical/Geothermal Inc.** has been filling those shoes for over 20 years.

Whether you are building a new home or updating your current equipment, there are several factors to consider when selecting a new heating or cooling system, including energy efficiency, initial equipment costs and monthly utility costs, warranties and other considerations. Our experienced technicians can help you sort through the clutter to choose a system that is right for your needs. South-Port Mechanical/Geothermal is a professional residential and commercial retailer, carrying quality brand name products and providing the highest level of sales and service in the Grey/Bruce area.

Thank you to OUR HOMES magazine for producing a high quality product in which businesses such as ours have the opportunity to promote in style.

Contact South-Port Mechanical/Geothermal for your quote today. Let us help you make your house a home.
Contact Ken at geothermal@bmts.com or reach us by phone at 519.389.2665 Monday to Friday from 8am-5pm
(Please see ad on pg 7)

TRAYNOR HOMESTEAD ENTERPRISES – AGE IN PLACE/RELOCATION AND TRANSITION SERVICES

Traynor Homestead Enterprises is a family run business that takes pride in our professional, trustworthy and dependable customer service. We are Certified Relocation and Transition Specialists (CRTS) and Certified Professional Consultants in Aging (CPCA). We specialize in helping seniors and their families through all aspects of aging in place or moving to a new home.

Age In Place services include rightsizing, handyman services, housekeeping, home checks, and de-cluttering. Relocation and Transition services include packing, unpacking, moving, disposal of unwanted items and furniture, setting up your new home, estate sales and use of other professional services as required.

Our team takes a compassionate and flexible approach with each family and together we develop a customized plan tailored to your individual needs and budget. Traynor Homestead Enterprises is fully insured and bondable and provides services in Grey Bruce, Owen Sound and Collingwood areas.

Contact Jerrie, Mike or Josh at 519.376.8791 to arrange a complimentary in-home consultation. For more information email us at traynorhomesteadenterprises@gmail.com or visit us at therelocationandtransitionservices.com
(Please see ad on pg 93)

THE OLD BARN POLISHED STONE CREATIONS

Located on the Mulock Road between Durham and Hanover, **The Old Barn Polished Stone Creations** is your local granite, marble, soapstone, and quartz fabricator. We stock full granite slabs at the shop, as well as quartz samples from many different companies such as: Caesarstone, Hanstone, Silestone, Zodiac, and more. Our staff work with you to ensure your project, big or small, is exactly what you've envisioned. Whether you are looking for an exotic stone to make a bold statement or a neutral colour to blend in, we have it all. Do you have an existing stone surface that needs to be modified? We can do that as well! Template to install, The Old Barn does it all.

We are the exclusive DesignerStone Panel dealer and installer for your area. DesignerStone panels are full size sheets of Onyx, Travertine, and marble with a waterproof backing. They are ideal for showers, Backsplashes, fireplaces, feature walls and more.

We also have a large selection of Remnant pieces, perfect for your vanity, tub surround, outdoor space, table-top, or small kitchen.

Come and visit our shop and showroom, we might have just what you're looking for!
Happy 10th Anniversary OUR HOMES!
173480 Mulock Rd, Hanover
519.369.1710
theoldbarngranite.ca
(Please see ads on pg 17, 61)

Gil & Brandon Vanderschot



gil@os4sale.com
226.923.0481

brandon@os4sale.com
226.923.0482

Residential • Commercial • Agricultural • Financing



Delivering Innovative Solutions in Wood

Mantels | Cabinets | Wall Units
Audio Visual Systems | Storage Units
Home Office Workstations | Murphy Beds
Kitchen Renos | Stone/Tile Backsplashes

THE WOODWORM

317542 Hwy 6 & 10, Owen Sound
519-376-6323 | 416-525-7814
www.thewoodworm.com



AIR CONDITIONING • WATER SYSTEMS • FIREPLACES

519-369-3411

We pride ourselves on offering the highest value on all the products we service & install.



SEPTIC SYSTEM SOLUTIONS!

MAC TAYLOR is the area's leading professional when it comes to septic system design and installation. Knowledgeable, dependable and ready to address the challenges of your specific needs. Call Mac for a free estimate. We're here to help you **every step of the way.**

www.mactaylor.com • RR#3 Holland Centre, ON N0H 1R0
e. info@mactaylor.com • t. 519.794.2380 • f. 519.794.3701

Home comfort you can depend on.

You can count on Heil® heating systems for quiet, energy-efficient and reliable performance, backed by outstanding warranties.

NORTHERN HEATING & VENTILATION

PLUMBING, HEATING A/C, GEOTHERMAL & WATER TREATMENT

Collingwood • Markdale
Owen Sound • Durham

519-371-5815 • 519-986-3307
800-661-5796 • 519-369-1011
northern@sandyhamilton.ca

Feeling overwhelmed?
We can help.

TRAYNOR Homestead Enterprises

Age in Place • Relocation & Transition Services

519.376.8791
traynorhomesteadenterprises@gmail.com
www.therelocationandtransitionservices.com

Merry Christmas from

MAC TAYLOR CORPORATION

RR#3 Holland Centre, ON N0H 1R0
www.mactaylor.com
email: info@mactaylor.com
tel. 519.794.2380 • fax, 519.794.3701

HunterDouglas

Décor DESIGN

SHOWCASE
HunterDouglas

On the corner of 3rd Avenue and 8th Street East, Owen Sound

Call **519-370-0770**
decordesign.ca

FREE
Nest Learning Thermostat and Nest Cam Indoor with purchase of select window shades with PowerView™
value \$579

Offer effective September 19 – December 18, 2016.
* Purchase a minimum of 5 Silhouette® PowerView™ or Quattro® with PowerView™ and receive a FREE Nest Learning Thermostat and Nest Cam Indoor. Valid at participating retailers only. For full details, visit hunterdouglas.ca.

directory

OUR HOMES attracts the area’s finest businesses to advertise in our pages, and utilize our unparalleled distribution and coffee-table appeal to market their products and services. We’re making it easier for you, our readers, to become educated as you plan your home- and real estate-related purchasing decisions. View these business ads online at ourhomes.ca/greybruce. The listings below are organized alphabetically by industry.

ALTERNATIVE ENERGY

Blackline Power, 9

APPLIANCES

Square Deal Neil’s TV & Appliances, 11

ARCHITECTURAL TECHNOLOGISTS

Pam Farrow Architectural Technologist, 53

AUTOMOBILE SALES & SERVICE

Subaru Canada, 2

BUILDERS

Candue Homes, 10
Dennison Homes, 71
James Rouse Custom Builder Ltd., 81
Queen’s Bush Construction, 52
Snyder Development, 15
The Great Lakes Frame Company, 73
Valley Home Improvements, 61
Walker Homes Ltd., 8

BUILDING/LANDSCAPE SUPPLIES

Centre Grey Building Supplies, 95
Flesherton/Markdale Home Hardware, 95
Moggie Valley Timber Inc., 14

CABINETS & MILLWORK/
FINE WOODWORKING

Bruce County Custom Cabinets, 71
Elite Woodcraft, 36
Exquisite Wood Design, 6, 90
Southgate Cabinets, 89
The Woodworm, 93
Topnotch Furniture, 50&51

CONCRETE/MASONRY/STONework

Extreme Linings and Coatings, 63, 90
Keystone Masonry Inc., 81

COUNTERTOPS/GRANITE & STONE

Di Pietra Design, 45
The Old Barn, 17, 61, 92

DECKING

Lumberock, 35
Postech Grey Bruce, 36

DOCKS

Hutten & Co. Land and Shore, 81

EXCAVATING/SITE PREP/SEPTIC

Mac Taylor Corporation, 61, 93

FARM SUPPLIES & MACHINERY

Highland Fuels (Highland Supply), 47, 52

FENCING AND GATES

Modern Fencing, 36
Wilkin’s Fencing, 73

FIREPLACES & STOVES/
HEATING & COOLING

Air Tech Mechanical, 89
Chantico Fireplace Gallery, 83
Pratt Plumbing and Heating, 93
Sandy Hamilton Plumbing & Heating Inc., 93
South-Port Mechanical Geothermal, 7, 92
The Fyre Place & Patio Shop, 41, 97

FLOORING, STAIRS & TRIM

Cuneo Interiors Ltd., 27
Moggie Valley Timber Inc., 14

FOOD/DRINK/CATERING

Top of the Rock, 95

FUEL SUPPLY

Highland Fuels (Highland Supply), 47, 52

FURNITURE/HOME DÉCOR/
GIFTS/COLLECTIBLES

Barebirch, 25
Country Charm, 39
Fulford Hardware, 41
Grey Bruce Paint & Décor, 37
House Rules Design Shop, 85

Inside Ideas, 13
J’Adorn, 43, 90, 97
Kountry Kat Mennonite Furniture, 25
Pellow Pharmasave, 41
Signature Homestyles, 36
Smitty’s Fine Furniture, 13, 99
Surroundings of Mildmay, 25, 92
The Fyre Place & Patio Shop, 41, 97
The Rusty Star, 20
Topnotch Furniture, 50&51

GEOTHERMAL

Sandy Hamilton Plumbing & Heating Inc., 93
South-Port Mechanical Geothermal, 7, 92

GREEN LIVING

Blackline Power, 9

HOME IMPROVEMENT/RENOVATIONS

Fulford Hardware, 41
Valley Home Improvements, 61
Van Dolder’s Custom Exteriors, 35

INTERIOR DESIGN

CR Designs, 21
Cuneo Interiors Ltd., 27
Décor Design, 87, 93
House Rules Design Shop, 85
K-Interiors, 71

KITCHEN AND BATH

Bruce County Custom Cabinets, 71
Exquisite Wood Design, 6, 90
Fulford Hardware, 41
House Rules Design Shop, 85
JWOOD Kitchens & Baths, 87
Life Style Kitchen & Bath Design Center, 53
Southgate Cabinets, 89

LANDSCAPING/LAWN & GARDEN

Hackstone Landscapes, 47
Highland Fuels (Highland Supply), 47, 52
Hutten & Co. Land and Shore, 3
Mulch-It, 36
Rocksolid Landscapes, 5, 71

LIGHTING & ELECTRICAL

Living Lighting, 100

MOVING & STORAGE

John Thompson Movers, 73

NEW HOME COMMUNITIES

Snyder Development, 15
Walker Homes Ltd., 8

PAINTING & DECORATING

Cuneo Interiors Ltd., 27
Grey Bruce Paint & Décor, 37

PAINTING, PRIMING, BLASTING
& STAINING

Custom Soda Prep & Paint, 12

TNT Dry Ice Blasting, 73

Weatherall Stain, 18

PLUMBING

McCann Water Systems, 63
Pratt Plumbing and Heating, 93
Sandy Hamilton Plumbing & Heating Inc., 93

REAL ESTATE

Chestnut Park, 19
Coldwell Bankers Lifestyles Realty – Gil & Brandon Vanderschot, 93

RESTORATION SPECIALISTS

ServiceMaster Restore, 91
Wise Cracks, 91

SERVICES

Traynor Homestead Enterprises, 92, 93

STONE PRODUCTS

Ledgerock, 4, 37

WATER TREATMENT

McCann Water Systems, 63

WINDOW FASHIONS

Budget Blinds of Owen Sound, 25, 90
Cuneo Interiors Ltd., 27
Décor Design, 87, 93
Inside Ideas, 13
Pellow Pharmasave, 41

WINDOWS & DOORS

Van Dolder’s Custom Exteriors, 35

The Municipality of

Grey Highlands

The place for all seasons!

FLESHERTON/MARKDALE
HOME HARDWARE

YOUR SAFETY FOOTWEAR
STORE

TERRA

Blundstone

BAFFIN

Dickies

Markdale and Flesherton Home Hardware for all your paint, plumbing, electrical, hardware, household and outdoor needs. Markdale now carrying a wide selection of safety footwear with the best brands at great prices. Come in and check out our new product lines. As always, our friendly staff are here to help.

Markdale
519.986.3011
markdalehomehardware.ca

Flesherton
519.924.2430
fleshertonhomehardware.ca

CENTRE GREY
BUILDING SUPPLIES

Your one stop home building and improvement store. We carry lumber, insulation, plumbing, electrical, panelling, roofing, handtools, paint, windows and doors. Free delivery and estimates.

74 Lorne St., Markdale
519.986.2641
1.800.461.7093

TOP O'THE ROCK

Everything you need in 1 stop
Groceries – Deli – Bakery
• Rotisserie Chicken & Wings
WEDNESDAY NITE WING NITE
\$8⁹⁹/lb & \$13⁹⁹/2 lbs
• The BEST GOURMET pizza
Every Order Custom Made!
• Caring staff • Quick lunches
• Breakfast Bagels made to order
*We hold ourselves to a higher standard.
YOURS!*
Open Daily 7:30 a.m.

Grey Road #13
Eugenia
519.924.3244 519.924.3185



MATERIALS

- Clear glass vases (I sourced my collection from a dollar store)
- Drop cloth or plastic sheet
- Disposable gloves
- Lint-free rags
- Krud-Kutter Concentrated Cleaner
- 1/3 cup white vinegar
- 1/3 cup water
- Spray bottle (with mist setting)
- Rust-Oleum Mirror Effect spray paint in gold or silver (gold was used for this project)
- Rust-Oleum Painter's Touch 2X Ultra Cover in Clear Matte

DIY
MERCURY GLASS

STORY AND PHOTOS **LEIGH-ANN ALLAIRE PERRAULT**

From rose gold and copper to aged bronze and muted gold patinas, mixed metallics have been adding shine and glitz in both fashion and interior design this year.

But if you've been hesitant to test drive the latest metal trends, here is a simple and affordable do-it-yourself way to create luxe-for-less mercury glass and bring shine to the festive season ahead.

From a collection of vases on a mantel, to an assortment of glass votives to mark each dining table place setting, you can easily transform any old or inexpensive glassware into a bespoke holiday showpiece.

PREPARATION

- Using a lint-free rag and Krud Kutter cleaner, thoroughly clean, rinse and dry the glass surface to ensure that any sticky labels, dust or dirt are removed.
- Fill the spray bottle with one-part water to one-part white vinegar and gently shake to mix.
- In a well-ventilated area, lay a drop cloth on a flat surface and place the first glass item upside down in the centre of the cloth.
- Put on your disposable gloves and shake the can of Mirror Effect spray paint well for about two minutes.

PAINTING

- Holding the Mirror Effect can approximately eight inches away from the glass, apply a light coat of the paint around all glass surfaces.
- As soon as the glass is well coated and while still wet, lightly mist the painted surface with the vinegar and water solution. The mixture will react with the paint to create a speckled, mercury-glass patina.
- Repeat on each of the remaining glass pieces and allow all to dry for approximately 10 minutes.
- To protect the mercury-glass paint finish, apply a light coating of 2X Ultra Cover to all of the glass, allowing it to dry, before placing on display. **OH**



Fine Furnishings & Gifts

Downtown Kincardine & Hanover



J'Adorn is proud to be a stockist for Chalk Paint™ decorative paints by Annie Sloan.



We run workshops year-round. Join us for a fun, informative, hands-on class and learn the secrets to creating beautiful finishes.

Check our website or Facebook page for schedules.

Please visit anniesloan.com to find a retailer near you.



NEW!
Annie Sloan kits available (Oh, ask!)



CANADIAN GIFT ASSOCIATION.

RETAILER OF DISTINCTION

2015

www.JADORN.ca

Timeless Design



The Fyre Place & Patio Shop *Since 1973*

Located at Highway 6 & 21, Springmount (Near Owen Sound)
519.371.2963 thefyreplace.com

finishing touch



GEO METRIC

1. AREAWARE: Table Tiles 2. DANICA STUDIO: Tessellate Tall Mug 3. MERCANA: Corbet Hanging Light Fixture 4. PRIME WALLS: Layers Intrinsic Wallcovering 5. FIRECLAY TILE: Kite Tiles in Mesolite 6. SAFAVIEH COUTURE: Evrex Barstool in Giotto Smoke 7. JAIPUR LIVING: Jada Titan Rug in Charcoal Gray & Paloma 8. ARTERIORS: Windsor Smith Ramses Bank 9. AREAWARE: Drink Rocks Shapes 10. AREAWARE: Standing Pens 11. RENWIL: Dodeca Side Table 12. RENWIL: Ellington Floor Lamp 13. ZUO MODERN: Gem Coffee Table in Stainless Steel 14. KLIPPAN: Diamonds Organic Cotton Throws OH



Smitty's
FINE
FURNITURE



For the LOVE of
CANADIAN
FURNITURE

HANOVER SHOWROOM 170-3rd Street 519-364-3800 KITCHENER SHOWROOM 170 Gateway Park Drive 519-658-9313



Living LIGHTING

LLgreybruce.ca



New Location!

1525 16th St. E
Owen Sound, ON
N4K 5N3

519-371-5645

LLgreybruce.ca
LLgreybruce@gmail.com

**Contact Nathan to discuss full
service electrical and installations!**

nathan@designelectrical.ca • 226-923-2388

ECRA/ESA Licence #7011621

