

SPRING 2018

STYLE ■ COMFORT ■ IDEAS ■ REAL ESTATE

# ourhomes

G R E Y   &   B R U C E   C O U N T I E S

## garden GETAWAY IN BEAVER VALLEY

SIMPLICITY  
WITH *Shiplap*

colour  
OF THE YEAR

HARMONIC  
HUES



MUDROOMS THAT WORK  
AGING AT HOME

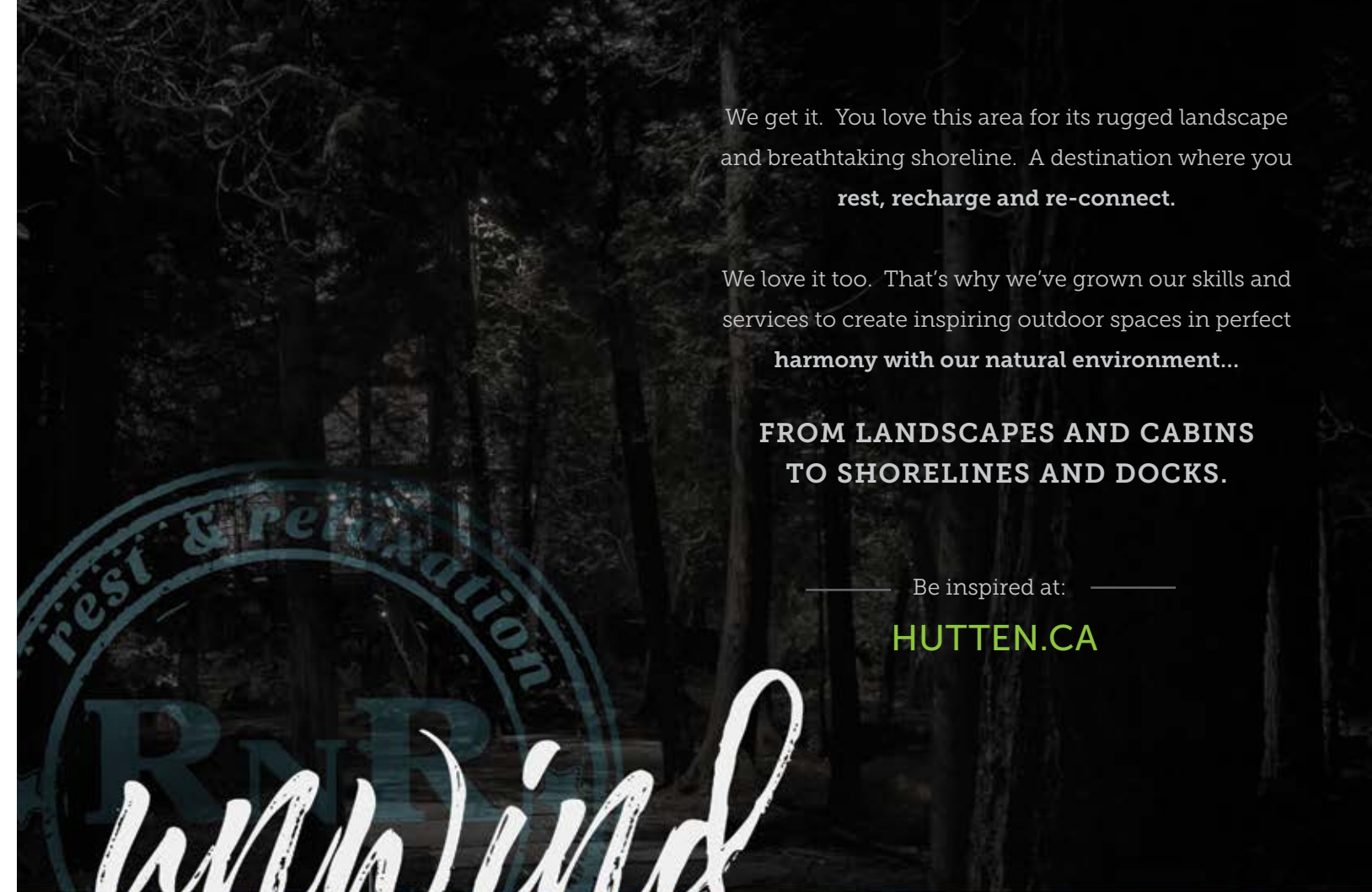




*dedication to detail*



Custom home builder  
28 years building experience in Bruce County  
www.snyderdevelopment.com  
519.389.2045  
1235 Wellington St., Port Elgin



We get it. You love this area for its rugged landscape and breathtaking shoreline. A destination where you **rest, recharge and re-connect.**

We love it too. That's why we've grown our skills and services to create inspiring outdoor spaces in perfect **harmony with our natural environment...**

**FROM LANDSCAPES AND CABINS  
TO SHORELINES AND DOCKS.**

Be inspired at: [HUTTEN.CA](http://HUTTEN.CA)



*Because natural beauty enriches lives.*

**Hutten & Co**  
LAND and SHORE



# Personalized to Perfection

EXCLUSIVELY AT DI PIETRA DESIGN



BIANO RIVIERA



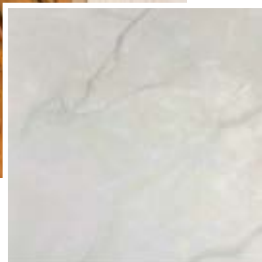
NERO COSMOS



TYPHOON BORDEAUX



WHITE ICE



ULTRA COMPACT



DI PIETRA DESIGN  
COUNTER TOPS

705.727.0096 | 672 Welham Rd - Barrie | [www.dpd360.com](http://www.dpd360.com)

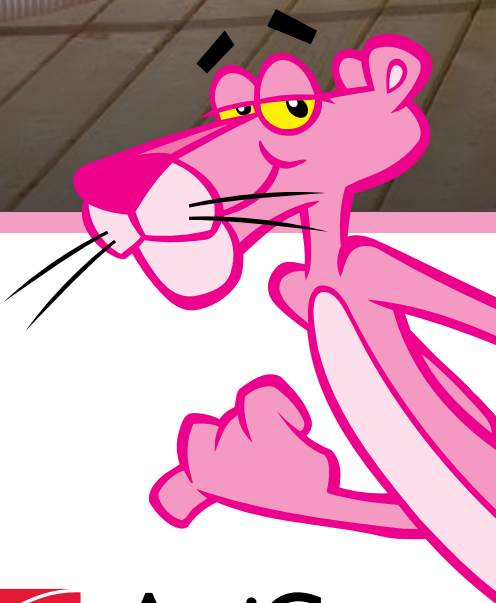


Recommended by  
Jim Caruk, Master Contractor,  
HGTV Host and Editor-in-Chief  
of Renovation Contractor Magazine

DO-IT-YOURSELF  
AND SAVE UP TO  
20% ON HEATING  
& COOLING COSTS\*

The Owens Corning™ AttiCat® Expanding Blown-In Insulation System is a quick, easy, safe and reliable system to help you take control of your home's comfort and energy usage.

- ✓ **Quick & Easy:** Complete in as little as 2 hours\*
- ✓ **Virtually No Settling:** Keeps its energy saving R-value over time
- ✓ **Virtually No Mess:** Releases and expands inside machine for low dust



THE PINK PANTHER™ & © 1964-2017 Metro-Goldwyn-Mayer Studios Inc. All Rights Reserved. The colour PINK is a registered trademark of Owens Corning. © 2017 Owens Corning. All Rights Reserved. \*Up to 20% heating and cooling savings based on Hot2000, Version 8.7 run for a 2 storey 1972 type base house with 1149 of per floor for an increase from R-8 to R-40 in the attic in Canadian climates. Savings vary depending on original amount of insulation in your home, climate, house size, air leaks, and personal energy use and living habits. \*Blowing time, based on attic size 100m²/1000 ft² at RSI 8.8/R-50.



**AttiCat**  
EXPANDING BLOWN-IN  
INSULATION SYSTEM

1-800-GET-PINK® or visit [owenscorning.ca](http://owenscorning.ca)



RICH COLOUR THAT STAYS TRUE OVER TIME



*Others pale by comparison. Aura's high quality colour and super smooth finish is simply unrivaled.*

Visit us today:

**HANOVER Cuneo's Carpet One Floor & Home**  
873 10th St | 519.364.1303 | [cuneointeriors.com](http://cuneointeriors.com)

**SOUTHAMPTON Martin's Home Hardware**  
236 High St | 519.797.3645 | [martins.ca](http://martins.ca)

**WALKERTON Cuneo Interiors**  
207 Durham Rd E | 519.881.2170 | [cuneointeriors.com](http://cuneointeriors.com)



luxurious comfort... just around the corner in Beaver Valley [cornercottage.ca](http://cornercottage.ca)





519.379.1772  
John@RockSolidLandscapes.ca

ROCKSOLIDLANDSCAPES.CA



Complete design & build landscape construction.

landscapeontario.com  
Green for Life!



TEMPUR-COOL<sup>®</sup>  
COLLECTION

TEMPUR-PEDIC<sup>®</sup>

WHY TEMPUR-PEDIC? You'll sleep better.

With an advanced 3-part cooling system that really works, a moisture-wicking fabric cover and TEMPUR-Climate™ material that dissipates heat during the night, you're sure to get the best sleep.

Available exclusively at:

Leon's Orillia: 555 Memorial Avenue, Orillia ON, 705.326.3505

Leon's Owen Sound: 1104 7th Street E, Owen Sound ON, 519.376.8394

Leon's in Collingwood: 4473 County Road 124 S, Collingwood ON, 705.445.6665





## The HOME TEAM® is Going Green

We are an approved contractor with over 50 years of experience!

By upgrading your current windows to select high-performance windows you can receive a

**\$500** **REBATE**  
**PER WINDOW**  
**UP TO** **\$5,000**

Offered by the Green Ontario Fund,  
an agency of the Government of Ontario

**Collingwood & Owen Sound**  
**www.vandolders.com 1-800-530-0735**

Add warmth & luxury  
to your outdoor space.



*Visit Chantico Fireplace Gallery – the first choice of homeowners and custom builders*

**CHANTICO**  
*fireplace gallery*

209784 Hwy. 26 | Craigeleith Ontario L9Y 0L8

Tel | 705 | 445 | 9688

Email | [admin@chanticofireplaces.com](mailto:admin@chanticofireplaces.com)

Website | [www.chanticofireplaces.com](http://www.chanticofireplaces.com)



# SOUTH-PORT

## MECHANICAL GEOTHERMAL



Mechanical



Geothermal



Plumbing



Up to **\$20,000**  
in rebates from the  
Green Ontario Fund

Up to **\$5,500** on Air to Air Heat Pumps  
& up to **\$20,000** on Geothermal



Participating Contractor in the GreenON Rebates Program offered by the Green Ontario Fund – an agency of the Government of Ontario

519-389-COOL (2665) • 519-389-HEAT (4328) • 4475 Hwy. 21, Port Elgin  
**south-portmechanical.com**



HOT TUBS

POOLS

SWIM SPAS

PATIO FURNITURE

GRILLS

## water&wellness

FINE OUTDOOR LIVING ACCESSORIES



explore your possibilities:

**waterandwellness.ca**

1 877 881 0746

*Step into relaxation*





## C A M B R I A<sup>®</sup> LIFE SIZE DESIGN



*Don't Dream too fast... take a stroll and explore.*



Discover Stunning Designs &  
Experience the Movement of  
Over 50 Cambria Quartz Slabs.

Come and visit the Slab Gallery...



## C A M B R I A<sup>®</sup> SLAB GALLERY

*elegant*solutions  
Custom Cambria Quartz Surfaces

By Appointment Only  
Elegant-Solutions.ca | 705-797-0114

Are you building, renovating or redecorating and need new countertops? Make your first stop Elegant Solutions, a certified install associate of Cambria Quartz. Book an appointment, visit their Slab Gallery and be inspired. Sales Manager Caitlin Cormier says Cambria Quartz countertops bring art, movement and colour into your space. The Slab Gallery carries more than 50 unique full-sized slabs, ranging from bold to contemporary to timeless classics. Here, you get the whole picture to understand how it will look in your kitchen or en suite. "It makes the homeowner comfortable and confident in their design choice," Cormier says.

With Cambria Quartz, what you see is what you get; unlike granite, which has a great deal of variance within and between slabs. Cambria uses quartz harvested from their Canadian mine, so each slab is 93 per cent Canadian. "Quartz is a manufactured product that offers superior durability and performance," says Cormier. "Each slab is nonporous and never requires sealing or polishing."

Contact your Kitchen Designer or Builder to book your tour today. Bring your floor plans and project selections or scroll through your designs on the video monitor. We also have a full working kitchen which displays seams, edge profiles and built in appliances.

We also utilize the space for events and presentations; stay tuned for information on our next gathering.

*elegant*solutions

12 Sarjeant Drive, Barrie | 705-797-0114



HOME & COTTAGE EXPO

**SUNSPACE**  
GREY BRUCE PATIO ENCLOSURES

**SOMETHING FOR EVERYONE**

APRIL 28<sup>TH</sup> & 29<sup>TH</sup>  
**HOMEANDCOTTAGEEXPO.COM**  
BAYSHORE COMMUNITY CENTRE, OWEN SOUND

**POSTECH**  
SCREW PILES

PERFECT FOR ANY  
CONSTRUCTION OR RENOVATION PROJECT

**STARTING OFF**  
ON A SOLID FOUNDATION

THE MOST TRUSTED SCREW  
PILE EVER DESIGNED!  
**GUARANTEED**

TO CONTACT YOUR  
**EXPERT INSTALLER**

**POSTECH GREY BRUCE**  
grey-bruce@postech-foundations.com  
519-924-0050 | postech-foundations.com

**THERMAL**  
PILES

*A smooth build from start to finish.*

**CANDUE HOMES**

- 10 Lots Left on 17th Ave A in Hanover  
Book your new house today!!
- NEW Subdivision in Walkerton!  
77 lots for sale or will build  
Custom Single Family Homes & Semi's

**Don** **Susan**

519-369-5051  
homes@canduehomes.com  
www.canduehomes.com

*Bring the natural beauty*  
**OF THE GREAT OUTDOORS**  
**INTO YOUR HOME.**

**COUNTRY CHARM**  
*mennonite furniture*

VISIT OUR SHOWROOM IN OWEN SOUND AND NOW IN MISSISSAUGA  
**WWW.CCHARM.COM 1-877-570-0933**



online

EVERY DAY ON **ourhomes.ca**



OUR inspiration becomes YOUR reality.

Home Tours, Style Ideas, Recipes & DIYs

OUR HOMES helps you find the right company in **your area** for all your homes-related needs.

*celebrating life at home*  
**ourhomes.ca**



**LivingLIGHTING**

LLgreybruce.ca

1525 16th St E, Owen Sound • 519.371.5645



1350 16th St E,  
Owen Sound ON  
www.brandrealty.group  
**226.909.2725**

So here we go... all in...

As we start this new year I'm excited to announce the launch of my signature brokerage, Brand Realty Group. To each of you who have inspired and supported me, and to my team who have been with me throughout this journey (let me first say, sorry...), I offer my sincerest gratitude and thank you all. Challenging me at every turn, while entrusting me with your business has been the greatest of compliments.

I look forward to taking this next step in my career, and appreciate your continued support as we embark on this new chapter.

Sincerely,

**Brandon Vanderschot\***

brandon@brandrealty.group

**226.923.0482**



\*Sales Representative/Owner



Are you ready for the dog days of  
**SUMMER?**



Call us for a home cooling solution  
that's just right for you.

**AIR<sup>TECH</sup>  
MECHANICAL**

HEATING • AIR CONDITIONING • VENTILATION SYSTEMS

**519-934-3358**  
117064 Grey Rd.3, Keady [www.air-tech.ca](http://www.air-tech.ca)

Energy  
Wise  
SAVINGS  
EVENT



**\$200 Rebate**  
when you purchase Duette® with PowerView® Motorization

**Décor Design**  
519-370-0770  
decordesign.ca

- Interior Design
- Custom Window Fashions
- Hunter Douglas Blinds & Shutters
- Bedding, Furniture, Accessories
- Consultations

**HunterDouglas**

Offer valid from January 1 - April 30, 2018.  
\*Purchase a minimum of 4 Duette® with PowerView® Motorization and receive a \$200 rebate and an extra \$50 for each additional shade purchased. Purchase a minimum of 4 Duette® with PowerView® Motorization and receive a \$100 rebate and an extra \$25 for each additional shade purchased. Valid at participating retailers only. The rebate will be issued in the form of a Hunter Douglas Prepaid American Express® Card. THE PROMOTION CARD is a trademark of The Hunt Group. All Rights Reserved. THE PROMOTION CARD is a Prepaid American Express® Card issued by American Bank of Canada. \*Issued by American Bank of Canada under license from American Express. For full details, visit hunterdouglas.ca.

STYLE • COMFORT • IDEAS • REAL ESTATE  
**ourhomes®**  
GREY & BRUCE COUNTIES

**REGIONAL PUBLISHER** Jamie Jefferson  
Georgette McCulloch  
**REGIONAL MANAGING EDITOR** Tamarisk McNalty Stephens  
**REGIONAL PRODUCTION MANAGER** Kelly Donaldson  
**MARKETING & ADVERTISING** Betty Ann Fawcett, 519.372.6338  
bettyann.fawcett@ourhomes.ca  
**DISTRIBUTION** Allan Fawcett, 519.986.2599

**REACH US EASILY: [firstname.lastname@ourhomes.ca](mailto:firstname.lastname@ourhomes.ca)**

OUR HOMES is a registered trademark of OUR HOMES MEDIA GROUP INC.  
OUR HOMES Grey & Bruce Counties is published four times a year.  
OUR HOMES is distributed to residents of Grey & Bruce Counties and to cottagers via direct mail. Copies of OUR HOMES are available for free pick up at high traffic locations throughout the region. Copies of OUR HOMES are also sent via direct mail to members of select ski clubs in the region. OUR HOMES is distributed throughout select B&Bs and hotels, and to select business leaders via direct mail.  
OUR HOMES Media Group Inc. is a proud member of the Owen Sound and District Chamber of Commerce.  
Please send all letters and/or feedback to OUR HOMES Magazine, 25 Elgin St., Collingwood, Ontario, Canada L9Y 3L6. Or email us at [editor@ourhomes.ca](mailto:editor@ourhomes.ca).  
All letters received are subject to editing for grammar and length.

**OUR HOMES MEDIA GROUP INC:**

<b>EDITORIAL</b>	<b>PRODUCTION</b>
<b>EDITOR-IN-CHIEF</b> Georgette McCulloch	<b>PRODUCTION DIRECTOR</b> Lynn Derrick
<b>ASSOCIATE &amp; WEB EDITOR</b> Laurel Fortin	<b>PRODUCTION MANAGERS</b> Julia Dempsey, Kelly Donaldson, Marilyn Reid, Tracy Shuttleworth
<b>MANAGING EDITORS</b> Nancy Belgue, Adrienne Brown, Laurel Fortin, Walter Franczyk, Mary Hatt, Gina Makkar, Tiffany Mayer, Georgette McCulloch, Tamarisk McNalty Stephens, Melissa North, Merrilyn Patterson, Diane Sawchuk	<b>OPERATIONS</b> <b>MANAGING DIRECTOR, SALES &amp; MARKETING</b> Jamie Jefferson <a href="mailto:jamie.jefferson@ourhomes.ca">jamie.jefferson@ourhomes.ca</a> <b>MANAGING DIRECTOR, OPERATIONS</b> Georgette McCulloch
<b>ART</b>	<b>CLIENT RETENTION &amp; DISTRIBUTION</b> Lisa Merrell
<b>ART DIRECTOR</b> Tara Chattell	<b>ACCOUNTING</b> Donna Duggan
<b>ASSOCIATE ART DIRECTORS</b> Sheila Britton, Robynne Sangiuliano	<b>ACCOUNTS RECEIVABLE</b> Tyler Annette
<b>DIRECTOR OF PHOTOGRAPHY</b> Jason Hartog	

**CONTRIBUTORS**

Sheila Britton, Neeto Da Silva, Walter Franczyk, Jason Hartog, Sandy MacKay, Emil Makkar, Jenelle McCulloch, Tamarisk McNalty Stephens, Dolores Pian, Melanie Rekola, Mehreen Shahid, Yanic Simard, Sarah Sloan, Sarah Tacoma

**Advertisements and the content**, including photos, of advertisements published within OUR HOMES magazine are supplied solely by the advertiser and neither the publisher nor OUR HOMES Media Group Inc. accept responsibility for opinions expressed in advertisements or for copyright issues with regards to photos, advertising copy and advertisements, nor shall they be held liable thereby. By act of reading this publication, all advertisers and readers agree to indemnify and hold harmless both OUR HOMES Media Group Inc., and the publisher thereby. Copyright ©2018 OUR HOMES Media Group Inc. All rights reserved. Reproduction without permission is prohibited.

**OUR HOMES CAN BE FOUND IN THE FOLLOWING MARKETS:**  
• Barrie/Ontario/Midland • Grey Bruce • Hamilton • London • Muskoka  
• Niagara • Oakville/Burlington/Mississauga • Ottawa • Peterborough  
• Southern Georgian Bay • Toronto & York Region • Region of Waterloo  
• Wellington County/Orangeville/Caledon • Windsor



PROUD  
**SUPPORTER**  
Nature Conservancy of Canada™

An Amazing Selection of TRUE Fitness Treadmills, Ellipticals and Bikes on display in our 10,000 Sq. Ft. Fitness and Wellness Superstore in Fergus, ON.

**COME ON IN, TRY THEM OUT, & BE IMPRESSED!**



Why would I want to buy a quality Cardiovascular product?

- Healthier Heart Function
- Less Fat / More Muscle
- Flexible Body
- Fountain Of Youth!



**COUPON**

**Present this coupon when purchasing any product over \$1,500 and**

**Receive a \$500 GIFT CARD!\***

\*To be used towards the next product purchased, or given as a gift for family, friends and loved ones.  
Only one coupon per product. Valid until May 31st, 2018.

[www.leggefitness.com](http://www.leggefitness.com)

1-800-695-7338 • [info@leggefitness.com](mailto:info@leggefitness.com)

105 Queen St. W., Fergus • 519-787-7498 • Retail Hours: ONLY Saturday & Sunday 10:00 – 5:00  
202 Main St. W., Listowel • 519-291-5987 • Retail Hours: Wednesday, Thursday, Saturday 9:00 – 6:00, Friday 9:00 – 8:00





Original Fine Art Photography  
by award winning photographer  
**CAROL A. NORRIS**

Custom sized frameless acrylics or custom framed  
to suit your home, cottage or office.

One-of-a-kind home décor pieces including  
“live edge” tables, benches, ceramics and jewellery.

173 High Street Southampton  
1.855.797.1485  
carolnorrisphotography.com

## editor's note



**IT'S FUNNY WHAT LIVING IN A SMALL,** inadequately insulated and non-ventilated cabin will do to you: it has made me very realistic about what I actually need in a new home. My husband Greg and I have been making do with the cabin that's been our home for the last four-and-a-half years, and this spring, we are finally well on our way to building our new forever home.

Four things that cabin living has made me look forward to in our new home:

1. At least 24 inches on each side of the bed.
2. An exhaust hood (so that I do not smell last night's cooking on, well, just about everything).
3. A warm floor.
4. A real connection inside and out to the landscape (after all, the land is the reason we fell in love with this place).

Cabin living has also made us realize what we can live without:

1. A basement (we've been living without one for this long, which means we probably don't need one and besides, in our last house it just collected junk).
2. An en suite and attached garage. Would they be nice? Of course, but definitely not necessary, at least not for us.

But the most important thing we've discovered is that while a new house will be wonderful, we are also mindful that it comes with a price tag – and we don't want that price to inhibit our ability to enjoy and experience the fun things in life. A house that is well insulated, has room to easily make the beds and a good ventilation system are the priorities, the rest is just luxury.

And hey, this is coming from an interior designer. If you asked me what I wanted in a new home four-and-a-half years ago, my list would look a lot different than it does today. So grateful for our time in the cabin and looking forward to all that awaits.

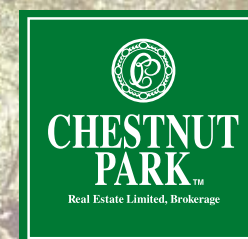
Cheers to spring,

*Tamarisk McNalty Stephens*

Tamarisk McNalty Stephens, Managing Editor  
tamarisk.mcnalystephens@ourhomes.ca

Follow us    Subscriptions [subscribe@ourhomes.ca](mailto:subscribe@ourhomes.ca)

**online** Get more at [ourhomes.ca](http://ourhomes.ca)



**CHRISTIE'S**  
INTERNATIONAL REAL ESTATE

## Great homes. Great lifestyles.

Visit us at the Cottage Life Show in Toronto March 22-25  
and the Owen Sound Home & Cottage Expo April 28-29

[www.chestnutpark.com](http://www.chestnutpark.com)

**CHESTNUT PARK REAL ESTATE LIMITED, BROKERAGE**

Owen Sound | 957 4th Avenue East, Suite 200 N4K 2N9 | 519.371.5455 | [owensound@chestnutpark.com](mailto:owensound@chestnutpark.com)  
Warton | 551 Berford Street N0H 2T0 | 519.534.5757 | [warton@chestnutpark.com](mailto:warton@chestnutpark.com)  
Collingwood | 393 First Street, Suite 100 L9Y 1B3 | 705.445.5454 | [collingwood@chestnutpark.com](mailto:collingwood@chestnutpark.com)



# CONTENTS

## SPRING 2018



40



90



60

### ON THE COVER

A rural garden escape outside of Markdale. Story, page 60. Photography by Sandy MacKay.



56



28

### LOCAL FEATURES

- 28 Style Picks** Gearing up for life on the patio.
- 40 Home & Builder** This passive house minimizes a growing family's footprint.
- 56 Spotlight** Peninsula Out of Doors welcomes another busy growing season.
- 60 Feature Home** Walk the garden paths at Froggies Song.
- 70 People** Local professionals make outdoor living a breeze.
- 90 Feature Home** A serene palette inspired by the view in Mildmay.

### DEPARTMENTS

- 22 Editor's Note**
- 26 Advice** Staying Organized
- 32 Good Taste** Peach Mimosas
- 34 Crafty Ideas** Gettin' Twiggy With It
- 36 Design Ideas** Mudrooms
- 50 Gardening** Growing Success
- 54 Real Estate** Aging At Home
- 82 Green Living** Passive Houses
- 84 Design Ideas** Reno Timelines
- 86 Focus** Pantone Colour of the Year
- 88 Double Take** Create The Right Mix
- 104 Cooking At Home** Blackberry Shortcake
- 106 Home Resource Directory**
- 108 Crafty Ideas** Planter Box Ladder
- 112 Entertaining** Gather Outside
- 114 Finishing Touch** Chalkboard Serving Trays

# & quality workmanship customer satisfaction



Photos courtesy of Bruce County Custom Cabinets



## THE OLD BARN

### POLISHED STONE CREATIONS

Your local source for Granite, Marble & Quartz Countertops



14 Celebrating  
years  
of business excellence!

173480 Mulock Road (between Durham & Hanover) 519.369.1710 theoldbarngranite.ca





**In-home  
Consultations**

Icons: Bed, Lamp, Chair, Washing Machine

**Macdonald's**  
Furniture & Appliances

Meaford  
800-265-3172  
macdonaldsfurniture.com

advice

# STAYING ORGANIZED

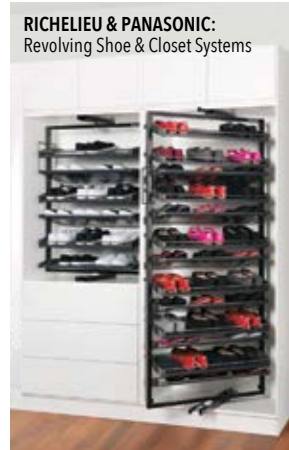
AND OTHER WAYS TO KEEP IT TOGETHER

Interior Designer **Dolores Pian** shares her ideas.



Feeling stressed because you're surrounded by stuff? That stuff can actually make you happy, if it's efficiently and artistically displayed. And when organized properly, you can grab and go. Technology has helped reduce or eliminate the need for some stuff, like books and record albums, but we still need to store the items we do collect.

Storage, home organization or space solutions – whatever you call it – has become a science using the latest technology. For example, hardware supplier Richelieu has teamed up with Panasonic to create revolving closet systems and shelves that pull down and return pneumatically, providing innovative ways to make our lives easier.



## START RIGHT – GET ORGANIZED

Whether you're living in a tiny studio or a mansion, many of the same rules apply when it comes to getting organized:

**Purge:** Get rid of things you don't need or that don't give you pleasure in some way.

**Learn to make sacrifices:** In a small or large space, every object matters. Make choices and focus on priorities.

**Inventory items that need storage and display:** Determine what type of storage or shelving you need. Make this scientific by calculating how much linear space and square footage is required.

**Design and plan:** Plan where these items are going and then find the design solutions you need to maximize and beautify your space.

## DIVIDE AND CONQUER

Storage is designed in three style categories:

### 1. In sight and in mind.

Open shelving allows us to see what we own, defining our unique personalities. Free-standing or bolted to the wall, shelving is simple. The structure itself can be a design feature, elevating your simple objects into things of beauty.



### 2. Out of sight and out of mind.

Closets or storage rooms are enclosed empty spaces. You can add rods or shelving to suit your requirements. People are now choosing to turn closets into dressing rooms, enclosing items in cabinetry and revealing only what's most precious and notable through glass cabinets. If you own shoes, purses, belts or ties that are beautiful and cost a pretty penny, then why not put them on display like an art object in a glass case?

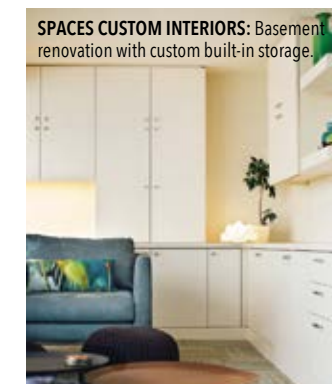
### 3. Combining in and out of sight.

Say we've opted for open-plan spaces instead of separate rooms for our functions. Even kitchens are now blended in, requiring special thinking on how to manage all its requirements. While one-room living reveals all, do we really want to show off everything?

Storage credenzas, shelving and wall units can act as free-standing room dividers to delineate space. One company that provides unique items is Design Within Reach (DWR). It is a go-to destination for design sophisticates. Their variety of cabinets and shelving units are real designer heirloom classics that can make space efficient and extra special.

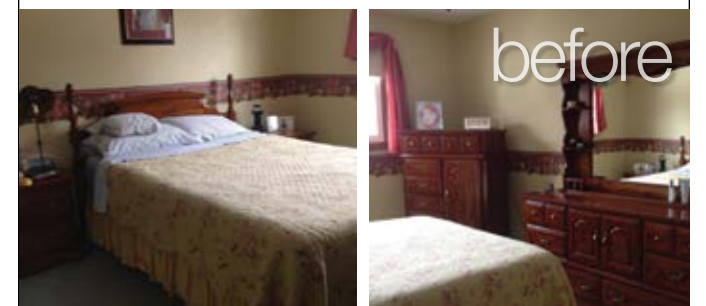
## CUSTOM VS. STANDARD

Each home is unique, not only in structure, but also in the personality and vision of its owner. While standard shelving and storage units are available at most home stores, and while you can hack Ikea, it is best to give your storage needs the attention they deserve.



Investing in custom built-in storage solutions will enhance the value of your house, much like investing in kitchen or bathroom renovations. It is money well spent. Knowing that everything is in its place and there's a place for everything helps liberate us from our stuff. **OH**

**CR Designs**  
INTERIOR DESIGNS



@ f in  
**crinteriordesigns.com**  
**519-797-3821**



1



2



3



# LIVE LIFE OUTDOORS

Enjoy the season of outdoor living and entertaining.

PHOTOGRAPHY SARAH TACOMA



4



5



6

**1 CHANTICO FIREPLACE GALLERY**

**Fire Pit**  
Create a focal point for memory making around a lightweight concrete fire pit by Dekko. Choose from various colour and rock options. Made in Ontario.  
209784 Hwy. 26, Craigleith  
705.445.9688 | chanticofireplaces.com

**2 LEON'S**

**Lounger**  
An inviting and oversized, comfortable outdoor lounger with retractable sunshade offers a great place to relax by the pool, take in the view or curl up for an afternoon nap.  
1104 7th St. E., Owen Sound  
519.376.8394 | leons.ca

**3 THE RUSTY STAR**

**Welcome Mats**  
Catch the sand or grass clippings at the door with these fun welcome mats in fresh designs and soft spring colours.  
408065 Grey Rd. 4, Maxwell  
519.922.2010 | therustystar.ca

**4 HOUSE RULES DESIGN SHOP**

**Outdoor Lighting**  
Take the elements of interior design to the outside of your home with this set of wicker shade pendant lights for a laid-back, casual feel for your patio, porch or gazebo.  
13555 Bruce Rd. 10, Hanover  
226.434.1234 | houserulesdesign.com

**5 THE FYRE PLACE & PATIO SHOP**

**Swivel Chair**  
The modern styling of this swivel chair combined with ultimate deep-seat comfort equals a design win for outdoor furniture.  
717861 Hwy. 6, Owen Sound (Springmount)  
519.371.2963 | thefyreplace.com

**6 PELLOW PHARMASAVE**

**Tray & Bowls**  
Leave the breakable dishes inside and opt for this decorative and functional tin serving tray and bowl set. Perfect for serving watermelon and munchies on the patio.  
232 Durham St. E., Walkerton  
519.881.0151 | pellowpharmasave.com

Continued on page 30





7



8



9

7 WILSON SOLUTIONS

**Garage Storage**  
Clear the floor and organize your garage with slatwall or gridwall customized to your storage needs by adding baskets, hooks, tool holders, bins and sports racks.  
402505 Grey Rd. 4, Hanover  
519.369.8225 | wilsonsolutions.ca

8 MAXWELL GARDEN CENTER

**Sauna**  
Relax, renew and enjoy the benefits of a sauna experience in your own backyard. Clad in western red cedar siding.  
453897 Grey Rd. 2, Maxwell  
1.844.564.0224 | maxwellgardencenter.com

9 HOME HARDWARE

**Barbecue**  
Who doesn't love a meal fresh from the grill? Take the cooking outside for the warmer months with a new sleek and stylish Broil King Barbecue.  
Your local Home Hardware  
homehardware.ca OH

# Inside Ideas

829 2nd Avenue East, Owen Sound 519.371.6926  
www.insideideas.ca

# The Rusty Star

Solid Wood Mennonite Furniture & Country Home Decor

LOCATED AT GREY RD. 4 MAXWELL

www.therustystar.ca | (519)-922-2010 | therustystar@live.com

Hours: Mon-Fri: 9:00 am - 5:30 pm  
Sat: 9:00 am - 5:00 pm (Closed Sundays)

# Undeniable Quality & Comfort

Made in U.S.A.  
TELESCOPE CASUAL FURNITURE

## The Fyre Place & Patio Shop

Since 1973

Located at Highway 6 & 21, Springmount (Near Owen Sound)  
519.371.2963 | www.thefyreplace.com

# Pellow

## PHARMASAVE

GIFTS, HOME DÉCOR & MORE!

232 Durham St., Walkerton, ON  
519.881.0151 pellowpharmasave.com



good taste

online Get more recipes at  
ourhomes.ca/mag/cook

# Poached Peach MIMOSAS

The mimosa is a staple of every brunch, traditionally made with sparkling wine and orange juice. This recipe uses poached peaches for a refreshing twist.

RECIPE AND PHOTOGRAPHY  
JENELLE MCCULLOCH

## INGREDIENTS

- 2 cups water
- ¼ cup granulated sugar
- ¼ cup honey
- 2-3 peaches, halved and pitted
- Sparkling wine

## DIRECTIONS

Combine water, sugar and honey in a saucepan over medium heat. Stir until sugar and honey are dissolved. Add peach halves and simmer for 5-10 minutes, turning until tender. Remove peaches and reduce poaching liquid by half. Put peaches in a small, sturdy bowl and reserve liquid in a separate bowl. Cool both.

Using a muddler or the back of a spoon, press peaches against the side of the bowl. Press hard and twist. The goal is to break up the fruit, release liquid and intensify the flavour. Add a dollop of muddled peaches to champagne glasses, then add a ½ tsp of poaching liquid to each glass. Top with sparkling wine. **OH**



**NEW!** Environmentally safe dry ice blasting for removing old coatings from interior and exterior wood.

Log home maintenance | Deck refinishing  
Brick cleaning and sealing | Interior and exterior painting  
Hot water and steam cleaning for dirt and mildew  
Removing efflorescence from brick and masonry



104 Shane St., Unit 2B  
Springmount Industrial Park  
Owen Sound  
**Call for Free Estimates**  
**519-372-1221**  
www.customsoda.ca  
ecostore@customsoda.ca



## What is Dry Ice Blasting?

**DRY ICE BLASTING** uses soft dry ice, accelerated at supersonic speeds, and creates mini-explosions on the surface to lift the undesirable item off the underlying substrate, instead of using hard abrasive media to grind on a surface and ultimately damaging it. **DRY ICE BLASTING** is a food grade cleaning system and leaves no blast media residue. **DRY ICE BLASTING** is efficient, cost-effective and environmentally friendly.



**Log Maintenance | Historic Restoration**  
**Graffiti Removal | Brick Cleaning**

Offering a full line of painting & finishing services.  
**Serving Ontario's Cleaning Needs**

**519-378-3590 | info@tntdryice.com**

**The Paint & Woodcare Co.**

Specializing in Log Home Maintenance and Wood Preservation



Online Store  
Log Home Maintenance  
Deck Refinishing  
Brick Cleaning  
Interior/Exterior Painting

Hot Water & Steam Cleaning  
Historic Renovation  
Dry Ice Blasting  
Graffiti Removal  
Store Front

104 Shane St. Owen Sound  
519-372-1221 519-378-3590

**paintwoodcare.com**

ecostore@customsoda.ca

info@tntdryice.com



# Gettin’ TWIGGY with it



PROJECT AND PHOTOGRAPHY **WALTER FRANCZYK**

Stanley Marshall makes amazing things from a pile of sticks. He crafts furniture and lighting in the Adirondack style and sells his creations at Rustix, his custom rustic furnishings store in Muskoka. If you’ve ever wanted to make a rustic sign for your home or cottage Stanley shows how it’s done.

## TOOLS & MATERIALS

- Pine boards
- Band saw or jig saw, optional
- Paint (3 colours)
- Paintbrush
- Sandpaper or orbital sander
- Briwax
- Wax brush
- Steel wool
- Tracing paper
- Pencil

- Prismacolor pencil, white
- Pruning shears
- Fresh dogwood stems, thickness of a pencil
- Alder stems, one-inch thick
- ¾-inch finishing nails or nailing gun
- Finishing detail such as pine cones, metal leaves, tiny paddles or decorative twigs
- Glue
- 2 Metal eyelets
- Hanging chain

## HOW-TO

**1 CUT & PAINT BANNERS**  
With a band saw or jig saw, cut and shape pine boards wide enough to serve as banners for the sign’s lettering. Paint the banners. When dry, give them a distressed look with sandpaper or an orbital sander.



**2 APPLY AGING FINISH**  
Give the banners an aged look by applying Briwax, a mixture of carnauba wax, beeswax and stain. Smooth the wax finish with steel wool.



**3 MAKE TWIG BASE**  
Cut and nail alder stems in a V-shape with an upper crosspiece extending almost two inches on either side of the V. This will serve as the base for the sign. Position your banners and nail them to the base.



**4 DRAW LETTERING**  
Make a stencil for your sign by sketching lettering on tracing paper. Rub a white Prismacolor pencil on the back of the stencil lettering. Lay the stencil right side up on the wooden banner and trace over the letters. The white pencil marks will transfer the lettering to the wood.



**5 MAKE TWIG LETTERS**  
Using pruners, cut dogwood stems to length to spell out the letters. Cut at a 45-degree angle to shape corners. Paint the letters white. Use a nail gun to secure the pieces to the stencil on the banners.



**6 ADD FINISHING TOUCHES**  
Try slicing pine cones in half and gluing or nailing them at the ends of the banner, or apply tiny metal maple leaves, mini crossed paddles or decorative twigs.

**7 HANG**  
Screw metal eyelets into the ends of the crosspiece and connect a chain on which to hang the sign. Enjoy. **OH**

## BUY DIRECT FROM THE SAWMILL!



- BUYER OF STANDING TIMBER
- ALL DECKING MATERIALS
- BOARD & BATTEN ■ POST & BEAM
- WHITE PINE FLOORING ■ T&G SIDING

High Quality: White Pine, Red Pine, Cedar, Hemlock  
1" Boards - 2" Dimension; 4" and 6" Squares

CALL FOR QUOTE  
**MOGGIE VALLEY TIMBER INC.**  
684063 Sideroad 30, Holland Centre, ON  
**519-794-0018**  
moggievalley@gmail.com  
Mon - Thurs - 7:30am to 5:30pm  
Friday - 7:30am to 12:30pm

Whirlpool  
HOME APPLIANCES

SERVING THE AREA FOR OVER 60 YEARS

**SQUARE DEAL NEIL'S**

TV AND APPLIANCES

**SALES & SERVICE • NEW & USED**

Hwy 21, Southampton 519-797-3905 sinclairtv@bmts.com www.squaredealneils.ca  
Large enough to serve you, small enough to care!

See you at the  
**7th Annual  
Rotary Home  
& Recreation  
Show**  
April 7th & 8th, 2018  
Southampton  
Coliseum

simply  
yours  
to explore.

**MULCH-IT**  
Specialized Land Clearing  
Trail Creation & Land Management  
mulch-it.ca 519-376-0002



STORY **TAMARISK MCNALTY STEPHENS**

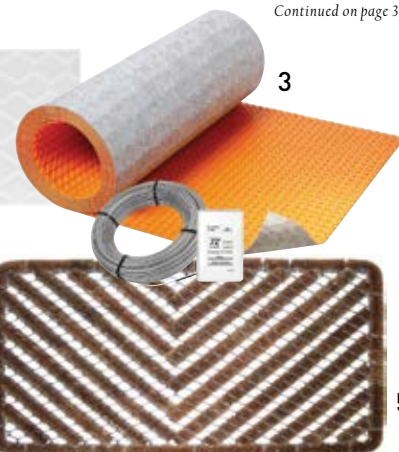
# the MIGHTY MUDROOM

Durable paint in a darker colour will help keep painted surfaces looking great longer.



2

4



This durable, washable, scrubbable rug is perfect for high-traffic areas.

Often located adjacent to the garage, the mudroom can become the primary entrance in many homes and is a high-traffic area. It's the last place you see when you head out for the day and the first space that greets you when you return (and perhaps the first space guests will see as well). Therefore, the mudroom should be designed with the utmost utility in mind to meet the specific needs and requirements of your household. Walking in and out of a tidy, organized and functional space creates a welcoming and comforting environment that can help calm your nerves and reduce stress.

Whether you're redesigning your current space or starting from scratch, here are some considerations when designing a mudroom:

## MATERIALS

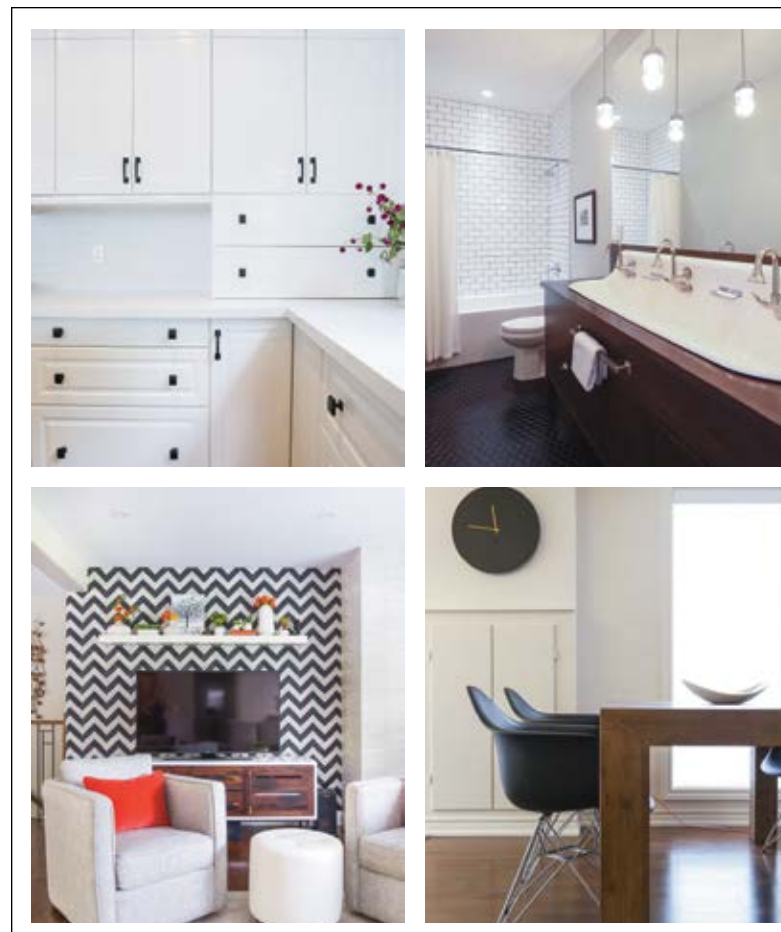
As the name suggests, the space should be designed with durable materials and finishes that can withstand the dirt, mud and snow. A non-porous hard floor surface, such as porcelain or luxury vinyl tile, is easy to mop and requires minimal maintenance. Just avoid light-coloured grout.

Consider hard-wearing wall finishes (the matte paint trend is not suitable for the mudroom). Wall tile, wood panelling and many wallcoverings are resilient and easy to wipe.

Be mindful of uneven surfaces and heavy textures where dust and dirt can settle and become difficult to clean.

Radiant floor heat is worth the investment in the mudroom as it helps to keep the space warm and dry in the cool, damp months and is a welcome treat for cold toes.

*Continued on page 38*



## TOO MANY DECISIONS? I'M HERE TO HELP

Together, we'll create a space you love coming home to.

Call or email to book your consultation.

tamarisk  
INTERIOR DESIGN

tamariskinteriordesign.com  
info@tamariskinteriordesign.com  
519-477-1833

The kitchen might be the hardest working space in the house, but the mudroom comes in a close second. So it's no surprise that mudroom design is receiving more attention and the room itself more square footage than ever before.

Mudrooms are multifunctional spaces. In addition to storing a household's shoes, boots, coats, mitts, hats, umbrellas, purses, backpacks, keys and sports gear, it is frequently also the mail drop, home to the family calendar, pantry, housekeeping or laundry space, and often the spot for a family pet's crate, food and litter. It truly is a hard-working space!



## Premier Industrial Painting



Media Blasting | Staining  
Chinking | Sealing  
Painting | Insect Control

Call us today for a free estimate!

Office: 519.506.3735

Cell: 226.668.5918

premier@wightman.ca

premierindustrialpainting.ca





## STORAGE

Consider where shoes, boots, coats and mitts will be stored both in season and off season. Do you prefer visible hooks for coats and open cubbies for boots or do you prefer them hidden behind closed doors? Incorporating a bench or form of seating is helpful for people of all ages when it comes to footwear.

Individual storage cubbies have become popular and their ease of access allows everyone to be responsible for placing their stuff in its designated location.

A combination of open and closed storage helps minimize visual clutter while providing an opportunity to express your individual style through cabinetry, hooks, hardware, bins and baskets.

## EXTRAS

If you're an active individual or household, be sure to designate space to accommodate the gear for various sports and outdoor activities.

Avid gardeners can incorporate sufficient counter space to pot, prune and care for plants and start spring vegetables. A small, deep, wash-up sink can be handy to rinse fresh garden produce and to clean hard-working hands straight from the shop or barn.

Do you struggle with muddy paws after walks with your dog? Pet showers are becoming a more popular request when sufficient space is available. They help contain the mess so it doesn't get tracked throughout your home, and can also be handy to fill the mop bucket or rinse boots.



A docking station for mobile phones can be a great addition to the space as more people try to successfully balance the demands of work and home life. The idea is to leave your phone in a specific location instead of continually by your side, which can allow you to be less distracted and more focused on the present moment.

Be sure to consider the vantage point from adjoining spaces and decide what you don't mind on display and what you'd prefer hidden from view. Pocket or barn-style doors are a good option that don't take up valuable floor space like a door swing.

Although functionality and practicality are the focus of the mudroom, it is also another space where you can express your unique style and design sensibility. Be creative and have fun with it! **OH**

1. **BENJAMIN MOORE:** Aura Paint in Sharkskin 2139-30
2. **BRITISH CERAMIC TILE:** Definitions Zig Zag Wall Tile
3. **SCHLUTER SYSTEMS:** Ditra-Heat Floor Warming System
4. **DASH & ALBERT:** Cameroon Indoor/Outdoor Rug
5. **FLOOR CARE CARPETS:** Boot Scraper Mat
6. **CRATE & BARREL:** Aspect Walnut Sliding Door Bench with Cushion
7. **INDIGO:** Umbra Leaner Coat and Shoe Rack
8. **INDIGO:** Charcoal Felt Basket - Large
9. **INDIGO:** Click & Grow Smart Garden with 3 Basil Plants
10. **DELTA:** Trinsic Single Handle Pull-Down Bar/Prep Faucet in Matte Black
11. **BLANCO:** Quatrus R15 Laundry Sink
12. **PINE CONE HILL:** Trimaran Stripe Graphite/Ivory Indoor Outdoor Wouf
13. **POTTERY BARN:** Cambria Pet Bowl & Stand

# Great Lakes Custom Homes & Renovations



*We build excitement!*

**Your Premier Custom Home Builder in Grey Bruce**

Robert Abbott, Owner

5 Wellington St. East, Creemore, ON | 705.446.4831 | [greatlakescustomhomes.ca](http://greatlakescustomhomes.ca)



TIMELESS  
INSPIRATION

Art in stone has a long and venerable reputation for arousing awe and stirring emotions. Beauty and longevity memorably command our attention and respect.

Our extensive range of styles and colours will appeal to your inner artist or connoisseur as you are inspired to create timeless memories in and outside of your home. From modern and contemporary to classic or functional, style need be no barrier to your expressive legacy.

**The natural choice in stone**

[www.shouldice.ca](http://www.shouldice.ca) | 877.265.6696



STORY **TAMARISK MCNALT** STEPHENS  
PHOTOGRAPHY **SANDY MACKAY**



# the SCIENCE OF BUILDING

It's good to stand out in your field – or in your neighbourhood – and it's definitely the disruption to a rhythm that urges you to take a second glance when driving along a lovely tree-lined street in Port Elgin.

This 2,356 sq. ft. two-storey home is influenced by contemporary design elements but remains timeless with its simple and classic rectangular shape and Georgian proportions. The goal was to construct a house using modern-day building science that would meet the requirements of a growing family while minimizing the overall footprint.

**Dennison Homes** began when **Steve Dennison**, who has a background in engineering, and his wife Jennifer Haessler, a practicing naturopathic doctor, decided to make the move to Saugeen Shores in 2003. The company built their first home in 2005 and the business –

*Continued on page 43*



**TOP:** The kitchen, dining and family room with south-facing windows open onto the deck and backyard. **ABOVE:** The large scale custom barn door makes a statement in the front foyer. **OPPOSITE:** The family's 11-year-old Labradoodle Cooper relaxes by the fire on a brightly coloured, vintage inspired rug that defines the living area. Builder and owner Steve Dennison custom made the coffee table from an old piece of mahogany burl.



**RIGHT:** Kaitlyn Shular of K-Interiors was instrumental in the cabinetry design throughout the home. **BELOW:** Aside from some drywall and wall tile in the bathrooms, the walls throughout are clad in white and bright shiplap. **OPPOSITE, TOP:** Fun, geometric drop pendant lights punctuate the two-tone kitchen cabinetry. Appliances sourced at Square Deal Neil's. Counters and sinks from The Old Barn. **BOTTOM RIGHT:** Owners Steve Dennison and Jennifer Haessler at the kitchen island.



Sturdy see-through drawers make pantry items easy to find.

along with Dennison and Haessler's family – has grown steadily since then. When they learned they'd be welcoming their fourth child in 2017, they decided additional space would help make daily life function more smoothly as a family of six, so they purchased a vacant lot nearby and began planning their new build. "This is the third iteration of a similar house we have built for ourselves," explains Dennison. Although the floor plan remains very similar to the previous layouts, the needs of a larger family meant the common family areas were expanded ever so slightly and an additional bedroom was added.

They were able to make the house as bright as possible with an expanse of south-facing windows and doors that open up to the backyard. The living areas were designed to fit their furniture and for efficient storage they incorporated a lot of built-in cabinetry – each unit with a specific use in mind. For example, the mudroom is the central organization point of the home and everyone has a dedicated drawer and hook space within reach so that their belongings can be easily accessed and

Continued on page 44







**TOP LEFT:** The second floor laundry room has fresh blue cabinets and ample space for folding clothes. **ABOVE:** The kids' bathroom has a nautical vibe with a round chrome mirror, blue vanity and water-resistant subway tile on the walls. **ABOVE RIGHT:** Off the living room on the main level is a play room office combination (the time of day dictates how much work gets accomplished!).



put away at the end of the day. In other areas there are drawers for arts and crafts, shelves and cubbies for books and toys, display for collectibles, and in the kitchen the kids can help set the table as their dishware is stowed in a lower drawer.

The built-ins throughout showcase the fine quality and craftsmanship of **Bruce County Custom Cabinets**, a company

Steve owns with partners **Larry Lange** and **Kaitlyn Shular**. Together with **K-Interiors** (the interior design company Shular started after graduating college in 2011) and Dennison Homes, the three businesses share a showroom and form a complete design-build firm. This partnership means the team can design and build a house, select interior finishes, design the cabinets as well as provide decorating



The mudroom is a high functioning space with drawers, hooks and cubbies for each family member. **TOP RIGHT:** A floating vanity in the main floor powder room allows a step stool to be tucked underneath so that little people can wash up. **BOTTOM RIGHT:** The white palette keeps the stairwell bright while visual interest abounds with the oak stair case, carpet treads, shiplap, square panel trim, accent wall sconces and art accents.



services, all from one related company. “By managing the entire process, we can streamline communication and limit mistakes and omissions,” Dennison says. “We can also adjust the design so that it better reflects the final product by having the designer work directly with the trades constructing the house and building the cabinets.”

Shular and her design team of **Amanda**

**Thede** and **Tanya Tsatsos**, worked directly with Haessler to help her make all of the decisions related to interior materials, finishes, cabinetry design and other unique details throughout the home.

The primary design feature is the shiplap that clads nearly every wall in the house. Painted in **Benjamin Moore**’s Simply White, the textural quality of the shiplap adds a fine

layer of detail within the all-white palette and was the inspiration for the design elements throughout the rest of the house. The live-edge walnut table from **Country Charm**, with the reclaimed walnut detail on the ceiling above, helps to anchor and define the dining area in the open-concept space. The built-in cabinetry in the living area flanks the electric fireplace, complete with walnut mantel and

*Continued on page 46*





**ABOVE:** The shiplap in the principal suite is accented with a colourful piece of art above the bed by local artist Susan Seitz. **TOP RIGHT:** The en suite is a little oasis complete with freestanding soaker tub and fully tiled walk-in shower. Plumbing by Carson Supply. **RIGHT:** Family portraits and art by Haessler's aunt and Opa adorn the walls in the hall. At the end of the hallway near the ceiling is the Mr. Slim that provides heat and air conditioning to the second floor.



antique brick surround (**West Shore Stone & Brick Inc.**). Another feature is the extra-large, distressed wood, barn-style door (**Disla Designs**) that conceals the cloak closet at the front foyer. Haessler loves the colour red, which is the primary accent throughout the home, beginning with a bright pop of red on the front door – a welcome contrast against the horizontal white wood siding.

Dennison admits that he didn't always put much focus on getting assistance from interior design professionals, as he believed it was the architecture or the trim that made the house. But tying together all of the elements throughout their new home has taught him otherwise, and he has a newfound respect and value for the detail-oriented job of a designer.

In addition to the savvy interior design, this house was constructed to meet the Passive House Standards. Dennison has a keen interest in focusing on high performance buildings and explains, "The basic premise of a Passive House is as follows: simplify the form so that the building is easy to construct and maintain; build an air-tight building shell to avoid drafts; use exterior insulation, triple pane windows, and a well-insulated basement to enclose the house in insulation and eliminate thermal bridging; provide efficient air exchange for fresh air and moisture removal (essential because the house

*Continued on page 48*

## DESIGN BUILD LOVE



**Bruce County** CUSTOM CABINETS

519.483.1188  
brucecountycustomcabinets.ca

**K**  
INTERIORS

519.832.7040  
kaitlynshular.com

**DENNISON**  
HOMES

519.483.1199  
dennisonhomes.ca

Visit us at our showroom! | 1211 MacKenzie Rd. in Port Elgin | Open Mon. – Fri., 9am – 5pm







LOCAL SOURCE GUIDE

- Aiken Bros. Home Hardware • Blinds to You • Brubacher Siding and Construction • Bruce County Custom Cabinets • Carson Supply • Country Charm • Dennison Homes • Disla Designs • Edward Fuels • Greg Williamson Design • K-Interiors • Square Deal Neil's • The Old Barn Polished Stone Creations • West Shore Stone & Brick Inc. • Wiarton Home Hardware

is built so air tight); and harness the free energy from the sun with proper facing windows (southern exposure), overhangs and hopefully some solar panels.”

The goal is to have a house that is energy neutral, which means that once their solar power system is installed they will produce as much energy as they consume when averaged over the year. The house is completely electric, and although they could have connected to natural gas, they decided against the option to limit their dependency on fossil fuel. The house is heated by a ductless, air source heat pump – a two-head Mitsubishi Mr. Slim mini-split system (**Edward Fuels**). Their domestic hot water also utilizes heat pump technology for maximum efficiency while the ERV (energy recovery ventilator) provides continuous fresh air to the

house through a controlled entry point (**Aiken Bros. Home Hardware**). The metal roof was sourced at **Warton Home Hardware**.

This house was built to stand the test of time, from the sound construction principles and the environmentally-forward thinking, to the timeless and classic design aesthetic. It will carry Dennison, Haessler and their four children through the next phase of life as a family of six. **OH**

**TOP LEFT:** The simplicity of the white palette allows the accents to pop while colours and themes can be easily updated and changed as the children grow. **TOP RIGHT:** In the kids’ rooms, built-in cabinetry was installed in lieu of traditional closets to optimize functionality. Dennison made the lego table for their oldest son from leftover ash flooring. **BOTTOM RIGHT:** Shiplap accented with blue stripes and decor throughout creates a marine nursery theme.

**WEST SHORE  
STONE & BRICK**

Stone & Brick for New Homes & Renovations  
Thin Stone Veneers • Mulch (bulk & bagged)  
Topsoil/Aggregates • Steps/Flagstone/Rockery  
Fire Pit Kits • Paving & Patio Stones  
Landscape & Masonry Products

Showroom/Yard is South of Kincardine  
1.5km East of Hwy 21 on Conc. 12  
519.395.2747 • [www.WestShoreStoneandBrick.com](http://www.WestShoreStoneandBrick.com)

**CARSON  
SUPPLY**

HVAC . HYDRONICS . PLUMBING . WATERWORKS  
CARSON CUSTOM MOLDING

1071 Goderich St., Port Elgin ON  
1.800.265.3716 | [carsonsupply.com](http://carsonsupply.com)

**BEAVER  
HOMES & COTTAGES**

Concept to Design.  
Construction to completion.

Build with Wiarton Beaver  
Home & Cottage Program today!  
Call design consultant  
*Jason Stevens*  
Cell: 519.378.3883  
Email: [jason.stevens@wiartonhbc.com](mailto:jason.stevens@wiartonhbc.com)

**Warton Home Design Centre**  
a division of the Wiarton Home Building Centre  
160 Berford Street, Wiarton ON | 519.534.5599  
[wiartonhbc.com](http://wiartonhbc.com)





# GROWING *with* SUCCESS



PHOTO: MELANIE REKOLA

STORY **MELANIE REKOLA**

Growing food is one of the most popular forms of gardening practised today.

Given the ever increasing costs (and lack of nutritional content) of current grocery store produce, it makes sense. Growing food at home is actually pretty easy to do. For example, throwing a tomato plant or two in a sunny spot in your garden, and giving it an occasional watering, will likely produce a few fruits. But for your veggie garden to be truly successful in both health and bounty, a number of requirements must be met.

## PLACEMENT

Food gardens need sunshine, but only about eight hours per day. East facing is ideal, followed by south and west. Veggie gardens need not be planted in rows if you prefer free-form arrangement. Add some inexpensive and edible flower seeds such as sunflower and nasturtium

to punch up the colour. Be artistic as crops will change year to year so nothing is permanent.

*Continued on page 52*



PHOTO: MELANIE REKOLA



concept to completion...*commercial & residential*



## Landscaping

We offer a complete range of landscaping services including sodding, seeding, hydroseeding, planting, trees, paving stone, retaining walls and water gardens. Westside Nurseries offers a complete commercial and residential landscaping service, with all our work carried out by an experienced, professional crew, using only #1 nursery stock throughout.



**GARDEN CENTRE**  
*The area's largest garden centre!*

Owen Sound | 519. 376.6521 | [westsideowensound.com](http://westsideowensound.com)

## Nursery

We offer a wide variety of plants, horticultural products, outdoor furniture and accessories, with unparalleled quality and service. Westside Nurseries is the largest garden centre around, with over 18,000sq/ft of greenhouse space, where we grow a lot of our own bedding plants, ensuring our customers receive the highest quality plants available.





gardening

SOIL

Just as it is with good relationships and sound construction practises, a successful vegetable garden is built upon a solid foundation – its soil! Healthy soil is composed of weathered rock, organic matter, water and air, yet it also contains the magical hidden element of beneficial organisms. Let’s take a closer look.

**Minerals:** Roughly half of soil’s composition is made of bits of broken down weathered rock – the vital minerals necessary for healthy plants. The size of these particles determines the texture of soil. Large sand particles are found in sandy soil, medium particles in silty soil and small particles in clay-based soil.

**Organic Matter:** These are the partially decomposed remains of plant life, soil organisms and all kinds of vegetative matter. Although organic matter makes up only five to 10 per cent of soil composition, it is essential to bind soil particles together, retain moisture, allow air flow and provide food for the all-important microorganisms. All soil types will improve with an increase in organic matter so add in compost, aged manure or seed a “cover crop” such as annual rye grass, then till it into the existing soil to decompose.

**Soil Life:** Beneficial bacteria, fungi, nematodes and earthworms are just a few of the important creatures found in garden soil. These tiny beings are imperative to help convert the organic matter and minerals in soil into vitamins, hormones and nutrients plants need for optimum growth. Avoid sterilized commercial soils and composts, pesticides and herbicides. Add in worm compost, home compost or leaf mould to enhance your colonies instead.



CROP ROTATION

Certain plants are heavy feeders while others actually increase soil health in the areas in which they grow. This makes crop rotation very beneficial to the home garden. For example, legumes fix nitrogen into the soil, so plant cabbage and cauliflower in an area where you previously grew beans and peas. Root crops don’t like very rich soil, so plant these in areas previously inhabited by demanding cabbage and cauliflowers.

PERFECT COMPANIONS

Some plants have similar growing requirements and even grow better when planted together, making them natural allies. Other plants, like people, compete for resources. Many companion planting charts are available online so with a little research you’ll find out exactly which of your plants are friends or foes.

THE HARVEST

Every great chef knows each dish is only as good as its ingredients, so harvest your bounty at its optimum flavour. Sometimes you’ll have an abundance of one crop or have many crops that mature all at once. Don’t let those extras rot in place! Freezing and canning are easy and you may end up with enough delicious and nutritious preserves to last you until the following July.

Most mass-grown fruits and vegetables are sprayed with dangerous herbicides and pesticides, planted in depleted soil and shipped an average of 2,500 kilometres before they reach the local grocery store. Even much of our livestock are given loads of antibiotics and an unhealthy diet that then trickles down to us when we consume them. Given the state of the average Canadian’s body fat level, coupled with mass vitamin and mineral deficiencies, our bodies are simultaneously both starving and storing fat! However, when the body is nourished at a cellular level, cravings disappear, natural energy is restored and many health problems retreat. Food is the original medicine so why not give a healthful, tasty organic veggie garden a try? **OH**

*Melanie Rekola is a certified horticulturalist and landscape designer.*



online Get more in outdoors at [ourhomes.ca/mag/outdoor](http://ourhomes.ca/mag/outdoor)

*We bring custom window coverings to you!*

We carry the hottest styles and colours to fit your décor.

**BUDGET® BLINDS**

Style and service for every budget.®

shutters | draperies | wood blinds | cellular shades  
woven woods | roman shades | window film...and more

*“Expert Fit”*

Measuring & Installation Free In-Home Consultation  
**519-793-3921 [www.budgetblinds.com](http://www.budgetblinds.com)**

**Your Water Treatment Experts**

**FREE Water TEST**

**The Water Store**

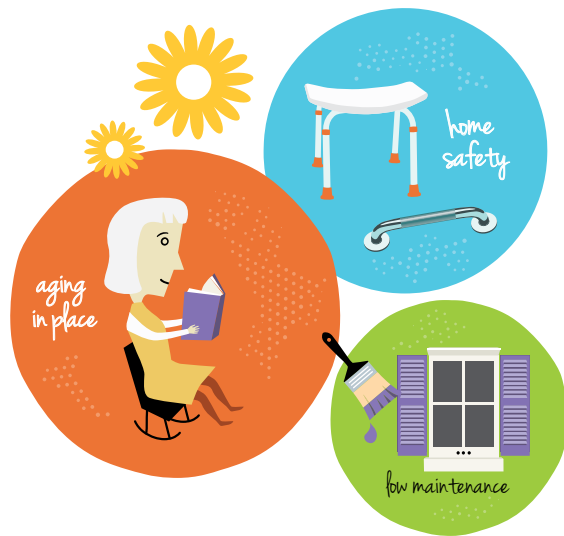
**OWEN SOUND • 519-371-8500**  
**[thewaterstoreowensound.com](http://thewaterstoreowensound.com)**

**Terrible water? We can fix it... GUARANTEED!**

**Peninsula Out Of Doors**

**Garden Centre & Complete Landscaping Services**  
14 Budvet Rd, Lions Head | 519.793.3979 | [penoutofdoors.com](http://penoutofdoors.com)





# HOME FOR THE AGES

STORY **WALTER FRANCZYK**  
ILLUSTRATION **SHEILA BRITTON**

Although most Canadians plan to grow old at home, many have given little thought to what's needed to actually age in their homes.

Some surveys suggest up to 85 per cent of Canadians intend to live at home for as long as possible. But more than one in three haven't seriously considered measures to make life at home easier and safer.

Thinking ahead is essential, says Heather Mahon, who owns and operates Heather's Home Healthcare, a medical equipment and supplies store that promotes independent living. "Today we can be really, really healthy and tomorrow that can change."

The earlier Canadians start planning, the more prepared they'll be to handle changes in their health and mobility, Service Canada advises. That planning should include current and future costs of staying at home, proximity to friends and family, transportation, and assessing safety risks at home. The agency has a wealth of information about aging in place.

## SAFETY MEASURES

Homeowners can make simple improvements themselves, such as installing grab bars in the shower, bath area and around the toilet, says Mahon. "If you're going to replace furniture, my suggestion is to go to a lift chair." Push-button controls on an electrically-powered recliner are easier to use than manually-operated handles that require strength and dexterity.

## MAINTENANCE

John Ritchie of Ritchie Renovations suggests making the home as maintenance-free as possible. He says windows and doors that need paint every year or every other year should be replaced, if homeowners have room in their budget. Vinyl or fibreglass windows need little maintenance. Some manufacturers offer windows that clean themselves with glass coatings that react with sunlight to break down dirt and grime that's washed away by rain. "The more maintenance-free they can make their house, the better off they are," Ritchie says.

Anyone heating a home with only wood should get a furnace, Ritchie recommends. "Get a source of heat other than wood because it's a lot of work."

When it comes to interior renovations, an occupational therapist can provide detailed advice tailored to individual needs.

## BATHROOMS

For Mahon, it's bathrooms that require the most attention. "Your biggest bugaboo is the bathroom," she warns. With many hard surfaces and edges that get slippery when wet, bathrooms can be a painful place for a fall. Grab bars and shower seats are key to safety. An unobstructed area, at least five feet in diameter, is needed for manoeuvring a wheelchair or walker in the bathroom. Motorized wheelchairs or scooters need more room. "Think about access," Mahon advises. "If I have to go in with a walker am I able to turn around?"

Curbless showers are terrific, she says. Although some people like to soak in a tub, as they age they're susceptible to what Mahon calls "beached whale syndrome."

"One day you're going to get caught in that tub and you're not going to be able to get out because either your arms aren't

strong enough or you can't get yourself turned around." When replacing a tub, she recommends a low-profile tub, no higher than 21 inches. "If you're doing flooring, put in a heated floor and get rid of scatter mats, they're a tripping hazard. As you age, you don't want those in there," she says.

The Canada Mortgage and Housing Corporation provides detailed recommendations for renovations or new construction to make nearly every room of the house safe, accessible and comfortable. It offers suggestions for kitchens, appliances, living rooms, exterior decks, gardens and landscaping.

Revenue Canada allows homeowners age 65 or older and those with disabilities to claim up to \$10,000 for renovation expenses that make their homes accessible and safer.

In addition to accessibility, people who want to grow old at home should consider day-to-day maintenance, such as snow removal and year-to-year maintenance, says Leah Kane, a sales person with RE/MAX North Country Realty Inc. "Will the furnace need to be replaced in the next little while? Those big ticket items need to be done. Budget for those big ticket items," she urges.

## DOWNSIZING

Some people are selling their family homes in large urban areas, where homes fetch high prices, and are moving to smaller communities where housing is less expensive. "That is a big chunk of our business," says Kane. "We see people migrating north because this is the lifestyle they've been envisioning for a long time. When they come up here, it's much more affordable."

One-floor living, with comfortable living arrangements, master bedroom and ground-floor laundry, is ideal, she says. "If people are transitioning from a large home into a smaller home, the benefits to doing that is their taxes will be lower. Their heating costs will be lower," Kane says. "If you need to replace a roof over a 1,000 sq. ft. home versus a 1,700 sq. ft. foot home with a second storey, it's going to be less expensive. A smaller bungalow is going to be much more affordable."

Financially, the longer people can live in their own homes, the better, she says. **OH**

online

For more information about aging at home visit [ourhomes.ca/mag/aging](http://ourhomes.ca/mag/aging)

## SUTACRITI HEIGHTS

Phase III

**PREMIUM ONE ACRE+ LOTS WITH SPECTACULAR VIEWS OF GEORGIAN BAY**  
FROM **\$85,000**

**Just North of Cobble Beach Golf Links**  
Armour Rock Landscaping | Municipal Water | Underground Hydro, Telephone, Streetlights, Paved Roadways & Natural Gas (2018)

**Harold Sutherland CONSTRUCTION**  
Established in 1960

**HSC-LTD.COM 519.376.5698**

## Maid in THE VALLEY

*Providing dependable, consistent home cleaning services since 1993.*

**Heather Gosling - Manager**  
[heather@maidinthevalley.com](mailto:heather@maidinthevalley.com)

**Book today!**  
**705-444-6243**

[www.maidincollingwood.com](http://www.maidincollingwood.com)





# GARDEN



## THE GREAT OUT OF DOORS

STORY **TAMARISK MCNALTY STEPHENS**  
PHOTOGRAPHY **SARAH TACOMA**

**THE PLACE:** Last year marked a major milestone for **Peninsula Out of Doors** as the garden centre in Lion's Head celebrated its 25th anniversary. Don and Wendy Cameron began the company in 1987 as a lawn maintenance and landscaping service, and expanded to a full garden centre in 1992. The Camerons' son Justin joined the company in 2002 after graduating with a degree in Landscape and Horticulture. The goal has always been to provide the community with quality products, superior customer service and competitive prices. There is now 14,000 square feet of greenhouses where they grow 90 per cent of their own annuals, perennials and herbs. Trees, shrubs, garden décor and all of your planting needs are available.

**THE GOODS:** Landscaping services are an extensive part of the offerings, with projects ranging from flower bed and shrub planting to the design and creation of a complete backyard oasis. Patios, walkways, retaining walls, irrigation and naturalizing the customer's outdoor space is their speciality. Outdoor fire pits and landscape lighting are increasing in popularity as people expand their entertaining living space to the natural beauty of the great outdoors. The Camerons and their staff believe in a collaborative approach that combines the ideas, requirements and desires of their clients with the workmanship, experience and quality of their team to create an outdoor living space that will be enjoyed for many years.



**WHAT'S HOT?** As people live very busy lives, low-maintenance gardens and plantings continue to be in demand. Cottagers, a large clientele, are looking for plants that can survive weekend to weekend. Wendy recommends the Dragon Wing Begonia and says that "once people try them, they are usually hooked." With a lovely foliage and lengthy bloom season, they are virtually maintenance free and tolerant to infrequent watering. Also, the various textures, colours and graceful lines of perennial grasses continue to grow in popularity and are an attractive addition to almost any garden.

**WHERE:**  
14 Budvet Rd. & Hwy. 6, Lion's Head  
519.793.3979 | [penoutofdoors.com](http://penoutofdoors.com) **OH**







Garages  
Closets  
Enclosures  
Aluminum Decking  
Railings  
& More!

*your*  
**HOME EXTRAS**  
S P E C I A L I S T S



Maximize your storage, organizations and outdoor space.  
We'll create a 3D model to help visualize the end result.



**WILSON**  
**SOLUTIONS**

[www.wilsonsolutions.ca](http://www.wilsonsolutions.ca)

P 519.369.8225 | [info@wilsonsolutions.ca](mailto:info@wilsonsolutions.ca)

Contact us for a free estimate.



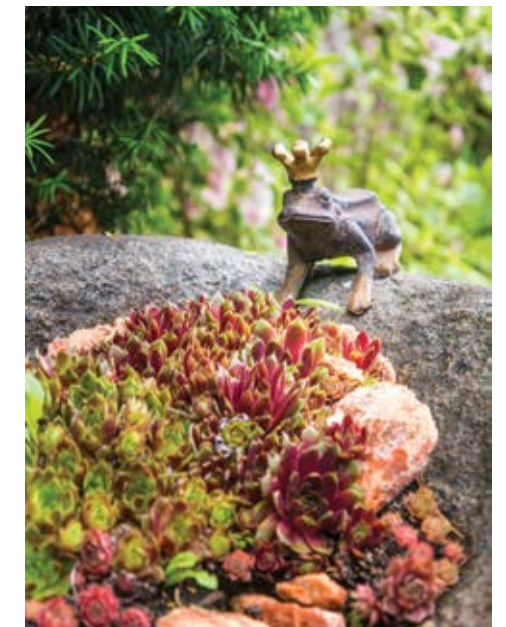
STORY SARAH SLOAN | PHOTOGRAPHY SANDY MACKAY

# BLOOM BY BLOOM



**N**estled in the quiet countryside, Barbara and Morgan Weatherall's home is the perfect retreat in all seasons. Just a short drive to the ski hills, you can imagine cosying up after a day on the slopes by their magnificent fireplace, watching the snow collect on the branches of the large trees out front.

*Continued on page 62*







**TOP RIGHT:** Whimsical birdhouses pepper the rock garden. **ABOVE:** You can tour Froggies Song as part of the Rural Gardens of Grey and Bruce Counties Network. **RIGHT:** Scalloped wrought-iron fencing with Gothic, arch-top wooden gates greet you at the garden entrance.



But hidden beneath the snow, a beautiful oasis of gardens – planted by Barbara, a master gardener – can be seen coming to life each spring through the large chalet-style windows (**Taylor Made Windows & Doors**). Barbara started planting a single garden as a way to distract herself from worrying when Morgan was working out of town with their company **Weatherall Dock and Dredge**. Over the years, one garden turned into two and soon Barbara found herself with many story-book-like cottage style gardens to tend to. The property is affectionately known as Froggies Song, a one-of-a-kind display of various blooms, colourful sheds, garden ornaments and a lily pond. **Ron Sharron** of **Yesterdays Garden Centre Landscaping & Construction** helped construct arbours, a gazebo and walkway, while Barbara sourced trees and elements for her fairy garden from **Westside Nurseries & Greenhouses Ltd.** Outdoor furniture is from **The Fyre Place & Patio Shop**.

Although built in 1980 by Gary Doig, the Weatherall home is rich in family history. What was once the bones of Morgan's old family farm became the foundation of this home, which he designed with an old school friend. "The stone is all from the farm," explains Barbara. "Years ago, they were large field stones from fence rows." The portion of land overlooking the valley was gifted to Barbara and Morgan on their wedding day in 1976, and the couple eventually bought the rest of the farmland. "I drove the tractor and we went around and picked out the stones," she recalls.



**TOP:** The features of the kitchen cabinetry are carried onto the walls with the painted moulding detail. **ABOVE:** All of the textures in the space tell a story while adding layers of visual interest. **RIGHT:** The black light fixture above the dining table ties together all of the dark elements in the space while the crystal keeps the fixture from feeling weighty. Fresh cut flowers throughout the home are from Serendipity Florals.

They then hired a stone mason to split the stones that not only went into the structure itself, but also the fireplace, which remains today. At the same time, an old factory in Owen Sound was being taken down and Morgan purchased the old cherry beams, which accent the ceiling in the foyer, kitchen and living room while antiqued elm flooring by **Old Vintage Floors** adorn the floors. Below the fireplace, beautiful slate leads into the open-concept dining area and the kitchen, which was updated in recent years. "Morgan said he wanted to sit at the kitchen table and see who was coming up the driveway, and he can," Barbara laughs. That's about the only element of the space that has remained untouched in its 38 years, especially since Barbara acquired the expertise of designer **Carla Pavlov**, owner of **CR Designs**.

*Continued on page 65*





Built-in cabinetry is home to the TV and open shelves display collectibles with plenty of concealed storage below.



**ABOVE:** The stone that was harvested from fence rows on the property adorns the feature fireplace. **TOP RIGHT:** A vaulted ceiling in the living room with floor-to-ceiling windows lets the light beam in while the trees are nature's art. **RIGHT:** A coffee table books showcases Barbara's gardens.



“The goal was to bring the outside in so the colours and finishes seamlessly blend for a visual connection to the outdoors,” explains Pavlov of the space. “When you walk in, the first thing your eyes rest on is the dining room with a crystal and black wrought-iron, seven light, horizontal chandelier, which adds a touch of glamour above the country dining table near the doors to Barb’s gardens.”

On the wall next to the table hangs beautiful acrylic art by **Carol Norris**, owner of the **Light House Photo Gallery**.

Across from the dining table, a large granite-topped island played an important role in the home’s kitchen upgrade as the Weatheralls frequently host company parties and family events.

Hanging cabinets that once divided the kitchen and dining area were torn out and replaced with rich, cherry wood cabinets (**Exquisite Wood Designs Inc.**) and new appliances (**Macdonald’s Furniture & Appliances**), which together create a contemporary space.

Another impressive feature in the kitchen is the exposed brick wall – the back side of the fireplace which was originally built to be a pizza oven.

Off of the front foyer, the hall of the 1,700 sq. ft. home leads to three of the four bedrooms as well as a shared bathroom off of the master.

“We utilized found space by having the closets professionally organized by **Bob Wilson**, owner of **Wilson Solutions**,” Pavlov explains. “We did away with the furniture and opted for a built-in armoire and detailed it with mirror to reflect light.”

Pavlov chose one of her favourite go-to white paints (Cloud White, **Benjamin Moore**) in a pearl finish to illuminate the floor-to-ceiling custom trim work by **Dorothy Smith**.

*Continued on page 66*



feature



Glamour continues next door in the guest room, which saw her son's old room transformed into a luxurious space complete with a chandelier, mirrored side tables and glass table lamps.

Pavlov installed custom full-length silk drapery panels, with crystal finial hardware and updated the look of the existing bedspread by incorporating new pillows. She painted the walls Brandy Cream (Benjamin Moore) and refinished an existing antique chair in flat black to tie it all together.

"I knew everything was outdated, and Carla brought it back to life," Barbara says. "I showed her through the house and she tweaked things. Now it's beautiful, night and day. I think it has finally come together and it's nice that it feels fresh." *Continued on page 68*



**TOP LEFT:** Mirrored bedside tables are a great way to reflect the light and keep a small space from feeling cramped. **ABOVE:** The main bath with shared entrance off of the principal bedroom looks out to the gardens. **RIGHT:** Painted out applied trim enhances the bedroom walls by adding dimension and architectural interest.

# DETAILS THAT GET NOTICED



*Exquisite*  
Wood Design Inc.

*Your custom Kitchen specialist!*

519.370.0808 1980 20th St. East, Owen Sound [ewdesigns.ca](http://ewdesigns.ca)







The Weatheralls' property has really come full circle since Morgan used to cut hay there as a child. Building from the ground up, raising a family, operating a business and creating exquisite gardens on its grounds, history continues to write itself at the Weatheralls' home down the old country lane outside of Markdale, overlooking the valley. **OH**



**TOP LEFT:** Garden ornaments and small personal touches are everywhere you look. **TOP RIGHT:** Coco, the family pooch, patiently anticipates the throw from Barbara. **ABOVE:** 'Rooster Morgan House Bed & Breakfast', is one of Barbara's garden sheds on the property. **LEFT:** The blue sign with the yellow flower indicates participation in the Rural Gardens of Grey & Bruce Counties. Tour available with a small donation.



### SOURCE GUIDE

- Baywood Designs • Birch & Benjamin • Light House Photo Gallery • Centre Grey Building Centre • CR Designs
- Dan Harris • Digital Vision Security • Dorothy Smith
- Exquisite Wood Designs Inc. • Folmer's Garden Centre
- Georgian Audio Video • Macdonald's Furniture & Appliances • Maxwell Garden Center • Old Vintage Floors
- Peek Thru My Window • Taylor Made Windows & Doors
- Riverside Greenhouses • Serendipity Florals • The Fyre Place & Patio Shop • Town & Country Garden Centre • Van Allen Design Centre • Westside Nurseries & Greenhouses
- Wildthings Plant Farm • Wilson Solutions • Yesterdays Garden Centre Landscaping & Construction



**WOOD IS GOOD**  
LIVE EDGE & CUSTOM FURNITURE



519 364 2731 [WWW.WOODISGOODLIVEEDGE.COM](http://WWW.WOODISGOODLIVEEDGE.COM)



**Yesterdays Garden CENTRE**  
landscaping & construction  
401328 GREY ROAD 4, HANOVER

OUTDOOR LIVING SPACES • STONE PATIOS & WALKWAYS  
EXCEPTIONAL DECKS • GARDEN STRUCTURES & HOME ADDITIONS  
'ONE OF CANADA'S TOP 40 SPECIALTY COUNTRY NURSERIES'



519 364 2731 [WWW.YESTERDAYSGARDEN.CA](http://WWW.YESTERDAYSGARDEN.CA)

**FREE ADMISSION**



**Home and Cottage Show**  
Grey Highlands

The Municipality of Grey Highlands will host the first annual Home and Cottage Show  
**Saturday April 21**  
9 am - 4 pm  
Flesherton Arena

Over 100 vendors!  
• Local trades  
• Service providers  
• Related businesses  
• Interactive displays  
• Kid's programs  
• Free draws

[www.greyhighlandshomeshow.ca](http://www.greyhighlandshomeshow.ca)



Check out our different styles of saunas with many sizes and options.



We also deliver and install Quality Custom Built Sheds.





**Maxwell GARDEN CENTER**

**Full Service Garden Center**  
453897 Grey Rd.2, R.R.#1 Maxwell, ON  
519.922.1479 | 844.564.0224 | Visit our online store at [www.maxwellgardencenter.com](http://www.maxwellgardencenter.com)





PHOTOGRAPHY SARAH TACOMA

Relax, entertain and enjoy living in nature with the help of local professionals.

**MIKE SCHENK**  
*Land & Stone*

**Tell us about your company:** We are a small company in our 18th year of business and remain intent on providing high quality, unique outdoor spaces. Our focus is on environmentally sustainable construction using local native plant material and natural stone. Stonework has always been a passion, timeless and ever improving with age.

**What are homeowners requesting when it comes to outdoor living spaces?** Expanding the living space seems to be foremost, with as little maintenance as possible. Also, developing various surface heights to generate more usable areas, creating ambience and a smooth transition from the home to the beautiful outdoors where we reside.

**Any plans for your own outdoor projects this spring?** Spring is such a busy time in this business making it difficult to undertake any serious projects. I live on an old farm so there is always a list of things that need fixing. The ongoing development of the vegetable garden will be at the fore and with my neighbours' demand for eggs outstripping supply there will have to be consideration to expand the coop.



**DAN JOHNSON**  
*Postech Grey Bruce*

**What are the various applications for screw piles?** Screw piles can be used in a variety of projects, including decks, porches, sunrooms, additions, foundations, cottages, garages, docks and boat houses to name a few. Almost any project that requires support, you can use a Postech Screw Pile.

**How are they installed?** Postech Screw Piles are installed using a small mini excavator, which makes accessing small areas easier. The machine has a specially designed auger driver attachment that attaches to the screw pile. On the auger driver, we have a calibrated torque system to monitor the entire installation. A report is

generated from that system that will show the bearing capacity of that screw pile for your records and the building department.

**What are the benefits over traditional methods?** There are many! Screw piles can be installed year-round, there's no concrete drying time, less disturbance to your property, they can be built on the same day and can be installed where access is difficult. The screw piles are fully galvanized, insulated and are very environmentally friendly. They can also be moved easily if your project requires it. Please give us a call to discuss Postech Screw Piles for your next project.

*Continued on page 72*





**JOHN PEDLAR**  
*Rock Solid Landscapes*

**What's trending in outdoor spaces?** It has become ever so popular to entertain outside and I've noticed more often than not, clients requesting outdoor kitchen and dining areas be included during the design process. Continuing with this theme, another popular request is an area for outdoor fire, whether it be wood-burning fire pits or a more modern gas fire table.

**What's your favourite space to create for outdoor entertaining?** Pools are always fun to work around. I like creating unique poolside structures along with relaxing lounge areas – close to a fully stocked bar.

**Any plans for your own spring landscape projects?** We installed a pool last summer at our home, so when I am not working I plan to be at home with the family relaxing.



**KELLY DEVRIES**  
*Water & Wellness*

**Tell us about your company:** We are an outdoor leisure store that brings top-quality outdoor products to our area. We are focussed on hot tubs, swim spas and pools.

**What new products are launching in 2018?** A new lineup of Weber barbecues.

**What types of pools do you carry?** We are a leader in Swim Spas, and offer the Hydropool AquaSport and AquaTrainer models. We also install fiberglass, steel and vinyl in-ground and on-ground pools, as well as supply above-ground kits.

*Continued on page 74*





**What does an average spring or summer day look like at Hutten & Co.?** It looks exciting! There is usually high activity throughout the day, which creates a lot of energy. It's always exciting to see multiple crews coordinating their efforts in a mass exodus every morning. Then, throughout the day customers come and go to view designs in progress or view and purchase landscape and dock products. While the crews are out getting creative, the office gets to also enjoy the weather with open overhead doors in key work spaces – everyone gets to enjoy the sun!

**Where should homeowners start when planning a landscape project?** Inspiration

happens anywhere, and we love to see collections of online albums or magazine clippings. When in doubt, we have a great questionnaire that helps get the creative process started, and an awesome portfolio of completed projects on our website to refer to.

**Tell us about one of your favourite projects:** Naturalized Modern, featured on our website, was a lot of fun! We built our first engineered green roof, worked on heated natural stone patios and installed massive trees around really impressive stone slab pathways, while providing access to crystal clear water with a Super Duty Dock system. Beautiful property, exciting project.

KEN AND  
MARK HUTTEN  
*Hutten & Co. Land & Shore*

PHOTO: SANDY MACKAY



SARAH TAYLOR  
*Serendipity Florals*

**How did Serendipity Florals get its start?** Several years ago when I was in my early 20s, I took a course in flower arranging at a local flower shop. From then on I worked in a florist's shop in London on Saturdays. I have always grown my own flowers and one day a young girl approached me about doing her wedding flowers based on what was growing in my garden at the time. I went for it and the rest is history!

**Tell us about your on-farm gardens:** I established my garden in 2008 when we purchased our farm. I was lucky to find a grower in Nova Scotia who was able to provide me with the large quantities of lilies I was looking for. From there I just kept expanding every year and we grow everything on half an acre. We currently grow lilies, astilbe, roses, calla lilies, dahlias, gladiolas, several varieties of peonies and more.

**What is your favourite flower to work with and why?** My favourite flower has always been the star gazer lily. I love lilies of all sizes and colors. They truly make a beautiful bouquet. There are so many more varieties than when I started growing my own in 1992.

Continued on page 76



JANET & DOUG  
WRIGHT  
*Built Wright Fencing*

**Tell us about your services:** Built Wright Fencing provides a wide range of residential, commercial and agricultural fencing to Grey and Bruce counties – from a small backyard fence to a perimeter fence for your farm or commercial yard. Large or small, we look at all projects equally and give them the same attention to detail.

**What are popular fencing solutions in Grey & Bruce?** Is it for pure safety, security and functionality or to show off your style with something unique or decorative? We install many styles such as wrought iron, decorative and privacy vinyl, chain-link or wood privacy. We will work with you to provide a solution that meets your requirements and budget.

**What ways do you suggest enhancing landscape design with your products?** With our 30 years of experience and knowledge in fence installation, we can advise you in your decision-making process. We will build the fence design of your choice that creates a beautiful backdrop and complements your backyard.

*Continued on page 78*



Your First Choice For  
Quality Home Comfort

HIGH  
QUALITY

SERVICE  
EXCELLENCE

At Carrier we deliver quality and energy efficiency. Because Carrier® systems are reliable and so accurately installed by a network of independent contractors, our products are backed by a 10-year parts limited warranty.\*

Discover your comfort solutions by  
Contacting your Carrier expert today.

turn to the experts  
©Carrier Corporation 12/2016

PLUMBING, HEATING, A/C, GEOTHERMAL & WATER TREATMENT

Collingwood • Markdale • Owen Sound • Durham  
519-371-5815 • 519-986-3307 • 800-661-5796 • 519-369-1011  
northern@sandyhamilton.ca

MORE GOES INTO YOUR  
SEPTIC THAN YOU THINK.

Keeping your septic system well-maintained is more complicated than you think. With over 30 years of providing expert service, you can trust Mac Taylor to think of everything.

**MAC TAYLOR**  
CORPORATION

SEPTIC SYSTEMS FOR HOMES AND COTTAGES  
DESIGN & PERMIT • SOIL SAMPLING • INSTALLATION • MAINTENANCE PROGRAMS

[www.mactaylor.com](http://www.mactaylor.com) 519-794-2380

Building your Dreams...  
one bucket at a time.

Best-in-class loader lift capacity  
Best-in-class 3-point lift capacity

**mCRD** **7 YEAR LIMITED POWERTRAIN WARRANTY**

**Mahindra**  
Rise.

**STOLTZ**  
SALES & SERVICE

Listowel • Elmira • Mildmay

Listowel • 1-800-665-2151  
Elmira • 1-800-665-1561  
Mildmay • 1-800-829-2672  
[www.stoltzsales.com](http://www.stoltzsales.com)



people



MELODY KLAGES  
& NICOLE WOLFE  
*Living Lighting*

**Tell us about your lighting design services:**  
We are a family-owned and operated lighting store focused on service and attention to detail. We help provide a diverse selection of products from task, ambient and accent lighting. You can come into the showroom to browse or we can consult with you on site. We work closely with an electrical contractor who can assist with install or any other electrical projects you have on the go.

**What is trending in outdoor lighting?**  
More people are utilizing their outdoor space as an extension of their home – it's not just a backyard, deck or front entrance anymore.

Once unused space, like soffits, now house pot lights that accent the features of the home. On the deck, people are adding pergolas and shelters where they can hang outdoor chandeliers so they have a new space for entertaining on those warm summer nights.

**What are your general guidelines when it comes to landscape lighting?** Whether you're looking for light for security reasons or just to show off your beautiful gardens, we can help you find what will work the best for you. We can assist you in picking out the correct pieces to highlight trees, accent water features and light up pathways and steps.

*Continued on page 80*

Planning a 2018 kitchen project?  
Take advantage of your best opportunity for both **SAVINGS**  
and information and join us on...

# The Possibility TOUR



**CABICO** custom cabinetry

  
C A M B R I A<sup>®</sup>  
*elegant solutions*

**FRIGIDAIRE**  
GALLERY

**BLANCO**

Hanover Home Hardware proudly presents **FOUR UNIQUE KITCHENS** for your viewing. Participants will be escorted by a *Graham Driving Service* **LIMOUSINE** to each one of our featured homes, approximately half an hour per home. A variety of **WINES AND APPETIZERS** will be served at each home. You will have an opportunity to meet and speak with representatives from all participating manufacturers as well as members of the Hanover Home Hardware team of experts.

**PRIZES AND GIVEAWAYS** will be handed out at the end of the evening including special saving coupons from Hanover Home Hardware and each of our four suppliers.

**HDH** All proceeds to the  
FOUNDATION **HANOVER & DISTRICT HOSPITAL FOUNDATION.**

**Join us on Wednesday, May 9<sup>th</sup>**  
**Tickets are limited! Only 40 available.**  
**Don't miss out!**  
**Get yours at Hanover Home Hardware today!**

\*see in store for details

**HANOVER**  
**Home**  
**hardware**  
**building centre**

2016 Home Hardware  
Store Of The Year - Canada

A true one stop shopping experience for cabinets, quartz tops, appliances, sinks, faucets, flooring, hardware, paint, kitchen design and many more items. Products from value to full custom high end. Guaranteed installation or supply only.

580 24th Avenue, Hanover  
519.364.3410



MARK BURGESS  
& JOE VOISIN  
Stoltz Sales & Service

**Tell us about your business:** Stoltz Sales & Service is celebrating 40 years of being a family owned and operated farm/homestead equipment dealership. Stoltz Sales & Service Mildmay is located between Walkerton and Mildmay on Highway 9. For the home, property and cottage owner we carry a full line of Cub Cadet garden and snow removal equipment and Mahindra tractors, utility vehicles and XTVs.

**What new products are you excited about?** We are most excited about two new products by Mahindra – the Retriever and Emax 20. The Retriever is Mahindra's latest utility vehicle and it excels in comfort, performance and warranty. The solid build quality of the Emax 20 outperforms the competition while maintaining a very competitive price point.

**How can you make outdoor maintenance less strenuous?** We are a full-service dealership and we take care of our customers from the moment they walk through our doors to the purchase of the unit and any parts or service they may require after. We don't stop our customer relationship after the purchase. **OH**



SEE OUR DIRECTORY FOR ALL CONTACT INFORMATION.

The **most** energy efficient homes on the market. **QUAD-LOCK**  
Insulating Concrete Forms



**High-R**  
Construction  
Custom Home Builder  
Excavating | Foundations  
Septic Installations | Insulated Concrete Forms Specialist

519-377-7217 | 519-377-7331  
**www.HighR.ca**

*Stretch and Relax!*



With a **NAPOLEON** fireplace.

The **FYRE PLACE & PATIO SHOP** Since 1973  
Located at Highway 6 & 21, Springmount (Near Owen Sound)  
519.371.2963 | [www.thefyreplace.com](http://www.thefyreplace.com)



**Built Wright FENCING**  
*Chesley*

*30 years fencing experience!*

**519.387.5022**  
**[builtwrightfencing.ca](http://builtwrightfencing.ca)**

**Residential | Commercial | Agriculture**

*"Changing the look of your property."*

**FREE ESTIMATES & PLANNING**

- Chain Link
- Wrought Iron
- Vinyl
- Wood Privacy
- Ball Diamonds
- Tennis Courts
- Swimming Pools
- Farm Fence

**f Follow us on Facebook for more details.**



green living

# PASSIVE HOUSE

STORY **MEHREEN SHAHID**  
PHOTOGRAPHY **JASON HARTOG**

**DOING A RENOVATION OR BUILDING NEW? GO PASSIVE.**



That's the advice Rob Bernhardt, CEO of Passive House Canada, has for those taking up construction projects.

"If you're building something that you want to sell competitively, you might want to build it at a higher level," he says.

Bernhardt is an expert in Passivhaus (passive house) standards.

Before there were green buildings and smart homes, there were passive houses, a conservation-based concept that originated in Europe and has now slowly made its way into Canada.

A passive house is a design approach that follows building science, studying how heat, air and moisture move through and affect buildings, says Ed Marion, Certified Passive House Consultant with Passive House Ontario.

Certified designers use specialized software to create a "house as a system," he explains. All components in such a build – the site characteristics, house shape, window size and placement and insulation levels – work together to optimize building performance.

For instance, a site that has good solar access makes a difference, says Marion. It may not always be possible, but it has to be accounted for in the build.

"The net result is a super comfortable, ultra energy-efficient house with high indoor air quality, and excellent durability," says Marion, who built his passive house in Oakville five years ago.



Other energy efficient features include triple-glazed windows, extra insulation and a simple house design, he says. A building with many corners needs an equally busy foundation and roof, features that drive construction cost and increase energy usage.

Despite the name, says Bernhardt, passive houses have an active heating mechanism.

"That system can be very small," says Bernhardt, also a passive house

owner. "A small radiant electric wall panel is an active system that can typically be used in a passive house."

In addition, a high-quality ventilation system must be used to supply fresh air to all rooms throughout the building, he adds.

These standards are not just for newer houses, says Bernhardt.

"We need to ensure when retrofits are done they are done to the EnerPHit standards (passive house standards for retrofit)," he says.

"Often this is done piece by piece – the windows may reach their end before the cladding – so you build a retrofit plan that allows you to replace them with proper passive-house-level windows."

Building to passive house standards may mean a simpler design, but it could also mean higher costs.

Constructing these one-off custom homes costs 10 to 15 per cent more than what it costs to build to code, says Marion.

But large reductions in energy bills (up to 70 per cent) can offset extra construction costs while yielding a superior living environment in any climate, he says.

With many municipalities working toward a climate action plan for reducing greenhouse gases, that's where the future is headed, says Marion.

Governments can encourage builders by offering rebates based on meeting quantifiable energy reduction targets, says Marion.

The federal government has already stepped in with Build Smart Canada, says Bernhardt. It's Canada's strategy to creating a model national building code by 2030 for net-zero energy ready buildings.

"It's widely viewed as being an approximation of the passive house," he says. "With this strategy, we now have a specific plan to move in this direction for the entire country."

Where some passive houses have already been built across Canada, larger projects are now being pursued, too.

Sidewalk Toronto is one such example, says Bernhardt. It is an initiative for the development of 13 acres by Toronto's waterfront, he explains. The land has been tagged as the potential new headquarters for Google Canada and is part of a provincial, federal and municipal partnership to redevelop 2,000 acres of Toronto's waterfront.

Whether building passive on a large scale or simply retrofitting your house, once you're done, says Bernhardt, certification is a good idea. It's a valuable quality assurance mechanism that is available, even though it isn't required.

A passive house designer applies for certification through an accredited North American certifier, who will evaluate the building and report to the Passive House Institute for a certificate, he says.

And once you've lived in a passive house, says Bernhardt, you wouldn't want to live anywhere else. **OH**

# Solar Pays!

**INVEST IN THE SUN**  
Lock in the price you pay for power.



## A solid environmental & economic investment.



# Put some sunshine in your bank account!

How would you like to receive a substantially lower power bill? Reduce your electricity costs for decades.

Contact Blackline Power to evaluate your solar options. We are the local experts and have installed hundreds of solar systems since 2010. Invest in the sun and reduce your carbon footprint at your home, cottage, farm or business!

 **Blackline Power**  
RENEWABLE ENERGY SPECIALISTS  
**519.371.8945**  
[www.blacklinepower.com](http://www.blacklinepower.com)



**ROOFTOP & GROUND SYSTEMS. RESIDENTIAL, AGRICULTURAL, COMMERCIAL & MUNICIPAL.**



# GOOD THINGS COME TO THOSE WHO WAIT

STORY **YANIC SIMARD**



Looking to renovate a room or two? Want to refresh your space before a big event? No

matter the size or style of project you're planning, this guide will help you know how long you really need to achieve your home makeover – and trust me, it's nothing like what you've seen on television.



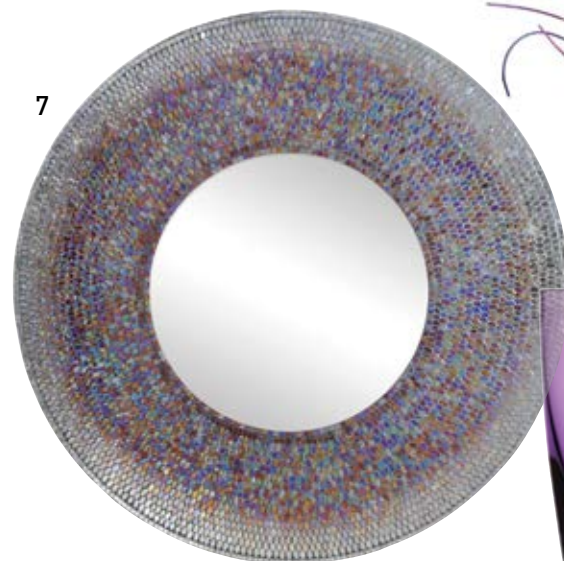
If you've been doing the math, you'll see that even small projects can easily take almost half a year, which is far from the three days you see on television. However, you get what you put into your design, and taking the proper time leads to timeless results – all while avoiding a lot of stress and the potential for costly mistakes along the way. Working with a reputable firm can expedite this process and keep you on time and on budget. **OH**





*PANTONE'S  
COLOUR OF 2018*

# ULTRA VIOLET



1. **BENJAMIN MOORE:** Paint in Mystical Grape (2071-30), Your Majesty (1400) & Gentle Violet (2071-20)  
2. **YORK WALLCOVERINGS:** Aquarella (ST6025) Wallpaper from the Stacy Garcia Paper Muse Collection  
3. **DIMOND LIGHTING:** Wayfarer Table Lamp in Purple 4. **AREAREWARE:** Cubebot in Violet 5. **DYSON:** Supersonic Hair Dryer in Black/Purple 6. **BERNHARDT:** Alana Chair 7. **RENWIL:** Seychelle Mosaic Mirror  
8. **RENWIL:** Feather Wall Décor 9. **WATERFORD:** W Heather Tumbler 10. **INNIT DESIGNS:** Acapulco Chair in Purple 11. **KARTELL:** Tip Top Side Table in Purple 12. **GROSCHÉ:** BASEL Small French Press in Purple  
13. **DYSON:** Dyson Ball Animal 2 Vacuum 14. **JAIPUR LIVING:** Chroma TX Rug in Creamy White & Gentle Violet 15. **CALLIGARIS:** Connor Felt Basket in Violet 16. **ZUO MODERN:** Hyper Dining Chair in Purple  
17. **SURYA:** Cotton Velvet Pillow in Violet 18. **EASTERN ACCENTS:** Celerie Kemble Purple Poppy Hand-Painted Pillow 19. **SURYA:** Fargo Pouf in Violet **OH**

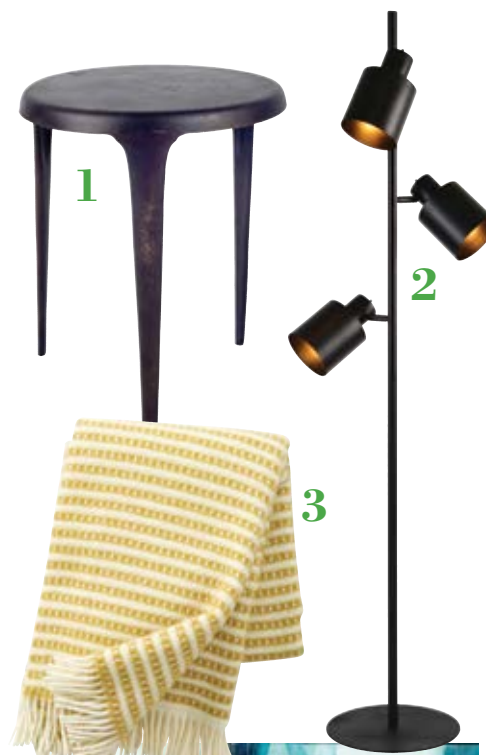


double take



PHOTO: JASON HARTOG

1. **MERCANA:** Abraham Side Table  
2. **RENWIL:** Downfield Floor Lamp  
3. **KLIPPAN:** Olle Throw in Saffron  
4. **SURYA:** Eternal Wall Art by Caroline Ashton  
5. **ZUO MODERN:** Lincoln Lounge Chair in Gray  
6. **CYAN DESIGN:** Meadow Vases  
7. **MUUTO:** Balance Vase Single Set in Black  
8. **SURYA:** Medora Rug MOD-1012  
9. **KLAUS:** Cherner Multiflex Sideboard OH



8

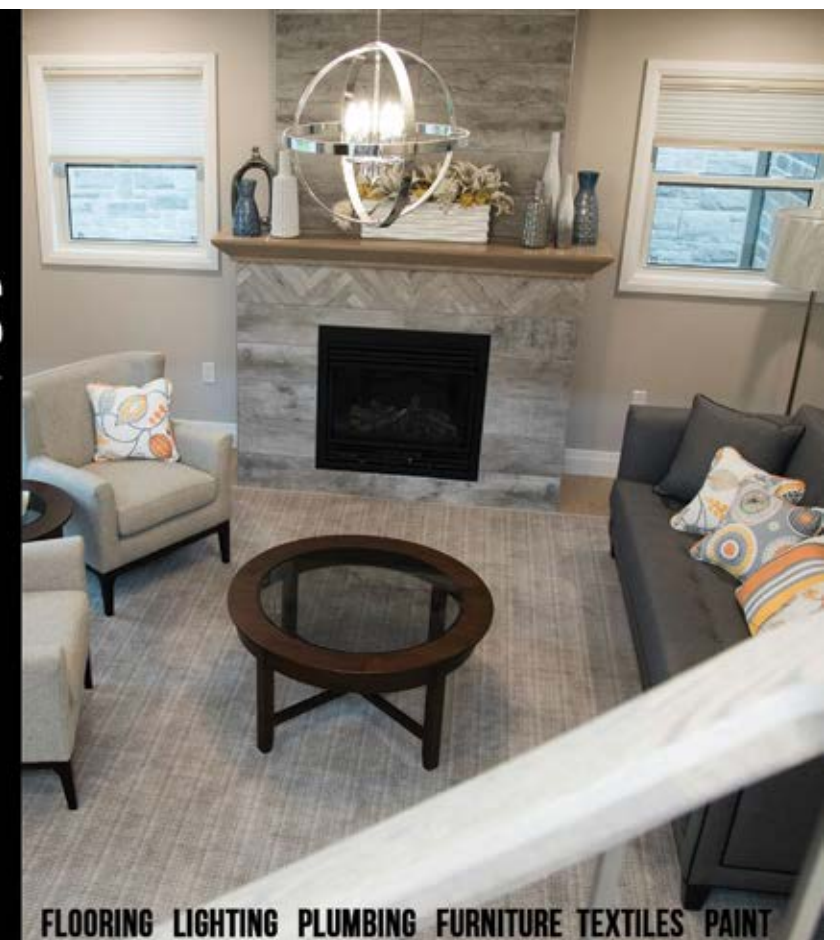
9

**HOUSE RULES**

BOOK A DESIGN CONSULTATION WITH ONE OF OUR DESIGNERS TODAY

For more information call, email or walk in and take a tour of our showroom  
13555 Bruce Rd. 10  
Hanover, Ont.  
226-434-1234  
info@houserulesdesign.com  
www.houserulesdesign.com

f i t



FLOORING LIGHTING PLUMBING FURNITURE TEXTILES PAINT



**GREY BRUCE**  
paint & décor

furniture, art work, & home accessories  
complimentary in-store design consultants  
spray-paint refinishing for cabinets etc.

**Benjamin Moore**

1580 20th Street East  
Owen Sound 519 371 4207

GreyBrucePaint.com





# NATURALIZED ELEGANCE

STORY **SARAH SLOAN** | PHOTOGRAPHY **SANDY MACKAY**



The coffered ceiling adds a refined layer of detail to the open-concept space. The low profile of the comfortable leather sectional does not obstruct the view to the woods out back. **TOP:** Blue skies and forest backdrop complete this picturesque setting. **FAR RIGHT:** Homeowner Betty Morel is definitely a master of the mix: contemporary fireplace with marble surround and panel mould mantel, traditional chairs in a fun upholstery, shag rug, glass coffee table, and wooden side table create a beautiful aesthetic.



Positioned on a unique angle with a welcoming circular drive, Ernie and Betty Morel’s Mildmay home captivates not only from the road but immediately once inside.

When the couple acquired the land in 2013, Betty stood out front with a vision of how she wanted the home designed to make the most of the beautiful country surroundings. It sits on approximately three-quarters-of-an-acre at the edge of town and provides the couple the seclusion and privacy they desire.

Both Ernie and Betty hail from Walkerton, and that’s what initially drew them back to the area after years of city living.

“When my husband retired from the Bank

of Montreal in Toronto we came up this way and bought a farm just outside of Mildmay,” Betty explains. They stayed there for 11 years before the farm became more maintenance than they desired.

“We actually built two homes there,” Ernie says. “The first we built as a guest house as a place we could come to on weekends when I was still working. And then we built what Betty referred to as her forever home.” *Continued on page 92*





However, moving wasn't out of the ordinary for the Morels, who have relocated 27 times, primarily due to the demands of Ernie's job.

"We did what we had to do to fix up the houses to our standards and then if another move came along, so be it," he explains.

"And if not, we were just content," Betty adds. "We've loved our homes, all of them."

With a keen eye for design, it's no wonder she was on board with moving house once more, and they soon sought **John Rutledge** of **John Rutledge Architect** to bring dreams to reality on their three bedroom, three bathroom home.

"I knew what I wanted," says Betty, a self-proclaimed magazine junkie who collects clippings of décor and design and then applies ideas she loves to her own spaces.

The home was built by **Ruetz Contracting**, which, along with materials from **Shouldice Designer Stone** and Tri-County Brick, created a visually appealing home accented by beautiful windows and doors from **Van Dolder's Custom Exteriors**. **Rob Poechman Siding** supplied and installed Foundry siding in the cedar shake profile as well as soffit, fascia and eavestroughs.

Entering the foyer, you are greeted by bright, open-plan living, designed and decorated to make the most of the home's back drop. Large windows shed light into the space, reflected by light fixtures new (**Living Lighting** and Restoration Hardware) and old, such as the crystal chandelier at the front door, a piece Betty has brought with her each move.

*Continued on page 95*



The smooth range top blends seamlessly into the countertop while the raised island seating provides a handy spot to conceal electrical outlets. **OPPOSITE, LEFT:** An up close look at the transom detail that frames the archways on the main level. A ceiling medallion highlights Betty's favourite chandelier. **RIGHT:** The functional and attractive beverage centre has a custom stained glass window as the focal.



## feature

It feels as though you're dining in the trees as windows on three walls offer views all around.



**TOP:** Ernie and Betty Morel in the sun soaked den. **TOP RIGHT:** A colourful rug from Elte anchors the space while the interior shuttered openings allows light to spill into the hallway. **ABOVE:** Small and purposeful injections of colour, pattern and texture through art, décor and collectibles allows each piece to be showcased and appreciated.



More light cascades into the living room from a beautiful stained-glass window, tastefully included in the custom bar area. There, you are greeted by a soft palette of greys and lilacs found on everything from the walls to the furniture.

Keeping the space minimal and free of clutter was very important to Betty, so storage was an essential component as she planned the main living area. It's an elegant setting adjacent to both kitchen and dining.

Her well thought-out plan ties the different rooms together seamlessly, allowing the kitchen space to function as just that, without the appearance of a traditional kitchen. Rather, she wanted to make it an extension of the living area for entertaining rather than solely a place to cook and store kitchen essentials.

A large pantry off the kitchen provides plenty of storage to keep items out of sight and out of mind. "I don't like clutter; I like quiet," she says. "I can't function if things aren't neat around me."

Hints of sparkle can be found in the studded dining room chairs, accessories and the gorgeous granite island, while the rest of the entertaining area is fresh and calming in design.

Betty admits she was nervous about the countertop (**Seedling Woodworks**) but proved the risk was worth taking as it complements the paint, sourced at **Home Hardware**, and décor throughout the house.

"I really mulled over it until I saw this piece and I fell in love with it and its colour," she explains. *Continued on page 96*



feature



Grand windows that look out onto the beautifully landscaped property (**Ground Effects Landscapes**) span the back of the main living area, and are completed with coverings from **Bruton's Decorating** and **House Rules Design Shop**. However, the blinds come down only during sunset, otherwise they wouldn't come down at all as the couple want to take full advantage of their view.

Two-toned coffered ceilings, also slightly tinted in grey, add to the warm living space, while Betty has created a gallery for local artists (**Susan Seitz**, **Paul Metcalfe** and **Rob Oosthoek**) on the walls throughout the home. Special pieces from around the world can also be found throughout, reminding them of travels abroad.

The main living space's design changed from its initial drawings, as Betty insisted the fireplace be moved to create more window space. This also allows the sofas to face people when they enter the home, which is a welcoming feature.

The first room down the hallway is the couple's den, separated by a large doorway and transom, providing repetition from the exterior windows and doors while adding a visually appealing design element.

Another distinctive feature is the California shutters placed in wall openings looking into the den, which brings much needed light into the hallway – and is an idea Betty had been holding onto for a long time.

The principal suite, a guest bedroom and bathroom can be found at the end of the hall, all harmonizing with Betty's colour scheme.

*Continued on page 98*



**ABOVE:** Mirror details, built-in side tables for storage and practical and accessible reading sconces create an inviting retreat at the end of the day. **TOP RIGHT:** The guest room is peaceful and serene with green and blue accents throughout. **RIGHT:** An inviting slipcovered chair and ottoman offer space to unwind in the principal suite.



**ROB POECHMAN SIDING**

**SIDING  
SOFFIT  
EAVESTROUGH  
FASCIA  
CAPPING  
CAULKING  
EXTERIOR  
INSULATION**

Vinyl & Aluminum Material Sales  
Free Estimates 519.901.0432 Office 519.367.2762 [poechmansiding.com](http://poechmansiding.com)

**TILED SHOWERS • AREA RUGS • HARDWOOD • CARPET • LUXURY VINYL & MORE!**



**Cuneo's**  
**CARPET ONE** FLOOR & HOME  
Decorating Excellence Since 1948

873 10th St., Hanover, ON  
207 Durham St., Walkerton, ON  
[www.cuneointeriors.com](http://www.cuneointeriors.com)  
**800-265-1172**



The stunning screen room with vaulted ceiling is a prime place to entertain family and friends on warm summer nights. The cedar shake siding by Rob Poechman Siding extends into the room.

Their principal bedroom has been decorated to feel bright and fresh and also designed from a magazine clipping Betty had been holding onto. Custom built-ins on either side of the bed allow for a clutter-free zone, as does the dressing room and spacious bathroom.

Back down the hallway, rustic river hemlock flooring ([Cuneo Interiors Ltd.](#)) leads to the pièce de résistance, the screened-in porch, just off the kitchen. This space was essential, as Betty and Ernie love to entertain. It's a place to enjoy everything from coffees at breakfast to Thanksgiving dinner.

"If I put windows out here, then I'd have to clean them," she laughs, noting it would remain a seasonal room.

Back inside, and through the pantry, you can access the mudroom and double garage before heading down a large, split stairwell.

"The way the house was built we had to have a lot of basement," explains Betty, who admits she rarely goes down as she is not a basement dweller.

She has only completed the bathroom, bedroom, laundry room and games room downstairs, leaving potential in the large space for future homeowners.

"It will make a great family home for someone one day," she says.

Her focus, rather, remains upstairs, where her dreams have come to life and everything has fallen into place.

And while Betty and Ernie enjoy the comforts of their 28th, and forever home, Betty continues to gather ideas and concepts with an open mind as you never know what the future brings. **OH**



LOCAL SOURCE GUIDE

- Balaklava Audio • Bruton's Decorating • Cuneo Interiors • First Line Security
- Gerry's Plumbing & Heating • Grey Bruce Interiors • Ground Effects Landscapes
- Hanover Home Hardware • House Rules Design Shop • John Rutledge Architect
- Living Lighting • Mildmay Home Hardware • Paul Metcalfe • Rob Oosthoek
- Rob Poechman Siding • Ruetz Contracting • Seedling Woodworks • Shouldice Designer Stone • Susan Seitz • Van Dolder's Custom Exteriors

ESTABLISHED 1989

THE GREAT LAKES Frame Company

*Exquisite handcrafted timber frame homes*  
519.794.0400 WWW.GREATLAKESFRAME.COM

Morning Sunshine

Afternoon Cool Down

PowerView® Motorization

It moves your shades, so you don't have to.  
PowerView® Motorization from Hunter Douglas is a remarkable system that moves your shades according to your schedule.\* Just program your personalized settings with your smart phone or tablet. Plus, it now integrates even more seamlessly with other home automation systems for a truly connected home. To see PowerView in motion, contact us today.  
PowerView Motorization is compatible with these and more:

**BRUTON'S DECORATING**

- Offering exclusive Alustra fabrics
- Para Paints dealer
- Custom canvas printing & framing

\*The PowerView App and additional equipment required for programmed operation.  
©2018 Hunter Douglas. All rights reserved. All trademarks used herein are the property of Hunter Douglas or their respective owners.7289357

**Bruton's Decorating**  
279 10th St  
Hanover, ON  
office@brutonsdecorating.com  
Weekdays 9 am - 6 pm  
Saturday 9 am - 4 pm  
**519-364-5080**  
**brutonsdecorating.com**

UNRIVALLED LANDSCAPE DESIGN & CONSTRUCTION  
519.364.5151 • GROUNDEFFECTSINC.CA





## GREY HIGHLANDS HOME AND COTTAGE SHOW

The Municipality of Grey Highlands in partnership with the Grey Highlands Chamber of Commerce, 92.3 The Dock and South Grey.ca is excited to be hosting the first annual **Home and Cottage Show** this April. The show will feature Grey Highlands and area businesses, interactive displays, speakers and educational seminars and children's programs. Over 100 vendors are expected including local trades, service providers and related businesses. We are very proud of the local businesses we have in our community and want to match these up with residents and visitors to provide a glimpse of what services are available to them locally. This is something we are really excited about and hope to continue each year.

The show is being held Saturday April 21st from 9:00 am – 4:00 pm at the Flesherton Arena. The arena floor, Flesherton Kinplex, parking lot and pavilion will all be used for the show allowing for indoor and outdoor displays.

For more information on the show, how you can get involved or be a volunteer, or to register as an exhibitor please call or email. **226.909.0668 ext. 102** [homeshow@greyhighlands.ca](mailto:homeshow@greyhighlands.ca) Exhibitor information including vendor information packages are available on [greyhighlandshomeshow.ca](http://greyhighlandshomeshow.ca) (Please see ad on pg 69)



## 2ND ANNUAL POSSIBILITY TOUR: FOUR UNIQUE KITCHENS PRESENTED BY HANOVER HOME HARDWARE

May 9th at, Hanover Home Hardware. Only 40 tickets available, \$90 each or \$150 per couple. All proceeds raised from the tour will directly support the Hanover & District Hospital Foundation.

Thinking about building or renovating your kitchen in 2018? This is a must tour. **Hanover Home Hardware** partners with Cabico cabinetry, Cambria countertops, Frigidaire appliances and Blanco sinks to present four unique kitchens, each meeting unique homeowner needs, styles, and project type.

Escorted to each home by limousine you will enjoy selected appetizers and wine geared to the homeowner's kitchen style. Store experts and corporate reps will be at each home to answer any questions that you may have. Participants will receive information folders and special discount coupons from participating vendor. Prizes awarded by draws.

Hanover Home Hardware Building Centre has been enhancing and evolving our product selections so we can offer our clients a true one stop experience for all lifestyles.

Proceeds generated from the 1st Positivity Tour helped with garden renovations benefiting the Day Away Program at the Hanover & District Hospital (above photo). **Hanover Home Hardware Building Centre**  
580 24th Ave, Hanover  
T: 519.364.3410  
F: 519.364.7184  
(Please see ad on pg 79)



## BRUTON'S DECORATING

Since 1992, **Bruton's Decorating** has been serving Grey, Bruce, Huron, and Wellington Counties including the Lake Huron shoreline from Goderich to Tobermory.

Offering the highest quality, most innovative window treatments from Hunter Douglas, including the exclusive Alustra line of shades, Bruton's Decorating invites you to explore the latest Hunter Douglas window fashions in their Hanover showroom where a large selection of blinds, shutters and shades including Power View motorization are on display. With professional installation for horizontal to vertical, shapes to arches, indoor or outdoors, commercial, residential or cottage, Bruton's has you covered! Book a free in-home consultation today.

Planning to build or remodel your deck or gazebo this summer? Inquire about Talus Habitat Gazebo Screens and Security Roll Shutters.

Bruton's also carries a wide selection of Para Paints in any color you can imagine, in many different finishes. Let their knowledgeable staff assist you with the perfect colour and feel for your home.

And why not display some of your memories on Canvas with Canvas Photo Art from Bruton's. Your photos, professionally printed up to 48" wide and stretched onto a custom size frame, all done in house in Hanover.  
**brutonsdecorating.com**  
(Please see ad on pg 99)

## LEON'S FURNITURE

5 TIPS FOR STAGING YOUR FURNITURE (BY JENNELLE W.)

### 1. Depersonalize

For staging your home, try removing all traces of your personal style. Going with neutral colours and natural light will help potential buyers envision their home and style rather than yours.

### 2. Love the Little Things

Rather than using bold paint colours or wallpaper choices try using smaller accent pillows, throw blankets and wall-art to add some character to the home.

### 3. Avoid Too Much Furniture

Too much furniture can make any room feel cramped and small. Try removing all the furniture from your room and put under half of it back in for the staging.

### 4. Create Envious Appliances

New kitchen appliances can bring a big return on your investment when selling a home. However if you don't have brand new smudge-proof appliances installed, make sure your old ones shine like new. Consider hiring professional cleaners for the kitchen alone.

### 5. Appeal to the Senses

A simple way of creating a nostalgic feeling is to bake a batch of cookies right before people visit your home. It creates a memorable smell that lingers as people look through your home. Who doesn't love cookies?

**Collingwood: 4473 County Rd 124 S | 705.445.6665**  
**Owen Sound: 1104 7th St E 519.376.8394 | leons.ca**  
BLOG: [helloyellowblog.ca](http://helloyellowblog.ca)  
f **Leon's Collingwood and Owen Sound**  
LeonsGeorgianBay  
(Please see ad on pg 9)



## MULCH-IT – SPECIALIZED LAND CLEARING & TRAIL CREATION

At **MULCH-IT** we assist our customers in creating outdoor spaces that allow them to completely enjoy their property. Getting people out on their land is what we've been doing for the past 10 years.

**Want a trail or system of trails on your property?** We do that too. Trails for running, ATV'ing, horseback riding, snowshoeing, or hiking with the family.

**Building a house?** We can clear your lot, acreage or farm.

**Have overgrown agricultural land?** We reclaim land and prepare for agricultural use or recreational use.

From clearing building lots; creating trails for all reasons and seasons; to reclaiming overgrown land – and everything in between – we value your land and your desire to utilize it to its full potential.

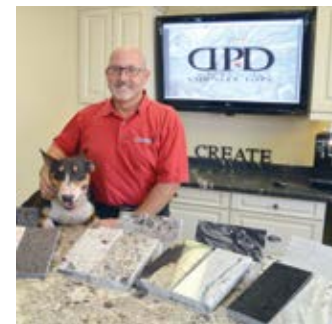
Give us a call today and let's get started creating spaces that are *Simply Yours to Explore*.  
**519.376.0002**  
**MULCH-IT.CA**  
(Please see ad on pg 35)



## LUXURIOUS COMFORT... JUST AROUND THE CORNER

Enjoy the luxury and comfort of our **Corner Cottage** located in Beaver Valley. Close to ski resorts and the Bruce Trail, you and your family will have plenty to do and see. Afterward, gather round to enjoy a wonderful meal in our gorgeous, open concept kitchen. Entertain friends or simply curl up by our cosy fire for a glass of wine. Pamper yourself by soaking in our well-appointed spa bathroom. And at the end of the day rest assured you and your family will have a good night's sleep in our luxury beds, nestled under beautiful linens. Our Corner Cottage sleeps 7 with one Queen, Double and Twin bed. Our Great Room sofa turns into an extra queen bed for two.

- Fully-equipped kitchen, granite counters, large fridge with icemaker, microwave, dishwasher, wine fridge, storage space
- Great Room with view over the Valley
- Master Bedroom: Queen Bed
- Spa Bathroom: Contoured Tub & Shower
- Guest Bedroom: Double & Twin Bed
- Guest Bathroom: Large Walk-In Shower
- 2 Professional Closet Systems – Master Bedroom, Bottom of Stairway
- 10 foot ceilings
- Wifi
- Minimum 2 nights stay

**519.378.3020**  
**cornercottage.ca**  
(Please see ad on pg 7)


## DI PIETRA DESIGN

**Please touch on your past 10-Year Milestones:** We are constantly finding new ways to evolve our products and pass along the value to our customers. The stone industry is forever changing and to date we have grown 250% making us the largest stone fabricator north of the GTA. We have grown from a one-man company to a state-of-the-art facility fully equipped with the latest CNC machinery and technology.

**What are your Success Secrets:** Everyone loves a good secret. But it comes down to hard work, dedication, and gratitude. Being great-full is the best attitude and I try to practice that every day.

**Where Were You Photographed and why is it important?** Our showroom is the heart of our facility. This is where our clients' design inspirations come to life. Our professional stone consultants are highly trained on all our selections and will help you find the perfect fit for your home.

**dipietradesign.com**  
**705.727.0096**  
**672 Welham Rd, Barrie**  
(Please see ad on pg 4)



## MAC TAYLOR CORPORATION

Over 30 years of trusted experience in Simcoe and Grey Bruce counties.

### SEPTIC SYSTEM SOLUTIONS:

**Mac Taylor** is this area's premier designer of conventional and advanced septic systems. We handle soil sample collection, permit application as well as the design and installation of your new septic system. Mac Taylor will come to your home to meet with you and talk about your septic system needs. Whether it is a new build or a replacement system, we will provide you with the right product and advice for your unique situation and needs.

**RAINWATER HARVESTING SYSTEMS:** Mac Taylor once again leads the way by offering the "Rainwater Harvesting" systems from GRAF. A rainwater harvesting system collects rain water, filters it and stores it for a "not so rainy day". With the price of water rising, and the fluctuating water tables, it just makes sense! Now you can water your lawn and gardens with pure, natural rainwater. Waste not, want not.

**NEW HOME SITE PREPARATION SERVICES:** Mac Taylor also provides a full range of site clearing and new home site preparation services for your new construction or addition project.

Trust Mac Taylor to get the job done right.  
**519.794.2380**  
**mactaylor.com**  
(Please see ad on pg 77)





## EXQUISITE WOOD DESIGNS

Here at **Exquisite Wood Designs Inc.** our Primary focus is on quality and integrity. Whether you are building or renovating, our experienced staff will guide you through the design process and turn your vision into a one-of-a-kind piece for your home.

Our process is easy. Just bring your plans or rough dimensions and we'll start designing. There is no guess work when it comes to how your final project will look! Our state-of-the-art 3D software will bring your space to life. We'll then set up a meeting with you to review all possibilities of the designs. Finally a tour through our showroom to start selecting from the variety of materials that will ultimately become the finished product.

We work with, and design, all kinds of styles. From modern to traditional, and everywhere in-between. Our expansive showroom houses rooms of samples, door design, countertop materials, hardware and accessories. All the details that will make your custom piece unique to you.

We're continually bringing in new products and innovations, and coming up with new ideas. **If you are looking to get creative, stop by our showroom at 1980 20th St E, Owen Sound, or call us to set up an appointment 519.370.0808 ewdesigns.ca**

(Please see ad on pg 67)



## MACDONALD'S FURNITURE & APPLIANCES

Considering a new mattress?

*In 2018 there's no reason to sleep on a mattress that doesn't make you 100% comfortable.* – Greg Macdonald

Once upon a time, you'd buy the best mattress you could afford and live with its imperfections for years. But that was before we really understood the importance of a good night's sleep. The benefits to your health, and even your productivity can be easily measured. When you don't sleep well, the entire next day can be a write-off.

Technology has changed a lot in the last decade. Different mattresses have been designed to address different sleep issues. For example, Tempur-Pedic Foam eliminates pressure points, while continuous-coil has been shown to reduce back pain.

You've probably heard about adjustable beds and what a difference they can make at any stage in life. Having the option to raise the head, feet or both allows you to be extra comfortable without needing to pile up the pillows.

The good news is the prices have fallen significantly since they were introduced. Today an adjustable base is available with nearly any mattress combination. This puts a completely variable sleep solution in the hands of anyone, not just the rich and famous.

**1.800.265.3172 macdonaldsfurniture.com**

(Please see ad on pg 26)



## MCCANN WATER SYSTEMS

**McCann Water Systems** has new owners! However, they are not new to the business of providing quality water for homes, farms, and businesses.

Simon Smith, founder of S.D. Smith Drilling Co. Ltd., has been a well driller throughout Ontario for over 55 years. Smith Water Systems Inc., managed by his daughter Julie, has been serving southwestern Ontario from their Erin location for over 15 years. In 2004 Simon co-authored the book 'Well Wise', a comprehensive consumers guide for private water wells.

Also 'Aqua's Water Well Adventures', a book intended to teach children about the water cycle, groundwater, and wells. Water is one of our most valuable natural resources!

Now as the new owner of McCann Water Systems, Simon, his wife Patty, and Bob Manzer are looking forward to providing prompt professional service for all your water needs.

**For pumps, well service, and water treatment, please give us a call 519.986.4743**

**mccannwatersystems.ca**

(Please see ad on pg 109)



## THERMAFIBER: PROVIDING COMFORT FOR THE HOME

**NEW Owens Corning**

Thermafiber® Mineral Wool Insulation provides fire resistant, thermal and acoustical solutions, perfect for residential new build and home renovation projects.

Thermafiber® residential mineral wool blankets are ideal for insulating walls, floor/ceilings, and attic spaces in homes. These products provide a high R-value/inch, excellent sound attenuation characteristics and outstanding fire performance. Products are also inorganic, non-combustible, and mould resistant.

Thermafiber® products conserve energy and provide a minimum 70% pre-consumer recycled content.

Why choose Thermafiber® Mineral Wool Insulation?

- Fire resistant to temperatures above 1,093° C (2,000° F)
- Minimum 70% recycled content
- Easy to cut and install
- Secure cavity fit
- Mould resistant

Thermafiber® UltraBatt™ mineral wool insulation also makes homes energy efficient and Thermafiber® Fire & Sound Guard™ insulation is designed to provide enhanced acoustical control plus fire resistance all in one product. Ask for these products by name and enjoy the comfort.

**To learn more about Thermafiber® Mineral Wool Insulation visit thermafiber.ca**

(Please see ad on pg 5)



## PORT ELGIN ANTIQUE & COLLECTIBLES SHOW – 42<sup>ND</sup> ANNIVERSARY

Looking for that unique piece to add to your home décor, collection or dining table with a vintage flair? Enjoy a day searching through timeless and rustic treasures of books, vintage clothing, tools, figurines, glassware, silverware, porcelain, memorabilia, collectibles, quilts, Persian Carpets, jewellery, postcards, pottery, china, furniture and much more! Expert vendors and dealers provide an extensive range of quality antiques and collectibles.

Rain or shine, it is worth the drive to Saugeen Shores with friends and family to explore the craftsmanship of artisans from days gone by. Save room for lunch! Anglican parish members have a very popular café with hot entrees made from scratch, including desserts. Our Rhubarb Punch is a favorite to all who visit!

On Friday, July 20 from 10am-7pm and Saturday July 21 from 10am-4pm find us at The Plex, 600 Tomlinson Drive, Port Elgin, ON N0H 2C0.

Admission fee \$8 for both days, so come early!

Sponsored and fundraiser by St. John's Anglican Church, in Port Elgin. All proceeds go back to the community.

Featuring approximately 38 vendors; new vendors/dealers are welcome!

**Barb Purcell: purcell@bmts.com**  
**Hope Wallace Alvarez: alvarezb@bmts.com**

(Please see ad on pg 111)



## VAN DOLDER'S HOME TEAM CUSTOM EXTERIORS THE HOME TEAM IS GOING GREEN!

Replacing the windows and doors with Energy Efficient models just makes sense. And right now, through the Green Ontario Rebate Program, you can receive a rebate of \$500 per window up to \$5,000 when you replace your windows with high performance ENERGY STAR® windows. As an Approved Participating Contractor in the Green Ontario Rebate Program, we can assist you in completing all the necessary steps needed for the application process.

ENERGY STAR rated windows can • increase your comfort by reducing drafts • cut down outside noise levels • control condensation • alleviate premature deterioration and maintenance costs • reduce ultraviolet rays passing through glazed areas • better protect your décor from sun damage • decrease summer cooling costs

You can visit our showroom in Owen Sound or Collingwood and talk with one of our Team members for more details.

Opening Soon in Collingwood – **Van Dolder's Home Team's** newest 18,000 square foot village-style showroom. You'll see some of the best quality windows, doors, siding, decking, awnings, eaves, gutters, garage doors, and finishing touches up close and in use. Remember, if it goes on the outside of your house, you'll find it on the inside of ours.

**Collingwood | Owen Sound vandolders.com | 800.530.0735**  
(Please see ad on pg 10)



## HOME & COTTAGE EXPO

Walking into the **Home & Cottage Expo** in Owen Sound can be best described as walking into a real-life Google search for "everything to do with the inside and outside of my house or cottage in the Grey Bruce Simcoe and Huron area." Whether building, selling, buying, renovating or just looking for some Pinterest-worthy ideas to bring to your home, this event will inspire and ignite excitement within visitors.

After more than 20 years under the guiding hand of its three host partners, the Home & Cottage Expo is well-established as the only truly regional home show in the area, drawing exhibitors and visitors from throughout Southern Ontario and the Georgian Bay area. Meet contractors, interior designers, landscapers, home improvement specialists, outdoor recreationalists, consumer electronics suppliers, and much more – all in one convenient location.

New this year, each visitor will also have the chance to win a cash prize, no purchase necessary, by visiting select booths listed on the new Home & Cottage Expo-dition Prize Passport. Check out the Home & Cottage Expo at the Bayshore Community Centre in Owen Sound on Saturday, April 28th and Sunday, April 29th, presented by Grey Bruce Patio Enclosures.

**Visit homeandcottageexpo.com for more details**  
(Please see ad on pg 16)



## WESTSIDE NURSERIES

Our nursery is a fifty-four year and three generation family-owned business. We are a full service, year-round garden centre with a very knowledgeable staff, growing our own annuals and perennials. All our nursery stock is grown in Ontario.

For all your horticultural needs, we carry a large selection of bulk material and a unique assortment of garden accessories.

Need to spruce up your deck? Come in and check out our variety of outdoor furniture ranging from all-weather wicker to recycled plastic.

At **Westside** we pride ourselves on offering a clean and comfortable environment for our clients to browse in.

Don't have a truck? No worries. We offer delivery for all our products.

When it comes to our landscaping service, our certified landscape technicians and award-winning stone crew can handle any project. Retaining walls, paving stones or natural stone to name a few.

Hoping for a greener curb appeal this season? We offer sod installation and hydroseeding and specialize in plant material installation. Our landscape designer is always on hand to help you with your vision.

Westside has been servicing Owen Sound and area for over five decades. We understand this area's conditions and can help you to choose the perfect plant material.

**Call us today for a free consultation, concept to design: 519.376.6521 westsideowensound.com**  
(Please see ad on pg 51)



# BLACKBERRY SHORTCAKE

*with BOURBON CARAMEL*

Go above and beyond with this modern upgrade to an old classic: the shortcake. Light sponge cake is layered with mascarpone whipped cream and topped with decadent blackberries with a hint of bourbon.



NEW  
TAKE  
ON AN OLD  
CLASSIC

RECIPE AND PHOTOGRAPHY  
**JENELLE MCCULLOCH**

## *Sponge Cake*

For this super simple sponge cake you will need two 6-inch round baking pans.

### INGREDIENTS

- 5 large eggs at room temperature
- 1 cup + 1 Tbsp cake flour, sifted
- ½ cup + 1 Tbsp granulated sugar
- pinch of salt

### DIRECTIONS

Preheat oven to 340°F. Butter and flour sides and bottoms of baking pans. Cut out two 6-inch rounds of parchment paper and line the bottom of each pan. Set aside.

In the bowl of a stand mixer, combine eggs, sugar and salt. With the whisk attachment, beat on medium/medium-high speed for 15-20 minutes until pale and fluffy. The mixture will be firm and will form soft peaks when ready. In batches, slowly sift in flour and carefully fold the mixture by hand to combine. Be careful not to overwork and deflate the batter.

When combined, divide the mixture evenly in the two prepared pans and bake for 25-30 minutes. Be careful not to open the oven as the cakes may deflate. The cakes are done when an inserted toothpick comes out clean. Turn off oven. Leave cakes to cool inside the oven for 5-10 minutes with the door propped open. Remove from oven and let cool for another 10 minutes before removing from pans and inverting them onto a rack to fully cool.

## *Blackberries in Bourbon*

### INGREDIENTS

- 2 cups fresh blackberries
- 1 Tbsp bourbon
- 2 Tbsp maple syrup

### DIRECTIONS

Combine ingredients in a saucepan. Heat over medium until blackberries begin to render their juices. Chill until ready to use.



## *Bourbon Caramel*

### INGREDIENTS

- 1 cup sugar
- ½ cup water
- ½ cup heavy cream
- 1 Tbsp butter
- 1 Tbsp bourbon
- Pinch of salt

### DIRECTIONS

In a saucepan over medium heat combine sugar and water. Do not stir, but let sugar dissolve and come to a simmer. Simmer until syrup is a golden, amber

colour. Swirl the mixture in the pan if necessary to ensure all of the sugar is dissolved and caramelized.

Remove from heat and whisk in heavy cream. Lower heat to medium-low and return pan to burner. Continue to stir the caramel for another 2-3 minutes.

Remove from heat, add butter and stir. Add the bourbon and salt, stirring again.

Transfer to a heat-safe container to cool. The caramel will thicken as it cools.

## *Mascarpone Whipped Cream*

### INGREDIENTS

- ½ cup mascarpone cheese
- ½ cup superfine sugar
- 1 tsp vanilla extract
- 1 cup whipping cream

### DIRECTIONS

Combine mascarpone cheese, sugar and vanilla in a small bowl.

In the bowl of a stand mixer, whip whipping cream until light and fluffy.

Slowly add cheese mixture to whipped cream while the mixer is still running. Mix until combined.

### TO ASSEMBLE THE CAKE

Layer sponge cake with whipped mascarpone and top with blackberries. Drizzle with bourbon caramel to finish. Serve cake soon after assembly for best results and cut with a serrated knife – the cake is very delicate. **OH**



**online** Get more recipes at [ourhomes.ca/mag/cook](http://ourhomes.ca/mag/cook)

## » SOURCE IT

THE NEW, NEAT, UNIQUE, AND FABULOUS  
IN GREY & BRUCE COUNTIES



### **HAROLD SUTHERLAND CONSTRUCTION LTD**

Established in 1960, **Harold Sutherland Construction Ltd.** has continuously grown and evolved into a diversified company. Over the past 58 years, Harold Sutherland Construction Ltd. has gained a solid reputation in construction and aggregate excellence.

Municipal and Ministry of Transportation highway jobs, sewer and water main projects, and hot mix asphalt tasks are a few of the many types of work that Harold Sutherland Construction Ltd. involves itself in. Today, the company operates over 20 licensed pits and quarries throughout Grey and Bruce Counties and Manitoulin Island.

It operates a Ready Mix Concrete plant and a Hot Mix Asphalt plant and has over 300 pieces of equipment and vehicles working around Grey and Bruce Counties.

The company also has 13 serviced building lots for sale in the Township of Georgian Bluffs, just minutes from Legacy Ridge and Cobble Beach Golf Clubs. Looking to build your dream home? Please call and find out more about each of these beautiful lots with views of Georgian Bay.

The great dedication, hard work and support of employees and colleagues has enabled the company to provide dedicated service and support to the community.

We look forward to a busy construction year so call us to discuss your summer project. **hsc-ltd.com | 519.376.5698**

*(Please see ad on pg 55)*



### **ELEGANT SOLUTIONS SLAB GALLERY**

Starting a new build or renovation project? Book an appointment at **Elegant Solutions Slab Gallery**, featuring over 50 full slabs of Cambria Quartz. The Slab Gallery is the only one of its kind in Ontario, a great place to begin your search for that perfect countertop for your kitchen or bath. The gallery is a fantastic space to visualize, design, inspire, to bring all your selections together. Roll out your floor plans on our jumbo slab boardroom table or scroll through your options on the video monitor. We also offer a full working kitchen.

Viewing a full slab of quartz takes the guess work out of what you will actually receive at time of installation. Typically, these decisions are made from a 12x12 sample or smaller, but with the veining, movement and colour that Cambria offers it's best to see these art pieces in their full glory. Cambria currently holds 140+ designs within their palette. The Gallery displays those designs with the most movement, ranging from bold to contemporary, and timeless classics. Cambria also offers subtle solids and more uniformed designs that are complimentary to their other selections.

Call your Designer or Builder today to book your tour. **705.797.0114**  
**info@elegant-solutions.ca**  
**elegant-solutions.ca**  
*(Please see ad on pg 14&15)*



directory

OUR HOMES attracts the area’s finest businesses to advertise in our pages, and utilize our unparalleled distribution and coffee-table appeal to market their products and services. We’re making it easier for you, our readers, to become educated as you plan your home- and real estate-related purchasing decisions. View these business ads online at [ourhomes.ca/greybruce](http://ourhomes.ca/greybruce). The listings below are organized alphabetically by industry.

ACCOMMODATIONS

Corner Cottage, 7, 101

ALTERNATIVE ENERGY

Blackline Power, 83

APPLIANCES

Leon’s, 9, 100  
Macdonald’s Furniture & Appliances,  
26, 102  
Square Deal Neil’s TV & Appliances, 35

AQUACULTURE

Silver Creek Aquaculture Inc. 109

ARCHITECTURAL STONE

Shouldice Designer Stone, 39

ART/ARTISANS/ART GALLERIES,  
STUDIOS & WORKSHOPS

Light House Photo Gallery, 22

BUILDERS

Candue Homes, 16  
Dennison Homes, 47  
Great Lakes Custom Homes, 39  
Hanover Home Hardware, 79, 100  
High R Construction, 81  
Snyder Development, 2  
The Great Lakes Frame Company, 99  
Valley Home Improvements, 111  
Warton Home Design Centre, 49

BUILDING/LANDSCAPE SUPPLIES

Centre Grey Building Supplies, 107  
Flesherton/Markdale Home Hardware, 107  
Hanover Home Hardware, 79, 100  
Moggie Valley Timber Inc., 35  
Warton Home Design Centre, 49

CABINETS & MILLWORK/  
FINE WOODWORKING

Bruce County Custom Cabinets, 47  
Exquisite Wood Design, 67, 102  
The Woodworm, 109  
Topnotch Furniture, 116

CLEANING

Maid in the Valley, 55

COUNTERTOPS/GRANITE & STONE

Di Pietra Design, 4, 101  
Elegant Solutions/Cambria, 14&15, 105  
The Old Barn, 25

DECKING

Postech Grey Bruce, 16

EXCAVATING/SITE PREP/SEPTIC

Mac Taylor Corporation, 77, 101  
Mulch-It, 35, 101

FARM SUPPLIES & MACHINERY

Stoltz Sales & Service, 77

FENCING AND GATES

Built Wright Fencing, 81

FINE WOODWORKING/CUSTOM  
FURNITURE/CARPENTRY

Wood is Good, 69

FIREPLACES & STOVES/  
HEATING & COOLING

Air Tech Mechanical, 20  
Chantico Fireplace Gallery, 11  
Pratt Plumbing and Heating, 109  
Sandy Hamilton Plumbing &  
Heating Inc., 77  
South-Port Mechanical Geothermal, 12  
The Fyre Place & Patio Shop, 31, 81

FITNESS & SPAS/WELLNESS

Legge Fitness Superstores, 21

FLOORING, STAIRS & TRIM

Cuneo Interiors Ltd., 97  
Moggie Valley Timber Inc., 35

FLORISTS

Serendipity Florals, 109

FOOD/DRINK/CATERING

Top of the Rock, 107

FURNITURE/HOME DÉCOR/  
GIFTS/COLLECTIBLES

Barebirch, 111  
Bruton’s Decorating, 99, 100  
Country Charm, 17  
Grey Bruce Paint & Décor, 89  
Hanover Home Hardware, 79, 100  
House Rules Design Shop, 89  
Inside Ideas, 31  
Kountry Kat Mennonite Furniture, 109  
Leon’s, 9, 100  
Macdonald’s Furniture & Appliances,  
26, 102  
Pellow Pharmasave, 31  
Smitty’s Fine Furniture, 115  
The Fyre Place & Patio Shop, 31, 81  
The Rusty Star, 31  
Topnotch Furniture, 116  
Warton Home Design Centre, 49

GARDEN CENTRES

Maxwell Garden Center, 69  
Westside Nurseries & Greenhouses Ltd.,  
51, 103  
Yesterdays Garden Centre  
Landscaping & Construction, 69

GEOTHERMAL

Sandy Hamilton Plumbing &  
Heating Inc., 77  
South-Port Mechanical Geothermal, 12

GREEN LIVING

Blackline Power, 83

HOME IMPROVEMENT/RENOVATIONS

Great Lakes Custom Homes, 39  
Valley Home Improvements, 111  
Van Dolder’s Custom Exteriors, 10, 103

HOME ORGANIZATION

Wilson Solutions, 58&59

HOT TUBS/POOLS/SAUNAS

The Water Store, 53  
Water & Wellness, 13

INSULATION

High R Construction, 81  
Owens Corning, 5, 102

INTERIOR DESIGN/HOME STAGING

CR Designs, 27  
Cuneo Interiors Ltd., 97  
Décor Design, 20  
House Rules Design Shop, 89  
K-Interiors, 47  
Tamarisk Interior Design, 37

KITCHEN AND BATH

Bruce County Custom Cabinets, 47  
Elegant Solutions/Cambria, 14&15, 105  
Exquisite Wood Design, 67, 102  
Hanover Home Hardware, 79, 100  
House Rules Design Shop, 89  
Warton Home Design Centre, 49

LANDSCAPING/LAWN & GARDEN

Ground Effects Landscapes, 99  
Hutten & Co. Land and Shore, 3  
Land & Stone, 113  
Peninsula Out of Doors, 53  
Rocksolid Landscapes, 8  
Westside Nurseries & Greenhouses Ltd., 51, 103  
Yesterdays Garden Centre  
Landscaping & Construction, 69

LIGHTING & ELECTRICAL

Living Lighting, 19

MOVING & STORAGE

John Thompson Movers, 109

NEW HOME COMMUNITIES

Sutacriti Heights – Harold Sutherland  
Construction Ltd., 55, 105  
Snyder Development, 2

OUR HOMES is committed to ensuring the businesses below appear under the correct headings. To make a correction, or to have your business listed under more than one heading, please email [bettyann.fawcett@ourhomes.ca](mailto:bettyann.fawcett@ourhomes.ca). To have your business listed in our Home Resource Directory, call us to advertise at 519.986.2599.

OUTDOOR FURNITURE

Maxwell Garden Center, 69

OUTDOOR STRUCTURES

Maxwell Garden Center, 69

PAINTING & DECORATING

Benjamin Moore, 6  
Cuneo Interiors Ltd., 97  
Grey Bruce Paint & Décor, 89

PAINTING, PRIMING, BLASTING  
& STAINING

Custom Soda Prep & Paint, 33  
Paint & Woodcare Co., 33  
Premier Industrial Painting, 37  
TNT Dry Ice Blasting, 33

PHOTOGRAPHY

Light House Photo Gallery, 22

PLUMBING

Carson Supply, 49  
McCann Water Systems, 102, 109

Pratt Plumbing and Heating, 109  
Sandy Hamilton Plumbing &  
Heating Inc., 77

POND MAINTENANCE

Silver Creek Aquaculture Inc. 109

REAL ESTATE

Chestnut Park, 23  
Coldwell Banker Lifestyles Realty –  
Brandon Vanderschot, 19  
Harold Sutherland Construction Ltd., 55, 105

SIDING

Rob Poechman Siding, 97

SOFFIT, FASCIA & EAVESTROUGH

Rob Poechman Siding, 97

SPECIAL EVENTS

Grey Highlands Home Show, 69, 100  
Home & Cottage Expo, 16, 103  
Port Elgin Antique & Collectibles Show,  
103, 111

STONE PRODUCTS

West Shore Stone & Brick Inc., 49

WATER TREATMENT

McCann Water Systems, 102, 109  
The Water Store, 53

WINDOW FASHIONS

Bruton’s Decorating, 99, 100  
Budget Blinds of Owen Sound, 53  
Cuneo Interiors Ltd., 97  
Décor Design, 20  
Inside Ideas, 31  
Pellow Pharmasave, 31

WINDOWS & DOORS

Van Dolder’s Custom Exteriors, 10, 103

The Municipality of Grey Highlands The place for all seasons!

FLESHERTON/MARKDALE  
HOME HARDWARE



Markdale and Flesherton Home Hardware for all your paint, plumbing, electrical, hardware, household and outdoor needs. Markdale now carrying a wide selection of safety footwear with the best brands at great prices. Come in and check out our new product lines. As always, our friendly staff are here to help.

Markdale  
519.986.3011  
[markdalehomehardware.ca](http://markdalehomehardware.ca)

Flesherton  
519.924.2430  
[fleshertonhomehardware.ca](http://fleshertonhomehardware.ca)

CENTRE GREY  
BUILDING SUPPLIES



Your one stop home building and improvement store. We carry lumber, insulation, plumbing, electrical, panelling, roofing, handtools, paint, windows and doors. Free delivery and estimates.



74 Lorne St., Markdale  
519.986.2641  
1.800.461.7093

TOP O'THE ROCK



Everything you need in 1 stop  
Groceries – Deli – Bakery  
• Rotisserie Chicken & Wings  
**WEDNESDAY NITE WING NITE**  
**\$7<sup>99</sup>/lb & \$15<sup>00</sup>/2 lbs**  
• The BEST GOURMET pizza  
Every Order Custom Made!  
• Caring Staff • Quick Lunches  
Breakfast Bagels made to order.  
*We hold ourselves to a higher standard.*  
**YOURS!**  
Open Daily 7:30 a.m.

Grey Road #13  
Eugenia  
519.924.3244 519.924.3185



online Discover more DIY projects at [ourhomes.ca/mag/create](http://ourhomes.ca/mag/create)

PROJECT EMIL MAKKAR  
PHOTOGRAPHY JASON HARTOG

# PLANTER BOX LADDER

GROW UP INSTEAD OF OUT! A VERTICAL GARDEN IS A GREAT WAY TO LAYER TEXTURES AND ADD DIMENSION IN YOUR OUTDOOR SPACE. PLANT PRETTY FLOWERS, NURTURE A VEGETABLE PATCH OR CULTIVATE A KITCHEN GARDEN.

Continued on page 110

## » Marketplace

To order a listing in Marketplace, please contact:  
Betty Ann Fawcett | 519.986.2599 | [bettyann.fawcett@ourhomes.ca](mailto:bettyann.fawcett@ourhomes.ca)

### Serendipity Florals

FLOWER FARM

519.371.4881

424073 Taylor Sideroad, Kemble, On



*McCann Water Systems*  
a div. of SD Smith Drilling Co. Ltd. *Serving Ontario for Over 55 years!*

We specialize in...

well pumps  
well maintenance  
well decommissioning  
well rehabilitation  
well flow test  
iron removers

water softeners  
filters  
UV disinfection  
reverse osmosis  
mini excavator & trenching  
seasonal water maintenance



For complete water system installation or maintenance call or visit  
**519.986.4743 • [mccannwatersystems.ca](http://mccannwatersystems.ca)**

### JOHN THOMPSON MOVERS

The Area's Premier Moving  
Company For Over 50 Years

- Local • National
- Worldwide Moving
- Competitive Pricing
- Professional Service
- Temperature Controlled Storage
- Public Self Storage



**519.376.7613 • 1.800.567.5354**  
[johnthompsonmovers@jtmovers.com](mailto:johnthompsonmovers@jtmovers.com)



*Delivering Innovative  
Solutions in Wood*

Mantels | Cabinets | Wall Units  
Audio Visual Systems | Storage Units  
Home Office Workstations | Murphy Beds  
Kitchen Renos | Stone/Tile Backsplashes

THE  
**WOODWORM**

317542 Hwy 6 & 10, Owen Sound  
519-376-6323 | 416-525-7814  
[www.thewoodworm.com](http://www.thewoodworm.com)

### KOUNTRY KAT

UNIQUE SOLID  
WOOD CREATIONS

Chain saw art and  
vintage accents

157 Garafraxa St. S. Durham  
226.432.3005

**kountrykat.com**



**PRATT**  
PLUMBING AND HEATING

AIR CONDITIONING • WATER SYSTEMS • FIREPLACES

**519-369-3411**

We pride ourselves on offering the highest value  
on all the products we service & install.

### SPRING TIME IS Pond Time!

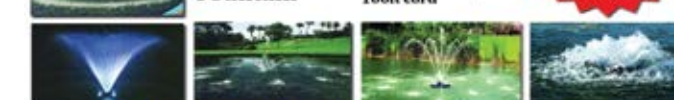
BASS AVAILABLE AFTER JULY 1  
TROUT SIZES FOR POND STOCKING:  
4-6" Trout 6-8" Trout 8-10" Trout 10-12" Trout 12"+ Trout  
Order early for best selection. Avoid disappointment!

**KOENDER WINDMILLS**  
16FT WINDMILL • 20FT WINDMILL  
24FT WINDMILL  
**DELUXE PACKAGE**  
INCLUDES AIRLINE, AIRSTONE,  
CHECK VALVE PLUS - FREEZE CONTROL,  
TILT PACKAGE, 50" WEIGHTED AIRLINE,  
DECOR DUCK & 4L NATURE'S POND  
CONDITIONER  
12FT POSTER COATED  
WINDMILLS  
for smaller ponds  
COLOURS:  
RED/WHITE,  
GREEN/YELLOW,  
BRONZE  
COMPLETE WITH AIRLINE,  
AIRSTONE

**POND AERATION**  
adding oxygen to improve your pond

**AQUA CONTROL EVOLUTION**  
6 Pattern Fountain  
1/2 HP high volume,  
GPI timer, 115V,  
100ft cord

BUY BOTH  
AERATOR &  
LIGHTS  
AND SAVE!



### POND MAINTENANCE ESSENTIALS

AQUATIC WEED ERADICATOR  
NETS  
NATURE'S POND CONDITIONER  
Clears water and improves it's quality.  
TRUE BLUE  
Blocks sunlight.

### POND CONSULTATION HELP

WE KNOW PONDS!  
WE PROVIDE LONG TERM, NOT TEMPORARY, SOLUTIONS.  
2 PROFESSIONAL BIOLOGISTS WITH 70 YEARS EXPERIENCE.  
ON-SITE POND CONSULTATIONS AVAILABLE.  
SOLVE ALGAE, WEEDS, ODOR & OTHER POND PROBLEMS.  
CALL US FOR GREAT POND ADVICE

**SILVERCREEK AQUACULTURE**  
Erin, Ontario - 519.833.2559 [www.silvercreekponds.com](http://www.silvercreekponds.com)  
TAKE ADVANTAGE OF OUR GREAT PRICING. BUY NOW!



## crafty ideas

Customize the height of the ladder to suit your space. These step-by-step instructions create a two-planter ladder.

### TOOLS & MATERIALS

Two 6-foot, 1-by-6-inch cedar planks (each 6-foot plank will make one planter box)

One 8-foot, 2-by-6-inch cedar plank

Mitre saw

120-grit sandpaper

Nail gun or hammer and nails

2-inch galvanized wood screws

### HOW-TO

#### Cut box fronts, backs and bottoms:

From each 6-foot plank, cut two 24-inch lengths to be used for the front and back of the planter box, and one 21-inch length for the bottom.

**Cuts box ends:** Set your mitre saw to 15 degrees. Take the 2-by-6 plank and cut the end 15 degrees. Flip the board and measure 5-1/4 inches along the short edge and cut again with the 15-degree mitre. This will create one end of the planter box. Proceed until you have the four ends cut.

**Cut ladder rails:** From the remainder of 2-by-6, one end will already be cut at 15 degrees. Measure your finished ladder height (in this case we chose 3 feet for the two-box ladder) and make a cut at 15 degrees along the same angle for the first rail. Repeat for second rail and cut it

to match. To have the back of your ladder sit flush against a wall, measure 2 inches in from the pointed upper tip of each rail and cut perpendicular to the 15-degree surface.



ladder rails

**Construct planter boxes:** Sand all freshly cut edges to smooth out roughness. Place end pieces long-side down. Place the 24-inch front and back pieces flush against end pieces and nail together. Flip the box right-side up and drop the 21-inch bottom in. Secure the bottom by nailing it to the sides. Repeat for each box.



**Construct planter box ladder:** Lay the ladder rails on the floor and place your planter boxes between the rails at the desired height. Secure planter boxes to the ladder by drilling two-inch screws from inside the planter boxes to the ladder.



**Display and grow:** Place finished planter box ladder against a wall, fence or deck, fill with potting soil and get growing! **OH**



bare birch  
casual, cozy, boutique interiors

975 2nd avenue east, owen sound  
226-664-2273 | www.barebirch.ca

**VALLEY**  
HOME IMPROVEMENTS

Residential Construction • Project Management  
Kitchen & Bathrooms • Additions & Garages  
Siding, Soffit & Fascia • Renovations & More

*All the expertise  
you need,  
under one roof.*

Valley Home Improvements offers reliable, quality workmanship for any budget. After years of experience, from building decks to building homes, we've acquired the knowledge and skills to tackle *any* home renovation. Big or small.

Planning to renovate? Feeling overwhelmed?

Give us a call.

We'll be happy to sit down with you and discuss your options.

519.924.0025

valleyhomeimprovements.ca

## PORT ELGIN ANTIQUE & COLLECTIBLES SHOW

Antique furniture, quilts, vintage clothing, glassware, etc.

Café with fresh lunch & homemade pies

Collectible Show includes great vintage/antique dealers



Friday, July 20 10am-7pm  
Saturday, July 21 10am-4pm

at The Plex, 600 Tomlinson Dr., Port Elgin

Admission \$8 for both days  
Sponsored by St John's Anglican Church

Follow us on Facebook!

More info, contact purcell@bmts.com  
or alvarezb@bmts.com





# take it OUTSIDE

Hello spring! As the temperature rises, so does our desire to get out and stay outside. Get your deck, patio and yard ready for entertaining in style with these great finds.



## CONGREGATE

CREATE A RELAXED AND COMFORTABLE SETTING FOR GREAT CONVERSATION.



## DINE

GATHER AROUND THE TABLE AND ENJOY A MEAL OR DRINKS WITH YOUR FAVOURITE PEOPLE.



## ILLUMINATE

SET THE MOOD WITH THESE FUN OUTDOOR LIGHTING OPTIONS.

ABBOTT: Bird Nest Votive with Stake

## COOK

CREATE MOUTHWATERING FOODS FOR YOUR GUESTS WITH THESE OUTDOOR COOKING ESSENTIALS.



## PLAY

ENJOY SOME FRIENDLY COMPETITION WITH AN OUTDOOR GAME!



Landscaping  
*naturally*

Design Build

Dry Stone  
Construction

- entrances
- patios
- walls
- stairs
- water features
- night lighting
- gardens
- fire features
- stone artwork



finishing touch



PROJECT **EMIL MAKKAR**  
PHOTOGRAPHY **JASON HARTOG**

# chalkboard SERVING TRAYS

Add flair to your next function with a custom serving platter. Whether you are serving crudité's or gourmet treats, it's a fun and functional way to add a personal touch your guests will love.

**online** Discover more DIY projects at [ourhomes.ca/mag/create](http://ourhomes.ca/mag/create)

**MATERIALS**

- 12-by-48-inch pine project board
- 120/220/320 grit sandpaper
- Two-inch painter's tape
- Chalkboard spray paint
- Minwax Wood Finish stain of your choice (we used Early American for our project)
- Staining rag
- Handles of choice and fasteners (we used drawer pulls)

**HOW-TO**

- Sand both sides of the 12-by-48-inch project board using 120-grit sandpaper.
- Wipe the surface with a lint-free rag, and sand both sides again with 220-grit sandpaper. Repeat with 320-grit sandpaper.
- Using a staining rag, stain both sides of the board and let dry. For a deeper colour, add a second coat of stain.
- Once the board is dry, use the painter's tape to mask off the perimeter and edges of the board to create a border that will remain unpainted.
- Spray with chalkboard paint in even strokes on the unmasked portion of the board. Allow the project to dry completely before carefully removing the tape.
- Fasten the handles of your choice.
- Add a custom message or design with chalk and use to serve.

**NOTE:** Do not place food directly on the chalkboard surface. We use small, decorative dishes or wax paper for food safety. **OH**



**Smitty's**  
FINE  
FURNITURE



For the LOVE of  
**CANADIAN**  
FURNITURE

**HANOVER SHOWROOM** 170-3<sup>rd</sup> Street 519-364-3800 **KITCHENER SHOWROOM** 170 Gateway Park Drive 519-658-9313

[smittysfinefurniture.com](http://smittysfinefurniture.com)



# *Topnotch* furniture

manufacturers of fine furniture

**Handcrafted, Solid Wood,  
Reclaimed & Fine Furniture**

*18 Years*  
of Professional Design  
& Manufacturing



#89446 Fordwich Line  
1 km North of Hwy 87, Gorrie, ON



**519.335.3213**

**topnotchfurniture.com**