

FALL 2019

STYLE ■ COMFORT ■ IDEAS ■ REAL ESTATE

ourhomes

G R E Y & B R U C E C O U N T I E S

CLASSIC LAKEHOUSE

GARAGE
MAKEOVERS

BUILT
TO LAST
IN GORRIE

HILLTOP
TIMBER
retreat

ourhomes.ca/greybruce

DESIGNED
DINING

HOMEMADE
APPLE CIDER



FROM NATURALIZED LANDSCAPES TO CUTTING EDGE DOCKS

You love this area for its rugged landscape and breathtaking shoreline. We love it too.

That's why we create outdoor landscapes in harmony with our area's unique environment - connecting you back to natural wonder. Our spaces bring renewal... a place to reconnect with people and places that matter most to you. So you can rest, recharge and re-connect.

OUR ROOTS RUN DEEP.

Our products can be found on homes and businesses throughout the Grey/Bruce region. Our roots are here and we are proud to have provided you with quality products and service for over 70 years. Please visit us or our website and experience how we can bring your inspiration to life.

www.shouldice.ca



The natural choice in stone

BECAUSE *natural beauty* ENRICHES LIVES.

HUTTEN.CA



Personalized to Perfection

EXCLUSIVELY AT DI PIETRA DESIGN



PHOTO CREDIT: TEN & CO.



DI PIETRA DESIGN
COUNTER TOPS



Choose From Our Best Selling Line Of Quartz
Our Quartz Tops Are On Average 30% Less Than The Leading Competitor!

705.727.0096 | 672 Welham Rd - Barrie | www.dpd360.com



Professional Building Solutions



Whether it's renovations, additions, custom homes and cottages, outdoor living spaces, eco minded building projects or modern design, AND-ROD Construction can evolve your ideas into the property of your dreams.

Tobermory, Ontario
519-596-1224
anchor@and-rodcontracting.com
and-rodcontracting.com



**You dream it,
we design it.**

TruLine
DESIGN | DRAFTING | PROJECT MANAGEMENT
Over 40 years experience.

**CUSTOM
HOME
DESIGN**

226.841.0138 info@trulinedesign.com

trulinedesign.com



REPELS THE TOUGHEST STAINS.

Find expert service and every colour you can imagine at your locally owned Benjamin Moore® retailer.

HANOVER Cuneo's Carpet One Floor & Home

873 10th St | 519.364.1303 | cuneointeriorscarpetonehanover.com

SOUTHAMPTON Martin's Home Hardware

236 High St | 519.797.3645 | martins.ca

WALKERTON Cuneo Interiors

207 Durham Rd E | 519.881.2170 | cuneointeriorscarpetonehanover.com



Benjamin Moore®

©2019 Benjamin Moore & Co., Limited. Benjamin Moore, Regal, and the triangle "M" symbol are registered trademarks of Benjamin Moore & Co., Limited. 4/19



Patriot Love
NPC44-3

Patriot Love is just one of Beauti-Tone's exclusive colours from the **National Parks of Canada Colour Collection**.
Discover the 47 natural hues offering stunning magnificence of our Canadian parks to your home.



Beauti-Tone
CANADA'S COLOUR EXPERTS

Available exclusively at Home Hardware and Building Centre locations.
Actual paint colour may not be as shown. beauti-tone.ca



Have us install a fireplace in your home.

The Fyre Place & Patio Shop *Since 1973*

Located at Highway 6 & 21, Springmount (Near Owen Sound)
519.371.2963 | www.thefyreplace.com

NAPOLÉON



KitchenAid
HOME APPLIANCES

SQUARE DEAL NEIL'S
TV & APPLIANCES

For over 60 years!

SALES & SERVICE • NEW & USED

Hwy 21, Southampton 519-797-3905

www.squaredealneils.ca

Large enough to serve you, small enough to care!



Relax in COMFORT

radiant heating
furnaces
fireplaces
ductless systems
heat pumps

AIRTECH
MECHANICAL

HEATING • AIR CONDITIONING • VENTILATION SYSTEMS
519-934-3358
117064 Grey Rd.3, Keady www.air-tech.ca



The Candue Difference
Integrity | Diligence | Results

CANDUE HOMES

- NEW: Durham Subdivision, Single, Semis and Townhouses. Book now to reserve a lot for your spring start!
- Forest Creek Estates Spec house for purchase along with 8 lots to build your dream home!
- 2 lots available MacDonald Crescent, Durham, Ontario.
- Spec houses for purchase in Walkerton & Hanover, Ontario.
- Only 3 lots left in Hanover subdivision! Call to book your new build today!

519-369-5051 homes@canduehomes.com www.canduehomes.com



**& quality workmanship
customer satisfaction**



The OLD BARN
POLISHED STONE CREATIONS

Your local source for Granite, Marble & Quartz Countertops

173480 Mulock Road (between Durham & Hanover) 519.369.1710 theoldbarngranite.ca

15 years Celebrating of business excellence!

THE FIBRE ADVANTAGE

Powered by:

Bruce Telecom
Connecting our Community

Lightning-Fast Internet
download speeds up to 1 Gbps

Secure dedicated bandwidth

Reliable service for all your connected devices

(519) 368-2000 • 1-866-517-2000

bruce telecom.com   
INTERNET • DIGITAL TV • HOME PHONE • MOBILE

Premier Industrial Painting



Media Blasting | Staining | Chinking | Sealing
Painting | Insect Control

Call us today for a free estimate!
Office: 519.506.3735 | Cell: 226.668.5918
premier@wightman.ca
premierindustrialpainting.ca

STYLE • COMFORT • IDEAS • REAL ESTATE
ourhomes
GREY & BRUCE COUNTIES

REGIONAL PUBLISHERS Jamie Jefferson
Georgette McCulloch
REGIONAL MANAGING EDITOR Sara Martin
REGIONAL PRODUCTION MANAGER Kelly Donaldson
MARKETING & ADVERTISING Betty Ann Fawcett, 519.372.6338
bettyann.fawcett@ourhomes.ca
DISTRIBUTION Allan Fawcett, 519.986.2599

REACH US EASILY: firstname.lastname@ourhomes.ca

OUR HOMES is a registered trademark of OUR HOMES MEDIA GROUP INC.
OUR HOMES Grey & Bruce Counties is published four times a year.

OUR HOMES is distributed to residents of Grey & Bruce Counties and to cottagers via direct mail. Copies of OUR HOMES are available for free pick up at high traffic locations throughout the region. Copies of OUR HOMES are also sent via direct mail to members of select ski clubs in the region. OUR HOMES is distributed throughout select B&Bs and hotels, and to select business leaders via direct mail.

OUR HOMES Media Group Inc. is a proud member of the
Owen Sound and District Chamber of Commerce.

Please send all letters and/or feedback to OUR HOMES Magazine, 25 Elgin St.,
Collingwood, Ontario, Canada L9Y 3L6. Or email us at editor@ourhomes.ca.
All letters received are subject to editing for grammar and length.

OUR HOMES MEDIA GROUP INC:

EDITORIAL	PRODUCTION
EDITOR-IN-CHIEF Georgette McCulloch	PRODUCTION DIRECTOR Lynn Derrick
ASSOCIATE EDITOR Kristin Schnelten	PRODUCTION MANAGERS Julia Dempsey, Kelly Donaldson, Marilyn Reid, Tracy Shuttleworth
DIGITAL EDITOR Rachael Havens	OPERATIONS
MANAGING EDITORS Nancy Belgue, Walter Franczyk, Mary Hatt, Cheryl Long, Gina Makkar, Sara Martin, Tiffany Mayer, Georgette McCulloch, Melissa North, Merrilyn Patterson, Heather Wright	MANAGING DIRECTOR, SALES & MARKETING Jamie Jefferson jamie.jefferson@ourhomes.ca
ART	MANAGING DIRECTOR, OPERATIONS Georgette McCulloch
ART DIRECTOR Tara Chattell	ACCOUNT EXECUTIVE Lisa Ormsby
ASSOCIATE ART DIRECTORS Sheila Britton, Robynne Sangiuliano	REGIONAL ACCOUNT EXECUTIVE Suzanne Strong
DIRECTOR OF PHOTOGRAPHY Jason Hartog	BUSINESS DEVELOPMENT Kelly Craig
	ACCOUNTING Tyler Annette
	ACCOUNTS RECEIVABLE Cindie Tonon

CONTRIBUTORS

Sheila Britton, Stephani Buchman, Tara Chattell, Walter Franczyk, Rebecca Hay,
Gillian Jackson, Connie Jeske Crane, Aleem Kassam, Phyllis Lui, Sandy MacKay,
Sara Martin, Dawn McConnell, Georgette McCulloch, Jenelle McCulloch,
Tamarisk McNalty Stephens, Jennifer Patton, Dolores Pian, Provoke Studios,
Melanie Rekola, Kristin Schnelten, Sarah Tacoma

Advertisements and the content, including photos, of advertisements published within
OUR HOMES magazine are supplied solely by the advertiser and neither the publisher nor
OUR HOMES Media Group Inc. accept responsibility for opinions expressed in advertisements or for
copyright issues with regards to photos, advertising copy and advertisements, nor shall they be held
liable thereby. By act of reading this publication, all advertisers and readers agree to indemnify and
hold harmless both OUR HOMES Media Group Inc., and the publisher thereby. Copyright ©2019
OUR HOMES Media Group Inc. All rights reserved. Reproduction without permission is prohibited.

OUR HOMES CAN BE FOUND IN THE FOLLOWING MARKETS:

- Barrie/Orillia/Midland • Grey Bruce • Hamilton • London • Muskoka
- Niagara • Oakville/Burlington/Mississauga • Ottawa • Peterborough
- Southern Georgian Bay • Toronto & York Region • Region of Waterloo
- Wellington County/Orangeville/Caledon • Windsor



CHESTNUT PARK
REAL ESTATE LIMITED, BROKERAGE

CHRISTIE'S
INTERNATIONAL REAL ESTATE

OPENING DOORS ACROSS ONTARIO

CHESTNUT PARK REAL ESTATE LIMITED, BROKERAGE

OWEN SOUND
519.371.5455

WIARTON
519.534.5757

BARRIE/COLLINGWOOD
705.445.5454

TORONTO | 416.925.9191
FOREST HILL | 647.347.8500

BARRIE | 705.445.5454

PRINCE EDWARD COUNTY
613.471.1708

HALIBURTON | 705.754.0880

PETERBOROUGH / THE KAWARTHAS
705.652.5000

MUSKOKA / PORT CARLING
705.765.6878

MUSKOKA / FOOT'S BAY | 705.375.9191

LAKE OF BAYS / HUNTSVILLE / ALMAGUIN
705.789.1001

GRAVENHURST | 705.765.6878

ERIN / CALEDON / MONO
519.833.0888

LAKE SIMCOE / NORTH OF MARKHAM
89.338.0767

STRATFORD / HURON-PERTH
289.338.0767

NORTHUMBERLAND COUNTY
905.800.0321

KITCHENER / WATERLOO*
519.804.7200 *Affiliate Office

WALKERTON & DISTRICT OPTIMIST CLUB

Holiday

HOUSE TOUR

FRI 5 to 9 PM

TICKETS \$20

SAT 1 to 4 PM

SELF-GUIDED TOUR

SIX FESTIVE HOMES

NOVEMBER

FRI 22 and 23 SAT






SNOW OR SHINE!

TICKETS

(available Nov. 1st)

can be purchased at the following Walkerton businesses

Marlin Travel

Holst Office Supply

Pellow Pharmasave

Browns Pharmacy

and in Hanover

Marlin Travel

Holst Office Supply

PROCEEDS SUPPORTING THE WALKERTON OPTIMIST ACCESSIBLE PARK

editor's note



I HAVE A SMALL SHED

I've been thinking about making into my office. It has a sub-floor but no heat or insulation so it's a blank canvas for a space to inspire and organize my work life. The

room in my home that I currently use for my office would work much better as a bedroom.

I realized this shortly after I moved in. I have lots of visitors and not enough beds. It's been fun to re-imagine both spaces to better suit how I live and entertain in my home.

In today's real estate market, sometimes having a good look at your current home and using what exists opens the door to possibilities. I hope our feature about repurposing the garage offers a ton of ideas to create a space that suits your family.

Two other home stories are new builds that embrace time spent with those near and dear. Each home has bedrooms for sleepovers, showing the thought and planning that went into creating a home that functions for the homeowners and their guests.

Many of our Style Picks have family in mind, and as we move into the time of the year for gatherings, you may discover a product to help your family enjoy all that together time just a little more. With everyone together, wouldn't it be fun to make a big batch of Apple Cider (page 24). Everyone can take some home to remind them of time spent with family and friends.

Enjoy autumn in Grey Bruce.

Sara Martin

Sara Martin, Managing Editor
sara.martin@ourhomes.ca

Follow us   
Subscriptions subscribe@ourhomes.ca

online Get more at ourhomes.ca



TNT
Dry Ice
Services

519-378-3590
info@tntdryice.com

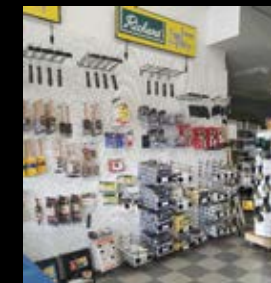


What is Dry Ice Blasting?

DRY ICE BLASTING uses soft dry ice, accelerated at supersonic speeds, and creates mini-explosions on the surface to lift the undesirable item off the underlying substrate, instead of using hard abrasive media to grind on a surface and ultimately damaging it. DRY ICE BLASTING is a food grade cleaning system and leaves no blast media residue. DRY ICE BLASTING is efficient, cost-effective and environmentally friendly.



NEW STORE LOCATION!



Custom interior/exterior
paint and stain colour

Colour samples
& brush outs

Colour matching

Log home chinking
& supplies



**Wood & Log Home
Maintenance & Repairs**

Free Estimates



Preparation includes:
- hot and cold pressure washing
- all types of media blasting for
interior/exterior finishing

Deck refinishing
Brick cleaning and sealing

Removing efflorescence
from brick and masonry

Graffiti removal

841
10th Street West
Owen Sound

Call for Free Estimates
519-372-1221

Contracting locations in
Owen Sound and Durham.

Online store

paintwoodcare.com

ecostore@customsoda.ca

Free delivery on orders of \$200 or more.
Shipping within Canada only.



CONTENTS

FALL 2019



84

24



34

ON THE COVER

A bright, carefully curated cottage on Lake Huron. Story, page 34. Photography by Sandy MacKay.



54



20

LOCAL FEATURES

- 20 Style Picks** Inside and out, get ready for fall with our seasonal selections.
- 34 Home & Builder** Carefully considered details fill this Lake Huron cottage.
- 54 Spotlight** Every item at Topnotch Furniture is built to last.
- 60 Home & Builder** Use your garage for living space, not the car.
- 72 People** Creating peace of mind is a priority at these businesses.
- 84 Home & Builder** The Great Lakes Frame Company delivers a timber beauty.

DEPARTMENTS

- 14 Editor's Note**
- 18 Advice** Wine Cellars
- 24 Good Taste** Juicy Apple Cider
- 26 Gardening** Blooming Hydrangeas
- 30 Double Take** Rich Luxe Blue
- 32 Projects** Bath Caddy
- 46 Design Ideas** Lighting Trends
- 50 Decorating** Hot Vintage Finds
- 52 Real Estate** Secure Your Home
- 58 Crafty Ideas** Handy Message Centre
- 100 Design Ideas** Interior Woods
- 104 Home Resource Directory**
- 106 Entertaining** Dine In Style
- 110 Finishing Touch** Copper Accents

Peace of mind is a beautiful thing

Cambria® offers superior craftsmanship, exquisite beauty, and legendary durability for life. All backed by a Full Lifetime Warranty. Discover your new Cambria kitchen or bath at Elegant-Solutions.ca



CLAIRIDGE™



C A M B R I A
SLAB GALLERY

By Appointment Only

*elegant*solutions
Custom Cambria Quartz Surfaces

12 Sarjeant Drive, Barrie | 705-797-0114 | Elegant-Solutions.ca

CLAIM YOUR LISTING NOW!

THE LIST

ourhomes

Ontario's Most Comprehensive
Homes-Related Online Directory

If you or your business offers services or products for homes in Ontario, customers will find you on **THE LIST** by OUR HOMES.

Regional OUR HOMES magazines saturate 14 local markets in Ontario, connecting our advertisers to over 5,000,000* readers annually.

*Source – Google Analytics/Salt Strategy 2016 Readership Survey

Amplify your company's market opportunities with our expanding reach!



- ✓ Claim your business listing and expand your online presence
 - ✓ Generate leads from THE LIST's Lead Forms
 - ✓ Geo targeting
- ✓ Improve brand awareness and increase local visibility
 - ✓ Enhance your profile with product/service descriptions, pictures and testimonials
 - ✓ Strengthen your business's reputation
- ✓ Boost your SEO ✓ Increase traffic to your website

thelist.ourhomes.ca

advice



WINE CELLARS

Interior Designer **Dolores Pian** shares her ideas.

WINE CELLARS AND WINE-TASTING ROOMS ARE COMING OF AGE.

Wine collecting requires a special space of its own and more homeowners are installing wine rooms in new and existing homes to ensure the right bottle is on hand. With today's technology, refrigeration and modern materials, wine can be stored in almost any location. However, this 6,100-year-old beverage still requires tender loving care.

WINE IS FUSSY

Wine breathes through the cork and ages in the process. Too much oxygen makes the wine bitter. The pace of this breathing is faster at higher temperatures and slower at lower temperatures. Fluctuations in temperature and humidity accelerate the aging process.

WINE STORAGE

Wine requires a cool, dark space with higher humidity than the average living space. Wine does not like noise or vibrations from any source.

It doesn't like any temperature extremes; 45°F to 65°F are the best temperatures for serving wine and 55°F is the ideal storing temperature for long-term storage, regardless of your wine style. Wine storage rooms come in two types: passive and active.

Passive Wine Cellars such as caves, basements and closets are naturally cooler and only receive indirect sunlight. They minimize swings in temperature and damage to the wine.

Active (Cooled) Wine Cellars are fully climate-controlled and can be set to the perfect storage temperature and humidity level to ensure ideal conditions. They are more flexible and can fit into any large, small or odd space in your home.



MODERN DESIGN TRENDS

Glass enclosures allow you to show off your wine collection and can be built as tall or wide as you want. The choice of tempered glass used is extremely important. The insulation value should maximize the refrigeration, humidification benefits and UV protection required for wine rooms that are in direct contact with sunlight. Etched or frosted glass are decorative options.

Integrating wine cellar design into your space for that

WOW factor. Placing wine storage in living areas, man caves or kitchens allows you and your guests to engage with the wine while you show off your collection.

A label-forward design draws attention to the label art. It creates an intimate, interactive experience between the user and the bottle of wine.

Metal and acrylic wine racking. These materials are gaining popularity in contemporary wine cellar design. They provide the same storage quality as wood and can be much more cost effective.

Bridging old and new. Combining wood with metal or acrylic allows for more flexibility in a project design that is less stuffy and ornate, more contemporary and inviting.

MODERN DESIGN AND CONSTRUCTION CONSIDERATIONS

- ▶ Use LED lights and UV film for glass enclosures.
- ▶ No vibrating wall speakers and no noisy air conditioners. Insulate your mechanical air ducts or use a ductless air conditioner.
- ▶ Vent equipment heat outside.
- ▶ Storing multiple bottles of wine requires plywood backing for wall installation.
- ▶ Proper wall insulation, a vapour barrier and moisture-resistant green board walls are essential.
- ▶ Easy access to electricity.
- ▶ Moisture-resistant flooring is a must. Consider the insulation value of the floor and materials.



RETURN ON YOUR INVESTMENT (ROI)

A wine cellar is a high-end investment and, in some homes, it is a must-have upgrade. With an average bottle price of \$95, it pays to design your investment so it can add value to your home.

Galileo tells us: "Wine is sunlight, held together by water." Then sunlight and water hold together the truth in wine. Take good care of your truth. **OH**

It's time for solar.



Take control of your electricity bill.

Solar will insulate you from electricity rate increases for 30-40 years! And yes, the less power you buy, the lower your delivery fees are.

Contact Blackline Power to evaluate your solar options. We are the local experts and have installed hundreds of solar systems since 2010. Invest in the sun and reduce your carbon footprint at your home, cottage, farm or business!

ROOF & GROUND GRID-CONNECTED SYSTEMS
RESIDENTIAL & COMMERCIAL & AGRICULTURAL
HIGHLY TRAINED & SOLAR CERTIFIED & INSURED

BlacklinePower
RENEWABLE ENERGY SPECIALISTS
519.371.8945
www.blacklinepower.com





COOL ideas

Company's coming! Get your home ready for the holiday season.

PHOTOGRAPHY SARAH TACOMA



1

SERENDIPITY CANDLE COMPANY

Candles
Made with 100 per cent soy wax and offered in over 100 scents, including many that will evoke memories of Grey Bruce. You can find these candles at many shops in the area or visit the factory in Collingwood.

20 Balsam St., Unit 14, Collingwood
705.443.8621 | serendipitycandlefactory.com

2

COUNTRY CHARM MENNONITE FURNITURE

Sideboard
Inspired by old-world design and made from solid wood with iron accents and drawer pulls, the Moorhouse Coventry sideboard is easily customizable to include more drawers or cupboard space. The possibilities are endless!

317680 Hwy 6&10, Rockford
519.376.4434 | ccharm.com

3

HOUSE RULES DESIGN SHOP

Pendant Light
The open-cage style of the Abbotswell linear chandelier makes maximum impact with minimal lines. Let the designers at House Rules help you pick from one of three finishes that will best suit your home and light the feast on your dining table.

341152 Grey Rd. 28, Hanover
226.434.1234 | houserulesdesign.com

4

GREY BRUCE PAINT & DÉCOR

Paint
Make the exterior of your home pop with any one of the new exterior collections from Benjamin Moore. These colour combinations are fresh and inspiring and not just for the front door but the siding and trim as well. Let the experienced staff help you choose the best palette to suit your home.

1580 20th St. E., Owen Sound
519.371.4207 | greybrucepaint.com

5

THE RUSTY STAR

Table
Get ready for some great dinner parties with everyone gathered around this stylish dining table. It can be ordered in a variety of woods, stains and textures. The sturdy tripod metal base adds an interesting design detail and makes room for long legs.

408065 Grey Rd. 4, Maxwell
519.922.2010 | therustystar.ca

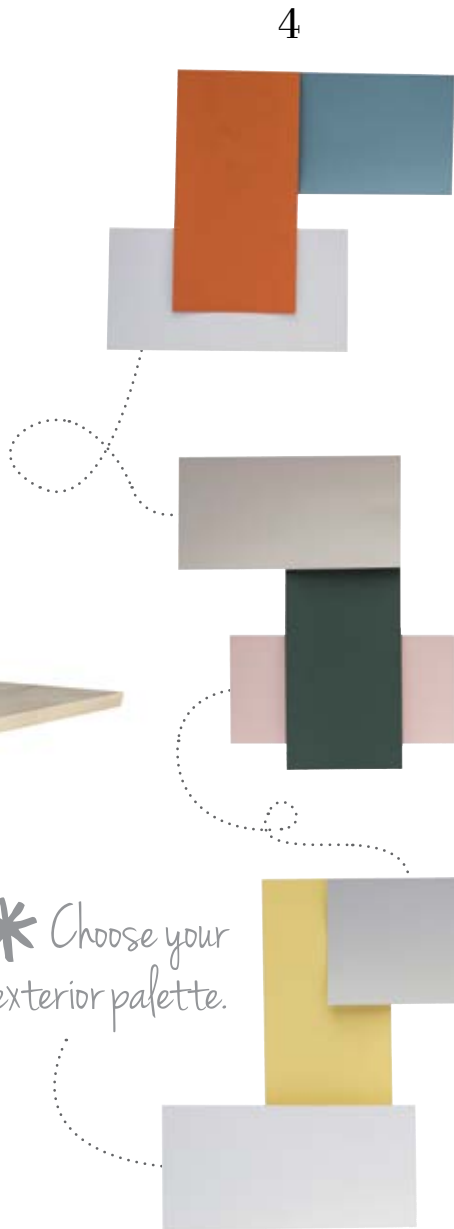
6

SMITTY'S FINE FURNITURE

Sofa
This sofa from Decor-Rest Furniture is just one of many sofas waiting for a rainy night spent curled up reading a great mystery with a hot cup of tea. If anyone in the family wants to do the same thing, there's more than enough room.

170 3rd St., Hanover
519.364.3800 | smittysfurniture.com

Continued on page 22



style picks



7



8



9

7 MILLER HOME HARDWARE BUILDING CENTRE

Throws
As the weather turns cooler, stop in to browse the home décor section and grab a throw or two. A selection of baskets will give them somewhere to wait when not in use.

900 Main St., Sauble Beach
519.422.2424 | homehardware.ca

8 STOLTZ SALES & SERVICE

Makita Leafblower
Makita's lithium ion battery platform powers all of its cordless outdoor power equipment and cordless power tools. This 36-volt blower is quiet and has the power to get the job done without the emissions. Get that yard cleaned up!

1405 Highway 9, Mildmay
519.367.2672 | stoltzsales.com

9 PORT ELGIN HOME HARDWARE BUILDING CENTRE

Grill
With three tiers of stainless steel grates, grilling for a crowd is a breeze with the Traeger Timberline 1300 Pellet Grill. The wood pellet fuel is 100 per cent natural and available in hickory, apple, oak and pecan to name a few. Mix and match the pellets to create your signature smoke.

924 Goderich St., Port Elgin
519.832.2466 | homehardware.ca OH

BLACKLAND CONSTRUCTION LTD.

Homes, renovations and custom constructions in Grey and Bruce County.



GREY BRUCE HOME BUILDERS & TRADES ASSOCIATION

519.220.5723

info@blacklandconstructionltd.com



Warm up your décor.

BUDGET BLINDS

Style and service for every budget.*

We bring custom window coverings to you!

shutters | draperies | wood blinds | cellular shades
woven woods | roman shades | window film...and more

Expert fit!

Measuring & Installation Free In-Home Consultation
519-793-3921 www.budgetblinds.com

...just what you need.



Home Decor & More

20 Balsam St., Collingwood - 519.447.0053

1000 10th St. W., Owen Sound - 519.447.0052

29 Young St., Alliston - 416.936.2263



Visit us often!

Inventory & selection changes frequently.



Meg's DRYWALL

Meghan Lipka

megsdrywall@gmail.com

519-270-6378



good taste

Homemade APPLE CIDER

RECIPE AND PHOTOGRAPHY
JENELLE MCCULLOCH

A classic fall favourite. This homemade apple cider is the ideal way to use some of those freshly picked apples.

INGREDIENTS

10-12 apples, cored and quartered
2 oranges, peeled and quartered
Cinnamon stick
4 whole cloves
8-10 cups water

DIRECTIONS

Place apples, oranges and spices into a stock pot. Add water until the fruit is covered.

Simmer over low heat for 2 hours.

Mash fruit and simmer for another hour.

Strain through a fine mesh strainer or cheesecloth.

Reheat to serve. **OH**

online

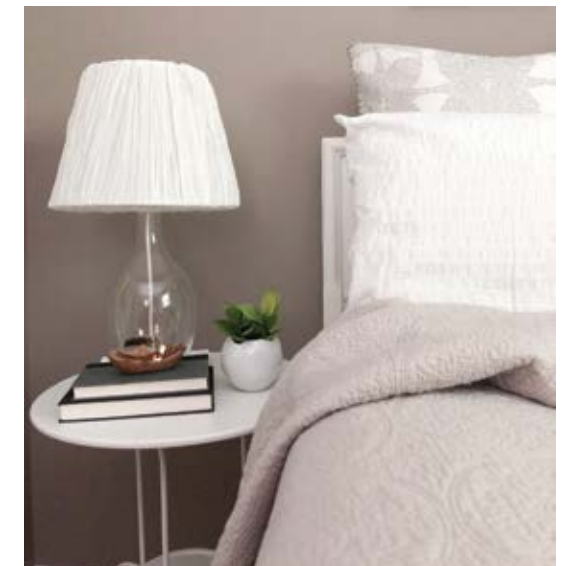
Get more recipes at
ourhomes.ca/mag/cook



Located at Grey Rd. 4 Maxwell, Ontario

www.therustystar.ca | (519)-922-2010 | therustystar@live.com

Hours: Mon-Fri: 9:00 am - 5:30 pm
Sat: 9:00 am - 5:00 pm (Closed Sundays)



INTERIOR DESIGN & DECORATING | SPACE PLANNING
KITCHEN & BATH DESIGN | FURNITURE & FIXTURE PLANS

p: 519-270-2167 e: kate@hometowndesign.co
www.hometowndesign.co



Erin McConnell Kenny, CAIB
Registered Insurance Broker
emcconnell@cmrinsurance.com
519-889-2889

Rebecca Matches, CAIB
Registered Insurance Broker, Individual & Group Life Advisor
rmatches@cmrinsurance.com
519-477-1473

www.cmrinsurance.com



**Home comfort
you can
depend on.**

You can count on Heil® heating and cooling systems for quiet, energy-efficient and reliable performance, backed by outstanding warranties.

Sandy Hamilton
PLUMBING & HEATING INC.

NORTHERN
HEATING & VENTILATION

AIR STAR
MECHANICAL

HEIL
HEATING & COOLING PRODUCTS
Depend On Us.

PLUMBING, HEATING, A/C, GEOTHERMAL & WATER TREATMENT
Collingwood • Markdale • Owen Sound • Durham
519-371-5815 • 519-986-3307 • 800-661-5796 • 519-369-1011
northern@sandyhamilton.ca

HYDRANGEA *Love*

STORY **MELANIE REKOLA**

*I'VE BEEN HAVING A NOT-SO-SECRET
LOVE AFFAIR WITH HYDRANGEAS FOR
MORE THAN 20 YEARS.*

These beautiful, classic shrubs look great in traditional gardens, mixed gardens and modern gardens. There are so many luscious varieties, but over time (and through trial and error) my tastes have changed. Here is my tried and true list, including straight talk on all the popular varieties and the toughest, best of the best!

The name hydrangea stems from the Greek word for water, hydros and jar, angos, and more than hints at the constant moisture required to keep these plants happy, healthy and blooming. Their long-lasting blooms are not actually flowers, they are actually flower bracts, which explain their very long flowering cycle.

PANICLE TYPE (*HYDRANGEA PANICULATA*)

These are the hearty types with strong woody stems and panicle-shaped flowers that bloom reliably from mid- to late-summer, well into fall. They don't require as much watering as the fancier types and don't require staking. They bloom on new growth each year, so no need to worry about a hard winter destroying tender buds. In colder climates like ours, these beauties take full sun but enjoy protection from the strong afternoon heat. They typically grow between three to eight feet but can be pruned to maintain height. Their leaves are dark green, oval-shaped and turn shades of red/brown in autumn.

VANILLA STRAWBERRY

The fragrant Vanilla Strawberry hydrangea takes a few years to really get growing but when it does – oh my – patience will be rewarded with huge, fluffy and creamy white blooms slowly fading to pink and white bi-coloured flower heads.

Continued on page 28



Autumn!



Garden Centre &

Complete Landscaping Services



Peninsula Out Of Doors

14 Budvet Rd, Lions Head | 519.793.3979

penoutofdoors.com

gardening

QUICK FIRE
(AND LITTLE QUICK FIRE)

Quick Fire hydrangea (as the name suggests) blooms earlier than all the others. The flowers open white and quickly turn to dark pink. Little Quick Fire is exactly the same except it grows only about four feet in height – great for small spaces.



BOBO

Bobo hydrangea is a dwarf panicle that is exceptionally floriferous. White blossoms turning to blush pink smother this small-statured three-foot shrub.

LIMELIGHT AND LITTLE LIME

Yet another wonderful panicle type, Limelight hydrangea sports cool lime-green blooms. Little Lime hydrangea does too, in a smaller size.



SMOOTH TYPE
(HYDRANGEA ARBORESCENS)

Sometimes called wild hydrangeas, these have gorgeous, round snowball blooms that last for weeks in mid/late summer. They are much more shade tolerant than the panicle types but bloom best with some morning sun. They flower on new wood and can be pruned to the ground or near ground level in late winter/early spring to encourage abundant blossoms. The leaves of arborescens are large, dark green, heart-shaped, and thin.



ANNABELLE

Annabelle hydrangea is a well-loved classic hydrangea with tremendous staying power. It has large, pure white snowball blooms but they do tend to flop after a heavy rain. Peony rings work to keep them upright and are quickly hidden by their large leaves or you can prop them up with strategically placed dead branches.



INCREDIBALL

Incrediball hydrangea is exactly like Annabelle but with even more gargantuan white blossoms the size of basketballs!



CLIMBING
HYDRANGEA
(HYDRANGEA PETIOLARIS)

As the name advises, these hydrangeas are actually vines. Gorgeous white and fragrant lacecap flowers cover this sturdy vine in June/July. Mid-green leaves turn yellowish in fall with pretty peeling bark. This is a slow grower that enjoys a shady spot but can grow 50 feet, so plant wisely.

BIGLEAF TYPE
(H. MACROPHYLLA)

These include both lace-caps and mophead types and are sometimes called French hydrangeas. They have big, glossy leaves and have gorgeous pink, blue, purple or white blossoms and are the fancy kind coveted by many. I hate to be cynical and the bearer of bad news, but in our Ontario climate, this type of hydrangea will often produce lots of leaves, but blossoms can sometimes be a scarcity. Most varieties bloom on old wood, making the flower buds susceptible to killing winter temps, though there are some that flower on both old and new wood. Read below.

ENDLESS SUMMER

Endless Summer hydrangea and its offspring (The Endless Summer collection) bloom on old and new wood, making them the most reliable of the bigleaf type for our climate. The blooms of the whole series are beautiful! Just be prepared; they are high-maintenance and if you want to keep them blooming, you need to water them often and just the right amount. They need to be kept moist, but not have wet feet. Best of luck! OH



Complete design & build landscape construction.

landscapeontario.com
Green for Life!

double take

BRILLIANT BLUE

RECREATE THIS LOOK
IN YOUR OWN HOME.

PHOTO: GILLIAN JACKSON | DESIGNER: JANE LOCKHART



1. SURYA: Wall Décor WST-4000
2. UTTERMOST: Vescovato Table Lamp
3. PIER 1: Small Silver Pedestal Hurricane Candle Holder 4. YUMMI CANDLES: 3" x 4" Pillar Candle in Navy Blue 5. MAXIM LIGHTING: Comet 21-Light Pendant 6. BOUCLAIR: Metallic Decorative Ball And Glass Table Vase 7. IKEA: Pepparkorn Vase in Blue 8. ELK HOME: Set of Two Mirrored Trays 9. CB2: Smart Round Marble Top Coffee Table 10. RENWIL: Plaza Mirror 11. JAIPUR LIVING: Yasmin Rug in Pelican 12. KINCAID FURNITURE: Ann Arbor Chair 13. IMAX WORLDWIDE HOME: Matilda Large Glass Vase 14. BARRYMORE: 2704 Newman Sofa - 4194 Uniform with Nail Head Trim 15. BARCLAY BUTERA: Para Aqua Knife Edge Throw Pillow 16. SURYA: Essien Throw Pillow in Lime 17. CRATE & BARREL: Arden Mirrored Stainless Steel Taper Candle Holders OH



TRAEEGER
WOOD FIRED GRILLS

TASTE THE
WOOD-FIRED
DIFFERENCE®



PORT ELGIN
Home
hardware
building centre

Traegers turn hardwood fuel into wood-fired creations and ordinary meals into extraordinary opportunities to gather.

Your world deserves more flavour.

924 Goderich Street, Port Elgin 519-832-2466



LONG SOAKS IN THE TUB ARE A LUXURY MADE EVEN BETTER WITH A TRAY TO KEEP EVERYTHING YOU NEED WITHIN REACH. HERE'S A SIMPLE DO-IT-YOURSELF TRAY FOR BATH TIME.

Diy

BATHTUB TRAY

PROJECT DAWN MCCONNELL | PHOTOGRAPHY TARA CHATTELL



MATERIALS

Plank of wood six inches wide and approximately four-feet long

Tape measure

Pencil

Sandpaper, fine

Wood glue

Screws

Drill and bits

Saw (or have your lumber yard cut)

2 handles with screws

Paint or stain

Paintbrush

Varathane or sealer

HOW-TO

Measure width of tub interior and exterior.

Cut wood to exterior measure plus three inches.

Cut two 1 1/2-inch pieces of wood from the end of board. These will become braces for underside of tray.

Sand wooden pieces and paint or stain.

Attach braces to bottom of tray to fit interior tub measurement.

Drill holes and attach handles close to each end of the tray.

Paint a message.

Coat with sealer. OH



Wood braces keep the tray from sliding off the tub edge.



Western Ontario Whirlpools

• WHIRLPOOL REPAIRS •

jets, piping, push buttons & electronics

• WHIRLPOOL PUMP REPAIR •

replace pumps & air blowers

• SHOWER DOOR ADJUSTMENTS & REPAIR •

• ACRYLIC REPAIR SPECIALISTS •

chips, cracks, gouges, scratches to tubs & showers



Durham, Ontario | wowbjlang@gmail.com

226.432.2108



Inside Ideas

829 2nd Avenue East, Owen Sound 519.371.6926

BLINDS | UPHOLSTERY | BEDDING



STAIRWORKS

MANUFACTURERS OF INTERIOR WOODEN STAIRS & RAILINGS



Bespoke Stairs, Railings, & Wood Specialties

• Excellence in Quality & Service

• Award Winning Unique Designs

• Onsite Estimates

"Aiding the World in their Ups and Downs"

519.823.1921

295 Southgate Dr. Unit #8, Guelph, Ontario

www.stairworks.ca



Hot Tubs

FROM \$2,999⁹⁹

The Water Store

OWEN SOUND • 519-371-8500

thewaterstoreowensound.com

The front door opens and you see the view to the lake through the windows in the bright and welcoming great room.

STORY JENNIFER PATTON
PHOTOGRAPHY SANDY MACKAY

TRADING SPACES

Transom windows in the kitchen accentuate the soaring ceilings. Caesarstone's Cloudburst Concrete tops the island and Caesarstone Rugged Concrete is used on the perimeter counters.

"I THINK IT'S THE LITTLE THINGS, THE DETAILS."
— Jane Kershaw



LEFT: A built-in cabinet serves as a landing zone for keys and mail beside the front door. The red fish on the wall is a reminder of time spent in Muskoka. **RIGHT:** Pocket doors are strategically located throughout the home. In the laundry room, a pocket door was used to create a barrier-free area in the rear hall that lets the encaustic tile flow uninterrupted. **BELOW:** The butler's pantry is a compact room just steps from the main kitchen. Beadboard, hung vertically, is used on the walls. The sink is a practical addition in this space.



W

hen Allan Dew and Jane Kershaw built their first cottage in Muskoka, they imagined it would be a forever nexus for their large family. With three kids and seven grandchildren, the cedar cottage with its bunkhouse and secret passageways was a beloved escape from the city. But after 23 years, with their two daughters all grown and living in Grey and Bruce Counties, "It was time," Allan says, "for chapter two."

After the sale of the Muskoka cottage, Allan and Jane decided they weren't going to make a move on a new summer place for at least a year. That plan failed when they found a lot in Port Elgin on Lake Huron. They sat on Muskoka chairs by the water and quickly decided it was time to build. *Continued on page 39*





This laser-cut panel by Sam Davatgar of Artotech lets the sunlight fill the hall to the main-floor guestroom.



TOP: This seating area by the kitchen is a comfortable lounge area for guests to have a drink as their hosts prepare dinner. The oil painting is by Doug Kirton. **ABOVE:** Steve Dennison of Dennison Homes, Kaitlyn Shular of Bruce County Custom Cabinets and Amanda Thede of K-Interiors worked together to help create this beautiful home. The front door is painted Benjamin Moore's Van Courtland Blue. **RIGHT:** The shades of the pendent lights above the island offer a clear view of the items displayed on the open kitchen shelving.



ABOVE: The fireplace surround in Benjamin Moore's Black Onyx extends to frame the television. The painting over the mantel is by Doug Kirton. **RIGHT:** The sheepskin-covered ottoman is for the family cat, Ned, who keeps Jane and Allan company as they watch the sun set over Lake Huron.

They turned to their friend, Grant Williamson of Elmo Star Design who built their Muskoka home, to create the new lake house. Drawings featured an expanse of windows to emphasize and frame the horizon. Grant also specified a coffered ceiling in the living room and transom windows across the kitchen and lounge. Allan and Jane hired **Steve Dennison of Dennison Homes** to transform the plans into reality. "Steve is an incredible builder," Alan says. "He can take the design and make it work." **Amanda Thede**, interior design consultant at **K-Interiors**, helped plan and execute the details, including a beautiful Laser-cut wall panel by Sam Davatgar of Artotech. *Continued on page 41*





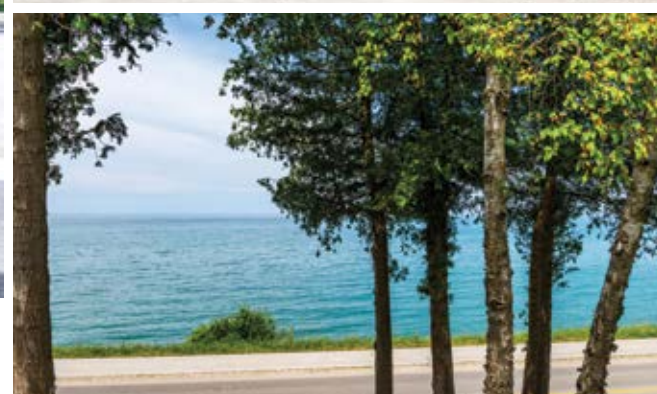
The cottage exterior complements the landscape with a bone-white roof by Agway Metals, white siding and black Fibertec windows, which Allan credits for keeping the house cool, at Steve's suggestion. The lovely outdoor landscaping was completed by **Harvey Design & Build**.

The interior is a relaxing oasis. Black windows along the rear of the house draw your eye straight to the lake view. To the left, the kitchen by **Bruce County Custom Cabinets** and designed by **Kaitlyn Shular**, is breezy and natural with few upper cabinets and a simple tile backsplash. The Caesarstone countertop is from **The Old Barn**. Tiles throughout the home were all selected through Dennison Homes. *Continued on page 42*

RIGHT: The master en suite vanity was built by Bruce County Custom Cabinets. The transom windows above the mirrors provide privacy while letting the sun shine in. The hexagon-tiled floor was sourced through Dennison Homes. **BELOW:** Furniture in the master bedroom came from the couple's Florida home and fits perfectly into this cottage. The day always starts with a peek out the window at the water view.



Bruce County Custom Cabinets replicated built-ins Jane and Allan had in Florida.



ABOVE: The symmetry of the rear facade creates a calming, quiet space that offers different vantages to enjoy the view and sunny days. Harvey Design & Build combined natural materials to create a clean, uncluttered appearance. **FAR LEFT:** Allan and Ned enjoy the sunshine on the front porch. **LEFT:** Board and batten on the front of the home is painted Simple White by Benjamin Moore. The garage door is the Charleston Model by Wayne Dalton. **BOTTOM LEFT:** Lake Huron's beauty is enjoyed from the cottage.

“A HOUSE ALWAYS
SPEAKS TO WHAT
IT NEEDS.”
– Jane Kershaw



The lounge area is the room with the view and its citron ultrasuede sofa adds a pop of colour. The couple love original artwork. In addition to two Douglas Kirton paintings, art throughout reflects their love of Toronto and New York, with photos taken by Allan, as well as a painting from the couple’s favourite restaurant in Toronto on Queen West, La Fenice. The lighting took three months to source, which Jane gathered from various lighting stores. The pale ash floors add a relaxed feel to the home.

“A house always speaks to what it needs,” says Jane, referring to the furnishings. For the most part, the furniture in the house was pulled from former residences. From their condo in Florida they brought a beachy feel, and from their Muskoka cottage, an air of nostalgia. The living room sofa and chairs were sourced through Palazzetti. *Continued on page 44*

LEFT: Summer linens dress one of the guest bedrooms. Simple furnishings and neutral colours maintain a serene and calm atmosphere. Curtains were sourced at Inside Ideas. **TOP:** A clean and simple marble-topped vanity in the guest en suite. The tile on the floor, laid on the diagonal, adds a modern feel.



Photo by Wendy Bye



POLISHED STONE CREATIONS

Your local source for Granite, Marble & Quartz Countertops



15 Celebrating
years
of business excellence!

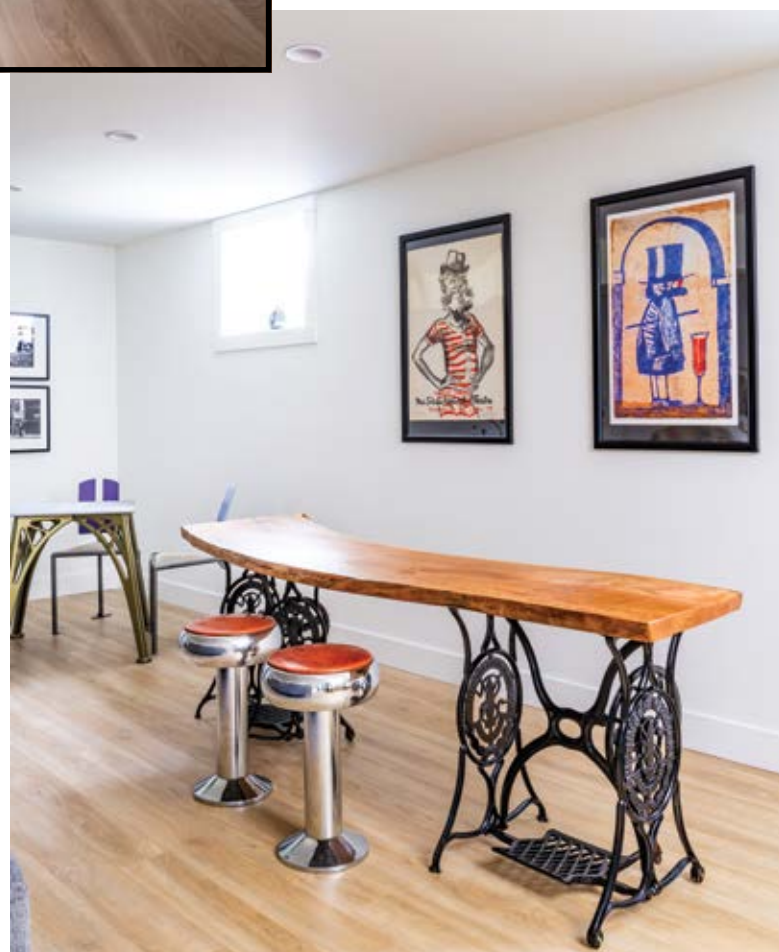
173480 Mulock Road (between Durham & Hanover) 519.369.1710 theoldbarngranite.ca



Stools from K-Interiors complete and enhance the scheme. Jane achieved a clean and compelling look with paint, including **Benjamin Moore's** Oxford White, Dove Wing and White Dove. This simple backdrop ensures the water is the focal point. With light linen window coverings from **Inside Ideas**, the view is never blocked and every sunset can be celebrated and enjoyed.

Allan, Jane and their team considered every detail, from the window panes, the contemporary glass staircase from **Stairworks**, to light fixtures to ensure their home is a welcoming space for family and friends to feel at home at this ideal spot on Lake Huron. **OH**

LEFT: The stairs to the lower level, by Stairworks, maintain the modern aesthetic of the home and allow light to fill the space. Beadboard on the ceiling is repeated from the coffered ceiling. **BELOW LEFT:** The bamboo table rests under a painting of the couple's cottage in Muskoka. Other items hold treasured memories of that retreat. **BELOW:** A live-edge bar uses two antique sewing machines as its base in the lower-level family room.



DESIGN BUILD LOVE

Bruce County CUSTOM CABINETS

519.483.1188
brucecountycustomcabinets.ca

K

INTERIORS

519.832.7040
kaitlynshular.com

DENNISON
HOMES

519.483.1199
dennisonhomes.ca

Visit us at our showroom! | 1211 MacKenzie Rd. in Port Elgin | Open Mon. - Fri., 8am - 3:30pm

3 LUMINOUS LIGHTING TRENDS

Inspired By Throwbacks



STORY **PHYLLIS LUI**
AND ALEEM KASSAM
PHOTOGRAPHY
PROVOKE STUDIOS

In the illuminating world of design and décor, history has a way of repeating itself. At least, the good things from the past seem to find their way back into the spotlight. Today's hottest interior lighting styles are taking a cue from days gone by, but these throwbacks are being revived with a cool, contemporary twist. Here are three lighting trends to keep your eye on in 2019 and beyond, inspired by the ages and back in all their glory.

ART DECO: 1910s-1930s

Art Deco has come a long way from its artful origins in the 1910s in Paris, France. This decadent aesthetic is distinguished by geometric motifs, curved forms, defined silhouettes and the dominant desire to be modern, influencing everything from architecture and furniture to jewelry, fashion and everyday appliances. Remnants of this distinctive style continue to inspire today's trendiest lighting designs. This bodes well for interior designers and homeowners who wish to incorporate a hint of adornment in an otherwise cool, contemporary abode. The avant-garde aesthetic is thoughtfully modernized with warm metals such as gold and copper and trendy geometric forms.

DESIGNER PICK:
Hexagons are hot, baby! They are appearing in everything from lighting to tiles and textiles. Hudson Valley Lighting has a great selection.

Continued on page 48



Discover The Dulux® Difference



Superior Quality, Unbeatable Value

The Dulux brand has always been an industry leader for not only the DIY homeowner but the professional as well, with new innovative technology and environmentally friendly solutions.



This tradition of excellence continues exclusively at :
949 10th Street West, Owen Sound, Tel: 519-376-5121

©2019 PPG Industries, Inc. All Right Reserved.

BUILDING LOTS NOW AVAILABLE IN SOUTHAMPTON



SOUTHAMPTON
LANDING



519-385-0845 | [SOUTHAMPTONLANDING.CA](https://southamptonlanding.ca) | [ALAIRGREYBRUCE.CA](https://alairgreybruce.ca)



OLD HOLLYWOOD GLAMOUR: 1930s-1940s

Vintage romance is the prevailing theme of the equally inspired and inspiring Silver Screen starlet era. Those who seek to bring this luxurious look into the spotlight embrace a “more is more” mentality. (To those who find themselves asking if it’s “too much,” the answer is likely, “it’s just enough.”) Look for sparkle and shine, and overall softness that comes in the form of fabric shades and gentle silhouettes, such as a cascading crystal chandelier.

TIP: A chandelier lends the perfect touch of luxury that the Old Hollywood aesthetic demands. Traditionally featured in dining rooms and front foyers, a crystal chandelier also makes a dreamy addition to a bedroom or bathroom.

MID-CENTURY MODERN: 1950s-1960s

This important style movement continues to affect interior design today. The simple and understated look is all about minimalism and integrating with nature. When it comes to lighting, this enduring aesthetic has never truly gone out of style.

FAVOURITE: One of the most prevalent examples of Mid-century modern today is the Sputnik chandelier, which is well-loved for the simplicity of its glass globes and an unfussy, linear base, lending intriguing illumination with a chic, sculptural focal point.



FUTURE FORWARD: TODAY, TOMORROW & BEYOND

What’s next in the world of lighting and design? The future looks bright indeed, and as with all things these days, technology is the driver of the latest and greatest.

LEDs have created an endless world of possibilities for modern lighting designers, and they have become mainstream thanks to their efficiency, longevity, wide range of colours and temperatures, and their unique applications. They’ve also become more economical, which is great news for all.

Lighting controls are a huge trend and an essential part of every lighting plan. Even the most perfect arrangement of recessed lights, pricey designer fixtures and top-to-bottom accent lighting won’t create the impact you want without the ability to customize. Lighting controls can range from basic fundamentals to high-tech features, so consult a lighting professional to determine what’s available to meet your needs and wants.

One piece of advice we have for all our clients, regardless of their lighting choices, is to ensure all lights are on dimmers. This allows you to adapt the ambience based on your current mood and use of the space. This is especially important with the rise of modern multi-functional rooms and open-concept floor plans.

Don’t forget about the multitude of other options available to you, such as timers, sensors and so forth. For instance, a multi-sensory switch with a motion detector in a bathroom or closet will enhance your day-to-day in a subtle way. Once you have this, you’ll wonder how you ever got along without it.

Then, for the smart-home owner, in the spirit of Google Home and Alexa, wireless and voice-activated lighting is the next big thing.



Whether you’re tempted by the throwbacks, fascinated by the future or you find yourself somewhere in between, consider your lifestyle and consult with a professional who can shed some light on what’s available and what’s possible. **OH**

Phyllis Liu and Aleem Kassam are partners at Vancouver-based Kalu Interiors.

Have us install a fireplace in your home.

REGENCY
TECHNOLOGY PRODUCTS

The Fyre Place & Patio Shop
Since 1973
Located at Highway 6 & 21, Springmount (Near Owen Sound)
519.371.2963 | www.thefyreplace.com

floortē

- ✓ 100% Waterproof
- ✓ Pet Proof
- ✓ High Traffic

Built to endure the most demanding environment.

MILLER'S Home hardware building centre
Sauble Beach
900 Main St., Sauble Beach
519.422.2424

Shaw FLOORS

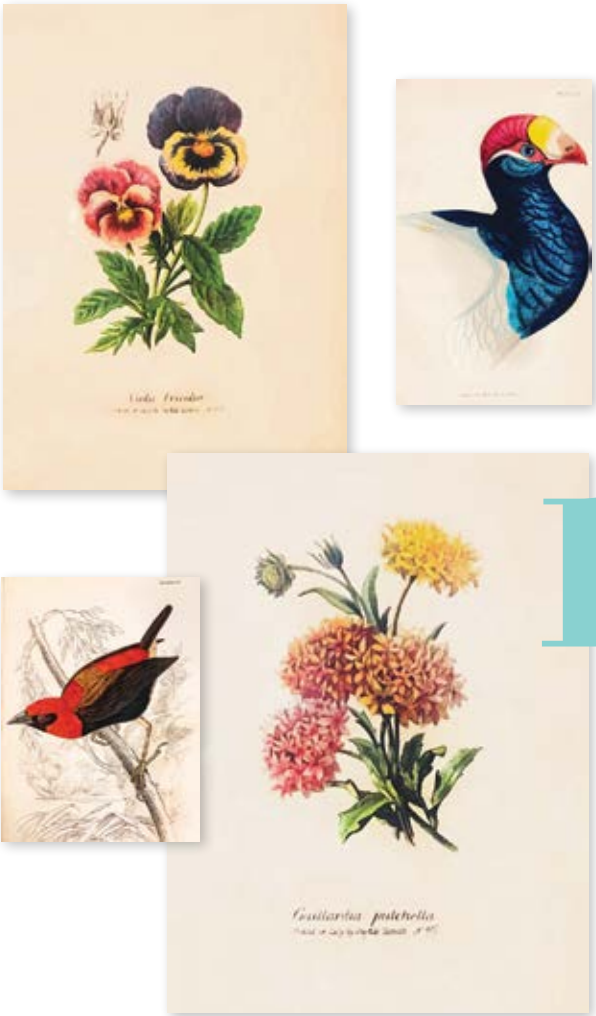
10 WAYS to add VINTAGE STYLE to your home

Gargantuan mahogany dining sets. Towering armoires. Royal Doulton figurines, anyone? If items like this aren't your thing, you're not alone. As *The New York Times* recently reported, thanks to today's small homes and pared-down aesthetic, the market for traditional antiques has shifted sharply in the last two decades.

"As far as decorating, I think we're contemporary," confirms Marlene Cook, owner of the Sunday Antique Market in Toronto. So, why is thrifting all the rage? And why are markets like Marlene's still mobbed on any given weekend? Marlene says that while her urban hipster shoppers give certain items a pass – yup, those dark old furniture suites – they love to snap up quirky vintage and antique pieces from savvy sellers.

Yet the mindset has really changed. "Some people are thinking about upcycling and recycling," she says. "When you buy something from a market like mine or somewhere else, it doesn't go to landfill." Today's buyers also want quality craftsmanship, and investment potential. Above all, says Marlene, rather than rooms stuffed with antiques, buyers want single pieces to inject interest into modern interiors. "It could be a really great piece someone has seen in a magazine. Here they can buy the original. It doesn't have to be a reproduction."

Beyond the actual goods, Marlene says the market experience itself – communal, hands-on, revelatory – is another huge draw today. "People get to talk to our vendors, they can get to shop and touch it and feel it, and see the vibrancy of the colours," she explains. Vendors can also tell you about an object's history, she says, meaning buyers are likely to take home a story along with their fab finds.



Ready to dive into the happy chaos of your local antique market and find some deco treasures of your own? Looking for inspiration, we asked a couple of pros what's flying off the shelves these days.

HERE'S OUR LIST OF MUST-HAVES FOR 2019:

1 BOTANICAL AND FLORAL PRINTS

Bring the outdoors in with framed antique prints. Marlene says, "We had a book dealer with beautiful botanical prints and prints of birds from the mid-1800s and they just sold like hotcakes!"



2 FULL-COLOUR VINTAGE MAPS, GLOBES AND TOYS

Often featured in high-end design magazines, buyers love using these items to add interest to kids' rooms.



4 STERLING SILVER CUTLERY

While you can buy electroplated pieces for a song, pricier sterling silver cutlery elevates any table and is in high demand.

VINTAGE VINYL LPs

Whether for display or listening pleasure, at the St. Jacobs Antique Market, manager Patrick Gilkes says, "Records are still the number-one seller right now."



6 DISPLAY PIECES

From typewriters to vases and sculptures, people are buying vintage objects for display.

5 TEA CUPS & DISH SETS

Want to add superb quality and vintage wow-factor to your table? Patrick says, "Entire dish sets are constantly selling, especially around holidays and Thanksgiving."



8 GLASSWARE

Whether funky cocktail glasses, colourful goblets or delicate stemware, Marlene says glassware sets are hot. "That's something anyone can buy for a party."



7 MID-CENTURY ANYTHING

Vases, coffee tables, credenzas – sellers say the demand for well-designed mid-century pieces remains strong.



9 EARLY ASIAN PIECES

Better-quality antiques, including pottery, are very popular.

10 VINTAGE HARDWARE

It's a fantastic way to transform generic furniture, and dealers see many people hunting for hardware, particularly handles and drawer pulls. **OH**



WEST SHORE STONE & BRICK

Stone & Brick for New Homes & Renovations
Thin Stone Veneers • Mulch (bulk & bagged)
Topsoil/Aggregates • Steps/Flagstone/Rockery
Fire Pit Kits • Paving & Patio Stones
Landscape & Masonry Products

Showroom/Yard is South of Kincardine
1.5km East of Hwy 21 on Conc. 12
519.395.2747 • www.WestShoreStoneandBrick.com

real estate

HOME SECURITY

STORY **WALTER FRANCZYK**
ILLUSTRATION **SHEILA BRITTON**

FROM NO-TECH TO HIGH-TECH

**OPEN WINDOWS, UNLOCKED DOORS
AND VACANT HOMES ARE IRRESISTIBLE
TO WOULD-BE THIEVES.**

When windows open to cooling breezes and the temperatures lure people away from home to the beach or cottage, burglaries are more frequent.

Although crime in Canada has been on the decline for years, insurance companies still pay out millions of dollars to people victimized by break-ins, a cost that drives up home insurance premiums for everyone.

Ontario's rate of burglaries dropped about 70 per cent between 1998 and 2015, one of the country's lowest rates of break-ins, according to the Conference Board of Canada. While the chances of being victimized are lower, it's little cause for complacency. In fact, improved home surveillance and security is one of the factors police attribute to the decline in property crimes.

Homeowners can guard against break-ins and protect their homes and property in a variety of ways, from no-tech common sense to high-tech smart technology.

LOW-TECH

Most burglars rely on hiding, speed and force to break into a home, according to The Co-operators insurance company. Cutting back trees and bushes will deny burglars hiding spots.

Exterior doors and frames of solid wood or steel are harder to break through than hollow-core doors.

Deadbolts and good locks on exterior doors are essential.

Insurance companies urge clients to lock their doors and windows at all times – when they're inside or anytime they leave, even for a brief time in the yard.

Drawing curtains, closing blinds and locking the garage keeps valuable belongings out of sight.

When homeowners are away for an extended period, having the property maintained by cutting the grass and raking leaves will make a home less of a target.

Using timers to control lights and play a radio intermittently will make a vacant house look and sound like people are at home.

Motion-sensing spotlights are recommended for entrances in the back and side yards.

HIGH-TECH

A basic home security system with a burglar alarm can deter break-ins while reducing the cost of insurance.

"An alarm system is not going to keep a burglar out, but it's going to minimize the time they're in the house," says Huronia Alarms president Rob Thorburn Jr. "The loss with an alarm system is much less than without." His company keeps an eye on the properties of 10,000 monitored clients in central Ontario. Its services include burglary and environmental monitoring, water level sensors and smoke and fire alarms.

Letting people know a property is monitored can also deter break-ins. "The hope is that when thieves see a security company's sticker on the premises, they'll move on," says Rob.

Simple alarms that can be monitored and controlled from smartphones, tablets or personal computers are available as do-it-yourself kits. Home Hardware, Canadian Tire and Home Depot all carry easy-to-install home security technology that starts for as little as \$12.98 and ranges up to \$300 or more.

A starter kit that includes a monitor for one window or door, a control hub and a motion detector for one room is sufficient for an apartment, condo or small home. It warns homeowners via their phone, tablet or computer when someone opens a window or steps into a room.

An inexpensive sensor placed near water sources can detect and warn about basement flooding or plumbing leaks. It will also notify homeowners if the home temperature drops below 4°C.

Easy-to-install smart locks can be controlled with a smartphone app or added to a home automation hub that controls lights and thermostats.

Many of the latest DIY systems can be expanded to include garage-door openers, surveillance cameras, door locks, and smoke and carbon monoxide detectors.

Video doorbells can detect motion when someone approaches the front door. They'll alert homeowners on their mobile device or computer, allowing them to see, hear and speak to visitors from almost anywhere.

A wide array of interior and exterior security cameras can notify the owner when someone enters or leaves the home. Equipped with speakers and microphones, they allow homeowners to speak to and hear anyone on camera. Some cameras are equipped with motion detectors, flood lights, night vision and sirens that can ward off intruders.



Certain surveillance cameras can store video on an SD card or in the cloud, where a subscription fee applies.

Voice control through spoken commands on Apple Siri, Amazon Alexa or Google Assistant is available on many do-it-yourself and top-of-the-line systems.

High-end security systems with lots of features require expert installation. Different technologies use different wireless protocols, so getting good advice before buying is always a good idea.

Rob recommends homeowners start by calling a security consultant for an on-site visit. "I suggest you always enlist a professional," he says. A consultant can provide a proposal and security recommendations. Different people have different needs, he says. Some may use a security system every night, some only when they go out, and others every second of the day, he explains. "It really comes down to the user and what they want," he says. "We want to provide you with the security level that makes you feel comfortable when you put your head down at night." **OH**



Our team at **Advantage Royal Group** can assist with **all your real estate needs** across **Grey & Bruce counties**.

520244 Thistlewood Road | \$749,900



Beautiful, well-kept home. A great opportunity to own acreage in Grey Highlands. 5 beds & 4 baths, bright & spacious home. The approx. 26-acre property is mainly treed w/ a large clearing, yard area around the home & landscaped with natural gardens.

215588 Concession 4 | \$672,000



50 acre hobby farm w/ large bungalow on a quiet road near Williamsford. 4 bedroom home or weekend retreat. Large 50' X 60' barn in great condition. Huge shop 32' x 40' that features an industrial car lift. 20 acres workable & approx. 8 acres planted pine saplings.

839 Spring Creek Road | \$850,000



127 acres for a custom build! 100 acres cash crop & 27 acres bush. Sauble River creates south boundary. 96' x 56' freespan w/cattle squeeze. 82' x 40' drive shed w/a large insulated shop.

Scott Crowther
Sales Representative,
Team Lead Advantage Royal Group

519-379-7192 | ScottCrowther.com
scott@advantageroyalgroup.com
900 10th St. West, Owen Sound, ON. N4K 5R9

DIAMOND AWARD 2014-2015-2016 TOP 3%
RED DIAMOND AWARD 2017-2018 TOP 2%
ROYAL LEPAGE RCR Realty, Brokerage, Independently Owned & Operated



THE STYLE: Shortly after purchasing the business and to better serve their customers, Phil and George moved Topnotch to its current location, a beautiful rural property on a bend in the Blind Creek on Fordwich Line, near Gorrie. Now much of the furniture they make is on display in their 5,000 sq. ft. showroom, including their one-of-a-kind statement pieces.

A bedroom featuring a rustic wooden bed frame with a headboard and footboard, dressed in white linens and a dark fur throw. The room includes a large wooden dresser with a mirror, a nightstand, and a window with a wooden frame.



WHAT'S HOT: Clients are loving live-edge dining tables with centre glass or resin inserts and hollow trunk bases from ancient trees with glass revealing the log's interior. They carry an incredible selection of finishes and the ability to colour-match any paint colour, so finding that forever piece for your home is possible at Topnotch Furniture. **OH**



89446 Fordwich Line, Gorrie
topnotchfurniture.com
519.335.3213

★★★★★★★★★★★★★★★★ PHOTOGRAPHY **SARAH TACOMA** ★★★★★★★★★★★★★★★★★★



Anything But Boring.

For an out of the ordinary renovation experience call Hill Build.



CUTTING BOARD MESSAGE STATION

- 1** Determine where to place the paper roll, supporting craft sticks, cork board and clip clamps. Mark with a pencil.
- 2** Thread twine through paper roll and tie around board handle to desired length.
- 3** Attach craft sticks to the board with upholstery tacks, making sure to include small washers between stick and board to allow paper to slide smoothly.
- 4** Slide end of paper roll through both craft sticks.
- 5** Attach clips to left side with a tack, nail or screw.
- 6** Tap one tack into the top right side of board. Tie twine to pen and hang from tack.
- 7** Cut cork board to fit on right side between paper and edge of board. Glue cork board in place.

MATERIALS

- Cutting board
- Paper roll
- Clip clamps with holes
- Upholstery tack
- Cork board
- Pencil
- Pen
- Twine
- Craft sticks
- Glue
- 4 washers

PROJECT
DAWN MCCONNELL
PHOTOGRAPHY
TARA CHATTELL

Now you're all set to start making lists and reminders for yourself. Think about how organized you'll be! **OH**

SOUTH-PORT MECHANICAL GEOTHERMAL



Mechanical



Geothermal



Come visit us at 1362 Concession 9, Kincardine 519-396-2665
south-portmechanical.com





YOUR GARAGE = endless possibilities

STORY **RACHAEL HAVENS** | PHOTOGRAPHY **SANDY MACKAY**

THE GARAGE IS EXPERIENCING A RENAISSANCE. PEOPLE ARE LOOKING AT THESE SPACES TYPICALLY USED FOR PARKING CARS AND SEEING POTENTIAL LIVING SPACE.

Jennifer Johnson, who owns **Valley Home Improvements** with her husband **Dan Johnson**, has recently taken on three garage projects – one new build and two conversions. She firmly believes that “most people love their home, they just need a little more space.” For this reason, she is seeing an increase in the percentage of people choosing to do renovations, rather than a custom home build.

Your garage could be filled with untapped potential. One of the best ways to use the space is as a secondary unit. These apartments can house your parents, kids or they can help you earn extra income, whether as an Airbnb or a rental. With the price of real estate reaching new heights, a secondary unit can be a cost-effective way to finance your home. *Continued on page 62*



Jennifer Johnson of Valley Home Improvements.



OPPOSITE: A large storage closet added to the garage space created this niche in the family room for the children to play. All building materials were supplied by Centre Grey Builders & Supplies. **LEFT:** The flooring is wood-like ceramic tile. Toys are kept neat and tidy with baskets, which also make clean-up easy for parents and children.



OLD WAY



BETTER WAY





519-924-0025

STARTING OFF
ON A **SOLID FOUNDATION**
SINCE 1995

POSTECHPILES.COM

MORE *living* SPACE

Many people are finding they don't need an entire secondary apartment, just a little more living space for their own home. This was exactly the case for one young, growing Markdale family who converted their attached garage into a living room and playroom for their kids. This family was outgrowing their space, so they started to rethink it. They realized they wanted a living space more than they wanted a garage.

Jennifer points out the “family might have had to consider buying a bigger home, but now they don't have to.” She also emphasizes the simplicity of this conversion. Their garage already had electricity, so all that was needed was flooring, drywall and paint. *Continued on page 64*



ABOVE: This conversion added about 550 square feet of living space. Only one window was added over the children's play area, matching the existing windows.
LEFT: The sliding barn door was built by the team at Valley Home Improvements. The distressed paint finish was applied by Jennifer Johnson. Walls are Balboa Mist by Benjamin Moore.





VALLEY
HOME IMPROVEMENTS

Residential Construction • Project Management
Kitchen & Bathrooms • Additions & Garages
Siding, Soffit & Fascia • Renovations & More • Aging at Home

*All the expertise
you need,
under one roof.*

Over the many years, of building decks to building homes, we've acquired the knowledge and skills to tackle any home renovation. Big or small.

Planning to renovate? Feeling overwhelmed?
Aging and want to stay in your home?
Give us a call.

We'll be happy to sit down with you and discuss your options.

519.924.0025
valleyhomeimprovements.ca



This space on the upper floor of the detached garage is approximately 1,000 square feet. The view through the large windows of the farm fields is peaceful and relaxing. **BELOW:** The antique desk and map of Canada have found a new home in this space.

BUILD WHAT *you want*

Jennifer points out that the main difficulty with converting an existing garage is “fitting what you want into an existing space if you don’t want to change the footprint.” This is what led another Markdale couple to build an entirely new space.

This garage is two storeys, with parking, storage and a gym on the bottom floor and an apartment on the top. In-floor heating makes the space, especially the gym, comfortable in all four seasons. The upper apartment is used as a guest suite for family and friends, which offers space and independence while keeping loved ones nearby.

Continued on page 66



LEFT & BELOW: Tucked under the soaring pine ceiling is a bar area with pine cabinets. The red lacquered Chinese cupboard adds a pop of colour. A poured concrete counter was requested by the homeowner. The print is by Nathalie Vachon. **BOTTOM LEFT:** The glass entrance doors lead to stairs taking you down to ground level. There is enough room on the porch landing for table and chairs to sit and enjoy the far-reaching view. **BOTTOM RIGHT:** Red floor tiles in the bathroom were picked out by the homeowner. Pendant lights match the tile.





“I DON’T SEE CHALLENGES, I SEE POSSIBILITIES.”

– Jennifer Johnson

LEFT: Natural pine barn doors close the bedroom off from the living area. The bedroom wall stops below the ceiling to keep the space open. **BOTTOM LEFT:** A king-size bed hardly takes up any space in the large bright room. Water radiant heat keeps the unit warm and toasty in cooler weather. **BELOW:** The white pedestal sink in the bathroom makes the floor stand out. Extra storage was captured under the eaves with access from the bathroom and bedroom.



HOUSE RULES

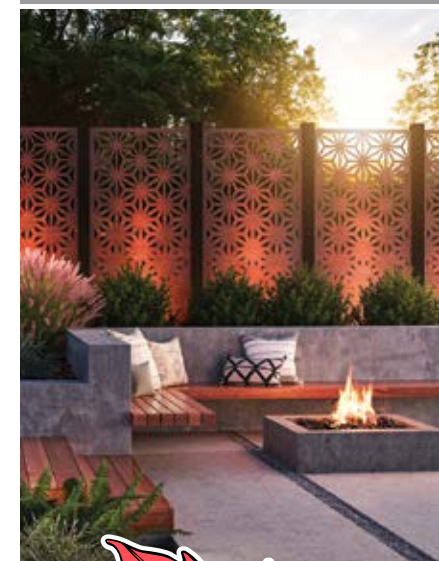
BOOK A DESIGN CONSULTATION WITH ONE OF OUR DESIGNERS TODAY

For more information call, email or walk in and take a tour of our showroom
341152 Grey Rd. 28
Hanover, Ont.
226-434-1234
info@houserulesdesign.com
www.houserulesdesign.com



FLOORING LIGHTING PLUMBING FURNITURE TEXTILES PAINT

RESIDENTIAL - COMMERCIAL - AGRICULTURE - FREE ESTIMATES & PLANNING



Built Wright
FENCING
Chesley
“Changing the look of your property.”

Ball Diamonds • Tennis Courts • Swimming Pools • Vinyl Farm Fence • Chain Link • Wrought Iron • Wood Privacy

519.387.5022
builtwrightfencing.ca

Follow us on Facebook for more details.

in-law SUITE

The desire to have loved ones nearby also inspired a Eugenia homeowner to complete a garage conversion she has been considering for years. A fall that left her father-in-law in hospital was the catalyst for creating a suite in her garage for her own 91-year-old mother, who had been living alone.

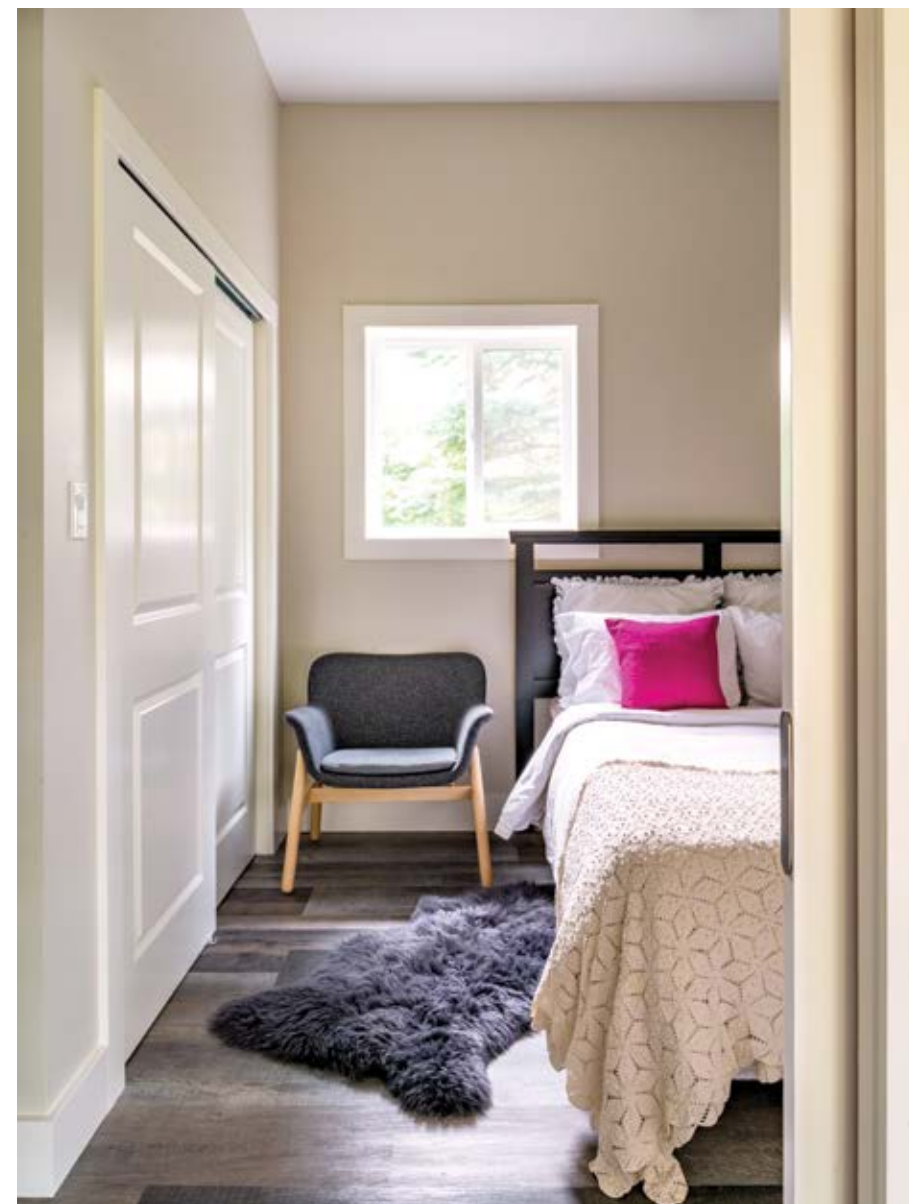
The garage itself is 40 by 20 feet, and half is allotted to the apartment. The space is simple, with a living space, bedroom and bathroom, all connected to the main house by a beamed breezeway. This conversion now provides peace of mind for the homeowner, as well as a happy and safe home for her mother.



RIGHT & FAR RIGHT: You can easily turn on the water taps before entering the barrier-free shower. The dark tile floors and lighter walls make the space easier to navigate with reduced eyesight. Pocket doors were used for interior doors, keeping the space unobstructed and open. **BELOW:** The bedroom comfortably fits a queen size bed. The closet has large sliding doors for easy access. The wall colour is Wind's Breath with Cloud White trim, both from Benjamin Moore. All painting was done by Jeff Lockwood Painting Services.



TOP: Nestled under old willow trees, this 372 sq. ft. apartment has a comfortable seating area at one end of the main room. **ABOVE:** The homeowner's mother has the choice of eating on her own or walking along the breezeway to eat with her daughter's family. **LEFT:** The L-shaped kitchen (Plumbing by Cook's) is compact, open and functional. The stove has burners with a safety feature; when a pot is moved off the burner, it automatically turns off.



This project was particularly near and dear to Jennifer's heart as a Certified Aging-in-Place Specialist. This certification designates her as an expert in ensuring a space is secure for older generations and extending the years they are able to spend at home. The homeowner emphasizes the pivotal role Jennifer played, "She was very determined to get it done and I really appreciated that from her. She was invested."

Jennifer echoes these sentiments, emphasizing "These projects mean the world to us." When asked about the challenges associated with garage conversions and secondary units, she appears deep in thought. Finally, she says "I love converting those spaces. I don't see challenges, I see possibilities." *Continued on page 70*



ABOVE: A covered breezeway by the entrance to the apartment offers a spot to enjoy the nice weather. Mac Taylor Septic added the additional system needed for this project. **RIGHT:** The renovation reserved space for vehicle parking, storage and a mechanical room, including the in-floor heat for living space. Ash Park Electrical did all of the electrical.



Jen's Tips FOR CREATING A SECONDARY UNIT

YOUR LOCAL MUNICIPALITY IS WILLING TO WORK WITH YOU.

Bylaws regarding secondary units are governed by municipalities, not by provincial code. Each municipality has different rules when it comes to development fees, lot coverage and zoning, but they tend to be both supportive and forward-thinking about garage conversions.

REGULATIONS ARE EVOLVING.

The municipality's hands are tied by bylaws, but these are under review, improving and becoming inclusive of secondary units. For example, current regulations centre around creating an apartment in either a basement or attached garage, but bylaws are also becoming inclusive of detached garages.

BE AWARE OF POTENTIAL SEPTIC UPGRADES.

Adding a secondary unit may require a septic system review with the potential of a required upgrade. Make sure to check if an increase in living space means a bigger system is needed.

DON'T BE AFRAID TO THINK OUTSIDE THE BOX.

The sky is the limit on garage conversions. These spaces can be used as multi-generational units (for parents or kids), guests' quarters or rental units, but also as increased living space – perhaps a kids' playroom, gym or new master suite. Whether you are reconfiguring an existing space or building a new one, your garage could have countless possibilities. **OH**

**OUR BEST WORK
IS OUT OF SIGHT**
and that's the way
you want it.



MAC TAYLOR
CORPORATION

SEPTIC SYSTEMS FOR HOMES AND COTTAGES

DESIGN & PERMIT • SOIL SAMPLING • INSTALLATION • MAINTENANCE PROGRAMS

www.mactaylor.com 519-794-2380

The **most energy efficient**
homes on the market.



High-R
Construction

Custom Home Builder
Excavating | Foundations
Septic Installations | Insulated Concrete Forms Specialist

519-377-7217 | 519-377-7331
www.HighR.ca



**Interior & Exterior
Residential & Commercial
Grey Bruce & Simcoe Counties**

Top quality paints, primers & stains
On-site airless spraying • Wallpaper removal & hanging
Drywall repair • Staircase & trim refinishing

**LOCKWOOD
PAINTING**
519-372-3008
www.lockwoodpainting.ca



BUY DIRECT FROM THE SAWMILL!



■ BUYER OF STANDING TIMBER
■ ALL DECKING MATERIALS
■ BOARD & BATTEN ■ POST & BEAM
■ WHITE PINE FLOORING ■ T&G SIDING

High Quality: White Pine, Red Pine, Cedar, Hemlock
1" Boards - 2" Dimension; 4" and 6" Squares

CALL FOR QUOTE
MOGGIE VALLEY TIMBER INC.
684063 Sideroad 30, Holland Centre, ON
519-794-0018
moggievalley@gmail.com
Mon - Thurs - 7:30am to 5:30pm
Friday - 7:30am to 12:30pm

THE *Right* CALL

PHOTOGRAPHY SARAH TACOMA

You'll have peace of mind when you put your next project in the right local hands.

BEST FALL COLOUR:
Saugeen First Nation Amphitheatre.

AT WORK

Known For: Custom renovations, new builds and great customer service. **Current Trend:** Modern style and finishes. **Current Project:** A beach house, to be primarily used as a man-cave.

BRYDEN HAMILTON
OWNER

Blackland Construction Ltd.

We provide peace of mind with our experience, tradespeople and customer relations. We have been renovating, building and project managing for 14 years. We offer a highly personalized experience for our customers that is supported by skilled, local tradespeople.

AT HOME

Renovation Dreams: Finding an older home in Southampton and adding custom features that will complement the original ones. **Where Do You Buy Your Apples:** Smith's Apples and Farm Market. **Turkey or Ham:** Turkey, as long as there is great stuffing! **Morning Coffee or Tea:** French pressed coffee.

AT WORK

#1 Product You Sell: Both recreational and full-time living properties. **Current Trend:** Baby boomers preparing for their retirement dreams. **Overlooked GB Area:** It seems as if everyone is drawn to all areas of the Grey & Bruce community, depending on their lifestyle.

RUTHANNE RISK

SALES REPRESENTATIVE

Royal LePage RCR Realty

My goal is to make each transaction, whether you are the seller or buyer, a good experience and one that you come away from feeling happy. I'd like to make each client feel like they are in good hands with a high standard of professional courtesy and a personal, honest approach.

FALL COLOUR BONANZA:
The Beaver Valley.

AT HOME

Renovation Dream: Making a bathroom big enough for a square dance and tranquil enough to feel like a spa. **Best Place To Buy Apples:** Keady Market. **Turkey or Ham:** Turkey! **Morning Coffee or Tea:** Dark roast coffee.



Continued on page 74



AT WORK

#1 Product That You Sell: Property & Casualty Insurance. **Trend:** Ride-sharing and home-sharing exposures, such as Uber and Airbnb.

ERIN AT HOME

Turkey Or Ham: Turkey. **Renovation Plans:** Add a feature wall in my living room. **Best Place To Buy Apples:** Hi-Berry Farm. **Morning Tea or Coffee:** Coffee.

REBECCA AT HOME

Turkey Or Ham: Ham. **Renovation Plans:** Build a garage. **Best Place To Buy Apples:** Smith's Apple Farm. **Morning Tea or Coffee:** Tea.

ERIN McCONNELL-KENNY & REBECCA MATCHES

REGISTERED INSURANCE BROKERS

CMR Insurance

We offer peace of mind by ensuring our clients are adequately covered in the event of a loss. We tailor each insurance policy to provide customized coverage based on our clients' needs.

BEST FALL COLOURS IN CANADA: New Brunswick.

AT WORK

#1 Product: The plant material we grow in our greenhouses. **Current Trend:** With busy lives, customers want anything low maintenance that can take care of itself. **Current Project:** We are creating a backyard living space consisting of flagstone walkways, patio and gardens.

DON & WENDY CAMERON

OWNERS

Peninsula Out of Doors

With our expert advice, your outside living space can become a backyard paradise. We can guide you to the right plant material for the right location or we can do all the work. We will take ideas and create a design that encompasses irrigation, hardscapes, shrubs and flower beds as well as custom containers.

AT HOME

Dream Renovation: Cottage makeover. **Best Apple-Buying Spot:** Meaford. **Turkey or Ham:** Turkey. **Morning Drink:** Good coffee!



Continued on page 76



AMANDA & JOSE ANDINO RODRIGUEZ

OWNERS

And-Rod Construction Ltd.

Each project starts with our pre-construction service and we recognize that each project is unique. We listen carefully well before the first shovel hits the ground, then our integrated approach kicks into high gear. We offer the certainty you can count on from the first day of your project to its completion.

AT WORK

#1 Product You Sell:

High-quality pre-finished wood siding. **Trends:** Elaborate walk-in closets. **Current Project:** Net-zero solar-powered renovation/major addition on the shores of Georgian Bay in Tobermory.

BEST FALL COLOURS:
Manitoulin Island and North.

AT HOME

Reno Dream:

An elaborate outdoor living space/oasis with a pool, deck, gardens and cooking area. **Turkey Or Ham:** Turkey, but just the dark meat for both of us. **Morning Tea or Coffee:** A cup of GOOD coffee!

AT HOME

Renovation Dreams:

My kids being old enough so I can do a renovation without fear of the paint being coloured with crayons.

Best Place To Buy Apples: Any farmer's market in Grey-Bruce. **Turkey Or Ham:** Turkey. **Morning Coffee or Tea:** Neither, but if I had to, a London Fog.

BEST FALL COLOURS:
Big Bay.

MEGHAN LIPKA

OWNER

Meg's Drywall

We are a fully insured company based in Owen Sound and serving Grey and Bruce counties. We specialize in precise drywall finishing to get your job paint-ready. We are an equal opportunity company with a staff of men and women, each bringing the expertise required to satisfy even the most eagle-eyed customer.

AT WORK

#1 Service:

We install drywall and finishes with precision, ready for your painter to do the finishing touch. **Current Trends:** Reveal bead, smooth ceilings and square corners. **Current Project:** A custom condo in downtown Owen Sound as well as a full-house renovation.



Continued on page 78



AT WORK

#1 Service: 3D renderings and CAD drawings. **Current Trends:** Natural elements. They add warmth to a space. **Current Project:** A custom waterfront home.

KATE ROBINSON
OWNER

Home Town Design

We assist clients through the entire design process. From space planning to sourcing materials and furnishing, we work closely with our clients to ensure all details and expectations are met.

AT HOME

Renovation Dreams: To restore a log home. **Where Do You Buy Apples:** Smith's Apples for the best Honey Crisp. **Turkey Or Ham:** Definitely ham! **Morning Coffee or Tea:** Homemade vanilla latte, not too sweet.

FALL COLOUR
HOTSPOT:
Old Baldy
Look-out.

Continued on page 80

TRADE UP TO TOUGH

Experience why Mahindra is the World's #1 Selling Tractor, and the Fastest-Growing UTV Brand in North America.

Mahindra
TOUGHEST
UTILITY VEHICLES
ON EARTH

Mahindra
Tractors & Utility Vehicles

7 YEAR
LIMITED POWERTRAIN
WARRANTY
ON TRACTORS

The Better Way To Build

BEAVER
HOMES & COTTAGES

Kitchen
Both
Flooring
Beaver Homes

WIARTON
Design Centre

a division of the Wiarton Home Building Centre

160 Berford Street
Wiarton ON
519.534.5599
wiartonhhbc.com

AT WORK

Top Selling Product:

York two-stage energy efficient gas or propane furnaces. **Current Trends:** Due to increased liability costs, oil is being replaced by propane. Also, the installation of ductless heat pumps.

ROB & ERIN WEPPLER

OWNERS
Air-Tech Mechanical

As a reputable heating, ventilation and air conditioning (HVAC) business, we are committed to keeping our loyal commercial and residential customers comfortable in their homes and businesses throughout the changing seasons. Our staff consistently strives to keep their HVAC units up and running.



AT HOME

Reno Dreams: Someday having a cottage by the water.
Best Spot To Buy Apples: Right next door at the Keady Market.
Turkey or Ham: Can't we have both? **Hot Morning Drink:** Zavida Hazelnut Vanilla Bean black coffee for both of us.

BEST FALL COLOURS:
Kemble Mountain, where Erin grew up.

Continued on page 82



Closets & Garages
Blinds & Shades
Rubber & Epoxy
Flooring
Enclosures & Awnings
Decking & Railings
& More!



your **HOME EXTRAS**
SPECIALISTS

WILSON
SOLUTIONS

Contact us for a free estimate.
We'll create a 3D model to help visualize the end result.

P 519.369.8225

info@wilsonsolutions.ca

www.wilsonsolutions.ca

AT WORK

Current Trends: People are loving anything cactus right now and macrame has made a mad comeback. **Current Project:** Helping clients make their new custom build feel like home by adding all the finishing touches.

KAITLYN SHULAR
PARTNER

K-Interiors

We take all the second guessing out of how to decorate your home. Whether it's what colour to paint or what piece of furniture or art to buy, we are there to help every step of the way. You know what you like, and we know where to find it and how to bring it to reality.



PHOTO: SANDY MACKAY

AT HOME

Renovation Dreams:

I would love to build a small cabin on Lake Huron that has lots of natural light and bright airy finishes. **Where Do You Buy Fall Apples:** Smith's Apple Farm **Turkey Or Ham:** Turkey, dark meat every time. **Morning Drink:** I love an Americano Misto from Rabbit Dash.

FALL COLOURS:

Walking along the Saugeen River by the Southampton bridge and Lighthouse. OH

SEE OUR DIRECTORY FOR ALL CONTACT INFORMATION.

519-669-8709

Wallenstein, ON | frontierequipsales.com

Select Units in Stock & Ready to Work

COMPACTION DOMINATION

Your Full-Service Dealer | Parts & Service Warranty

The Municipality of **Grey Highlands** *The place for all seasons!*

FLESHERTON/MARKDALE
HOME HARDWARE

Flesherton & Markdale

Markdale and Flesherton Home Hardware for all your paint, plumbing, electrical, hardware, household and outdoor needs. Markdale now carrying a wide selection of safety footwear with the best brands at great prices. Come in and check out our new product lines. As always, our friendly staff are here to help.

Markdale
519.986.3011
markdalehomehardware.ca

Flesherton
519.924.2430
fleshertonhomehardware.ca

CENTRE GREY
BUILDING SUPPLIES

Your one stop home building and improvement store. We carry lumber, insulation, plumbing, electrical, roofing, handtools, windows, doors, paint, cabinets, and countertops. Free delivery and estimates.

74 Lorne St., Markdale
519.986.2641
1.800.461.7093

TOP O'THE ROCK

Everything you need in 1 stop Grocery-Deli-Bakery and More **ROTISSERIE CHICKEN & WINGS** The BEST GOURMET pizza! Every Order Custom Made! Daily Lunch & Dinner Specials Many Locally Made Entrees & Desserts **QUICK & EASY** We hold ourselves to a higher standard. **YOURS!** Open Daily 7:30 a.m.

Grey Road #13
Eugenia
519.924.3244 519.924.3185

tranquility BASE

STORY **KRISTIN SCHNELTEN**
PHOTOGRAPHY **SANDY MACKAY**
FLOWER ARRANGEMENTS
COLLINGWOOD FLOWERS
AND HOME DÉCOR



Melissa Emke, Anne, the homeowner, and Pliny Loucks chat on the rear deck.

Views. Pastoral and tranquil, far-reaching and ever-present views.

Situated on a broad hilltop south of Thornbury, this impressive vacation property is surrounded by farmland and forests, through which flow creeks, rivers and gravel roads – each leading your eye to that deep sapphire of Georgian Bay.

The parcel of land was a dream find for the homeowners, who spent their youths in the area but have since moved overseas. “We looked for this exact property for years, and jumped at the opportunity when it came available,” says Anne.

Aiming to showcase their spectacular views and with an appreciation for the particular style of construction, the homeowners chose timber frame design – and hired **Pliny Loucks** of **The Great Lakes Frame Company** to bring their dream house to life. *Continued on page 86*

ABOVE: The panoramic view of the Beaver Valley and Thornbury below this spectacular timber frame home. **RIGHT:** Anne’s horse Gwen is an Irish Sport Horse. **FAR RIGHT:** Stone and timbers create a warm welcome for guests as they approach the front entrance.





The soaring stone fireplace dominates the great room. The stone extends to a feature wall that holds the television. The 12-foot timber table was built for the space by The Great Lakes Frame Company. **BOTTOM LEFT:** Open treads on the stairs let light move between the timbers, iron balustrades and simple acorn newel posts.



“We found Pliny after touring a local home he had built, and just falling in love with it. We really needed just the right person for our project, and it didn’t take long at all for us to build a relationship with him. Pliny’s sense of humour and patience with our project meant so much to us,” says Anne.

With Melissa Emke, a full-time architectural designer with The Great Lakes Frame Company, the team was able to design a house that fit the homeowners’ specific needs – including a carriage house apartment for their daughter, who manages the small on-site equestrian centre.

Timber frame construction allowed the homeowners the flexibility they hoped for, and the generous, open plan created room for amending the design along the way. With five separate structures combined into one frame, they were able to move and replace elements of their floor plan as they

moved through the building process.

Pliny and his team have fine-tuned their construction process over the past 30 years, beginning with the sourcing of timbers (predominantly Ontario White Pine). Their timbers arrive from sawmills in Ontario and BC cut to square and are planed to size in Pliny’s workshop. His team notches each mortise and tenon joint by hand with mallet and chisel, using hand-pointed pegs made by a local Amish woodworker.

Installing structural insulated panels (SIPs) between the timbers, along with high-efficiency boilers (from **Quality Air Systems** in Chatsworth) and windows (sourced from **Van Dolder’s Custom Exteriors**), this home is extremely energy efficient, far beyond building code. In fact, with the planned future addition of renewable energy, “It’s built to a near-zero-energy standard,” says Pliny.

Continued on page 88



The large windows from Van Dolder’s Custom Exteriors command the view enjoyed throughout the main floor. The glass-fronted fireplace from Chantico Fireplace Gallery sends its warmth into the room and to everyone seated on the leather sofas.



LEFT: A bar-height, live-edge table offers a casual spot to sit and watch the chef. The tile floor is laid on the diagonal and its rich earth tones complement the custom wood cabinets. Electrical was installed by Grey Northern Powerline Inc. Apples courtesy of Goldsmith's Orchard Market. **BELOW:** The intricate design of a horse's head with its flowing mane was crafted by Ron Cuddy. Positioned by a lower-level entrance, it appears as a floor mat. **BOTTOM:** The homeowners designed the island (The Stone Shop) with a bar area on one side. Two wine fridges and a sink help expedite drinks to guests.



A second seating area in the great room has a double-sided propane fireplace that can also be enjoyed in the kitchen. The detail of the base of the custom dining table shows the craftsmanship of the mortise and tenon and hand-pointed pegs. **BELOW:** A folding wall of windows opens the kitchen area to the rear deck. The covered seating area has an outdoor kitchen and skylights.

Throughout the home, timber is thoughtfully balanced with stone and glass, including a floor-to-ceiling stone fireplace (installed by [Chantico Fireplace Gallery](#), with stonework by [McCutcheon Masonry](#)) with guillotine glass front door and timber stairs with metal-insert railings.

Anne, a former interior design specialist, appreciates these design elements and the simplistic palette they create, including the handmade interior and exterior doors by [Desboro Doors](#), trim by [Timeless Materials](#) in Durham, and warm hardwood from [BreezeWood Forest Products](#). Tile work includes custom horseshoe inlays that bring additional warmth, "We host friends from around the world, and really wanted it to be a welcome, restful space, focusing on the natural elements."

Their visitors are often found in the kitchen, aiding in food preparation – which is just what the couple planned when they designed the space. The superior craftsmanship of the cabinetry, made by a local Amish carpenter, is complemented by stone countertops from [The Stone Shop](#). *Continued on page 92*





LEFT: Anne leads Gwen to the pasture. The timber frame detail on the barn is by The Great Lakes Frame Company.
BELOW LEFT: Looking through the barn from the main entrance, a glimpse of the riding arena can be seen through the double doors.
BELOW RIGHT: Behind the kitchen is the entrance to the garage. Large nails act as hooks for coats and hats and the benches offer a spot to comfortably put on boots. A guest bathroom is also located nearby.



Exquisite handcrafted timber frame homes
519.794.0400 WWW.GREATLAKESFRAME.COM



An additional outdoor kitchen, adjacent to the main living space and completely covered from the elements, welcomes guests during the warmer seasons, boasting skylights and integrated Bluetooth speakers installed by **Georgian Audio Video**.

"We're so happy with the entire project," says Anne, who notes it would not have been complete without the barn and riding facility, where they're able to spend so much time with their beloved horses. The home's ample open spaces and guest rooms offer opportunities to share their vacation home with others who share their passions, frequently hosting horse, yoga and spiritual workshops. *Continued on page 94*

LEFT: The full effect of the intricate timber work can be viewed from the second-floor balcony. The double-height windows frame the view of Georgian Bay.



ABOVE LEFT: This antique dresser is surrounded by the timber-framed walls. Wood for the trim work was sourced at Timeless Materials in Durham. **ABOVE RIGHT:** In the en suite to the beach bedroom, Ron Cuddy has worked his magic on the tile work in the shower so that you can almost hear the sound of waves hitting the sand. **RIGHT:** In one of the bedrooms, the casement window over the door (Desboro Doors) to the en suite has a stained-glass insert. The peaked roofline creates interesting angles and guarantees that no bedrooms are alike.

ENJOY THE OUTDOORS



MICHEAL'S STABLING DEVELOPMENTS

702904 Sideroad 5 (corner with HWY 6)
Williamsford, ON

mpyfferoen@sympatico.ca

519 794 3933

www.sgate.ca

GREY NORTHERN POWERLINE INC.

ELECTRICAL SERVICES • NEW & UPGRADES

Underground
& Overhead

Off Road Specialist

Residential, Commercial,
Industrial & Agricultural
Electrical Wiring

Street & Yard Lighting
& Generators

MARKDALE ONTARIO
519.986.4138
GREYNORTHERN@EVERUS.CA

Desboro DOORS
Custom Exterior & Interior Doors

The Doorway to Your Dream Home Awaits!

Custom Glass & Casing
Wood Finishing • Custom Designs
All Wood Types Incl. Reclaimed Lumber
Installation

Tel: 519.363.5635
www.DesboroDoors.com
info@desborodoors.com
135830, R.R. 1 • Concession 8 • Desboro, ON





LEFT: This second-floor bedroom has a comfortable seating area with a view of the Beaver Valley. **BELOW:** The vessel tub in the master en suite sits next to the large glass-enclosed shower. Earth-tone tile work adds a warmth to the room. All plumbing by Mueller Plumbing Contractors. **BOTTOM:** Sitting in a corner of the master bedroom, a Jøtul fireplace adds ambience to cold nights. A sofa at the end of the bed offers a quiet place to contemplate the view through the sliding glass doors.



Building relationships – be it with the horses, or with family and guests – is important to the homeowners, who brought this focus to their house-building experience, as well.

After the multi-year construction project came to a close, Anne and her husband hosted Pliny and his family “They were such gracious hosts,” recalls Pliny, “And we really had a lot of fun – just as we did building the house.” **OH**



Experience this amazing fireplace burning at our Craigeith location.


CHANTICO
GALLERY

Chantico Gallery
209784 Hwy 26
Blue Mountains, ON

Chantico Countryside
158185 7th Line
Meaford, ON

705.445.9688

ChanticoFireplaces.com

SALES . INSTALLATIONS . SERVICE



PENINSULA OVERHEAD DOORS INC.

For over 25 years, **Peninsula Overhead Doors** has been welcoming customers to our showroom to guide them through their Garage Door and Opener purchases. Styles have changed dramatically, new colour options are rapidly becoming available and Garage Door Opener technology is constantly evolving.

With these changes we too have decided it was time for a drastic change. In February of this year we began demolition and reconstruction of our showroom. For those of you whom we've had the pleasure of having in our showroom, the revamped showroom will be a bit of a shock and for those that are considering a Garage door purchase come on in to see all the latest styles and colours.

With 15 full size doors in multiple colours and styles on display, we are proud to be able to show many different options and combinations. Our Garage Door Opener room offers the ability to view the operators in action as well as the various options.

Come visit us in Downtown Elsinore, Ontario to see what we've done and as always Sprocket and Keyway are here to greet you as you arrive!

At your Service!
7182 Highway 21,
Downtown Elsinore
519.934.3450
peninsulaoverheaddoors.com



LOCKWOOD PAINTING

Expert pro painting contractor **Jeff Lockwood** and his team of seasoned pro painters have been providing professional priming, painting and staining services in the Owen Sound and area for over 10 years now. **Lockwood Painting** also offers a number of other decorating services including paper hanging, wallpaper removal, white-washing, small drywall repair, onsite airless spraying and a meticulous staircase and wood finishing service.

They are very proud to have been voted the Owen Sound Sun-Times "Best of the Best" Platinum Award winner for the area's "Best Painting Company", two years running – 2018 and 2019. Lockwood Painting continues to service a large residential-repeat client base as well as a number of custom home builders, renovators, local businesses and seniors' apartments located from Owen Sound to Kincardine.

Lockwood Painting is fully insured with \$2 million liability and insures its employees with the Ontario Workplace Safety Insurance Board. Lockwood is also a proud member of the Grey Bruce Home Builders & Trades Association and the Canadian Federation of Independent Business.

Our pro painters are always ready to help you with all your painting needs
For more information contact Jeff Lockwood Painting Services at 519.372.3008 or visit our website at lockwoodpainting.ca
(Please see ad on pg 71)



WESTERN ONTARIO WHIRLPOOLS – NOW SERVING GREY/BRUCE & MORE!!!

After 33 years of operation in the Greater Hamilton/Niagara area, **Western Ontario Whirlpools** has relocated to the beautiful West Grey area. The company was incorporated in 1986 and is operated by Brian and Jennifer Lang (nee Morrison). When first established, our specialty was manufacturing custom whirlpools for the major home builders. Over the years, we expanded to a mobile service company and our new customer base included major new home builders, renovation companies, home owners, hospitals, hotels, insurance restorators, and realtors/home inspectors (house closings).

Acrylic Repair Specialist:
Tubs & showers – repair chips, cracks, holes, burns, gouges and scratches. Repairs are virtually invisible and colour matched.

Whirlpool & Air Tub Repairs:
Repair/replace broken or leaky jets, piping, pumps, blowers, push buttons and electronics. Huge stock of parts to repair nearly any make and model.

Shower Door Repairs:
Repair/adjust existing shower doors.

Western Ontario Whirlpools has been a long-time authorized warranty service company for the major Canadian bathroom product suppliers (Maax, Mirolin, Neptune, Jacuzzi, American Standard, Kohler and Bain Ultra). Please call or email for further information. Text or email photos for quotations.

Contact Brian Lang
wowbjlang@gmail.com
O: 226.432.2108
C: 905.979.5470 | Durham
(Please see ad on pg 33)



MCMILLEN ELECTRIC AND COMPLETE HOME INSPECTIONS

McMillen Electric and Complete Home Inspections is locally owned and operated, and committed to serving Grey and Bruce counties. We work hard to provide quality work at reasonable rates, and take pride in each job that we complete. Customer satisfaction is a top priority!

Whether you need electrical services for new construction projects, renovations, or repairs, we are here to meet your residential and commercial needs. Some of our services include: • Electrical installation for new construction • Panel and service upgrades • House rewires (replacement of knob & tube wiring, ungrounded wire) • Surge protection • Installation of fixtures, wiring devices, recessed and low voltage lighting, in-floor heat, baseboards, hot tubs, security and landscape lighting • Generator installations (standby, or portable plug-in) • Smoke detectors and strobe lights.

McMillen's also provides professional home inspection services to help customers make informed decisions when buying or selling a home. We apply knowledge and skill to visually inspect possible defects and examine the overall conditions of your home using a simple and easy to understand written report (including photos, illustrations, and recommendations).

We look forward to meeting your electrical and home inspection needs!
519.378.4909
info@mcmillenelectric.ca
mcmillenelectric.ca
(Please see ad on pg 97)

Continued on page 98

Selling Real Estate in the Beaver Valley

with global reach through Christie's International Real Estate.

ReadHilton.com — Click for Gail's MOVIES

READ HILTON & GAIL CRAWFORD

SALES REPRESENTATIVES

CHESTNUT PARK
REAL ESTATE LIMITED, BROKERAGE
CHRISTIE'S
INTERNATIONAL REAL ESTATE

Direct: 519 986 4545
Read@ReadHilton.com
Gail@GailCrawford.com

CHESTNUT PARK REAL ESTATE LIMITED, BROKERAGE
393 FIRST STREET, SUITE 100 COLLINGWOOD ONTARIO

THIS IS NOT INTENDED TO SOLICIT BUYERS OR SELLERS UNDER CONTRACT WITH A BROKERAGE

PRATT

PLUMBING AND HEATING

AIR CONDITIONING • WATER SYSTEMS • FIREPLACES

519-369-3411

We pride ourselves on offering the highest value on all the products we service & install.

SUBSCRIBE

4 ISSUES PER YEAR
\$26⁵⁵ + HST
1-YEAR RATE PER REGION
*US subscribers add \$10.00 CDN
*Foreign subscribers add \$30.00 CDN

Now receive OUR HOMES premium local magazines directly in your mailbox!

OUR HOMES publishes 14 regional magazines quarterly. View them all online at ourhomes.ca!

CHOOSE YOUR REGION(S) & SUBSCRIBE TODAY:
subscribe@ourhomes.ca | 705.445.5065 x200

STYLE • COMFORT • IDEAS • REAL ESTATE

ourhomes

celebrating life at home

And so the adventure begins...
interior concepts designed & delivered

blendedinteriors.houzz
Blended Interiors
@blendedinteriors
519 270 6799
blendedinteriors@gmail.com

Delivering Innovative Solutions in Wood

Mantels | Cabinets | Wall Units
Audio Visual Systems | Storage Units
Home Office Workstations | Murphy Beds
Kitchen Renos | Stone/Tile Backsplashes

THE WOODWORM

317542 Hwy 6 & 10, Owen Sound
519-376-6323 | 416-525-7814
www.thewoodworm.com

SERVING ONTARIO FOR 55+ YEARS

Smith Water Systems

a division of SD Smith Drilling Co. Ltd.

- Wells
- Treatment Equipment
- Pumps
- Licensed by MOE
- Member of OGWA

PROMPT PROFESSIONAL SERVICE

519-986-4743 • smithwatersystems.ca

Offering quality workmanship in Owen Sound & surrounding Grey & Bruce Counties

MCMILLEN ELECTRIC

+ Complete Home Inspections

New construction project, renovations, or repairs? We are here to meet all of your residential and commercial electrical needs. Professional home inspection services also available.

519.378.4909

McMILLEN ELECTRIC.CA

Winner of the Chamber of Commerce "Skilled Trades Excellence Award" 2017 and 2018.



SMITH STONE – PURE SOPHISTICATION

Shouldice Designer Stone is very pleased to add **Smith Stone** to its Residential Stone lineup. Smith Stone is the perfect synthesis of tradition and modernity.

Stone is popular because of its reputation for strength, stability and longevity. But today's consumers are looking for something more. They are also interested in the appeal of fashionable, contemporary design.

Smith Stone delivers on all counts. Its modestly rugged profile fulfills the traditional values of stone without question. This has been blended with the contemporary appeal of clean, horizontal lines randomly, yet tastefully, broken with variable lengths and heights.

Available in the fresh Polar and Oxenden colours, the result is a stunning new look, totally appropriate for a vast range of applications. Smith Stone is a great choice for new builds, retrofits or as an accent to brick, other stone types and is a fantastic counterpoint to glass or metal building products.

You can count on the Shouldice experience of over 70 years and a commitment to Innovation, Quality and Service to bring you only the very best in stone and brick design. Smith Stone is just the latest contribution to that reputation. **For more about Smith Stone visit shouldice.ca or call us at 800.265.3174**

(Please see ad on pg 2)

TRULINE DESIGN

At **TruLine Design**, we believe that dreams do become reality. Your dream becomes our dream, your project, our project. Whether your project is an addition to your existing structure, or a brand new build, we are committed to being with you every step of the way. From concept idea to the final construction and beyond, our goal is to build an ongoing relationship with our clients to further assist them however we can.

With over 40 years of experience in the construction industry, we bring extensive and in-depth knowledge of our craft and a dedication to excellence that drives us to be the best. In our design process, our focus is to work closely with you, the client, throughout the design phase and tailor your build to suit your dream, your vision, and your needs. We offer every possible solution to help you achieve your goal.

At TruLine Design we understand that the design and building phase has many options and variables, and at times can be confusing, therefore we offer a variety of services from consultation services, preliminary designs, complete drafting sets and project management, to make your project and the process as stress-free and enjoyable as possible.

To learn more about us, or to schedule a consultation, please contact:
Jason Steiner
Branch Manager/Designer
O: 226.841.0138
C: 519.357.0345
info@trulinedesign.com
trulinedesign.com
(Please see ad on pg 6)

DESBORO DOORS

At **Desboro Doors**, we build the **door to your dream home**, whether that home is an historic farmhouse, a new custom home, or anything in between. We build feature doors for your restaurant or commercial building as well.

We are experienced door builders and have crafted and installed many grand entrance doors for large custom homes throughout Ontario. Features may include fine finishes, arched details, complex carvings, decorative glass and custom metalwork. Regardless of how grand or simple the door is, through our many years of experience and advancements in solid wood door construction and finishing, we have developed unique features that create the **most durable wood exterior doors possible**. We use the same level of craftsmanship for the wide variety of interior doors we supply, from the clean look of paint grade shaker doors, to the statement of a unique feature barn door.

We pride ourselves in developing custom solutions for your unique door needs and wants. So, bring us your unique door challenges and we will develop a solution, or browse our website and contact us for ideas.

desborodoors.com
info@desborodoors.com
519.363.5635
135830 Concession 8, Desboro
(Please see ad on pg 93)

THE SCUFF-X® ADVANTAGE

- Proprietary scuff-resistant formula
- Withstands repeated washing
- No mixing, measuring, or limited pot-life
- Provides an easy application and improves touch-ups
- Low-VOC
- Qualifies for LEED® v4 credit and CHPS low emitting credit
- Available in thousands of colours
- Anti-microbial additives inhibit the growth of mould and mildew on the surface of the paint film

HOSPITALITY ESTABLISHMENTS: In an industry defined by exceptional customer service, extended downtimes due to painting and constant touch-ups are not an option. With its quick dry time, SCUFF-X allows high-traffic areas to be painted and rapidly returned to service with minimal disruption.

HEALTHCARE FACILITIES: For environments in which patient health is of primary concern, maintaining clean, unsoiled walls is key. SCUFF-X resists scuffing and staining, and the proprietary formula contains antimicrobial additives to inhibit the growth of mould and mildew.

CORPORATE SPACES: Time is money, and repeatedly maintaining corporate conference rooms, offices, lobbies and hallways can be both costly and time-consuming. Fast-drying SCUFF-X can be applied in occupied spaces that can be quickly returned to service for minimal disruption to business.

RETAIL ENVIRONMENTS: Protect walls from unsightly scuffing caused by racks, carts and hangers with SCUFF-X, the high-performance coating that resists scuffs and stains caused by everyday people traffic.

cuneointeriors.com
800.265.1172
(Please see ads on pg 7, 101)

STAIRWORKS

Established in 1981, **Stairworks** is a family owned and operated manufacturer of custom stair and railing designs.

Located in Guelph, Ontario, we take pride in fostering our reputation for providing: Innovative design • Seamless installations • Exceptional customer service from beginning to end • Quick lead times and • Economic value.

Our products are manufactured using the highest grade materials available. The majority of our stair and railing components are made from solid wood, giving every final piece both an aesthetic advantage and structural advantage. Our stock woods include four core species: Pine, Maple, Red Oak, and Poplar (for painting). These materials are sourced from environmentally managed forests in North America. Exotic woods can be imported to accommodate special requests.

Since 1981 our team has developed longstanding customer relationships based on trust, reliability, accountability, and experience. Our company takes great pride in providing quality craftsmanship and exceptional service; our customers are set in the highest regard, their satisfaction is priority one.

If you are looking for a change to an existing staircase or are building a new home, contact us today by phone, email, or stop into our showroom to enhance your home with a stunning staircase.

519.823.1921
info@stairworks.ca
8-295 Southgate Dr, Guelph
stairworks.ca
(Please see ad on pg 33)

WALKERTON & DISTRICT OPTIMIST CLUB – HOLIDAY HOUR TOUR

The **Walkerton & District Optimist Club** has been actively involved in the growth of the Walkerton community since 2010. Our motto is friend of youth. Currently we have 35+ energetic members who work together to bring great projects to life. We are always welcoming new inquiries for members, and men and ladies make up our team.

2019 will be our **7th Annual Christmas House Tour**. While you enjoy the beauty of the season touring 6 Christmas homes, please know your admission fee is helping us build a new accessible playground at the Walkerton Arena.

The past 6 years of this wonderful event have allowed us to donate much needed funds, \$25,000 in total, to our local soccer fields, the Splash Pad at the centennial pool park, the new CT Scan and now our dream of an accessible park is coming to life. Besides our annual Christmas Home Tour our club does a major fundraiser in the spring Optimistic View live! Raising funds for local families of children with childhood illnesses. Plus we host kid friendly events...Halloween Bash, Breakfast With Santa and our Easter Bazaar to name a few.

Please feel free to follow us on Facebook and Instagram. Or contact us walkertondistrictoptimistclub@hotmail.com
(Please see ad on pg 14)

SMITH WATER SYSTEMS

Simon Smith of Smith Water Systems has been providing Ontarians with well water for over 55 years! Recently retired from well drilling, Simon purchased McCann Water Systems of Markdale to stay active in the business he's passionate about. With an established office in Erin, Ontario for 19 years, this is the second location for Smith Water Systems, a family owned and operated business.

From our Beaver Valley location we serve southern Georgian Bay and the Bruce Peninsula.

Simon, his wife Patty, and technician Bob Manzer provide sales, service, and installation of well pumps, sump pumps, yard hydrants, and a wide range of water treatment modalities such as softeners, iron removers, UV light sterilization, reverse osmosis systems, and sediment filters.

We're licensed to work on all types of wells. Our well services include well upgrades to meet MOE reg 903, well rehabilitation, well yield testing, in addition to chlorination, decommissioning, and jetting wells. We offer solutions for low yielding wells, with custom in-house storage cisterns.

We value your business, and have made it our mission to provide reliable products along with prompt, professional service. To discuss your water system needs, please give us a call.
519.986.4743
smithwatersystems.ca
(Please see ad on pg 97)

THE OLD BARN POLISHED STONE CREATIONS

Located on the Mulock Road between Durham and Hanover, **The Old Barn Polished Stone Creations** is your local granite, marble, soapstone, and quartz fabricator. We stock full granite slabs at the shop, as well as quartz samples from many different companies such as: Caesarstone, Hanstone, Silestone, MSI, and more.

Our staff work with you to ensure your project, big or small, is exactly what you've envisioned. Whether you are looking for an exotic stone to make a bold statement or a neutral colour to blend in, we have it all.

Do you have an existing stone surface that needs to be modified? We can do that as well! Template to install, The Old Barn does it all.

We also have a large selection of remnant pieces, perfect for your vanity, tub surround, outdoor space, tabletop, or small kitchen.

Come and visit our shop and showroom, we might have just what you're looking for! Our Hours are Monday to Friday 9am to 5pm, Saturdays by appointment only.

Check out our Facebook page and Instagram!
173480 Mulock Rd, Hanover
519.369.1710
info@theoldbarngranite.ca
(Please see ads on pg 11, 43)



IMAGE: CRAFT FLOORS
Showcasing CRAFT's Kawartha (Hickory)
Engineered Hardwood Flooring
CRAFT Hickory is warranted for use over
Radiant Heat.

into the WOODS

STORY **TAMARISK MCNALT STEPHENS**

There's no doubt that integrating the timeless beauty of natural wood adds character, warmth and value to your home. Here's a review of several species to help determine what selection may be right for you. Remember, as a conscious consumer, select FSC (Forest Stewardship Council) certified wood to ensure that it has been sourced in an environmentally responsible manner.



IMAGE: CRAFT FLOORS
Showcasing CRAFT's Brevik (White Oak)
Engineered Hardwood Flooring

HICKORY

A very hard wood that offers a distinctive character due to bold graining (which is best showcased in wide floorboards), but also requires added care during installation to achieve a cohesive aesthetic, especially in large open-concept spaces. Take note that most hickory flooring (including engineered products) cannot be installed over radiant floor heat.



MAPLE

Its subtle grain pattern provides a consistent look and when combined with its strength and durability, it can perform well in applications like cabinetry, flooring and furniture. However, maple is notoriously difficult to stain (proper procedures must be followed to avoid blotchiness) so prefinished from the factory is the best option when selecting maple hardwood. If you're looking for a solid wood cabinet instead of MDF or HDF (medium- or high-density fibreboard), maple is a great choice. Birdseye maple has a distinct pattern found in some sugar maples and makes a beautiful statement for custom furniture pieces.

OAK

A common option for flooring as it is incredibly durable, stable (when it comes to moisture and humidity) and offers a dynamic grain pattern that can hide imperfections such as scratches and dents more than other species. Red oak is more affordable than white oak, although there is a rosy undertone that the name implies. Oak generally receives stain well.

Continued on page 102



Floors for Life.

**CARPET • HARDWOOD • LAMINATE • CERAMIC TILES • AREA RUGS
DRAPES 'N BLINDS • SHUTTERS • LUXURY VINYL TILE & PLANK**

Celebrating 71 Years

Cuneo's
CARPET ONE FLOOR & HOME
Decorating Excellence Since 1948

873 10th St., Hanover, ON
207 Durham St., Walkerton, ON

www.cuneointeriorscarpetonehanover.com
800-265-1172

design ideas



PINE

An affordable, lightweight softwood that is not the best for floors as it can scratch and dent easily (although heartwood is harder and more durable). Generally suited for a rustic aesthetic due to the dark knot, though clear pine comes without knots. Although pine takes paint well, you'll want to seal the knots so they don't bleed through. Great for wood trim.



WALNUT

A more costly wood, walnut has a distinct aesthetic with tones that can vary from dark chocolate brown to a lighter butter brown. Although strong and stable, walnut does scratch and dent more easily than hickory, oak or maple. Clear-coating or oiling walnut is the preferred finish to highlight its natural beauty. Great for statement pieces.



CEDAR

Western red cedar or eastern white cedar is a fragrant wood most suitable for exterior applications because of its ability to resist moisture (think cedar shakes), decay and insects. Exterior soffits and interior wood ceilings with tongue-and-groove cedar add warmth. You'll often see clear cedar as smooth ceiling details in modern builds.



ASH

A hardwood that has a lively graining similar to oak. It is naturally pale in colour. Even with its strength and density, ash is relatively lightweight compared to other hardwoods like hickory and oak.



POPLAR

Generally painted as it's not necessarily the most attractive wood. If you're looking to avoid the use of synthetics and MDF materials, paint-grade poplar is a great solution for interior trim, mouldings and doors.



BIRCH

Similar to maple in appearance, although not as hard. Can have a unique flame appearance when cut on the saw in a certain way. Sometimes used in engineered hardwoods to achieve an aesthetic similar to maple, but at a more affordable price tag. But remember, it is not as hard or durable as maple.

CHERRY

A beautiful and expensive hardwood with a fine straight grain and a rosy hue that reddens with age. Often used in cabinetry and furniture.

RECLAIMED WOODS

These offer a great way to reuse materials and prevent more trees from being harvested, while providing a unique, timeworn aesthetic with a sense of character and history. Reclaimed wood is often denser and more stable due to being harvested decades ago from mature trees that were able to reach a larger size, which can be beneficial for flooring as wider plank sizes are available.

EXOTIC WOODS

As the name implies, these woods are generally imported from international locations. One fairly expensive option is zebra wood, which is harvested from central Africa and offers a distinct striped-grain pattern from pale yellow to dark brown. Another exotic wood is acacia, which is a fast-growing and affordable import often used in furniture.

ENGINEERED VS. SOLID WOOD FLOORING:

Although cost is generally comparable, solid hardwood can be sanded down and refinished whereas the thickness of the wood veneer on engineered products will dictate whether or not it can be refinished. Engineered hardwoods are more stable and less susceptible to contraction and expansion with changes in humidity compared to a solid product. This also allows more engineered products to be available in wider plank sizes than solid hardwood.

TIP: When selecting a flooring material, consider thickness and the transition to other flooring materials (such as tile). For example, a half-inch engineered product may require an underlay so that you have a level transition from one material to the next, while a solid three-quarter-inch wood may not require an underlay to match height with adjoining flooring. **OH**

Wood samples courtesy of Arboreal Tree Care

Bring the natural beauty OF THE GREAT OUTDOORS INTO YOUR HOME.



**COUNTRY
CHARM**
mennonite furniture

VISIT OUR SHOWROOMS IN OWEN SOUND AND MISSISSAUGA

WWW.CCHARM.COM 1-877-570-0933

IMAGE: NELSON COSTA – AYA KITCHENS AND BATHS
Showcasing AyA's Manhattan Rye Cherry door paired with
their Broadway White High Gloss door.

directory

OUR HOMES attracts the area’s finest businesses to advertise in our pages, and utilize our unparalleled distribution and coffee-table appeal to market their products and services. We’re making it easier for you, our readers, to become educated as you plan your home- and real estate-related purchasing decisions. View these business ads online at ourhomes.ca/greybruce. The listings below are organized alphabetically by industry.

ALTERNATIVE ENERGY

Blackline Power, 19

APPLIANCES

Square Deal Neil’s TV & Appliances, 9

ARCHITECTS/ARCHITECTURAL DESIGN/
ARCHITECTURAL TECHNOLOGISTS/
DRAFTSMEN & DESIGN

TruLine Design, 6, 98

BUILDERS

Alair Homes, 47
AND-ROD Construction Ltd., 5
Blackland Construction Ltd., 23
Candue Homes, 10
Dennison Homes, 45
Great Lakes Custom Homes, 107
High R Construction, 71
Hill Build, 56&57
The Great Lakes Frame Company, 91
Valley Home Improvements, 63
Warton Home Building Centre, 79

BUILDING/LANDSCAPE SUPPLIES

Centre Grey Building Supplies, 83
Flesherton/Markdale Home Hardware, 83
Miller’s Home Hardware Building Centre, 49
Moggie Valley Timber Inc., 71
Port Elgin Home Building Centre, 31
Warton Home Building Centre, 79

CABINETS & MILLWORK/
CARPENTRY/FINE WOODWORKING/
CUSTOM FURNITURE

Bruce County Custom Cabinets, 45
The Woodworm, 97
Topnotch Furniture, 109

COMPUTER/INTERNET/
TELECOMMUNICATIONS

Bruce Telecom, 12

COUNTERTOPS

Di Pietra Design, 4
Elegant Solutions/Cambria, 17
The Old Barn, 11, 43, 99

DRYWALL/PLASTER/STUCCO

Meg’s Drywall, 23

ELECTRICAL

Grey Northern Powerline Inc., 93
McMillen Electric & Complete
Home Inspection, 96, 97

EXCAVATING/SITE PREP/SEPTIC

Mac Taylor Corporation, 71

EXTERIOR FINISHES/IMPROVEMENTS

Van Dolder’s Custom Exteriors, 112

FARM SUPPLIES & MACHINERY

Frontier Sales and Equipment, 83
MSD Inc., 93
Stoltz Sales & Service, 79

FENCING/DECKS/GATES

Built Wright Fencing, 67
MSD Inc., 93
Postech Grey Bruce, 63

FINANCIAL/INSURANCE/
MORTGAGE/INVESTING

CMR Insurance, 25

FIREPLACES & STOVES/ACCESSORIES

Air Tech Mechanical, 10
Chantico Fireplace Gallery, 95
Pratt Plumbing and Heating, 97
South-Port Mechanical Geothermal, 59
The Fyre Place & Patio Shop, 9, 49

FLOORING

Cuneo Interiors Ltd., 7, 98, 101
Moggie Valley Timber Inc., 71

FOOD & DRINK/RESTAURANTS/
CATERING/DELI

Top of the Rock, 83

FOUNDATIONS

Postech Grey Bruce, 63

FURNITURE & HOME DECOR/
ACCENTS/GIFTS/COLLECTIBLES

Country Charm Mennonite Furniture, 103
Grey Bruce Paint & Décor, 107
Home Decor & More, 23
House Rules Design Shop, 67
Inside Ideas, 33
Smitty’s Fine Furniture, 111
The Fyre Place & Patio Shop, 9, 49
The Rusty Star, 25
Topnotch Furniture, 109
Warton Home Building Centre, 79

GARDEN CENTRES/GREENHOUSES/
NURSERIES

Port Elgin Home Building Centre, 31

GEOTHERMAL

Sandy Hamilton Plumbing &
Heating Inc., 25
South-Port Mechanical Geothermal, 59

GREEN LIVING

Blackline Power, 19

HEATING & COOLING

Air Tech Mechanical, 10
Pratt Plumbing and Heating, 97
Sandy Hamilton Plumbing &
Heating Inc., 25
South-Port Mechanical Geothermal, 59

HOME IMPROVEMENTS/
RENOVATIONS

Great Lakes Custom Homes, 107
Home Hardware, 8
Valley Home Improvements, 63

HOME INSPECTION

McMillen Electric & Complete
Home Inspection, 96, 97

INSULATION

High R Construction, 71

INTERIOR DESIGN/HOME STAGING

Blended Interiors, 97
Cuneo Interiors Ltd., 7, 98, 101
Home Town Design, 25
House Rules Design Shop, 67
K-Interiors, 45

KITCHEN & BATH

Bruce County Custom Cabinets, 45
House Rules Design Shop, 67
Warton Home Building Centre, 79

LANDSCAPE DESIGN &
ARCHITECTURE/LANDSCAPING/
LAWN & GARDEN

Hutten & Co. Land and Shore, 3
Peninsula Out of Doors, 27
Rock Solid Landscapes, 29

ORGANIZATION/STORAGE

Blended Interiors, 97
Wilson Solutions, 81

OUTDOOR FURNITURE/STRUCTURES

MSD Inc., 93

PAINTING & DECORATING

Benjamin Moore, 7
Cuneo Interiors Ltd., 7, 98, 101
Dulux Paints Owen Sound, 47
Grey Bruce Paint & Décor, 107
Home Hardware, 8
House Rules Design Shop, 67
Inside Ideas, 33
Lockwood Painting, 71, 96
Martin’s Home Hardware, 7

PAINTING, PRIMING, BLASTING
& STAINING

Custom Soda Prep & Paint, 15
Paint & Woodcare Co., 15
Premier Industrial Painting, 12
TNT Dry Ice Blasting, 15

PLUMBING

Pratt Plumbing and Heating, 97
Sandy Hamilton Plumbing &
Heating Inc., 25
Smith Water Systems, 97, 99

POOLS/HOT TUBS/SAUNAS/SPAS

The Water Store, 33
Western Ontario Whirlpools, 33, 96

REAL ESTATE

Chestnut Park, 13
Chestnut Park – Read Hilton, 97
Royal LePage RCR Realty –
Scott Crowther, 53

SPECIAL EVENTS

Walkerton Christmas Home Tour –
Walkerton & District Optimist Club, 14, 99

STAIRS/RAILINGS

Stairworks, 33, 99

STONE PRODUCTS/VENEER

Shouldice Designer Stone, 2, 98
West Shore Stone & Brick Inc., 52

TILE

Di Pietra Design, 4

WATER TREATMENT/FILTRATION

Smith Water Systems, 97, 99
The Water Store, 33

WELDING/FABRICATION

Stairworks, 33, 99

WINDOW TREATMENTS

Budget Blinds of Owen Sound, 23
Cuneo Interiors Ltd., 7, 98, 101
Inside Ideas, 33

WINDOWS & DOORS

Desboro Doors, 93, 98
Peninsula Overhead Doors, 96
Van Dolder’s Custom Exteriors, 112

OUR inspiration becomes **YOUR** reality

Home Tours, Style Ideas, Recipes & DIYs

Follow OUR HOMES on Pinterest, Facebook and Instagram for the latest updates.

celebrating life at home

ourhomes.ca

DINING *By* DESIGN

STORY **REBECCA HAY**
PHOTOGRAPHY **STEPHANI BUCHMAN**



5 STEPS TO CREATING A FABULOUS DINING SPACE

Cooler temperatures bring warmer gatherings as we all move indoors to entertain. That also means it's time to show off your home. No more backyard barbecues here. It's finally time to highlight your culinary skills or cocktail-making and impress your guests with a dining room design that feels both elegant and comfortable. Here are my five non-negotiable design elements for creating a fabulous dining space.

1 COLOUR & MOOD
Think about the mood you wish to evoke. A bright room with fresh white walls and lots of natural light will make you feel awake and alive. This is great for brunches and luncheons. For a more intimate vibe, choose richer colours and warm lighting. I love to use wallpaper and grasscloth in dining rooms. It adds a luxurious touch and can even act as a great conversation starter among guests while you slip away to prepare the meal.

2 FURNITURE LAYOUT
Function is foremost to dining room design. If your table is too big, the chairs may bump up against the wall, or if there are too many large furniture items, guests may knock over a lamp (or each other). A general rule of thumb is to keep a minimum of 36 inches between the edge of the table and the wall for chairs. This gives chairs just enough space to pull out so that your guest can slide in. More than 36 inches is even better. *Continued on page 108*

Great Lakes Custom Homes & Renovations



We build excitement!
Your Premier Custom Home Builder in Grey Bruce
Robert Abbott, Owner
186 Lakeshore Rd., East of the Blue Mountains | 705.446.4831 | greatlakescustomhomes.ca





GREY BRUCE
paint & décor

furniture, art work, & home accessories
complimentary in-store design consultants
spray-paint refinishing for cabinets etc.

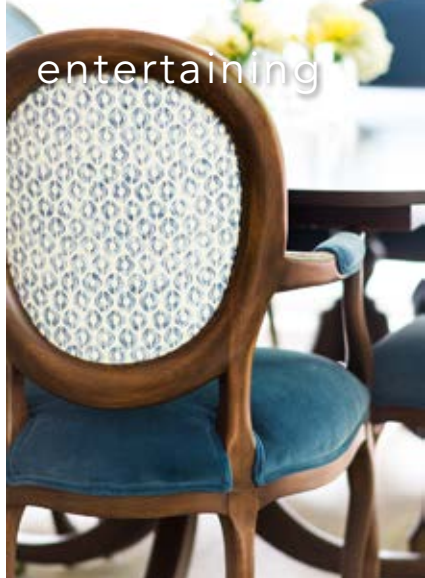
Benjamin Moore

1580 20th Street East
Owen Sound 519 371 4207
GreyBrucePaint.com





entertaining



3 SEATING SELECTION

You'll want to consider what type of seating suits your needs. Some families prefer a bench or banquette seating. This works great for children but not as well for adult dinner parties. No one wants to be the guest stuck in the centre of the bench. It's like having a middle seat on an airplane and the lady at the window continually has to squeeze by you to use the washroom. Banquettes do, however, work really well when you are tight for space. The 36-inch rule no longer applies when you have bench seating. Just make sure that your table has a pedestal base instead of four legs so people can get in and out easily.

4 SIZE MATTERS

The size of your table is important. It's not just about what fits in the room (although this is important too). Select a table that accommodates how you like to serve and dine with guests. You want it to have enough space for plates and décor or family-style platters in the middle, but one that still encourages great conversation across the table. Never go smaller than 36 inches wide. In general, tables 42 to 48 inches wide are most common. Anything bigger is difficult for conversation. The shape of the table can also affect your dining experience. You've seen this at restaurants. A round table is great for including everyone, but if it fits more than eight people (think of a wedding), it's too big and you get stuck talking solely to your neighbour all night. Round tables are great for smaller spaces. They lend themselves well to a space that also acts as a thoroughfare since there are no sharp corners to impede the flow of traffic.



No dinner table is properly set without candles, but use unscented so you don't compete with food aromas.



5 LIGHT IT UP

Lighting is the last main factor and perhaps the most important one if you're looking to create a space that keeps everyone wanting to get invited back. Use layers of light. Always add a dimmer to this room and use pot lights for great general lighting while you set the table, but turn them off when guests arrive and use a beautiful chandelier coupled with a pair of lamps on a sideboard or wall sconces for ambience. Chandeliers should hang approximately 29 inches above the table but this, of course, depends on your ceiling height. You can hang a light higher if your ceilings are extra tall.



BONUS DESIGN ELEMENT: If you have a little more space, consider a sideboard or a bar cart. Bar carts are fun to look at and you can set them up as an extra area for guests to serve themselves. The vintage bar cart in my own home sees a lot of action and sparks many conversations.

By considering mood, layout, table size, seating and lighting, you'll have covered all the bases to designing a beautiful and functional dining room. When you've found the perfect dining design, don't forget to add in some additional table decorations, candles and glassware. **OH**

Topnotch furniture

manufacturers of fine furniture

Over 18 years of professional design and manufacturing.



Custom Solid Wood Furniture

89446 Fordwich Line, 1 km North of Hwy 87, Gorrie

519.335.3213 topnotchfurniture.com  



finishing touch

IN THE LIVING ROOM

TEMPAPER: Intersections Wallpaper in Urban Bronze

CB2: Halo Copper Velvet Armchair

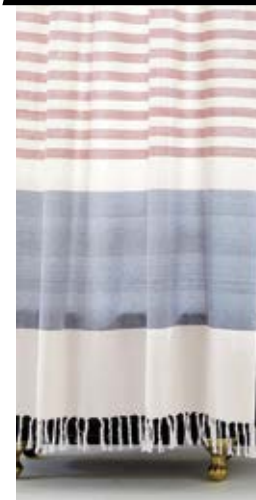
ORIGINAL BTC: Chester Floor Light in Satin Copper

COVET HOUSE: Eden Center Table in Copper Finish



SURYA: Crescent Pillow in Medium Gray and Black with Metallic Copper

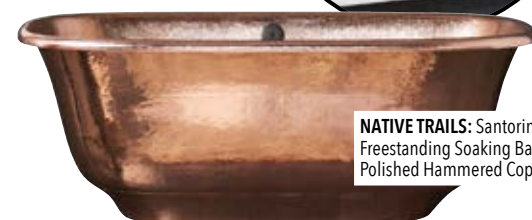
IN THE BATHROOM



CB2: Karla Copper Shower Curtain

NATIVE TRAILS: Maestro Round Vessel Sink in Polished Hammered Copper

NATIVE TRAILS: Farmhouse 30 Apron-Front Kitchen Sink in Polished Hammered Copper



NATIVE TRAILS: Santorini Freestanding Soaking Bathtub in Polished Hammered Copper



POTTERY BARN: Copper Handled Flatware

DEKTON CANADA: Surface Material in Trilium from the Industrial Collection

FOR THE BAR

CB2: Acrylic Tray Table

POTTERY BARN: Copper Cocktail Shaker



NATIVE TRAILS: Mojito Bar & Prep Sink in Polished Hammered Copper

IN THE KITCHEN

ORIGINAL BTC: Stanley Pendant Light in Hammered Copper

NATIVE TRAILS: Tempered Copper Lazy Susan



CRAFTMASTER FURNITURE

Smitty's
FINE
FURNITURE

70
Years

For the LOVE of
CANADIAN
FURNITURE

Hanover Showroom 170 3rd Street 519-364-3800

Hours: M-F 10am-6pm Sat 9am-5pm Sun 11am-5pm

Kitchener Showroom 170 Gateway Park Drive 519-658-9313

Hours: M-W 10am-6pm T-F 10am-8pm Sat 10am-6pm Sun 11am-5pm

smittysfinefurniture.com

Want to know what's new in windows and doors?

ASK THE HOME TEAM



ARMOR
WINDOWS & DOORS



**VISIT OUR VILLAGE-STYLE
SHOWROOMS:**

**1624-28th Ave East, Owen Sound
1-519-376-1624**

**185 Mountain Road, Collingwood
1-705-444-5601**

vandolders.com