

FALL/HOLIDAY 2015

STYLE ■ COMFORT ■ IDEAS ■ REAL ESTATE

ourhomes

L O N D O N A N D M I D D L E S E X C O U N T Y

upping the amp IN
OLD SOUTH

EYE-POPPING
PICKS FOR
kitchen & bath

COUNTRYSIDE
CASUAL

EASY
TARTE TATIN

FUNKY, FUNCTIONAL
KIDS' ROOMS



LOVE
EVERY
INCH OF
YOUR HOME.



BEFORE

“OUR GOAL IS TO EXCEED YOUR EXPECTATIONS WITH REMARKABLE CUSTOMER SERVICE, COMPETITIVE PRICING AND EXCELLENT WORKMANSHIP FROM CONCEPT TO COMPLETION”

Meet the team and experience the DUO Difference today

DESIGN + BUILD RENOVATIONS

WHOLE HOME	BATHROOMS
ADDITIONS	BASEMENTS
EXTERIORS	MEDICAL OFFICES
KITCHENS	COMMERCIAL

DUO
BUILDING^{Ltd}
duobuilding.com
(519) 434-0960



THE PLUMBER



The
Kitchen & Bath

You've Always Desired.

Retail & Builder's Showroom Open to Serve Southwestern Ontario

Come in & see your new bathroom or go to patontheplumber.ca to view our photos or get linked up with the full lines from the world's finest manufacturers.

Whether it's your new home or existing home, we have everything available to fulfill your plumbing needs.

London
679 Sovereign Road
London, ON
N5V 4K8
519.455.4910

Waterloo
169 Lexington Court, Unit E
Waterloo, ON
N2J 4R4
519.885.2140



NEW! Environmentally safe dry ice blasting
for removing old coatings from interior and exterior wood.

Log home maintenance | Deck refinishing
Brick cleaning and sealing | Interior and exterior painting
Hot water and steam cleaning for dirt and mildew.
Removing efflorescence from brick and masonry.



104 Shane St., Unit 2B
Springmount Industrial Park
Owen Sound
Call for Free Estimates
519-378-3590
www.customsoda.ca
ecostore@customsoda.ca



Advertise in
our **Spring**
Issue & get
noticed!

Give YOUR BUSINESS the benefit of
premium exposure to our
extensive targeted readership!

ADVERTISING INQUIRIES & SALES, PLEASE CONTACT:

Sylvie Roth • 519.851.1041
sylvie.roth@ourhomes.ca

Rick Lennon • 519.636.9514
rick.lennon@ourhomes.ca

STYLE • COMFORT • IDEAS • REAL ESTATE
ourhomes
LONDON AND MIDDLESEX COUNTY

STYLE • COMFORT • IDEAS • REAL ESTATE
ourhomes
LONDON AND MIDDLESEX COUNTY

REGIONAL PUBLISHER Jamie Jefferson
jamie.jefferson@ourhomes.ca
Georgette McCulloch
georgette.mcculloch@ourhomes.ca

REGIONAL MANAGING EDITOR Mary Hatt
mary.hatt@ourhomes.ca

REGIONAL PRODUCTION MANAGER Julia Dempsey
julia.dempsey@ourhomes.ca

MARKETING & ADVERTISING Sylvie Roth, 519.851.1041
sylvie.roth@ourhomes.ca

Rick Lennon, 519.636.9514
rick.lennon@ourhomes.ca

OUR HOMES is a registered trademark of OUR HOMES MEDIA GROUP INC.
OUR HOMES London and Middlesex County is published four times a year.

OUR HOMES is distributed to residents of London and Middlesex County via direct mail.
Copies of OUR HOMES are available for free pick up at high traffic locations throughout the
region. OUR HOMES is distributed to select business leaders via direct mail.

Please send all letters and/or feedback to OUR HOMES Magazine,
279 Ste. Marie St., Collingwood, ON Canada L9Y 3K6. Or email us at editor@ourhomes.ca.
All letters received are subject to editing for grammar and length.

OUR HOMES MEDIA GROUP INC:

EDITORIAL

EDITOR-IN-CHIEF Georgette McCulloch
georgette.mcculloch@ourhomes.ca

ASSOCIATE & WEB EDITOR Laurel Fortin
laurel.fortin@ourhomes.ca

MANAGING EDITORS Nancy Belgue,
Adrienne Brown, Laurel Fortin,
Walter Franczyk, Mary Hatt, Sarah Hoy,
Gina Makkar, Tiffany Mayer,
Georgette McCulloch, Annette McLeod,
Melissa North, Jennifer Schleich,
Melody Wren

ART

ART DIRECTOR Tara Chattell
tara.chattell@ourhomes.ca

ASSOCIATE ART DIRECTORS
Sheila Britton, Georgie Donais

PRODUCTION

PRODUCTION DIRECTOR Lynn Derrick
lynn.derrick@ourhomes.ca

PRODUCTION MANAGERS
Julia Dempsey, Kelly Donaldson,
Marilyn Reid, Abby Reynolds,
Tracy Shuttleworth

OPERATIONS

MANAGING DIRECTOR, SALES & MARKETING
Jamie Jefferson
jamie.jefferson@ourhomes.ca

MANAGING DIRECTOR, OPERATIONS
Georgette McCulloch
georgette.mcculloch@ourhomes.ca

ACCOUNTING Donna Duggan
donna.duggan@ourhomes.ca

ADMINISTRATIVE ASSISTANT Lisa Merrell

CONTRIBUTORS

Brandon Barre, Pat Crocker, Jason Hartog, Mary Hatt, Gillian Jackson, Nicole Laidler,
Jackie Noble, Stephanie Redmond, Melanie Rekola, Yanic Simard, Tara West

Advertisements and the content, including photos, of advertisements published within OUR HOMES
magazine are supplied solely by the advertiser and neither the publisher nor OUR HOMES Media
Group Inc. accept responsibility for opinions expressed in advertisements or for copyright issues with
regards to photos, advertising copy and advertisements, nor shall they be held liable thereby. By act
of reading this publication, all advertisers and readers agree to indemnify and hold harmless both
OUR HOMES Media Group Inc., and the publisher thereby. Copyright ©2015 OUR HOMES Media
Group Inc. All rights reserved. Reproduction without permission is prohibited.

OUR HOMES CAN BE FOUND IN THE FOLLOWING MARKETS:

Barrie • Durham Region • Grey Bruce • Hamilton • London
• Mississauga • Muskoka • Niagara • Oakville/Burlington/Milton
• Ottawa • Peterborough • Southern Georgian Bay • Vaughan
• Region of Waterloo • Wellington County/Orangeville/Caledon • Windsor



PROUD
SUPPORTER
Nature Conservancy of Canada™

Refresh your kitchen...

BEFORE



AFTER



Benjamin Moore

Advance Paint from Benjamin Moore Oil that cleans with water!

WEST

HYDE PARK PAINT
1700 Hyde Park Rd.
London, ON
519.472.4100

SOUTH

LONDON DECORATING CENTRE
1009 Wonderland Rd. S.
(at Pine Valley Blvd.) London, ON
519.686.9929

NORTH

CLANCY'S RAINBOW
1030 Adelaide St. N.
London, ON
519.434.3201



STAGING PHOTO SHOOTS FOR OUR HOMES

London is a big part of my job. It's one of the best parts – working in some of London's most noteworthy homes alongside the owners and designers who created them. To be honest, these homes have it all: great design and style sensibility, not only architecturally but in terms of furnishings and accessories, as well. My goal is to bring it all to life and tell a bit of a story through the shoot, so to speak, by taking you inside the daily life of its rooms.

Our shoots often relate to the season they are published in, yet, for production reasons we have to work months or even longer ahead. This issue's Home and Builder feature was actually shot on a hot, hot day in early September. Set in a new, two-storey luxury condo on Elmwood Avenue in London's Wortley Village, the shoot depicts traditional Christmas touches working nicely in a space that's clean, minimal and anything but traditional.

In this issue we also introduce you to a family home in another village, this one just north of the city. The home is a personal labour of love, its design conceived and executed by the owners at the helm with help from some of the city's best trades. You will enjoy seeing the fruits of their labour and you'll glean an understanding of the stamina it took to pull it off so well!

Our Fall/Holiday issue pays special attention to kitchens and baths, with great ideas for these rooms in our feature stories, as well as inspiration in our Style Picks and Comfort Zone and advice from experts in our People section.

Whether you're planning to change your home in a big way or simply add a new touch here and there, I'm pretty sure these pages will have ideas for you. Here's hoping you enjoy the stories our pictures tell!

Mary Hatt

Mary Hatt, Managing Editor
mary.hatt@ourhomes.ca

Follow us nationally @OurHomesMag

LONDON MAJOR APPLIANCES

www.londonmajorappliances.com

Since 1959



Since 1959, we have been selling and servicing most major appliance brands. Let our team of experts assist you in selecting the right product to suit your style, taste and budget. With free prompt delivery, in-house service technicians, and a price match guarantee, why shop anywhere else?

Experience the difference...you'll be glad you did!

45,000 SQ. FT. WAREHOUSE!



**COME VISIT OUR
12,000 SQ. FT. SHOWROOM!**

185 Hamilton Rd., London
519.432.1862

M-F: 8:30 to 9:00

SAT: 9:00 to 6:00

SUN: 11:00 to 5:00



LOCALLY OWNED & OPERATED

SALES, SERVICE, PARTS • FREE LOCAL DELIVERY • PRICE MATCH GUARANTEE

contents

Fall/Holiday



10

ON THE COVER

Christmas In The Village.
Story, page 18.
Photography by
Jason Hartog.



14

departments

- 6 EDITOR'S NOTE
- 10 ADVICE
Kids' Bedrooms
- 14 STYLE PICKS
Bath And Kitchen Detail
- 38 COMFORT ZONE
Inspiring Aqualuxe
- 40 PEOPLE
Kitchen-Bath Gurus
- 43 HOME RESOURCE DIRECTORY
- 46 FINISHING TOUCH
Monogram It

features

- 12 HOLIDAY HINTS
Pick A Christmas Tree
- 18 HOME & BUILDER
Lofty Ambition
- 26 DESIGN IDEAS
Bold Beautiful Bathrooms
- 28 COOKING AT HOME
Tarte Tatin
- 30 FEATURE HOME
Cosy In The Country
- 44 DOUBLE TAKE
Get The Look



18



38



30

Enjoy... Indulge... Relax.



American Standard



Visit our complete showroom.

Ace Awards Best Showroom Design Centre and Ace Awards Best Sub Trade Of The Year

833 Central Ave. London 519.672.1631 brouwerplumbing.com



Is Your Pet Eating Healthy?

The best food for dogs and cats is natural and grain free. We choose products with natural preservatives and no artificial colours or fillers.

- Natural food, treats and supplements
- Collars and leashes
- Bowls and toys
- Bandanas and bowties
- Handmade sweaters and coats

RAW: Beef, chicken, fish, turkey, lamb, rabbit and duck

GRAIN FREE: Go Now -Acana Orijen - Pulsar and ZiwiPeak

DOG & CAT GROOMING

519.474.6669
1055 Sarnia Road (just east of Hyde Park Rd.)
www.naturalpaws.ca

HOURS:
Monday to Friday 10-6pm,
Saturday 9-5pm and Sunday 12-4pm

bedroom dining living occasional design

QUANTUM
487 RICHMOND STREET
519.438.5944
quantumfurnishings.com

Quantum/Verdi Showroom Now Open!

YOUR DESIGN AND LIFESTYLE CENTRE

REFINED By BRIZO

The spirit of early 1900s innovation gains 21st century sophistication with the alluring, industrial chic of the Artesso™ Kitchen Collection by Brizo, with optional SmartTouch® Technology. Available exclusively in showrooms.

brizo.com

THE ENSUITE
Bath & Kitchen Showroom

Please call to book a consultation:
519-457-3626

944 Leathorne Street,
London, ON

The first choice distributor for trade professionals and the clients they serve.

advice

KIDS' BEDROOMS

STORY **STEPHANIE REDMOND**

Kids' bedrooms can be a challenge. The characters, favourite colours and toys can all create a bit of a circus effect. Kids like bold, they like pattern, and they don't always see what matches with the same level of maturity as you do. Not to mention, you're trying to please what will likely be your toughest client!

A bedroom or playroom does not have to be decorated with the same level of sophistication as the rest of your home, but it should certainly flow. Show a bit of restraint so the space doesn't look too wild. After all, we are trying to create a restful space (for the bedroom anyhow), not a party zone.

Kids are busy!

Their needs are more than just a bed and a dresser. They require a space to sit and play, a place to read, and storage for stuffies and toys. It should be soft and inviting but also stain resistant and easily maintained. I don't believe they always intend on making a mess, but they certainly have a knack for it. So instead of choosing perishable fabrics, make sure everything is washable so it lasts.

Remember that younger kids are short!

They can't reach anything set at adult height and it causes frustration. Set hooks low so they can easily hang up a sweater or backpack and make sure there is a stool on hand for high light

1. **Bed Frame:** landofnod.com
2. **Knit Blanket and Pillow:** Restoration Hardware
3. **Smoke Alarm:** Nest
4. **Cubebot:** areaware.com
5. **Drop Pouf Chair:** camillahounsellhalvorsen.com
6. **Teepee:** parkdaleteepee.com
7. **Petit Pehr Pillow:** Pehr Designs Inc.
8. **Storage Bins:** fluf.ca
9. **Cork Side Table:** jaspermorrison.com



Designer Stephanie Redmond shares her ideas.



switches. You can ask kids to clean up, but you have to have a system in place to allow them to do it.

If you let your child choose a paint colour, I guarantee they will choose something bold. Instead of fighting a losing battle, use their choice as an accent colour on one wall or on a piece of furniture. Don't overdo it. The same applies for wall coverings. A whole bedroom in pattern can be busy and leaves no space for trophy shelves or artwork.

Lighting

Lighting is always important and you should have at least two options: One to light the space when it's playtime and one to read by in bed. If you have a desk in the room, don't forget a small desk lamp. Children like to be masters of their domains, so give them the right tools for a little independence.

It's easy to get caught up in the here and now with a child's room, especially with the younger set. But beware of the age trap. In one or two years, they will outgrow it. Think ahead! **OH**



OMEGA AUDIO | VIDEO

Let us design the perfect entertainment solution that fits your style & budget!

Matt D. Scott, Pres.

Since 2001, OMEGA Audio Video has been serving residential & commercial clients with custom designed solutions.

519-495-4788 | OmegaAudioVideo.com

Come see our newest model at London's Woodholme Park.

GENTRAC HOMES

the love your home experience™

For more information call 519.842.9090
www.gentrachomes.com



O Christmas TREE

Choosing a live Christmas tree is a time-honoured tradition that comes but once a year. Knowing what to look for, what variety to choose and how to keep it fresh and fragrant after decking your halls can be a challenge for many a yuletide enthusiast.

STORY **MELANIE REKOLA**

Heed these words of choosing well to keep your Tannenbaum from turning into a Charlie Brown special before Christmas day. And maybe, just maybe, it will last into the New Year's festivities!

PLAN AND PREPARE

Firstly, choose and clear the space where you'll be standing your Christmas tree. Measure the area, including ceiling height, but remember to subtract the height of your stand and the angel or star you'll be placing at the top. Note the size of your stand. Will your tree's trunk fit? You must be sure, as trees whose bark is stripped to fit will surely die a fast death. Are there nearby electrical outlets that are free to service the lighting? And how will you get it home? As the old adage says, if you fail to plan, you plan to fail.

CHRISTMAS TREE TYPES

Choosing an Ontario-grown tree is the best choice not only for the freshest and longest-lasting tree, but for the environment and local economy as well. Most of these evergreens are actually cut three to four weeks before they are available for sale to avoid messy sap production. You may recognize some of these specimens growing in local forests or even in your own backyard.

- 1 White Pine:** Graceful branching and soft needles make this tree a bit hard to decorate, but it can be worth it for the sheer ornamental value alone. It sports nice greenish-grey foliage too.
- 2 White Spruce:** Strong slender twigs and dark-green foliage hold ornaments well. This spruce is a moisture sucker and requires frequent watering to prevent needle drop.
- 3 Scots Pine:** A very thick, hearty, green tree that holds needles well. This is the most popular Christmas tree available.
- 4 Balsam and Fraser Fir:** Similar to white spruce in branching and shape but with softer needles. Great needle retention, and colours vary from bright green to blue green.
- 5 Blue Spruce:** Stout silvery blue or blue-grey branches with sharp, dense needles and strong branches that hold heavy ornaments with ease.

SELECTING THE FRESHEST TREE

Choosing a Grade A tree is similar to choosing the best produce at the grocery store.

- After you find the ideal-looking tree, lift it a few inches off the ground and let it drop. If needles shed from the exterior branches, this tree is far from ideal. Note that needle drop from interior branches is completely normal.
- Now it's time to give a branch a gentle squeeze. Are you left with a bunch of needles in your hand? If so, move on.
- The last test is to crush a few needles in your hand. Does it have a fresh tree scent?

That's a good sign as evergreens with little fragrance are often past their prime.

- Now have your chosen tree wrapped in netting for easy transport.

BACK AT HOME

Before bringing your new tree inside, you must make a fresh cut to its trunk. This is how the tree uptakes water, making this an absolutely essential step if you want it to last. While you're at it, remove some of the lower branches to leave room for the gifts. Once standing, be sure to give your evergreen plenty of fresh, clean water as soon as possible. This new *Arbre de Noël* is going to suck up at least a gallon of water over the next few days and needs constant top-ups. Keep at it until the uptake subsides a bit and keep water at a constant level from then on. Finally it's time to trim your tree, crank the Christmas tunes and be merry.

How lovely are thy branches! **OH**

Melanie is a certified horticulturalist and landscape designer.



JUST THE THING



PHOTOGRAPHY JACKIE NOBLE

Add flourish to your kitchen or bath with unique finishing touches.



1 KISS THE COOK

Le Creuset Dinnerware

Drench your table in vibrant colour with durable enamel dishes and cups that won't scratch or mark. Each piece is finished with Le Creuset's signature three-ring accent on the exterior. These dishes take the broiler, oven or microwave and are virtually non-stick for easy cleanup.

551 Richmond St., Unit 1A
519.850.5477 | kissthecookonline.com

2 GCW CUSTOM KITCHENS & CABINETRY INC.

Pantry Cupboard

With a sliding glass-panelled door, the MDF is painted white for a clean contrast with the reclaimed barn-board interior and sleek stainless shelves. Dimmable LED lights make your goods and dishes pretty as a picture.

3537 White Oak Rd.
519.668.3006 | gcwkitchens.com

3 THE ENSUITE BATH & KITCHEN SHOWROOM

Statement Sink

This sink with floral motif includes gold and platinum detailing and vitreous china. No two are alike thanks to slight pattern differentiations in each. Make a statement in the powder room, especially when paired with a Purist single-control faucet and lever handle.

944 Leathorne St. | 877.898.4544
theensuitebathkitchenlondonlondon.com
Continued on page 16



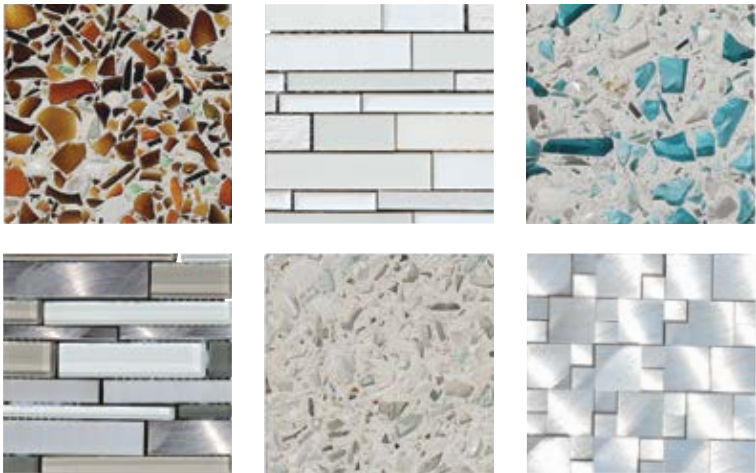
Offering unique custom fireplace solutions that will make your home a showpiece



GUILDWOOD
Lighting & Fireside

519.438.6161
5 York Street, London
Mon.-Fri. 8:30-5:30 & Sat. 9:00-5:00

style picks



4



5

4 BERNARDO GROUP LTD.

Backsplash Tile
Add some drama and funk to your kitchen by updating your backsplash tile. Interlocking shades of grey glass tiles or metallic silver tiles are subtle, yet interesting. Or get a custom look with blue and clear glass shards in a terrazzo tile.

580 Horton St. E.
519.438.5159 | bernardogroup.com

5 RICK CARTER CABINETRY

Bathroom Vanity
Redefine luxury with a custom double-sink bathroom vanity in dark maple. Tuck away clutter in two built-in medicine cabinets plus extra storage cabinets on either side while your best towels go on display thanks to handy open shelving. Topped with granite.

848 Dundas St. E., Unit 4
519.673.3382 | rickcarter.ca

6 ROTH DESIGN INC.

Serving Board
Ideal for charcuterie, cheese or breads, this one-of-a-kind maple board makes a stunning, yet practical, kitchen accessory. Hand-crafted by local woodworking artisan Andy Roth, the board just improves with age.

320 Oakland Ave.
519.951.9325 | rothdesigninc.com OH

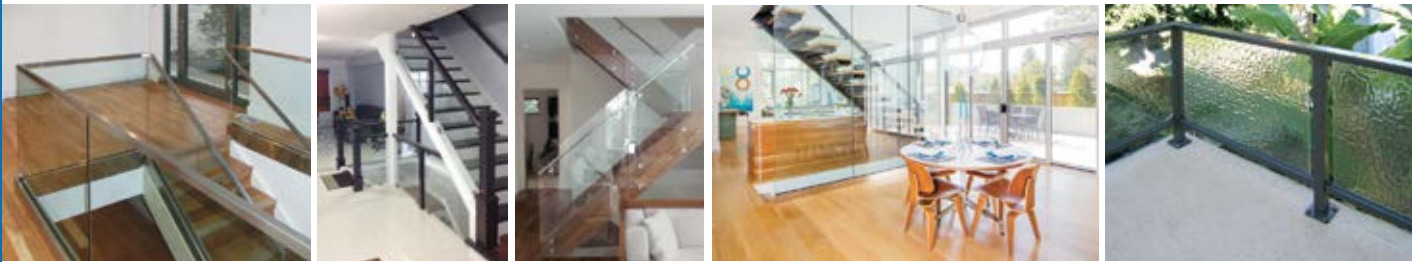
6



We custom design and build both interior and exterior **GLASS RAILINGS**, and they're designed to stand up to the elements for years to come.

There's something about a glass balcony railing that adds a touch of cinematic class to any stairway, while a glass railing on a deck opens up the view and brings a contemporary look and feel to the aesthetics of the environment. Add a greater sense of space because of the glass transparency and because the glass is tempered and quite thick, it's surprisingly strong and sturdy.

Call us for a **FREE** consultation on how to integrate the beauty of a glass railing into your home environment!



330-A Exeter Rd. London, ON.

info@glass-canada.com • 519.642.4100 • www.glass-canada.com

G

C

W

custom kitchens
& cabinetry inc.

So Good to Come Home to



www.gcwkitchens.com

St. Thomas (519) 631-8373

London (519) 668-3006

WORTLEY'S NEW *Gem*



ABOVE: There are two units in the building, this is the upper unit. Open ductwork, uber-high ceilings, clerestory-style windows and a floating stairway define the condo's loft style. **RIGHT:** For architectural impact, the building's exterior references the surrounding streetscape of the Old South. **OPPOSITE, TOP:** A festive fireside moment. **BOTTOM:** Contemporary furnishings plus warm wood equal modern comfort in the living room.



STORY **MARY HATT**
PHOTOGRAPHY **JASON HARTOG**

"What makes this project special is its architectural design," says **Carmine Gargarella** of **Bridlewood Homes**.

"We brought in elements that respect the community around it while, at the same time, incorporating a modern design that is stylish and progressive in nature."

Gargarella is summing up the stunning result of a recent partnership in London's Old South between Bridlewood, **Dave Tennant** of **Urban Concepts**, and architect **Tillmann Ruth Robinson Inc.** Two years ago, an existing structure was torn down on Elmwood Avenue to make way for a new and unique two-unit condo that now sits in its place. The condo is across the street from the city's original normal school, built well over 100 years ago. Street views capture the pleasing architectural juxtaposition of this historic landmark and its decidedly contemporary new neighbour.

Recalibrating the look of the street in a mindful way was just what Gargarella and his team had in mind when they first set to work in Old South's Wortley Village. The village, recently voted best neighbourhood in Canada by the Canadian Institute of Planners, is acclaimed for many attributes, including its diverse mix of housing. It provided the ideal ambience for a project like 152 Elmwood.

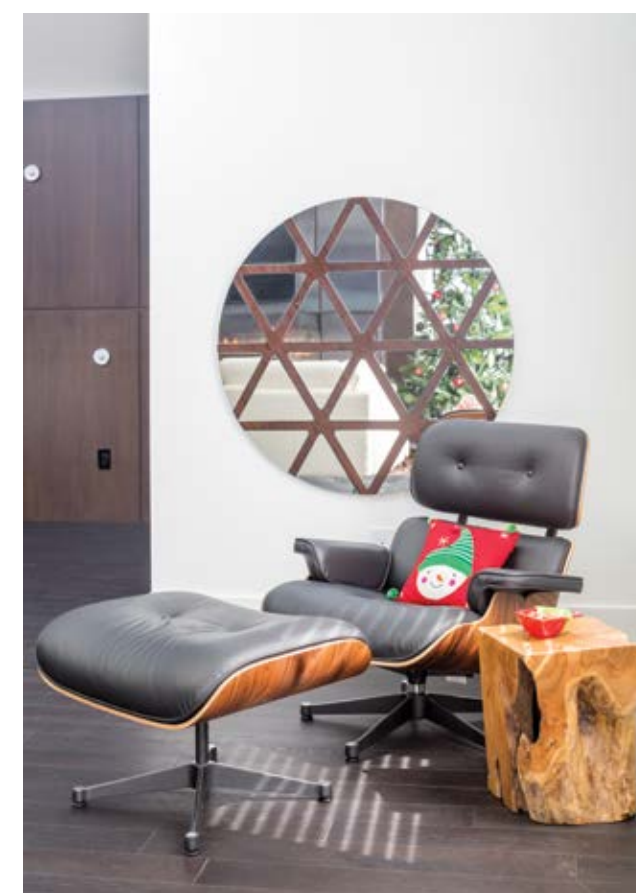
Tennant, a developer specializing in infill projects, led the group through the city's stringent process for making sure the exteriors of new structures complement their surroundings. Architect **McMichael Ruth** created his plans accordingly, paying attention to the condo's roof lines and planting gutsy contemporary windows into the reclaimed brick and wood exterior finishes that are typical of the area.

The condo's spacious interior reflects minimalist styling and industrial-inspired finishes. Designer **Kimberley Morphy's** job was to detail the space with this in mind, incorporating features such as rift-cut oak, custom light installations, cold-rolled steel and exposed heating and cooling ducts. "It suits someone who is a modern person," she says.

That modern person will no doubt be one who likes to entertain, since the living portion of the 2,200 sq.ft. home is expansive, with loft-high ceilings and easy flow between each space. **Copp's Buildall** installed smooth and streamlined interior doors and hardware, as well as the windows and trim throughout.

The condo's layout works especially well for festive, crowd-pleasing occasions like Christmas. Montigo's seven-foot horizontal fireplace (**Atchison Plumbing & Heating Ltd.**) casts a warm glow throughout the living room, kitchen and eating area. The kitchen opens to the living room, inviting guests to gather around the two-tier island (counters by **Progressive Countertop**). Dark wood cabinetry by

Continued on page 20



RIGHT & BELOW: The galley kitchen lends itself to good times, as well as efficient food prep. **BOTTOM:** Design team members Dave Tennant, left, Tom Tillmann, centre, and Carmine Gargarella, right, share a laugh.



The rear of the condo's main level includes a den, several built-in closets by **Nieman Market Design**, two bedrooms and two luxurious bathrooms that feature high-end tiling, countertops (Progressive), fixtures (Atchison), vanities (Woody's), tempered glass shower enclosures and Nuheat floors in the master en suite. Stylistic Glass provided the mirrors, including the master bath mirror with its hidden television screen for catching up on news of the day when getting ready for work or refreshed for the evening.

Continued on page 22



Woody's Custom Cabinetry offers a calm transition from tones found in the engineered hardwood floor by **FloorSource Inc.**, while white lacquered upper cabinets and backsplash tiles provide a punchy feature wall. The high-end kitchen includes a Liebherr fridge, AEG cook top and wall oven, Faber range hood and ASKO dishwasher.

The dining area, separated by a clever half wall from the condo's entry stairway and dramatically lit wood-panelled walls, also begs a crowd to gather around its sleek, extendable dining table (**Modern Living London**). Bench seating along the wall can comfortably take a squeeze of people while plenty of seating is also available on slim chairs.

Special architectural details bring energy to the condo, one standout being the glass, metal and wood stairway by **Stylistic Glass & Mirror Inc.** and **Pro-Stair & Railing Inc.** The stairway connects the main level to the upper lounge and huge outdoor terrace – ground zero for summertime entertaining. During colder seasons, the lounge becomes a cosy hideaway reminiscent of a boutique hotel, with posh cube seating for cocktails and conversation while taking in night-time views of the village outside.

OPPOSITE, TOP LEFT: The dining area's banquette is neatly tucked along the wall of the stairwell to the condo's main floor entryway. **TOP RIGHT:** A den provides a private area for work within the condo. **RIGHT:** A small bathroom serves the den and second bedroom, as well as the living area. **FAR RIGHT:** The open-plan living area and kitchen create a relaxed space for entertaining.



home & builder

The condo not only looks great, it's been designed for its occupants to feel great as well. Little was spared to secure the home, provide healthful air quality and efficiently distribute hot water. **HomeMatix Systems Inc.**, who also set up a Sonos audio-visual system reaching to the exterior balcony as well as throughout the interior, installed a Honeywell Prestige Wi-Fi touch-screen thermostat and a full-access camera to the front door with an access panel to allow visitor entry. HVAC by Atchison includes a high-efficiency hot water air handler, supplied with water from a Rinnai tankless water heater, a Bryant 13 SEER-rated central air conditioner and HRV fresh-air circulation system.

Upscale infill projects like 152 Elmwood have been going on for years in larger urban centres, and with good reason. They offer beautiful, modern homes with every bell and whistle you could ever want, plus the chance to live in vibrant neighbourhoods with established amenities and character. Looks like London's time has come. **OH**



TOP LEFT: The master bathroom features luxurious touches such as under lighting, electric in-floor heating and a behind-the-mirror television. **TOP RIGHT:** Condo living would not be complete without a cocktail lounge opening to a spacious terrace for use in summer months. **ABOVE:** Spare styling in the master bedroom adds comfortable sophistication. **LEFT:** The oversized master bath shower provides a restful oasis.

Think Copp's
for your kitchen renovation

COPPS BUILDALL

45 York Street - 519.679.9000
coppsbuidall.com

FloorSource Inc.

4333 Col. Talbot Rd. London
www.floorsource.ca
519.652.0140
carpet, hardwood, vinyl, laminate, ceramic

Bridlewood HOMES

Proud Partner of the Dream Lottery
2351 Meadowlands Way
www.bridlewoodhomes.ca
519-652-1455

PROGRESSIVE COUNTERTOP

CAMBRIA® ELLA™ QUARTZ COUNTERTOP

Visit our London Design Gallery to see large slab samples & inspirational designer installations!

CAMBRIA®

300 RIDOUT ST. N. LONDON 519-434-0019
www.progressivecountertop.com



We offer custom **GLASS SHOWER ENCLOSURES** that add a modern touch to any bathroom renovation.

Whether you prefer a privacy shower made of tinted or textured glass, overall or decorative etched appearance, or an open-vista enclosure with floor-to-ceiling glass walls and doors, we can custom design, build and install any shower space you wish. If you want a steam-room like environment, we can suggest a transom-like window to really enhance the experience. We also supply and install all the hardware for the enclosures.

Contact us today! We provide **FREE** estimates on all projects.



330-A Exeter Rd. London, ON.

info@glass-canada.com • **519.642.4100** • www.glass-canada.com

SOME OF THE PLACES YOU CAN FIND US



You can pick up your free copy of **OUR HOMES** at the following locations:

OUR HOMES is also sent via direct mail (Canada Post) to homes in the area; it is also distributed free of charge to business leaders throughout the region.

Complete and comprehensive coverage throughout:
LONDON, MIDDLESEX COUNTY & SURROUNDING AREAS INCLUDING
KOMOKA, LAMBETH, WOODSTOCK, DORCHESTER,
PORT STANLEY, ST. THOMAS, MOUNT BRYDGES, ARVA,
GRAND BEND, THORNDAL, EXETER, BAYFIELD, ST MARY'S,
ILDERTON, LUCAN and all points in between.

ourhomes
LONDON AND MIDDLESEX COUNTY

Angelo's Italian Bakery & Deli 755 Wonderland Rd N
Black Walnut Bakery Café 134 Wortley Rd, London
Canada Games Aquatic Centre
London Aquatic Centre, 1045 Wonderland Rd N
Clancy's Rainbow 1030 Adelaide St N, London
East Side Mario's 94 Fanshawe Park Rd E • 387 Wellington Rd
Fisher & Company 515 Richmond St, London
Fresh Co. 981 Wonderland Rd S • 1080 Adelaide St N
McHardy Vacuum 1225 Wonderland Rd N
Peter's Cleaners 1094 Adelaide St N
Purdy Natural 111 Mount Pleasant Ave, London
ReDecor Consignment 1055 Sarnia Rd
Remark 1190 Oxford St W, London
Rona 820 Wonderland Rd • 1282 Hyde Park Rd
The Bungalow Restaurant 910 Waterloo St
The Salad Bowl Covent Garden Market, 130 King St
Top Notch Hair Design & Esthetic 26 Kilworth Park Dr., Komoka
Trails End Farmers Market 4370 Dundas St E, Thorndale

Many of our advertisers also have **OUR HOMES** on display in their establishments for you to pick up and enjoy! Look for them while visiting all the great places throughout the area!

- Decorative natural stonework
- Full masonry fireplaces, Rumford designs and conventional
- Flagstone walkways and outdoor living areas
- Exterior stone facades, outdoor fireplaces and barbecues

Old North Stoneworks

LARRY MOORE ■ 226-378-3200

SYLVIE'S

interior design

519 851 1041

info@sylviesinteriordesign.com

the art of transforming your home into a sanctuary

TRANSFORMING • DESIGNING • DECORATION • STAGING • DECLUTTERING

THE BOLD AND THE BEAUTIFUL

STORY **YANIC SIMARD**



PHOTO: BRANDON BARRE

Searching for a little more drama in your décor? The powder room is the ultimate place to play with bold looks you would never dare apply in the rest of your home – you can enjoy it a little bit every day, without feeling overwhelmed by overexposure. Here are eight of my favourite ideas for getting a big look in this small space, and satisfy your craving for design excitement.

Playful Pendants

In a primary washroom, balanced lighting is especially important. In a powder room, however, consider choosing a pendant light that casts beautiful shadows across the room. One small hanging fixture will feel like a grand chandelier here, and the ambience it creates will be a magical moment for guests.



grahambrown.com:
Honolulu Palm Green
by Julien MacDonald

Cole & Son:
Feather Fan 89/4014

Powerful Patterns

Wallpaper is back in a big way, and the powder room is a great space to switch-up from paint. In a typical small bath, a large amount of wall surface is taken up by the door, the mirror, a window and the white fixtures, all of which break up even the boldest print – so you're free to run with your wildest passions. Try nature-inspired materials here, such as quartzite and exotic patterns like floral or tropical birds to give the bathroom a sense of warmth and luxury.



WAC Lighting:
Rocket Pendant

Omexco: Mica
Wallcovering
MCA3311

PHOTO: BRANDON BARRE

online Get more design ideas at ourhomes.ca/mag/design

Magnificent Marble

Marble counters may seem too high maintenance (or too budget-busting) for a larger space such as the kitchen, but in a powder room, it only takes a small slab to create a vanity top, which will likely see gentle use. Indulge your taste for marble here, and you can enjoy it every day without the worry.

TIP: Ask a stone supplier what they have available in off-cuts, and you may be able to find a suitable (and beautiful) mini-slab for a bargain price.

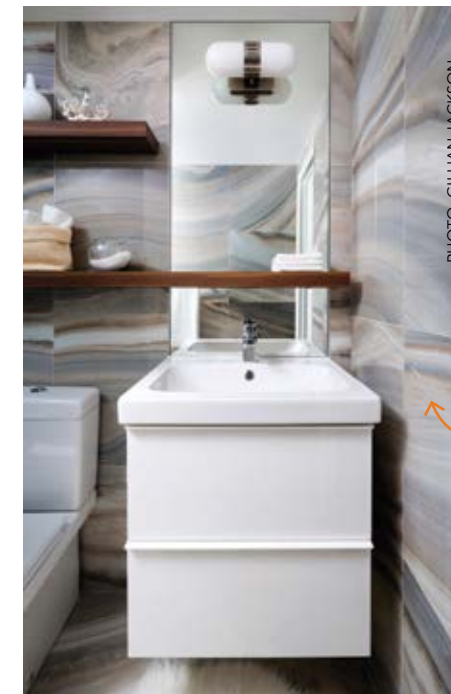


PHOTO: GILLIAN JACKSON

Deliciously Dark

Love the sophistication of a deep, dark colour, but worry about feeling like you live in a cave? A powder room is the perfect place to take a walk on the dark side without getting tired of it – plus, it's a small space to repaint later when tastes change, so there's no need to worry about playing it safe.

Benjamin Moore
2121-10 Gray

Solid Stone

Floor-to-ceiling stone is the ultimate luxe look for a bathroom, and in a powder room this can be achieved on a reasonable budget, as the walls are typically smaller. Splurge on a favourite tile, and break up the effect with a large inset mirror panel.

Disappearing Mirror

Have a beautiful wall treatment to show off? Skip the mirror over the vanity, for a rule-busting look that will surprise guests. You can always add a mirror to the back of the door if you don't quite feel bold enough to go without one completely.

Colour Overhead

Powder rooms tend to be tall compared to their narrow width, so a painted ceiling helps visually lower the room to create both drama and balance. Try Benjamin Moore's 2062-60 Blue Hydrangea and feel like you have a brand new skylight overhead. Blue hues especially will make white surfaces look even whiter for a fresh, clean atmosphere.

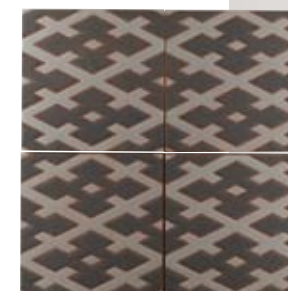
Benjamin Moore:
2062-60
Blue Hydrangea

Look Out Below

Drama doesn't have to come from the walls or even the ceiling! Unadorned walls in a demure paint treatment (like Benjamin Moore's OC-23 Classic Gray – one of my signatures) paired with an eye-catching floor creates an unexpected, European flair that puts all the emphasis underfoot. **OH**

Benjamin Moore:
OC-23 Classic Gray

Add drama underfoot



Fireclay Tile:
Diamond Lattice,
Dark Motif



Fireclay Tile:
Ogee Drop in
Azurine and
Cerulean



PHOTO: GILLIAN JACKSON

Cercan Tiles:
Lattice Onyx
Yellow and Snow
White Polished

caramel TARTE TATIN



STORY AND PHOTOS **PAT CROCKER**

Elegant, festive, and best of all, easy, this open-faced tatin, or fruit pie, may be made up to four hours ahead of time and kept in the refrigerator (just bring to room temperature before baking).

Puff pastry is a simple dough that when cooked separates into several thin layers of light, flaky and crisp sheets. There are excellent store-bought brands available in the supermarket frozen pastry section. Thaw the dough in the refrigerator overnight and, if not pre-rolled, roll out on a lightly floured board. You only need one square or pre-rolled sheet of puff pastry for this recipe, so remove from the package and thaw, resealing and freezing the remaining square or sheet for later use. For this dessert, you will need a pan that can be used on top of the stove and in the oven because you make the caramel sauce in the same pan used to bake the tart. If you have a tarte tatin pan, use it, however a metal pie plate or cast iron skillet works just as well.



**Makes 1 tarte,
4 to 6 servings**

- ¾ cup (175 mL)
caster sugar
- 3 Tbsp (45 mL)
unsalted butter
- ½ package
(14 oz/397 g)
puff pastry, thawed
(see recipe notes)
- 3 pears, halved
and cored

- Preheat oven to 375°F (190°C).
- Heat a tatin dish, pie plate or skillet over medium-low heat for 2 minutes. Add sugar and heat without stirring for 2 to 3 minutes or until the sugar begins to liquefy around the outside of the pan or in hot spots. Gently stir for 6 to 8 minutes. Turn off heat and keep stirring until all the sugar has melted. Immediately remove from the burner and beat butter into the caramelized sugar. Set aside to cool, stirring occasionally.
- Roll out one square of puff pastry to about 9-inches (23 cm) square. Arrange pear halves in one layer, cut side down in the tatin dish, nestling them in the caramel. Cover the pears with pastry, tucking in the edges all the way around the pan.
- Bake in preheated oven for 25 to 30 minutes or until pastry has puffed up and is evenly browned. Remove from oven and let the tart rest for 10 minutes.
- Position a serving plate over the tatin dish and turn plate and dish upside down so that the pears are on top of the pastry on the plate. Serve immediately while warm. **OH**

Pat Crocker is a culinary herbalist, writing and growing herbs in Grey County. She is the author of 18 cookbooks.



FOREST CITY FORMING LTD.

FORMING SPECIALISTS

- HIGH-RISE • RESIDENTIAL
- COMMERCIAL • INDUSTRIAL

RENTALS

- CONCRETE PUMP • STONE SLINGER
- TOWER CRANE & MOBILE CRANE
- CONSTRUCTION DISPOSAL BIN

2940 Dingman Drive, London, ON N6N 1G4

T: 519-455-4116 • F: 519-455-8057

estimating@fcfgroup.ca



INNOVATIVE. TIMELESS. INSPIRING.

519.673.3382 | info@rickcarter.ca | www.rickcarter.ca
848 Dundas St., E., Unit 4, London, ON N5W 2Z7



CATERING

Catering to London's finest venues & private parties...with personality.

519.453.8222 steelgrill.com



Weddings • Corporate • Cocktail Receptions

redefining country charm

STORY **NICOLE LAIDLER**
PHOTOGRAPHY **JASON HARTOG**

London area homeowner Miriam and her husband took a decidedly hands-on approach to building their home. Not only did the couple come up with the design and floor plan, they were their own general contractor, working directly with their trades from start to finish.



TOP: Traditional styling on the exterior belies avant-garde flair inside the home. **ABOVE:** The living area is part of the main level's open floor plan and conveniently connects to the kitchen. Vibrant colour pops, textural furnishings and lots of wood finishes provide a warm contrast to the sleek and functional concrete floor. **RIGHT:** Homeowner Miriam with Calvin, the family's playful Bernese mountain dog.



"This project was my job for two years," says Miriam. "My husband looked after the structural components and I did the follow-up. I was at this house every day while it was being built."

The entire process took about three years, she says, from when she started looking at houses and researching floor plans to the move-in last February. Even then, the home was still a work in progress.

"The only things here were the lower kitchen cabinets," says Miriam. "It was a tough spring! I had to be practical about cleaning because we still had trades coming in and out during the week."

Today, the chaos of that time is a fading memory and the family is able to fully enjoy a home built to their specifications. At around 5,200 square feet, the four-bedroom house sits on over an acre of land on a quiet residential street in a rural community just north of London where the family has always lived.

"Not many lots become available here, so when this one came up we decided to purchase it," Miriam says.

Behind the home's traditional exterior lies a decidedly modern living space that is both welcoming and functional.

Philip Biemann of **Hutton Biemann Design Inc.** and architectural designer **Simon Coles** of **Blueline Inc.** worked closely with Miriam to ensure the home's look and layout connected on both aesthetic and practical levels. Many of the interior design elements, however, were decided as the building progressed.

"I didn't come into the house with everything designed," says Miriam. "I just knew I wanted an open space and a lot of natural light." She also wanted a polished concrete floor. "I've always loved them," she says. "I love the idea of a completely seamless floor that is non-existent to the eye and that doesn't compete with other design elements."

Continued on page 32





Finding trades willing to make her dream a reality proved to be a challenge. “So many people threw up their hands and said it couldn’t be done,” Miriam recalls.

Eventually, **Forest City Forming Ltd.** stepped up to pour the floors and **Jason Dietrich** of **DeFine Concrete Polishing** gave them the sleek, non-shiny finish she had envisioned.

The floors’ clean lines allow the stunning woodwork by **Martin Jesko Custom Cabinetry** to take centre stage throughout the open-concept home.

“Miriam wanted something unique and functional; something with a wow factor,” says Martin. “She gave me a lot of freedom in my designs and was a lot of fun to work with.”

Instead of a traditional hall closet, visitors are welcomed by a sleek wall-to-wall unit that looks like a piece of fine furniture. Martin also helped Miriam design the kitchen, which features white acrylic cupboards framed with the same striking walnut trim.

“Walnut is a timeless wood with a beautiful grain so it creates visual interest,” Martin explains.

The contemporary cabinetry conceals two Fisher & Paykel drawer dishwashers and two 24-inch Liebherr refrigerators. “We love to entertain,” Miriam explains.



The large centre island is a natural gathering spot for this busy family. Topped with Black Galaxy leathered granite from **Progressive Countertop**, the unusual textured surface was chosen because it provides the durability of traditional polished granite without the need for constant shining.

In the adjacent dining area, stained walnut trim, designed and installed by James Melnick of **MelBarr Design Build Inc.**, transforms the room’s large picture windows (**Dashwood Industries Inc.**) into a rustic focal point, while double doors (**North Pole Trim & Supplies Ltd.**) lead out to a spacious covered patio.

The unique walnut trim was provided by **Black River Timber Framing** and was part of the home’s design evolution, says Miriam, adding she likes the juxtaposition of rustic and modern elements. Black River also sourced two unfinished barn beams that now stand as columns just inside the front hall,



as well as the barn beam mantel in the living room and exterior timber framing.

Miriam describes her approach to interior design as bold and uncluttered, saying she prefers to have only one feature element in each room. In the great room, that focal point is a wood burning fireplace from **Porky’s BBQ, Hearth & Spa**, nestled in a custom stone surround built by Larry Moore of **Old North Stoneworks**. A feature wall painted Louisiana Hot Sauce (Dulux) gives the space a splash of colour, in contrast to the calming shade of Collingwood (Benjamin Moore) used throughout much of the ground floor.

Continued on page 34



TOP LEFT: Behind the kitchen and across the hall from the laundry and mudroom, a bank of glossy cabinets stores extra household items. **TOP CENTRE:** Martin Jesko loves a kitchen island that seems to “float,” as he puts it. This one features metal trim by Mark Deren. High gloss white on the cabinets makes a zesty contrast. **TOP RIGHT:** A laundry room that’s so much more with counter space, a bench and an additional freezer and fridge for extras. **ABOVE:** Pleasing contrasts continue, such as the glass-panelled door and rough floor-to-ceiling beam at the entry to the den, which opens off the foyer. **RIGHT:** The dining room provides yet another sophisticated pairing of warm wood and sleek metal.

feature

Knowing this would be the couple’s final home, Miriam planned ahead. The master suite is located on the main level. With a large foyer, his-and-hers walk-in closets, airy bedroom and spa-inspired bathroom featuring a glass shower enclosure by **Accent Glass & Shower**, unique tile work by Melbarr and fixtures from **Aqualuxe Bath Showroom**, the suite is a spacious retreat the couple can enjoy for years to come.

“I also put enough storage on the main floor so that in the future we can be totally self-sufficient,” says Miriam. That meant creating a ground-floor laundry room large enough to hold a second freezer and refrigerator, as well as a sink and small prep area. And thanks to a long, floating wall unit cleverly designed by Martin, Miriam is able to store her extra kitchen appliances and dinnerware on the ground floor, as well.

Martin also lent his design skills to the mudroom, where a custom-built storage locker the length of one wall provides a stylish and practical place to keep coats and shoes.


A floating steel and reclaimed barn-board staircase (Black River, with glass supplied by Accent Glass) leads past an exposed red brick wall (supplied by **Grand River Natural Stone Ltd.** and installed by **Tom Alberto** of **T.A. Mason Contractors Ltd.**) to a sunny loft on the second floor. With its pegged barn-board floor (supplied by Black

Continued on page 36



The master suite is a luxurious retreat, including a large spa bathroom.



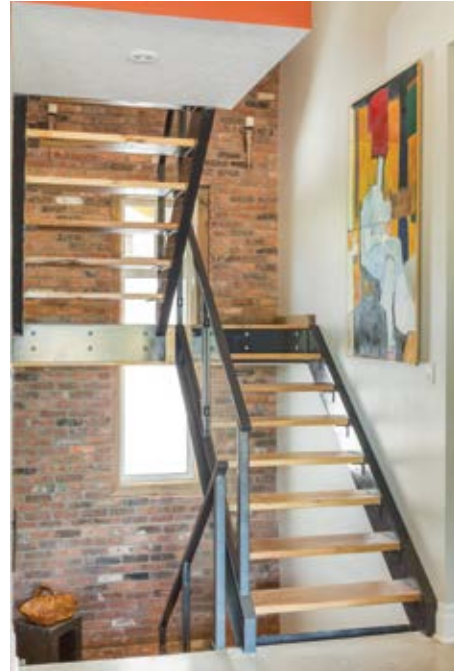


MARK
DEREN

CUSTOM
METAL DESIGN

info@markderen.com • 519.777.6262 • www.markderen.com

feature



River and installed by Melbarr), this is where family members like to relax with a good book, Miriam says.

The couple's grown children enjoy their own living area in the home's finished basement, where leftover reclaimed brick was used to create a striking fireplace surround and a feature wall in one bedroom.

"My daughter loves to decorate," says Miriam, adding that originally she had wanted to paint the brick white. Upon seeing it finished, however, she quickly decided to leave it as is.

After spending more than two years designing and overseeing the construction of her home, Miriam is now leaving the landscaping to **Jason Triemstra** of **Different Seasons Landscaping**.

Although it was a lengthy process, Miriam says that for the most part the custom-build ran smoothly.

"I can't say enough good things about our trades," she says. "Everyone was fantastic and worked together seamlessly."

And being involved in every aspect of the design and construction process allowed the couple to build at their own pace, making changes as the house took shape.

"There is no single element that I love the most about this home," says Miriam. "I just enjoy coming into the house. It feels peaceful. It just feels right." **OH**

TOP RIGHT: The glass, metal and open-tread stairway links the home's three levels and creates an industrial loft look with reclaimed brick and tall window. **ABOVE:** Reclaimed brick continues in one of the lower level bedrooms, creating a chic urban vibe. **RIGHT:** Another bathroom features a sunny window and funky accents from colourful art, floor mat and countertop accessories.



AFFORDABLE ELEGANCE



VANICO MARONYX

aqualuxe
BATH SHOWROOM

1350 Fanshawe Park Rd. W., Unit 2, London
t: 519.641.7555 • f: 519.641.7551 • www.aqualuxelondon.com



BATH TIME

PHOTOGRAPHY JACKIE NOBLE

THE PLACE: Sometimes the name says it all. **Aqualuxe Bath & Kitchen Showroom** promises products above and beyond the ordinary and, of course, luxurious! The bright interior space delivers with an array of vanities, toilets, sinks and taps. “We try to be the opposite of a big box store in product and service,” says owner Scott Griffeth. Customer favourites include Vanico vanities, American Standard and Toto toilets, Riobel faucets, Fleurco shower doors and tubs and Blanco kitchen sinks and faucets. Scott and his father were in the wholesale plumbing supplies business in Windsor and London. This eventually led to opening a showroom here. Scott figured that for a city the size of London there weren’t enough retailers offering upper-end products. Eight years ago, he opened shop to fill that void. Aqualuxe is located on the edge of northwest London, easily accessible to people living in town but also to those in the surrounding region.



THE STYLE: This is a showroom that’s all about product, from safe-choice classics to the sleek and contemporary. Scott explains the majority of his business comes from people who are renovating their homes and working with contractors or designers on spa-like bathrooms. Usually, they have a good idea of what they want in terms of style and function. For this reason, he no longer sets up vignettes within his showroom. Instead, Scott has opted for a functional layout to show as many products as possible. Scott says, “We’ve tried to make the showroom relatively straightforward and easy to move around.”

ON TREND: Wall-hung vanities and shower systems that combine rain head and hand-held spray options.

GET THERE: Aqualuxe Bath & Kitchen Showroom
1350 Fanshawe Park Rd., Unit 2
519.641.7555 | aqualuxelondon.com **OH**



Scott Griffeth, Owner

PROFESSIONAL SMARTS

Listen up as London pros advise on purchases for kitchen and bath.

JAMIE PATON, *Vice President*
Paton Bros. Ltd.

Think about... functionality. The height of toilet seats may be rising but you've got to go with what's personally comfortable. And keep your quest for style under control – the prettiest faucet isn't always the best buy.

Beware of... body sprays. They look great in the shower but require the kind of water pressure most homes don't offer.

I love... a hand-held shower option, and American Standard's touchless toilet that flushes with a wave of the hand.



GARY MCKAY, *Showroom Manager*
BRENDA KEARNEY, *Consultant*
Brouwer Plumbing and Heating

We recommend... buying quality fixtures and name brands that are dependable and come with warranties. Consider functionality and style when selecting.

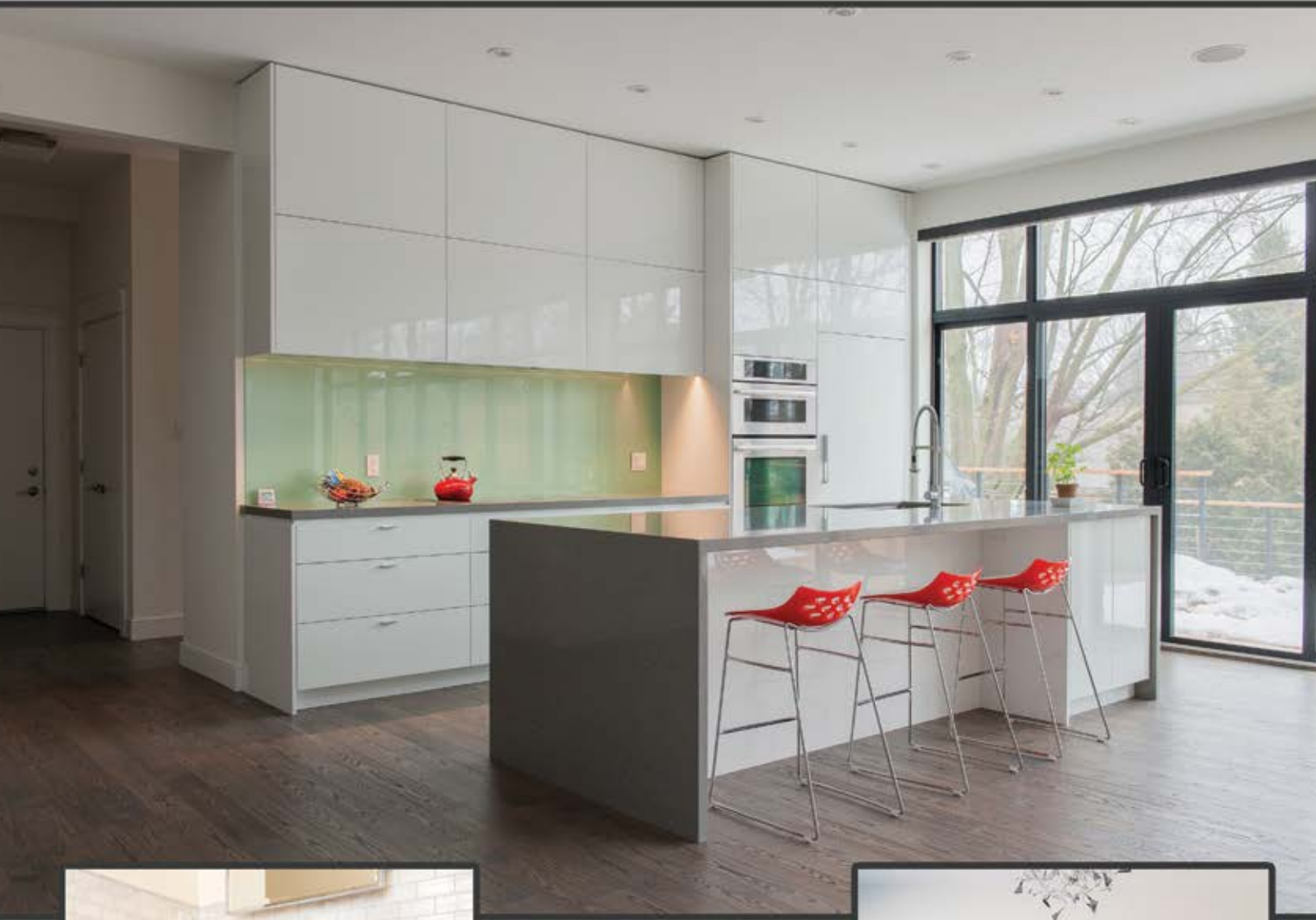
Avoid future headaches by... purchasing from knowledgeable professionals and hiring qualified licensed technicians for installation.

I love... Brizo's new kitchen faucet, the Artesso, with an articulating arm that is fun and funky.

Continued on page 42



suit your individual style
MARTINJESKO.com
CUSTOM CABINETRY



CUSTOM
DESIGN
BUILD
INSTALL



519-872-9252
MARTIN@MARTINJESKO.COM

MARTIN JESKO

Designer and Cabinet Maker,
Martin Jesko Custom Cabinetry

You really should... consider using wood other than the standard maple, oak or cherry. These are reliable choices but there are unique alternatives such as walnut, bamboo, teak and beech.

Avoid... rushing! Take your time to gather ideas, and consult several designers since each one may have ideas that appeal to you.

I love... the kitchen island. It is a functional piece as well as a gathering place, and it offers lots of scope for unique design.



PHOTO: JASON HARTOG

LAURA JOYNT

Designer, Kitchen Installation
Copp's Buildall

Remember to... get personal references from your designer, do your homework, and have an idea of your style preferences, budget and time frame.

Don't forget about... lighting! Not so long ago, lighting was an afterthought. Now it's all about how many pot lights do you need? How many pendant lights? Lighting is key to the kitchen plan.

I love... classic white, a timeless option that complements most rooms.



J. VANDERHOEVEN

Marketing Director,
London Major Appliances

Pay attention to... terms of service. Most retailers in town carry the very same appliance makes and models, but service packages can vary widely.

Be careful... when buying a washer. How do you do your laundry? Do you have many specialty loads like fine fabrics? Answer these questions and you'll end up with the right machine for you!

I love... cooking appliances. They bring passion to the kitchen. **on**



OUR HOMES attracts the area's finest businesses to advertise in our pages, and utilize our unparalleled distribution and coffee-table appeal to market their products and services. We're making it easier for you, our readers, to become educated as you plan your home- and real estate-related purchasing decisions. View these business ads online at ourhomes.ca/london. The listings below are organized alphabetically by industry.

APPLIANCES

London Major Appliances, 7

AUDIO VIDEO/HOME AUTOMATION

Omega Audio Video, 11

BALCONIES & RAILINGS

Glass Canada Limited, 17, 24

BUILDERS/CUSTOM HOMES

Bridlewood Homes, 23

Gentrac Homes, 11

Sifton Properties Ltd., 48

BUILDING SUPPLIES

Copp's Buildall, 23

COUNTERTOPS/CONCRETE/
STONE/GRANITE

Progressive Countertop, 23

CUSTOM CABINETRY

GCW Custom Kitchens &
Cabinetry Inc., 17

Martin Jesko Custom Cabinetry, 41

Rick Carter Cabinetry, 29

FIREPLACES & STOVES

Guildwood Lighting & Fireside, 15

FLOORING

Floor Source, 23

Forest City Forming, 29

FOOD/DRINK/CATERING

Steel Grill Catering, 29

HOME ACCENTS/COLLECTIBLES/
DÉCOR/FURNITURE

Mark Deren Custom Metal Design, 35, 45

Quantum Interiors, 10

ReDecor Consignment, 45, 47

HOME IMPROVEMENTS/
RENOVATIONS

Duo Building Limited, 2

Gentrac Homes, 11

Paton Bros. Ltd., 3

INTERIOR DESIGN

Sylvie's Interior Design, 25

KITCHEN & BATH

Aqualuxe Bath, 37

Brouwer Plumbing, 9

Copp's Buildall, 23

Duo Building Limited, 2

GCW Custom Kitchens &
Cabinetry Inc., 17

Glass Canada Limited, 17, 24

Martin Jesko Custom Cabinetry, 41

Paton Bros. Ltd., 3

Rick Carter Cabinetry, 29

The Ensuite Bath & Kitchen Showroom
(a Division of Emco), 10

LIGHTING

Guildwood Lighting & Fireside, 15

Omega Audio Video, 11

METALWORKING

Mark Deren Custom Metal Design, 35, 45

MILLWORK/TRIM/MOULDINGS

Copp's Buildall, 23

NEW HOME COMMUNITIES

Bridlewood Homes, 23

Sifton Properties Ltd., 48

PAINTING & DECORATING

Clancy's Rainbow, 5, 45

Hyde Park Paint, 5, 45

London Decorating Centre, 5, 45

PAINTING, PRIMING, BLASTING
& STAINING

Custom Soda Prep & Paint, 4

PET SERVICES

Natural Paws Pantry, 10

STONE MASONRY

Old North Stoneworks, 25, 45

WINDOWS & DOORS

Copp's Buildall, 23

Glass Canada Limited, 17, 24

OUR HOMES is committed to ensuring the businesses above appear under the correct headings. To make a correction, or to have your business listed under more than one heading, please email sylvie.roth@ourhomes.ca. To have your business listed in our Home Resource Directory, call us to advertise at 519.851.1041.

MODERN ARTS & CRAFTS

Recreate this look in your own home.

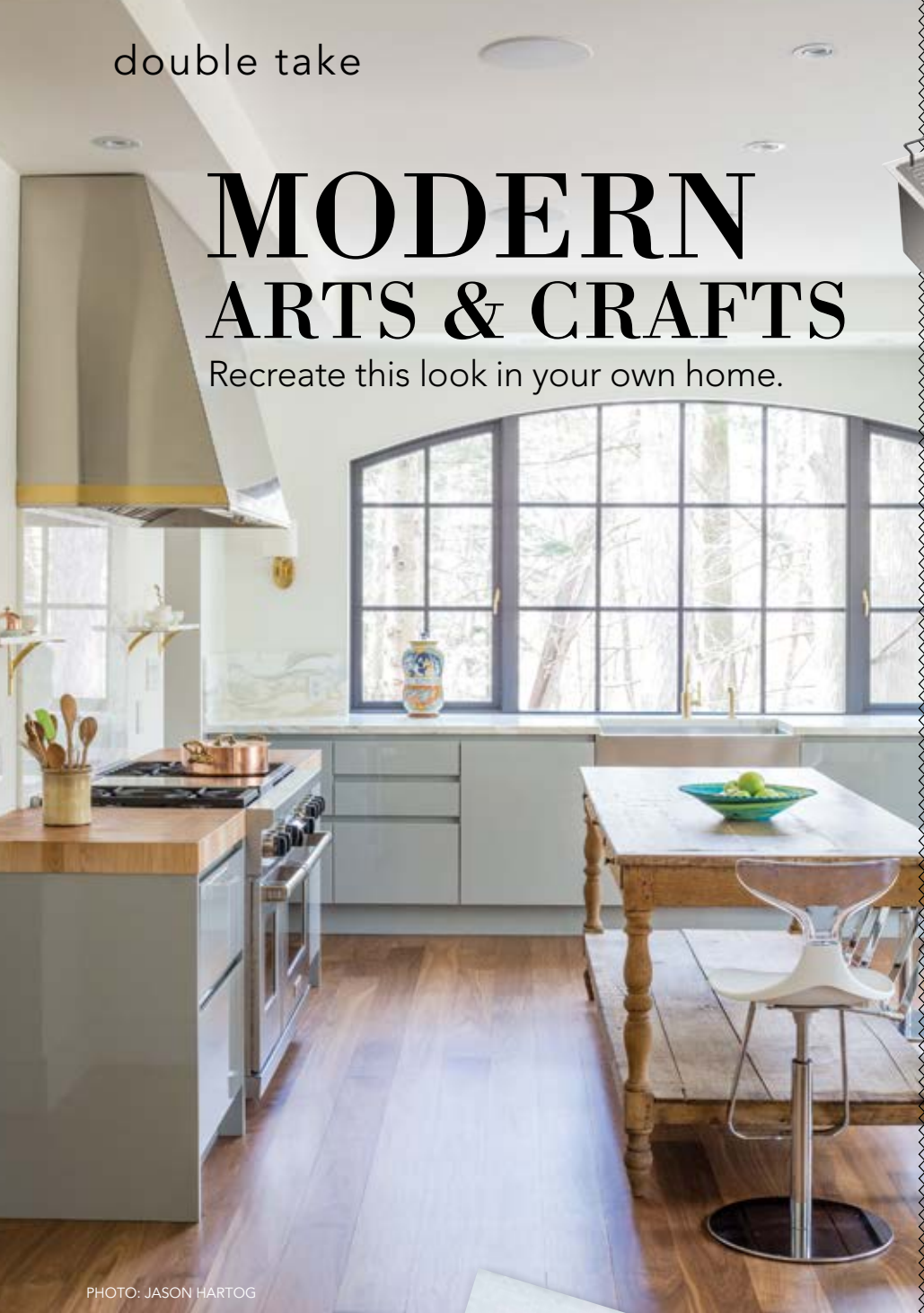


PHOTO: JASON HARTOG

1. KOHLER: Strive Apron-Front Sink **2. NEWPORT BRASS:** East Linear Pull-Down Kitchen Faucet in Forever Brass **3. SUNPAN MODERN HOME:** California Adjustable Barstool **4. AYA:** Milano Light-Grey, High-Gloss, Lacquered Cabinet Door **5. THERMADOR:** 48-inch Professional Series Pro Grand Commercial Depth All Gas Range **6. M NAEVE:** 19th Century French Draper Table **7. ANTOLINI ITALY:** Bianco Lasa Covellano Fantastico, Backsplash or Countertop **8. FALK COPPER COOKWARE:** Casserole Pan



1



2



3



4



5



7



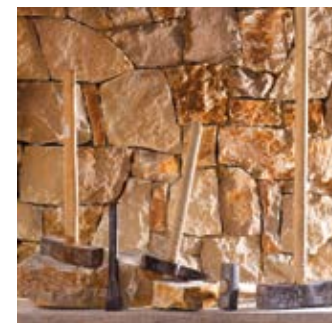
8



6

» SOURCE IT

THE NEW, NEAT, UNIQUE, AND FABULOUS IN LONDON AND THE SURROUNDING AREA



OLD NORTH STONWORKS

Larry Moore, principal mason for Old North Stoneworks, has been crafting custom stone projects for almost 25 years.

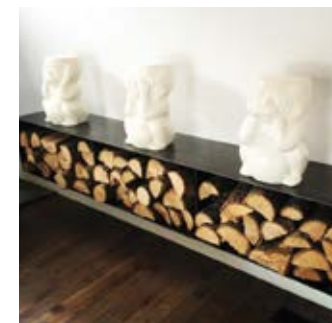
Coming from a long line of masons and tradesmen, Larry certainly comes by his trade honestly, learning the old world masonry skill, cutting, sizing and facing using only a hammer and chisel. Not much has changed since the day his great-grandfather settled in the Hespeler area, making a name for himself working on the old stone buildings and homesteads. "The only thing that is different from my great-grandfather and I, are the trucks we drive."

Larry began his journey working in the London area, building flagstone porch tops, walkways, patios and pool surrounds, then incorporating ledgerrock into his designs, building decorative stone walls, driveway pillars and outdoor BBQs. Working with wall stone then led to laying stone on custom homes and cottages. In 1999, Larry moved to Huntsville to work in the Muskokas, learning a completely different "animal" – the Canadian Shield granite. Spending almost 14 years in Muskoka saw the opportunity to learn, create and build many successful stone projects from full masonry fireplaces with hand-chiseled mantles and hearthstones, to cottage exterior facades with rock-faced archway lintel stones.

Coming full circle, Larry has returned to the city of London. "I am very excited to be back and work with the wonderful people of southwestern Ontario."

226.378.3200

(Please see ad on pg 25)



MARK DEREN CUSTOM METAL DESIGN

Mark Deren specializes in the design and fabrication of modern and trendy steelwork. From coffee tables and shelves to railings and bed frames, we work with our customers to create custom metal designs that fit their residential and commercial needs.

Our passion is building pieces that suit your style and add a contemporary industrial accent to your space.

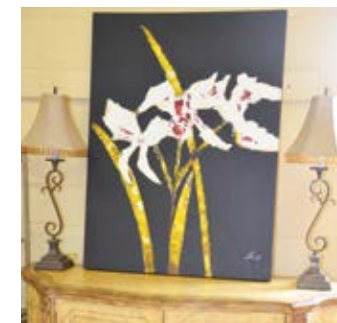
Our experience in the metal fabrication industry began more than 20 years ago with the original family business started by Mark's father, John, and naturally evolved into a new branch of the business operated by Mark.

With quality workmanship and a keen eye for detail, our finished products will give you a refreshingly original look. We work with interior designers and other craftsmen, such as Martin Jesko Custom Cabinetry, to create pieces like no other.

Have an idea? We offer free consultations and estimates and will work with you to turn your vision into reality!

Visit our website for more photos, ideas and information.
519.777.6262
markderen.com
instagram.com/custom_metal_design

(Please see ad on pg 35)



"I SHOULD HAVE BOUGHT IT THE FIRST TIME I SAW IT!"

Unique, one-of-a-kind, upscale home accents and furniture are featured in ReDECOR'S 3,000 square foot showroom. Inventory is changing on a daily basis, so as many Londoners have learned, they are here today, sold tomorrow.

We offer carefully selected treasures from over 500 homes in southwestern Ontario. We feature upscale pieces from Austin Taylor, Jennings, Montauk, Thomasville, Gielen Design, Art Shoppe etc. Leather sofas, recliners, loveseats, marble tables, wrought iron/glass dining sets, lamps, Waterford crystal, artwork, chandeliers, vases, bedroom sets, new cowhide rugs, teak cabinets, bar stools, mirrors, accent chairs, are just a few of the fabulous finds available at a fraction of the original retail price.

Consignments are featured for 80 days in our showroom. It is a 50/50 split of the final selling price. A 15% discount is available on Day 31 and a further 10% reduction is available on Day 61. We offer a pick-up and delivery service for all consigned and sold items.

Visit our website to learn more about consigning with ReDECOR and view our always changing showroom inventory page. We'd love to have you visit our showroom and experience the 'thrill of the chase'.

ReDECORconsign.com
INFO@ReDECORconsign.com
1055 Sarnia Rd, London
226.884.4144

(Please see ad on pg 47)



REFRESH YOUR HOME WITH BENJAMIN MOORE PAINTS

Looking for the latest colour trends, helpful advice, and trusted products? Look no further than your three London Benjamin Moore dealers: Clancy's Rainbow (North), Hyde Park Paint (West), and London Decorating (South).

These stores are all independently owned. Clancy's is the oldest Benjamin Moore store in London with over 40 years of service. Hyde Park and London Decorating have been dealers for over 25 years. Each store is a full-line Benjamin Moore dealer, carrying all the trusted Benjamin Moore products that Londoners have come to know and love, as well as a wide variety of colour tools and painting supplies.

All three stores have in-store designers that can provide expert advice for each of your projects.

Open 7 days a week for all your decorating needs.
clancysrainbow.com
519.434.3201
hydeparkpaintandpaper.com
519.472.4100
londondecorating.ca
519.686.9929
(Please see ad on pg 5)

finishing touch

PHOTOGRAPHY TARA WEST

LEAVE YOUR MARK

Personalize your home with letters or words.



DECORATE

Incorporate your family name, favourite place or motto into your décor.



CHILDREN'S ROOMS

Letters and words inspire, teach and add personality to a nursery or child's room.



GIFTS

You can monogram absolutely anything these days. Monogrammed gifts show you've taken a little extra time to make gift giving extra special.



ORGANIZE

Homes remain tidy when everything has its place.



ReDECOR

CONSIGNMENT

FINE FURNISHINGS & HOME ACCENTS

ReDISCOVER Fabulous Finds Today, Tomorrow ...



ReDECOR's showroom features 3000 square feet of gently used, upscale furniture and home accessories at a fraction of the original price. Contemporary, antique, vintage, traditional or modern decor have been carefully selected for your consideration. ReDECOR offers the rare combination of elegance with value. Unique, one of a kind finds are here today, sold tomorrow.

1055 Sarnia Road,
London ON N6H 5J9

226.884.4144

WWW.REDECORCONSIGN.COM

1. WILLIAMS-SONOMA HOME: Monogrammed Soaps 2. INDIGO: Monogram Mugs 3. INDIGO: Monogram Wax Seal Set
4. POTTERY BARN KIDS: Round Sabrina Hamper with Navy Harper Sabrina Liner 5. POTTERY BARN KIDS: Mini Harper Letter Hooks



Experience. The Difference.™

Homes built for life.

Sifton

There's always time to play.

Build those memories of nights filled with fun, family and buttery popcorn, in a home built by Sifton. From expansive living areas, to solid construction and high-end finishes, Sifton concentrates on craftsmanship, so you can concentrate on life.

Energy Star® Homes. Private Décor Centre.
Building in 8 Great Communities.

519.850.0756



Sifton.com