

FALL 2012

STYLE ■ COMFORT ■ IDEAS ■ REAL ESTATE

ourhomes

O A K V I L L E A N D B U R L I N G T O N

divine
DESIGN

fall FUN
ON THE FARM

PEOPLE WITH
PANACHE

first
ANNIVERSARY
ISSUE

plus
BEAUTIFUL
BATHROOM RENOS

SIMPLY EXQUISITE CUSTOM CRAFTED CABINETS



2102 SPEERS RD, OAKVILLE, ONTARIO, L6L 2X8
P: (905) 842-3095 | F: (905) 842-6407
WWW.TOPNOTCHCABINETS.COM

m i c h a e l B R E J N I K
Sales Representative

OFFICE (905) 335-3042
TOLL-FREE 1-800-290-0163

www.michaelbrejnik.ca
michael@michaelbrejnik.ca

ROYAL LePAGE

BURLOAK REAL ESTATE SERVICES
INDEPENDENTLY OWNED & OPERATED BROKERAGE



2 TUCK AREA CUSTOM HOMES

Two custom built homes in the highly sought after TUCK School District. We can customize your plans or work with ours to create your Dream Home.



MILLCROFT RAVINE

\$390,000 Completely updated Millcroft town on ravine!!! Hardwood, new kitchen w/S/S appliances, pot lights, updated baths, walkouts to gorgeous views from main and lower levels. Newer roof, windows and doors. Stunning must see!!



DESIGNER LAKEFRONT CONDO

\$425,000 Completely redone 2 bdrm condo in "Waterford Place". Top flr unit w/west exposure. Too many updates to mention: granite, S/S appliances, trim, paint, lighting, coffered ceiling. Locker & 2 parking spaces. Text:T672081



UPGRADED 3 BDRM HOME

\$500,000 Steps to 403/407/QEW, schools, transit & shops. Over \$50K in recent upgrades incl: kitchen, roof, windows, stamped concrete front & rear driveway, 2nd floor bath & furnace. Fin bsmt w/gas frpl & 3pc bath. Text: T628837



DOWNTOWN MILTON

\$750,000 Main St in downtown Milton. Well maintained bldg w/tall ceilings on both levels. Vacant main flr perfect for retail/office. Residential 2nd flr is gorgeous loft w/slate & hrdwd flrs & currently leased. Text:T672849



DOWNTOWN OAKVILLE BUILDING

\$899,900 Own a part of downtown Oakville's history! This one-time radial train station could be converted to commercial office space, an interesting retail space or even a bar/restaurant opportunity. Text:T594541



OAKVILLE CUSTOM BUILD

\$1,420,000 Gorgeous 4+2 bdrm, 5 bath w/ all the "I wants". Kitchen has huge island w/ sink, 6 S/S built-in appls, granite countertops, stone flrs. Bdrm level laundry, hrdwd thruout, marble, granite & glass in bathrms. Text:T672118



SOUTH OF LAKESHORE

\$2,375,000 Over 6,200 sf of luxury living. Custom masterpiece, 4+1 bdrm, 4.5 bath w/ hrdwd & radiant htd limestone flrs, granite, Wenge wood kit cabinets, gym, home theatre, hot tub & gas fire pit. TEXT: T191330

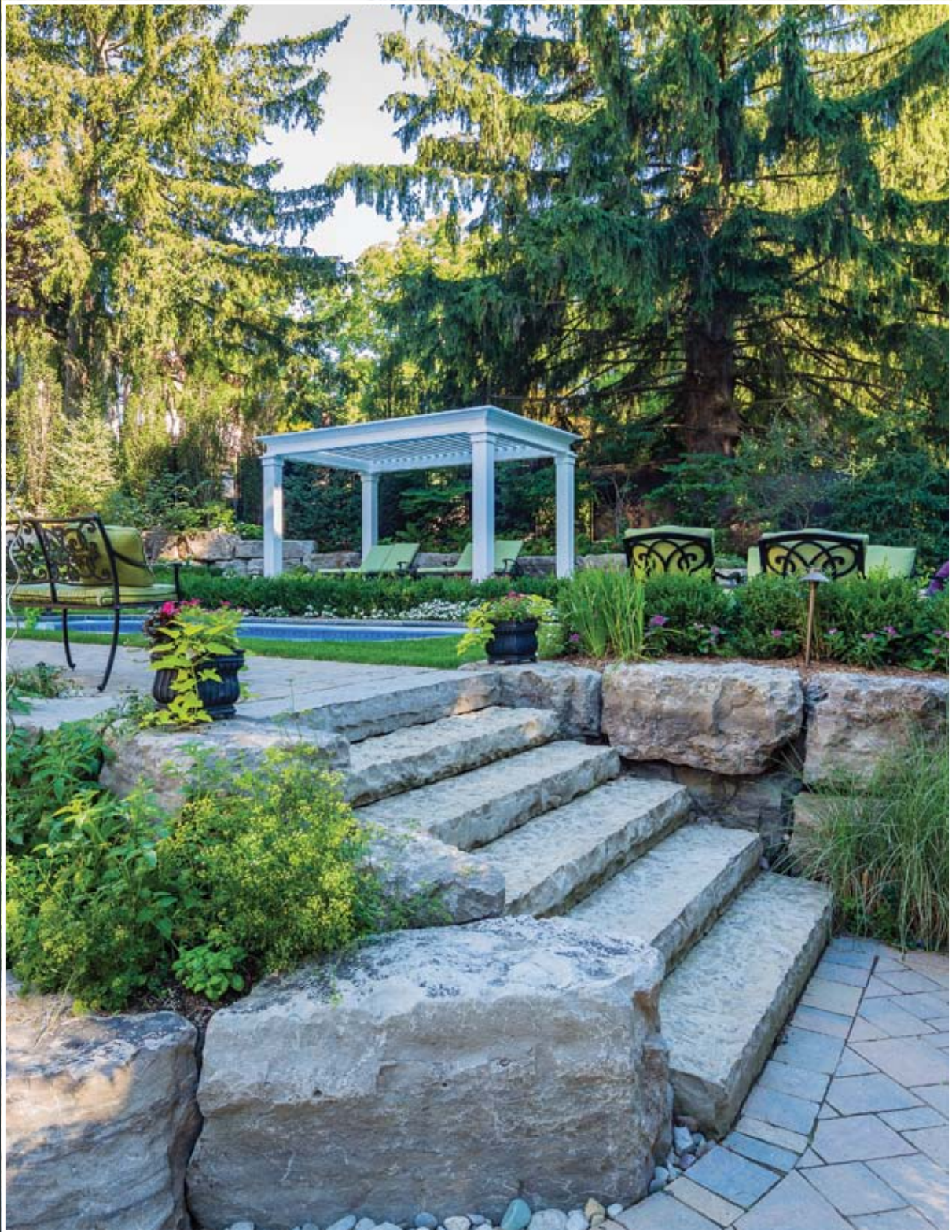


STUNNING LAKESHORE ESTATE

\$2,600,000 Architecturally dramatic facade, elegant landscaping, stately entrance & meticulous detail. High ceilings & magnificent hardwood floors abound. Masterfully designed by BREJNIK FINE HOMES.

m i c h a e l B R E J N I K . c a

LANDSCAPE DESIGN FOR OUTDOOR LIVING



1440 Hurontario Street
Mississauga, Canada
L5G 3H4
Tel 905 274 0005
design@uncommonground.ca
www.uncommonground.ca



P A R K Y N *PD* D E S I G N

FULL SCOPE INTERIOR DESIGN SERVICES

SPACE PLANNING • KITCHEN & BATH DESIGNS • CEILING & LIGHTING • TILE & FLOOR FINISHES • FURNITURE • WINDOW & WALL TREATMENTS

1440 HURONTARIO STREET, SUITE 100, MISSISSAUGA, ON L5G 3H4
TEL: 905.271.2021 • WWW.PARKYNDESIGN.COM



© 2012 Schonbek Worldwide Lighting Inc.



SCHONBEK®

IT'S A SCHONBEK. THERE FOR GENERATIONS.

Since 1870, Schonbek chandeliers have brought life to light. A heritage of premium quality and timeless style ensures that every original Schonbek chandelier will be a cherished object today, and for generations to come.

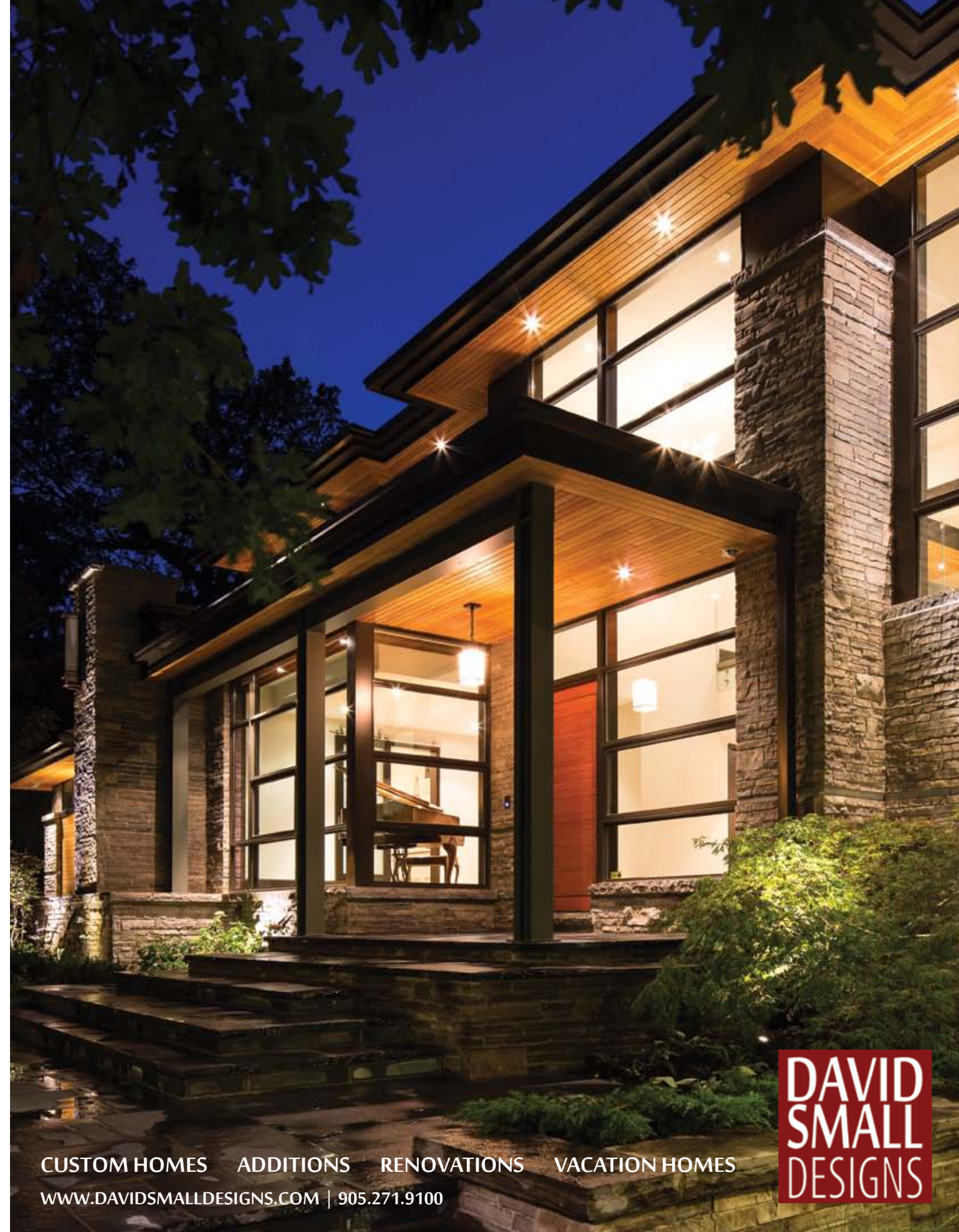
NEW ORLEANS and other illuminating designs available for viewing at the showroom below and Schonbek.com. Schonbek® is a member of the Swarovski Company.



The soul of the French Quarter thrives in New Orleans, a lavishly bejeweled baroque luminaire. An opulent display of crystal, complimented by a hand-cut crystal column and ornate framework, makes this chandelier a sight to behold.

Gerrie Lighting Studio
DIVISION OF GERRIE

355 Iroquois Shore Road
Oakville, Ontario L6H 1M3
905.845.2461 gls@gerrie.com
www.gerrielightingstudio.ca



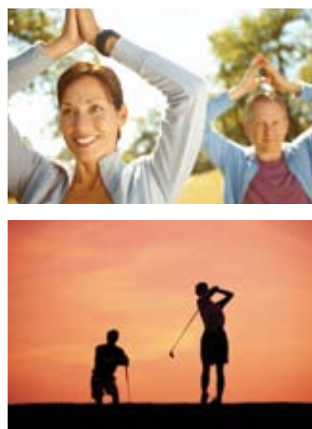
CUSTOM HOMES ADDITIONS RENOVATIONS VACATION HOMES

WWW.DAVIDSMALLDESIGNS.COM | 905.271.9100

DAVID
SMALL
DESIGNS

...LIKE LIVING AT A LAKESIDE RESORT

Join us at Ridgeway's
FALL FLING
September 16th
1:00pm – 4:00pm



THE BEST OF LEISURE LIVING IN THE IDYLIC NIAGARA PENINSULA

Close to QEW and Buffalo International Airport

Great Walking Trails and Beautiful Beaches

Golf Galore

Exclusive 9,000 sq. ft. Club House

Entertainment at the Shaw Festival and Fine Dining at Wineries

Peaceful and Serene

TOWNHOMES & SINGLE DETACHED BUNGALOWS PRICED FROM THE MID \$300s

ridgewaybythelake.com • 1.866.422.6610

SALES OFFICE HOURS: Now Open Sat. to Thurs. 12pm to 5pm *Friday by appointment



Take QEW to Fort Erie, Exit #16 Sodom Rd., West on Sodom Rd. to Hwy. #3, left on Hwy. #3 to Ridge Rd., right on Ridge Rd., through the Town of Ridgeway to Thunder Bay Rd., turn left on Thunder Bay Rd., past Prospect Road, first right on Sunrise Court, then first right onto Driftwood Trail. Sales Office is located at 40 Driftwood Trail.



SECTIONALS MADE TO FIT YOUR ROOM



🇨🇦 Made in Canada

HUNDREDS OF FABRICS TO CHOOSE FROM
OVER 10 STYLES ON DISPLAY

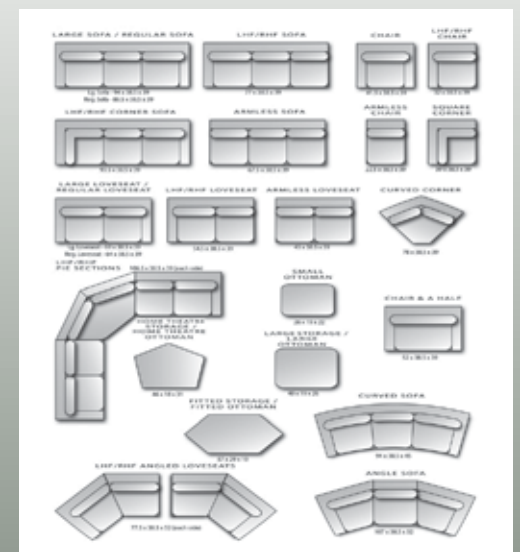
• SOFAS • LEATHER • SOLID WOOD BEDROOM & DINING SUITES • BAR STOOLS & MORE

JOSHUA CREEK TRADING
FURNITURE
& HOME DECOR

1029 SPEERS RD, OAKVILLE (SPEERS & 4TH LINE)

905.842.3739

www.JOSHUACREEKFURNITURE.COM



Receive our 90 page catalogue for free
call **905.851.7089** or online at
www.stone4homes.com/ourhouse



www.stone4homes.com

We are a Canadian based company and became industry leaders in North America by our ability to respond to virtually all consumer demands. We offer an affordable and fully versatile standard line of cast stone mantels and kitchen hoods that can be adjusted or modified as required. We can help by providing unique custom-made, "one of a kind" pieces. Our skilled and dedicated artisans are always more than willing to collaborate to create that timeless unique design.

Come and visit our exquisite showroom with
more than 30 Mantels and Kitchen Hoods on display

905.851.7089 Jevlan Drive, 260 - Unit 3
Woodbridge, ON L4L 8B1



ourhomes
STYLE • COMFORT • IDEAS • REAL ESTATE

PUBLISHER RUSSELL STREET MEDIA INC.

SHANNON MACPHERSON
shannon@ourhomesmagazine.com

OUR HOMES MEDIA GROUP INC:

EDITOR-IN-CHIEF GEORGETTE MCCULLOCH
editor@ourhomesmagazine.com

MANAGING EDITOR GINA MAKKAR
gina@ourhomesmagazine.com

ART DIRECTOR TARA CHATTELL
tara@ourhomesmagazine.com

ASSOCIATE ART DIRECTOR SHEILA BRITTON
sheila@ourhomesmagazine.com

PRODUCTION DIRECTOR LYNN DERRICK
lynn@ourhomesmagazine.com

PRODUCTION MANAGER ABBY REYNOLDS
abby@ourhomesmagazine.com

WEB EDITOR SHELBY HILSON
shelby@ourhomesmagazine.com

PRESIDENT DAVID LOOPSTRA

CONTRIBUTORS

Teresa Baerg, Sheila Britton, Kristin Fitzgerald-Zita,
Jason Hartog, Gina Makkar, Stephanie Redmond, Terry Smith,
Joyce Turner-Gionet, Tonia Wilson

MARKETING & ADVERTISING SALES

For Advertising or General Inquiries
SHANNON MACPHERSON 289.242.5599
shannon@ourhomesmagazine.com

OUR HOMES™ is a registered trademark of
OUR HOMES MEDIA GROUP INC.

OUR HOMES™ Oakville & Burlington is published four times a year by
Russell Street Media Inc. under the license of OUR HOMES MEDIA GROUP INC.

ourhomes
OUR HOMES MEDIA GROUP INC.

OUR HOMES™ is distributed to residents of Oakville & Burlington via direct mail.

Copies of OUR HOMES™ are available for free pick up at
high traffic locations throughout the region. OUR HOMES™ is distributed
to select business leaders via direct mail.

Advertisements and the content, including photos, of advertisements published within OUR HOMES magazine
are supplied solely by the advertiser and neither the publisher nor OUR HOMES Media Group Inc accept
responsibility for opinions expressed in advertisements or for copyright issues with regards to photos, advertising
copy and advertisements, nor shall they be held liable thereby. By act of reading this publication, all advertisers
and readers agree to indemnify and hold harmless both OUR HOMES Media Group Inc., and the publisher thereby.
Copyright ©2012 OUR HOMES MEDIA GROUP INC. All rights reserved. Reproduction without permission is prohibited.

Please send all letters and/or feedback to OUR HOMES™ Magazine,
11 Russell Street, Collingwood, Ontario L9Y 3Z1
Or email us at editor@ourhomesmagazine.com. All letters received
are subject to editing for grammar and length.
If undelivered, return to above address.

For franchise inquiries please visit

www.ourhomesmagazine.com

Or call: Suzanne Strong at 519.538.4528

e-mail to franchise@ourhomesmagazine.com



INTERIOR DESIGN AND FINE CUSTOM CABINETRY



INTERIOR works inc.

3100 Harvester Road Unit #2
Burlington, Ontario
905.336.0244 • www.interiorworks.ca



untouchable



Honeywell's LYNX Touch does it all.
The dynamic, lifestyle-enhancing
system lets you control your
security system, thermostats,
lighting, door locks and more—all

from one brilliant, full-colour 4.7" touchscreen. It can
even keep you connected to your family and home
whether you're across the street or across the world.
Enjoy peace of mind 24 hours a day, seven days a
week with central station monitoring.

No other system can touch it!

Honeywell



SERVNET SOLUTIONS
Security Solutions for a Digital World

For more information, please call Servnet Solutions at
905-486-0200 or **647-205-3384** or visit
www.servnetcctv.com. Contact us via email at
sales@servnetcctv.com

© 2012 Honeywell International Inc. All rights reserved.



SMITH & COMPANY

TIMELESS HOMES

- DESIGN/BUILD IN A CLASSIC STYLE
- ARCHITECTURAL INTEGRITY
- PASSIONATE ATTENTION TO DETAIL

647.405.8057
tjsmith@cogeco.ca



TERRY SMITH
SALES REPRESENTATIVE



**Coveted
Old Oakville.**

\$3,200,000

One of a kind in-town mini-estate. Huge lot. Fully renovated and restored in 2005. Character/scale ++. Exquisite finishes. One block to shops, two blocks to the lake. Approximately 3700 square feet. For demanding buyers who want high-end in-town living without compromise. Please call for details!

**SPECIALIZING IN DOWNTOWN, SOUTHEAST
AND SOUTHWEST OAKVILLE**

Unlocking the value in your home.
c: 647.405.8057 | e: tjsmith@cogeco.ca

RE/MAX Aboutowne Realty Corp., Brokerage
t: 905.388.9000
f: 905.842.7010



editor's note



HAPPY ANNIVERSARY TO US!

It's been a great year for OUR HOMES Oakville and Burlington. We're fortunate to have a region full of talented designers, builders, and business owners who have embraced OUR HOMES and played an instrumental part in adorning the magazine with a style and beauty that leaps off the pages.

We've graced the hallways of many beautiful homes thanks to the open doors of our welcoming homeowners. You have my gratitude. The effect of allowing us to peek into your windows lasts long after we're gone. In fact, social gatherings often have me reaching for past issues to once again point out a fabulous chair or distinctive detail from one of our homes.

In touring so many beautiful abodes, I've learned it's about having a keen eye to put the right details together for spectacular results. Recently, I mustered up the courage to throw some colour into my space, and voila! I finally caught a glimpse of how amazing I always knew it could be.

It's great when things come together, and come together they have for the homes in this issue. Designer Tracy Ray helped the Walton family achieve a relaxed charm and sophistication with an extensive reno on their Oakville home.

If you're looking for that special something to pull your space together, check out our Comfort Zone on Springridge Farm. Their 1880s barn-turned-gift shop is brimming with unique and beautiful pieces. With the annual Fall Festival around the corner, there's something for everyone in the family.

As always, our sensational Style Picks are sure to add a little heat to any space as the temperatures cool. Sink into the cuddle chair from In House or warm your walls with Farrow & Ball paint from Anderson Carpet and Home.

Look forward to showcasing more homes and products that will help make your space come together, one detail at a time.

Enjoy!

Gina Makkar

Gina Makkar, Managing Editor
gina@ourhomesmagazine.com

Follow us locally @OurHomesOakBurl
and nationally @OurHomesMag



BRIARWOOD HOMES

**Decorated
MODELS**



**Now Available at Collingwood's Best Community
- a Limited Release of New Attached Singles***

\$289,990.
from

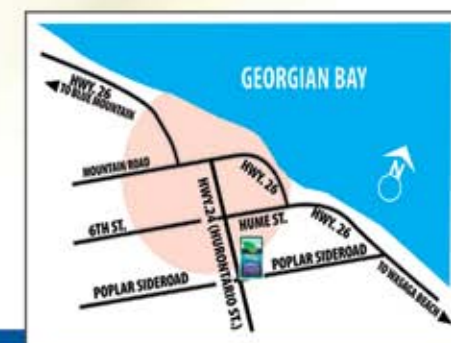
Perfectly located on the Collingwood Trail. Hike, bike or sail, enjoy a round of golf, ski the slopes, shop and dine to your heart's content. It's all right here!

Monday to Wednesday
& Holidays by Appointment
Thursday to Sunday 12 to 5 PM

1-888 257-1999
705 293-3311
* Attached at Garage Only

Prices & Specifications are Subject to Change without Notice. Artist Concept. E.&O.E.

briarwoodhomes.ca



contents

fall



ON THE COVER

Home By Design.
Story, page 20.
Photography by
Jason Hartog.

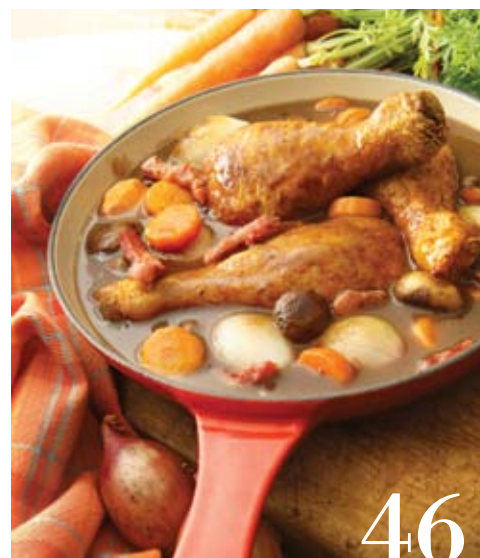


departments

EDITOR'S NOTE	12
ADVICE	16
Building A Beautiful Bathroom	
STYLE PICKS	18
Favourite Fall Finds	
COMFORT ZONE	30
Home On The Farm	
PEOPLE	32
Meet The Pros	
HOME RESOURCE DIRECTORY	44
FINISHING TOUCH	46
Cooking With Wine And Beer	

features

FEATURE HOME	20
Unique Ideas By Design	
REAL ESTATE	28
Priced To Sell	
HOME & BUILDER	36
Fabulous DIY	



CHOSEN
"BEST OF THE BEST 2012"
BY THE ROBB REPORT MAGAZINE



TORONTO | MISSISSAUGA/OAKVILLE
1020 Lawrence Ave. W. | 3050 Vega Blvd.
(west of Dufferin) | (Dundas and 403)
Tel: 416.256.2553 | Tel: 905.820.4841

www.cameokitchens.com

Cameo Kitchens
AND FINE CABINETRY



M I C H A E L
D E J O N G
H O M E S

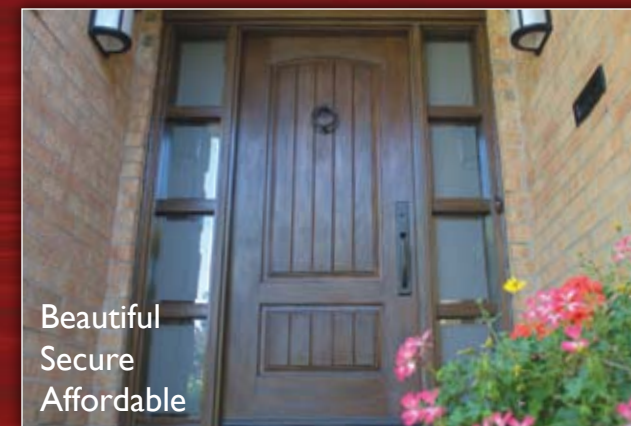
VIEW OUR ONLINE PORTFOLIO
www.dejonghomes.com 905.332.6711

BATHROOM *renovation*

HINT: Don't forget about accessories to complete your look:



Creating a more contemporary look comes down to simplifying the aesthetic but the key is to do it well. Good quality finishing and well thought-out details make or break a project. So, can you re-use that existing vanity to create your modern look? Likely yes, but you better start planning! **OH**



Bathroom Design & Renovation Professionals



often imitated
never duplicated



Opal
Baths and
Design

A Trusted Name in Service Since 1960

4104 Fairview St., Burlington
905.639.0500
www.opalbaths.com

“Everyone must take time to sit and watch the leaves turn.”
— Elizabeth Lawrence

This autumn, our retailers offer a bounty of elements to enhance your home. Fall in love with some of our favourite finds.

PHOTOGRAPHY BY JASON HARTOG



1

STATEMENTS WINDOWS AND DOORS

(1) Fibreglass Door

Create a memorable first impression with a mahogany grain, mocha-finish fibreglass door from the JELD-WEN Estate Collection. Made to stand up to any climate, the architecturally inspired designs are available in a wide variety of options to customize the door of your dreams.

407 Speers Rd. Unit C

Oakville

905.845.4195

www.statementsdefine.com

ANDERSON CARPET AND HOME

(2) Farrow & Ball Paint

Whether you are creating a subtle backdrop or making a bold statement, high quality pigments and resins create a depth and beauty that is uniquely Farrow & Ball. Choose from a range of eco-friendly water-based hues for a fresh new look.

686 Guelph Line

Burlington

905.639.0666

www.andersoncarpetandhome.com



2



3

JOSHUA CREEK FURNITURE & HOME DECOR

(3) Bar Stool

Add a little flair with a beautiful Canadian-made custom bar stool. Available in counter or bar height, it comes in a variety of upholstery and finishes for a truly unique fit for both traditional and contemporary spaces.

1029 Speers Rd.

Oakville

905.842.3739

www.joshuacreekfurniture.com



4

IN HOUSE

(4) Cuddle Chair

Snuggle up in a unique, upholstered accent chair. Contemporary and stylish, the durable, easy-to-clean polyester and swivel feature provide hours of effortless comfort.

481 John St.

Burlington

905.637.0823

www.inhouseetc.ca

THE FEATHERED BED

(5) Lamp

Create a dramatic focal point with an expertly crafted table lamp. Elegant curves and a distressed finish add visual interest, while the square fabric shade bathes a living space with soft, warm light.

1463 Ontario St.

Burlington

905.681.2400

www.thefeatheredbed.ca



5



6

ELIZABETH INTERIORS

(6) Side Table

Transform your space with a little vintage appeal. The smooth marble top, carved details and silver finish of this side table add a glimmer of sophistication. Gilded gold accents and French provincial-style drawer pulls add whimsy and charm.

409 Brant St.

Burlington

905.333.6670

www.elizabethinteriors.com OH

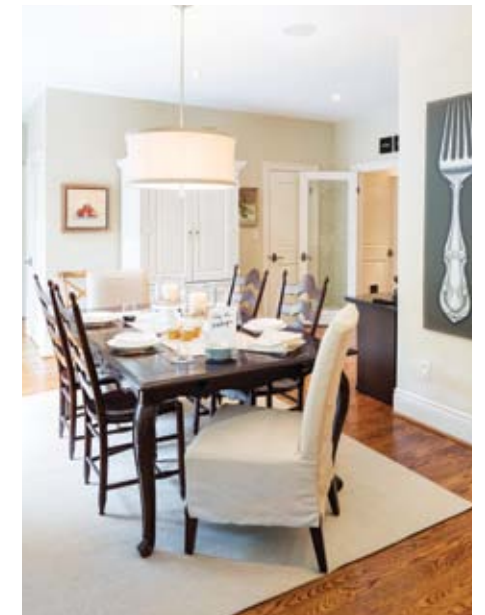
RAVISHING *Reno*

BY JOYCE TURNER-GIONET
PHOTOGRAPHY BY JASON HARTOG

A vibrant zebra print runner from Anderson Carpet and Home adds a subtle graphic touch and makes the staircase come alive. **OPPOSITE, TOP LEFT:** The kitchen includes a convenient nook with storage for glassware and extra counter space. **TOP RIGHT:** A more casual kitchen dining area is anchored by a beautifully refinished walnut-coloured table and a creamy fabric drum light fixture. **BOTTOM LEFT:** A perfect hostess, Fulvia Walton's table settings include personalized place cards to add a whimsical touch. **BOTTOM CENTRE:** Beautiful details in the trim work frame each room and add architectural detail and character. **BOTTOM RIGHT:** Pale blue wallpaper in the powder room creates a soothing, spa-like feeling.



Each year, *MoneySense* magazine highlights the top places to live in Canada, and Oakville consistently makes the grade. For almost 200 years, the town has been a drawing card for couples like Fulvia and Roland Walton who bought their 3,700 sq. ft. Oakville home 15 years ago.



They were captivated by the quiet streets, proximity to Toronto, the lake, and a rare American chestnut tree at this delightful place to call home.

Recently, renovations to the kitchen, great room, living and dining rooms were done. The couple briefly contemplated moving, but with the home nestled on an idyllic lot, they decided to let the reno work its magic. Although Fulvia has superb design sense, she wanted an expert onboard. After viewing the home of designer Tracy Ray, owner of **Unique Ideas**, Fulvia was sold. "I loved Tracy's style from the get-go," Fulvia says. "It's in synch with mine – clean lines, symmetry, interspersed drama, with the onus on comfort, and she really listened to what we wanted. We didn't want a design that was too precious, we wanted to live in the house, not tiptoe around. Tracy understood this."

As if to make the point, her small dog suddenly leapt onto a gorgeous Bergère armchair. "He's not usually allowed to do that, but you get the picture," Fulvia smiles. To oversee the reno, Tracy brought in **Stuart Riley** of **BRS Construction** (partner with HGTV's Bryan Bacumler). Stuart is

known for his ability to combine classical and contemporary architecture for a holistic approach with timeless appeal.

"It's a north-facing house, so Fulvia and Roland wanted to bring more natural light into the main living areas," says Tracy. Working from her design, Stuart tackled structural changes first. Across the main floor, raised solid panels were added to walls to create drama. Square-cut doorways were arched and made deeper to let in light. Beautiful trim work, crown moulding and taller baseboards by **Jay Hackett** now run throughout. In the dining room, a stunning plaster-coffered ceiling replaced the original flat ceiling. The white trim and zen-like palette on the walls allows architectural details to shine. The original oak floors were refinished by **Oakwood Floors** in a natural stain. "When working within the confines of an original build, the challenge in a reno is to maintain a harmonious balance between what's kept and what's changing; the structural mathematics must result in a seamless, aesthetically pleasing outcome," says Stuart. *Continued on page 22*



The stunning kitchen by Top Notch Cabinets blends fresh white cabinets with warm walnut tones. The large island in is the perfect place for Fulvia to whip up culinary creations, and the door connecting to the dining room maintains easy flow.

In the new kitchen, the couple wanted a space for optimum workflow and fluid entertaining. With a great reputation, Oakville's **Top Notch Cabinets** was a perfect fit for the reno. "Fulvia is a serious cook who would one day like to host a children's cooking school in-house, so a durable, low-maintenance design was essential," said Tracy. Two windows frame the cooking area and bring symmetry and light. The colour flecks in the white Italian Statuario marble backsplash by **Stone Edge Marble and Granite** are picked up in the beige striations of the creamy Buttermilk Caesarstone island top.

Bevelled white shaker cabinets are dressed with satin-nickel knobs and

pulls. An open upper section of cabinets showcases celeste blue accessories – a jewel-coloured jolt in a tranquil kitchen oasis. The generous eating area with its tall windows is an ideal spot for relaxed family meals. The kitchen table was refinished in walnut. Easy-care slipcovers were added to the chairs. "With kids and pets, slipcovers are easy and I told Tracy we're too busy to be too fussy," Fulvia laughs. Valerie Thompson of Top Notch Cabinets describes the kitchen as a transitional space marrying traditional elements such as stacked cabinets and turned legs on the island with the contemporary appeal of slab-door cabinets and an oversized stainless hood surrounded with a more traditional wood surround. *Continued on page 24*



FARROW & BALL
Manufacturers of Traditional Papers and Paint

ANDERSON'S – Your design partner for
Furniture, Carpet & Area Rugs, Reupholstering, Drapery, Paint and Wallpaper

**Carpet, Furniture and Rugs
and now offering Farrow & Ball**

Come in to see this beautiful paint in our room settings
686 Guelph Line, Burlington • 905-639-0666
andersoncarpetandhome.com

Anderson's
your design partner

est. 1964



In the great room off the kitchen, full-length windows tower and spill sunlight into the casual but chic interior. A whimsical twig base supports a glass-top table from **Cocoon Furnishings Inc.**, and an oversized leather ottoman was fitted with a celeste blue tray top. Dated millwork and trim were replaced with more modern lines and floor-to-ceiling pillars were converted from round to square. New hardwood was stained to match.

The living room reno transformed a dark, relatively unused space to a light, airy, room that tempts one to linger. "We lightened the walls with warm greys, added patterned fabrics, pops of cheery yellow and reframed the couple's artwork to suit the updated look," says Tracy. Custom mirrors from **Continental Mirror & Glass Co.** flank the updated gas fireplace. A freestanding bookshelf was built in and painted dark grey for contrast. Two existing Bergere chairs were reupholstered in a striking floral fabric. A textured wool area rug from **Anderson Carpet and Home** ties the look together. *Continued on page 26*

LEFT: Yellow accents add a little verve to the lovely greys in the living room. Built-in shelving is a showcase for beautiful books. **BELOW:** Floor-to-ceiling windows veiled with soft drapery blend effortlessly into the soothing neutral palette in the cosy family room.



casualife
OUTDOOR LIVING

CHOOSE FROM THE LARGEST SELECTION OF STYLES AT END-OF-SEASON PRICING

LIKE US ON **FACEBOOK** AND RECEIVE AN **ADDITIONAL 5% OFF** THE LOWEST TICKETED PRICE
facebook.com/CasualifeOutdoorLiving

100 LAKESHORE ROAD EAST - MISSISSAUGA, ON
905.990.5433 - (in the heart of Port Credit)

6 SHIELDS COURT - MARKHAM, ON
UNDER 30 MINUTES FROM DOWNTOWN
905.475.8353 - (North of Steeles off Woodbine Ave)

www.casualife.ca

New Arrivals Daily

in house etc.
Furniture Accessories

home garden entertaining

481 JOHN ST. • 905.637.0823 | 482 JOHN ST. • 905.637.3600

www.inhouseetc.ca

HOURS: Tuesday-Saturday, 10-5 • Sunday-Monday, 12-4

vinylbilt
BILT BETTER

ECLIPSE™
SHUTTERS

***FREE TRIP FOR 2**
with every qualifying purchase

fasada
HOME REMODELLING CO.

Corner Bronte & Dundas
Oakville 905-827-3331

fasada.ca

Corner Walkers & Mainway
Burlington 905-336-3339

**WINDOWS
DOORS
SHUTTERS
BLINDS**

we make you look good...inside and out!

f t y

feature

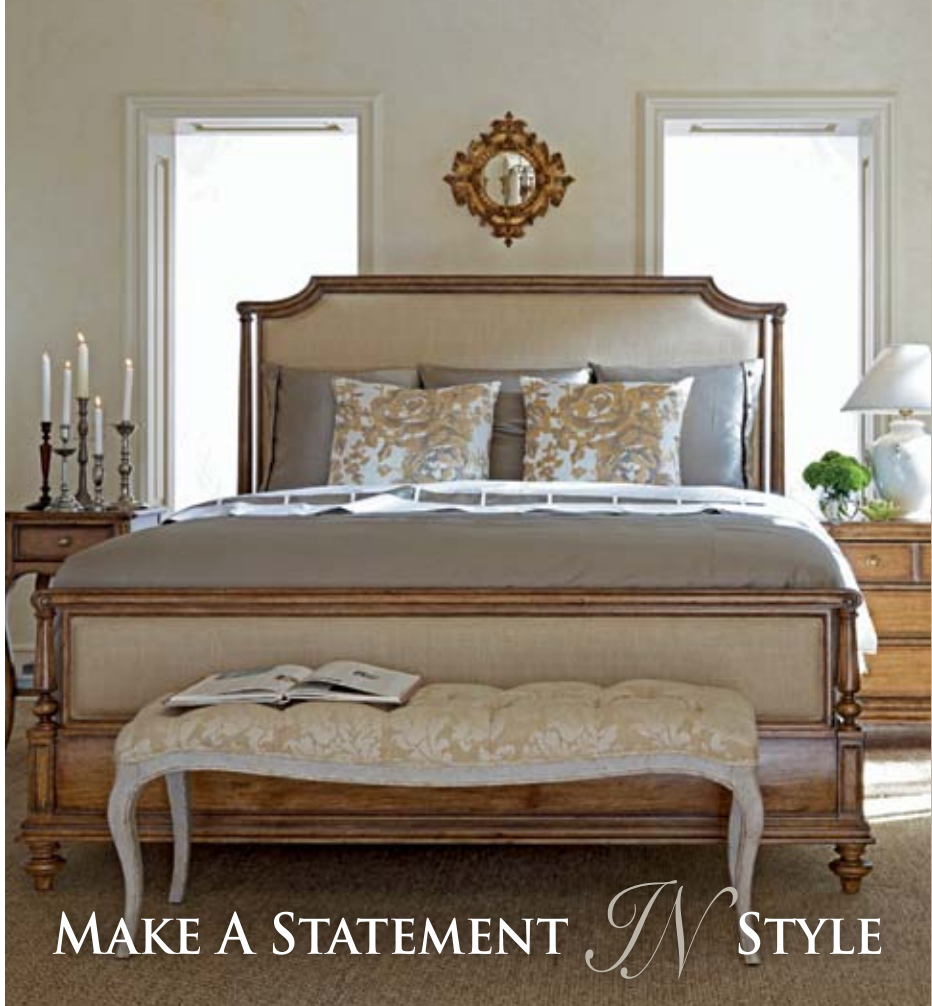


LEFT: The dramatic waffle ceiling and intricate wall mouldings create a beautiful backdrop for elegant evening entertaining. **BELOW:** The master bath is bright and fresh with large windows and water blue accents. **BOTTOM:** French doors in the master bedroom open to a beautiful view of the backyard. Soft fabrics create a tranquil space.



Soft grey dining room walls are inviting and sophisticated. A custom dining table made by Cocoon Furnishings anchors the room. Upholstered chairs complement the table. Polished nickel accents on the wall sconces, bar cart, trays, hardware and the chandelier are elegant room jewelry.

From day one, Tracy's style resonated with Fulvia and Roland, creating a successful reno. In some ways a designer has to be a chameleon, adapting to and anticipating the desires of a client without imposing her own personal style onto the work. "The most important part of my job is listening, balancing what I know about good design with what my clients need to make them happy," says Tracy. Fulvia and Roland can certainly be classified as happy clients. **OH**



MAKE A STATEMENT *IN* STYLE

ELIZABETH
INTERIORS

ELIZABETH INTERIORS
32,000 SQ. FT. SHOWROOM
409 BRANT ST., BURLINGTON
905.333.6670
1.800.846.7845



THOMASVILLE BURLINGTON
18,000 SQ. FT. SHOWROOM
2269 FAIRVIEW ST., BURLINGTON
905.631.6000



MONARCH

MOVEABLE GLASS WALLS

Live Life With Distinction

CLOSED



OPEN



132 COMMERCE PARK DR. BARRIE, ON (705) 735-0072 www.MMGW.ca





LELA'S

FINE FURNITURE

SERVING BURLINGTON & SURROUNDING AREA FOR 29 YEARS

GREAT SELECTION OF CANADIAN MADE FURNITURE

Steven & Chris · Kimberly Seldon Collection
Future Chair · Perri Fine · Deco Rest · G Romano
Brentwood · Dining Rooms By Bermex

466 Guelph Line, Burlington (New St. & Guelph Line)
Mon-Wed. 10-6 · Thurs.-Fri. 10-7 · Sat. 10-5 · Sun. 12-4
905-632-8354 · lelasfinefurniture.com

real estate

THE PRICE IS RIGHT

BY TERRY SMITH // ILLUSTRATION BY SHEILA BRITTON

When preparing to sell your home, there are several factors that need attention to ensure the best price. These can include painting, cleaning, repairing any damage; maybe even staging. These all require a realistic assessment of your home from the buyer's perspective. We all seem to be adept at this part of the selling process, to greater or lesser degrees. Many of us have seen enough HGTV shows to "train us" to see our home with a more critical eye and accept that maybe it could use a bit of a lift!

But when setting the price, realism sometimes goes out the window. This is partly because we live in a fairly robust real estate market which, over time, can lead to the expectation of unrealistic price inflation. And for many of us, our home is our biggest asset, so our perception of price is charged with emotion. What we wish for can overpower our ability to judge the truth of our home's value. "The house down the street sold for X-amount of dollars, and our house is much better than that house..." We've all said it. But is it true?

Maybe not. Yet setting a realistic listing price is probably the most important factor in getting the best price for your home. This might seem counter-intuitive. After all, pricing high feels good. It helps reinforce our wish in terms of the value of our home. Just seeing that asking price gives us a sense of wellbeing. But alas, this is usually an illusion - an exercise in short-term pleasure for long-term pain. It usually ends in selling for less than if the starting price was more realistic.

**DON'T FALL INTO THE TRAP.
SET THE RIGHT PRICE FROM THE START!**



How can this be, you say? After all, if the market tells us the price is too high, we can always drop it after awhile. But if we start lower, we can never raise the price later! We don't want to leave money on the table. This logic is tempting, but is usually flawed and can lead to trouble.

At any given time, there is a certain pool of potential buyers actively looking for a home like yours. Some are working with an agent who keeps them informed about new listings on a daily basis, some track the local Real Estate section, others check MLS online regularly. All these buyers will see your listing within the first few weeks or at most within 30 to 60 days. If it is priced realistically, these buyers will seriously consider your home during this period. You could have the potential for interest from multiple buyers. But if you are priced too high, this pool of buyers will largely ignore your home and the first month or two will pass with no buyers stepping forward. Many will have gone on to buy other homes, while perhaps a few might be on the sidelines waiting for your price to drop. Not good.

Then what happens? Unless you want to deal with one of the price shoppers on the sidelines, you will have to wait for new buyers to enter the market. This is a process that by definition happens gradually, one buyer at a time. You will not have the benefit of the large pool of buyers you had when you first listed. The buzz of a new listing and the attention it creates will be gone. So the wait might be long. Notice how long some For Sale signs stay up? And the longer you're on the market, the more chance your listing will be perceived as "stale" and you might then need to make a price reduction to coax some interest.

Don't fall into the trap. Set the right price from the start! Ask your agent to give you a detailed and realistic assessment of where your home should be priced versus comparable properties, not just what they know you want to hear. Then resist the temptation to price higher. You'll be glad you did. Price it right from the start and you may have a little short-term emotional pain but long-term pleasure in a higher SOLD price! **OH**

kitchentune·up®

Hate your kitchen?

We have a remodeling option for every budget.

Renew • Reface • Restyle • Custom New Cabinets
Thousands of door styles & finishes to choose from.

or **SimplyReDoor** **NEW**
The do-it-yourself remodelling option!

Free consultation & estimate 905.637.3331

Visit our showroom Every Kitchen Tune-Up franchise is locally owned and operated.
3480 Fairview St., Burlington Mon-Fri 10-5, Sat 11-3

Design Tool - Free on website KitchenTuneUp.com

HOME Sweet HOME

Courtesy of Kravet

Make your home *YOURS* with custom upholstery and drapery at affordable prices from Trading Places.

Trading Places Home Decor
You don't have to be a Millionaire to decorate like one.

427 Speers Rd., Unit 7, Oakville, Ontario
www.tradingplacescanada.com (905) 815-1949



HOME GROWN

BY TERESA BAERG
PHOTOGRAPHY BY JASON HARTOG



THE PLACE: Nestled against the Niagara Escarpment, **Springridge Farm** has been in the Hughes family since 1960. Although they originally harvested sour cherries, farmers John and Laura began to grow strawberries in 1979 and opened their doors to the public. Today, in their 1880s barn, they sell a wide assortment of items,

from home décor and fashion pieces to cookbooks and artwork. The bakery serves lunch and baked goods and is famous for mouthwatering gourmet preserves. Jams, pickles, chutneys, mustards, honey and more are all prepared from the harvest.

THE STYLE: Home décor items in the gift shop are classic yet unique pieces that Laura believes will remain in style for years. "Customers are looking for inexpensive ways to create an atmosphere and decorate their homes," says Laura. Stoneware made by local artisans, such as Pavlo Pottery in Rockton and Hilborn Pottery in Cambridge add character to a space. "We've always felt when we've done something, we wanted to be able to do our very best at it," says Laura of the pies and pastries baked daily, using recipes handed down by Laura's mother-in-law 30 years ago.



WHAT'S HOT: Springridge loves to romance the seasons. Families can experience the farm, enjoy lunch with a view and purchase a variety of seasonal treats like strawberry pie in spring and pumpkin pie in the fall. To celebrate the Queen's Jubilee, Springridge offered its wildly popular Diamond Jubilee Jam. Homemade granola is a bestseller, and cookbook author signings are crowd-pleasing events. John and Laura continually seek to reinvent the farm by listening to what customers want.

FAVOURITES: Their greatest pleasure is watching three generations of family come together and enjoy the farm. John says

the farm gives the kids an awareness of where their food comes from. They love to see someone find a perfect gift, whether it's a jar of jam, a basket of freshly picked strawberries, a lovely piece of jewelry, or artwork that Laura has personally selected. This fall, the Harvest Festival runs every weekend from Sept. 22 to Oct. 28, offering a cornucopia of autumn delights.

WHERE: 7256 Bell School Line, Milton, 905.878.4908

www.springridgefarm.com OH



people FINE finishes

BY GINA MAKKAR
PHOTOGRAPHY BY JASON HARTOG

Like a blank canvas that turns into a masterpiece, details bring a room to life. Fabric, colour, texture and lighting create an atmosphere and make a house a home. Let this season's local talent inspire you and bring your vision to life, both inside and out.



▲ Stan Jablonski and Carrie Parris Budget Blinds

WHAT'S HOT IN WINDOW COVERINGS? Shutters are always in style. Solar and roller shades maintain a simple yet functional look that blocks UV rays and reduces solar heat gain. Draperies with grommets are simple and effective. Floor-length draperies graze the floor like a well-tailored pair of trousers. Fun patterns create a sense of whimsy.

WHY ARE WINDOW COVERINGS IMPORTANT? In addition to privacy and light control, they provide energy efficiency and add an element of design. They create the personal statement that makes a house a home.

ADVICE: Identify your expectations, research your options, know your style, and know your dealer. Due diligence on price, quality and service will give you the best value for your dollar.

◀ Simone Bii Hearty Furniture

WHAT DOES HEARTY OFFER? Hearty offers a beautiful selection of custom solid wood furniture, including tables, chairs, wall units and bedroom suites.

WHY IS HEARTY A GREAT PLACE TO SHOP? We believe furniture should fit the style of a home and reflect the owner's personal taste. At Hearty, we work with the customer's budget to design a unique custom piece of furniture without the custom price.

WHAT IS NEW AND EXCITING IN FURNITURE? Furniture today is multifunctional. We design pieces like wall units to look beautiful and tuck things away to create a tidy space with instant impact!

Continued on page 34



The years fly by, but love is eternal



The FTD®

Anniversary Bouquet

Every anniversary is important, from the first to the fiftieth. Honour each one with a gift of fresh flowers. This elegant bouquet of roses, larkspur, Stargazer lilies and carnations is the perfect way to celebrate a lasting love. We'll send them in a lovely cut glass vase along with your message of love. Call today and really make this anniversary one to remember.



Brant Florist

Send flowers the right way

905-639-7001 | www.brantflorist.com

You can own OUR HOMES too!



Be your own boss, put your network to work for you, provide the very best advertising solutions in your community, and build equity in your very own business.

Each regional OUR HOMES magazine features **local** content, **local** homes, **local** style, **local** builders, **local** trades, and **local** stores.

View any regional magazine at
www.ourhomesmagazine.com

Visit

www.magazinefranchise.ca
Click on franchise opportunities.
Or call **Suzanne Strong 519.538.4528**
franchise@ourhomesmagazine.com

Join our happy and successful team
and create maximum value
for your advertisers and readers.

ourhomes
Creating value, creating opportunities

Solid Maple, Walnut, Oak & Cherry Since 1981

HEARTY

Specializing in custom designs, builds, and finishes



Table and Chairs



Vanity



Buffet



Wall Unit



Bookcase



Design and function is important to us at Hearty Furniture!

This wall unit was designed to be perfectly symmetrical while being extremely functional for our client. One side houses a record player and the other cabinet stores a mini bar. Also floor standing speakers are hidden in the cabinetry for a cleaner look.

Give us a call to discuss what we can do for you!

PLEASE VISIT OUR NEW LOCATION

3300 Ridgeway Drive, Unit 6, Mississauga

(905) 569-7088

www.heartyfurniture.com

Mon-Fri 10-6 • Saturday 10-5 • Sunday by appointment

Gary van Eijk ► Uncommon Ground

WHAT SERVICES DOES UNCOMMON GROUND OFFER? We offer more than garden and landscape design. We guide you through every step of the process, from a three-dimensional concept and material selection to implementation. Uncommon Ground doesn't stop at a sketch.

WHAT SHOULD PEOPLE KNOW ABOUT LANDSCAPE DESIGN? Plants are only a part of landscape design. Patios, decks and pools impact the flow, use and maintenance of properties. Planning a landscape design early can save thousands of dollars during construction. Designing up to six months in advance can solve construction issues and help stay on budget.

WHAT MAKES A GREAT LANDSCAPE? It is not about how much, but how little is in a great landscape that makes a property look great and function well. It's an extension of the architecture and lifestyle of those who call it home.



◀ David Mackie and Vivien Calvank Gerrie Lighting Studio

WHAT IS NEW IN LIGHTING? Sustainable products, organic style lighting and LEDs continue to take the spotlight.

WHY IS GREAT LIGHTING IMPORTANT? Lighting can achieve many things in a space: function, drama, beauty and inspiration. It is important to layer light to achieve the desired effect by using task, accent, ambient and decorative lighting. The results can be amazing.

ADVICE: When lighting a variety of rooms and landscapes, consult a designer or lighting consultant who can assess your needs and help choose appropriate fixtures to suit your lifestyle and budget. **OH**

OUR HOMES SPECIAL ADVERTISING FEATURE

>> SOURCE IT

A MISCELLANY OF THE NEW, NEAT, UNIQUE,
AND FABULOUS IN THE REGION OF
OAKVILLE AND BURLINGTON

WHAT IS A PERSONAL CHEF?

Wouldn't it be nice to enjoy a freshly prepared meal in the comfort of your own home with your loved ones without having to do any of the work?

A Personal Chef prepares delicious food in your home and stores the meals in the refrigerator and/or freezer based upon your lifestyle needs. Craving some good old-fashioned comfort food, exotic cuisine, or gourmet entrées, customized menus let you savour the flavour of your choice any night of the week.

Struggling with special diets for family members? Regardless of your special diet, (Diabetes, Gluten-Free, Vegetarian, Dairy-free) Chef Pamela believes everyone deserves a little Cheferential Treatment with fully customized menus.

Who Uses a Personal Chef?

Busy Families: With the kids involved in numerous activities and a hectic work schedule let Cheferential Treatment provide you with the comfort and convenience of having home-cooked meals ready when you need them.

Executives: Working more than the standard 8 hr day, wouldn't it be nice to come home to an array of delectable entrées designed for you and your busy lifestyle? In addition to treating yourself right on a daily basis, Cheferential Treatment takes care of all your business entertaining needs.

289.259.6973, pamela@cheferentialtreatment.com

(Please see ad on page 41)



SERVNET SOLUTIONS

Did your child make it home from school? At Servnet Solutions, our goal is not to simply sell an alarm or CCTV system, it is to form a partnership with you, where electronics and humanity are more in sync.

Sitting in your office, you will know if your child arrived home or if your basement begins to flood.

Servnet Solutions provides not only high quality award winning equipment, but outstanding customer service.

BOSCH - High Quality Optics are Job #1

Award winning IP Digital Cameras and Digital Video Recording systems provide solid verifiable evidence.

HONEYWELL - Be there without having to be there

Advanced equipment technology such as ZWAVE: set schedules controlling anything from lighting, to thermostat settings and remote video monitoring with Total Connect 2.0.

CDVI - Extensive range of access control solutions

Including biometric access control - for apartment buildings, car parks, offices, government agencies, campuses, high-security environments (prisons, airports) and critical infrastructure.

COUNTERFORCE

Counterforce is a Canadian partnership of security professionals - the best in security equipment and service.

We want to be there supporting your initial setup and throughout the years leaving you happy, secure and brimming with peace of mind.

Office Tel: 905.486.0200

Mobile Tel: 647.205.3384

Email: sales@servnetcctv.com (Please see ad on page 11)



LOCATIONS IN:

OAKVILLE

407 Speers Rd, Unit C, Oakville
905.845.4195 | 1.888.444.5606

MARKHAM

2800 14th Ave., Unit 102, Markham
905.477-6361 | 1.888.404.4814

statementsdefine.com
statements-defineyourhome.blogspot.com



Let us help make your in-house entertainment

EASY TO USE!



CUSTOM AUDIO VIDEO DATA INTEGRATION

PHAND CORPORATION

Building or Renovating?

Make an appointment with our Design Centre.

www.phand.ca • 1.877.546.8540

house of dreams

BY KRISTIN FITZGERALD-ZITA // PHOTOGRAPHY BY JASON HARTOG

Nestled next to the magnificent Niagara Escarpment, Burlington's newest residential community of Alton Village is a beautiful neighbourhood with no shortage of curb appeal.

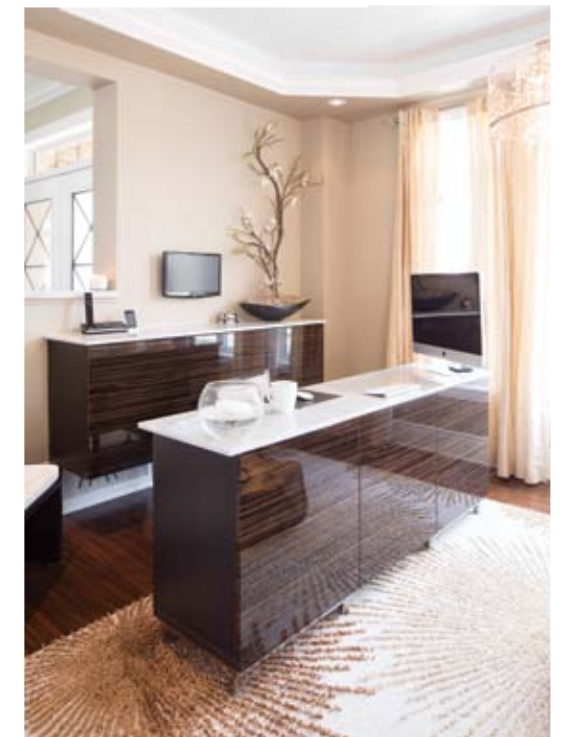
Designed with a focus on good urban planning and stunning streetscapes, Alton Village is a place where dreams can easily come true. Deep in the heart of the community on a lovely, quiet street is a house made of style, drama, warmth and, just maybe, a little bit of stardust.

Homeowners Michael and Raquel spent six months turning their 4,400 sq. ft. home into a one-of-a-kind wonderland, blending contemporary and traditional design to create a perfectly balanced fusion of style and functionality. The home was crafted by one of the leading homebuilders in the area, **Fernbrook Homes**. Michael and Raquel's companies **Meticulous.ca** and **CostaRei Designs** customized the interior and added personal elements to make the remarkable home even better.

From the moment you step off the stately wraparound porch and through the red-trimmed frosted glass doors, you're treated to a little bit of magic that sets the tone for the rest of the house. A wall of diagonally set mirror tiles plays with the light streaming in from two large front windows, reflecting back tantalizing hints of the impeccably appointed office and the cosy family room it faces.

The family room, Raquel's favourite spot in the house, boasts a custom-designed dove-grey couch made specifically to fit the space. Ten people can comfortably snuggle in to watch movies on the 100-inch automatic projection screen with built-in 7.1 surround sound that magically drops from behind a valance. Elegant cream and beige damask wallpaper on the room's feature wall is a bold but chic addition to the otherwise contemporary space that both softens and warms the room.

Dark chocolate, crosscut bamboo flooring provides a luxuriously rich path that runs throughout the house, pulling you across the foyer from the family room and into the eclectic office space. There, a decorative polished tree stump sits below a crystal-bedecked light fixture that drops from the centre of a dramatic coffered ceiling. The neutral walls and pale gold curtain panels provide the perfect backdrop for the drama created by the marble-topped dark lacquered desk and credenza. The homeowners designed both pieces. Metal and glistening chrome accents complete the contemporary workspace. *Continued on page 38*



OPPOSITE: The family room is rich with a myriad of soothing grey tones and textures. An oversized sectional provides plenty of space for the family to cosy in for movie night. **TOP:** Grey and cream wallpaper in the family room adds a dramatic focal point. **LEFT:** A one-of-a-kind tree stump table and curved leather chairs create an intimate space in the office to conduct both business and pleasure. **ABOVE:** The dark lacquered desk and credenza in the office contrast beautifully with an interesting area rug.



From the office, the open concept layout of the main floor allows you to see into Michael's favourite space. The kitchen is a modern masterpiece with sleek, creamy white floor-to-ceiling cupboards by **IKEA**. A long island, topped in honed white Carrera marble, features both a standard and prep sink as well as 10 soft-close pot drawers.

Like the family room, the kitchen is softened by the delicately textured wallpaper in a delicious shade of milk chocolate that warms the room and whets the appetite. A chrome and glass table expands to seat 20 guests. A gas fireplace feature from BioFlame is mounted on a dramatic cream stone wall. *Continued on page 40*



A fireplace mounted on a dramatic stone feature wall warms the dining space. The glass table expands to seat 20 guests. The marble island is the perfect place for the family to gather. A stunning fall floral arrangement from Brant Florist helps set a beautiful table.



Budget Blinds

a style for every point of view®

Rollers, Wood & Faux Wood, Draperies, Cellulars, Solar Shades, Shutters, Romans, Sliding Panels, Woven Woods, Faux Iron, Motorization

*FREE In-home Consultation**

Professional Measuring and Installation

#1 In Custom Window Fashions

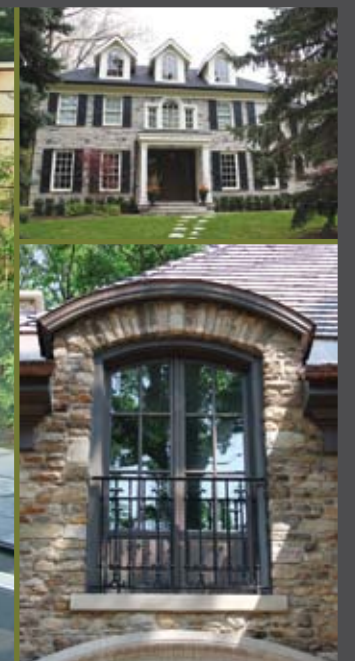
Exclusive No Questions Asked Warranty

Customer Satisfaction Guaranteed

30% off on Select Signature Series Window Treatments

Burlington
905-484-3372
Oakville
905-825-9438

Allow us to bring
your dream to life.



Whether you are renovating an existing home or planning to build a Masterpiece, Tallinn Windows & Doors will provide you with a choice of uncompromised products, innovative solutions and professional experience.

www.tallinnwindowsdoors.ca 416.236.4414



TALLINN
WINDOWS & DOORS INC.



TOP LEFT: A variegated natural stone wall is an eye-catching focal point in the master bathroom. **ABOVE:** The lower level family room includes areas to relax, craft and play. **ABOVE RIGHT:** White trim beautifully contrasts the bold brown geometric wallpaper in the master bedroom. **RIGHT:** Every inch of space is used, including the temperature-controlled wine cellar located in the headspace below the home's wraparound porch.



While the kitchen is a functional room designed to the hilt, the real reason Michael favours this space is because it leads directly into the home's two-car garage that doubles as a cigar lounge. The ultimate man cave, the garage is triple heated and features a 300 CFM ventilation system, two cosy leather club chairs, a wall mounted LCD TV, and an espresso bar. There is even room to spare for a car and a few motorbikes. The basement – where crafts are made, games are played, and homework is done – is similarly well appointed. Not just a play space for kids (although there is a sweet little hideaway beneath the stairs meant just for wee people), the basement boasts a wine cellar with enough space for 600 bottles, a tanning bed, and a spa series sauna with built-in sound system. A gorgeously designed nanny's quarters, complete with kitchenette, private bathroom, walk-in closet and computer nook, can also double as a luxurious guest suite.

Upstairs, four stunning bedrooms have been meticulously crafted to become not just rooms for sleeping, but retreats that soothe and restore both body and soul. The master en suite, with a magnificent rock wall in pale shades of mottled ochre, two smoked glass bowl sinks, and a deep soaker tub, is more of a spa than a bathroom. *Continued on page 42*

Cheferential Treatment

PERSONAL CHEF SERVICE

A unique experience that will nourish you body and soul, and accommodate your busy schedule with food made from scratch



289-259-6973

www.cheferentialtreatment.com

*What you do in your
bedroom is Our business*



BEVELLE

Roma Smoke

INTERIORS BY *the*
feathered bed

Full design services & beautiful custom draperies available
1463 Ontario St, west of Brant • Burlington
thefeatheredbed@bellnet.ca 905.681.2400

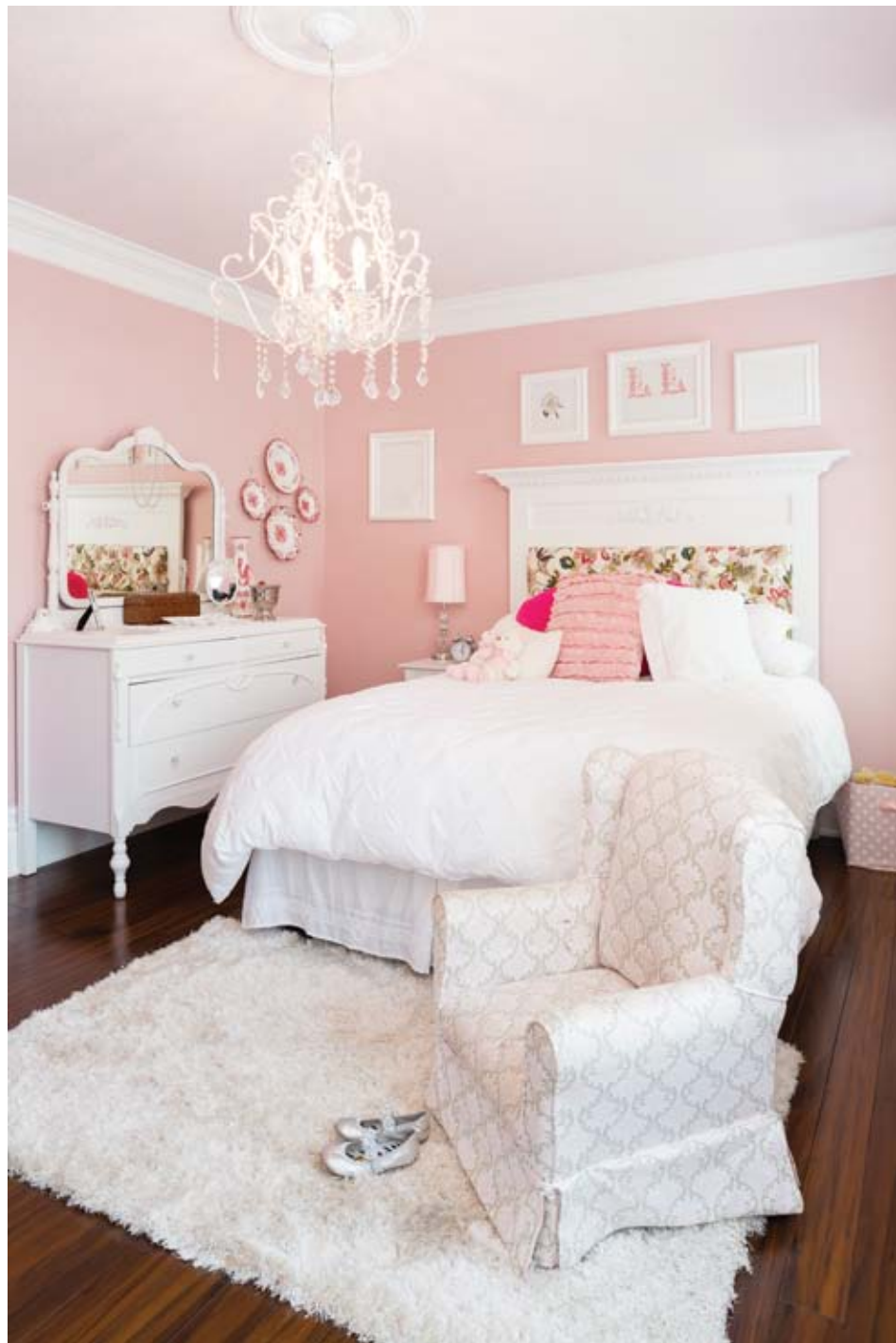
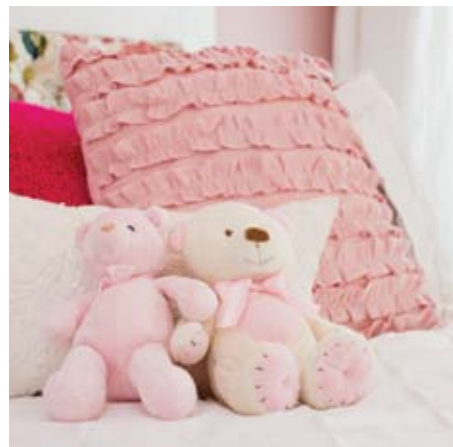
CAMBRIDGE
ELEVATING INC.
PREMIER MANUFACTURER
OF CUSTOM ELEVATORS



1261 Industrial Road
Cambridge, Ontario
1.800.265.3579
sales@cambridgeelevating.com
www.CambridgeElevating.com



RIGHT: The sparkling chandelier and floral headboard in this pretty pink room provide everything a little girl needs for the sweetest of dreams. **BELOW:** White accents, like a vintage-style dresser and crisp drapes provide beautiful contrast to the pops of pink throughout the room.



Perhaps the dreamiest room of all is the bedroom that belongs to the couple's daughter. A sparkling chandelier, sweet candy-pink walls, white vintage dressers, and a fireplace mantel-inspired headboard designed by Raquel fill the room with a touch of magic appreciated by princesses young and old.

Without question, this house is a true dream home. However, it was never meant to belong to the family that conceived, built, and designed every fabulous inch of it. Michael and Raquel created it to

fulfill another family's dream so that they in turn could continue to reach for their own.

As co-owners of their two businesses, the couple has been buying, decorating, landscaping, and selling their magnificently upgraded homes in Alton Village for the past several years. Their ultimate goal is to one day build their very own mortgage-free forever home. But in the meantime, this talented duo is content to make dreams come true for others. And they most certainly do. **OH**

It's not just a lift. It's a lifestyle.



Need a place to store your "Toys"? Why not store them on us!

Our 4-Post car storage lifts can instantly double the useable garage space at a fraction of the cost of adding an addition. At the Lift Superstore we have a wide selection of car storage and service lifts that are ideal for car enthusiasts and hobbyists looking for the right lift to get the job done.



2300 Speers Rd., Oakville, Ontario
866-799-5438 | www.liftsuperstore.com



directory

OUR HOMES attracts the area's finest businesses to advertise in our pages, and utilize our unparalleled distribution and coffee-table appeal to market their products and services. We're making it easier for you, our readers, to become educated as you plan your home-and real estate-related purchasing decisions. View these business ads online at www.ourhomesmagazine.com/oakville. The listings below are organized alphabetically by industry.

ARCHITECTURE & DESIGN

DAVID SMALL DESIGNS *Page 7*

AUDIO VIDEO/HOME AUTOMATION

PHAND CORPORATION *Page 35*

SERVNET SOLUTIONS *Page 11*

AUTOMOBILE STORAGE

THE LIFT SUPERSTORE *Page 43*

BUILDERS

MICHAEL DEJONG HOMES *Page 16*

SMITH & COMPANY TIMELESS HOMES *Page 12*

ELEVATORS

CAMBRIDGE ELEVATING *Page 41*

FABRIC/BEDDING/UPHOLSTERY

THE FEATHERED BED *Page 41*

FINE WOODWORKING/CUSTOM

FURNITURE/CARPENTRY

HEARTY FURNITURE *Page 33*

THE BAR STORE *Page 28*

FLORIST

BRANT FLORIST *Page 33*

FOOD/DRINK/CATERING

CHEFERENTIAL TREATMENT *Page 41*

GLASS WALLS

MONARCH MOVEABLE GLASS WALLS *Page 27*

HOME ACCENTS/COLLECTIBLES/

DÉCOR/FURNITURE

ANDERSON CARPET AND HOME *Page 23*

ELIZABETH INTERIORS *Page 27*

IN HOUSE ETC. *Page 25*

JOSHUA CREEK FURNITURE *Page 9*

LELA'S FINE FURNITURE *Page 28*

TRADING PLACES HOME DECOR *Page 29*

INTERIOR DESIGN/DESIGNERS/

HOME STAGING

PARKYN DESIGN *Page 5*

KITCHEN & BATH

CAMEO KITCHENS AND FINE CABINetry

Page 15

INTERIOR WORKS *Page 11*

KITCHEN TUNE UP *Page 29*

OPAL BATHS AND DESIGN *Page 17*

TOP NOTCH CABINETS *Page 2*

LANDSCAPING/LAWN & GARDEN

UNCOMMON GROUND *Page 4*

LIGHTING

GERRIE LIGHTING STUDIO *Page 6*

MANTELS/MOULDINGS

OMEGA MANTELS & MOULDINGS *Page 10*

NEW HOME COMMUNITIES

RIDGEWAY BY THE LAKE - BLYTHWOOD

HOMES *Page 8*

PRETTY RIVER - BRIARWOOD HOMES *Page 13*

OUTDOOR FURNITURE

CASUALIFE OUTDOOR LIVING *Page 25*

REAL ESTATE

MICHAEL BREJNIK - ROYAL LEPAGE

BURLOAK REAL ESTATE SERVICES *Page 3, 47*

TERRY SMITH - RE/MAX ABOUT TOWNE

REALTY *Page 12*

THAMES RIVER ESTATE *Page 45*

WINDOW FASHIONS

BUDGET BLINDS *Page 39*

FASADA HOME REMODELLING CO. *Page 25*

WINDOWS & DOORS

DOORWAY INC. *Page 17*

INFUSION WINDOWS & DOORS *Page 48*

KOLBE GALLERY WINDOWS

& DOORS *Page 48*

STATEMENTS DEFINE YOUR HOME *Page 35*

TALLINN WINDOWS & DOORS *Page 39*

Luxurious Thames River Estate



5600 sq. ft.
Waterfront
4 Bedroom
5 Bathroom
10 Acres
Barn/Seasonal Storage
3 Car Garage

Offered at

\$1,599,000



6954 Grande River Line, Chatham ON

A winding driveway bordered by nature and serenity leads to a luxurious country estate minutes outside Chatham. Nestled into the historic Thames River, this charmer includes ultimate privacy and many stunning features including picturesque surroundings. This enchanting custom home is situated on 10 private acres of southern exposure with magnificent river and magical garden views from all rooms. The exterior of the home includes many custom features. Expansive gardens, a yard equipped with 90% sprinklers, and strategic outdoor lighting have been planned to perfection.

Upon entering the lavish doorway, notice soaring 10+ foot ceilings, exclusive moldings, custom solid wood doors and maple planking floors throughout the entire home. Breathtaking open concept kitchen with custom cabinets, baseboards and trim, granite countertops, and in-home bbq and griddle. Entertain guests, cozy up in front of the two-sided fireplace, or find your way through the French doors leading to a luxurious screened in 800 sq. ft. flagstone patio which overlooks professionally landscaped grounds and a nature filled pond. Enjoy quality time with a loved one feeding friendly fish, frogs, and turtles. The property also features a boat dock situated on 875 ft. of erosion proofed river front. The dock can house three 64 ft. boats, includes a boat ramp and 200 amp service.

Main floor 840 sq. ft. master suite with spacious walk-in-closet, air-jet Jacuzzi with oversized piping for quick water flow, outfitted with a urinal, bidet, toilet, fireplace and sitting area.

Spacious guest room includes a 3 piece ensuite with outdoor stone patio. Other features include a utility room, a large basement for entertainment and storage, built in bar, ample closet space, spare bedroom, stained concrete flooring and a three-sided fireplace.

As an added convenience, a 1000 sq. ft. work office is included to simplify a busy schedule. The office includes a bathroom and a separate entrance into a granny flat featuring one bedroom, one bath, kitchen, living area and laundry room.

A 3-year old, 4800 sq. ft. barn is also included on the property featuring concrete floors, 5 large doors, men's and ladies' bathrooms, and heating for ultimate comfort.

For more information please contact Henry at 519.380.5966 Monday - Friday, 8am - 6pm
or visit www.6954granderiverline.com



Any Magazine...Any Region Shipped to your Mailbox!



Subscribe or buy online:

www.ourhomesmagazine.com

OUR HOMES magazines are published in:
Barrie . Grey/Bruce . Kitchener/Waterloo . London . Mississauga . Muskoka . Oakville/Burlington .
Ottawa . Peterborough . Sault Ste. Marie & Algoma . Southern Georgian Bay . Vaughan .
Wellington County/Orangeville/Caledon . Windsor . Moncton NB .
*And coming soon: Durham Region . Hamilton . Calgary AB . Kamloops BC

Peek inside beautiful homes, cottages, chalets and stores in any of these regions!

STYLE • COMFORT • IDEAS • REAL ESTATE
ourhomes
PREMIUM REGIONAL HOMES MAGAZINE



Braising WITH WINE AND BEER

BY TONIA WILSON

I adore the fall. For me it is a sentimental season, a time for getting cosy and enjoying family. Taking crisp walks through the woods wrapped in a favourite wool sweater, enjoying the changing colours of the leaves. Even my cooking gets more homey and heartfelt. The lean cuisine of summer is replaced by heavier meats and sauces, breads and cheeses. Bigger, bolder red wines start to get poured again and I have a tendency to return back to the classic recipes of Europe with all the flavour and tradition they have to offer.

One of my favourite methods for preparing food in the cooler months is braising – used for many of the classic dishes of Europe. Some celebrated examples are Boeuf Bourguignon, Coq au Vin, Sauerbraten, Osso Buco, Goulash, Carbonnade Flamande, and the list goes on.

In its simplest form, braising means to cook an item by slowly simmering it in flavourful liquid. The item can be a protein such as beef, lamb, fowl, game, etc. or vegetables such as artichokes or carrots. The liquid often consists of broth, and beer or wine. The meats used in braises are tougher and less expensive, but yield succulent results. I love the fact that a few inexpensive ingredients can turn into a sublimely tasting meal, all that is needed is a little patience and the result is truly worth the wait. Time is really the only thing that will allow the meat to fully achieve the tenderness it is capable of.

I also have a weakness for a dish with history, and typically these classic braised classics have at least one hundred years behind them. Take Boeuf Bourguignon for instance, originally a peasant dish from the region of Burgundy in France. Stripped to the basics, this is a humble beef stew. It originated over one hundred years ago and would have been prepared with a coarse, tough piece of beef, pearl onions and mushrooms. The classic recipe calls for lengthy braising in a full bottle of Burgundy (which is made from Pinot Noir, and nowadays will cost you at least \$50 a bottle). This dish began as a farmer's meal but over time gained gourmet status on account of its incredible taste.

Lastly, I love braised dishes because they can incorporate loads of flavour through the use of wine or beer. Think of all the flavours in a big, juicy Cabernet Sauvignon, then think how great your lamb shank would taste bathed in it. The same holds true for beer. There are so many beers that are packed with flavour, and by adding them to the pot you'll be adding all their flavour to your final dish.

The best way to get comfortable with braising is to find a simple beef stew recipe that calls for wine. The Internet is an amazing source for recipes. Once you feel comfortable braising with wine, you can try beer.

To the left is a short list of beers and wines that work wonderfully with food. Leftover wine works well, just remember the general rule that if you wouldn't drink it, don't cook with it. **OH**

GREAT WINES FOR BRAISING:

Cabernet Sauvignon
Shiraz/Syrah
Merlot
Pinot Noir

GREAT BEERS FOR BRAISING:

Wheat Beers
India Pale Ales
Belgian or Abbey style ales
Porters
Stouts

Tonia Wilson is a Sommelier and Chef

online

Go to www.ourhomesmagazine.com/lamb for a simple braised lamb recipe.



South Oakville Luxury 455 Lakeshore Rd

List Price \$2,600,000

Contact: Michael Brejnik
905.335.3042 office
michael@michaelbrejnik.ca
Royal LePage Burloak
Real Estate Services
www.michaelbrejnik.ca



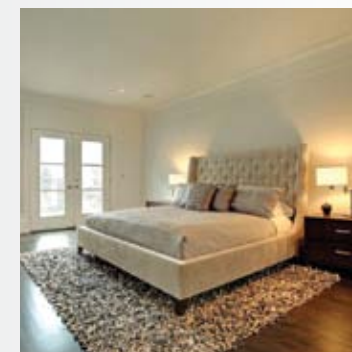
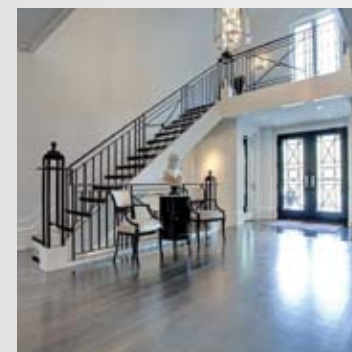
HOT PROPERTY



This is an exceptional home on a fabulous lot in South Oakville.

Situated conveniently close to the downtown shops, restaurants and cafes, the finest schools, parks and the stunning Waterfront, this home designed by BREJNIK FINE HOMES is exceptional. The architecturally dramatic façade, elegant landscaping, stately entrance and meticulous detail create a dramatic streetscape.

Pristine paneling, high ceilings and magnificent hardwood floors abound. Beautifully proportioned spaces have been masterfully designed by elegant principle rooms with luxurious finishes and details provide ideal formal entertaining spaces. An amazingly functional designer kitchen boasting its high end appliances is wonderful when entertaining large numbers of guests or just preparing family meals. All four bedrooms on the 2nd level feature generous ensuite bathrooms and closets. Enjoy this timeless masterpiece and its exquisite design.



Special Advertising Feature



UNLIMITED POSSIBILITIES

For more information on Kolbe Windows and Doors
Contact Kolbe Gallery of Oakville **1.866.348.4398** or Infusion Windows and Doors Burlington **1.877.319.0744**

KOLBE
Gallery
■ WINDOWS & DOORS ■

See the Difference Quality Makes

Featuring
POINT FIVE
WINDOWS & DOORS®