

people

# NEW BEGINNINGS

PHOTOGRAPHY  
JESSICA DEEKS

A new year means there's lots of exciting things happening with local Ottawa businesses. Here are just a few!

## FRANCESCA LÉPINE-WILLSON *William's Court Kanata Lakes Apartments*

**What's new for 2016?** Spring 2016 marks the completion of the final phase of the luxury apartments at William's Court. The extra touches to our amenities have been included. In addition to our large indoor pool and LifeFitness gym, we now have a billiard room, yoga studio and courtyard gazebo with fire pit.

**What makes William's Court unique?** William's Court gives our tenants the opportunity to live in a new, high-quality property, without the burden of condo fees or property taxes. Every unit has high ceilings, hardwood floors and six appliances, and offers more square feet than average.

**Why rent here?** Lepine-built apartments are the perfect solution for baby boomers who are prepared to downsize but don't want to downgrade. Busy professionals also find the luxury and convenience provides the perfect fit for their lifestyle.



## LISA HAMPEL & KELLY GAWARGY *Trove Decor*

**What's new at Trove Decor?** We now offer décor items for rent. Specifically, all the items you would need to throw an elegant tea party.

**How would you describe your store style?** Trove Decor has a uniquely eclectic, rustic, modern feel. With the dreamy music, soft lighting and thoughtfully selected items it is like a warm hug when you enter.

**Why should people shop at Trove?** Trove Decor is a unique consignment shop that combines the feel of a high-end luxury boutique with the benefits of paying consignment-store prices. Save money and the environment. *Continued on page 58*

Bringing your vision to new heights.

30 years  
experience in custom stair  
& railing manufacturing



OTTAWA CLASSIC  
STAIRS & BANNISTERS

www.classicstairs.com | email: sales@classicstairs.com | f t



potvin  
KITCHENS & CABINETRY

www.potvinkitchens.com



DHIEGO LOPES &  
ROLDAN P. GUERRERO  
*The Stone Fabricator*

**What's new for 2016?** We install granite and quartz for retailers, contractors and big-box stores. We have great production capacity and a very large quartz selection from the most reputable brands in the market. Come see our huge selection of granite slabs in our indoor slab showroom.

**What makes TSF unique?** The main advantage of becoming a business partner of TSF – The Stone Fabricator, is that TSF does not sell directly to the public. TSF is a truly business-to-business company and only sells to its business partners. TSF delivers and installs within 10 business days from the date of taking measurements. TSF has an excellent reputation with its customers.

**What can we find at TSF?** You will find a great selection of granite, quartz, sinks and faucets. It is a one-stop shopping location for your needs in terms of custom projects using stone slabs (granite, quartz, marble, etc.). We also have a dedicated project manager to work with our business partners.



YVES POTVIN &  
DANIEL GAUTHIER  
*Potvin Kitchens & Cabinetry*

**What's new for 2016?** We celebrate our 35th anniversary this year!

**What makes you unique?** We are committed to lowering our carbon footprint on the environment and make decisions to be as green as possible. Our commitments include our new state-of-the-art paint shop, which offers super durable water-base finishes. We've lowered our emissions by over 70 per cent.

**What services do you offer?** We offer flexible services on all levels. Our great design teams are fluent in all design styles and our cabinet shop is fully equipped to produce fully custom spaces as well as volume production. We are a full service company for builders, doing anything from framing, siding, stairs, exterior trim, cabinetry and interior finishes such as trim, hardware and doors. We also produce custom cabinetry for kitchens, washrooms and walk-in closets. **OH**



NO MAINTENANCE FEES, NO PROPERTY TAXES, NO COMPARISON

★★★★

“WE WANTED A HOME EVEN THOUGH WE  
WEREN'T NECESSARILY LOOKING FOR A HOUSE.  
WE CHOSE WILLIAMS COURT.”

Watch Stephanie's testimonial at WilliamsCourt.com



IMMEDIATE  
OCCUPANCY  
or book for 2016

\$1300 - \$2990  
/Month

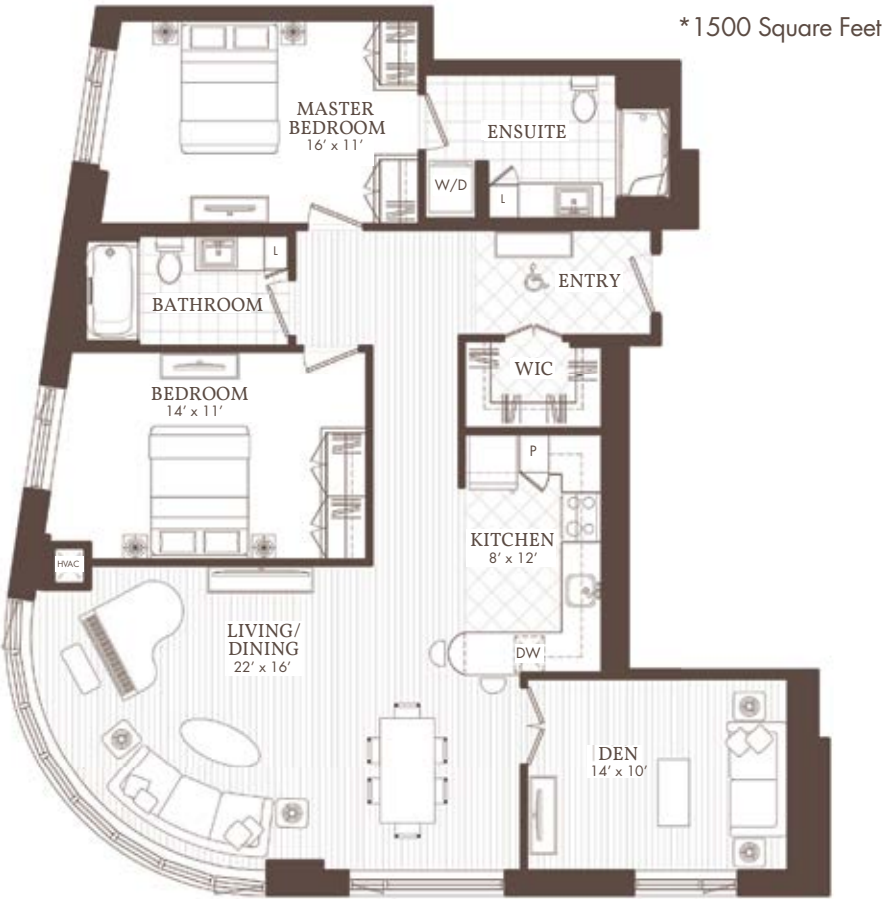
ALL AMENITIES INCLUDED  
IN YOUR RENT!

★★★★

4 STAINLESS STEEL APPLIANCES  
IN-SUITE LAUNDRY  
9 FOOT CEILINGS  
STORAGE & BICYCLE LOCKERS  
INDOOR SALTWATER POOL  
STAFFED FITNESS CENTRE  
PUBLIC TERRACE BARBECUES  
LOUNGE  
GAZEBO GARDEN  
LAKES & TRAILS  
SOCIAL ROOM

★★★★

TOUR TEN FURNISHED  
MODEL SUITES



LEASE A LÉPINE APARTMENT TO ENJOY  
PEACE OF MIND, FREEDOM TO TRAVEL, AND A RESORT LIFESTYLE

613.663.1904



LEASING CENTRE Mon-Fri 9AM-6PM, Sat-Sun 10AM-5PM. After hours by appointment.  
Suite 105, 1203 Maritime Way, Kanata | 613.663.1904 | WilliamsCourt.com

★★★★  
LÉPINE