

WINTER 2017/2018

STYLE ■ COMFORT ■ IDEAS ■ REAL ESTATE

ourhomes

T H E C I T Y O F O T T A W A

WESTBORO winner

ROCK SOLID
BUILD

DESIGN-FORWARD
IN OLD OTTAWA SOUTH



PICKS FOR
COSY COMFORT

HOLIDAY
DECORATING IDEAS



**THE STONE
FABRICATOR**
YOUR GRANITE AND QUARTZ CNC PARTNER

WWW.THESTONEFABRICATOR.COM
ADDRESS: 50 SLACK RD, UNIT 2 D,
OTTAWA, ON, K2G 3N3
EMAIL: INFO@THESTONEFABRICATOR.COM
TELEPHONE: (613) 225-1117

BUSINESS to BUSINESS (B2B) SALES, FABRICATION and INSTALLATION
WE DO NOT SELL DIRECTLY TO THE PUBLIC - B2B PARTNERS ARE WELCOME!

TO CELEBRATE OUR 5TH ANNIVERSARY WE ARE ADDING TO OUR TSF FABRICATION CENTER

TO INCREASE PROCESS EFFICIENCY

- **breton** XPRESS TOP SMART SUITE
- **breton** CNC SAW WORTHY OPTIMA
- A CNC ROUTER TO POLISH ALL KINDS OF EDGE PROFILES AND SHAPES

FOR BETTER INVENTORY CONTROL & MATERIAL HANDLING

- **breton** DIGITAL PHOTO STATION
- 124 FOOT 5 TON OVERHEAD CRANE
- 85 FOOT **GORBEL** OVERHEAD CRANE WITH TWO BRIDGES

CURRENT **DAILY** PRODUCTION CAPACITY:

720 SQF (15 KITCHENS) P/ 8 HOUR SHIFT OR
2160 SQF (45 KITCHENS) P/ DAY (3 SHIFTS)

Kitchen Countertops

Vanity Tops

Custom Fabrication

Access to the BEST and LARGEST indoor selection of stone slabs in the region:

QUARTZ

- TSF works with the most reputable QUARTZ suppliers in the industry, including



- TSF offers more than 450 options of QUARTZ for **your customers** to choose from

GRANITE, QUARTZITE, MARBLE & OTHER NATURAL STONES

- TSF normally displays over 300 slabs in its own warehouse,
- TSF makes available for viewing over 4,000 slabs at indoor warehouses from stone distributors, located within 800 meters from its fabrication centre,

- TSF focuses on quality and cost-effectiveness. Benefit for you and your customers!
- TSF installs in **UNDER 10 days**
- 15,000 sqf facility, includes design centre, showroom, offices, and the **TSF** fabrication centre
- TSF dedicated Project Manager available to you and your customer
- TSF uses digital technology and an ECO friendly process

REQUEST A QUOTE TODAY AND BECOME OUR PARTNER

613 225 1117 • WWW.THESTONEFABRICATOR.COM
DEDICATED TO OUR BUSINESS PARTNERS AND THEIR CUSTOMERS

Authentically Modern



AWARD-WINNING HOMES IN RIVERSIDE SOUTH AND REVELSTOKE
COMING TO KANATA LAKES AND COWAN'S GROVE ON BANK STREET SOUTH

HNhomes.com





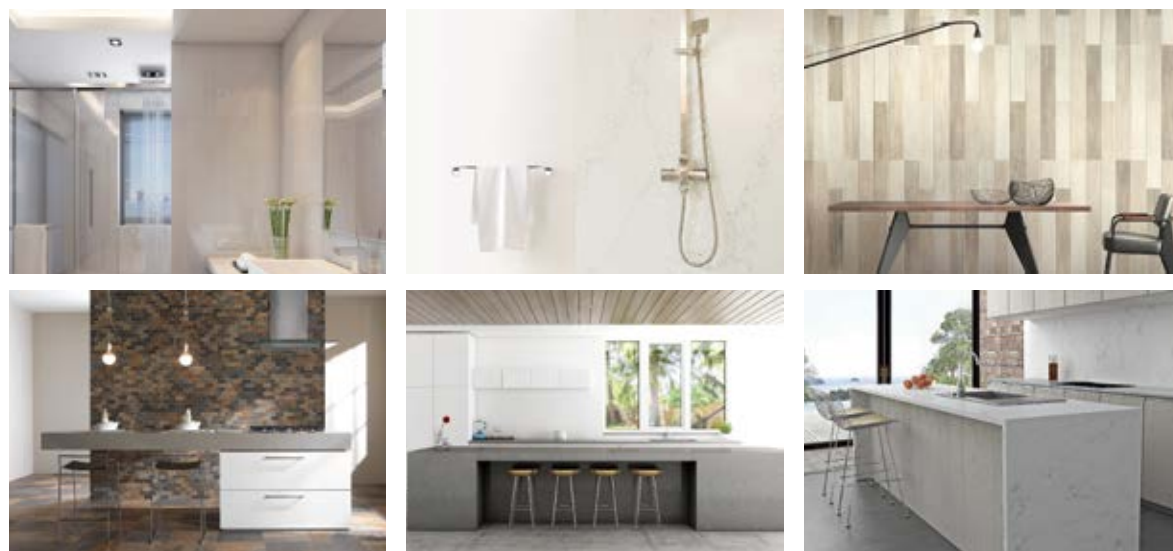
Quality first.

Premiere Supplier of Granite Countertops in Ottawa

All of our products are sourced from world-class suppliers.

kitchen countertops | vanity tops | custom fabrication
porcelain tiles | backsplash | sinks & faucet | hardwood | laminate

commercial residential construction renovation



one stop shop

Large display of countertops,
hardwood flooring,
tile and backsplash.
Match everything in one place.



STONESENSE

our service

Professional service guaranteed.
Countertop installation within 10 days.



613-247-0444

Unit 1-3, 2415 Stevenage Dr, Ottawa K1G 3W1

www.stonesense.ca

PLOUM sofa by Ronan & Erwan Bouroullec
www.ligne-roset.com

As if
Gravity
or
attraction
that keeps me
here



Ligne Roset Ottawa
1165 Bank Street
Ottawa, Ontario K1S 3X7
Tel. (613) 695 - 1165
info@lignerosetottawa.ca

BEAUTIFUL STATEMENTS. **ligne roset®**



EPA
Certified

stûv³⁰

stuvamerica.com

Wood & gas | Stoves & fireplaces

Stûv 30-compact & compact one 1.8 g/h



530 West Hunt Club Road Ottawa Ontario K2G 7B5 • 613.225.4000 • ashleyhomestoreottawa.ca


Ashley
HOMESTORE

Winner of four
2017 GOHBA awards, including
**Green Custom Home
of the Year.**



COLOUR OF
THE YEAR 2018

CALIENTE

AF-290

Farmside Green

at Experimental Farm

COMING SPRING 2018



An enclave of ten homes designed by Ottawa's premiere team of architects and constructed by the city's leading green builder, Farmside Green is one of a kind. It takes its architectural inspiration from its unique location adjacent to the Experimental Farm, a National Historic Site that dates back to 1886. At the same time, this enticing new development looks confidently toward the future in its energy efficient design and resilient construction.

Taking his cue from classic farmhouse design, architect Barry J. Hobin has created a series of singles and semis with distinctive rooflines, gable features and quietly elegant massing that says, "Welcome home." Each model presents its own, special face to the world, while the ten homes together make up a streetscape that's a source of renewed delight every time you view it.



Reserve your lot today.
Call 613-523-8598 or visit
rndconstruction.ca



VISIT US TODAY:

OTTAWA **Bonds Decor** 1242 Bank St 613.523.1534 bondsdecor.ca

OTTAWA **Hampton Paints** 1411 Carling Ave 613.729.0114 hamptonpaints.ca

OTTAWA **The Decorators Choice** 1495A Innes Rd 613.736.8212 thedecoratorschoicepaintanddecor.ca

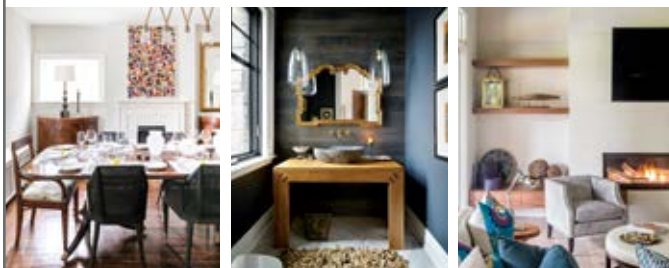
STITTSVILLE **Bonds Decor** 150 Iber Rd 613.270.8504 bondsdecor.ca

SUBSCRIBE



Now receive OUR HOMES premium local magazines directly in your mailbox!

Featuring Home Tours, Style Ideas, Recipes & DIYs, OUR HOMES helps you find exactly what you need for your home and it's just around the corner!



OUR HOMES publishes 14 regional magazines quarterly in the following LOCAL markets:

- Barrie/Ontario/Midland • Grey Bruce • Hamilton • London • Muskoka
- Niagara • Oakville/Burlington/Mississauga • Ottawa • Peterborough
- Southern Georgian Bay • Toronto & York Region • Region of Waterloo
- Wellington County/Orangeville/Caledon • Windsor

CHOOSE YOUR REGION(S) & SUBSCRIBE TODAY:
subscribe@ourhomes.ca 705.445.5065 x200

ourhomes
celebrating life at home

STYLE • COMFORT • IDEAS • REAL ESTATE
ourhomes
THE CITY OF OTTAWA

REGIONAL PUBLISHER/FRANCHISE OWNER Melkay Media Inc.
Beth Charbonneau
beth.charbonneau@ourhomes.ca

REGIONAL MANAGING EDITOR Diane Sawchuk

REGIONAL PRODUCTION MANAGER Kelly Donaldson

MARKETING & ADVERTISING Beth Charbonneau
613.519.1609 ext. 100, (c) 613.327.1923
Kaura Simpson, 613.402.4565
kaura.simpson@ourhomes.ca

REACH US EASILY: firstname.lastname@ourhomes.ca

OUR HOMES is a registered trademark of OUR HOMES MEDIA GROUP INC.
OUR HOMES The City Of Ottawa is published four times a year by Melkay Media Inc. under the license of OUR HOMES MEDIA GROUP INC.

OUR HOMES is distributed via free pick up to residents of Ottawa at high traffic locations throughout the region. OUR HOMES is distributed throughout select neighbourhoods, professional offices and to select business establishments via direct mail and can be viewed online at ourhomes.ca/ottawa.

Please send all letters and/or feedback to OUR HOMES Magazine, 11 - 300 Earl Grey Dr., Suite 209, Kanata, ON K2T 1C1. Or email us at editor@ourhomes.ca.
All letters received are subject to editing for grammar and length.
If undelivered, return to above address. Publications Agreement # 40011180

OUR HOMES MEDIA GROUP INC:

EDITORIAL

EDITOR-IN-CHIEF Georgette McCulloch

ASSOCIATE & WEB EDITOR Laurel Fortin

MANAGING EDITORS

Nancy Belgie, Adrienne Brown,
Laurel Fortin, Walter Franczyk,
Mary Hatt, Gina Makkar,
Tiffany Mayer, Georgette McCulloch,
Tamarisk McNalty Stephens, Melissa North,
Merrilyn Patterson, Diane Sawchuk

ART

ART DIRECTOR Tara Chattell

ASSOCIATE ART DIRECTORS
Sheila Britton, Robynne Sangiuliano

DIRECTOR OF PHOTOGRAPHY Jason Hartog

PRODUCTION

PRODUCTION DIRECTOR Lynn Derrick

PRODUCTION MANAGERS

Julia Dempsey, Kelly Donaldson,
Marilyn Reid, Tracy Shuttleworth

OPERATIONS

MANAGING DIRECTOR, SALES & MARKETING

Jamie Jefferson
jamie.jefferson@ourhomes.ca

MANAGING DIRECTOR, OPERATIONS
Georgette McCulloch

ACCOUNTING Donna Duggan

CLIENT RETENTION & DISTRIBUTION
Lisa Merrell

ACCOUNTS RECEIVABLE Tyler Annette

CONTRIBUTORS

Sheila Britton, Tara Chattell, Jeff Francoeur, Jason Hartog, Gordon King,
Nick Lafontaine, Jenelle McCulloch, Dolores Pian, Melanie Rekola, Diane Sawchuk,
Mehreen Shahid, Yanic Simard, Valerie Wilcox

Advertisements and the content, including photos, of advertisements published within OUR HOMES magazine are supplied solely by the advertiser and neither the publisher nor OUR HOMES Media Group Inc. accept responsibility for opinions expressed in advertisements or for copyright issues with regards to photos, advertising copy and advertisements, nor shall they be held liable thereby. By act of reading this publication, all advertisers and readers agree to indemnify and hold harmless both OUR HOMES Media Group Inc., and the publisher thereby. Copyright ©2017 OUR HOMES Media Group Inc. All rights reserved. Reproduction without permission is prohibited.

OUR HOMES CAN BE FOUND IN THE FOLLOWING MARKETS:

- Barrie/Ontario/Midland • Grey Bruce • Hamilton • London • Muskoka
- Niagara • Oakville/Burlington/Mississauga • Ottawa • Peterborough
- Southern Georgian Bay • Toronto & York Region • Region of Waterloo
- Wellington County/Orangeville/Caledon • Windsor



Celebrating over 50 years of excellence, Barwood Flooring is Ottawa's Premier leading flooring specialist. Our Showroom, located in Nepean, will mesmerize you with a wide array of the finest quality of flooring selections such as **HARDWOOD, CORK, LAMINATE, LEATHER, HAND-SCRAPED, ENGINEERED, VINYL, STAIR REFACING** to reflect your home's sophistication and to suit every style and budget. Our sales consultants are highly knowledgeable with our products and will respond to any of your questions. Estimates are FREE. Our warehouse is a humidity-controlled environment, unique in Ontario.

BARWOOD FLOORING

"Flooring for life."

ONE MAIN LOCATION TO SERVE YOU:
155 Colonnade Road S, NEPEAN | T: 613-225-0296
www.barwoodflooring.com



Hardwood Floors

White Oak RQ Isla
Alive Collection



Expert Design
& Craftsmanship
since 1984

paradise
BATH AND KITCHEN

48 Northside Road, Nepean | 613.828.1515
www.paradisebathandkitchen.ca



AND SO IT'S COME TO THIS: another winter, signaling the end of another year. Here we find ourselves – again – coming full circle and on the cusp of the unknown, lying just out of our reach in the new year.

As soon as winter is upon us, I often find myself thinking about time, truly understanding the meaning of “fleeting,” marvelling at how quickly the year has gone by.

It's a juxtaposition of time where past, present and future all converge, as 2017 becomes 2018. If you're anything like me, I'm sure you find that some years, there's much to be grateful for, so many fond memories you'll treasure, always. Other years, you can't wait for that countdown to midnight so you can start fresh.

To my mind, what's most interesting about the past is its influence on us and the part it plays in both our present and our future. What brought on this line of thinking, besides my own experiences this year, is that the two homes we feature in this issue have this in common – each in their own way meld different elements from the past with the present in their design to create a home that is timeless.

Specifically, the custom home featured on our cover updates the classic farmhouse look with an aesthetic that's traditional, sophisticated and current in its use of palette and materials. A collaboration between a designer, an award-winning custom design/builder and a homeowner with a remarkable talent for interior design,

this project was recognized with three awards at the Greater Ottawa Home Builders' Association Design Awards 2017.

Then there's our other custom home, which straddles past and present with a transitional exterior clad in a material dating back to time immemorial. Inside, this same stone blends seamlessly with modern design.

And in our People section, local builders you'll probably recognize discuss some of the challenges they faced this past year, and looking ahead, what they foresee in the coming year.

Whatever it is you seek in the year ahead, and wherever the trail leads you, I hope you find happiness and peace. Wishing you all the best for 2018.

Diane Sawchuk, Managing Editor
diane.sawchuk@ourhomes.ca

Follow us    Subscriptions subscribe@ourhomes.ca

online Get more at ourhomes.ca



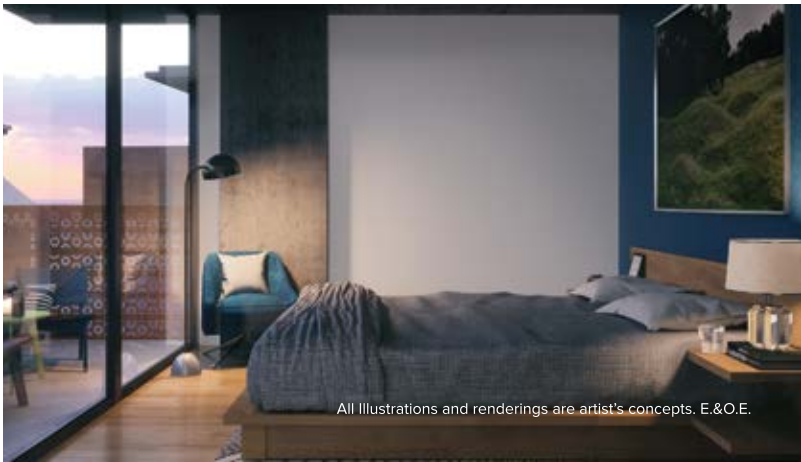
Quality and Design come first, with the convenience of Beechwood Village at your doorstep.

Discover our Spacious and Thoughtfully Crafted
1, 2, And 3 Bedroom Homes From the \$400s.

Be part of the transformation, as St. Charles Market comes alive with 54 new residences and an exciting new retail market at its heart. Just moments to downtown and a short stroll to restaurants, shops, grocery stores and boutiques.

CONTACT US TODAY AND TOUR OUR PRESENTATION CENTRE
135 BARRETTE ST. (Corner of Beechwood Ave.)

(613) 301-7782 info@modbox.ca STCHARLESMARKET.CA



All illustrations and renderings are artist's concepts. E.&O.E.

CONTENTS

WINTER 2017/2018



66



30



46



42

ON THE COVER

This Westboro modern farmhouse was recognized in several categories in the recent Greater Ottawa Home Builders' Association Design Awards 2017. Story, page 46. Photography by Gordon King.



22

LOCAL FEATURES

- 22 Style Picks** From tropical plants to artful fireplaces, here are six winter-inspired picks for your home.
- 30 Feature Home** Stone with a history dating back thousands of years is the cladding of choice on this modern home.
- 42 Spotlight** Ligne Roset Ottawa offers stylish furniture, lighting and accessories in a welcoming, museum-like showroom.
- 46 Home & Builder** With its soothing palette and a sophisticated design, this modern farmhouse is a winner.
- 60 People** Local builders reflect on the past year and look ahead to what's coming up.

DEPARTMENTS

- 12 Editor's Note**
- 16 Publisher's Note**
- 20 Advice** Tile Test
- 26 Design Ideas** Harmonize Your Hues
- 44 Decorating** Nordic Noel
- 58 Double Take** Beaucoup Boho
- 64 Real Estate** Ready, Set, Sell
- 66 Cooking At Home** Loafing Around
- 70 Crafty Ideas** Pining For Fire
- 72 Holiday Hints** It's A Wrap!
- 75 Home Resource Directory**
- 76 Cooking At Home** Richness Of Ragu
- 78 Finishing Touch** Pieces Of Fleeces



The globally awarded Wellings lifestyle community is now leasing in Stittsville!

Say hello to more choices, rightsized apartments, atrium living and à la carte services designed for a carefree lifestyle.

NOW 55% LEASED! OPENING 2018



We are a proud rebel in delivering living solutions with the freedom of more choice, more comfort and more value. Enjoy everything you would expect, then add: a 24-hour concierge, fully licensed pub and restaurant, fitness gym, and underground parking!
Choose to live well at Wellings, a vibrant new community for adults 55+

Visit the leasing centre today!

5709 Hazeldean Road, Stittsville
(Corner of Huntmar Drive beside Shoppers Drug Mart)
Call Christine at 613-581-2481
WellingsofStittsville.com



Hours
Monday to Friday: 11:00–4:00 pm
Saturday 10:00–3:00 pm
Appointments warmly welcomed outside leasing centre hours

HINKLEY
LIGHTING

LIGHTING DESIGN PLANNERS ON SITE

MARCHANDELECTRIC.COM

1283 Algoma Rd. Ottawa, ON (613) 749-2279	44 Iber Rd. Stittsville, ON (613) 831-7279	140 Boul. Gréber Gatineau, QC (819) 561-0185
---	--	--

Marchand
LIGHTING + ELECTRICAL

publisher's note



AT THE END OF EACH YEAR I TAKE TIME TO REFLECT

on what we have accomplished and just how much I have enjoyed it all. The people we meet while seeking beautiful homes to feature adds to how rewarding it is to be the publisher of OUR HOMES Ottawa.

The weather is certainly cold and unforgiving in Ottawa, but the people are warm. I am always amazed at how easy it is to chat with a complete stranger and how often the opportunity routinely arises. That is just one of the things that makes our lovely city so special.

Ottawa is special, with many builders with exciting new projects on the go. See our People feature (page 60) and meet a few local builders who share their plans for 2018. While we're on the topic of winning builders, take a visual tour of the Greater Ottawa Home Builders' Association (GOHBA) award-winning home by Gordon Weima – it will inspire you!

We tend to spend more time indoors over the winter, one hearty, stick-to-your-ribs recipe as well as a twist on a sweet standard; both are sure to be crowd pleasers. After all, enjoying time with family and friends is what it's all about, so let's remember to pause and appreciate the time we have to spend with our families.

I have so much to be grateful for: a wonderful family (especially my two special granddaughters), exciting work and wonderful people to collaborate with. My thanks to all OUR HOMES Ottawa readers and supporters who help make it all possible. And I truly appreciate the energetic and enthusiastic people who work diligently to make each issue of OUR HOMES a magazine that inspires our readers.

I am excited for 2018 because I know it will be our best year ever.

All the best to you all in 2018!

Beth Charbonneau

Beth Charbonneau, Publisher
beth.charbonneau@ourhomes.ca

f Like us on Facebook at
facebook.com/OurHomesOttawa
t Follow us locally @OurHomesOttawa

OUR HOMES SPECIAL ADVERTISING FEATURE

Time to celebrate!

Jodie Matthiesen and the team at Hubert's Fireplaces were thrilled to host a party on September 20th in celebration of **95 YEARS IN BUSINESS** as well as their new location! Fire and Ice was the theme organized by True Dot Design. Fire and Ice cocktails, make your own smores bar and a flame performance were all part of the special event.

Visit our new showroom to view our new fireplace displays.

HUBERT'S

Fireplace Consultation + Design

Visit our NEW location at 703-1290 Old Innes Rd.

www.hubertsfireplaces.com | hubertsfireplaces@outlook.com | 613-728-3786

Photos by Lindsey Gibeau/WESTBORO STUDIO

NOW ACCEPTING QUALITY CONSIGNMENTS

Experts in the Sale & Appraisal of Entire Estates, Paintings, Antiques, Fine Arts, Silver, Bronze, Oriental Carpets, Fine Furniture, Collectibles & Jewellery.

Michael Spooner & Son

Estate Auctioneers & Appraisers

613-220-1212 | admin@spoonerauctions.com | ottawaestateappraisers.com

Our first auction of 2018 will be held on **Tuesday, January 9th** at St. Elias Centre 750 Ridgewood Ave., Ottawa. Sale begins at 4:30 PM, preview at 3:00 PM.

For more information about all of our upcoming auctions and to access online bidding please visit **spoonerauctions.com**



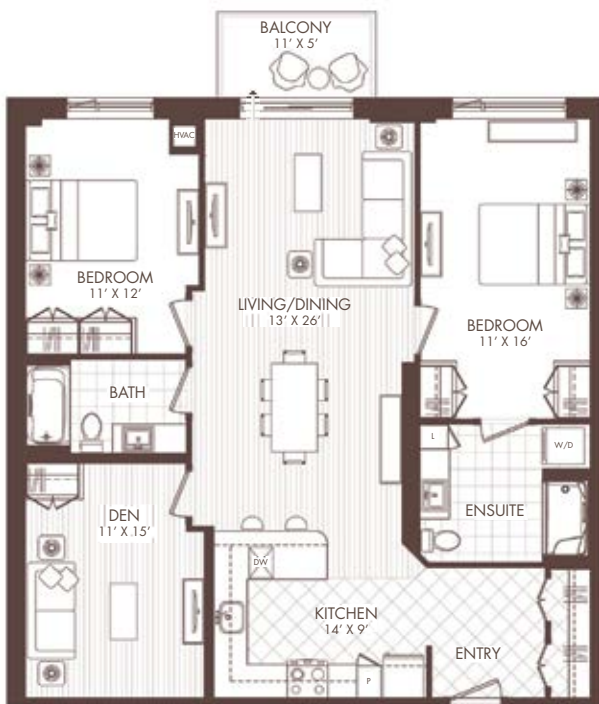
SUITES FROM
825 - 1725
SQ.FT.



START LIVING CAREFREE TODAY!
1425 VANIER PARKWAY

LES TERRASSES
Francesca
LÉPINE LUXURY APARTMENTS ★ ★ ★ ★

- 1 VISIT OUR LEASING CENTRE
- 2 RESERVE YOUR FAVOURITE SUITE
- 3 SELECT AN EARLY 2018 MOVE-IN DATE



RENT TO LIVE CAREFREE: MAINTENANCE FREE, MORTGAGE FREE,
PROPERTY TAX FREE, **WORRY FREE**



PROFESSIONAL FITNESS



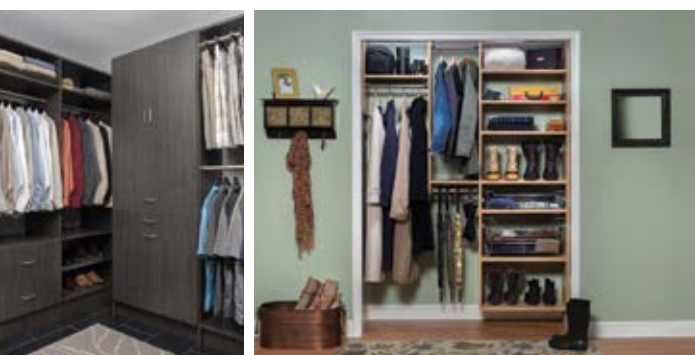
SALTWATER POOL



24/7 CONCIERGE



OUTDOOR TERRACE





tailored living

featuring **P** PremierGarage[®]
Closets • Garages • Murphy Beds • Pantries
Flooring • Whole Home Organization

www.tailoredliving.com
www.premiergarage.com
ottawa@TailoredLiving.com
613.225.5218

FREE IN HOME CONSULTATIONS

LEASING CENTRE  SUITE 1330, 200 COVENTRY ROAD
LepineApartments.com | 613.714.9673 

advice

PHOTOGRAPHY
COURTESY OF STONE TILE



KNOW YOUR TILE

Interior Designer **Dolores Pian** shares her ideas.

Tile. This all-purpose material used on floors, walls and ceilings, in wet or dry locations, as decoration or as a versatile workhorse, is available in a variety of shapes, sizes, colours and textures. Today's manufacturers have the shocking ability to mimic concrete, brick, wood, marble, carpet, wallpaper, sand – you name it – in ways that look more real than real. The options are endless.

Here's what you really need to know when choosing the right tile.

PLANNING

Research online to see the many possibilities. Know what you're looking for to make purchasing easier.

Have a floor plan. The size of the room and its intended use will dictate what's possible.

Determine your colour scheme. Bring home a sample tile to make sure it coordinates with other elements.

Explain to your contractor what size and type of tile you're using. The size and weight of the tile affects the application and labour costs.

Plan and start the tile layout from the room's centre line and work outward, balancing the pattern and minimizing odd pieces.

MINI TO MAXI

Tiles can be as tiny as ¼-by-¼-inch or super large at five-by-10-feet.

The size and condition of a floor or wall will determine what size suits your space best. Uneven surfaces and curves have different size and installation requirements than do large, flat surfaces.

TILE VOCABULARY

Application: What is the tile's intended use? High or low traffic? Floor or wall? Wet or dry? Answer these questions before making your final choice.

Ceramic: Stoneware body with a surface application of colour or texture. Highly decorative and mostly used for walls.

Porcelain: Made from fine white compressed clay, fired at a high temperature to create a dense tile, impervious to moisture. It has colour throughout the tile so that if chipped, the surface colour appears in the body of the tile.

Glass: Made of glass where colour lies behind or throughout the body of the tile.

Mosaic: Individual small tiles, purchased on mesh sheets 12-by-12-inches to 118-by-118-inches. Can be easily cut to size. Perfect for inside and outside curves.

Large Format: 14½-by-14½-inches or larger.

Specifications: Technical information including intended use, material composition, country of origin and LEED certification. Always read your specs to know what you're buying and how to maintain it.

Matte Finish: Non-shiny surface, easy to walk on, slip resistant.

Polished Finish: Shiny surface and slippery.

Stacked Pattern: Tiles are aligned to form a repeating grid pattern.

Staggered Pattern: Joints are not aligned. Each tile requires different offset spacing depending on size.

THE FINISHING TOUCHES

Grout: Filler used between tiles allowing for flex. The tile setter can make minor adjustments along the way.

Grout Size: The space between tiles – ⅛-inch for wall tiles, ¼-inch for floor tiles. Super large tiles require larger grout lines.

Grout Release/Sealer: Same product, different names. Matte porcelain tiles need to be sealed to avoid the cloudy effect that occurs after wiping off the edges.

Grout Colour: Use as a design element. Match grout to wall colour. Use darker grout for floors. Grout tends to darken with regular foot traffic and cleaning.

Epoxy Grout: Guards against germs. Especially for spillage of bio fluids in kitchens and bathrooms.

SPECIAL PIECES

Trim pieces are usually L or U shaped and cap off tile edges for a smooth, clean look, making it easier to clean. They come in a variety of finishes and colours. Most pros like to use the Schluter System, available in any large hardware store.

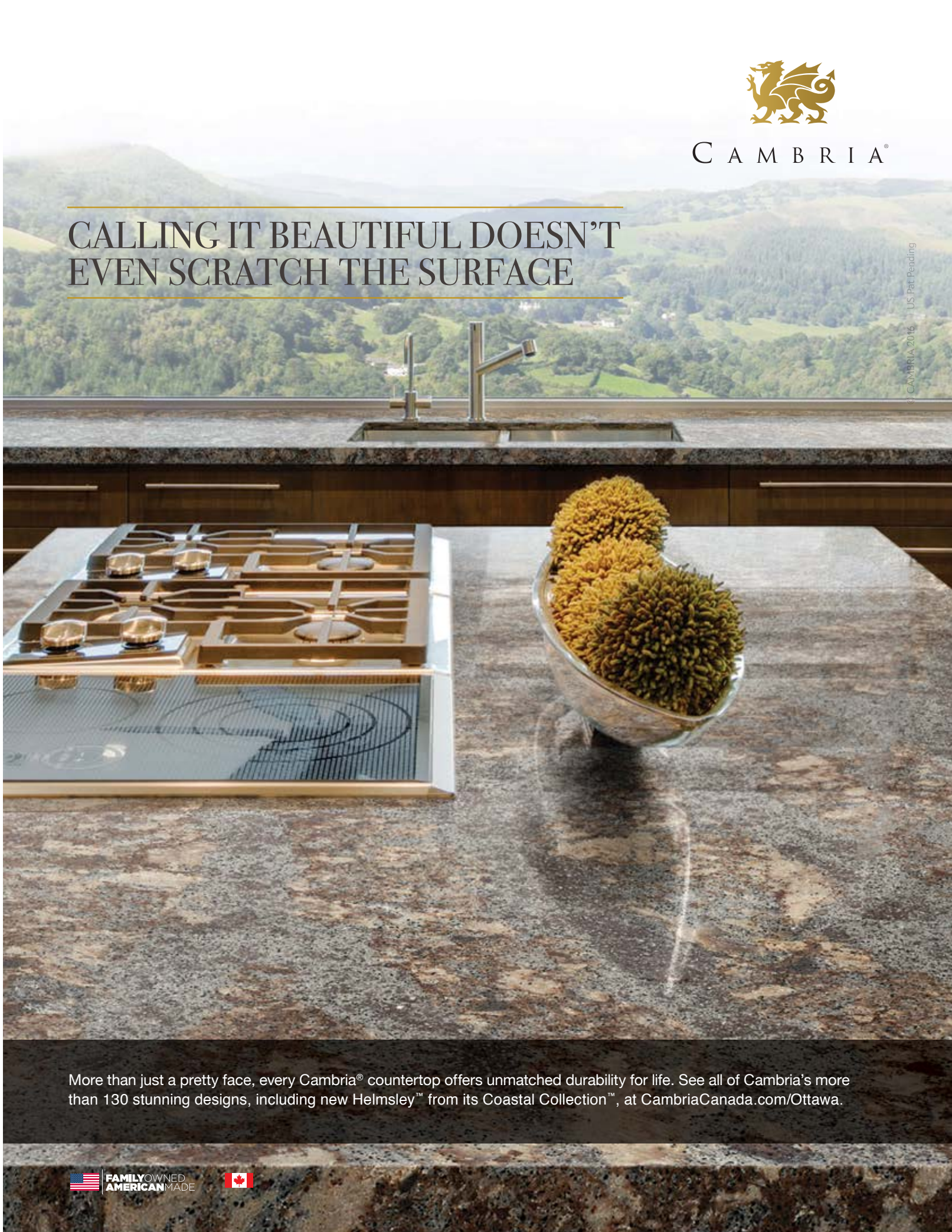
Super large tiles covering a large surface require expansion joints. All structures and materials expand and contract. Planning a strategic cut will make your super-size tile age gracefully with no cracking over time.

Now that you have the right information, you'll produce the right solution for you and your special project. **OH**



C A M B R I A®

CALLING IT BEAUTIFUL DOESN'T EVEN SCRATCH THE SURFACE



More than just a pretty face, every Cambria® countertop offers unmatched durability for life. See all of Cambria's more than 130 stunning designs, including new Helmsley™ from its Coastal Collection™, at CambriaCanada.com/Ottawa.





1

Warming Up TO WINTER

When the weather outside is frightful, check out these home and décor items that will simply delight you.

PHOTOGRAPHY **JEFF FRANCOEUR**



2



3

1 LIVING LIGHTING OTTAWA

Chandelier

A traditional, crystal chandelier adds bling to brighten the darkest days this season. The 12-light Cascade, by Feiss, comes in a warm heritage bronze finish that's sophisticated and suits any style.

1742 Bank St., Ottawa | 613.521.0234
1600 Merivale Rd., Nepean | 613.224.7817
2172 Robertson Rd., Bells Corners | 613.828.1177
livinglightingottawa.com

2 ASHLEY HOMESTORE OTTAWA

Throw Pillow

An abstract deer silhouette throw pillow puts the finishing touch on your seasonally-inspired décor this winter – ideal for cuddling up with on those colder days or nights.

530 West Hunt Club Rd., Ottawa
613.225.4000 | ashleyhomestoreottawa.ca

3 DALA DÉCOR

Lounger

Curl up with a hot bestseller and a warm drink in the Dala Décor-designed and manufactured Urban Lounger. The high-end polyurethane leather comes in your choice of tan, slate or ink blue and is also available as a love seat.

1790 Woodward Dr., Ottawa
613.693.0770 | daladecor.com

Continued on page 24



HAPPY HOLIDAYS . HAPPY HOLIDAYS

DESIGN BUILD RENOVATE

613-592-3103 613-286-4143 7jdesign.com



Building homes on the
strongest foundation.
Trust.

33rd ANNUAL
HOUSING DESIGN
AWARDS WINNER



Custom Homes
Designed for Living.
Built for Life.



YouTube youtube.com/greenmarkbuilders
613.898.5940
greenmarkbuilders.com

FRAMED!

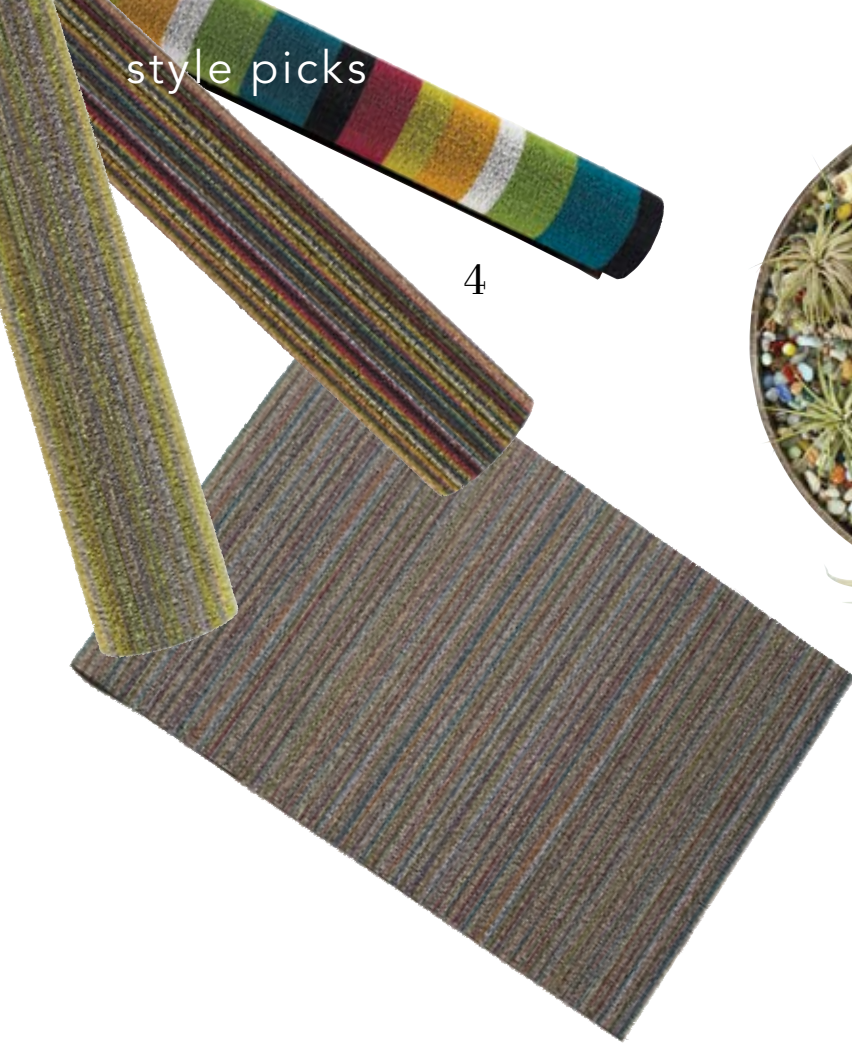
since 1976

FINE CUSTOM FRAMING
UNIQUE GIFTS & HOME ACCESSORIES

FREE PARKING

1075 BANK ST.(at Sunnyside)
613-730-0037 www.framed.ca

facebook.com/framedottawa



style picks

4



5



6

4 FRAMED!

Floor Mats

Chilewich floor mats are 100 per cent phthalate-free and contain 25 per cent renewable vegetable content – but they're also weather resistant and impermeable, making them perfect for Canadian winters. Available in four sizes and dozens of colours for your mudroom, laundry and entry, indoors or out.

1075 Bank St., Ottawa
613.730.0037 | framed.ca

5 BEYOND THE HOUSE

Air Plants

Indulge your green thumb this winter with exotic tropicals, unusual succulents and trendy air plants, seen here. And for those with a perpetual brown thumb, this nursery/gift store also carries a variety of botanicals.

144 Craig St., Russell
613.445.5214 | beyondthehouse.ca

6 ROMANTIC FIREPLACES AND BBQS INC.

Fireplace

The Maestro Collection of 12 new gas fireplaces creates works of art through fire. These decorative, non-heater-rated fireplaces are available in either vertical or square models

5380 Canotek Rd., Unit 7, Ottawa
613.748.1777 | romanticfireplaces.com OH



**FROM THE LOW
\$500,000's**
(INCLUDES LOT AND HST)

BUNGALOWS AND TWO-STOREY HOMES

1.5-3 acre lots in Beckwith

- Hardwood throughout main floor
- 9' Ceilings
- Most models include a 3-car garage
- Custom design at no charge
- The highest calibre of construction
- 20 minutes from Canadian Tire Centre



SALES CENTRE HOURS

Saturday and Sunday 12:00pm-4:00pm

107 William Hay Drive
(South off Hwy. 7 onto Hwy. 15, right
onto 10th Line, left into Maggie's Place)

[VISIT OUR MODEL HOME >](#)



Book a Consultation
613.253.7571

www.LuxartHomes.com

liveable COLOUR



Whether you're looking to bring a leafy green to your home for warm, year-round vibes, or you prefer a different accent hue, these tips for adding liveable colour can help you have fun with your palette – inspired by this cheerful Toronto Interior Design Group project.



STORY
YANIC SIMARD
PHOTOGRAPHY
VALERIE WILCOX

GET COMFORTABLE WITH COLOUR

For this project, we wanted to create a look that respected the heritage details of the home, but didn't feel too safe. This meant adding some colour and taking a few strategic design risks, one of which was a cool sectional sofa. The modular style meant being able to use a contrasting upholstery for a few sections, and a neutral fabric for the rest. It also leaves the option open for switching up the look later by rearranging the pieces or changing just a few covers.

Pro Tip: Green is near-neutral enough to withstand changing trends and mix with new accent colours in the future. This colour family in particular is a smart choice for accents you can live with for years to come.

USE A NEW NEUTRAL

Enriching your colour scheme doesn't always have to mean tossing in a new bold hue: adding a new neutral to your scheme will make the palette feel more diverse in a subtle way. Here, a cool mid-tone grey for the fireplace brick plays against the warm wood floors. This stone shade also helps soften the appearance of the black fireplace surround, plus, it's repeated in a cosy blanket, tying the entire palette further together.

BENJAMIN MOORE:
Chelsea Gray (HC-168)

Continued on page 28

CPI INTERIORS

DECORATING DEN INTERIORS®

WE LISTEN & BEAUTIFUL HAPPENS
613-599-5564 | www.cpiinteriors.ca

X-PRESSION

HARDWOOD FLOORS

Ottawa's Choice for Flooring

**Hardwood • Engineered
Laminate • Luxury Vinyl
Bamboo • Cork
Stairs • Tiles • Granite**

Free installation estimates on flooring, stairs, and stone fireplaces.
www.xpressionfloors.ca

SHOWROOM OPEN TO HOMEOWNERS, DESIGNERS, BUILDERS, CONTRACTORS & RENOVATORS

50 Colonnade Road, Ottawa ON
Tel. (613) 688-2080

STONE SELEX

LIGHTWEIGHT STONE VENEER FOR LIFE...

**CULTURED STONE
NATURAL STONE
BRICK VENEER
FAUX STONE SIDING**

Free installation estimates on flooring, stairs, and stone fireplaces.
www.stoneselex.com

design ideas

THROW YOUR PALETTE TOGETHER

Does the unique sofa seem like too much commitment? This is where accent pillows and throws come in. Not only are these changeable pieces a smart way to add colour without a big investment, but they can also tame a bold palette and connect non-matching areas. By piling the sofa with multi-tonal green and neutral pillows, the colours of the sofa sections become repeated and tied together. A striped blanket is then used to bring this accent hue to a neighbouring seating area for a sense of harmony.

Get the look: Use pillows and throws in related but subtly differing shades, and in a rich array of fabrics and textures, to integrate your accent hues throughout the space in a sophisticated way.



FRESHEN UP YOUR WINDOW TRIM

Using a fresh minty accent hue for your window trim truly brings the outdoors in. First, it adds a pop of greenery in an unexpected way, but in a small enough dose that it's not overwhelming, or hard to repaint if you want a new look down the road. Second, it beautifully frames the view outside. We finished the look with elegant in-window shades rather than draperies, to suit the architectural appeal and leave the elegant trim exposed.



MIX WOODS LIKE A NATURAL

Think all of the woods in one room have to match? Mixing wood tones is like mixing other neutrals – the subtle differences can actually enhance each other and your palette. However, there are rules that will help avoid clashes. In general, it's safe to stick to just cool (ashy/grey) woods, or warm (yellow/red/brown) tones, so they don't conflict. It also helps to use somewhat similar grains. In this room, all of the woods have small subtle grains rather than bold exotic ones.

Get the look: Mix a pale rattan accent chair, rich-stained or lacquered bentwood side chairs and a natural-edge coffee table for a perfectly eclectic trio that extends from light to dark. **OH**



interior design new construction
renovations project management

613.325.2468



Window fashions that have every style covered. **HunterDouglas**

Hunter Douglas offers a wide variety of window fashions in an array of fabrics, textures and colours. Contact us today. We're the Hunter Douglas experts, guiding you in the selections that'll make your home even more beautiful—whatever your style.

Gotcha Covered
613-406-0508
www.gotchacoveredcentralottawa.com



©2017 Hunter Douglas. All rights reserved. All trademarks used herein are the property of Hunter Douglas or their respective owners.6645956

Experience your dream shower!

Visit us at bathroomsfirst.ca/shower



Kitchens & Bathrooms First

5-850 Industrial Ave., Ottawa | 613-686-1522



ANCIENT HISTORY, *updated*

STORY **DIANE SAWCHUK**
PHOTOGRAPHY **GORDON KING**

Driving past this recently constructed home by **Patterson Homes** in the west part of Ottawa, you'd never think that parts of it date back some 90 million years.

With its traditional facade, and set among older brick and mortar homes on a quiet tree-lined street, there's no clue to suggest the stone that clads portions of this particular house was formed when prehistoric shells and corals were compacted and compressed during the Cretaceous Period.

Continued on page 32



A shimmering chandelier cascades down in a sunlit breakfast nook. Because this room stirs up memories of his own childhood home, where family members gathered for meals in a similar space, the homeowner shared that this was his favourite room in the house. **OPPOSITE:** Clad in Jerusalem stone, the interior wall of the two-storey foyer connects and continues from the home's exterior.

feature

This same type of stone was then used in construction for more than 3,000 years in Jerusalem – and more recently, quarried from ancient mines still in operation, loaded into a shipping container and transported to our nation's capital.

The homeowner was introduced to Jerusalem stone – the name applied to the various types of pale limestone, dolomite and dolomitic limestone quarried in the Jerusalem area – a few years previously, during a trip to that city. It's impossible to overlook it: following municipal laws, all buildings in Jerusalem are faced with this local stone, which comes in a variety of colours and characteristics. After he determined the material was a suitable construction material for Canadian building practices (the stone is

extremely dense) and would easily withstand the extremes in temperature encountered throughout our four seasons, the homeowner ordered one single shipping container to be delivered – more specifically, 22 metric tonnes.

With a design conceived in partnership with **Alex Diaz**, principal of the award-winning design firm **Art House Developments**, the homeowners partnered with **Mark Patterson** of **Patterson Homes** and **Simpli-Fi Homes** to build a home for their young family that offered balance on many different levels. Between the transitional exterior, combined with a modern interior – Ostaco Windows from **Bowen Windows** that still allow the homeowners to maintain a certain degree of privacy, and hard, solid stone used in conjunction with transparent,

Continued on page 34



ABOVE: A unique feature of the house, according to the homeowner, is the crown moulding crafted on site in plaster by Nevado Plaster, showcased here across the back of the house. **BELOW LEFT:** Adjacent to the appliance galley, a pantry is tucked away behind a pocket door and can also be entered through the mudroom, which offers access to the garage. **BELOW RIGHT:** Ash floors in Gingerbread, by Ontario-based Gaylord Hardwood Flooring, gleam in the late afternoon light. **OPPOSITE TOP:** Imparting ample light while still preserving privacy, a second-storey foyer window echoes the transom window over the Ostaco double-door system from Bowen Windows. **LEFT:** In this open floor plan, the kitchen's oversize island provides an anchor in the large area containing the dining area, family room and breakfast nook.





Framed by Jerusalem stone, the fireplace, from The Fireplace Center & Patio Shop warms the family room on cold winter nights.

refractive glass – there’s a lot of yin and yang going on with this house. The Jerusalem stone provides the continuum between the exterior and the interior, as it traverses from the exterior facade into the inside entry. There, rising up into the two-storey space, it catches the eye with its creamy white hue shot through here and there with light and dark brown veins. Sunlight draws out a soft glint from the stone, creating a facade that’s ever-changing throughout the day as the sun moves across the sky or with movement through the area and into the main living space. As much of the stone as possible was used in different applications around the home – for the fireplace installed by **The Fireplace**

Center & Patio Shop and a back wall in the lower level theatre room – with the remainder donated to a house of worship under construction in New Hampshire. “We allowed for 10 to 15 per cent waste, which is normal,” the homeowner says. “What we didn’t take into account was that the mortar would make up more than 10 per cent of the wall surface. So we had leftover.” The Jerusalem stone ties in with the modern look of the interior of the home, where glass and wood abound. Working with **Lisa Poirier** of **Westyle Interior Design**, the homeowners created a large open plan for public areas located on the ground level. Dark flooring by **Gaylord**

Hardwood Flooring is the canvas throughout the dining area, family room and kitchen and adjacent breakfast nook. Anchoring the space is a substantial island by **Atelier Louis L’Artisan Inc.**, who also supplied the kitchen cabinets. Lit by pendant lights over the island as well as the breakfast nook from **Living Lighting Ottawa**, and pot lights elsewhere, the space provides ample room for the family to congregate as well as entertain. Indeed, family played an important role in the creation of this home, with even the youngest members being involved in the process. The homeowner says that their daughter tossed 18 pennies into the foundation when it was poured, for good luck, on the suggestion of

Continued on page 36



LEFT: With one wall clad in Jerusalem stone, the powder room has a charming old-world aesthetic. Tucked away as it is in a passageway off the mudroom, the room doesn’t clash with the modern design found throughout the rest of the home. **BELOW:** Open risers lighten the look of thick treads in this custom-designed stairwell made of oak by Accurate Stairs and Railings. A vertical window emphasizes the height of the stairwell, which goes from the lower level, through the main level, to the upper level.



feature



A linen closet makes good use of the wall space between the en suite and the upper level laundry room.

a good friend and neighbour. And it was through other suggestions, offered by family members, that many of the unique features found throughout the home came about. A mudroom, accessed from the two-car garage, opens to a passageway containing a powder room to one side and a pantry to the other, allowing groceries to be put away immediately before sliding the pocket door open to step into the kitchen.

Upstairs, a linen closet straddles the space between the laundry room on one side, and the en suite, with its **Mondeau** fixtures, on the other. Each side sports doors to

Continued on page 38



A corner soaker tub from Mondeau holds centre court in the spacious en suite, from which an expansive walk-in closet can be accessed (a second walk-in closet is entered from the master bedroom). **ABOVE:** Concealed behind cupboard doors tucked in between the step-in shower and the water closet, a linen closet opens to reveal the laundry room on the other side.



DXV

MONDEAU™
BATHROOM & KITCHEN
SALLE DE BAIN & CUISINE



mondeau.ca     

OTTAWA
1282 Algoma

KANATA
20 Edgewater

GATINEAU
130 Jean Proulx



FAR LEFT: Outfitted with Mondeau bath fixtures, the main bathroom on the second floor is designated for the younger members of the family. **LEFT:** The decorative coffered ceiling in the home office located on the main level was designed by the homeowner himself. **BELOW:** A work in progress, the home theatre features one wall clad in Jerusalem stone.



This radio-controlled model airplane, flown by the homeowner when he was a youth, was embellished by the homeowners' children and now hangs in the playroom on the lower level.

conceal the novelty, where clothing and towels are sorted before being laundered and then stored away.

The homeowner says that even though there was a great working relationship with Patterson Homes on the project, the construction process was at times a little overwhelming.

"Every step of the way was a learning experience," the homeowner says. "For example, we thought there would be some risk in the cutting of the stone, but the quality of the cuts was fantastic. The challenge was to come up with a formula for the mortar to match the stone," explaining that in North America, standard colours of the material lean more toward the grey spectrum. When used with the creamy Jerusalem stone, the mortar stood out more than the stone itself, which was not a look the homeowner wanted. "We experimented making up different batches to get the colour right, which was quite time consuming, because you have to mix the mortar, then wait for a couple of hours until it dries before you can see the actual colour. It took about 30 batches before we got the perfect formula."

But challenges such as these are all in a day's work for Mark Patterson, who has been building distinctive custom homes for more than two decades.

"My job is to take what people dream up and put on paper, and make it a reality," Mark says. "The challenge for me is to take somebody's intent and make it a physical reality so that it actually looks like something that the homeowners intended, on the drawing." **OH**

What is your Renovation Goal?



Since 1989 Patterson Homes has built custom homes and helped clients fulfill their renovation goals. Our tradespeople are professional and flexible for those last minute changes which leads to a positive building experience!

mark@pattersonhomes.ca 613.850.6275 www.pattersonhomes.ca



GLASS & MIRRORS • GLASS SHOWER ENCLOSURES
GLASS RAILING SYSTEMS • SLIDING CLOSET DOORS
www.mirrorworks.com | sales@mirrorworks.com
613-746-4245



25 YEARS EXPERIENCE



©2017 Swarovski Lighting, Ltd

VA8322-48A

SWAROVSKI-LIGHTING.COM

VESCA

BRILLIANCE BY HAND

Living
LIGHTING
Ottawa

Visit us Online!
www.LivingLightingOttawa.com



1600 Merivale Rd.
(At Meadowlands Dr.)
Tel: (613) 224-7817

1742 Bank St.
(At Alta Vista Dr.)
Tel: (613) 521-0234

2172 Robertson Rd.
(Bells Corners)
Tel: (613) 828-1177



Blackstone is taking shape!

Blackstone is maturing and people are noticing. With so many stunning home options in such an attractive community, it's hard not to.

Distinctive features and an ideal location have made Blackstone popular with buyers who are seeking a family-friendly neighbourhood that offers natural elements, access to great schools and quality-built homes. These days, buyers have even more to be excited about now that the community is well beyond the half way point and on its way to completion within the next few years. Sidewalks, ponds and walking trails meander among Blackstone's paved streets and stylish homes from Cardel Homes – the award-winning Ottawa builder that's been bringing Blackstone to life since its launch in 2012.

Now in its fifth year, Blackstone has become one of the most sought-after addresses in Kanata South. Since the beginning, Cardel has had a vision for Blackstone that they knew would hit a chord with homebuyers. Located at Terry Fox Drive and Fernbank Road, only a short distance from the Queensway, Blackstone

provides a comfortable commute to downtown and direct access to the Trans-Canada Trail. Ample park space, walking and biking trails, and urban conveniences make Blackstone a desirable place to live. From first-timers and move-up clients to downsizers alike, this evolving community has something for everyone and continues to impress as more exciting products become available.

Each Cardel home in Blackstone is designed for real life and real people, resulting in truly exceptional homes. Features such as premium interior finishes, oversized windows and an Energy Star package are just a few things that separate Cardel from their competitors. Each Blackstone home is Energy Star Ready – providing more energy savings every year. With the guidance of Cardel's design team, customers can personalize their homes to reflect their personality and lifestyle.

Location

Kanata South

Builder

Cardel Homes

Development

Blackstone

House-type

- Single-family
- Townhomes
- Condos

Sales Centre

102 Westphalian Avenue, Kanata

Website

cardelhomes.com



Custom Single-Family Homes

With up to 2,800 square feet of space, Cardel's single-family homes in Blackstone feature open floorplans that encourage connections and exterior elevations that cast impressive curb appeal. Buyers can choose from bungalow or two-storey style plans and lot sizes up to 46 feet wide. You can also look forward to two brand new models coming this spring!



Popular Townhomes

Cardel's Blackstone lineup also includes a range of modern townhomes – the perfect middle-ground between their single-family and condominium counterparts. These townhomes are one of the most popular choices in Blackstone. In fact, the first phases of these models are already sold out. Luckily, Cardel is set to release phase four in 2018.



Luxurious Condos

Cardel gives new meaning to carefree living with their stunning Blackstone Kol condominiums. Not only are these condos maintenance-free they are also loaded with premium design features. Two fully-furnished show suites will be opening this December – just in time to foreshadow ten new units slated to be available for occupancy in January.

With so much to offer in Blackstone, it's easy to see why Cardel's award-winning designs have been so popular. Whether you're a young family starting out, empty-nesters downsizing or anywhere in between, you'll appreciate life at Blackstone.

To learn more about this remarkable community and many more, visit cardelhomes.com and register for updates.



OBTAINABLE LUXURY

STORY **DIANE SAWCHUK** | PHOTOGRAPHY **NICK LAFONTAINE**

THE COMPANY: Launched in Old Ottawa South in early 2017, **Ligne Roset Ottawa's** 3,000 sq. ft. showroom is dedicated to this based-in-France company's furniture, lighting, accessories and more. The high-end contemporary pieces are described as obtainable luxury by local owners Jacob Visutskie and Monika Durczak, who also own the successful Alteriors, located on Bank Street as well, just kitty

corner to Ligne Roset Ottawa. Artful furniture collections in a blaze of colour are complemented by decorative accessories, lighting, rugs, textiles and occasional items. All products are customizable in size, upholstery and finishes and Ligne Roset Ottawa's complementary in-home visits ensure best fit and optimal selection of any item purchased at the store, giving clients added value to the process of shopping.



BUY DESIGN: With her degree in architecture and his background in interior design and teaching Interior Design and Décor at Algonquin College, both Monika and Jacob live and breathe good design, so much so, that they're keen to share their knowledge. Jacob says whether you're in the market for Ligne Roset furniture or not, he'd like to encourage you to drop by the store, which carries only Ligne Roset products. "We love to talk design. So think of Ligne Roset Ottawa as a museum – a living museum, of design – where you can walk around and study pieces in our showroom," Jacob says. "The difference is, here you can sit in the chairs or sofas and try them out."



Monika Durczak and Jacob Visutskie



DEDICATED SHOWROOM:

Manufacturing its products by the Rhône River, France since 1860, Ligne Roset has collaborated with established contemporary designers and talented up-and-comers to create modern luxury for design-forward clients. All furniture, lighting and accessories found in the Ottawa showroom are exclusively Ligne Roset with the product's provenance clearly identifying the designer. Ligne Roset is also at the cutting edge of eco-friendly design through its commitment to strict environmental standards in both its manufacture and production.

GET THERE: 1165 Bank St., Ottawa
613.695.1165 | lignerosetottawa.ca **OH**

decorating

STORY **MELANIE REKOLA**
PHOTOGRAPHY **TARA CHATTELL**



have yourself a
SCANDI-STYLE
CHRISTMAS

Looking to simplify your holiday style? A minimalist Scandinavian style Christmas may be just the kind of uncomplicated holiday décor you are craving. Quiet your mind and transform your home into a chic winter wonderland without the Christmas chaos!

Nordic peoples know firsthand what a real winter is, making Scandi-style a natural fit for gorgeous Yuletide décor. It is rustic, minimalist and cosy all at the same time. Natural woods, a black-and-white colour scheme and handmade ornamentation provide the framework for a straightforward and inviting holiday home.

THE TREE

Initially, during the Winter Solstice, Norse pagans would bring entire evergreen trees into their homes to celebrate and sacrifice to the god Jul (now recognized as “Yule”). These massive evergreens were called Yule trees and it was believed that the spirits of the trees would bless the home’s inhabitants and provide mystical protection from night-faring spirits during those darkest of days.

The current Scandi-style Christmas tree is humble by comparison. A modest evergreen simply placed in a woven basket or other unassuming vessel is all that’s needed! Better yet, choose a few different sized trees, then group or smatter throughout your home for extra holiday allure (and possibly some additional mystical protection). There is a freshness found in the bare, standalone branches or add in just a few simple ornaments for hints of embellishment. Below the tree, instead of a typical tree skirt, place a faux fur rug or woolen mat. Add a few more woolly throws throughout your home for further cosiness. You’ll be surprised how much warmth these can add to a space.

THE TRIMMINGS

Anything found in the forest (and sometimes your own backyard) lends well to Nordic style. Let nature be your inspiration! An artfully placed stack of logs, a set of plain vine wreaths or a wooden bowl filled with pine cones all fit in seamlessly. A single windswept branch with a few berries placed on the fireplace mantel may be all that’s necessary as minimalist is the motto for classic Northern flavour.

THE TEXTURES

Handmade decorations and gift-wrappings made of natural materials such as fabrics, paper and jute offer the subtle textures required for any well designed composition. Simple cutouts of stars, snowflakes and hearts are classic shapes associated with Scandinavian flair. These can be used in lieu of a table runner, as gift tags or hanging ornaments. For the more adventurous sorts, 3D snowflakes can have just as many variations as do the natural ones. Fun to create and captivating when grouped and hung from a chandelier, these can be tied to a gift or anywhere else you need a bit of joy.

THE TABLE

A festive table comprised of a limited colour palette allows for appreciation of form and lets the all-important meal take centre stage. Layer on the whites, from linens to tableware, to achieve a gorgeous monochromatic effect. Tie a spruce twig with a simple ring of twine to create the perfect rustic napkin ring, adding a hint of holiday without going over the top. Plate garnishes made of evergreens are the perfect accessory as spruce, pine and cedar are all edible. Let your imagination run wild! Don’t neglect the kitchen either as family often flocks here. Display your baking triumphs alongside their pretty forms and the cookie cutters, too. Finish off both areas with lots and lots of plain white taper candles in various sizes for a magical celebratory feel.

Growing up, my relatives would often joke that “everyone knows Santa Claus comes from Finland.” Given my Finnish heritage I experienced this holiday style and subsequent traditions first-hand and well before its current popularity. Yet over time I still succumbed to the glittery charms of Christmas and collected a multitude of plastic ornaments and greeneries. But as so often happens, priorities change and life comes back full circle (along with some major recycling). Back to my roots, I have again found my forever holiday style of choice. **OH**

YARDS UNLIMITED
LANDSCAPING INC.

Design Office and Show Room
77 Holland Avenue (613) 721-8195
inquiries@yardsunlimited.com
www.yardsunlimited.com

Inspired outdoor living



COMMITTED TO QUALITY
Celebrating 35 years of custom homes & renovations
www.cadacon.ca

Proudly serving you for over 44 Years!

We respect your home. We answer your call.

Air Conditioning • Furnaces • Heat Pumps • Geothermal
Fireplaces • Air Treatments • HRV Units • Duct Cleaning
Maintenance Plans • Hot Water Heater* (rental/purchase)

Locally owned & operated!
Proudly Serving Your Community!

Almonte • Arnprior • Barrhaven • Bells Corners • Calabogie • Carleton Place
Carp • Constance Bay • Kanata • Kinburn • Lanark • Merrickville • Ottawa
Pakenham • Perth • Renfrew • Richmond • Smiths Falls • Stittsville

24 Hour Emergency Service • Free No Obligation Quote
613-257-8282 1-866-557-8282
carletonrefrigeration.com

FOR PEOPLE WHO DEMAND
THE BEST CUSTOMER SERVICE!



PART ONE

With an inviting front porch that begs you to set a spell and an updated look that romanticizes the classic farmhouse style, it's no surprise this two-storey home in Westboro, owned by Trish and JJ Hochrein, won the prestigious Greater Ottawa Home Builders' Association's (GOHBA) Peoples' Choice Award. Voting online and at the Ottawa Fall Home Show, the general public chose the modern farmhouse, built by **Gordon Weima Design Builder**, from among all entries received in 59 categories.

"The association's prestigious Housing Design Awards recognize the best custom homes, production homes and renovations in Ottawa each year. And this year, my company led the pack taking home seven awards in all," **Gordon Weima** says. "I'm blessed with the opportunity to use my creativity and God-given skills to build and renovate homes – homes where people live, raise families and

Continued on page 48

ABOVE: A spacious entry features a coat closet designed to resemble a built-in. **RIGHT:** Trish looks to play her best hand against son Griffin, while in the background JJ sources new recipes. The Hochreins' award-winning kitchen adjoins a family room warmed by a clean-faced, contemporary-look gas fireplace.



MODERN FARMHOUSE: A Story In Three Parts

STORY **DIANE SAWCHUK** | PHOTOGRAPHY **GORDON KING**



Winning top honours in the Custom Kitchen (241 sq. ft. or more) Traditional, \$75,000 and Under category at the 2017 GOHBA Design Awards, the well-equipped kitchen reflects JJ's love for cooking. **TOP LEFT:** Because the Hochreins entertain frequently, Trish designed this butler's pantry to keep the couple's dishware organized and easily accessible. **LEFT:** A servery connects the kitchen with the dining room. **RIGHT:** Builder Gordon Weima looks over the home's floor plans with homeowners JJ and Trish Hochrein along with son Griffin.

express their own passions. I also have the privilege of building lasting relationships with my clients. It is an honour to be recognized by my peers for the work I love to do.”

Designed by **Ardington + Associates Design** according to the homeowners’ precise specifications, the home’s exterior marries stone from **Merkley Supply Ltd.** with board and batten siding accented by cedar shakes from Fraser Wood Siding; inside, the layout is Trish’s vision for a home that’s warm and welcoming, yet, at the same time, functional and without wasted space.

A writer by profession, but an interior designer at heart, Trish was determined that every detail in the 3,000-plus sq. ft. house would be to

her exacting standards.

“This was my passion project. I’m a bit of a perfectionist and I don’t settle, so I obsessed over every single detail,” Trish says, describing how even choosing just the right hardware required at least 15 trips to the store. Or, since compromise was not an option, trim from different manufacturers was used in combinations to create the custom look just as she had envisioned.

“Everything you look at in this house is custom,” Trish says. To achieve those exacting standards, Trish found a kindred spirit in Gordon Weima. An award-winning builder with a background in architecture and design, Gordon earned a reputation over his 35 years

Continued on page 50





The Hochrein's dining room was designed for entertaining, with a servery and a butler's pantry storing their abundance of dishware located directly adjacent. **OPPOSITE, TOP:** The family room flows from the adjacent kitchen. **BOTTOM LEFT:** The mudroom provides a window seat and ample built-ins, crafted by Gerry's Custom Kitchens, for optimum organization. **BOTTOM RIGHT:** The exterior of this award-winning modern farmhouse.



in the business for uncompromising quality. Not surprisingly, Trish and Gordon developed a fluid partnership during the building process, where, Trish says, Gord could anticipate whether a certain component would fit her vision for the home. Gordon attributes the seamlessness of their collaboration to being “on the same wavelength.”

“Trish has a great eye, and an eye for detail,” Gordon says. “Having a design background, a lot of clients would rely on me to help them pick out hardware or flooring but Trish knew exactly what she wanted. She’s got a great flair for that.”

PART TWO

If, as the adage goes, the kitchen is the heart of every home, this kitchen is both the heart and the soul of Trish and JJ's home. Winning top honours in the Custom Kitchen (241 sq. ft. or more) Traditional, \$75,000 and Under category at the 2017 GOHBA Design Awards, the kitchen is spacious for entertaining and opens to a family room warmed by a clean faced, contemporary-look Town & Country gas fireplace from **High**

Energy Gas & Wood in Metcalfe.

While Trish was the talent behind the interior design and décor, JJ's mastery in the kitchen – “He’s a phenomenal cook!” says Trish – meant he was fairly involved in the kitchen design.

“I love to cook; I love that journey of finding a recipe, sourcing your ingredients; cooking is about making your guests happy,” JJ says, pointing out the kitchen, which takes up much of the floor space on the main floor, had to be functional as well as provide the perfect backdrop for their frequent entertaining. A butler's pantry, for example, was a necessity in order to keep their abundance of dishware organized yet easily accessible. And among the Thermador appliances from **Universal Appliances** is JJ's choice of range, with six burners, a grill and two ovens that can accommodate the most ambitious recipes for a houseful of guests.

Tesoro Bianco honed marble counters flow through to the servery connecting the kitchen with the dining room, all atop face-framed cabinets crafted by **Gerry's Custom Kitchens** (who also supplied

Continued on page 52



the laundry cabinets, bathroom vanities and built-ins). The hutch, created to look like a custom piece of furniture, stretches almost to the 10-foot high ceilings, providing ample storage to keep everything in its place.

PART THREE

“I think the whole master bedroom area should feel like a retreat, separate from the rest of the house, and we really wanted the en suite to feel like a hotel,” Trish says. Their winning en suite, honoured with Custom Bathroom (101 sq. ft. or more) Traditional, is a study in quiet luxury, following a traditional aesthetic. A peaceful palette selected from Benjamin Moore hues provides the perfect backdrop to creating a spa-like experience, where oriental white marble in a two-inch hexagon and herringbone pattern sourced from Saltillo

Continued on page 56



Trish's writing retreat doubles as a sitting room, and – with access to a Jack-and-Jill bathroom shared with the guest bedroom – can potentially be used as a supplementary guest bedroom.
ABOVE: The laundry room, in Benjamin Moore's Paper White, features custom cabinetry by Gerry's Custom Kitchens in Benjamin Moore's Van Courtland Blue. Counters are white pearl quartz from Emerald Tile & Marble.

1984

Installing handrails in the Greater Ottawa region for over 30 years.
new home builds | home renovations

OTTAWA VALLEY
HANDRAILING
COMPANY LTD

613.727.0680 | ottawavalleyhandrailing.ca
Come visit our showroom at 165 Colonnade Rd. S.

RIGHT: With clean lines and muted colours, the master bedroom is a study in simplicity, creating an oasis of relaxation. Accentuating the airy feeling, the ceiling is peaked with wood beams through to the master en suite. **BELOW LEFT:** Oriental white marble herringbone covers the floor of the oversize step-in shower. That detail is picked up again in the niche. **BELOW RIGHT:** The en suite was honoured as Custom Bathroom (101 sq. ft. or more) Traditional, at the 2017 GOHBA Design Awards.



“I think the whole master bedroom area should feel like a retreat, separate from the rest of the house.”



Visit our STÛV STUDIO at

HUBERT'S

Fireplace Consultation + Design

Visit our NEW location at 703-1290 Old Innes Rd.

www.hubertsfireplaces.com | hubertsfireplaces@outlook.com | 613-728-3786



With a spacious bedroom, walk-in closet enclosed by a pocket door and his own en suite, seven-year-old Griffin feels he scored the best room in the house. **BOTTOM LEFT:** The bedroom's window seat provides a cosy nook to chill with a device and some friends: his collection of stuffies. **BOTTOM RIGHT:** A reading nook on the upper-level landing features built-ins to keep things tidy.

Imports Inc. covers the floor, with an oriental white marble vanity continuing the ambience of serenity.

"What I appreciate about my husband is he understands my conviction, he trusts my judgement and my taste," says Trish. "He'll tell me if he really doesn't like something, but that doesn't happen often." Trish cites as an example one of the few times a compromise was necessary, when their son Griffin requested to have his bedroom ceiling painted in Hale Navy, a deep, dark blue that would recreate the night sky for him as he lay in bed. That colour appears instead on the feature wall of the seven-year-old's room, which contains a walk-in

closet with pocket door and a window seat to stretch out on. In his en suite washroom, the youngster got to help design his vanity and had a say in the choice of countertop (he chose a white shimmer quartz from **Emerald Tile & Marble**).

"Griffin loves our home, he thinks he scored the best room in the house," Trish says. But members of the GOHBA may think otherwise, having awarded two other rooms with top honours in their categories.

"We're beyond thrilled with the awards," Trish says. "I appreciate the fact that people noticed the detail and thought that went into every aspect of our home." **OH**



THE BEST HOME
IS YET TO COME...

▼
...YOURS.

GORDON WEIMA
DESIGN ▶ BUILDER

T: 613 850-1559
gord@gordonweima.com
www.gordonweima.com

2017 HOUSING DESIGN AWARDS | **CUSTOM BUILDER OF THE YEAR**

We build your bathroom from start to finish.



THE ELECTRICAL & PLUMBING STORE

1080 Ogilvie Road | 613-741-2116 **www.epstore.com** 31 Northside Road | 613-721-2116

double take

Books on display help create a worldly look with a colourful pop.

A comfy, custom upholstered sofa or slipcover in a colourful botanical pattern adds an unexpected touch.

1

2

3

4

5

6

7

8

9

PHOTO: JASON HARTOG

Bohemian GATHERING

Recreate this look in your own home.

1. IMAX WORLDWIDE HOME: Linen Oversized Pendant Light **2. KRAVET:** Upholstery & Multi-Purpose Fabrics with Botanical Patterns **3. NAPOLEON:** Ascent Multi-View Gas Fireplace – Peninsula Model **4. LENOX:** French Perle Crystal All-Purpose Glasses **5. LENOX:** French Perle Bead White Dinnerware **6. IMAX WORLDWIDE HOME:** Esteri Banana Leaf Trays **7. SAFAVIEH:** Hooper Indoor-Outdoor Stacking Armchair in Black & White **8. MAGNUSSEN HOME:** Bellamy Rectangular Dining Table **9. BERMEX:** Solid Birch Bench in Black Stain **OH**



Cozy up with a Napoleon fireplace this holiday season.



(613) 831-5056
2755 Carp Road, Ottawa
www.hardingthefireplace.ca

STORE HOURS:
Mon-Fri 9:00am - 6:00pm
Saturday 9:30am - 4:00pm



STAIR & RAILING
SYSTEMS

STAIR RECAPS

STAIR PARTS

HARDWOOD FLOORING

613-688-2800

URBANSTAIRS.COM

Come visit our showroom at
165 Colonnade Rd. S.



DARRYL SQUIRES, *CEO* *Modbox*

What was the highlight in 2017 for Modbox? In the first half of the year we received final zoning and heritage approval for our St. Charles Market project on Beechwood Avenue, a smart collection of horizontal homes and townhomes wrapping around the original church structure that was St. Charles Church for more than a century. Sales launched with a really strong reception.

What projects are you looking forward to in 2018? We are currently pinning down the details for breaking ground on the St. Charles Market project and moving ahead with sales on our Mechanicsville project of lofts inspired by the true (hard) lofts of Manhattan and some of the contemporary (soft) lofts in Toronto and Montreal. Our lofts offer a unique, industrial take on contemporary luxury. All the elements of true hard lofts combine with the comforts and efficiencies of well-built, modern dwellings in an entirely new build.

Any resolutions, personal or business, for the coming year? I am not really a resolutions person, but building our team and integrating the operations of Modbox more closely with our construction and project management company (TLPI) are major ongoing initiatives.



ROY NANDRAM, *PRESIDENT* *RND Construction*

What was the highlight in 2017 for RND Construction? This year, our company completed five R-2000 homes, which are all 53-60 per cent more efficient than the current building code. Among these homes, one has been labelled the first Net Zero Ready custom home in Ottawa, which means that, with the installation of solar panels, it will produce as much energy as it consumes. We also launched Farmside Green, a 10-home R-2000 development at the Experimental Farm. But our point of pride is winning four 2017 Greater Ottawa Home Builders' Association awards, including Green Custom Home of the Year. We've won two national housing awards, one for Production Home and one

for Custom Home – and we've also won two provincial awards, for Custom Home and for Renovation.

What projects are you looking forward to in 2018? We're really excited about starting construction on Farmside Green. And several custom homes and renovations are in the works.

Any resolutions, personal or business, for the coming year? We'll continue to improve our offering in production and custom homes and in renovations. The homes we build are generally unique compared to what is available from other builders. However, the pool of buyers for these types of homes is pretty small so we hope to find new customers whose vision aligns with ours.

Continued on page 62

BUILDING PAST AND PRESENT

Coming off a year where the weather didn't do anyone any favours, these local builders reflect on past accomplishments and look ahead to 2018.

STORY **DIANE SAWCHUK** | PHOTOGRAPHY **JEFF FRANCOEUR**



KIRK HOPPNER

FOUNDER AND CEO
Nautical Lands Group

What was the highlight in 2017 for your company? After 27 years of building award-winning retirement communities throughout Ontario, we launched our adult lifestyle community concept, known as the Wellings, in Ottawa. This award-winning vibrant community for adults 55-plus opens December 2018 on Hazeldean Road and Huntmar Drive in Stittsville. We are well over 50 per cent leased.

What projects are you looking forward to in 2018? We have started working on four additional markets in and out of the province of Ontario. We are wholly committed to bringing the affordable Wellings concept to many more markets in Canada. Our Wellings concepts have been globally awarded for design, affordability and management since we started introducing the concept and opened the first community in 2012.

Any resolutions, personal or business, for the coming year? My team at Nautical Lands Group is an excellent group of caring people who all understand we will always design, build and manage communities that we would be proud to live in ourselves and that foster a better way of life for seniors. In fact, I look forward to moving my mother into the Wellings of Stittsville this coming year.



JIMMY ORPHANOS & JEFF ORPHANOS, OWNERS
Omega Homes

What was the highlight in 2017 for your company? It wasn't so much of a highlight as it was a challenge, but we managed to overcome all the hurdles that the weather brought over the spring and summer and we got everyone closing on time. We build custom homes, which take more time than tract homes, and the almost continual rain didn't do us any favours. But our team pulled together, made a tremendous effort and it paid off in being able to satisfy our clients.

What projects are you looking forward to in 2018? We're already on track to be building 25 per cent more homes than we did in 2017. We're happy because as a company, you want to grow and not stagnate. Growth produces an energy that results in exciting looks and fresh ideas and that's what our customers look to us for.

Any resolutions, personal or business, for the coming year? It's exciting to meet new clients and work with them to make their dream home a reality. But it's all about balance, right? And one of our resolutions is to remember to create that balance and to set aside time to spend with our own families. **OH**

SEE OUR DIRECTORY FOR ALL CONTACT INFORMATION.

GET READY TO SELL

STORY **MEHREEN SHAHID**
ILLUSTRATION **SHEILA BRITTON**



Putting your house up for sale isn't just about listing it on the market. Experts say there's more to it than that.

GET FEEDBACK

"I think one of the first things people should do is to get a neutral opinion on their house on what is a good value to add," says Brendan Powell, broker and team leader at the BREL team, Sage Real Estate.

Getting an outsider to give feedback on what could make the house better helps homeowners decide on renovations that will be a real return on investment, he says.

"People often bring us in after renovating," says Powell. "That's usually too late because you can't do anything about it. If you spend \$100,000 on your reno, you can't add that much to the price. Just because you spent the money, it doesn't mean others will see the value, too."

SPRUCE IT UP

Be prudent in spending money, Powell says, but do fix the nitpicky items, such as bathroom or kitchen fixtures, creaky boards or crumbling brickwork.

Quick ways of sprucing up the inside of a house include a good cleaning, decluttering and a new coat of paint, preferably neutral colours, as they allow the house to look spacious and help buyers easily imagine their items in the same space.

Also, focus on getting rid of smells to which your nose is blind, be it cooking spices or pet odours, says Powell.

STAGE IT

If you still have no idea how to go about getting your house ready for sale, says Powell, real-estate agents can help stage or call in a professional stager for help.

Red Barrinuevo, professional home stager and interior decorator at Redesign 4 More says staging not only gives a fresh look to the house, but it also demonstrates effective use of space for buyers.

"If it's a living room, showcase it as a living room and remove other pieces that don't have to be there," he says. "For example, for a living room, all we need is a coffee table, a sofa and some chairs."

Another factor that helps determine a home's value and guides the preparation process for a house is its location, says Barrinuevo.

"If you're downtown, the buyer is probably someone working downtown and looking for a starter home. There, a small room could be staged as an office," he says, adding the quality of the furniture should reflect the value of the house. "If you're selling a house outside the city, an extra room could be showcased as a baby room."

IMPROVE CURB APPEAL

Make sure the exterior of the house is not neglected, Barrinuevo says. "That's the first thing buyers see."

Adding a fresh coat of paint on the garage door, taking care of the front yard and putting garbage bins in the back, instead of front, are just some items on the list. It should tell the buyer the house is well-maintained.

"The outside is like a teaser. If you get off on the wrong foot at the beginning, buyers will look for more faults," he says.

GET GREAT PHOTOS

Both Barrinuevo and Powell agree that once the inside and outside are taken care of, make sure a professional photographer takes the images shared for the listing.

"It has to be of professional quality, because this is one of the most expensive things you're going to sell," says Powell.

CONSIDER AN INSPECTION

Where most people focus on cosmetic fixes, it's also a good idea to get a pre-sale inspection done, says Graham Clarke, president of the Canadian Association of Home and Property Inspectors.

"It allows the homeowner to be aware of what conditions or deficiencies are going to show up when the buyer brings along an inspector," he says.

This helps reduce potential renegotiation after a potential buyer brings in an inspector.

"The more information you can disclose, the smoother the transaction will be and the more realistic the expectations of the buyer," says Clarke.

Some common items homeowners can fix before listing include safety issues that may arise from electrical, water or leakage issues and neglected porches and decks.

And it helps both the homeowner and their realtor understand what the real condition is and set a more realistic price for the market, he says. **OH**

Renovating? Decluttering? Staging your home?



RENOVATING?

Renovating is stressful. Storing your belongings doesn't have to be.

Store with Confidence

- Full humidity and climate control for protection
- State of the art security for your peace of mind
- **FREE Truck and Driver at MOVE-IN** for your convenience

DECLUTTERING?

Store your excess belongings and seasonal items with ease.

Experience the Dymon Difference

- A storage solution unlike anything you've seen before
- 24/7 access to the things you need
- Choose a convenient Dymon location near you

STAGING YOUR HOME?

A staged home sells faster. Let Dymon's world class storage solutions help you set the stage.

Storage is easy with Dymon

- Flexible month to month leases
- A full range of storage unit sizes
- Check out DymonMoves for moving assistance



(613) 842-9900

FREE Truck and Driver at MOVE-IN

8 Convenient locations across Ottawa

Coventry Road • Prince of Wales at Hunt Club • South Keys • Walkley at Heron
Orléans • Kanata Centrum • Carling at the Queensway • Greenbank at Hunt Club



online [Get more recipes at
ourhomes.ca/mag/cook](https://ourhomes.ca/mag/cook)

GINGERBREAD LOAF

with BROWN BUTTER
ORANGE GLAZE

RECIPE AND PHOTOGRAPHY **JENELLE MCCULLOCH**

SPICE UP YOUR NEXT GATHERING WITH THIS WINTER LOAF. WARMING SPICES ARE BAKED INTO THE CAKE AND TOPPED WITH A ZESTY BROWN BUTTER GLAZE.

LOAF

INGREDIENTS

- 1 ½ cups all-purpose flour
- 1 tsp nutmeg
- 2 tsp cinnamon
- 2 tsp ground ginger
- ½ cup butter
- ½ cup brown sugar
- ¼ cup molasses
- 1 egg
- 2/3 cup milk, warmed
- 1 tsp baking soda

DIRECTIONS

- Preheat oven to 300°F and line a loaf pan with parchment paper.
- In a medium bowl combine flour, nutmeg, cinnamon and ground ginger and mix well.
- In a small saucepan over low heat, combine butter, brown sugar and molasses until melted. Add to flour mixture and combine until smooth.
- Beat the egg and stir into the batter.
- Combine warm milk and baking soda together and mix into batter until smooth.
- Pour batter into prepared pan and bake for 60-70 minutes or until toothpick comes out clean.
- Let cool completely before adding glaze.

GLAZE

INGREDIENTS

- 1 cup icing sugar
- ¼ tsp vanilla
- 1 Tbsp brown butter
- 1-2 Tbsp milk
- Zest of one orange

DIRECTIONS

- To prepare brown butter, place butter in a saucepan over medium heat and cook until fragrant and golden brown. Remove from heat.
- Combine icing sugar, vanilla, brown butter, 1 Tbsp of milk and orange zest in a medium bowl and mix.
- The glaze needs to be thick and opaque but still pourable. If needed, add more milk to reach desired thickness
- Pour glaze evenly down the centre of cool loaf and let fall down the sides. **OH**



Custom Home Builders

We don't just build you a house, we build you a home!

Whether it's award-winning design, quality materials and craftsmanship or a truly trustworthy service provider, you'll get everything you could ever want from Omega Homes - including your dream home!

613-618-HOME (4663) omegahomes.ca

Fall in love
with your home
all over again.

Hindsight is great. But when it comes to your renovation, there's no substitute for a professional. Find a designer near you with DDA Canada's directory.

ddacanada.com/find-a-decorator



Decorators & Designers
Association of Canada



**FLOWERS TALK
TIVOLI**

282 Richmond Road., Ottawa
613.729.6911 | flowerstalk.ca

designers of residential,
commercial interior and
heritage adaptive re-use
#spacesforlife



TILBURY
INTEGRATED DESIGN

(613) 859-6282
troy@tilburydesign.ca
www.tilburydesign.ca

OTTAWA HOME
& REMODELLING
SHOW

YOUR

January
18 – 21

PROJECT

OUR

EXPERTS

EY Centre

The **Ottawa Home + Remodelling Show** is back from January 18-21, 2018 at the EY Centre. From HGTV Canada's Bryan Baeumler on The Main Stage to must-see features, plus more than 200 home improvement companies to choose from, we have everything you need to make your home goals happen. Satisfaction guaranteed – or the price of admission is on us!



Bryan Baeumler
HGTV's Bryan Baeumler

SAVE \$4
BUY TICKETS ONLINE

Promo Code:
OURHOME

Valid on regular adult admission only

f Home and Garden Events
@homeshows #OHS18
@OttawaHomeShow



OTTAWAHOMEANDREMODELLINGSHOW.COM

PRODUCED BY
EXPO
MEDIA

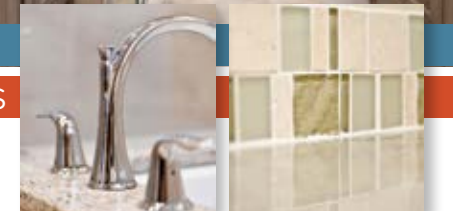
PROPERTY OF
MARKETPLACE
EVENTS

KITCHENS BATHROOMS BASEMENTS ADDITIONS SIDING EAVESTROUGH SOFFIT FASCIA WINDOWS ROOFING



HOME EXTERIOR SERVICES

HOME INTERIOR SERVICES



Our PROMISES are simple...

- Highest quality products
- Lowest manufactured cost
- Best client service in town
- Delivered on time, every time



Home Project Estimates **FREE!**

613-831-9802

www.albahomeservices.com

Come in, delicious bliss awaits!

Emulsify
The Oil & Vinegar Experience

Experience a delicate balance of flavours through our extensive selection of beautifully infused olive oils and superior balsamic vinegars, all the way from Modena, Italy without even leaving the city!

What are you waiting for? There's Ample to Sample!

1283-B Wellington Street West, Ottawa, ON. K1Y 3A6
(613) 695-6457 | www.EmulsifyOttawa.ca





PINE CONE FIRE STARTERS

PROJECT AND PHOTOS **TARA CHATTELL**

Pine cones dipped in clean-burning soy wax are an eco-friendly option to get your home fires burning. Leave them white or colour the wax and they become seasonal décor.

TOOLS & MATERIALS

Soy wax flakes, 2 lbs.

Pine cones, 10-13

Candle dye blocks, colours of your choice (optional)

Wired candle wicking

Wooden spoon

Small double boiler

Wax paper

Tinfoil

Knife

Scissors

NOTE: Any materials used in this project should not be used again for food preparation.



HOW-TO

1 PREPARE WORKSPACE

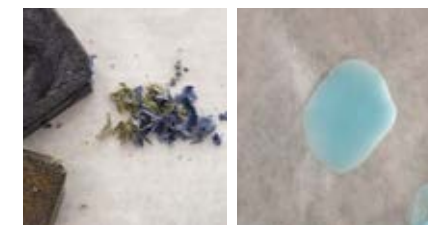
Cover your workspace with tinfoil to protect the surface from dripping wax – dipping will get messy!

Use wax paper to cover an area for pine cones to cool between dips.

2 MELT WAX

Add water to the bottom of a double boiler and fill the top pot with wax flakes. Place on stove burner and gently heat until wax is fully melted, stirring occasionally.

Using a knife, shave off small bits from wax dye blocks, add to your hot wax and stir until completely melted and blended.



The colour will look much lighter once cool. Test your colour by dripping wax onto wax paper and allow to cool. It doesn't take much dye to colour the wax, so add small amounts at a time until reaching the desired colour.

Once satisfied with the colour, remove from heat and allow your wax to cool for 15-20 minutes before starting to dip.

While wax is cooling, wrap pine cones with wicking.

3 WICK PINE CONES

Cut wicking into 12-inch lengths. You may want them longer, depending on the size of your pine cones.



Fold each piece of wicking in half. Tie a small loop at the fold to use both as a wick and to hold the cones while dipping.

Place the loop on the tip of a pine cone and begin wrapping each length in opposite directions around and between the scales. Finish by tucking in the ends (use scissors to push ends in).



4 DIP PINE CONES

Hold each pine cone by the wick loop and dip completely into the wax. If the pine cone is tall, turn on its side and use a wooden spoon to help fully coat the pine cone with wax. Remove the pine cone from the wax and allow excess wax to drip into the pot. Set on wax paper to cool for 10 to 15 minutes between each dip.



Repeat the dipping process three or four times until you're happy with the amount of wax on each pine cone.



After they dry, break off any excess wax from the bottom of your pine cone before dipping again. Recycle these pieces when you reheat your wax, which you will need to do once or twice during the process as the wax cools.

TIP: If the wax looks lumpy on the pine cone, fix it by heating the wax to a higher temperature and re-dipping the pine cone. You may need to give the pine cone an extra dip to rebuild the wax.



Once you're happy with the amount of wax on your pine cones, hold each pine cone upside-down and dip the tops to finish them off.

Allow pine cones to fully cool before transferring to a display container.



FIRE AWAY

When ready to use the fire starters, build a base of paper and dry kindling, then simply light the wick and place the pine cone under the kindling. Using two or three will start a roaring fire. Stay warm!





PROJECT AND PHOTOGRAPHY
TARA CHATTELL

We've come up with fun and simple ways to package holiday treats without breaking the bank. Add your own tag or card and gift away!

REUSABLE CONTAINERS



Not particularly crafty? No problem! Make the container part of the gift by choosing something fun and functional, like a small colander or pretty dish. To finish it off, wrap with cellophane and ribbon.

PUNCHED PAPER BAGS



Fold and add a cute clip.



Reverse side folds
Punch pattern along top.

Refold sides inward.

STITCHED PAPER PLATES



Punch holes along edges.

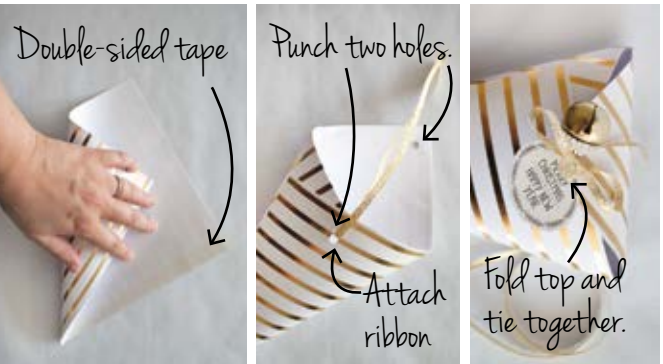
Use a stencil and paint to add pattern.
Stitch together with ribbon.

PAPER WRAPPED



Chip container
Double-sided tape

PAPER CONES



Double-sided tape

Punch two holes.
Attach ribbon

Fold top and tie together.

FOLDED PAPER CUPS



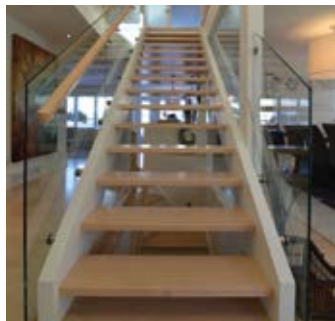
Slice off rim

Evenly-spaced 1-inch slits

Fold down

thrifty ways
TO GIFT
YOUR TREATS

OUR HOMES attracts the area's finest businesses to advertise in our pages, and utilize our unparalleled distribution and coffee-table appeal to market their products and services. We're making it easier for you, our readers, to become educated as you plan your home- and real estate-related purchasing decisions. View these business ads online at ourhomes.ca/ottawa. The listings below are organized alphabetically by industry.



VALIA DESIGN INC

Valia Design Inc is an Ottawa based interior design company.

Valia Design specializes in Design Consultancy Services as well as Project Management for Renovations, New Constructions, Residential and Commercial Projects.

We also provide staging for realtors and customers in preparation to sell their home. Whether transforming your residence to sell, or planning a renovation, our team can assist with your transformation.

Our high-quality standards and commitment to positive client relationships drives us to deliver creative and functional spaces. Valia Design strives for superior quality in our professional care and attention to details, personal service, materials and craftsmanship.

Careful planning, coordinating and scheduling must be well orchestrated to bring all aspects of the design process together to deliver a successful finished product. Budgeting and cost management are also an important part of the process.

A successful project always starts with a plan. Valia Design focuses on your specific needs and vision to help create a home that speaks to your lifestyle.

We pride ourselves not only in our clients' satisfaction, but in always exceeding their expectations.

613.325.2468

(Please see ad on pg 29)



NORMERICA

Since 1979, Normerica has created the highest quality timber frame structures across Canada, the United States, and around the world. We began with a simple philosophy: to marry traditional craftsmanship with the latest engineering and building science, delivering to our customers their ultimate dream homes.

Our decades of experience coupled with our expert in-house design team allow us to offer a high level of customization and design flexibility – a key advantage of timber frame construction. In fact, most of our customers begin with one of our designs as inspiration, but truly custom-design a home to meet their own unique tastes. Customization is the new standard at Normerica.

Over the years, thousands of discerning customers have trusted us with their vision – most of those coming to us from referrals. We believe that's due to our ironclad commitment to service excellence, and our ability to offer timeless designs that deliver integrity, harmony and warmth.

Whether we're designing a simple addition to a family home or a 50,000 square foot Olympic facility, we bring the same care and attention to detail to everything we do. No matter your project, you can be confident that Normerica will help bring your dream to life.

1.800.361.7449

NORMERICA.com



STÛV

Stûv products stem from the spirit of innovation and ongoing commitment by finding ways to improve the technical performance on all appliances which boosts the satisfaction that the user receives from day-to-day use. Stûv products do not have to submit the architecture. They respect it and inspire new possibilities for it. The contemporary look and simplicity of our products means that they blend with any kind of interior.

Ten years ago, Vincent Boudreau, who was intrigued by the beautiful stoves and fireplaces he had seen in a European architecture magazine, travelled from Quebec to Belgium to visit Stûv's facilities. It was love at first sight! He saw a business opportunity in the ingenious streamlined stoves and fireplaces that had not yet reached the North American market.

Today, Stûv America offers 35 models in wood and gas and has more than 90 dealerships all across North America. In 2016, with its principal partner (Stûv sa), Stûv America bought a factory in Quebec to produce within the next two years all Stûv products here in Canada.

Vision on the fire, efficiency and timeless design are the main characteristics of all Stûv models.

Vision on the fire, efficiency and timeless design are the main characteristics of all Stûv models.

(Please see ad on pg 6)



WELLINGS OF STITTSTVILLE

Rightsize your life at the Wellings of Stittsville, opening in December 2018. This unique apartment community was specifically designed for vibrant adults 55+, and features many services found in the best hotels in our much-loved magazine. At five-storeys high, the two-storey atrium is at the heart of this lifestyle community, which has been meticulously designed for comfort and convenience. 185 apartments are offered at the Wellings, with rent starting at \$1995 per month.

"We are over 55% reserved and have been very well received since launching The Wellings concept this May. There is nothing like this in the region," says Kevin Pidgeon, president and COO of the Nautical Lands Group, building award-winning communities for more than 25 years. "Our company has always been on the forefront of innovation for senior housing, and this is our fourth Wellings concept. Offering a healthy social life, the Wellings' concept offers generous-sized apartments, complete with appliances, as well as a high quality evening meal prepared by chefs, and served by friendly staff in the atrium."

On site is a health and wellness gym, licensed pub and restaurant, underground parking, 24-hour concierge and VON office, and health services as required. Residents purchase which services they want.

Choose to Live Well at Wellings, a vibrant new community.

The Wellings of Stittsville
Leasing Centre
5709 Hazledean Rd,
Stittsville | 613.581.2481
wellingsofstittsville.com
(Please see ad on pg 15)

ARCHITECTS/ARCHITECTURAL DESIGN

Normerica, 74
Tilbury Integrated Design, 67

AUCTIONS

Spooner Auctions, 17

BUILDERS

Cada Construction, 45
Cardel Homes, 40&41, 80
Gordon Weima Design | Build, 57
Greenmark Builders Inc., 23
HN Homes, 3
Les Terrasses Francesca, 18
Luxart Homes, 25
Modbox – St. Charles Market, 13
Normerica, 74
Omega Homes, 67
Patterson Homes, 39
RND Construction, 8
Valia Design Inc., 29, 74
Wellings of Stittsville, 15, 74

COUNTERTOPS/GRANITE/CONCRETE & STONE/TILE

StoneSense, 4
The Stone Fabricator, 2
Urban Quarry, 21

CUSTOM CABINETS

Tailored Living, 19

CUSTOM FRAMING

Framed!, 23

DESIGNERS/DECORATORS

7J Design, 23
DDA (Decorators & Designers Association of Canada), 67
Decorating Den Interiors, The CPI Team, 27
Valia Design Inc., 29, 74

ELECTRICAL

The Electrical & Plumbing Store, 57

FIREPLACES & STOVES

Carleton Refrigeration, Heating and Air Conditioning, 45
Harding the Fireplace, 59

Hubert's Fireplace Consultation + Design, 17, 55
Romantic Fireplaces & BBQs, 79
Stûv, 6, 74

FLOORING

Barwood Flooring, 11
X-Pression Hardwood Floors, 27

FLORISTS/FLORAL DESIGN

Flowers Talk Tivoli, 67

FOOD/DRINK/CATERING/BUTCHERY

Emulsify, 69

FURNITURE & HOME DÉCOR

Ashley HomeStore Ottawa, 7
Decorating Den Interiors, The CPI Team, 27
Ligne Roset Ottawa, 5

GLASS & GLASS DESIGN

Mirror Works, 39

HEATING & COOLING

Carleton Refrigeration, Heating and Air Conditioning, 45

HOME IMPROVEMENTS/RENOVATIONS

Alba Home Services, 69
Cada Construction, 45
Gordon Weima Design | Build, 57
Greenmark Builders Inc., 23
Omega Homes, 67
Patterson Homes, 39
RND Construction, 8
Tremblay Renovation Inc., 77
Valia Design Inc., 29, 74

HOME ORGANIZATION

Tailored Living, 19

KITCHEN AND BATH

Kitchens & Bathrooms First, 29
Mondeau Bathroom & Kitchen, 37
Paradise Bath and Kitchen, 11

LANDSCAPE DESIGN/LANDSCAPING/LAWN & GARDEN

Yards Unlimited, 45

LIGHTING

Living Lighting Ottawa, 39
Marchand Lighting & Electrical, 16
The Electrical & Plumbing Store, 57

MOVING/SELF STORAGE

Dymon Storage, 65

NEW HOME COMMUNITIES

Cada Construction, 45
Cardel Homes, 40&41, 80
Farmside Green – RND Construction, 8
Gordon Weima Design | Build, 57
Greenmark Builders Inc., 23
HN Homes, 3
Les Terrasses Francesca, 18
Luxart Homes, 25
Omega Homes, 67
St. Charles Market – Modbox, 13
Wellings of Stittsville, 15, 74
William's Court Luxury Apartments, 79

NON PROFIT ORGANIZATIONS

DDA (Decorators & Designers Association of Canada), 67

PAINTING & DECORATING

Benjamin Moore, 9

PLUMBING

The Electrical & Plumbing Store, 57

RAILINGS, STAIRS & TRIM

Ottawa Valley Handrailing Company Ltd., 53
Urban Stairs & Rails, 59

SPECIAL EVENTS

Ottawa Home & Remodelling Show, 68
Parent & Child Expo – Parenting Times, 77

WINDOW FASHIONS

Gotcha Covered, 29

WINDOWS & DOORS

Mirror Works, 39

OUR HOMES is committed to ensuring the businesses above appear under the correct headings. To make a correction, or to have your business listed under more than one heading, please email beth.charbonneau@ourhomes.ca. To have your business listed in our Home Resource Directory, call us to advertise at 613.519.1609 ext. 100.

RECIPE AND PHOTOGRAPHY
JENELLE MCCULLOCH



online Get more recipes at ourhomes.ca/mag/cook

Pappardelle BEEF RAGU

THIS TRADITIONAL DISH IS MADE UP OF BEEF STEWED AND SHREDDED INTO A TOMATO SAUCE AND SERVED UP OVER BEAUTIFUL EGG NOODLES.

INGREDIENTS

- 1 ½ - 2 lb pot roast
- Cooking oil
- Salt and pepper
- 1 cup onion, diced
- 2 cloves garlic, minced
- 1 cup carrot, diced
- 1 cup celery, diced
- 2 sprigs fresh rosemary
- 3-4 sprigs fresh thyme
- 1 bay leaf
- 1 cup red wine
- 1 cup beef stock
- 1 28-ounce can plum tomatoes
- Pappardelle noodles, to serve
- Parsley, to garnish

DIRECTIONS

- Preheat a Dutch oven or covered, thick-bottomed stewing pot on the stovetop over medium-high heat.
- Quarter the pot roast and season generously with salt and pepper.
- Coat the bottom of the pot with oil and sear the meat on all sides until a crust forms. Once seared, remove the pieces from the pot and set aside.
- Add another 2 Tbsp of oil to the pot and add onion and garlic then stir. Add carrot and celery and cook for 3-4 minutes until soft. Add herbs and stir until fragrant. Add wine and simmer until reduced by half.
- Next, add meat along with the beef stock and tomatoes. Stir, bring to a simmer, then turn heat to low and cook covered for 2 hours.
- Remove meat to a plate and use two forks to pull beef apart into shreds and chunks.
- Add meat back to pot and cook over low for another 10 minutes.
- To serve, cook the pappardelle noodles according to package directions. Reserve water.
- In a saucepan add a few ladles of beef ragu, some noodles and a splash of the pasta water. Simmer until the noodles are coated and the sauce thickens.
- Garnish and enjoy! **OH**

Specializing in Kitchens & Bathrooms

TremblayRenovation.com We make dreams a reality with 3D design. **613.795.4139**

OTTAWA'S MOST POPULAR PARENTING & KIDS SHOW

Birthday Parties • School Events • Sport Team Events • Corporate Events • Community Events

GAMES ON TRUCK
613-829-9662
Mobile Video Game Truck
XBOX • Wii

Over 24 Play Zones for Kids!

Special Guests announced January 1st!

FREE Parking

Visit with over 125 exhibitors!

Meet & Greet Princesses

Ottawa Parent & Child expo
play Learn Explore

April 21 & 22, 2018

NEPEAN SPORTSPLEX
1701 Woodroffe Ave., Ottawa
Entrance 4 & Entrance 1

TO BOOK YOUR BOOTH OR INSERTS email peter@OttawaParentingTimes.ca or call 613.656.3430 ~ See www.ParentandChildExpo.ca for more details

finishing touch



HAVE YOU ANY WOOL?

Surround yourself with cosy-warm wool. Not just for sweaters and socks, wool is the hottest winter textile for your home.



1. RESTORATION HARDWARE: Milo Baughman Model #149 1953 Tibetan Wool Chaise 2. BYRD & BELLE: Hexagon Wool Felt Coasters 3. ABBOTT: Merino Acorn Cluster Ornament 4. CB2: Tailor Storage Box with Lid 5. KLIPPAN: Man & Wife Wool Throw 6. BLU DOT: Neat Ottoman; Double Tuck Felt Basket 7. JAIPUR LIVING: Alpine Rug in Bungee Cord & Moon Beam 8. PINK AND BROWN: Axle Chair 9. SOUL COMFORT SHEEPSKIN & SHEEP WOOL: Pet Bed 10. MOSS CREEK WOOL WORKS: Pure Wool Dryer Balls 11. OBASAN: Banff 3.0 Winter Comforters OH





Find your best home with us.

William's Court in Kanata Lakes has some amazing features:

- 4 STAINLESS STEEL APPLIANCES
- IN-SUITE WASHER/DRYER
- 9 FOOT CEILINGS
- HEATING / AIR CONDITIONING
- STORAGE & BICYCLE LOCKERS
- INDOOR SALTWATER POOL
- STAFFED FITNESS CENTRE
- PUBLIC TERRACE BARBECUES
- CLUBHOUSE LOUNGE
- GAZEBO GARDEN / LAKES & TRAILS
- SOCIAL ROOM

Contact us for more details:
Tel: (613) 435.4950
kanataleasing@killamproperties.com



Killam
APARTMENT REIT

William's Court

LUXURY APARTMENTS





WE'VE MOVED!

Come visit our
Fireplace
Wonderland



ROMANTIC FIREPLACES & BBQs INC.

Family owned and operated
— NEW LOCATION —
5380 Canotek Rd., Unit 7, Ottawa
613.748.1777
www.romanticfireplaces.com

Find your
happy place.

See what's *new* at Cardel.



CARDEL
HOMES

CARDELHOMES.COM