

MID-SUMMER 2018

STYLE ■ COMFORT ■ IDEAS ■ REAL ESTATE

ourhomes

PETERBOROUGH KAWARTHA LAKES COBOURG DURHAM REGION PORT HOPE

WHITEVALE'S RURAL RENO

HINTERLAND
STYLING



RUB-A-DUB
TUBS

MELT-IN-YOUR-MOUTH
TREATS

INSPIRATION
on Jack Lake

Let's Build
a Legacy Together



Visit our Design Centre for inspiration.

13 Lindsay Street South
Fenelon Falls 705.887.4773
rwhconstruction.ca



FURNITURE | DESIGN

newly renovated showroom

twoheyhome

129 Aylmer Street North Peterborough
705.748.9551

twoheyhome.com



2019 ASCENT



SUBARU

Confidence in Motion

INTRODUCING MORE SPACE.
MORE POSSIBILITIES.
MORE FAMILY-SIZED FUN.
ARRIVING SUMMER 2018.



Introducing the all-new, three-row 2019 Subaru Ascent. This mid-size SUV features a turbocharged 2.4L SUBARU BOXER engine that creates the power of a 6-cylinder with the efficiency of a 4-cylinder. The groundbreaking Ascent comes standard with an arsenal of advanced safety systems, including EyeSight® Driver Assist Technology. The Subaru Ascent: everything Subaru knows about engineering vehicles and everything you've always wanted in a three-row, family-sized SUV. Visit ontario.subarudealer.ca or your local Subaru Dealer for more information.

SYMMETRICAL
AWD

 **EyeSight**®
Driver Assist Technology



Vehicle shown solely for purposes of illustration, and may not be equipped exactly as shown. ‡See Owner's Manual for complete details on system operation and limitations. Subaru, Ascent, and SUBARU BOXER are registered trademarks. Eyesight® is a registered trademark of Subaru Corporation.



CUSTOM GRANITE • QUARTZ • SOAPSTONE • MARBLE

Onsite Warehouse

Over 500 Slabs To View



Outdoor Barbeques



Custom Shower Walls

1577 8th Line, Lakefield

www.delraygranite.ca

705-652-0651

delray@nexicom.net



RICH COLOUR THAT STAYS TRUE OVER TIME.

Find expert service and every colour you can imagine at your locally owned Benjamin Moore® retailer.

CAMPBELLFORD **Village Paint & Paper** 22 Doxsee Ave S | 705.653.0179 | benjaminmoore.com

COBOURG **Cobourg Paint & Wallpaper** 34 King St W | 905.372.3841 | benjaminmoore.com

NEWCASTLE **Newcastle Home Décor & Design** 80 King Ave E
905.987.1575 | newcastlehomedecor.net

PETERBOROUGH **Charlotte Paint & Wallpaper** 451 George St N | 705.743.5742
downtownptbo.ca/business/charlotte-paint-wallpaper

PORT HOPE **Colour Concepts** 48 Mill St S | 905.885.8355 | colour-concepts.ca



©2018 Benjamin Moore & Co., Limited. Aura, Benjamin Moore, Paint like no other, and the triangle "M" symbol are registered trademarks and Colour Lock is a trademark of Benjamin Moore & Co., Limited.

**When you decide it's time to build
your dream, see Wayne at:
Chemong Home Hardware
Building Centre**



The Cariboo - 1,888 sq ft



The Cariboo is designed to capture breathtaking vistas with the abundance of glass, porch and optional decks on the front of this home. Intended for a sloping lot, the walkout basement provides convenient access and plenty of light to the lower level.



Choose from any of our unique Beaver Home & Cottage designs or bring in your own ideas and we will design your dream home for you.

www.beaverhomesandcottages.ca

Wayne Sellars 705.748.9111 x226 wsellars@chemonghbc.com
Chemong Home Hardware Building Centre
1699 Chemong Road, North, Peterborough

2018 Beaver Home & Cottage PLAN BOOK is now available. Many new and exciting plans to choose from!



Our kitchen was
buzzing with excitement.



Our party last weekend was a huge success. Everyone had a wonderful time. The star of the show was our new stained glass tile back splash that **Focus Flooring** had just installed. Everybody was talking about it, the way it shimmers, the depth of colour, the workmanship, we couldn't be happier.

If *spectacular* is what you're aiming for then you need to get in and see the folks at
Focus Flooring Centre



774 Rye Street Unit 6
Peterborough

705.876.0795

focusflooringcentre.com

hardwood . ceramic . carpet . vinyl . laminate



REGIONAL PUBLISHERS Jamie Jefferson
Georgette McCulloch
REGIONAL MANAGING EDITOR Walter Franczyk
REGIONAL PRODUCTION MANAGER Marilyn Reid
MARKETING & ADVERTISING Lisa Leonard, 705.750.7736
lisa.leonard@ourhomes.ca
Lisa Merrell, 705.445.5065 x200
lisa.merrell@ourhomes.ca

REACH US EASILY: firstname.lastname@ourhomes.ca

OUR HOMES is a registered trademark of OUR HOMES MEDIA GROUP INC.
OUR HOMES Peterborough Region is published four times a year.
OUR HOMES is distributed via free pick up to residents of Peterborough, Kawartha Lakes, Northumberland and Durham Region. OUR HOMES is printed quarterly and available for free pick up at high traffic locations throughout the region. OUR HOMES is distributed throughout select B&Bs and hotels, Sobeys and to select business leaders via direct mail.
Please send all letters and/or feedback to OUR HOMES Magazine, 25 Elgin St., Collingwood, Ontario, Canada L9Y 3L6. Or email us at editor@ourhomes.ca.
All letters received are subject to editing for grammar and length.

OUR HOMES MEDIA GROUP INC:

EDITORIAL	PRODUCTION
EDITOR-IN-CHIEF Georgette McCulloch	PRODUCTION DIRECTOR Lynn Derrick
ASSOCIATE & WEB EDITOR Laurel Fortin	PRODUCTION MANAGERS Julia Dempsey, Kelly Donaldson, Marilyn Reid, Tracy Shuttleworth
MANAGING EDITORS Nancy Belgue, Adrienne Brown, Walter Franczyk, Mary Hatt, Gina Makkar, Sara Martin, Tiffany Mayer, Georgette McCulloch, Tamarisk McNalty Stephens, Melissa North, Merrilyn Patterson, Diane Sawchuk	OPERATIONS MANAGING DIRECTOR, SALES & MARKETING Jamie Jefferson jamie.jefferson@ourhomes.ca MANAGING DIRECTOR, OPERATIONS Georgette McCulloch
ART	CLIENT RETENTION & DISTRIBUTION Lisa Merrell
ACTING ART DIRECTOR Robynne Sangiuliano	ACCOUNTING Donna Duggan
ASSOCIATE ART DIRECTORS Sheila Britton, Michelle Losier	ACCOUNTS RECEIVABLE Tyler Annette
DIRECTOR OF PHOTOGRAPHY Jason Hartog	

CONTRIBUTORS
Tara Chattell, Harold Clark, Walter Franczyk, Jason Hartog, Dawn McConnell,
Jenelle McCulloch, Jo Anne Mulvaney, Dolores Pian, Melanie Rekola,
Yanic Simard, Cynthia Soda

Advertisements and the content, including photos, of advertisements published within OUR HOMES magazine are supplied solely by the advertiser and neither the publisher nor OUR HOMES Media Group Inc. accept responsibility for opinions expressed in advertisements or for copyright issues with regards to photos, advertising copy and advertisements, nor shall they be held liable thereby. By act of reading this publication, all advertisers and readers agree to indemnify and hold harmless both OUR HOMES Media Group Inc., and the publisher thereby. Copyright ©2018 OUR HOMES Media Group Inc. All rights reserved. Reproduction without permission is prohibited.

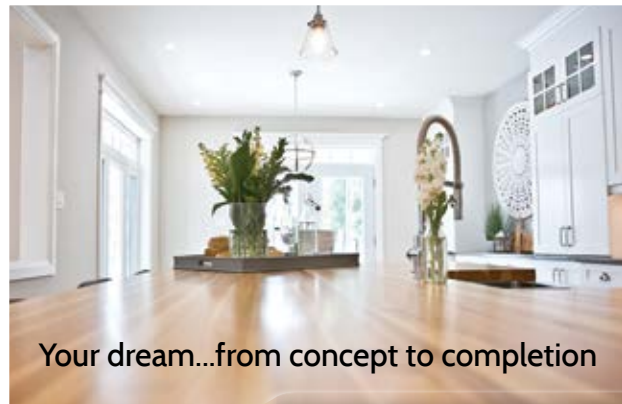
OUR HOMES CAN BE FOUND IN THE FOLLOWING MARKETS:
• Barrie/Ontario/Midland • Grey Bruce • Hamilton • London
• Muskoka • Niagara • Oakville/Burlington/Mississauga • Ottawa
• Peterborough • Southern Georgian Bay • Toronto & York Region
• Region of Waterloo • Wellington County/Orangeville/Caledon • Windsor



stûv¹⁶

stuv-stoves.com | Stûv 16-H

editor's note



Your dream...from concept to completion

BIRCHVIEW
DESIGN



Residential | Commercial | Cottage

705.740.3988
www.birchviewdesign.com



VISITING A HERITAGE HOUSE

for a story in this edition of OUR HOMES ignited a flashback. While driving to Whitevale in north Pickering, I was puzzled to see so much farmland rimmed by low, plastic fences, the kind that prevent muddy water from construction sites flowing into nearby streams. The black fences edged field after field.

It wasn't until I arrived at the 160-year-old heritage house, restored by Kate Campbell and her husband, Dave Coleman, that I learned

the plastic fences are site preparations for Seaton, a future community, originally planned as the service centre for a new airport the federal government tried to establish in Pickering 45 years ago.

The attempted airport was a disaster foretold. The federal government, in 1972, expropriated 18,600 acres of Canada's richest farmland in Pickering, Markham and Uxbridge for an airport that wasn't needed. Faced with stiff local opposition, governments cancelled plans for the airport. But by that time the land grab was a *fait accompli*.

People had been forced out of their homes and off the land. Hundreds of small farms vanished. Many homes expropriated for Transport Canada were abandoned, neglected and eventually torn down.

Kate and Dave's house was one of the farmhouses originally expropriated by the government. Luckily, it was returned to private ownership.

After three years of hard work, the couple have preserved it as a part of local history and a great example of built heritage.

It's a shame so many other farms, homes and barns on the airport lands have been lost to the misguided march of progress.

In the early '70s, I attended a weekend of music and speakers at a People or Planes festival on a farm property near Brougham. I even bought one of those T-shirts, silk-screened with a black silhouette of a jumbo jet, surrounded by a bright red circle and a line crossing through the aircraft.

It's surprising and sad that so many years later local farmers still have to fight to preserve farmland and their way of life.

Walter Franczyk

Walter Franczyk, Managing Editor
walter.franczyk@ourhomes.ca

Follow us    Subscriptions subscribe@ourhomes.ca

online Get more at ourhomes.ca



Cabinetree
kitchen cabinets

Beautiful Kitchens
Built In Peterborough

705.745.9042 | Visit our Showroom 600 Neal Dr. Peterborough | www.cabinetree.biz

CONTENTS

MID-SUMMER 2018



LOCAL FEATURES

- 16 Style Picks** Some quick summer pointers to home and garden improvements.
- 22 Home & Builder** A hard-working couple restores their historic farmhouse in Whitevale.
- 32 Spotlight** Shoreline Furniture Co. is a styling oasis in the heart of Kawartha.
- 36 Feature Home** A cottager, architect, designer and builder collaborate on a new lake house.
- 48 People** Home professionals can help you make the right choices.

DEPARTMENTS

- 10 Editor's Note**
- 14 Advice** Countertop Primer
- 18 Cooking At Home** Peachy Popsicles
- 20 Gardening** Fire In The Garden
- 30 Double Take** Homework Station
- 44 Design Ideas** Big Is Back
- 46 Projects** Faux Depression Glass
- 56 Decorating** Bathtubs
- 58 Cooking At Home** Gourmet Grilled Cheese
- 64 Focus** Pool Party
- 65 Home Resource Directory**
- 66 Finishing Touch** Bold Sofas



ON THE COVER

A 19th century farmhouse gets a lively new lease on life. Story, page 22. Photography by Harold Clark.



NORMERICA

TIMBER HOMES & COTTAGES

Visit normerica.com for a sample of our stunning custom home and cottage designs.



info@normerica.com 1.800.361.7449 normerica.com



COUNTERTOP PERPLEXITY

Interior Designer **Dolores Pian** shares her ideas.

Planning a new kitchen or bathroom? Confused by the many counter choices? Have you gone from enthused to confused? Let's see if we can clear up your countertop perplexity.

WHAT IS YOUR COUNTERTOP PERSONALITY?

What kind of surface fits your lifestyle? Is it easy to maintain? What is your budget? Digging deep into these questions will get you closer to the right solution for you.

POPULAR CHOICES

While there are a variety of materials, we'll review the most popular choices:

NATURAL STONE: Consisting of granite and marble. Stone is mined from the earth in the form of granite, which is granular in appearance, or marble, with its flamboyant veining. They are porous and must be sealed to prevent staining and moisture retention. The seal needs to be maintained on a regular basis.

MAN MADE: As seen in plastic laminate, quartz and large format ceramic tile.

Plastic laminate is perfect for the budget conscious. Known under brand names such as Arborite, Formica or Wilson Art, it is hard plastic sheeting glued to plywood. It comes in a variety of designs from plain to fanciful. Sinks and faucets

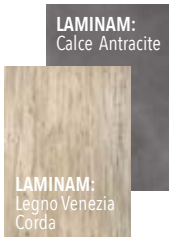


must over mount and have a water-tight seal, otherwise water will leak and will warp or rot the plywood. The edging and backsplash can be made in one piece. Countertops are available from most fabricators and large box hardware stores.

Quartz is a mix of natural quartz, resins and colouring agents. Common brands include Cambria, Corian Quartz, Ceasarstone and Silestone. They can imitate the pattern of stone or come in various colours to reflect your unique décor. It is non-porous, does not require a sealant and is low maintenance. Since it is a resin mix, you cannot put a hot pot directly on the counter. You must use a trivet.



Large format tiles are non-porous, ceramic-slab tiles. Brands such as Laminam by Stone Tile come in a standard size of 64-by-128 and a half-inch thick.



MATTE OR SHINY FINISH

Shiny surfaces can cause extreme glare and eye strain and because of that, matte surfaces are gaining in popularity. Historically, designers have been big fans of matte surfaces for a soft, sophisticated look that minimizes fingerprints and smudges.

COST

Costs for counters can vary wildly. With quartz in particular, cost is affected by the quality of the quartz stone being used, the method of manufacturing (some use fillers



such as sand), country of origin and photo reproduction quality of the pattern. Ask for a specification sheet outlining all the ingredients to know what you are buying.

Other expenses include installation fees, location of the project, thickness of material, edge details and the number of cut-outs required. Generally, 90 per cent of your cost is designated to labour and 10 per cent to raw material.

Large format tiles are comparable to quartz. Granite, marble and quartz are now similar in price.

FOOD SAFETY

When preparing food on counters, always use a separate cutting board and clean up with a mixture of vinegar and water to disinfect the counter.

NEW AND NOTABLE

DuPont's Corian is now offering a charging surface that can power up your devices wirelessly. A transmitter is embedded under the counter. Just plug a charging ring into your device, place it on the counter and recharge your battery.



Now that we've cleared up your countertop questions, have you gone from confused to enthused? **OH**



YOUR LOT, YOUR DREAM, CUSTOM BUILT.

IMAGINE THE POSSIBILITIES

With your ideas and our expertise, the **perfect** custom home is brought to life.

Let's get started.

CALL US
1.800.265.3083

EMAIL US
royal@royalhomes.com

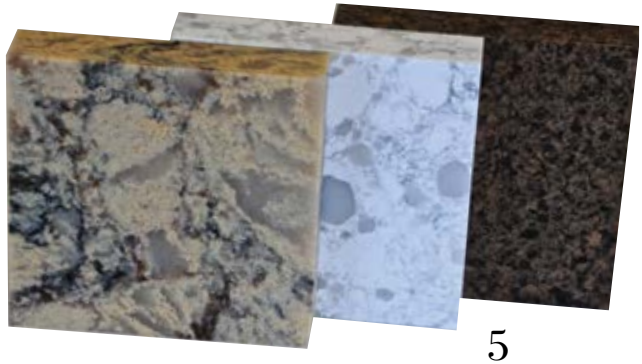
VISIT US
RoyalHomes.com



Warm Weather NOTIONS

Hunting ideas for home improvements
has never been easier or as much fun.

PHOTOGRAPHY **WALTER FRANCZYK**



1 THE AVANT-GARDEN SHOP

Yard Art
Populate your yard and garden with whimsical flora and fauna created by Dog Bite Steel. Jean Pierre Schoss recycles metal from oil tanks, farm implements and scrap piles to create his playful images from nature.
165 Sherbrooke St., Peterborough
705.743.0068 | avantgardenshop.com

2 MY FAVOURITE THINGS

Accessories
Home accents and décor abound for nearly every room of the house or cottage, in every season, at this popular shop in the heart of the Kawarthas. The store also carries dinnerware, artwork, bath soaps and accessories, as well as indoor and outdoor furnishings.
10 King St. E., Bobcaygeon
705.738.9090

3 LOG FURNITURE & MORE

Canoe Coffee Table
This pine coffee table is perfect for the cottage. The canoe opens on top to store puzzles, games and toys. There are many paint and stain options to match your living room.
1.800.557.0985 | logfurnitureandmore.ca

4 CUSTOM BUILT SOLUTIONS INC.

Cabinetry
These doors are just a small sampling of the styles available at this high-tech shop that builds affordable custom cabinetry for kitchens, islands, bars, bathrooms, laundry rooms, closets and built-in shelving. These manufacturers use all species of wood to create traditional or contemporary cabinetry.
494 The Parkway, Unit 7, Peterborough
705.750.1555 | custombuiltsolutions.net

5 HARWOOD KITCHENS

Counters
Rock-solid counters, stone-topped islands and open-concept kitchens are a popular trend in home renovations. Harwood Kitchens has literally hundreds of options from which to choose. The store offers award-winning design and customer service.
27 Lansdowne St., Peterborough
705.742.6241 | harwoodkitchens.com

6 SINE'S FLOORING

Floor Coverings
Choose from Beaulieu vinyl, porcelain tile, Shaw carpet or laminate for your next flooring project. With two locations, Sine's Flooring also offers hardwood flooring, natural stone flooring and window coverings. The shop installs everything it sells and guarantees workmanship.
884 Division St., Cobourg | 905.372.9117
23 George St., Brighton | 613.475.2764
sinesflooring.ca **OH**

PEACH & COCONUT *caramel* POPSICLES

RECIPE AND PHOTOGRAPHY
JENELLE MCCULLOCH



online Get more recipes at
ourhomes.ca/mag/cook

This yummy frozen treat is full of sweet, fresh peaches and coconut. These home-made popsicles make a healthy and wholesome dessert.

PEACH MIXTURE

- 2 large or 3 medium peaches
- 1 Tbsp honey
- 1 tsp cinnamon

Dice peaches and add to saucepan with honey and cinnamon. Heat until soft, then set aside to cool.

COCONUT CARAMEL

- 1 can (14 oz) full fat coconut milk
- ½ cup coconut sugar
- ¼ cup honey
- 1 Tbsp coconut oil
- 1 tsp vanilla extract
- Sea salt

Combine coconut milk, coconut sugar and honey in a saucepan and heat over medium. Cook for 10-15 minutes or until thickened. Remove from heat and add coconut oil, vanilla and a pinch of sea salt. Set aside to cool.

COCONUT MILK MIXTURE

- 1 can (14 oz) coconut milk
- 1 Tbsp honey

Mix together coconut milk and 1 tablespoon of honey, set aside.

TO ASSEMBLE

Using popsicle moulds, spoon in peach mixture then coconut caramel until each mould is half full. Top up each mould with coconut milk mixture. Place popsicle sticks in the middle of each mould. Release any air bubbles in the moulds by gently moving the popsicle sticks. Freeze until firm. **OH**



We design and build
log & timber frame homes.

Always custom. Amazing support. The Total Package.

confederationloghomes.com



We know that shopping for a log or timber frame home can be a daunting task. After all, this is your dream home we're talking about. You can't trust just anyone with something this big.

Go to our website and learn about:

- Our nearly 40 years in business
- 3D virtual walkthroughs
- Browse over 100+ different floor plans
- Photo gallery of finished homes
- How to get started
- Attend a seminar *and much more!*



1-877-Go-2-Logs (1-877-462-5647)

gardening

ring of FIRE



PHOTOS: REGENCY FIREPLACE PRODUCTS

Extend your living space to the outdoors. A fire table creates warmth and ambience outside.



STORY **MELANIE REKOLA**

FIRE IS FASCINATING. Our human ancestors used fire to stay warm, cook food and keep predators at bay. It is also believed that human socialization began while huddled around the hearth. Adding cosy warmth and ambience to modern-day al fresco areas, the outdoor fireplace often serves as a design anchor at the centre of an outdoor living space. The fire also offers a place where people can relax and unwind together even when there's a chill in the air.

Here's a primer on how to bring fire and style to your outdoor space.

SELECT A STYLE

Freestanding Fireplaces: Adding a more formal or modern touch, these large, built-in fireplaces are simply gorgeous. They also offer opportunity for trendy, integral wood storage boxes, hearths, mantels and sometimes even a spot for an outdoor television. Some prefabricated models are offered but most often these are custom built and faced using a wide range of natural and/or manmade materials, including brick veneer and natural stone. Typical chimney and venting requirements for wood-burning units are dictated by strict local building regulation, making natural gas the fuel of choice due to less stringent zoning requirements. As with most things custom-made, freestanding fireplaces often come with a hefty price tag.

Fire Pits: The original open fire feature, these range wildly in design and price tag. They can be pre-fab or custom, simple or extravagant. At their most basic, a humble campfire dug into the ground and lined with stone boulders might work for some, while others may choose a high-end, custom fire feature that doubles as a dining table.

Fire Tables: Perfect for tight spaces and easy on the bank account, fire tables are all the rage. Often fueled by propane and available in an assortment of styles, they are brilliant in the sense that they are also moveable, meaning you can also take them with you when you move.

PICK A FUEL

Wood: Wood burning fireplaces look and smell like a real campfire. To some, the odour part can be looked at as either a pro or a con! They give off lots of toe-warming heat and their fire light is nice and bright. On the negative side it takes time to build and prepare a roaring fire. They can be messy and sometimes require extra cleaning and maintenance. Wood burning fire features are also dictated by stringent local guidelines and some residential areas don't allow them at all. Yearly permits may also apply.

Natural Gas: Natural gas is a quick way to enjoy a fireside evening. They are user-friendly, easy to maintain and offer a good heat source so long as they are rated at the proper output. Unfortunately they can be expensive to run and often the fire light is barely detectible until the sun is completely out of sight.

Propane: Also quick and efficient, propane fire features are great for those impromptu mid-week date nights or quick drinks with friends. Yes, this fuel source is costly but

on the flip side the firelight is quite obvious even during daytime hours. Though they do give off some heat, they are more for ambience rather than actual heating. They also can be a bit smelly.

Gel Fuel: Clean burning with no smoke and very little odour, these also require no ventilation and can be placed anywhere. Though they offer real flames, there is not much associated heat.

PLAYING WITH FIRE

Fire – though very beautiful – can be very dangerous and precautionary measures must be addressed. Never place a fire feature too close to a wall or other combustible surfaces or on a raw wooden deck. Fireproof surfaces are best for placement and include stone, concrete or tile. Be vigilant to situate them away from overhead tree branches as over time this will damage the tree and could also start a fire.

Interestingly, science suggests that the mesmerizing flicker of the television is very similar to the flicker of firelight and is likely one of the reasons why TV is so addictive. Knowing this, perhaps you'll choose to sit outside and enjoy some thought-provoking conversations alongside the fire more often. **OH**

Fire tables are brilliant – they can be used where space is limited, and you can take them with you if you move.



PHOTO: DEKKO

LOCKSIDE TRADING COMPANY



FURNITURE • HOME DECOR • LIGHTING • CLOTHING



3 Time National Award
Winning Retailer!



Complimentary Interior Design
When Purchasing Furniture



It's more than just shopping...
It's a destination!

WINDOW TREATMENTS • INTERIOR DESIGN Residential & Commercial

Haliburton
183 Highland St.
haliburton@lockside.com
1-705-457-5280

Young's Point
2805 River Ave.
shop@lockside.com
1-888-714-0484



www.lockside.com



HISTORY PRESERVED

STORY **JO ANNE MULVANEY** | PHOTOGRAPHY **HAROLD CLARK**



LEFT: The sunroom in this restored heritage home has expansive views of the surrounding countryside. **BELOW:** Builders Kate Campbell and Dave Coleman on their front stoop.



“This house has good, sound bones,” says **Kate Campbell**, of **KateBuilds**, builder, contractor and self-proclaimed designer who, along with her husband, **Dave Coleman**, restored The Major House – a 160-year-old farmhouse in Whitevale.

Kate and Dave bought the Victorian Gothic heritage home over three years ago. “This is not just any heritage home,” explains Kate. “It happens to be The Henry Major House, one of the oldest homes in Pickering, circa 1850.” Heritage homes provide heart, character and good, sound bones. Yet owning and renovating a heritage home comes with its share of caveats and challenges, as both Kate and Dave soon discovered after they purchased their house, the biggest project of Kate’s career. *Continued on page 24*



Multiple decks provide a variety of sun-drenched spots for quiet relaxation, meals or entertaining. **BELOW:** David Coleman's office displays an old photo showing a previous incarnation of the Victorian Gothic farmhouse.

The couple came across the property while searching for a home. The Major House had been sitting on the market for quite some time, so when the price was lowered significantly, Kate and Dave made a same-day offer. The neglected old farmhouse soon became theirs.

The dilapidated home had gone through its share of growing pains from being abandoned and boarded-up for a number of years. It survived extensive renovations, losing most of its original interior features. Main beams were cut and it was sinking in the middle. The exterior of the home was in disrepair, but it was nestled on two-and-a-half acres, in a beautiful, tree-lined hamlet on the banks of West Duffins Creek, which runs through the heart of Whitevale.

The Major House, named after a prominent farmer, merchant and son of one of the area's earliest settlers, is surrounded by golden fields of cattle corn, which suits Kate, a true country girl, just fine.

The couple invested "heart and soul" into restoring the 3,500 sq. ft. home, offering large stately, principle rooms on the main floor, with bedrooms on the second. The structural exterior of the house remained intact. The couple were adamant about preserving its original, charming board and batten siding.



They painted it a rich blue, Trinidad & Tobago by Para Paints – with white trim.

They worked closely with the town of Pickering's heritage committee. "A renovation, particularly with a heritage home, can cost up to 50 per cent more," Kate explains. "It was very important to both Dave and I that we share the appreciation for features that heritage homes offer. If you budget properly, you can have enough money to do things the right way."

They put together a plan and began gutting

and renovating the interior of their home while living there, essentially building a new house from the inside out. The interior needed a great deal of work. The walls were caving in, mice had invaded, doors wouldn't close, the roof was leaking, all utilities needed to be restructured, interior beams and floors were sloping. "We felt seasick while crossing the halls," says Kate. And to top it off, they quickly discovered there was little insulation. Consequently, during the colder months, they had to cover the windows with plastic wrap.

Continued on page 26



Salvaged ceiling tiles add a little nostalgia to the modern look of the home's new kitchen. **ABOVE:** Repurposed boards from the original structure were made into a rustic dinner table. Artwork by Heather Sinnott.





The couple took apart three second-floor rooms to create this large master bedroom with its vaulted ceiling and soaring beams. **BOTTOM:** In the en suite, white fixtures and furnishings complement the bedroom.

They removed all the lath and plaster and brought the house to the original two-by-four studs. With nine-foot ceilings on the main floor, they decided to reframe the lower ceiling on the second floor – basically creating a new, grander house. The second floor was poorly designed with inadequate use of space, so walls were removed and each room was redesigned.

A new upstairs bathroom with a slipper tub, a central glassed shower, heated towel rack and white vanities made from repurposed dressers, was their first project. With a vaulted ceiling of whitewashed salvaged planks and sleek marble flooring, the bathroom set the tone for the rest of the renovation.

Southbrook Cabinetry furnished the gleaming white cupboards in the new kitchen where the island and countertops are covered in Dekton, a resilient worktop from Cosentino Canada. Above the island, reclaimed wall studs frame antique metal ceiling tiles. Black hanging lanterns from Progress Lighting illuminate the space. Double doors open to a side porch where a smoker augments the induction cooktop, double ovens and warming drawer inside.

Next to the kitchen is a sunroom with large windows overlooking the yard and surrounding farm fields. White sectional sofas and rustic tables of metal and distressed wood furnish this bright, airy space. Remote-controlled blinds from Hunter Douglas regulate the natural light.

Continued on page 28



Greenville Soapstone Company



1-888-95-STONE

sales@greenvillesoapstone.com

www.greenvillesoapstone.com

BURLINGTON
4450 Corporate Dr. Unit 2

PORT HOPE
375 Ward St. Unit 4

Providing excellent service and Benjamin Moore Quality paint for 35 years.

Charlotte Paint

YOUR GO TO STORE

Benjamin Moore
Paints

Charlotte Paint & Wallpaper
451 George Street North, Peterborough
705.743.5742

Harwood Kitchens

Providing Turn Key Kitchen Renovations in Peterborough for Over 30 Years!

We are proudly selling Canadian Made Cabinets

27 Lansdowne St. West,
Peterborough
harwoodkitchens.com
705-742-6241

miralis
CAMBRIA

As seen on HGTV

PKHBA
Housing Design Awards 2016

f Like Us On Facebook



ABOVE: Building the main bathroom on the second floor required careful engineering and set the tone for the rest of the renovation. **RIGHT:** Original dormers lend intimacy to this upstairs bedroom.

When it came time to tackle the basement, they discovered the original logs, which supported the entire structure. Kate explains that the tops of the logs had been hand-hewn to flatten them. They also had to be supported with a new foundation beneath the original fieldstone.

The couple ripped out all the old windows and installed Pella Architect Series wood windows, in keeping with the architectural integrity of the house. Kate and Dave replaced the asphalt roof and invested in Matterhorn Metal Roofing cedar replica shingles. “I believe that we are currently one of the only houses in Canada to have these shingles,” says Kate. “The colour of the roof is just like cedar – it’s stunning.”

Once the interior was complete, their attention turned to the backyard, which needed a lot of work as the garden was overgrown. They installed low maintenance materials and architectural details for the 1,500 sq. ft. deck, incorporating Trex, a high-performance, composite, wood-alternative, with a natural grain appearance. They also built a Trex pergola with bright yellow Sunbrella shades and installed Dekton countertops. They built a fire pit, surrounded by stone.

Kate, who has worked with Mike Holmes of *Holmes on Holmes* and many other trades professionals, entered the skilled trades in 2005. It was when she first picked up a power tool that she realized she had discovered her passion for building, which incorporates carpentry, electrical, plumbing, finish carpentry, design and several other trades.

When asked what she has in store for her next project, she replies: “I’ll continue to express my passion for building and creating with my husband, Dave. But, for now, we’re going to thoroughly enjoy our dream home here in Whitevale.” **OH**



SOURCE GUIDE

- Al Anderson • Best Broadcast • CDN Plumbing
- Central Fairbank Lumber • Century Home & Garden Greenhouses • Cosentino Canada • KateBuilds • Kate’s Contracting • NCubed Designs • Jo Alcorn – Whitewash & Co • Scenic View Landscaping • Schell Lumber Home Building Centre • Southbrook Cabinetry • The Spray Foam Guy • Tradescope Electrical • Twelve Oaks Flooring

Custom Built Solutions Inc.

10th Anniversary Special
Wholesale price on Granite & Quartz Countertop with Kitchen
 We will meet or beat any *detailed* competitor **quote by 10%!**

Made in Peterborough
 Free Design
 Consultation and Estimate

705.750.1555
 info@custombuiltsolutions.net
 494 The Parkway,
 Peterborough ON

CustomBuiltSolutions.net

Over 80 Years in the Well Drilling Business

G. HART & SONS
 Well Drilling Ltd.

With a long history & heritage in the well industry, you can trust G.Hart & Sons.

We specialize in well drilling, well cleaning, pump service & installation, but we also handle inspections, upgrades & pump repairs.

142 Kawartha Lakes County Rd. 8, Fenelon Falls
 1-888-887-3331 • 705-887-3331 • www.ghart.ca

www.shorelinefurnitureco.ca 705-656-3600

SHORELINE FURNITURE CO.

Furniture
 Home Décor
 Home Decorating &
 Design Services

Located beside Tucker’s Marine
 9988 Hwy 28 Apsley On.

STEEL TILE CO.
 METAL ROOFING MANUFACTURERS

1.800.461.5567
 tileinfo@steeltile.com

MAKING A STATEMENT WITHOUT SAYING A WORD!

Family Run Company For Over 30 Years!

SAME NAME • SAME LOCATION
 Come Explore the Benefits & Discover the Lifelong Durability of a Steel Tile Metal Roofing System!
A LIFETIME OF PROTECTION FOR YOUR BIGGEST INVESTMENT

3487 Thomas St., Innisfil
 Showroom Open to the Public: Monday - Friday: 8am - 5pm
 www.steeltile.com

double take



HIT THE BOOKS IN *style*

Recreate this look in your own home.

1. **ARTERIORS:** Zanadoo Fixed Chandelier in Antique Brass 2. **SURYA:** Eternal Wall Art 3. **SURYA:** Fargo Pouf in Taupe & DeSoto Pouf in Tan 4. **STRUCTUBE:** Emerson Desk 5. **INDIGO:** B. Fruit Abacus 6. **FUSION MINERAL PAINT:** Metallics Pale Gold 7. **MUUTO:** Visu Chair Wood Base in Rose **OH**



* For a little added glam, paint the legs of this desk gold!

50 LINWOOD CUSTOM HOMES



Custom Home Building Made Easy for 50 years.

- Design to Budget •
- Premium Material Package •
- Construction Services •

The Complete Building Solution™

linwoodhomes.com • 1-888-546-9663



THE PRODUCTS: Canadian-made furniture and accessories for the living room, kitchen and bedroom. “I also try to sell local artists’ work – paintings, metal work, jewelry and lots of home décor from various companies out of Toronto and out west,” Jessica says. “In the summer time, I carry a lot of outdoor furniture.” Quilts and Emile Henry ceramic cookware are also available.

THE STYLE: “It’s cottage country, so I try to keep it lake house, rustic cottage, but still have the ability to bring in contemporary furniture, if somebody wants it,” says Jessica.

WHAT’S HOT: Outdoor entertaining. Melamine dishes, bamboo dishes, acrylic glasses and stainless-steel glasses. Accent pillows, blankets, throws and hostess gifts like beer caddies and serving boards with spreaders are quite popular.

FAVOURITES: “Emile Henry is my favourite,” says Jessica. “That’s why I brought it in. I love cooking with it, baking with it. I also have an addiction to accent pillows. They sell like crazy.”

GET THERE: 9988 Hwy. 28, Apsley
705.656.3600 | shorelinefurnitureco.ca **OH**



Styling OASIS

STORY AND PHOTOGRAPHY
WALTER FRANCZYK

THE PLACE: Midway between Lakefield and Bancroft, a former gas station, cafe and garden shop has been transformed into the charming home of **Shoreline Furniture Co.** Opened three years ago, Shoreline offers various styles of furniture, accessories and décor, from lake house, cottage and rustic to contemporary. “We try to have a little bit for everyone,” says owner Jessica Tucker. She studied visual merchandising at Sheridan College and worked for a Peterborough furniture store for 10 years before opening her own shop. “The reason I opened this store close to home is we had a daughter three years ago. When I went back to work in Peterborough, I was spending more time on the road than I was seeing her. I thought something closer to home would be ideal.”



Jessica Tucker



» Marketplace

To order a listing in Marketplace, please contact:
 Lisa Leonard | 705.750.7736 | lisa.leonard@ourhomes.ca
 Lisa Merrell | 705.445.5065 x202 or 1.877.600.4840 x1 | lisa.merrell@ourhomes.ca



EXIT
 EXIT REALTY LIFTLOCK
 Brokerage
 Independently Owned & Operated

Stephen Coughlin Sales Representative
 Bus: 705.749.3948
 Dir: 705.927.2205
 Text: steve2exit at 85377 for mobile business card
 scoughlin@exitrealtyliftlock.com
 www.stephencoughlin.com

M&J PLUMBING

NO JOB TOO SMALL - WE DO IT ALL
 Your Full Service Local Plumber

Cobourgplumbers.ca 905-375-9378
705-875-4292
 peterboroughplumbers.ca

» Marketplace

To order a listing in Marketplace, please contact:
 Lisa Leonard | 705.750.7736 | lisa.leonard@ourhomes.ca
 Lisa Merrell | 705.445.5065 x202 or 1.877.600.4840 x1 | lisa.merrell@ourhomes.ca

You'll Love Our Garage Doors
 Inside and Out

The Genuine. The Original.

OVERHEAD DOOR
 Overhead Door Company of Peterborough
 705-748-2690
 www.overheaddoorptbo.ca

TRUST A LOCAL AGENT
 "selling lifestyles through real estate"

RE/MAX
 All-Stars Realty Inc., Brokerage

CATHY POOLE
 Sales Representative

Text: 705-738-7007
 office: 705-738-2378
 73 Bolton Street, Bobcaygeon ON. K0M1A0

Area Resident for Over 30 Years

NORTH KAWARTHA DISPOSAL

Garbage Bin Drop Off
 And Take Away
 Septic And Holding
 Tank Pumping

705.768.4783

TRENT SECURITY SYSTEMS LTD

705.748.2001 • 480 The Parkway, Peterborough
 rick@trentsecurity.com • trentsecurity.com

Burglar Alarms
 Fire Alarms • Closed Circuit TV
 Card Access Systems
 Distress Alarms • ULC Alarm Monitoring

Howie's BLINDS
 "Let Howie Bring The Showroom To You"

WANT TO COOL DOWN YOUR SUMMER?
 Call me, I might have a Cool Blind for you!!!

GREAT PRODUCTS
 FREE Estimates & FREE Installation
 Guaranteed BEST PRICING in the Kawatha's

Call for a QUOTE today • 705.750.0656

Your Own
 Design

705.927.2172

HOUSE PLANS • SITE PLANS • HVAC PLANS • CONSULTATION
 15 Trillium Court, City of Kawartha Lakes • www.yourowndesign.ca

Logan Tree Experts

Insured. Certified. Professional.
705.657.6916 | logantreeexperts.com
 TREE REMOVAL, PRUNING & PLANTING • ARBORIST REPORTS

In the business for a 2nd generation!

Don LaForte EXCAVATING
705.927.0913

Roads • Basements • Fence Bottom Removal • Fine Grading • Drag Line
 Pull Scrapers • Concrete Breaking & Removal • Heavy Duty Brush Cutting
 Field Tile Draining • Ponds • Trucking • Lot Clearing & Filling • Snow Removal
 Top Soil Screened & Delivered • Float Services
 Heavy & Light Equipment • Industrial & Commercial
 Located Minutes South of Peterborough

GRAY LANDSCAPE .COM

705-656-9447
 o/o Paul Gray
 graylandscape@nexicom.net

Bert's appliances

Your Appliance & Mattress Centre
 SALES & SERVICE

54 Colborne Street, Fenelon Falls
705.887.5436

Kawartha Docks
 Designs for Waterfront Living

ALUMINUM FRAME POLE & FLOATING DOCKS
 MARINE RAIL - TOWER DOCKS - STATIONARY LIFTS
 CUSTOM DESIGNS - SHORELINE WORK

Jeff Ball
(705) 931-1497
 Box 368, Apsley ON K0L 1A0
 jeff@kawarthadocks.com www.kawarthadocks.com

YOUR SOURCE FOR FULL SERVICE

Currie Tire Ltd.
 GOODYEAR

705.745.4675
 6 Lansdowne St. W.,
 Peterborough

Check out our website for a full
 list of Tire & Auto Services
 currietireltd.com

TIRE
 INSTALLATION
 WHEEL ALIGNMENTS
 BALANCING
 ROTATION
 TPMS SERVICE
 and more!

AUTO
 BATTERY REPLACEMENT
 OIL CHANGE
 BRAKE SERVICE
 ENGINE REPAIR
 TUNE-UP
 and more!

It's Service that sells homes.

Jo Pillon - Sales Representative
 Your Real Estate
 Service Professional

ROYAL LEPAGE 100 YEARS SINCE 1913

Royal LePage Frank Real Estate Brokerage Peterborough
 ph: 705.748.4056 • cell/direct: 705.875.4958
 jopillon@royallepage.ca • lookingforahome.ca

Signarama
 Peterborough
 The way to grow your business.

Custom printed or CNC routed
 creations for your home or cottage.

CANVAS PRINTS | ACRYLIC SHAPES
 FAMILY PORTRAITS | CUSTOM ACCENTS

705-742-9994 | 1-866-406-1044
 SignaramaPeterborough.com

DIGITAL SIGNS | INDOOR & OUTDOOR SIGNS | BANNERS & LARGE FORMAT | VEHICLE WRAPS

JACK LAKE *Original*

STORY **WALTER FRANCZYK**
PHOTOGRAPHY **HAROLD CLARK**

A 1905 canoe hangs above the games room of this Jack Lake cottage. Walls are finished with cedar shingles for an outdoor ambience. **RIGHT:** The new cottage blends in with its natural surroundings.



When Eric Whitmore, a woodsman, trapper and jack-of-many-trades, built a cottage for himself on Jack Lake, he knew the best spot for it. Revered for his workmanship, Eric built and sold dozens of cottages around the lake at a time when there were no lakeside roads. He steered a wooden motorboat to haul building materials to his construction sites. Many of the cottages he built still stand today.

A Toronto couple recognized Eric's excellent choice of location. On a wooded point with a beautiful shoreline, southwestern exposure and water on three sides, Eric's knotty pine cottage charmed them. They promptly bought it 23 years ago on the first weekend they began looking for a lakeside retreat. "We were very happy here," says the owner. "But it was too small for our needs." Rather than renovating, they decided to tear down the old cottage and start again.

After seeing a magazine story about the sensitive restoration of an old Georgian Bay cottage by architect **Harry Morison Lay**, the owners enlisted Harry's help in designing a new lake house. "We wanted it to fit into the landscape," says the owner. They wanted a cottage that would appeal over time. Size was important, large enough to accommodate more people but not so big that cleaning and maintenance became issues. Rather than an open concept, they favoured separate spaces for the kitchen, dining and living rooms. "I wanted it to look rustic," says the owner. "We wanted a big stone fireplace and we wanted knotty pine walls and floors. That was important to us."

Continued on page 38



The couple had a builder in mind, their original handyman **Gord Tucker**, of **Gord Tucker Cottage Services Inc.**, who had graduated to building cottages. He served as general contractor for the project. “Gord did a magnificent job,” says the owner, who recognized that a strategic alliance between a builder and architect would produce the best results.

“The owners really wanted the replacement cottage to have the same aspects of inner tranquility and outlook as the original building,” says Harry. “What they loved most about the cottage was how the forest embraced it. It’s on a point, but completely shielded by a veil of mature birches and pines.”

Using the original 900 sq. ft. footprint of the old cottage, the new home was extended back from the shoreline and a second floor was added, with four bedrooms and three baths. “From the lake, you would never expect that the building has changed at all,” says Harry. Builders tore down the old cottage on Labour Day and the owners moved into their new digs the following August.

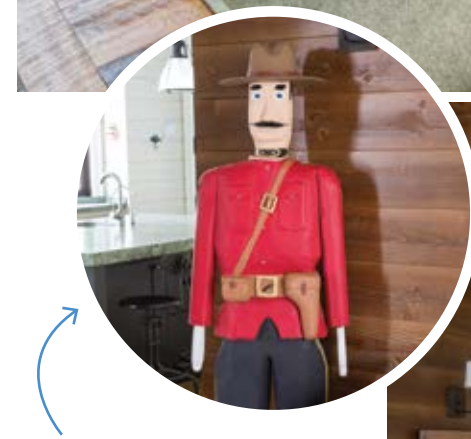
The cottage was a collaboration between the owners, architect, builder and designer Christine Hains, of Environment By Design, who brought considerable elegance to the work, says Harry. “I would happily concede that much of the enjoyment of the interior spaces comes from her steady hand,” he says.

Local materials, furnishings and skills were insisted upon by the owners. Stone from three different quarries forms the main floor fireplaces, floors in the foyer and Kawartha room, as well as exterior walkways and stairs. A cedar tree felled to make way for construction was hewn into fireplace mantels. Large red and white pines from the property were milled on site and installed as beams in several parts of the cottage.

Continued on page 40



Peter Goodwin used elm to craft the cottage's new dinner table. **ABOVE:** The kitchen's food preparation surfaces are green granite. Custom-built cabinetry was painted on site.

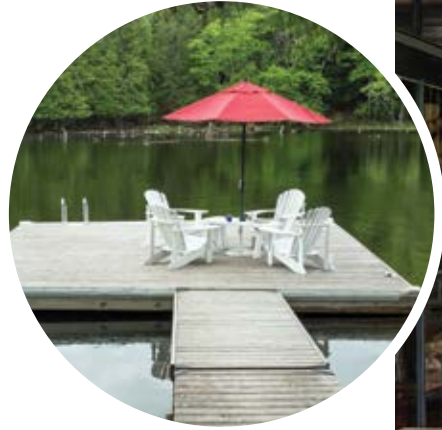


A wooden carving of a Mountie from British Columbia silently greets guests at the front door.

TOP: The living room at the front of the lake house occupies the footprint of the original cottage. **RIGHT:** Masons Glen and Rob Payne built the stone fireplace in the living room.



feature



ABOVE: A private inlet provides boat access and moorage. **RIGHT:** A wood-burning fireplace warms the three-season Kawartha room. **BOTTOM LEFT:** Roman blinds shade the master bedroom. **BOTTOM RIGHT:** Fossilized granite tops the vanity in the en suite. Barn board covers the upper walls.



Peter Goodwin of **Goodwin Creations** built a dinner table of local elm, a drop-leaf walnut table for the cottage entrance and the fireplace mantels. **Derek Julian** of **Wood By Design** crafted bathroom vanities, built-in cabinetry and the hemlock mantel face and shelves flanking the propane fireplace in a large upstairs bedroom.

Christine found an Ontario manufacturer of nickel gap panelling, a horizontal wall panelling, which joins, not in a v-joint, but in a square joint about the width of a nickel. "It's a continuous shadow band between boards," Harry says. "It gives the boards a lot of definition, a very crisp look." **Horizon Coatings** worked with the designers over a period of months to create the customized, six-inch pine panels, in a warm, honey-

coloured stain that clad walls in the living room and main front hall. In the dining room and bedrooms, a pale painted finish coats the nickel gap walls. Coffered pine ceilings and panelling amplify height in the living and dining rooms.

An accomplished and ambitious cook, the owner designed a kitchen large enough to create wonderful meals for a large number of guests. The main criteria was the cooking space had to look out on the water and have a visual relationship with the dining room. Builders accomplished that with a large bay window and expansive view above the counter on one side of the kitchen. A pass-through connects the kitchen with the dining room. Olympic Kitchens furnished the custom cabinetry, painted on site.

The kitchen's rear wall consists of wall ovens, built-in refrigerator and a pantry. Green, leathered granite tops the large central island and counters on three sides of the kitchen.

Engineered, wide-plank flooring, made of salvaged hemlock, runs throughout the main living spaces and bedrooms. In the three-season Kawartha room, pitted, honey-coloured limestone from **Stonescape Quarry & Fabrication** covers the floor. It matches stone in the outdoor fireplace, one of two fireplaces built by father and son masons **Glen** and **Rob Payne**. "The Paynes were terrific and they worked in the dead of winter. In minus 20 degrees, they put tarps up, heated the place and built these fireplaces," says the owner. *Continued on page 42*



Goodwin Creations
Fine furniture
designer and builder
since 1979.

Shown: Retro style
Bluetooth sound system
White Oak with black
metal base.

Call 705-745-9277
www.goodwincreations.ca
www.goodwinspeakers.com

Residential & Commercial Contracting



LARGE SELECTION
• Lights • Lamps • Shades • Ceiling Fans •

VanVark
ELECTRIC
SINCE 1968

www.vanvarkelectric.com

613-392-5867 | 16477 Hwy 2 (Between Trenton & Brighton)

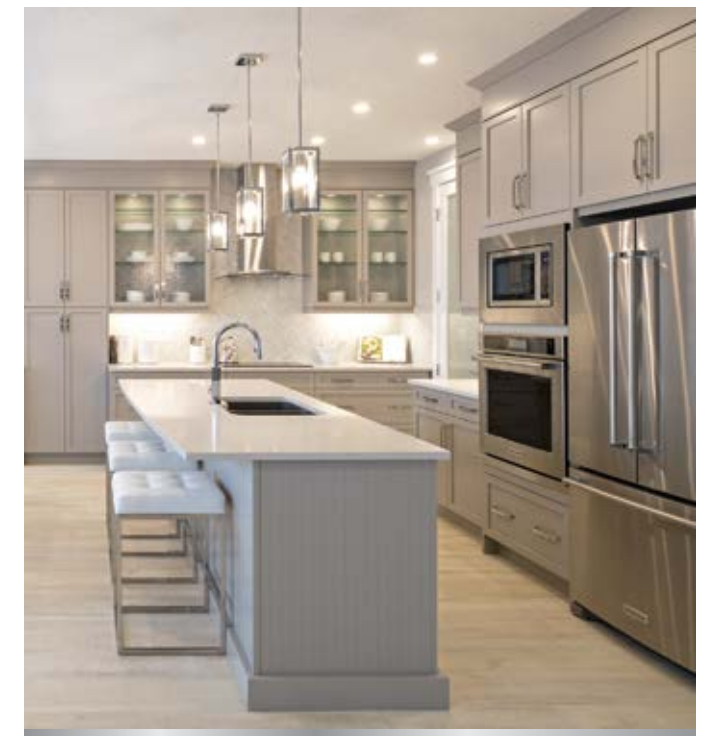
COMPLETE PLUMBING SERVICES

• Repairs • New Installations • Renovations

jshee.cp@gmail.com

(705) 656-4611

Chandos
PLUMBING
INC.



AYA KITCHEN DESIGNS

550 Lansdowne St. West
Peterborough, ON
T: 705.749.0045
www.AyApeterborough.com



GSD Get Staging & Design

If you want to make
Your home easy to sell
Make it easy to buy
STAGE IT!



Corinne Jenden-Selway

getstaging.ca | corinne@getstaging.ca | 705 879 9119

@GetStaging

@getstaginganddesign



Above the Kawartha room, at treetop level, is a games room, finished with cedar shingles to give it the outdoor look of a country porch. A cedar strip canoe from Stoney Lake, built in 1905, hangs just below the ceiling. "It's too beautiful to paddle, so we put it up on the wall," says the owner. Down the hall, the owners have hung a collection of paddles made by Walter Walker, a storied boat-builder and renowned canoe maker. Harry convinced the owners to put a steel roof on the cottage. Vicwest Building Products installed metal roofing to match the exterior siding. "It will never require maintenance and looks good," says the owner.

Trent Security Systems furnished security alarms and monitoring equipment while **Chandos Plumbing** installed the waterworks for the three bathrooms and kitchen.

The owners enjoy the lake with their collection of wooden motorboats and several canoes.

Entertaining is what they enjoy most about their country home. "We both have lots of friends and relatives and the place is full every weekend and during the week all summer long," the owner says. To accommodate guests, they have a bunkie and an opulently furnished, Quebec prospector's tent. They also bought the property next door, a cottage previously owned by sports columnist and novelist Scott Young, who wrote some of his work there. **Gray Landscape Construction** groomed terrain around the new cottage with stone walkways, stairs and steps to the lake.

Evenings, around sunset, are the owner's favourite time of day. "You sit out there and watch the sun go down over the islands. It's fantastic," he smiles. **OH**

SOURCE GUIDE

• Amberwood Doors Inc. • Chandos Plumbing Inc. • Environment By Design • Goodwin Creations • Gord Tucker Cottage Services Inc. • Glen & Rob Payne • Gray Landscape Construction • Harry Morison Lay, Architect • Horizon Coatings • Jeff Parnell Contracting Ltd. • Kawartha Stair & Rail Ltd. • Mad-Cat Electric Co. • Northern Wide Plank Flooring • Olympic Kitchens • Stonescape Quarry and Fabrication • Studio Lamp Cage • Switzer Sales & Service • Trent Security Systems • Windows First • Wood By Design • Vicwest Building Products



TOP: Like a second master bedroom, this upstairs bedroom has a commanding view of the lake. **ABOVE:** A window bed makes an inviting sleeping spot for youngsters.



Now Offering Bath Accessories
VISIT OUR BATH BOUTIQUE!

MY FAVOURITE THINGS

Your Prime Source for Home & Giftware, Art & Wall Décor



OPEN EVERY DAY
10 KING ST. E. BOBCAYGEON

705.738.9090
info@myfav-things.ca



STORE HOURS: Mon to Sat 10am to 5pm, Sundays 10am to 4pm.

CUSTOM CABINETRY



WOOD
BY
DESIGN

5 Indacom Drive
Douro-Dummer
(705) 761-7770
woodbydesign.ca

@WoodByDesignCabinetry



RESIDENTIAL | COTTAGE | COMMERCIAL
Interior Design & Decorating

On-site expert advice and building centre • In-home consultations



2968 Lakefield Road, Selwyn
705.748.3875 info@lakeshorehd.ca

1976-2018 Celebrating 40+ years
Quality Annuals and Perennials
Award Winning Display Garden
Unique Container Gardens
Friendly and Helpful Staff

GRIFFIN'S
Greenhouses

3026 Lakefield Road
5 km north of Trent University

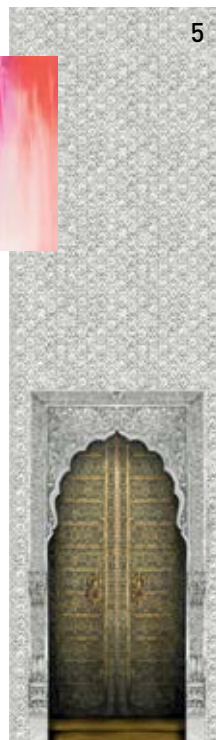
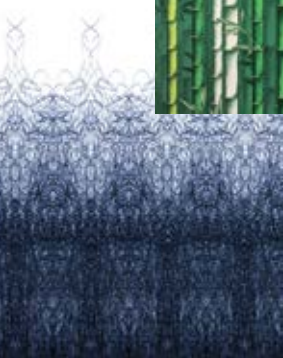
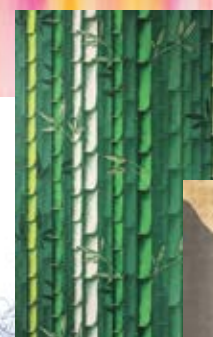
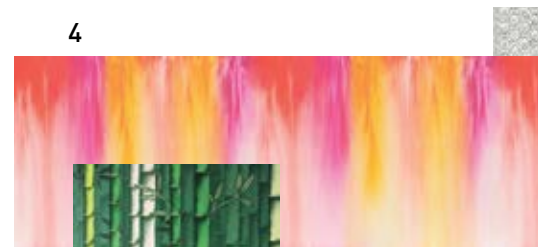
705.652.8638 877.647.4334
www.griffinsgreenhouses.com

10 WAYS TO GO BIG



STORY **YANIC SIMARD**

In interior design, choosing the right scale is always important – and sometimes bigger really is better! Here are my top 10 ways in the home to consider going BIG with your décor choices to create a strong statement and a generous sense of luxury.



Light Fixtures

Oversize lights add big drama and character to elevate the look of an entire space. This is especially true when you mix the scale of a grand chandelier with a modern shape to create an unexpected effect.

1 For a sense of balance, try a large pendant fixture with an airy form that includes a lot of clear glass or negative space, like an angular fixture. The silhouette is can't-miss-it big, but the look isn't overwhelming.

2 Floor lamps with a 24-inch shade or larger match the scale of a large piece of furniture like a bed or sofa, giving the whole grouping a sense of weight. Using simple drum or cone shades in a solid neutral colour makes sure the look is strong but not too heavy.

1. ZANEEN: 39-inch Willy 100 Suspension Light in Black **2. TROY LIGHTING:** Uni in Tide Pool Bronze **3. MOOOI:** Random Light in White

Patterns & Papers

In the digital era the options for patterns and even custom prints are virtually endless. Rather than playing it safe, consider using a paper or wallcovering with a large-scale pattern, one that you can see without having to stare at a wall up close.

3 Love a wallpaper with a large print but don't want to overwhelm the room? Such a wall covering is perfect for a single accent wall, paired with neutral paint for the remaining, creating a dramatic focal point in a balanced way.

4 When choosing a large-scale print for wall coverings, look for ones with light backgrounds that can be matched to a nearby wall colour. This helps create a seamless effect and a sense of depth, which avoids visually shrinking the room.

4. ROLLOUT: Colourinky Wallpaper **5. COLE & SON:** Bahia Wallpaper **6. OSBORNE & LITTLE:** Bamboo W7025-01 Wallpaper **7. ROLLOUT:** Ballpoint Pen Wallpaper **8. CALICO WALLPAPER:** Satori Mountain Wallpaper

Seating

Seating is definitely an area where quality should not be ignored for the sake of quantity. It is often better to have fewer bar stools or dining chairs in a generous size that people will truly want to use.

5 Regardless of the size of the seat you choose, a person needs 24 to 30 inches of width to dine comfortably. Choosing wide seats (24 inches or more) ensures each guest has enough space reserved, while giving your island or table a rich, filled-in look.

6 In a living or family room, use a wide, plush sectional sofa to create a comfortable environment for day-to-day lounging. Even in a small space, a large sofa will make a room feel grand, and you'll be able to fit in a few extra guests when entertaining.



9. CB2: Reynolds Navy Velvet Chair **10. ARTERIORS:** Calvin Bar Stool **11. KORSON FURNITURE DESIGN:** Obax Tub Chair

Art & Mirrors

Scale is never more important than when talking about wall art – after all, it's hard to make a statement if you can't even see the piece.

7 Gallery walls have been a trend for nearly a decade, and they have their place, but there's also a beautiful simplicity to a singular large-scale canvas or photo print. Choose a piece that takes up at least 60 per cent of the available wall height to make a grand statement and a true focal point.

8 To capture the eye and also double the apparent size of the space, choose an oversize mirror hung prominently on the wall. A circular shape will add some softness to the room, perfect for a bedroom, living room or dressing suite.



A large pendant fixture with an airy form, like the angular fixture used in this transitional kitchen, gives a sense of balance.

A large scale makes your island a standout visual feature as well as a central hub.

Kitchen Islands

With eat-in kitchens being ever more popular, many are choosing islands much deeper than the typical 30 to 42 inches. A large scale makes your island a standout visual feature as well as a central hub.

9 To allow for both diners and a home chef to coexist in harmony, consider an island that's 48- to 60-inches deep, with seating on two or three sides to allow for natural conversation. With a truly comfortable island, you might not need a separate breakfast nook at all.

10 To suit the scale of a feature island, consider a marble or quartz counter with rich veining. Keep in mind that large-scale veins won't show well on a small sample, so you'll want to visit a quality showroom to see larger slabs and get the full picture. **OH**



online Discover more DIY projects at ourhomes.ca/mag/create

faux DEPRESSION GLASS



**GET THE VIBRANT LOOK
OF DEPRESSION-ERA
COLOURED GLASSWARE
FIRST MADE POPULAR
IN THE 1930S.**

PROJECT **DAWN MCCONNELL**
PHOTOGRAPHY **TARA CHATTELL**

TOOLS & MATERIALS

Clear glass candlesticks
or glassware
Waxed paper
Container for mixing
Elmer's Glue-All
Food colouring
Stir sticks
Water
Paintbrush

DIRECTIONS

Cover work area with waxed paper. In a mixing container, add 1 tablespoon of Elmer's glue and 4-6 drops of food colouring to achieve your desired colour. Mix well. Add ½ teaspoon of water, mix well. Paint the outside of your glassware. Let dry. For a deeper colour, apply a second coat after the first coat has dried. If you are painting plates or trays, apply mixture to the backs of items only (where food will not come in contact with the colouring). This finish is not washable. Spot clean with a damp cloth. **OH**

*A beautiful home
starts from the floor up*
Mannington Adura

From hardwood to laminate, vinyl, ceramic, natural stone, carpet and window coverings we have a large selection that will help you create that traditional, contemporary or modern space that you have always wanted.

NEW SHOWROOM ➔ NEW FLOORING PRODUCTS
AMAZING SELECTION OF AREA RUGS ➔ HUNTER DOUGLAS WINDOW COVERINGS

Sine's FLOORING
www.sinesflooring.ca

Cobourg 884 Division St. 905.372.9117	Brighton 23 George St. 613.475.2764
--	--

Toll Free: 800.354.3091
sinesflooring@bellnet.ca

susanbowie
sales representative
Integrity, Commitment and Passion

www.susanbowie.ca
cell: 705-760-3352
susanbowie@royallepage.ca

ROYAL LEPAGE
FRANK Real Estate, Brokerage
Independently Owned and Operated

244 Aylmer Street,
Peterborough, ON K9J 3K6
Office: 705-748-4056

Life royal lepage shelter founder

2012
2013
2015
2016
2017

Not intended to solicit those currently under contract.

Cottage Lifts

Turnkey or D.I.Y. Lifts | Repairs & Upgrades
In Business for over 25 Years

www.cottagelifts.com

@cottageliftsent 705.644.1011
@cottagelifts info@cottagelifts.com

Kitchen Cabinet Solutions

www.kitchencabinetsolutions.com

Specializing in custom kitchen design and installation for every lifestyle & budget.

689 Crown Drive Unit A, Peterborough
705.743.1299
Locally Owned Since 2000

Helping to Make THE RIGHT CHOICES

From floor to ceiling, in the kitchen and even behind walls.

PHOTOGRAPHY **WALTER FRANCZYK**

DEBBIE SKINKLE

*PRESIDENT
AyA Kitchen Designs*

What's new at AyA Kitchen Designs? “A minimalist aesthetic with clean lines and the ability to reduce clutter contribute to a stress-free environment; this is the philosophy we are seeing dominate in design,” says Debbie. “We are focusing on how we interact with the space around us to create harmony and balance in our lives. Open concept design, technology, integrated appliances and fixtures, effective storage solutions and timeless colours and materials allow form and function to complement each other like never before. It's very exciting.”

What are the advantages of using a kitchen designer? “Most people see the value in hiring professionals for new and renovation projects and the kitchen is an investment that has significant impact on our daily lives,” Debbie says. “At AyA Kitchen Designs, you are working with a team of experts who will provide a streamlined process to your kitchen renovation experience from start to finish. Our clients meet with kitchen designers who have extensive design and construction knowledge. We provide a visual design process, making it easier to understand and personalize. We take the apprehension away from the material and colour selection process by offering a wide range of options. Your project will be designed, managed and installed by in-house professionals. We remove the stress so our clients can enjoy the process and the results for years to come.”



LISA POSTMA & MICHELLE MERRALL

*SALES REPRESENTATIVES
VanVark Electric*

What is your store all about? As a full-service electrical contracting business and retail lighting showroom, in business for over 50 years, our goal is to help people make the right lighting choices for their home. We try to determine what the customer is looking for and guide them through the process of selecting the perfect light.

Why do customers come here? Our biggest selling point is our customer service. People come here because of our friendly and helpful staff who listen to our customers. We have quality light fixtures and our prices are competitive. VanVark Electric's showroom has a large selection of fixtures to choose from in many different styles. If a customer can't find what they are looking for in the showroom, they can browse through our catalogues or check out our website for more options.

What lighting trends do you see? “It's all about the bulb, the Edison bulb and the antique Victorian-style bulb for a warm retro-style feel,” says Michelle. Many contemporary fixtures display just the bulb for an open, transparent look with clean, symmetrical lines.

Continued on page 50





LARRY & MELANIE SINE

OWNERS
Sine's Flooring

What do you sell, supply and service?

"Basically anything to do with flooring," says Larry. Sine's supplies and installs ceramic tiles, natural stone, carpet, luxury vinyl plank flooring and sheet vinyl. "We do full walk-in showers, bathrooms, tile floors, walls, everything," says Melanie. Their two stores, in Cobourg and Brighton, carry a full line of Hunter Douglas blinds and have a qualified Hunter Douglas installer to do the measuring and installations, including shutters, roller shades, screens, verticals and venetian blinds.

Why do customers come to you? "We tend to take every job on as if it's our own," says Larry. "We want to make people happy, obviously. The installers are the same way. They don't rush through the job. They tend to take their time and make it like it's their own place, which we feel is very important. It's a friendly atmosphere," says Larry. "We joke with people. It's very casual. Life is stressful enough, we don't need this to be a stressful time," says Melanie. Many clients are second-generation customers, the children of people Sine's has dealt with before.

What do you enjoy about this work?

Helping people in the store make decisions, says Melanie. "The satisfaction after a job is done," says Larry. "People being happy – that's the joy of it."



ROBERT GLECOFF, MANAGER, NENA REDDOM, KITCHEN DESIGNER, TRACY MACFARLANE, KITCHEN DESIGNER, JANET SPROULE, FLOORING CONSULTANT, DIANA DICKSON, KITCHEN DESIGNER, SHANNON LEACY, DÉCOR CONSULTANT, GREG WOOD, FLOORING CONSULTANT
Cobourg Home Hardware Building Centre

Tell us about your design service: "Our design centre staff design kitchens, flooring and baths and make sure they can fulfill what customers desire when they come in for a renovation," says manager Robert Glecoff. We design all rooms and we supply kitchens, flooring tile, bath fixtures, some furniture and appliances. We're a whole house design centre," says Robert. Some staff members have been designing for more than 20 years. "They're very confident and comfortable in what they do. They have a very high customer satisfaction rate."

What makes work a pleasure? "Our people enjoy helping people fulfill their dreams," Robert says. "A redesign or a renovation is usually a dream, not a necessity, and people have a clear vision of what they want. I believe our design staff enjoy fulfilling that and helping clients succeed in reaching their goals." The store carries a range of products, fixtures and cabinetry to suit every budget." Anywhere your imagination goes we can take you there," he says. Home experts are also available at Gilmer's Home Hardware Building Centre in Port Hope. "They have an amazing showcase there, lots of great displays and ideas, and helpful staff."

Continued on page 52



HOWIE MURNEY
OWNER
Howie's Blinds

Tell us about your business: “I come to people’s homes and do free consultations about window coverings,” says owner Howie Murney. “I give them suggestions – the negatives and the positives, the dos and don’ts – about every blind. Then it’s up to them to make a choice about what type of window covering they want. I basically educate the customer and they’ll choose the direction they want to go.” Once a customer chooses window coverings, Howie installs them.

How did you get started? “It was 30 years ago,” Howie explains. “Pardon the pun, but

I got into the business blind. I didn’t have a clue about the industry.” At the suggestion of a friend, he got into the business as a manufacturer of venetian blinds. “After so many years, I just went on my own.” Working out of his home, he is able to be very cost-competitive. “When I put the price together for any customer, they get a pretty good deal.”

What do you enjoy about this work? “Meeting the people – people from all walks of life,” he says. “It’s surprising who you come across and who you meet.”

DOUG BELSEY
PRESIDENT
**TYLER LUCAS &
NICOLE YOUNG**
Focus Flooring Centre



Tell us about your business: Focus Flooring sells and installs hardwood, laminate and vinyl plank flooring as well as tiles and carpet. “We’re known for having an exceptional selection – a lot of stuff that you won’t find at another store,” says president Doug Belsey. “Some comes out of New York City and I’m the only one in Canada that carries it. Part of the appeal is that we have a very good selection. It’s unusual and different.”

What can you do for homeowners? “We will come out to their home and assist with the selection, measure and give a firm quote,” says Doug, who’s been in the business for 30 years. “There’s no charge or obligation for that. I’ve worked with a lot of designers and have a lot of experience helping people get these tough choices made. A lot of times, people are struggling making their choices and I’ve got experience at helping them get through it and get their selections made.”

What do you enjoy about this work? “I enjoy interior design and putting things together,” he says. “It’s my hobby as well as my job. Designing brings me a great deal of satisfaction – coming up with all these ideas,” he says pointing out his unusual store displays and unique fixtures. “It’s not just a store. It’s an experience.”

Continued on page 54



MATT GIRARD
OWNER
M&J Plumbing

What services and products do you offer? M&J Plumbing is a full service plumbing company, providing emergency service and small repair jobs, complete new home and commercial installations, drain cleaning and video camera inspection with locating services. It also provides bathroom renovations, well pumps and water filtration, water heaters and pressure tanks.

How did you get into this business? “I had the pleasure of working with other experienced plumbers as well as other contractors in the area when I started out,” says Matt. “Working in the GTA, as well as locally in Peterborough County, gave me a

vast knowledge of all different areas of my trade. With hard work and providing good service I have slowly built up my company. With the help of my wife, Jennifer and my exceptional team of employees, it all seemed to just roll into place. I am truly blessed to be surrounded by people who support my efforts and I enjoy the challenge and take satisfaction in the business my team and I have built.”

What’s your favourite part of this work? “Every day is different in the plumbing biz,” Matt admits. “One must adapt and overcome whether it be a simple issue or large job – you are always learning and adapting.” **OH**

SEE OUR DIRECTORY FOR ALL CONTACT INFORMATION.

the DESIGN GROUP

KITCHEN AND BATH DESIGN
CUSTOM CABINETRY
INSTALLATION

705.313.0357
26 King Street East Omeme ON

Mark Jenden Selway

Sales Representative Bowes & Cocks Limited Brokerage

Want to sell your house without the DRAMA?

Straight Talking. Honest Opinions. Hard Work. Effective Marketing. Extensive Knowledge.

NO FUSS. NO DRAMA.

Cell: 705 341 0453
Office: 705 742 4234
Email: selwaysells@aol.com
Web: bowesandcocks.com
Web: therelocator.ca

Not intended to solicit buyers or sellers currently under contract.

Black & Smith IRONWORKS

RAILINGS • FENCES • GATES • TABLE LEGS
OPEN SHELVING • CUSTOM PROJECTS

Barry Wiskel
905.396.7303
blackandsmithironworks.com

Log Furniture AND MORE

Cedar Barrel Sauna & Soaker Tub
Perfect for Relaxing at the Cottage

Shipped Directly to Your Home or Cottage.

Beds • Bunks • Dining Tables • Muskoka Chairs • Saunas
Bedding • Lighting • Decor • Pool Tables • Hammocks

E: info@logfurnitureandmore.ca • T: 800.557.0985 x 2
www.logfurnitureandmore.ca

Rub a Dub Dub

CHOOSING THE RIGHT TUB



VICTORIA + ALBERT: Vetralla 2 Freestanding Tub in Gloss Black

I am a huge fan of the showering experience. However, when I was expecting my first child and suffering shin splints, I found a soothing bath something I couldn't get through the night without. When you need to get clean quick, a shower is hands-down the way to go. If, however, you find yourself with more than a few minutes, running yourself a bath can be a rewarding and comforting personal experience. Picking the right tub for you is important.



STORY **CYNTHIA SODA**

STYLES

Bathtub manufacturers today offer a large assortment of styles, shapes and design features to coordinate with any taste and budget. While the most popular pin-worthy tubs are typically vessel free-standing or claw-foot, there are a multitude of options available to suit your needs. For those with limited square footage, a tub-shower combination or three-wall alcove design would be the most common tub style to maximize space. In standard-built homes, we've all seen the drop-in tub, made of enamel-coated cast iron, that sits fitted inside a framed enclosure. A more seamless alternative to the drop-in would be an undermount tub, which essentially is the same concept as an undermount vanity sink, only for your bathing pleasure.



NATIVE TRAILS: Avalon 62 NativeStone Freestanding Soaking Tub in Ash



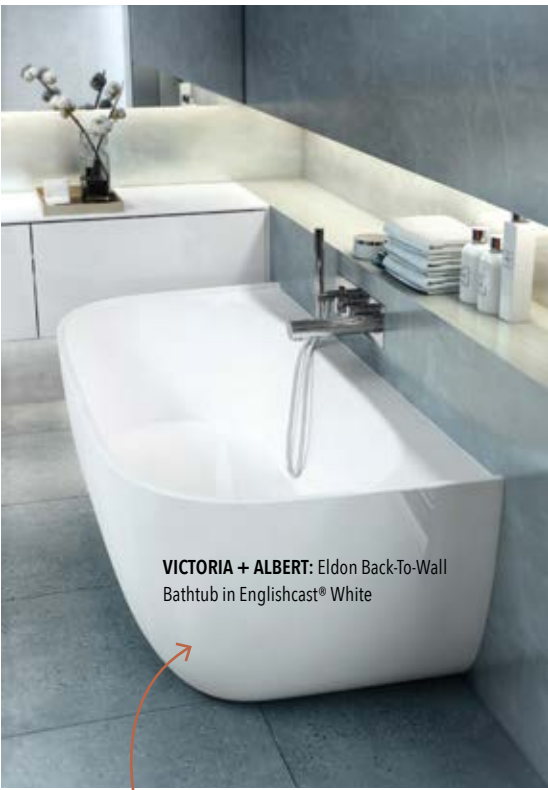
NATIVE TRAILS: Santorini Freestanding Copper Soaking Bathtub in Polished Copper

MATERIAL

The material that a tub is made from is also an important consideration for your investment in relaxation and comfort. The least expensive and lightweight options available are generally acrylic or fibreglass. The aforementioned cast iron is made by pouring molten iron into a mold, then smoothing and coating it with a thick layer of enamel. Possibly the most durable tub available, the finish is resistant to chipping, scratching and denting, as well as most types of chemicals. The cast iron option keeps bathing waters warm for a long period of time and although rewarding, they are one of the most challenging tubs to bring up a flight of stairs. If you're looking for something unique, you may consider a couture tub made of copper, enameled steel or even carved of stone or wood.

FAVOURITES

One great resource is Victoria + Albert with tubs crafted from the brand's signature Englishcast composition, a unique blend of a naturally white material that is rich in volcanic limestone and high-performance resins, hand-finished to create a glossy white coating with excellent stain resistance. They also offer a choice of trending colour options. Since the material is solid all the way through, internal scratches simply polish away. In our latest bathroom remodel, I can personally speak for the quality of a Victoria + Albert tub. For us, with four little ones who enjoy splashing around in mom and dad's bathroom, the Eldon tub was the perfect fit. Wanting to have luxe European-modern style and not having to worry about clean up behind the tub was the dilemma. The Eldon appears completely free-standing from the front, but its back-to-wall design makes it perfect for busy families with style.



VICTORIA + ALBERT: Eldon Back-To-Wall Bathtub in Englishcast® White

The best of both worlds. Get the modern style of a free-standing vessel tub, with the practicality of an enclosed tub.

BELLS & WHISTLES

A quiet soak is not the only appeal of the tub experience so some amenities may be important to research. Jets, in-line heaters, chromatherapy, music, air-only jets, or sit in your very own champagne and soak with micro-bubble effervescent jets.

TEST DRIVE IT

Not all bathtubs are created equal. Depending on the features you choose, prices range from the hundreds to the tens of thousands. One of the most important things you can do as a consumer is take a test drive – that's right, go and physically sit in the tub you plan to invest in to make sure you like the fit and depth. After all, the bathtub can be more than just a beautiful piece of sculpture in your bathroom, you can, you know, use it. **OH**

cooking at home

RECIPE AND PHOTOGRAPHY
JENELLE MCCULLOCH



GRILLED
CHEESE
minis

The grilled cheese sandwich has been around since the inventions of processed cheese and sliced bread. For your next party or luncheon, here are three elevated takes on everyone’s favourite sandwich. After all, it’s what’s inside that counts.

TO ASSEMBLE

1 baguette, sliced

Butter

Choice of filling

Slice baguette into an even number of pieces. Butter one side of each piece.

Place slices butter side down in a frying pan over medium heat.

Fill each sandwich with toppings outlined in the recipes to follow. Top with a second slice of baguette, butter-side up.

Cook until bottom slice is golden brown, flip and repeat.

1. Peach & Candied Bacon Filling

Gouda cheese, sliced

1 or 2 fresh peaches, thinly sliced

Candied bacon (see below)

Dijon marmalade (see below)

Arugula

Fresh sage, lightly fried

CANDIED BACON

¼ cup brown sugar

⅓ cup maple syrup

Black pepper

1 pound thick sliced bacon

Preheat oven to 400°F, line a baking sheet with aluminum foil and top with a wire rack.

In a small bowl combine brown sugar, maple syrup and pepper.

Lay bacon slices on wire rack, brush with sugar mixture, flip and brush other side.

Bake for 10-15 minutes, flip slices over and continue to bake until crisp and caramelized.

DIJON MARMALADE

1 Tbsp Dijon mustard

1 Tbsp marmalade

Black pepper

Combine Dijon mustard and marmalade. Season with black pepper.

2. Fig & Onion Filling

Brie cheese, sliced

Fig caramelized onions (see below)

Arugula

FIG CARAMELIZED ONIONS

1 Tbsp olive oil

1 cup white onion, thinly sliced

2 figs, diced

Splash of balsamic vinegar

Salt & pepper

In a pan over medium heat, add olive oil and onions. Slowly cook onions until golden brown, about 20 minutes.

Once caramelized, add diced figs and a splash of balsamic vinegar. Allow the vinegar to deglaze the bottom of the pan and scrape up all of the bits on the pan.

Season with salt and pepper and set aside to cool.

3. Spinach Walnut Pesto Filling

Gorgonzola cheese, sliced

Spinach pesto (see below)

Dried cranberries

SPINACH PESTO

Heaping handful of fresh spinach

Handful of fresh basil

½ cup walnuts

¼ cup parmesan cheese, grated

2 cloves garlic

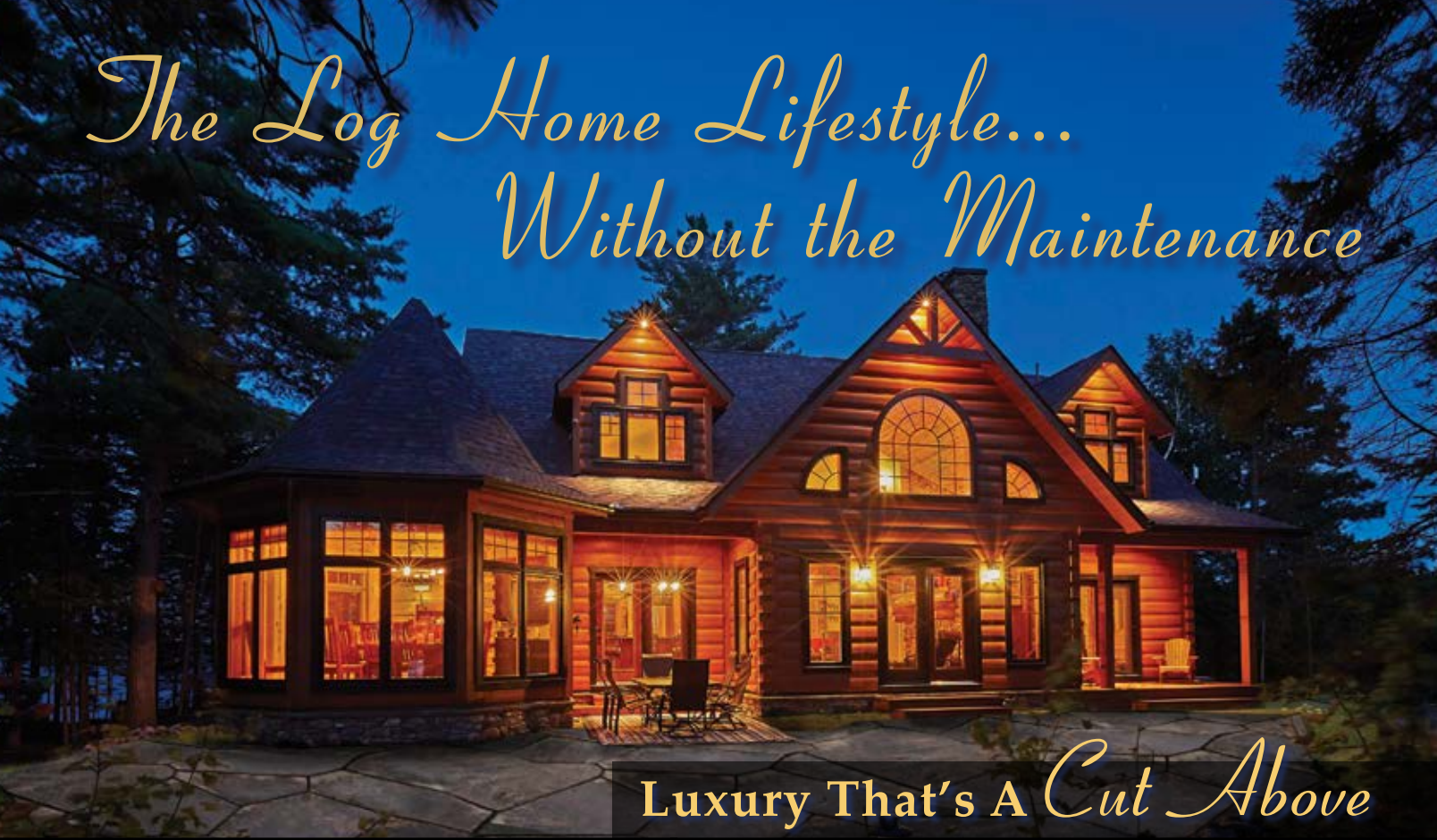
2 Tbsp olive oil

Salt and pepper

In a food processor, add spinach, basil, walnuts, parmesan and garlic.

Turn processor on and slowly add olive oil. Process until smooth

Season with salt and pepper to taste. **OH**



Luxury That’s A Cut Above



Project Management and Building Services Available
Dealer, Sales & Builder Inquiries Welcome

1.800.661.1628

info@truenorthloghomes.com



Visit Our All NEW Website:

www.truenorthloghomes.com



2017
MANUFACTURER OF THE YEAR
2018
Award for Excellence in HOME DESIGN



BIRCHVIEW DESIGN – WHY HIRING A PROFESSIONAL IS A GREAT INVESTMENT

Before building or renovating your new home or cottage it pays to talk to an expert first. With so many decisions to make, ideas to put together, and planning, it's far more cost-effective in the long run to enlist the help of a professional. It will save you time and you can avoid costly mistakes, making the entire experience less stressful and far more enjoyable for you.

Birchview Design can assist you with your project from colour consultations all the way through to the final, finished, beautifully designed space. The design team at Birchview Design meets with the clients at the planning stage to discuss the clients' vision – something that is maintained throughout the entire process. They offer a number of services including new build interior/exterior finishes, complete kitchen design by an award-winning team, large and small renovations, custom re-upholstery and drapery, custom mudrooms, built-ins and dog washes.

Birchview Design is a member of the Peterborough & Kawartha Homebuilders' Association, The Peterborough Chamber of Commerce, and chosen Commercial Design Team for 'Win This Space' 2018. **Give them a call to discuss your next dream project: 705.740.3988**
birchviewdesign.com
(Please see ad on pg 10)



JO PILLON – ROYAL LEPAGE

SERVICE. Somewhere along the line in our busy lives, the concept of SERVICE has become obsolete – the exception, rather the rule. My experience over the years has enriched me with the knowledge and understanding of the service industry in which Real Estate is so important. 20 years in the optometric field was rewarding because I worked for my patients – it was an easy transition to serving my clients with the same respect, caring, and SERVICE that goes the extra mile.

When asked what I do for a living, I reply – "I deal with people's hopes and dreams, and often their life savings". Trust in your representative, be it Buying, or Selling, is imperative in a successful venture. SERVICE to my clients is my obligation as a REALTOR, and my joy as a human being to provide each and every one the courtesy, respect and integrity I bring to the table. Royal LePage is more than 100 years old. A Canadian company, proud to carry the slogan HELPING YOU IS WHAT WE DO. My heart is in that slogan, and my personal statement – It's SERVICE that sells homes.

Jo Pillon, your SERVICE professional. Award winner for eleven consecutive years, 2017 Directors Platinum Award Winner – representing the top 5% in the marketplace.

Jo Pillon – Royal LePage Frank Real Estate Brokerage Peterborough
Office: 705.748.4056
Cell: 705.875.4958
lookingforahome.ca
(Please see ad on pg 35)



SIGNARAMA – SIGNAGE SOLUTIONS BIG OR SMALL, WE DO IT ALL!

Signarama Peterborough is the Kawartha's full-service sign centre. We use the latest technology and highest quality products to produce custom signs for your business. We can make the perfect signs to advertise your products or to inform your customers, while keeping the image and brand of your company intact.

Signarama Peterborough can custom make any type of sign for your business. Our fully custom shop can handle virtually any project from design to build.

We offer vehicle wraps, ad specialty items, banners, box signs, channel letters, custom graphics, custom logos, digital graphics, directory signs, individual letters and more!

We also do many specialized projects such as customized wayfinding packages, pylon signage build and install, electronic digital displays and touchscreens and even digital signage board retrofits or install.

Call us today at 705.742.9994
or visit us at
signaramapeterborough.com
(Please see ad on pg 35)



GET STAGING & DESIGN

Hi there, I am **Corinne Jenden-Selway**, owner and designer/stager of **Get Staging & Design**. I am in the real estate staging business and work with real estate agents and homeowners who are determined to secure the most equity in the shortest amount of time when selling their homes. Staging is a powerful and practical marketing strategy that I use to enhance the features of a property for sale. If you understand the importance of detailing a car before it is sold then you will understand the importance of staging a property for sale.

If you have or are looking to put your property for sale, be it occupied or vacant, it has to be done well. I will tell you that 'good staging is not cheap and cheap staging is not good' and that is why you should seek the advice and help from a trained professional.

I am a proud member of RESA (Real Estate Staging Association), a Certified Staging Professional (CSP), Certified Colour Consultant (CCC) and a Vacant Staging Specialist (VSS). I will help take the stress out of getting your property ready for sale and reaching its full potential.

If you want to make your home easy to sell, make it easy to buy. STAGE IT! with Get Staging & Design.
705.879.9119
Corinne@GetStaging.ca
GetStaging.ca
(Please see ad on pg 41)

Advertise With Us



Give your business the benefit of premium exposure and connect, like never before, to our extensive targeted readership!

Premium
high gloss
coffee table
magazine

Most targeted distribution via
neighbourhood and personalized mail
delivery to high value households and
businesses throughout the area

Distribution throughout select fine
furniture stores, real estate offices, builder
show homes, golf and country clubs and
other high value, high traffic locations

OUR HOMES publishes 14 regional magazines
quarterly in the following LOCAL markets:

- Barrie/Orillia/Midland • Grey Bruce • Hamilton • London • Muskoka • Niagara
- Oakville/Burlington/Mississauga • Ottawa • Peterborough • Southern Georgian Bay
- Toronto & York Region • Region of Waterloo • Wellington County/Orangeville/Caledon • Windsor

CONTACT US FOR MORE INFORMATION:

Lisa Leonard Account Executive **T: 705.750.7736** **E: lisa.leonard@ourhomes.ca**

Lisa Merrell Customer Retention & Distribution
T: 705.445.5065 x200 or 1.877.600.4840 x1 **E: lisa.merrell@ourhomes.ca**



STYLE • COMFORT • IDEAS • REAL ESTATE
ourhomes
celebrating life at home



DON LAFONTE EXCAVATING

Don LaFonte Excavating is a second generation, full service excavation company. Located just minutes south of Peterborough, we are proud to offer our services to Peterborough and the surrounding areas.

Our skilled contractors are capable of tackling residential and commercial jobs, providing quality service to a diverse range of clients. We have the experience and people to make your job successful.

Some of the many services we offer include:

- Roads
- Basements
- Fence Bottom Removal
- Fine Grading
- Drag Line
- Pull Scrapers
- Concrete Breaking and Removal
- Heavy Duty Brush Cutting
- Field Tile Draining
- Ponds
- Trucking
- Lot Clearing and Filling
- Snow Removal
- Top Soil Screened and Delivered
- Float Services
- Heavy and Light Equipment

Here at Don LaFonte Excavating, we are committed to providing clients with expert excavation services at an affordable price. Give us a call, there's no job too big or small!

705.927.0913
donlafonteexcavating@
hotmail.com

(Please see ad on pg 34)



TWOHEY HOME – STYLISH FURNISHINGS FOR OVER 50 YEARS

Twohey Home has been family owned and operated in Peterborough since 1959. Now into its third generation, Twohey's has recently rebranded with a new logo and has renovated their upscale interior to reduce their carbon footprint.

Twohey Home specializes in Canadian made, custom order furnishings, solid wood furniture and premium sleep sets. In their showroom is a wide selection of high quality sofas, chairs, sectionals, accent pieces, dining room and customizable office furniture. They now have an extensive array of lighting including table lamps, floor lamps and chandeliers. Their bedding experts help customers find that perfect fit in a mattress and box spring.

Knowledgeable staff, all with interior design backgrounds, can offer full design services. In-home consultations are also available. If you are buying furniture for a room with a colour scheme, they can recommend complementary colours and styles. If you are starting from scratch, they will work with you to find your own unique style and colours.

Linda Twohey and her daughter Heather Twohey have lived in Peterborough all their lives and both feel a strong commitment to the community. They support many local organizations.

Drop by to see
their new showroom
129 Aylmer St N
705.748.9551
twoheyhome.com

(Please see ad on pg 3)



MARK JENDEN-SELWAY – BOWES & COCKS

What the heck is going on with the real estate market? Some properties seem to be selling for crazy money, often over asking price whilst others sit on the market for weeks – why is that? Is now a good time to sell? As a new buyer should you be getting into the market now or wait – won't prices be coming down soon? Confused?

I'm not surprised! I am **Mark Jenden-Selway, Sales Representative at Bowes & Cocks Limited Brokerage.**

These are questions I help my clients answer every day. Now is the time you need good, honest and unbiased advice from a trusted local Realtor. At Bowes and Cocks we have been in business in the local area for over 60 years – we understand the market.

If you are buying, I can help you find the 'keepers' from the 'leave well alone' properties. If you're selling I can help you present your house or cottage for sale in the best possible light so you can maximize your returns. I will work hard for you to get the results you want. Call me to get no nonsense, practical advice and we can buy or sell together without all the drama!

Mark Jenden-Selway
Sales Representative
Bowes & Cocks
Cell 705.341.0453
Office 705.742.4234
bowesandcocks.com
therelocator.ca

(Please see ad on pg 55)



WOOD BY DESIGN

Wood By Design, a locally owned business, has been creating quality custom kitchen and cabinetry since 2005. Our success stems from our high quality, customer service and a skilled team of employees.

At Wood By Design we go above and beyond to ensure that every customer is completely satisfied. We offer free consultations in our showroom or at your home and provide you with 3D conceptual drawings of your project. Our design team is open to your ideas or can offer full design services to achieve the look you want, within your budget.

Wood By Design manufactures and finishes your project in our new facility, which means we can customize any colour, stain, distressed look, or a high gloss modern finish. Our design team is experienced with many design styles from traditional to contemporary.

Come visit our showroom where you will find a wide selection of door styles and finishes, hardware and accessories, as well as granite and quartz countertops. At Wood By Design we strive to exceed your expectations with attractive and functional cabinetry.

Visit or contact us:
5 Indacom Dr, Douro-Dummer
705.761.7770
woodbydesign.ca
Follow us on Facebook

(Please see ad on pg 43)

THIS IS HOME



STALWOODHOMES.CA

ESTATE • FULLY-DETACHED • SEMI-DETACHED • TOWNS • CONDOS





EVERYONE into the POOL

Did someone say pool party? Create a tropical paradise of your own and have some summer fun. Don't forget the music!

1. **PARTY CITY:** Pineapple LED String Lights 2. **VIVERE:** Brazilian Style Single Hammock in Salsa 3. **ABBOTT:** Small Jungle Leaf Hurricane 4. **SAFAVIEH:** Monterey Outdoor Bar Table in Teak Look 5. **PIER 1 IMPORTS:** Safari Jungle Party Melamine Salad Plates 6. **PIER 1 IMPORTS:** Parrot Ceramic Pitcher 7. **PIER 1 IMPORTS:** Vivid Aluminum Tumblers 8. **SILK PLANT HOME DÉCOR & MORE:** Areca Palm 9. **SAFAVIEH:** Deltana Indoor/Outdoor Bar Stool in Beige 10. **THE BEACH GLASS:** Floating Acrylic Beverage Holder in Teal Tides 11. **SWIMLINE:** Giant Flamingo Pool Float 12. **PIER 1 IMPORTS:** Wooden Seahorse Serving Board 13. **SIMONS MAISON:** Sorbet Stripe Beach Towel 14. **BLOMUS:** Stainless Steel Gel Burning Outdoor Garden Torch **OH**

OUR HOMES attracts the area's finest businesses to advertise in our pages, and utilize our unparalleled distribution and coffee-table appeal to market their products and services. We're making it easier for you, our readers, to become educated as you plan your home- and real estate-related purchasing decisions. View these business ads online at ourhomes.ca/peterborough. The listings below are organized alphabetically by industry.

APPLIANCES

Bert's Appliances, 35
Peterborough Appliances, 68

ARCHITECTS/ARCHITECTURAL DESIGN

Normerica, 13

AUTOMOBILE SALES AND SERVICE

Currie Tire Limited, 34
Subaru Canada, 4

BOATING & DOCKING

Kawartha Docks, 34

BUILDERS & NEW HOME DEVELOPMENT

1867 Confederation Log Homes, 19
Chemong Home Hardware Building Centre, 7
Linwood Custom Homes, 31
Normerica, 13
Royal Homes Ltd., 15
RWH Construction, 2
Stalwood Homes, 63
True North Log Homes, 59
Your Own Design, 35

COUNTERTOPS, GRANITE & STONE

Custom Built Solutions Inc., 29
Delray Granite, 5
Greenville Soapstone Company, 27

DISPOSAL

North Kawartha Disposal, 34

ELEVATORS & LIFT SYSTEMS

Cottage Lifts, 47

EXCAVATING/SEPTIC

Don LaFonte Excavating, 34, 62

FINE WOODWORKING/CUSTOM FURNITURE/CARPENTRY

Cabinetree, 11
Goodwin Creations, 41
Log Furniture & More, 55
Wood By Design, 43, 62

FIREPLACES & STOVES

Southern Comfort Hearth & Home, 67
Stûv, 9

FLOORING, STAIRS & TRIM

Focus Flooring, 8
Sine's Flooring, 47

FURNITURE/HOME DÉCOR/ INTERIOR DESIGN/GIFTS

Birchview Design, 10, 60
Lakeshore Designs, 43
Lockside Trading Company, 21
My Favourite Things, 43
Shoreline Furniture Co., 29
Southern Comfort Hearth & Home, 67
The Design Group, 55
Twohey Home, 3, 62

GARAGE DOORS

Overhead Door, 35

GARDENING/GREENHOUSES/ NURSERIES

Griffin's Greenhouses, 43

HOME IMPROVEMENTS/ RENOVATIONS

Normerica, 13
Stalwood Homes, 63
Your Own Design, 35

HOME SECURITY

Trent Security Systems Ltd., 34

HOME STAGING

Get Staging & Design, 41, 60

IRONWORK

Black & Smith Ironworks, 55

KITCHEN AND BATH

AyA Kitchen Designs, 41
Custom Built Solutions Inc., 29
Delray Granite, 5
Harwood Kitchens, 27
Kitchen Cabinet Solutions, 47
The Design Group, 55
Wood By Design, 43, 62

LANDSCAPING/LAWN & GARDEN

Don LaFonte Excavating, 34, 62
Gray Landscape Construction, 35

LIGHTING

Vanvark Electric, 41

PAINTING & DECORATING

Benjamin Moore, 6
Charlotte Paint & Wallpaper, 6, 27
Cobourg Paint & Wallpaper, 6
Colour Concepts, 6
Newcastle Home Décor & Design, 6
Village Paint & Paper, 6

PLUMBING & ELECTRICAL

Chandos Plumbing Inc., 41
M & J Plumbing, 34

REAL ESTATE

Bowes and Cocks Ltd. Real Estate Brokerage – Mark Jenden-Selway, 55, 62
Exit Realty Liftlock Brokerage – Stephen Coughlin, 34
RE/MAX All-Stars Realty Inc. – Cathy Hopkins Poole, 35
Royal LePage Frank Real Estate – Susan Bowie, 47
Royal LePage Frank Real Estate – Jo Pillon, 35, 60

ROOFING

Steel Tile Co., 29

SIGNAGE

Signarama, 35, 60

TREE CARE SERVICES/ ARBORICULTURE/ARBORIST

Logan Tree Experts, 34

WELL DRILLING

G. Hart & Sons Well Drilling Ltd., 29

WINDOW FASHIONS

Howie's Blinds, 35
Sine's Flooring, 47

OUR HOMES is committed to ensuring the businesses above appear under the correct headings. To make a correction, or to have your business listed under more than one heading, please email lisa.leonard@ourhomes.ca or lisa.merrell@ourhomes.ca. To have your business listed in our Home Resource Directory, call us to advertise at 705.750.7736, 705.445.5065 x200 or 1.877.600.4840 x1.

finishing touch



1 JONATHAN ADLER: Lampert Sofa in Venice Peacock



2 ROCHE BOBOIS: Odea Sofa in Sea Green



3 BRENTWOOD CLASSICS: Lunetta Sofa in Samira Red



4 STRUCTUBE: Emilie Velvet Sofa in Green



5 ELTE: Hunter Sofa



6 THE ART SHOPPE: Blush Sofa



7 NUEVO: Janis Sectional Sofa in Midnight Blue



8 MOOOI: Boutique Delft Blue Jumper OH

BOLD & beautiful

Make a statement in your favourite lounging space with a sofa in a bold colour.



GET INSPIRED at SOUTHERN COMFORT



8 Callaghan Road, Lindsay • 705.324.2555

www.southerncomfort.ca

Whether you're building a new home, renovating or just looking for a fresh look make your destination Southern Comfort Hearth and Home for anything Furniture or Fireplaces.

Over 30 fireplaces, stoves and inserts on display in the showroom for all fuel types, gas/propane, wood, pellet and electric.

Visit our showroom filled with furniture, art, rugs, lighting, accessories and more.

KitchenAid



PETERBOROUGH APPLIANCES

Your Appliances Superstore

Learn more by visiting Peterborough Appliances

1.888.680.6220 | 705.748.9781 | www.PeterboroughAppliances.com
Warehouse and Showroom located at 2849 Lakefield Road, Peterborough

KitchenAid

AT LAST, A RANGE FOR THOSE
WHO MAKE A **STATEMENT** WITH EVERYTHING THEY CREATE.