

A GOLFER'S PERFECT ADDRESS



4 Floor-to-ceiling 18-foot great room windows face the bay. Look up to 10-foot ceilings in all main-floor rooms and nine-foot ceilings on the second storey and in the basement.

STORY **LAUREL FORTIN**
PHOTOGRAPHY **SANDY MACKAY**

Only the turf crew at the Georgian Bay Club knows which of the five tee decks and six pin quadrants on each hole will be in play during your next golf game, and that's only after careful consideration of the wind speed and humidity on the turf. You, on the other hand, will consider your stance and swing equally as carefully before addressing your ball.

Once the round is over, do you trade in your golf cart for car keys? Or do you pull your cart up to one of the semi-detached luxury townhomes overlooking the 10th fairway?

The Private Residences At The Georgian Bay Club have broken ground on 56 units with some of the most spectacular views on the escarpment. We've got 10 reasons why you might like to make one of them your home.

1 Two-storey semi-detached models start at 1,900 sq. ft. with two bedrooms and two bathrooms and climb to 3,340 sq. ft. with four bedrooms and 3.5 bathrooms. All units have walk-out private patios.

2 The club is next door to the area's leading ski clubs and the Georgian Trail, and a short drive to Collingwood, Thornbury and the Village at Blue Mountain.

3 Developer **Georgian Bay Estates Limited** has brought together an exceptional team to design and build: architecture **Brad Abbott Design**; custom home builder **Patrick B. Coulter & Associates**; interior design **Redman Watson Inc.** and landscape installation and maintenance **The Landmark Group**.

5

The whole home is automated with a Crestron system including an option to frame a television above the fireplace with motorized artwork that lifts to reveal the screen.



6 Sound attenuation materials in the floor, walls and ceilings limit sound transmission. Standard flooring is seven-inch plank hardwood and stone or tile is found in the entry, bathrooms and mudroom.



7 Solid wood, fine kitchen cabinetry is produced by Downsview Kitchens and Sub-Zero and Wolf appliances are standard.

8 A private two-car garage has direct access to both the basement and the mud/laundry room. *Continued on page 90*



9 The main floor master suite spreads over 400 square feet, including a fireplace, walk-in closet and walk-out patio.



10 The 130 LED pot lights in the home draw only 600 watts of power. All bathrooms feature motion sensor lights and closets have automatic lights as well.

The Private Residences model home and presentation gallery is open Friday through Monday, 1 p.m. to 5 p.m. or by appointment at privateresatgbc.com. **OH**

"Let's Decorate!"
Your Home

Salnek's Custom Window Treatments offers a unique selection of Blinds, Drapery and more for your home.

- Manual and Motorized Shading Solutions
- Unique Drapery Hardware
- Roman Shades, Valances, Cornices
- Reupholstery and Redesign of existing Furniture
- Area Rugs

***Call for your in-home consultation**

HunterDouglas *Galleries*

SALNEK'S™
CUSTOM WINDOW TREATMENTS
COLLINGWOOD · DUNDAS · TORONTO · MUSKOKA · MARKHAM
705.737.4200
#307-34 CEDAR POINTE DRIVE, BARRIE | WWW.SALNEK.CA

Landscape Assessment
Plant Health Care
Soil Analysis
Tree & Shrub Planting
Tree & Shrub Establishment

WillowStone
A Plant Health Care Company
RR #1, Clarksburg, ON 519.599.7470
willowstone.ca

TDI
Building Excellence

ADDITIONS | RENOVATIONS
tdiconstruction.ca
705-441-3079

let it snow!

124 & 126
Hurontario street
Collingwood

leuk
Flowers
Gifts
Home
Design
Weddings

705.445.4694 | 705.446.2626 | leukbijhermas.ca

SMALL IS BEAUTIFUL

STORY **LAUREL FORTIN**
PHOTOGRAPHY **SANDY MACKAY**



2

These homes have impeccable kitchen cabinetry and built-ins in the master suite, reading room and gear room.

3

Designing a smaller home that functions as well as a larger home requires experience and skill. "It is a greater challenge to design a smaller home that still feels big," says William, who is up for the challenge.

4

William's architectural designs consider site orientation and room flow to maximize natural light and the connection to the outdoors.

5

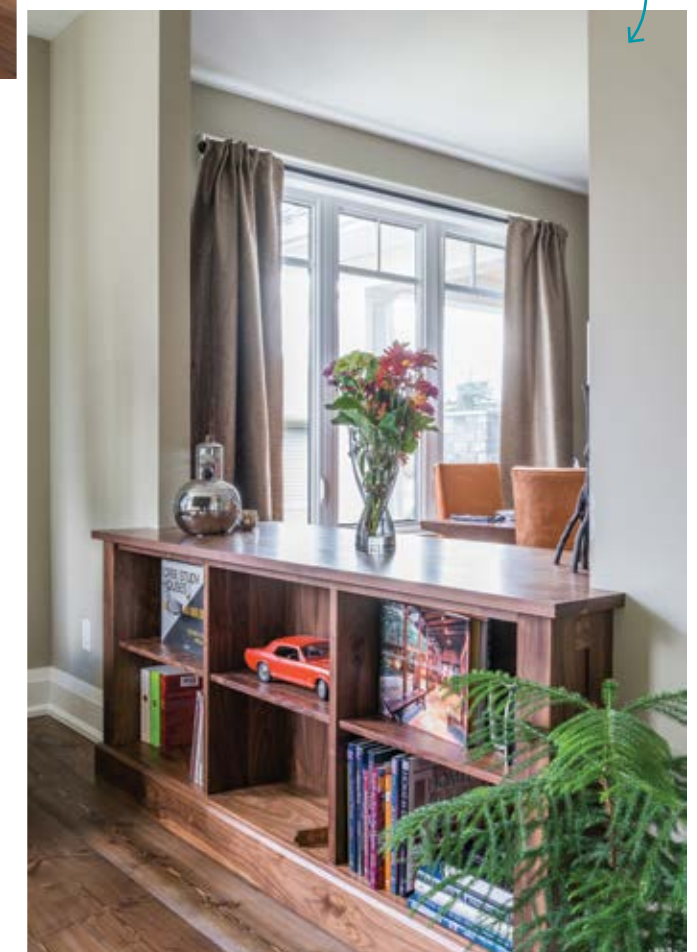
The home is open concept but uses partial walls to divide conversation spaces from the main living space. *Continued on page 94*

Black Tusk's William Brown and Barbara Patton-Brown have been quietly paving the road to Southern Georgian Bay for homeowners for over a decade.

Clients initially brought the Whistler-area builder to Collingwood for a single, custom-home build, which led to another project, which led to another – the region is now dotted with Black Tusk homes. The level of craftsmanship and quality Black Tusk offers their designs and custom constructions has given countless clients a happy home.

But the collaboration between William and Barbara, however, is leading them to a new kind of exciting home market: homes with more modest footprints that offer the excellence of a Black Tusk build. They're currently putting up a second prototype home in Lora Bay: 1,900 square feet of uncompromising quality in an active community. Here are 10 reasons why small is beautiful:

1 Homes with a smaller footprint use fewer materials and are friendlier to the environment: fewer materials and less waste equal a smaller carbon footprint. This is becoming increasingly important to clients who don't want to wait for retirement to enjoy the lifestyle Southern Georgian Bay offers, yet who realize they don't want or need an elaborate space.





6 Black Tusk's love of natural materials incorporates interesting wood and stone throughout the homes, such as reclaimed fir flooring or live-edge counters.



7

Bungalow living is the current trend for small homes, where amenities and the master bedroom suite are accessible on the main floor. Less frequently used spaces, such as bedrooms for visiting children and guests, are incorporated into a pleasant, bright lower level.



8 Barbara's interior designs synchronise with William's rooms, finishes and amenities for an inherently pleasing result – Black Tusk is a true concept-to-completion design build firm.

9 The prototype Lora Bay home showcases the possibilities in action rather than models with a set of features and upgrades.

10 The outdoors is accessible all year round – an important element to Black Tusk – via a four-season covered porch with outdoor fireplace (see it in Barbara and William's photo on page 74).

The Black Tusk show home is available for showings by appointment at blacktuskdev.com. **OH**

Attention to detail.
It's the little things that count.

RIVERSIDE
CUSTOM CABINETS LTD.
705.444.3479
Rob Perry
riversidecustomcabinets.ca

**NORTHLAND
CUSTOM FLOORING INC**
"You are walking on our reputation"

**Specializing In...
Dust Free Refinishing**

We Supply & Install
Unfinished, Pre-finished &
Reclaimed Flooring
(Solid, Engineered, Laminate)

705.429.7543
Info@NorthlandCustomFlooring.ca
NorthlandCustomFlooring.ca

LEGENDARY GROUP

Prefabricated Custom Homes
Timber Frame • Hybrid • Modern
Collingwood 705.444.0400

HYBRID
BUILDING SYSTEM
hybridbuildingsystem.com
legendarylog.com

LOFT
PLANNING INC

Land Use Planning | Project Management

Kristine A. Loft, Principal
BES BAA MCIP RPP
705.446.1168
LoftPlanning.com



FRONT ROW SEATS

STORY **LAUREL FORTIN**
PHOTOGRAPHY **SANDY MACKAY**

The region's playground spreads out before you at **Windrose Estates**. It's located at the base of the escarpment and barely a two-minute drive from downtown Collingwood. The runs at Osler Bluff Ski Club beckon to the south and the lights of Blue Mountain shine to the north. The second-storey view from the **MacPherson Builders Ltd.** model estate home is an uninterrupted sightline across the mountain and surrounding fields. Here are 10 reasons to escort yourself to the front row seats of the region.

1 With numerous home floor plans to choose from, the Britannia model provides a taste of the workmanship and quality materials MacPherson brings to their builds. Plans range from 2,492 to 4,062 sq. ft. estate homes, including two bungalow options.



2 Two-acre or one-acre town lots offer more than enough space to create a private playground retreat of your own.

3 MacPherson's designer Michelle Pasquale works with all clients to select the optimal design and finishes.

4 The 4,000 sq. ft. Britannia model home has post-and-beam detailing with upscale finishes in a rustic tone to complement the surrounding geography.



5 A two-storey fireplace evokes the limestone on the escarpment.

6 The model home was customized by Pasquale to include a double-sided fireplace between the great room and the dining room. The dining space can optionally be built as an outdoor room by relocating the dining room to the front of the house, with the servery separating it from the kitchen.

7 A tongue-and-groove ceiling in the dining room creates continuity with the post-and-beam style.
Continued on page 98





8 Brushed-oak flooring creates depth and dimension in a neutral palette. Warm off-white walls contrast with the dark woods of the post-and-beam accents.

9 MacPherson’s designs are trending toward the same warmth and comfort of traditional ski chalets, but with the kind of contemporary touches you might find in more urban homes.

The model home at Windrose Estates is open Saturday and Sunday from 12 to 5 p.m. or weekdays by appointment at 705.446.7601 at 4 Meadowlark Way, Collingwood (south of Sixth St., east of Osler Bluff Rd.). OH

10 A bay window and open ceiling rafters emphasize the grandeur of the master bedroom. The luxury continues the en suite, with a built-in tub and glass, steam shower.



Homes Featured in Magazines



- featured in CANADIAN HOUSE & HOME Magazine
- featured in ON THE BAY Magazine
- featured in OUR HOMES Magazine

"I knew that I could tell him what I wanted and I could trust it would be built to look like that. He was a great listener. And our home is absolutely the home of our dreams."
—Jana Temple on the second home recently built for her and her husband by Paragon Carpentry.



Robin Smith, Builder www.paragoncarpentry.ca

- OFFERING A COMPLETE BUILDING SERVICE
- GENERAL CONTRACTING
 - MAJOR RENOVATIONS • ADDITIONS

Thornbury

(705) 444-3887

www.paragoncarpentry.ca



FOR A SPACE
LESS ORDINARY



Bathworks
Love Your Space

516 BRYNE DRIVE, BARRIE • 705 722 4125

EXCLUSIVE DEALER OF DXV AMERICAN STANDARD PRODUCTS AJAX • BARRIE • BELLEVILLE • KINGSTON • ST. CATHARINES