

showcase

This Viceroy show home by Scotbuild Custom Home Builder welcomes loads of natural light through walls of high-quality windows, and still manages to offer warm, intimate spaces like the dining room off the main entranceway. Many furniture pieces and accessories were purchased at Macdonald's Countrywide Furniture & Appliances in Meaford.

CUSTOM CREATIONS

BY JIM FOX // PHOTOGRAPHY BY SANDY MACKAY

Scott Young, a local custom builder with over 25 years of experience, comes by his craft honestly.

In his youth he served his carpentry apprenticeship in the Royal Burgh of Linlithgow, Scotland and brings an old-school work ethic and pride of construction to Canada. His family company, **Scotbuild Custom Home Builder**, specializes in constructing **Viceroy** homes and has recently opened a 2,310 sq. ft. show home on Mountain Road in Collingwood. *Continued on page 86*



Attention to detail and unique features, such as a built-in headboard with a piano window in the master suite, and a stainless steel backsplash and real stone wall in the kitchen, are what give Scotbuild homes the wow factor.

This spacious, four-bedroom open-concept country home features plenty of natural light, cathedral ceilings in the great room, a large kitchen and a comfortable family room. Other amenities include a mudroom and a laundry room with garage access.

Since its opening this past fall, Scott is pleasantly surprised by the large number of people who have expressed serious interest in having one of the 150 Viceroy models constructed in the Southern Georgian Bay area.

Scott and his five full-time employees work with a number of local subcontractors, such as **Madriver Electric** of Stayner, **Huron Alarms** of Collingwood, **Precision Septic & Earthworks Ltd.** of Ravenna and **Bumstead Bros Plumbing & Heating** of Owen Sound to ensure customer satisfaction. "We pride ourselves on using local trades," states Young. "We all live in the area. So if something happens during or after construction we're always here to help. As local people we are very aware that you are only as good as your last job." *Continued on page 88*



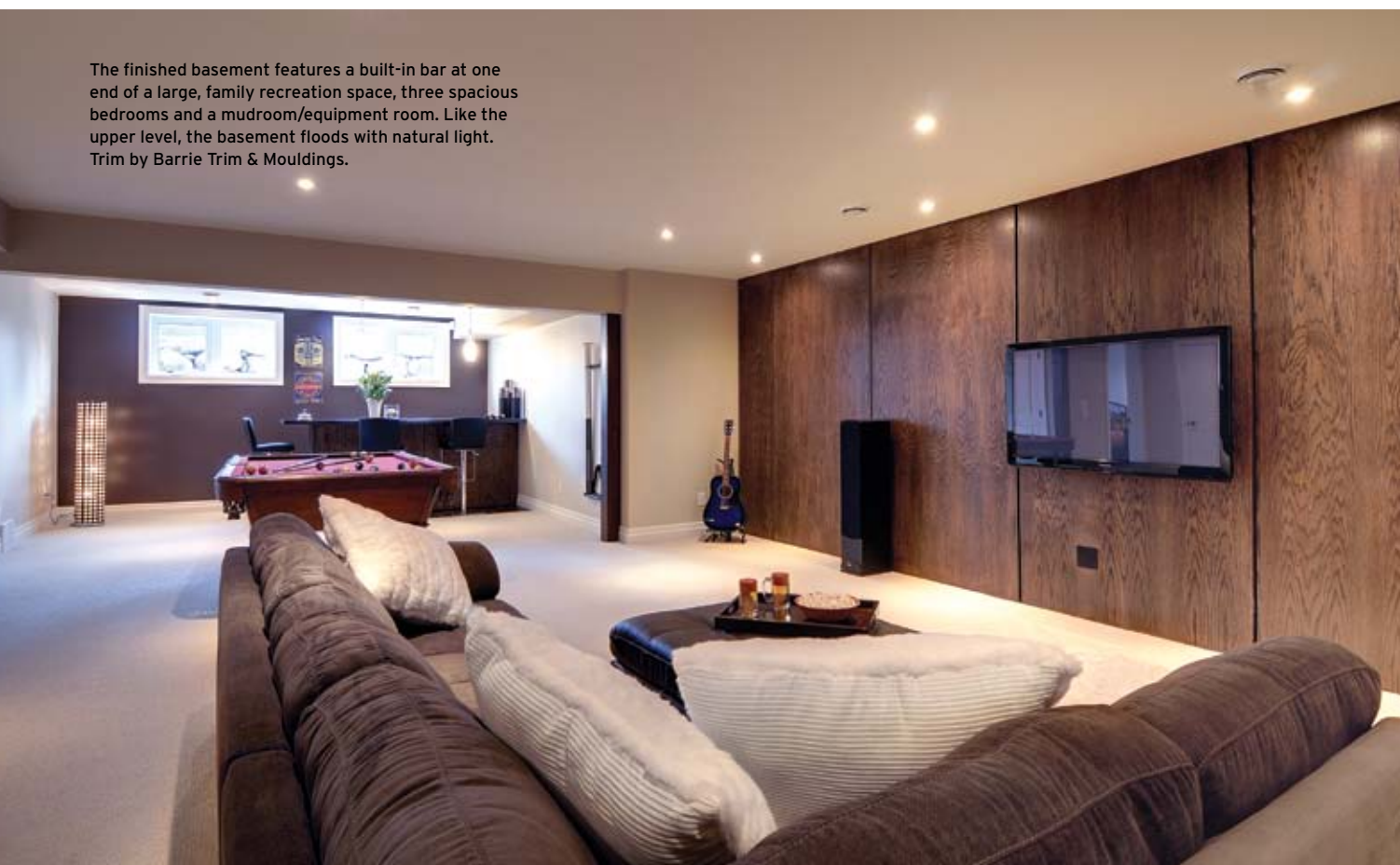


Having built six Viceroy homes over the past four years, Young knows what customers look for in a country home and is prepared to walk owners through the various phases of construction from design to completion. “We can customize Viceroy plans to suit an individual customer’s needs or they can come up with their own drawings and we can make it happen,” he says. “Overall, we offer individual attention with a personal touch.”

Potential customers can see this personal care for themselves with a visit to the firm’s Facebook page where the construction stages of the show home are captured in a series of engaging photos.

Young’s final words are encouraging to anyone considering a custom build of their own. “The Viceroy package is excellent and not as expensive as people might think, when you consider all the Canadian-made materials are of the highest quality and the structure is well-engineered.” **OH**

The finished basement features a built-in bar at one end of a large, family recreation space, three spacious bedrooms and a mudroom/equipment room. Like the upper level, the basement floods with natural light. Trim by Barrie Trim & Mouldings.



DAN NEEDLES ENTERTAINS!

Come for the special Needles wisdom and wit.

Come for his new book.

Come for fun.

Come for the good of it.

Come for nibbles and more.

A fundraiser for My Friend's House, our community shelter for women.

Station on the Green, Creemore
Saturday March 3, 2012 at 7:30 pm.

Cash bar and silent auction.

Tickets \$20 each at the
Curiosity House Book Store & Gallery,
or call (705) 444.2586 ext. 221

Give. Hope.



MY FRIEND'S
HOUSE
www.myfriendshouse.ca

1991 – 2011
Celebrating 20 years
of keeping
families
safe

Find a Jotul Group Dealer Near You:



B & R Hearth & Geothermal
3827 County Rd 124, Nottawa
1.705.445.0077
www.bandr.ca

Chantico Fireplace Gallery
209784 Highway 26, Craigeith
1.705.445.9688
www.chanticofireplaces.com

Hearth & Leisure
506196 Hwy 89, Shelburne
1.519.925.5551
www.hearthandleisure.com

Hearth & Leisure
6 Elora St. South, Clifford
1.519.327.9663
www.hearthandleisure.com



The Jotul F370/GF370 in Wood or Gas

RECREATIONAL LIVING

BY JIM FOX // PHOTOGRAPHY BY SANDY MACKAY

Far Hills Thornbury makes living a full, active life easy with condominium townhomes and condo suites offering a variety of gracious living features.

Choose from one or two-bedroom condos with underground parking or three-bedroom townhomes with single or double-car garages. A variety of floor plans and finishes are available to suit every preference.

An in-ground swimming pool, tennis court and clubhouse complete the active lifestyle at Far Hills. Located at Beaver Street South, the homes are within walking distance of the shops and restaurants of downtown, the Thornbury Marina, the Georgian Trail and the bay. *Continued on page 92*



The open-concept design of this three-bedroom townhome makes it ideal for entertaining friends and spending time with family.

showcase

As **Anita Lauer**, representative of **Chestnut Park Real Estate Ltd.**, leads a tour through the “Primrose” model townhome, she sketches the target demographic for the Far Hills complex. “Our target market is retirees looking for a full-time home with easy access to all the amenities the area has to offer, especially those looking for a more active lifestyle.”

What distinguishes this affordable model is that the rear deck overlooks green space – a wooded area bordering a meandering tributary of the Beaver River, which will never be developed. *Continued on page 94*

The kitchen/dining area features premier grade strip hardwood flooring, upgraded kitchen cabinetry, a large eat-at island with double stainless sink and a rear deck overlooking green space.



Homes Featured in Magazines



- featured in CANADIAN HOUSE & HOME Magazine
- featured in ON THE BAY Magazine
- featured in OUR HOMES Magazine

"I knew that I could tell him what I wanted and I could trust it would be built to look like that. He was a great listener. And our home is absolutely the home of our dreams.

—Jana Temple on the second home recently built for her and her husband by Paragon Carpentry.



PARAGON CARPENTRY
Robin Smith, Builder *A Model of Excellence*
www.homesbyparagoncarpentry.com

OFFERING A COMPLETE BUILDING SERVICE

- GENERAL CONTRACTING
- MAJOR RENOVATIONS • ADDITIONS

Clarksburg 519.599.7913 • Fax: 519.599.7231 • Paragoncarpentry@rogers.com



With suites available in Oiled Bronze, Stainless Steel, Professional and Black or White Floating Glass.... Jenn-Air marries industry-leading performance with elegance for any home décor.

MACDONALD'S COUNTRYWIDE
FURNITURE & APPLIANCES
Since 1953

206518 Hwy 26 E, MEAFORD
519-538-1620 or 800-265-3172
www.macdonaldsfurniture.com

Financing That Fits

STORE HOURS:
Mon. to Sat. 9 am - 5:30 pm
Fri. 9 am - 8:30 pm
Sun. 11 am - 4 pm





Upstairs are three spacious bedrooms, including a large master with a luxurious en suite, which boasts a double vanity, soaker tub and separate shower.

Some of the highlights of the open-concept model include: upgraded kitchen cabinetry, an island with double stainless sink and built-in dishwasher, premier grade strip hardwood flooring, nine-foot main-floor ceilings, convenient ground-floor laundry room, oversized custom casings and baseboards, oil-rubbed hardware fittings throughout and ceramic tub and shower enclosures.

Structurally, the townhome model utilizes maintenance-free materials and the best in energy-saving mechanicals. Lauer is particularly proud of the unit's ICF (Insulated Concrete Form) foundation walls, which ensure a dry, soundproof lower floor. With its roughed-in plumbing and electrics this level can be finished at the owner's discretion to create even more living space in this attractive development. **OH**





HOME & COTTAGE EXPO

Your Regional Home Show

Featuring the best suppliers & contractors in the Southern Georgian Bay area.

- New & Custom Builders
- General Contractors
- Landscape Designers
- Home Decor Specialists
- Garden Centres
- Outdoor Recreation Experts
- Renewable Energy Suppliers & much more!

APRIL 21 & 22



Harry Lumley Bayshore Community Centre
1900 3rd Avenue East, Owen Sound
One hour west of Collingwood on Highway 26
www.homeandcottageexpo.com

\$5 Kids 12 & Under **FREE**
admission




From CONCEPT to LAND ESCAPE



Hardscapes

- Natural stone – flagstone, patios, walkways, driveway banding, facing, coursing, walls, coping
- Armor Rock – walls, gardens
- Asphalt paving
- Commercial services – change of use, catch basin tie-ins, storm water management tie-in to Municipal system

Softscapes

- Garden design and planting
- Sodding – residential and commercial

Guarantee

- Near North guarantees all its workmanship with a minimum 2 year warranty
- Near North does not subcontract out any of its work, so **“One Call Services All”**

More...

- Near North provides free estimates and quotes
- We are fully insured and WSIB certified
- Near North's operating area incorporates the Golden Horseshoe north to Muskoka Cottage Country, Parry Sound and North Bay
- Conveniently located at Hwy 89 & Hwy 400



cell. **416.708.2246** tel. **905.775.2248**
email: info@nearnorthlandscaping.com www.nearnorthlandscaping.com

HORTICULTURAL TRADES ASSOCIATION
landscapeontario.com
 **Green for Life!**

showcase



SOPHISTICATED STYLE

BY JIM FOX // PHOTOGRAPHY BY SANDY MACKAY

Situated at the mouth of the Beaver River in Thornbury, **Eleven Bay Street** offers the best in country townhome living just steps from the waterfront.

Designed for serenity and comfort, the development, managed by **David Eaton** of **Baylyn Construction**, brings it all together with the year-round activities of a diverse and active community and a breathtaking natural setting. The elegant designs of these 13 distinguished residences are complemented by the scenic river and Georgian Bay views that surround the private sanctuary. *Continued on page 98*

The residences at Eleven Bay Street in Thornbury showcase the very best in both exterior and interior finishes. Maintenance-free stone and stucco walls with vinyl clad windows, hickory flooring, seven-inch baseboards, an oak staircase, nine-foot ceilings and a wood-panelled elevator are just a few examples of the superb craftsmanship.



showcase

As the tour of “The Bayview” model home begins, **Michael Kearns**, a representative for **Royal LePage Locations North Realty**, states, “As you can see, the finishes are superb. The builder has spared no expense. In fact, there was a master mason on site for the past four years. The quality is second-to-none.”

Kearns is right. The first thing that strikes the visitor to this exclusive residential townhouse is the high quality of the exterior and interior finishes. Noteworthy features include maintenance-free stone and stucco walls with vinyl clad windows, hickory flooring, seven-inch baseboards, an oak staircase, nine-foot ceilings, accent lighting and a wood-panelled elevator.

“Most places need upgrades,” says Kearns. “Here, the upgrades are standard.”

The quality of construction is matched only by the wonderful views of the river as it flows past the Thornbury Yacht Club into the vast vista of Georgian Bay.

Carey Mudford of **Carey Mudford Interior Design** has done a superb job in showcasing the three floors of this 2,633 sq. ft. unit. Natural shades of soft greys and whites give every living area an elegant, spacious feel.

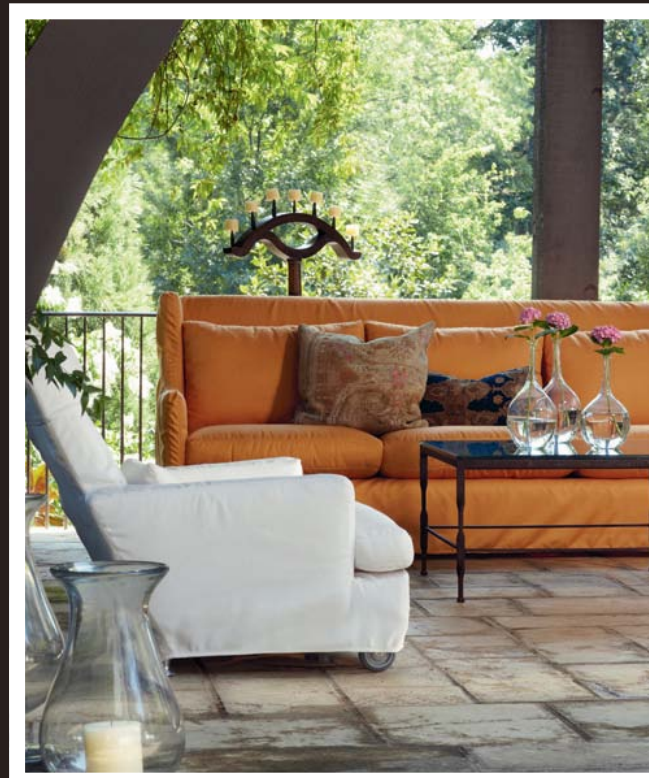
Kearns says, “Quality and location set us apart – especially for retired people. From here you can walk everywhere.” The development is also attracting part-timers who want a beautiful home to spend weekends, holidays and ski season in, without the hassle of regular maintenance. A resident of Thornbury himself, Kearns adds, “The town is a great spot in winter and summer. It’s an active community with great restaurants.” **OH**



The view of the Beaver River from the top-floor master suite is one of the development's major selling points. The private enclave is in a highly desirable location – surrounded by nature, yet just a short walk to Thornbury's best restaurants and shops.

STAPLES • DESIGN GROUP

DESIGN STUDIO & RETAIL STORE



GOING
GOING
GONE!

ON NOW!

floor model sale!

Spring Cleaning!

30 to 50% OFF

Visit us in store today for more information!

470 Huronia Rd. Barrie, ON L4N 6M2
P: 705.721.8585 | F: 705.721.8580
www.staplesdesigngroup.com

Extra Special Cleans for Extra Special Homes.
Environmentally friendly products offered. Fully insured, honest & reliable.

Your wonderful
winter
Collingwood
cleaning crew!



Rachelle Gauvreau
705 443 7790
thecaretakers@rogers.com
www.caretakershousekeeping.ca



CUTTING EDGE

BY JIM FOX // PHOTOGRAPHY BY SANDY MACKAY

Constructed with the contemporary and active family in mind, **Stone Custom Homes**’ model, “The Edge,” is a true gem.

First built in Alta, this luxurious, five-bedroom design with nearly 5,000 sq. ft. of living space will also be available in Windrose Valley, a unique development with enormous lots at the base of Osler Bluff ski hills.

Inside the home, a singular stone and metal fireplace anchors the great room with a 25-foot ceiling and great views to the mountain. The adjacent open kitchen area allows even more room for social gatherings.

This spacious home possesses several unique features, including double-glazed windows (that reduce noise, conserve energy and save money), reclaimed hardwood floors and a mudroom with laundry room access. The sprawling, ground-floor master bedroom is augmented by guest and multi-use suites on the second floor, and with a bathroom for every family member, this home is just as functional as it is beautiful. *Continued on page 102*



The Edge model by Stone Custom Homes combines rustic and modern features, such as stone and metal for the great room’s fireplace, for a unique look. With incredible views to the mountain, and a huge, high-end kitchen sporting loads of workspace, the open-concept living space is an entertainer’s dream come true. Macdonald’s Countrywide Furniture & Appliances provided furniture, and artwork throughout the home is from the Loft Gallery in Clarksburg.



showcase



A feature wall of backlit onyx and stone is one of the many eye-catching features that makes this design stand out. Another is vertical awnings that run both horizontally and vertically throughout the home, and also frame the bed in the main-floor master suite. The stairs were supplied by Barrie Trim & Mouldings.



SHARP
IMAGE
GROUP

705.445.7899

www.sharpimagegroup.com

Certified Landscape Designers

"Landscapes Inspired by Design"

a proud member of
Landscape Ontario

*A little temptation ...
from those who spend their lives trying to avoid it.*



Furniture to match your look and needs.
Let us design and build for your home.

Country Charm
Mennonite Furniture

17 George St, Caledon 519-927-1789
Hwy 6 & 10, Owen Sound 519-376-4434
www.ccharm.com

Bedrooms Buffets & Hutches Chairs & Rockers Tables Home Office

Stone's model combines clean lines with a unique mix of rustic and modern influences, such as minimalist trim and a signature feature wall of backlit onyx and stone in the entranceway that sets a bold, yet relaxing tone for the home.

Aside from "The Edge," Stone Custom Homes offers several other designs in and out of Windrose Valley, and has exclusive local rights to Lindal Cedar Homes and Turkel Design homes.

Gordon Stone M.Arch, illustrates how his modern designs marry traditional chalet influences with contemporary trends that allow for lots of open space inside and plenty of natural light from the outside. "Windrose Valley offers a fantastic array of possibilities for both structure and design style," he says. "The proximity to ski, golf, equestrian and town facilities brings a unique flavour to the neighbourhood, and the large lot sizes offer limitless view potential, giving us the opportunity to design homes tailored to the unique desires of each buyer."

For people who aren't keen on going through the process of custom building, Stone can put together packages of various models. "Customers can adjust and change the design while maintaining the basic structure and price," Stone explains. "It's a hybrid offering to custom build, and unique to our company – the entire process takes 10 to 12 months."

Holly Stone, who handles realty and marketing for the business, adds that "the format allows homeowners to be as involved or uninvolved as they like. It also gives them plenty of ideas for finishes and provides a strong price structure and construction timeline." **OH**



PR Antique Products

- Flooring • Timberframe • Beams • Stairways
- Treads • Mouldings • Cabinets • Harvest Tables
- (all from vintage lumber)

- Hemlock
- Pine
- Elm
- Ash
- Other species available

Showroom now open by appointment

Timeless Beauty

Eco Friendly

519.538.4070 www.prantiqueproducts.com



FULL SERVICE
Interior Design

VILLAGEBUILDERS
705.466.3202 • www.villagebuilders.ca