

showcase



# CUTTING-EDGE *style* AT THE MOUNTAIN

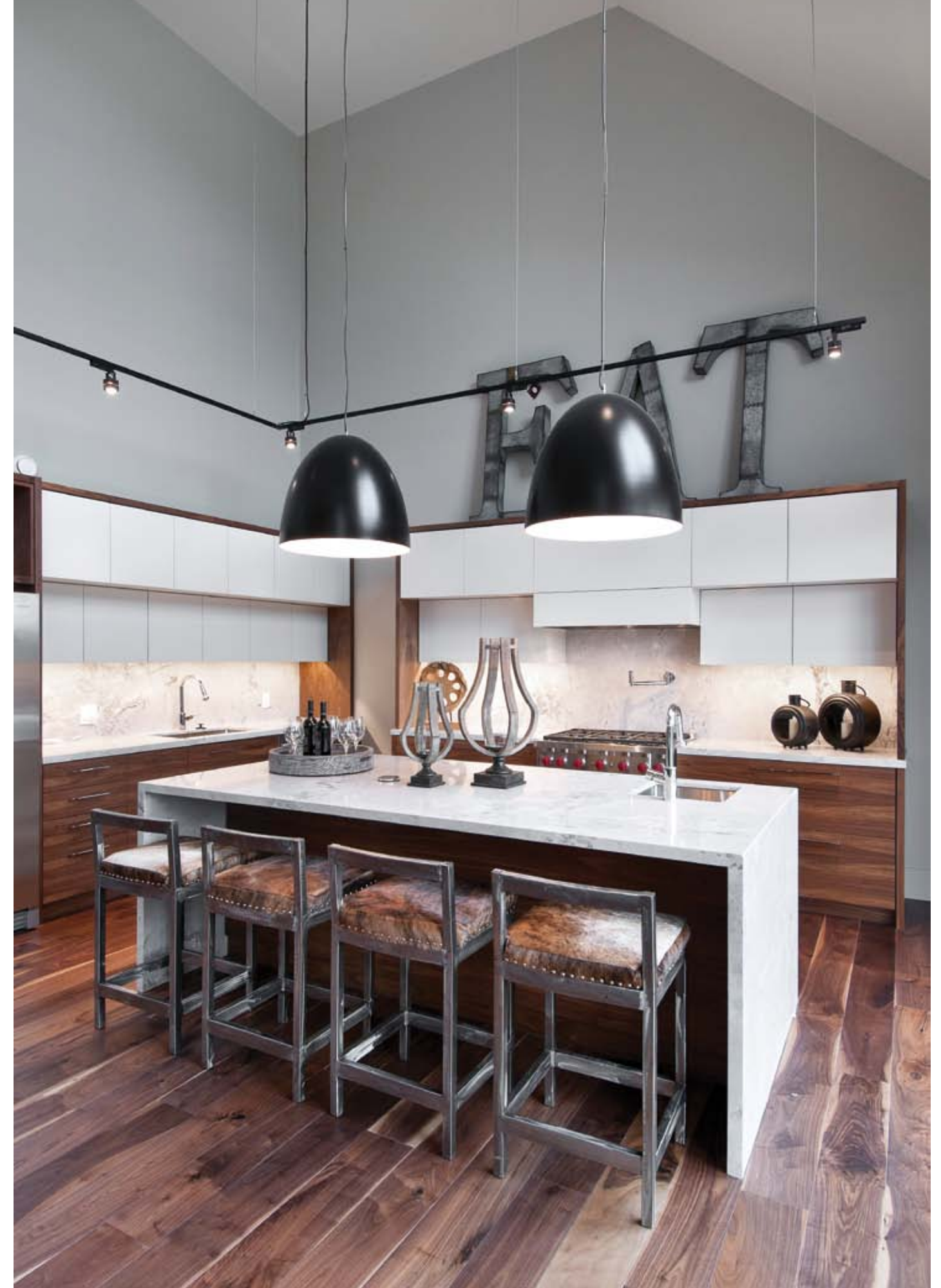
BY JULIE SIMMONDS  
PHOTOGRAPHY BY SANDY MACKAY

Snuggled between Alpine Ski Club and a forested ravine along Arrowhead Road at Blue Mountain, sits a newly built modern mountain home, ready and waiting for its new owners. **SOLCORP Developments** is now offering the first home in their new **Arrowhead Collection**.

Designed by **Abbott Design Ltd.**, using a fresh, fashion-forward approach, the home features 4,300 sq. ft. of living space, including a stunning glass entryway, vast 22-foot vaulted ceilings and floor-to-ceiling windows (in both the front and back of the home). Built to entertain family and friends, with six bedrooms, five baths, a large games/media room, master retreat with luxury en suite, and finished basement, the home is intimate enough to bring the family together, yet large enough to host a big gathering.

"I always wanted to do something unique, a little more cutting edge, more upfront, rather than the same old chalet look," says company owner Anne Solomon. "I wanted to bring the feel of luxury and I also wanted it to be a bit timeless. This area seems to be everyone's family meeting place, and people want to live up here. I think they want big entertaining space."

*Continued on page 80*





## showcase



Making space to “entertain big” is exactly what Anne created in the massive chef’s kitchen, finished with quartz counters, two oversized islands and custom walnut cabinetry and flooring. “People can gather in the kitchen area; it’s one big fluid space,” states Anne. Both the dining and living areas flow from the kitchen and feature a natural wood-burning limestone fireplace and furniture from **Habitat Interiors**.

Owners can take advantage of the natural daylight that floods the home, and then set timers to light the house at night. Everything in this home is automated and wired to be remote controlled with a smartphone, making this modern space functional for progressive homeowners. **OH**



*Naturally Inspired Serenity*

Customized Outdoor Living Design  
and Project Management

**VOGEL**  
LANDSCAPE DESIGN  
AND CONSULTING GROUP LTD.

705.445.9000  
www.VogelLandscapeGroup.com

*Ashton's*

We've expanded our portfolio!

in-home consultations • blinds • draperies • shutters • colour consults • upholstery • custom bedding

 **ECLIPSE**  
SHUTTERS

King's Court, Thornbury, ON 519.599.7695 www.ashtonsblinds.com

**NORTHLAND**  
E C O - H O M E S  
MODERN SUSTAINABLE CUSTOM HOMES by Benjamin Gabriel

- architectural
- millwork
- interior design

 demo model shown  
currently for sale  
please call for info

northland-ecohomes.ca • 705.994.2224



*Paperwhite*  
FLOWERS

FLORAL AND EVENT DESIGN  
CUSTOM FRAMING

519.599.6606  
15 BRUCE STREET SOUTH  
THORNBURY, ON N0H 2P0  
WWW.PAPERWHITEFLOWERS.CA



showcase



# comfy COLLINGWOOD CONDOS

BY JULIE SIMMONDS  
PHOTOGRAPHY BY SANDY MACKAY

Warm and sophisticated, opulent and comfortable, **Dwell@Creekside** is a mid-rise condominium complex at the entrance to the sought-after **Creekside** community in Collingwood. The condo complex, a development by **Devonleigh Homes Inc.**, makes a beautiful addition to the Creekside neighbourhood, offering 35 one-to-three-bedroom living spaces, with elegant stone and brick exteriors.

"We had people moving in mid-December," says Jim Funston, Director of Sales and Marketing for Devonleigh Homes. Several condo units presold over the past year when the project began. The remainder of the suites come with a 90-day closing, and will be customized to the buyer's specifications as they are sold."

With layouts ranging from 706 to 1,233 sq. ft., each condominium unit is finished with designer kitchens, rounded corner walls, luxurious tub surrounds and a choice of broadloom or tile flooring. "On the ground floor, we have 10-foot ceilings, giving the space a more open feel. Second and third floors have nine-foot ceilings," states Jim. *Continued on page 84*





## showcase



Conveniently situated close to downtown Collingwood's shops and restaurants, with easy access to Blue Mountain's summer and winter wonderland, Dwell makes an ideal retreat for weekenders and retirees alike.

"Right now, the majority of people coming in are wanting to downsize or retire, and want something where they can lock the key and go down to Florida, or travel for the winter," says Jim. Hoping to also attract weekenders, he adds, "You can lock the door and go back to the city. It's all secure and you don't have to worry about it."

Three model suites, beautifully styled and tastefully decorated, are available for public viewing, including the Allium, an 870 sq. ft. two-bedroom model, the Linden, a 924 sq. ft., two-bedroom suite, and the 1,233 sq. ft. Azalea, with three bedrooms. **OH**

Flooring comfortable enough for your best friend.

Comfortable price point.  
Comfortable experience.  
Comfortably stress-free.

### Specialty Woods

*All wood from contented trees.*



COLLINGWOOD | 705.730.7623  
specialty\_woods@yahoo.ca | specialtywoods.org



## Homes Featured in Magazines



- featured in CANADIAN HOUSE & HOME Magazine
- featured in ON THE BAY Magazine
- featured in OUR HOMES Magazine

"I knew that I could tell him what I wanted and I could trust it would be built to look like that. He was a great listener. And our home is absolutely the home of our dreams.

*—Jana Temple on the second home recently built for her and her husband by Paragon Carpentry.*



Robin Smith, Builder *A Model of Excellence*  
[www.homesbyparagoncarpentry.com](http://www.homesbyparagoncarpentry.com)

OFFERING A COMPLETE BUILDING SERVICE

- GENERAL CONTRACTING
- MAJOR RENOVATIONS • ADDITIONS



Clarksburg • 519.599.7913 • [www.paragoncarpentry.ca](http://www.paragoncarpentry.ca)



# ENVIRONMENTALLY FRIENDLY *living* IN THE MEADOWS

BY JULIE SIMMONDS  
PHOTOGRAPHY BY SANDY MACKAY

Recently named Home Builder of the Year, in 2013, at the Ontario Home Builders' Association Annual Conference in Niagara, **Reid's Heritage Homes** is wrapping up its final few home sales in Collingwood's **Georgian Meadows** development, a community that's been growing steadily over the past 12 years.

The development consists of approximately 420 single-family homes on 36, 40 and 50-foot lots. "The mix, from a purchaser's perspective," says Stacey Thomas, Sales Consultant, "ranges from active retired families to a few single people living in the community. It's been very successful."

The Elgin, a two-bedroom, two-bath Craftsman-style 1,463 sq. ft. bungalow is situated on a corner lot along Alyssa Drive. The home features luxuries such as a covered porch, exquisite main-floor tile, a master en suite, as well as three Whirlpool appliances, but the true luxury in this home comes from what you don't see.

Known for its ENERGY STAR® homes, a standard in all abodes within the development, Reid's Heritage Homes takes pride in constructing high-quality homes that are both easy on the pocketbook and the environment.



To obtain an ENERGY STAR® rating, Reid's homes include items such as high-efficiency, forced-air gas heating, a heat recovery ventilator (HRV) system, a separate media air filter installed in the ductwork to provide whole-home filtration, sealed main ducts in the basement, and a main trunk duct in the basement, made by using duct board insulated material. All windows are maintenance-free, high-efficiency, vinyl clad, and Low E argon gas-filled. The homes also feature a drain water heat recovery system that has been installed in the waste stack in the basement. All these items work together to help homeowners run a 60 percent more energy-efficient household.

"We've been ahead of the game all along," says Stacey. "We started building ENERGY STAR®-style homes before ENERGY STAR® was popular, and from there we're just getting into newer and better things." **OH**