

A once vintage chalet received an addition and a total face-lift, inside and out. In this room, the fireplace was redone and all the windows were replaced. Owner Chris Morgis loved the location and decided a makeover was the way to go. **TOP RIGHT:** The kitchen is warm and inviting and wired for sound.



before



PHOTOGRAPHY BY SANDY MACKAY

# A RENOVATION *well worth it*



Sometimes it just makes sense to renovate.

Vintage chalets in prime locations dot the area around – many in need of a makeover.

The vacation home Chris Morgis and his family enjoy today is a perfect example of what can be done to a chalet built long ago.

Morgis bought the much-loved pre-fabricated home back in the early 90s, when Blue Mountain wasn't quite as popular as it is today.

“At the time, it was five years old and built for weekend use only,” the Toronto developer says. “There was no garage, no storage, no basement and just enough room for our young family, but the location was to die for and the view even better.” *Continued on page 109*





This fabulous recreation room was added to the back of the original chalet. **LEFT:** Brad Abbott's design included a new loft overlooking the rec room. **BOTTOM LEFT:** The games room includes a two-storey stone fireplace and lots of comfortable seating. **BOTTOM RIGHT:** The bunkie is upstairs in the loft and gives the kids a place to entertain their friends.



At the time of purchase, his daughter was three and his son just a year old. It was just a matter of time before they outgrew the chalet. That time came in 2008. Morgis decided it was time to renovate and hired **Brad Abbott of W.B. Abbott Design**, whose passion is designing quality single-family homes.

"Our place was always the drop-in centre," Morgis says happily. So I sat down with Brad to map out how to make it better, bigger and with two of everything so as to keep the boys from bothering the girls.

Abbott's design incorporated a new garage, mudroom and storage, which included a sub-basement with a utility room, plus an entertainment space for the whole family. He also designed a facelift for the exterior.

"We added 2,100 sq. ft., almost doubling the space," says Abbott.

The "playroom" is the real showpiece. It was added over the master bedroom and is one large open space, which includes a home theatre and a new stone fireplace. It has a pool table and an elaborate built-in bar. The home is fully automated – lighting, shades and audio video – thanks to **Red Brick Property Solutions**.

"During the design, we suggested that he add a loft on top of the roof of

the original house that would have an overview of this new games room," Abbott says. "It's very unique and works with the roof lines."

The home now has a place for the boys and a place for the girls.

All the ceilings were redone with false beam work and pine, which is the predominant interior finish. The old windows, which were triangular and trapezoid, were replaced with square Loewen Windows with unique copper cladding on the outside. A post-and-beam portico over the entrance and stone steps finish off the true mountain-chalet architecture.

"Brad was perfect because he understood the Alpine style and trends of that marketplace," Morgis says. "He also has an eye for real post-and-beam fir work."

**Wilson Project Management Inc.** (WPMI) was the contractor.

"I hired only the best people," says Morgis. "From Richard Wilson to Brad Abbott and all the best trades."

"In the end," he says, "we could have built cheaper on lots we own in Alta, but I loved this property and stayed with it. It is my favourite place to go, still to this day." **OH**



# NEW CHALET

PHOTOGRAPHY BY SANDY MACKAY

## Style



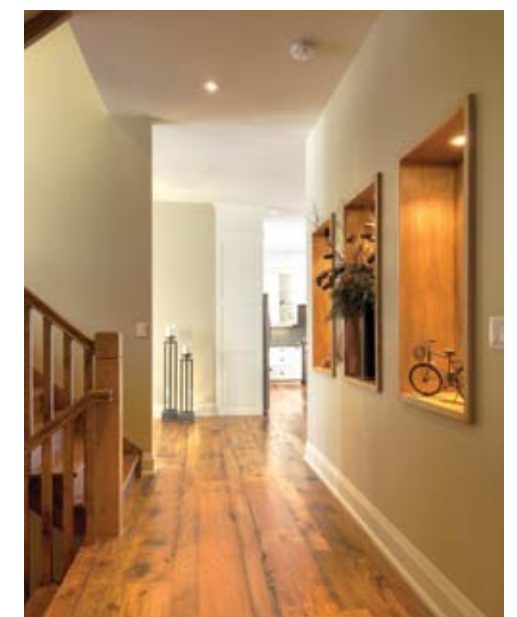
Fine homes on estate lots are a rarity these days, especially those located near the slopes at Blue Mountain and close to schools, shopping and gourmet restaurants.

If nature, four-season activities and a beautiful, sustainable home are what you crave, look no further than **Windrose Valley Estates** and this amazing home designed by **Stone Custom Homes**. It offers the very best in chalet living.

Gordon Stone's latest design is one of four he's building at Windrose, located at the corner of Osler Bluff Road and Sixth Street.

All home sites at Windrose are a minimum of one acre with views of the slopes, walking trails, ponds and tennis courts. *Continued on page 112*

The spacious, open-concept design includes a dining room close to both the contemporary kitchen and the inviting living room. The accent wall is a Gordon Stone trademark. **CLOCKWISE FROM TOP LEFT:** The large main entrance opens to the great room. Custom kitchen cabinets provide lots of storage. Windows flood the kitchen with light. Display coves can be found on the other side of the accent wall. A quaint powder room with a rustic vanity.





# home tour

This home offers just over 3,800 sq. ft. above grade and has an architecturally clean approach with simple lines and intelligent building practices.

Traditional offerings are updated in this lovely home, giving it a fresh new take on chalet living. Reclaimed hardwood flooring from sustainable sources, innovative finish details and smart home technology create an environment geared towards enjoyment.

The great room boasts 25-foot ceilings, a floor-to-ceiling stonework fireplace and dramatic two-storey windows showcasing the escarpment in all its glory in every season. There is a main floor master with a walkout to the 1.1 acre lot, and a luxurious en suite boasting radiant heated floors, three types of marble and a soaking tub.

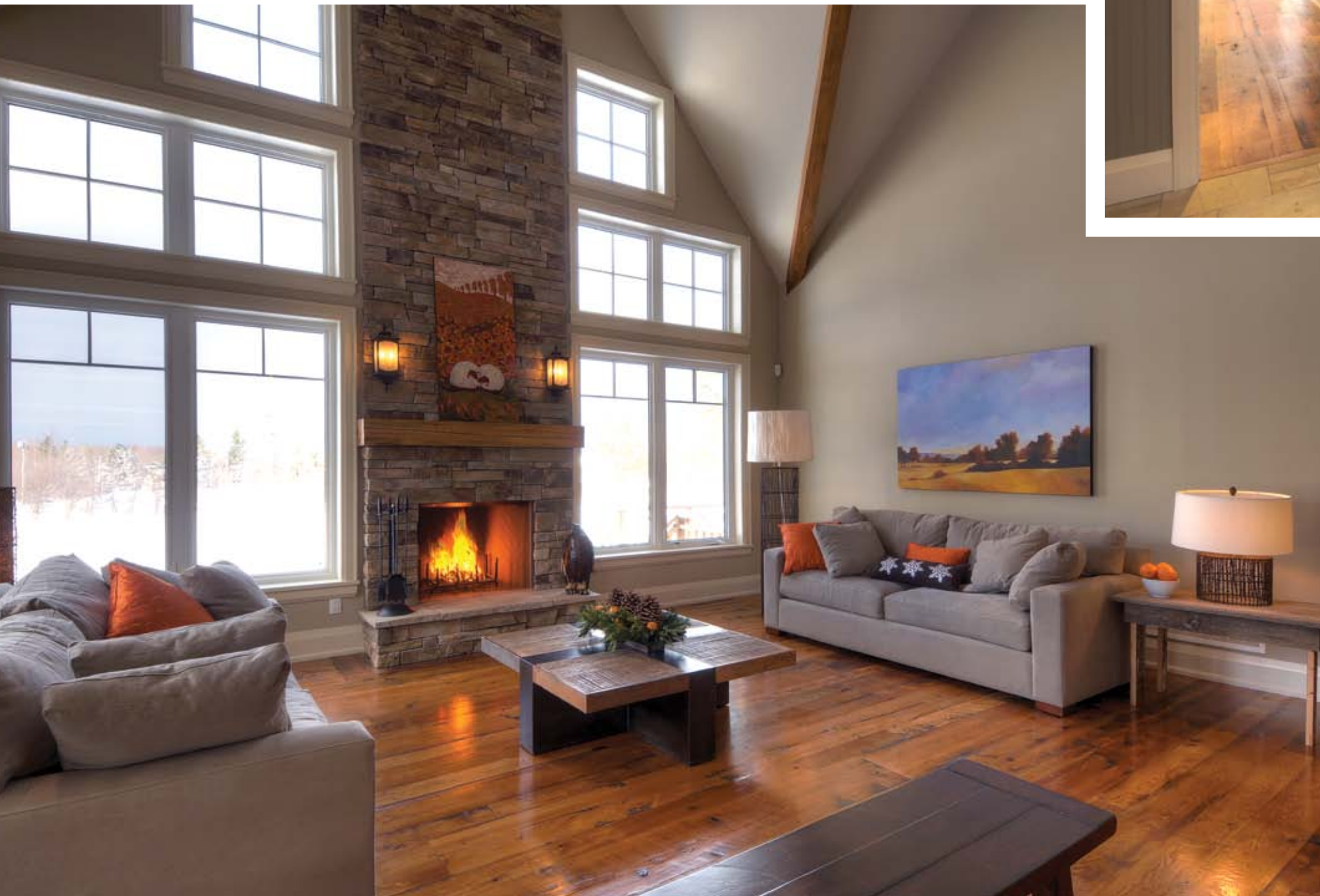
The unique kitchen design includes windows on two sides, taking advantage of both the morning and afternoon sun. This custom layout has two prep areas and a huge island for entertaining.

The gear room off the three-car garage also has radiant heated floors, custom stone work and all the space you need for everyone's equipment.

Upstairs, you'll discover a loft area, a generous guest room with en suite, two more bedrooms with shared bath and a wonderful 400 sq. ft. media room with fireplace.

With lot sizes ranging from 1.08 to 2.24 acres, Stone Custom Homes has offerings from \$879,000 to \$2,225,000 available at Windrose.

Original paintings courtesy of **Loft Gallery**, Clarksburg. Furnishings and accessories courtesy of **Dovetail Interiors**, Nottawa. **OH**



**ABOVE:** The gear room has access to the garage.  
**FAR LEFT:** The living room has a wall of windows, bringing the outside in.  
**LEFT:** The master bathroom has a fantastic vessel tub and a separate glass shower.





PHOTOGRAPHY BY SANDY MACKAY

The 2,245 sq. ft. townhouse has three bedrooms and an open-concept main-floor living space. **TOP RIGHT:** The beautiful stone exterior of the model townhome, located just steps from the bay in Thornbury. **BOTTOM RIGHT:** The kitchen has creamy cabinetry with antique brown granite counters. There is plenty of storage and counterspace. **BOTTOM LEFT:** Each townhouse has its own private elevator.



# exclusive COUNTRY TOWNHOME LIVING

The developer of Eleven Bay Street, Leonard Godfrey of Harbour Vista Inc., has easily captured the essence of this incredible townhome destination. The marketing material says it's where "quaint meets sophisticated and leisure meets activity in the beautiful environs of Thornbury." How appropriate. *Continued on page 116*





## home tour



### SOURCE GUIDE

Baylyn Construction Ltd., CMID (Toronto), Grey-Bruce Construction Ltd., HCCLTD, Thornbury Home Hardware, Van Dolder's Custom Exteriors, Competitive Roofing, Gorilla Gutters, Bear Electric, Air Star Mechanical, MBM Stone Works Masonry, D+R Plastering, Chantico Fireplace Gallery, Steve Ryan Tiling.

Anyone who lives in or near Thornbury knows Eleven Bay Street is a rare gem in the middle of a magical four-season playground, and it's an easy drive from the big city.

Eleven Bay is an exclusive enclave of 13 stately, elegant townhomes located at the mouth of the Beaver River. Skiing, golfing, beaches and boating are all within easy reach, as are boutiques and wonderful restaurants.

The development is a perfect landing for retirees (each townhome has its own elegant elevator) or anyone who appreciates the finer things in life.

The townhomes range in size from 2,245 sq. ft. to 3,759 sq. ft. and in price from \$650,000 to \$1.25 million.

Godfrey fell in love with the site just steps from the water several years ago when another piece of land he was interested in wouldn't work. "I found out about this land from a town planner who suggested I look at it,"

Godfrey says. "I flipped over it. It was a gorgeous site and an outstanding place to live."

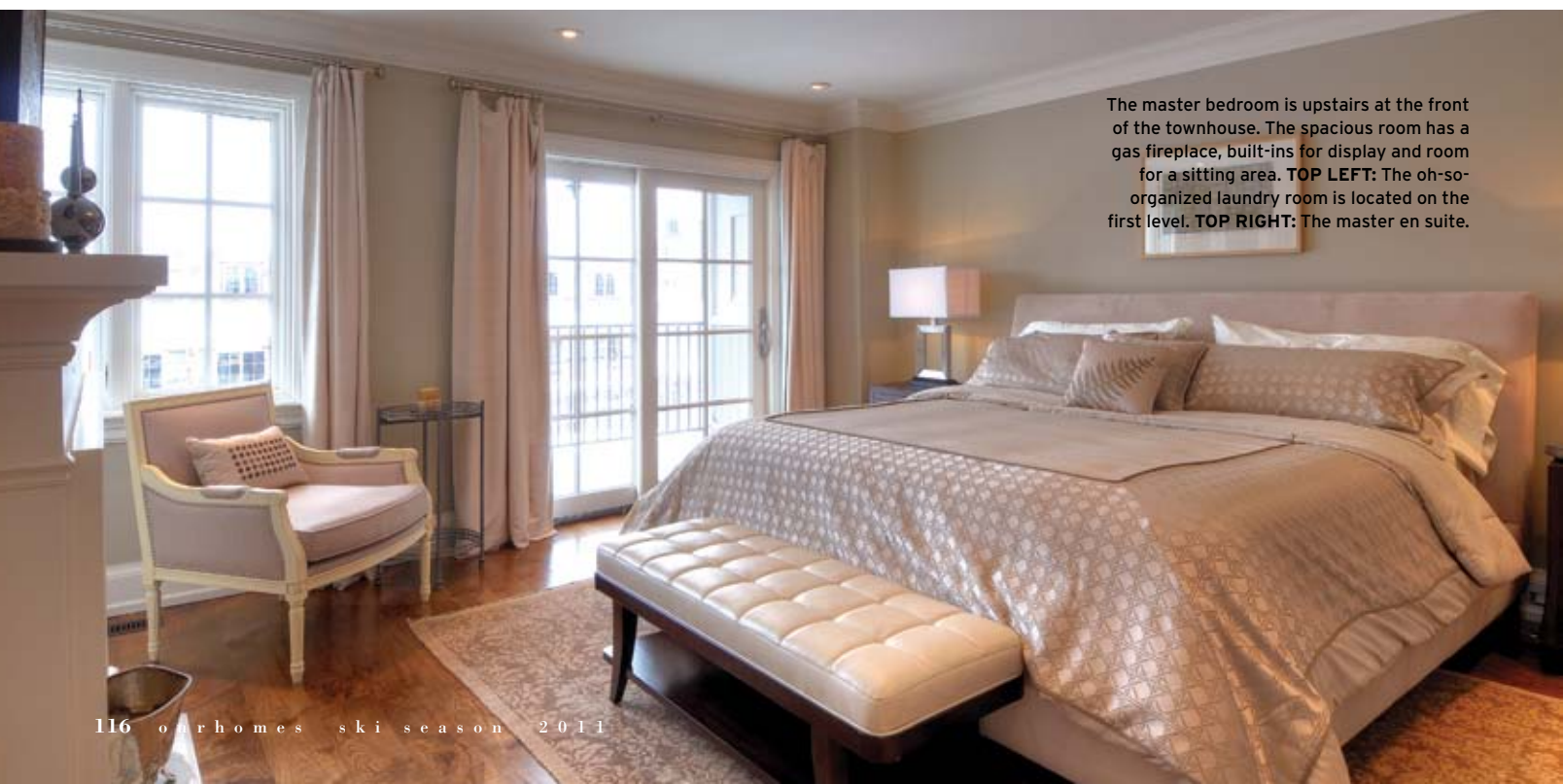
He hired the exceptional team of Lorne Rose Architect and Abacus Architects to design the project.

Dave Eaton of Baylyn Construction is project manager.

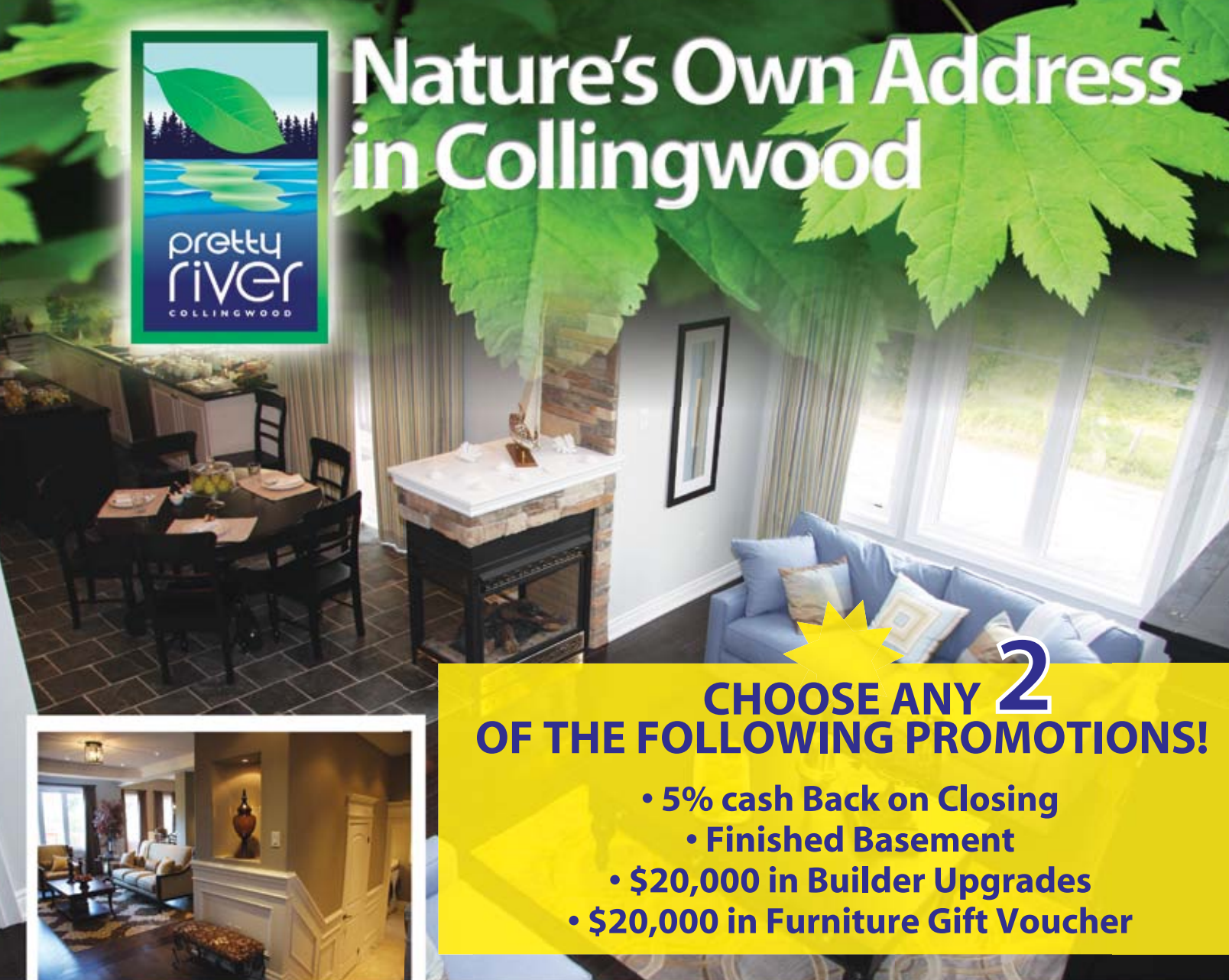
The model home featured on these pages is open for viewing while two others will be completed very soon. Each home is custom designed to suit the client.

Godfrey is excited about the year ahead and believes the climate has changed in the real estate sector across the province.

"I expect 2011 to be a very, very dynamic year for real estate all over Ontario," he says with exuberance, adding "I hope to sell a number of these townhomes so we can keep people on the job and steadily employed." **OH**



The master bedroom is upstairs at the front of the townhouse. The spacious room has a gas fireplace, built-ins for display and room for a sitting area. **TOP LEFT:** The oh-so-organized laundry room is located on the first level. **TOP RIGHT:** The master en suite.



## CHOOSE ANY 2 OF THE FOLLOWING PROMOTIONS!

- 5% cash Back on Closing
- Finished Basement
- \$20,000 in Builder Upgrades
- \$20,000 in Furniture Gift Voucher



From winter sports to the golden beaches of Georgian Bay, Collingwood offers a rich fusion of heritage and culture, year-round festivals and great family living. Located in this breathtaking setting, Pretty River is a new community adorned with beautiful designs and exquisite finishes. A rustic trail runs behind the site, perfect for walking, jogging or just enjoying nature.

**SINGLES & SEMIS STARTING FROM THE LOW \$200's**

1-888-257-1999 • 705-293-3311

**prettyriver.net**

Visit Our 3 Elegantly Finished Model Homes!



Prices & specifications subject to change without notice. Renderings are artist's concept. E.&O.E.

