



RIGHT ON TIME

STORY **ADRIENNE BROWN**
PHOTOGRAPHY **JASON HARTOG**



Sometimes, all the pieces of the puzzle just fall into place – even if you didn’t know there was anything out of place to begin with. That’s more or less what happened when Cathy Hanley discovered an undeveloped property up for grabs south of Cambridge. She knew she needed to build a new family home there.

LEFT: Clocks are a running theme through this new build. The owner is always on the hunt for interesting new pieces. **RIGHT:** The open-concept rustic kitchen and eating area look out over the expansive backyard. **BELOW:** Ken Sommer from Shirecrest Homes, who Cathy Hanley says went “above and beyond” in pulling her vision together.



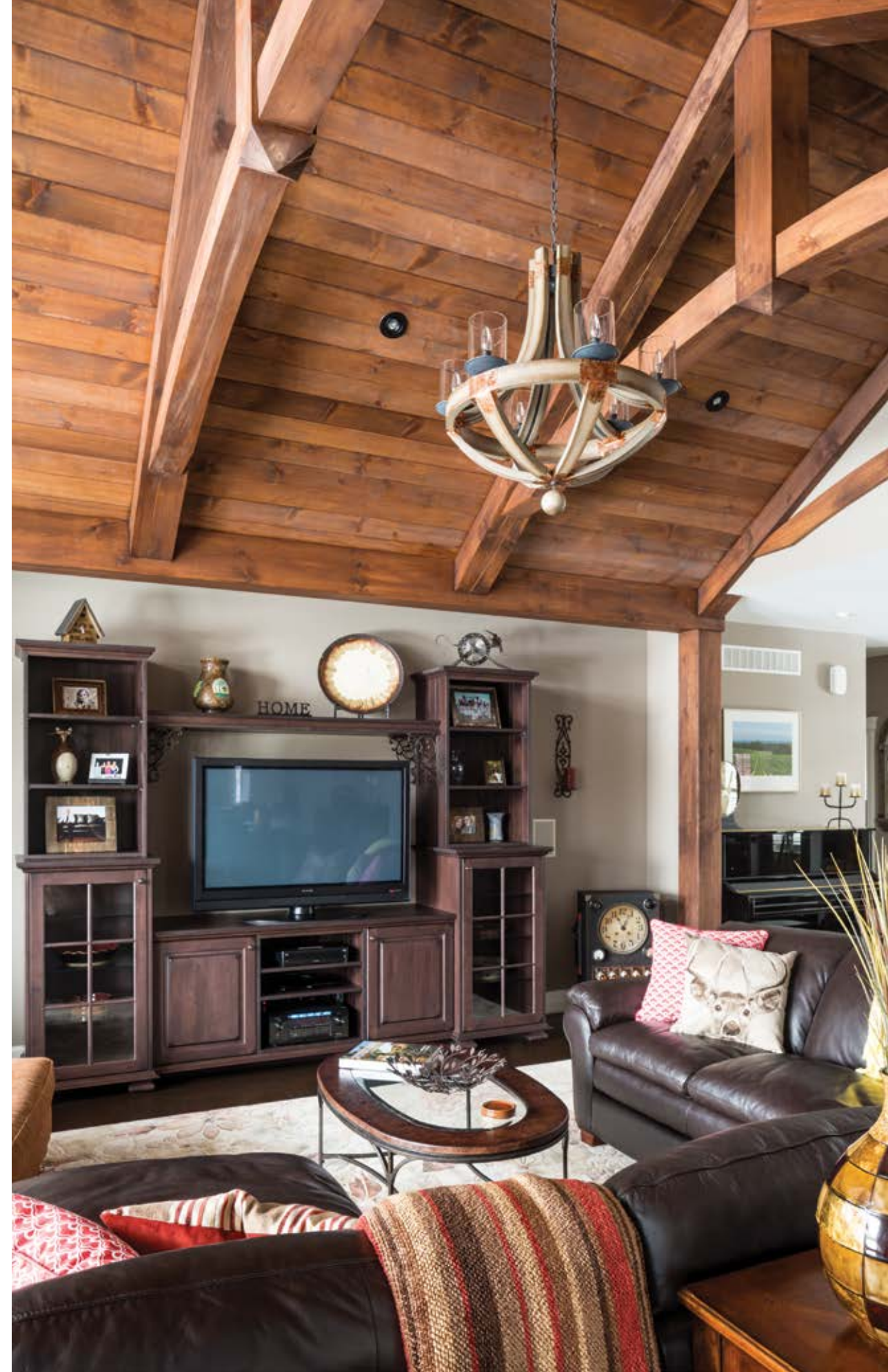
However, what she had in mind was definitely not a cookie-cutter home, so she called a builder she knows has no interest in building anything of the sort. She called **Ken Sommer** from **Shirecrest Homes Inc.** to help make her vision a reality.

Sommer had built the Hanleys’ previous home, where they were very happy, but when Hanley saw this six-acre lot online, she fell in love. “I wanted to do anything to be out here,” she says. “It’s like having a cottage but not too far from work.”

Whereas their previous home was a two-storey dwelling in a subdivision with the whole family upstairs on one floor, their new home is quite the opposite.

The Hanleys opted for a main-floor master suite and spare bedroom, then gave their teenagers the run of the lower level. This way, their kids have their space for entertaining and hanging out. They often

Continued on page 22



have friends over, and they love having an area of their own, including a wet bar so they can keep cold drinks and snacks at hand and an attached fitness room.

“This is the first home that we have designed and built that has many different vantage points throughout the entire basement,” says Sommer. “The lower level incorporates a full walkout at one end and a lookout at the other.”

It’s the main level that’s the showstopper, though. Beautiful timber ceilings in the great room are the first thing you notice on entry, making that space the heart of the home. “You come home from work and really feel like you’re getting away from everything,” says Hanley.

That was the main goal. “We really wanted this home to blend in with the landscape of the vast six-acre property,” says Sommer. “And we wanted to create a continuous feeling from the moment you turn onto the driveway, through the interior and carrying through the covered deck at the rear.”

For that natural look, Sommer used Cinco Brick and Lafitt Stone from **Patene Building Supplies Ltd.** for the masonry.

As for the style, Hanley saw a photo of a design she liked online and

shared it with Sommer. That was their starting point, and the home came together from there.

The Hanleys already had lots of wood furniture and, playing off the country retreat idea, Sommer recommended a way to incorporate exposed wood into the great room. He also built a double-sided fireplace the family can enjoy both inside and out, when the weather allows, separating the interior and exterior living spaces. It also acts as a visual divider where the great room transitions to the kitchen, which features a large pantry, an eat-in breakfast nook and lots of storage space. **CW Kitchens Inc.** installed the beautiful kitchen cabinetry and counters.

All of the timberwork in the home is local timber, which Sommer purchased from a nearby wood mill. His team of craftsmen completed all of the shaping, planning and fitting in-house. “What we began with were rough-sawn logs straight out of the mill,” he says, “and we ended up with the true focal point of the home.” It adds more than immediate visual interest, too: “the smell of fresh cut timber is a beautiful thing,” laughs Sommer. “And it is really satisfying to see a product develop from beginning to end.”

Continued on page 24

LEFT: This double-sided fireplace can be enjoyed from the great room and dining space inside and from the back porch outside.

TOP LEFT: Behind the kitchen, Sommer built a beautiful mudroom connecting the garage to the main level of the home. **TOP RIGHT:** At the front of the home, french doors open into a study. **ABOVE:** The living space in the walk-out basement is a little more casual than the main level but no less beautiful. **RIGHT:**

The pièce de résistance in the home, the soaring ceiling with custom timbers, is visible from the foyer and sets the tone for the rustic, lodge-like living space.



LEFT: Hanley carried the same rustic colour scheme into the main-floor master. **ABOVE:** The master en suite includes similar cabinetry and woodwork as other living spaces in the home.

Engineered antique five-inch Maple Del Rio flooring from **Sarmazian Bros. Ltd.** (who also supplied the home's carpeting) and installed by **Manor House Flooring Inc.** completes the cabin-like look in a modern way.

Vera Dougley of **Dougley Decorating Solutions** assisted with some of the décor. Hanley selected a flat Benjamin Moore shade, Ashley Grey (HC87) for her main living spaces and had **Dan Turner Painting & Décor** come in to paint. The colour lets all the other elements in the home shine, especially Hanley's collection of clocks, which are spread throughout the whole home.

"They feel like artwork to me," she says. Each one is unique and represents a place she has visited, a special occasion or a special person. She says she has always gravitated towards clocks. "My collection represents memories of things I've done."

Her light fixtures from **The Lighting Shoppe** (and installed by **Fliet Electric Ltd.**) are just as carefully selected for each space – as is

every detail in the construction of the home. Hanley knew exactly what she wanted and says Sommer was fabulous to work with on the project. He brought her vision to fruition.

"I wanted to have the great room and kitchen attached, plus lots of windows looking out to the beautiful yard," says Hanley. Her other must-haves included a front porch overlooking a huge willow tree and pond, a spa-like master bath, spare room for guests, a space for her teens to entertain and lots of parking.

In winter, Hanley and her family can walk right out their front door to their private skating rink. Because their home is out of the way, they get wildlife just like they would at a cottage farther north. They get all types of visitors, including deer and wild turkeys, up close to their home.

"It's very peaceful out here, and it gets you away from the business of everyday life," says Hanley. "You really feel like you're up north but everything is so close by." **OH**



FAR LEFT: With big windows and bright, fun paint, it's hard to believe this bedroom is in the basement. **LEFT:** The functional main-floor laundry space is lighter than most other rooms but still fits the cottage-like scheme.

The Region's Largest Showroom

The Lighting Shoppe

Thousands of fixtures on Display and in Stock

5 1 9 . 6 2 2 . 2 2 2 3
529 Hespeler Rd. (at Sheldon) Cambridge
1199 Wharncliffe Rd S London 519.668.0178

DISCOVER WHERE **TIMBER TELLS A STORY**

TIMBER BARN

Custom Design Showroom & Unique Home Decor

KITCHENS | BATHROOMS | CUSTOM FURNITURE
DOORS | STAIRS | FLOORING & MORE

TIMBERBARN.CA
8 Spring Street, St. Jacobs, Ontario
519.669.3245
info@timberbarn.ca

ECLIPSE™
SHUTTERS

KEEP CALM

and take six MONTHS to pay. o.a.c.

Blinds Are Us

Gallery Showroom

299 Manitou Dr., Kitchener
(between Homer Watson & Wabanaki)

IN SUPPORT OF **SickKids** FOUNDATION  Made in Canada

519.893.8687

WWW.BLINDSAREUS.CA