

SUMMER 2016

STYLE ■ COMFORT ■ IDEAS ■ REAL ESTATE

ourhomes

W I N D S O R & E S S E X C O U N T Y

brehtaking BACKYARD OASIS

PLANTERS with
PRESENCE

LA DOLCE VITA
THE GOOD LIFE ITALIAN STYLE

LOCAL
WINES
FOR EVERY
OCCASION

RICHARD PURSEL'S
DESIGN *ideas*

TIPS TO
MAKE AN
ENTRANCE

PRE-SELLING NOW!



ASPEN LAKE

LUXURY TOWNHOMES



IH
IMPERIAL HOMES
BUILDING PEACE OF MIND

At Imperial Homes, we take pride in accommodating every family's needs. Our townhomes are designed by the finest architects to create luxury features at affordable prices. Whether you are just starting out or getting ready to downsize, Imperial Homes has a design to suit you. For more information please contact:

Andrew J. Smith, Real Estate Broker • 519.972.1000

Kim Gazo, Master Accredited Senior Agent, Sales Representative • 519.972.1000

WWW.IMPERIALHOMES.BUILD



Palazzi
Since 1960

3636 Walker Road, Windsor
519-969-3941
www.palazzibros.com

porcelain tile | hardwood | granite & quartz countertops | vanities & faucets

Your very own summer retreat...without the commute.



Pool Installations • Pool Renovations • Liner Replacements • Concrete • Spas
YOUR BACKYARD POOL SPECIALISTS

Now TWO LOCATIONS to serve you better in Lakeshore & Kingsville!

Lakeshore - County Rd #42 (just east of Patillo Rd.) **(519) 727-5959**

Kingsville - 313 Main St E #16 **(519) 712-9533**



Windsor & Essex County
Exclusive Authorized Dealer

NOW AVAILABLE at our Kingsville location

Outdoor Patio Furniture by RATANA

Smokeless Fire Pits by BREEO

info@thegreatoutdoorspools.com



www.thegreatoutdoorspools.com

Sustainable sensibility.



COULSON

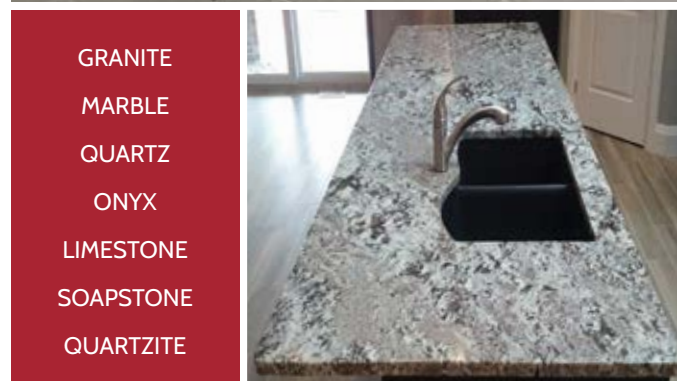
design-build inc.

Experience the difference.

custom home builder and designer

151 claremont amherstburg on

519.818.6601 | coulsondesignbuildinc@gmail.com | coulsondesignbuild.com



GRANITE
MARBLE
QUARTZ
ONYX
LIMESTONE
SOAPSTONE
QUARTZITE



*Specializing in all your
custom fabrication needs.*

HAMPTONS
STONE & FLOORING COMPANY INC

10-2740 Jefferson Blvd, Windsor
519.944.4420

Rustic Inspirations



**ESSEX HOME
FURNISHING**

Mon-Wed 9:30am-6pm | Thur-Fri 9:30am-8pm
Saturday 9am-5pm | Sunday 11am-5pm

519-776-5553
www.ehstyle.com



More than a golf resort...



It's a lifestyle that's care-free, active, entertaining or whatever you want it to be. Comfortably condensed into 167 acres of lavish Essex County Landscape, Rochester Place Golf Club & Resort offers everything you need to optimize your leisure time. With an 18-hole golf course, award winning restaurant and countless other amenities it's truly an oasis for anyone looking to spend their days doing everything and nothing all at once. With both purchase and rental options available, the only thing easier than getting into a Rochester Place cottage is the lifestyle you can expect to come with it.

Own your *Seasonal Oasis*
for only **\$89,900**
Plus receive a **FREE 3 YEAR GOLF MEMBERSHIP**

**FINANCING
OPTIONS ARE
AVAILABLE**

**DAILY
TOURS
11AM - 3PM**

TINA ROY REAL ESTATE BROKER

RE/MAX
Preferred Realty Ltd. Brokerage
Independently Owned and Operated



tina



**Red Tree
Collection**
By Landscape Effects Group



rochesterplaceresort.com | 981 County Rd 2, Belle River | 519.728.2361



Phil understood what we wanted and delivered beyond our expectations. - Dina & William Willis



PHILIP FERNANDES
CUSTOM RESIDENTIAL DESIGN

519.990.9115
pfernandesdesigns.com

It's hip to be square.

Prodigious performance
...and only 8.3" x 8.6" x 8.3"!



CES 2016
Naim Mu-so Qb

audio TWO
THE MUSIC LOVER'S CHOICE

Tel: (519) 979-7101
www.audiotwo.com

Tuesday - Friday: 10:30 - 5:30
Saturday: 10:30 - 5
(or by appointment) 11400 Tecumseh Rd. at Banwell • Windsor

STYLE • COMFORT • IDEAS • REAL ESTATE

ourhomes
WINDSOR & ESSEX COUNTY

REGIONAL PUBLISHER/FRANCHISE OWNER Glade Publishing
Rich Mancini, 519.564.6014
rich.mancini@ourhomes.ca
John Farlinger
john.farlinger@ourhomes.ca

REGIONAL MANAGING EDITOR Nancy Belgue
nancy.belgue@ourhomes.ca

REGIONAL PRODUCTION MANAGER Kelly Donaldson
kelly.donaldson@ourhomes.ca

MARKETING & ADVERTISING Rich Mancini, 519.564.6014
Elizabeth Fernandez, 519.259.9137

OUR HOMES is a registered trademark of OUR HOMES MEDIA GROUP INC.
OUR HOMES Windsor & Essex County is published four times a year by Glade Publishing under the licence of OUR HOMES MEDIA GROUP INC.

OUR HOMES is distributed to residents of Windsor Region via direct mail.
Copies of OUR HOMES are available for free pick up at high traffic locations throughout the region. OUR HOMES is distributed throughout select B&Bs and hotels, Sobeys and to select business leaders via direct mail.

Please send all letters and/or feedback to OUR HOMES Magazine, 12944 Little River Rd., Tecumseh, Ontario, Canada N8N 3B3. Or email us at editor@ourhomes.ca. All letters received are subject to editing for grammar and length.

OUR HOMES MEDIA GROUP INC:

EDITORIAL

EDITOR-IN-CHIEF Georgette McCulloch
georgette.mcculloch@ourhomes.ca

ASSOCIATE & WEB EDITOR Laurel Fortin
laurel.fortin@ourhomes.ca

MANAGING EDITORS Nancy Belgue, Adrienne Brown, Laurel Fortin, Walter Franczyk, Mary Hatt, Sarah Hoy, Gina Makkar, Tiffany Mayer, Georgette McCulloch, Annette McLeod, Melissa North, Jennifer Schleich

ART

ART DIRECTOR Tara Chattell
tara.chattell@ourhomes.ca

ASSOCIATE ART DIRECTORS Sheila Britton, Robynne Sangiuliano

DIRECTOR OF PHOTOGRAPHY Jason Hartog
jason.hartog@ourhomes.ca

PRODUCTION

PRODUCTION DIRECTOR Lynn Derrick
lynn.derrick@ourhomes.ca

PRODUCTION MANAGERS Julia Dempsey, Kelly Donaldson, Marilyn Reid, Abby Reynolds, Tracy Shuttleworth

OPERATIONS

MANAGING DIRECTOR, SALES & MARKETING Jamie Jefferson
jamie.jefferson@ourhomes.ca

MANAGING DIRECTOR, OPERATIONS Georgette McCulloch
georgette.mcculloch@ourhomes.ca

ACCOUNTING Donna Duggan

ADMINISTRATIVE ASSISTANT Lisa Merrell

CONTRIBUTORS

Brandon Barre, Nancy Belgue, Tara Chattell, Jackie Glass, Shelby Hilson, Gillian Jackson, Steve Pomerleau, Stephanie Redmond, Yanic Simard, Max Wedge

Advertisements and the content, including photos, of advertisements published within OUR HOMES magazine are supplied solely by the advertiser and neither the publisher nor OUR HOMES Media Group Inc. accept responsibility for opinions expressed in advertisements or for copyright issues with regards to photos, advertising copy and advertisements, nor shall they be held liable thereby. By act of reading this publication, all advertisers and readers agree to indemnify and hold harmless both OUR HOMES Media Group Inc., and the publisher thereby. Copyright ©2016 OUR HOMES Media Group Inc. All rights reserved. Reproduction without permission is prohibited.

OUR HOMES CAN BE FOUND IN THE FOLLOWING MARKETS:

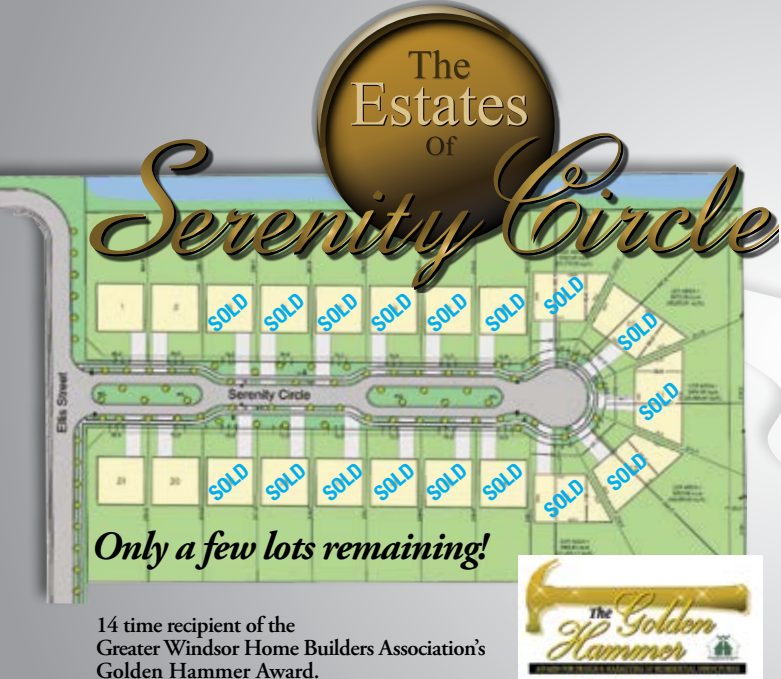
Barrie • Durham Region • Grey Bruce • Hamilton • London
• Mississauga • Muskoka • Niagara • Oakville/Burlington/Milton
• Ottawa • Peterborough • Southern Georgian Bay • Region of Waterloo
• Wellington County/Orangeville/Caledon • Windsor • York Region



Call Evola Builders today and let 14 time award winner John Evola build the home you always imagined. We want to put our talents to work for you and we look forward to working with you!


The Estates of Serenity Circle, in the heart of LaSalle.
Take a drive in to see how good life can be.

The Estates of Serenity Circle



Only a few lots remaining!

14 time recipient of the Greater Windsor Home Builders Association's Golden Hammer Award.



Builder/Developer

EVOLA Builders

519.978.0408
info@evolabuilders.com
evolabuilders.com

*Building a new home
can be overwhelming*



Urbanhome



Our Promise...

*an outstanding experience with
beautiful results every time!*

Jodi Mason
Principal Design Consultant

Philip Chouinard
Interior Design Consultant

3D Virtual Design
Full Interior Design Services
4409 Seminole St. Windsor 519-974-4663
www.urbanhomewindsor.com



NEW HOME BUILD DESIGN PACKAGES NOW AVAILABLE

editor's note



WHEN I WAS A KID, NOTHING SMELLED MORE LIKE summer than Freshie powder. I would wet my finger, dip it in the grainy, pale pink powder to thoroughly coat it, and would then head outside to our rickety back steps. There, I would spend a happy 10 minutes inhaling the sweet smell and licking my cherry flavoured finger until my tongue and finger were roughly the same colour. If I was lucky, I could fit in several trips back to the source before my mother hollered at me and tossed me outside for good.

Times and tastes sure change. Summer now means sitting on my front porch enjoying something a little more sophisticated than a finger full of Freshie powder. And, oh aren't we lucky to live in an area that produces some brilliant, award-winning wines? You have to read our Style Picks in this issue. I have done some very hard work on your behalf (heh). I have travelled the back roads of the County chasing down some of the area's great summer wines. From a wonderful rosé, to a sassy red, to a crispy Riesling, I soldiered on, ever mindful of the job that had to be done. Along the way I collected some great stories. Rumour has it that after sampling a local wine while dining on Erie Street, George Clooney hired a car and tracked down the winery that produced it. He bought several cases, arriving and departing from CREW one morning like a shooting star. At Paglione Estate Winery we heard the story of the late owner, who would serenade his guests with his concertina while they enjoyed their wood-fired pizzas.

I leave you now with one thought. Summer is short. Pour yourself a glass of something special. Head out onto your porches, decks, blankets on the lawn or boats on the water. Put your feet up, take a sip and breathe. Maybe you'll smell a childhood memory.

Nancy

Nancy Belque, Managing Editor
nancy.belque@ourhomes.ca

Follow us @OurHomesMag

online Get more at ourhomes.ca

A NAME FRIENDS RECOMMEND

Team Brad Bondy

Direct-519-919-1187
www.bradbondy.com
bradbondy@remax.net

Brian Bondy* Brad Bondy* Diane Schultz*

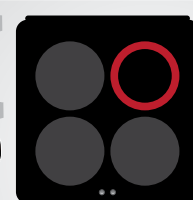
*Sales Representatives

Windsor/Essex County **#1 TOP PRODUCER**
At RE/MAX Preferred Realty Ltd., for 2015 based on MLS Listings sold for that year



FRIGIDAIRE
PROFESSIONAL

THE **APPLIANCE**
SHOPPE
YOUR HOME STARTS HERE



Don't forget to
check out the



4072 Walker Rd., Windsor 519.969.0152
www.theapplianceshoppe.com

CONTENTS

SUMMER 2016



38



52



34



better living through design



22

ON THE COVER

A Perfect Compromise.
Story, page 38. Photography
by Steve Pomerleau.

18

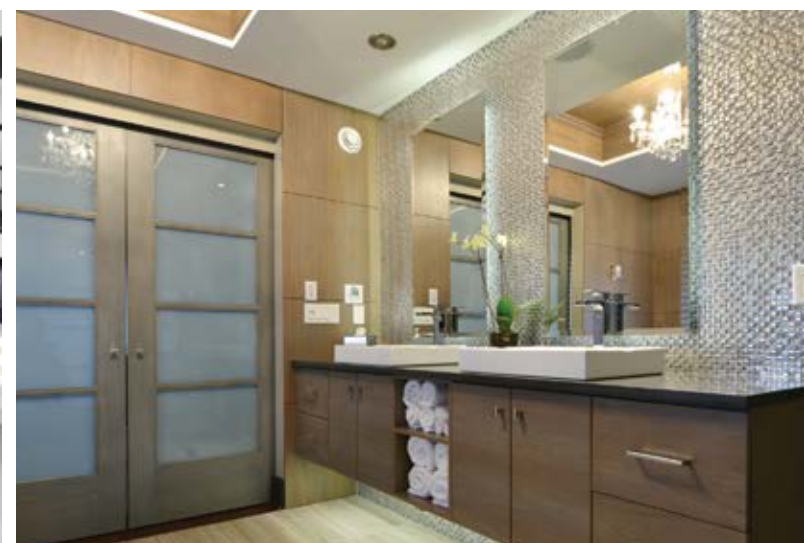


LOCAL FEATURES

- 18 Style Picks** Local vintages are making summer sweet indeed.
- 22 Home & Builder** The ultimate downsizing success story and the award-winning builder who made it happen.
- 30 Comfort Zone** Cover up in style. Stretch your enjoyment of the outdoors with Windsor Tent & Awning Inc.
- 38 Feature Home** He said: she said. Two visions, one perfect home thanks to a team with a sense of adventure.
- 52 People** Richard Pursel of Lionheart Interiors makes every home he touches into the homeowner's personal expression of taste and style.

DEPARTMENTS

- 10 Editor's Note**
- 16 Advice** First Impressions
- 34 Outdoor Living** Lit From Without
- 46 Decorating** Outdoor Luxury
- 50 Good Taste** Cheers to Radlers
- 56 Design Ideas** White Hot Kitchens
- 58 Home Resource Directory**
- 62 Finishing Touch** Creating in Concrete



functional simple contemporary inspiring sophisticated classical

FRANK
CREMASCO
FINE CABINETRY

FRANK CREMASCO CABINETS | 755 MORTON DRIVE | WINDSOR | 519.734.8289

www.cremascocabinets.com



Luxury Living

...on a
smaller
scale.

The Villas at FOREST TRAIL

Photos by Devon Pastorius

The newest residential development from Timberland Homes is an exclusive community of master-built homes offering fifty-two maintenance-free townhomes comprising twenty semi-detached homes and four triplexes. Generously proportioned from 1,500 to 2,000 square feet, these units are perfectly suited for luxury-minded, quality-conscious downsizers of any age.

“We use the same architectural details, skilled tradespeople, interior and exterior finishes as we do in larger executive homes,” confirms Timberland Homes president Gino Piccioni. “We see people downsizing younger and younger these days and while they may want less space and no maintenance worries, they still want the best of the best. These townhomes are specifically designed to meet the needs of these people.”

Timberland Homes has always stood for quality. The company is renowned for building houses that tell stories and the Villas at Forest Trail are no exception. Designed with a timeless appeal and incorporating a range of industry-leading ideas, the Villas create a sense of community rarely found in a new development. “The homes are built in a very detailed, classic style,” states Piccioni. “The oversized window and doors systems, intricate gables and sky-high rooflines are just a few examples of how we spared no expense architecturally.” Other high end details include full brick and stone construction, exposed aggregate driveways as well as a private attached two-car garage with internal access.

The Villas at Forest Trail are Energy Star certified. Energy Star Certification is an exacting third-party, performance-based assessment that requires homes to exceed Ontario Building Code requirements by at least 20 percent. “Your Energy Star Home

will be more efficient than most new homes in the province,” explains Piccioni. “This means your energy bills will be at least 20% lower than a new home built to basic OBC standards.” Ever mindful of the homeowner’s comfort, Piccioni also made it a priority to separate the Villas by an extra-thick, ultra-insulated “ultimate party wall assembly” that far surpasses OBC standards in terms of Sound Transmission Class rating.

The Villas at Forest Trail also provide surprisingly ample space for outdoor entertaining. Each Villa comes complete with an over-sized rear covered patio as well as a spacious backyard, creating the perfect setting for family and friends to gather.

Having said all this, however, the true focus of The Villas at Forest Trail is gracious living without the responsibility of home maintenance and the townhome association that provides snow-removal and grass-cutting services makes locking up and leaving for vacation so easy and stress-free you might wonder why you didn’t make the move years ago.

By creating a masterfully designed community that offers the components of true luxury real estate, Timberland Homes has answered a growing need in the Windsor area. The Lasalle location is close to all amenities, the architecture is dazzling and the intimate setting ensures maximum privacy. The generously proportioned ranch end-unit showcased here offers 10-foot ceilings, a private covered porch, private drive, walk-in pantry and top-of-the-line cabinetry with granite counters throughout. Perfectly situated a short walk to trails yet conveniently located a brief drive to shopping outlets, grocery stores and all local highways the Villas at Forest Trail will exceed expectations.

Fully loaded models start at \$454,900. If you are looking to downsize, but still desire the kind of quality and craftsmanship Timberland Homes is renowned for, your search stops here. For further details go to timberlandhomes.ca or contact Teresa Neusch at 519.966.0444.





Designer **Stephanie Redmond** shares her ideas.

FRONT ENTRIES

Much like your smile when meeting someone for the first time, your front door is the first impression of your home. It hints at the style to be found on the inside. Sometimes mess will permeate a front porch. Sometimes tidiness seems to glow from the inside out. There may be a hint of family life, a dog or kids, or a hint of artfulness – a homemade bench or a welcoming chalkboard. Whichever category you fall into, your front entry provides a clue to what lies ahead.

So how can we personalize such a small and seemingly important space?

A home will dictate the style of entry to a point, but it is also where you can add your own flair. For instance, you could add a glass door with a modern, lever handle to a red brick Victorian to give it a more contemporary edge. Eliminating the traditional, raised-panel, solid wood door will allow light to flow into your hallway and bring a modern touch to the outside of the home. For these changes to be made on a Victorian-style house, check with your local heritage society to ensure there are no restrictions on your updates.

1



ADD COLOUR

One easy tool for change is paint. For instance, an otherwise simple door redone in a bright welcoming colour can completely transform the feel of your home. Sometimes a good paint job is the best solution for a quick clean-up. Farrow & Ball has fabulous palette recommendations for window trim, shutters and front doors.



2



3

CHANGE HARDWARE

I really like the trend towards oversize door hardware. Rather than using a simple lever or knob, an oversize handle looks contemporary and unique. It defines the front door and provides a great design feature, dressing up an otherwise lacklustre,

functional piece. The style works with modern and traditional depending on the finish of the hardware. See Rocky Mountain Hardware for a more traditional finish and Unison Hardware, Inc. for a more modern look.

IMPROVE FUNCTION

We are about to embark on a renovation and one of the items I'm most excited about is a steel grate at my front door (for inside too). This is a functional decision. We have a lot

of gravel around our house and dirt seems to follow my kids and pets wherever they go. Insert a grate at the door so sand and gravel will fall right through and you can minimize your sweeping efforts. It also doubles as a slip-resistant surface.



4

UPDATE LIGHTING

Lighting is key for your front door. I prefer a very small and sleek light at the entry if it's coupled with some overhead LED pot lights to really illuminate the area. With LEDs being so small and versatile, lighting options have become much more creative. For a modern approach, use strip lighting

under the nosing of your stairs to light up each step. It's a cool look and really useful on a dark night.

ACCESSORIZE

Last but not least, if you're into accessorizing, try contemporary style numbers for your house in a coordinating but contrasting colour. And you will probably have a plant and a mat. Every time we go away our plant dies at our front door, which is why I'm so intrigued by a self-watering planter. Maybe it's just laziness but I was one step away from



5

6

248

purchasing a plastic plant and I think these are genius. Now, I just have to remember to fill up the water reservoir!

One of the best ways to assess a situation is to stand back and take a photo, then look at the photo. What do you see that you don't like? Sometimes a new perspective is all it takes to gain a little creative insight. Good Luck! **OH**

1. FARROW & BALL: Rectory Red No. 217 Estate Emulsion
2. UNISON HARDWARE, INC.: Inox T-Shape Commercial Door Pull
3. ROCKY MOUNTAIN HARDWARE: Metro Entry Set 2-1/4 x 30" in Silicon Bronze Rust
4. HINKLEY LIGHTING: Luna Outdoor LED Wall Light
5. BARRACUDA INC: Dot Self-Watering Planter
6. NUMBER MY HOUSE: Modern House Numbers



Revolutionary New Landscape Product

RETAINING WALLS | WATERFALLS | GARDEN EDGES | STEPS | TERRACES | PONDS | ECO-SYSTEMS | NATIVE PLANT GARDENS



LEDoux
Interiors | Exteriors
DESIGN STUDIO

ARCHITECTURAL | CAST STONE | PLASTER | CONCRETE | DESIGN

Two time Detroit Home Design Awards Winner



519.567.9747 LedouxInteriors.com



1



2



3

A WINE for every STYLE

There's nothing we like better than a perfect glass of wine to complement the delights of the season. From some of the finest wineries in Essex County, here is a selection of delicious local vintages to suit your personal style. PHOTOGRAPHY **MAX WEDGE**

1 SPRUCEWOOD SHORES ESTATE WINERY

Lady In Red
For elegant, luxurious moments, this bold, medium-bodied, award-winning red is a sexy blend of Cabernet Franc, Merlot, Cabernet Sauvignon and Pinot Noir. The pedigree makes this sophisticated wine very approachable – but when paired with Brix chocolate – it becomes unforgettable. Available at LCBOs across the province.

7258 County Rd. 50 W., Amherstburg
519.738.9253 | sprucewoodshores.com

2 COOPER'S HAWK VINEYARDS

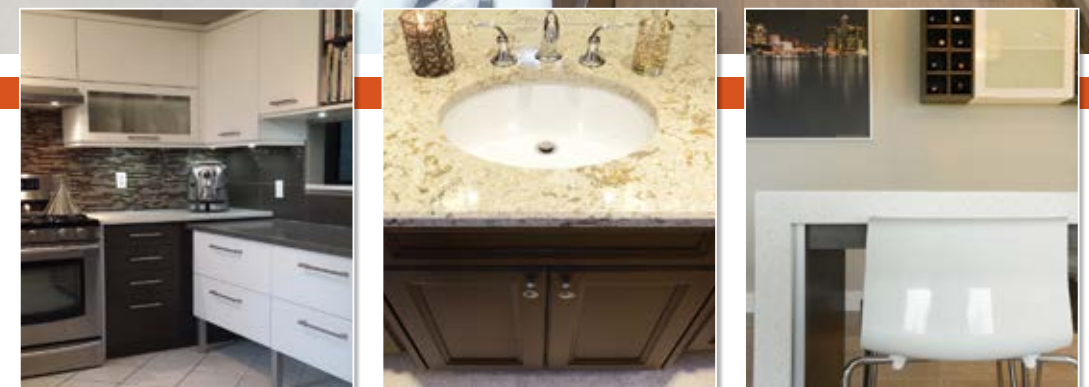
Riesling
A welcome sight at the table all year-round, Cooper's Hawk Riesling is wonderful with slightly spiced seafood or crispy perch. Also lovely with summer desserts like roasted peaches and blackberry Pavlova. A perfect gift wine – pack it up in one of the charming 100 per cent mulberry bark paper gift bags available in the winery's gift shop.

1425 Iler Rd., Harrow
519.738.4295 | coopershawkvineyards.com

3 COLIO ESTATE WINES

Lily Sparkling Wine
Say hello to summer with a dramatic flair. Make every day a celebration with this clear, bright, award-winning sparkling wine. Perfect just about whenever, but especially great when you want to add a festive touch to any occasion.

1 Colio Dr., Harrow
519.738.2241 | coliowinery.com
Continued on page 20



Masters of Distinctive Cabinetry

MASTRO
KITCHEN STUDIO

2863 Howard Ave., Windsor 519.250.6336 mastrokitchenstudio.com





4

4 VIEWPOINTE ESTATE WINERY

Focal Pointe Cabernet Franc 2010
Robust and deeply flavourful, this full-bodied and smooth red is another award-winning vintage from the county's exceptional wineries. Easily available at LCBOs across Ontario, this complex wine was made from one of the winery's best vintages on record. Serve it with one of the fantastic recipes from the best-selling *Harrow Fair Cookbook*.

151 County Rd. 50 E., Harrow
519.738.0690 | viewpointewinery.com

5 PAGLIONE ESTATE WINERY

Cabernet Franc

Rustic and old-world, this fulsome blend of Cabernet Franc, Cabernet Sauvignon, Merlot, Pinot Noir and Syrah grapes is the winery's bestseller. It pairs perfectly with their wood-fired pizzas that are available on Saturday and Sunday evenings year-round, as well as Fridays in summer. New this year: homemade gelato. Be sure and sample some while you're picking up a bottle of this friendly wine.

724 County Rd. 50 E., Harrow
519.738.0597 | paglioneestatewinery.com

6 COLCHESTER RIDGE ESTATE WINERY

Red Sky at Night

The old saying "red sky at night, sailor's delight" inspired this beautiful sunset rosé. Ideal with grilled foods, it offers bright, red-fruit flavours of strawberry and raspberry with a hint of orange. Its relaxed, adventurous palate is perfect for brunch, porch-sitting and casual dining. Set out some handcrafted local wine jellies and savouries, a baguette and a chunk of cheese, unfurl your troubles and sip the night away.

108 County Rd. 50, Harrow
519.738.9800 | colchesterridge.com OH



5



6

WHEN'S THE BEST
TIME TO CALL YOUR REALTOR®?



ABOUT NOW.

Even if you're just thinking about buying or selling your home, talk to a REALTOR®. There are vitally important questions you need to ask about a real estate move, and a REALTOR® has the knowledge and experience to find the answers.

Contact your REALTOR®. They do the homework so that you can get the best possible outcome.

OREA | REALTORS® we do the homework.ca

REALTORS is a trademark controlled by the Canadian Real Estate Association. Used under license. WE DO THE HOMEWORK is a trademark of the Ontario Real Estate Association.

WINDSOR-ESSEX COUNTY ASSOCIATION OF REALTORS®
519.966.6432 | windsorrealstate.com | facebook.com/wecrealtors

HunterDouglas



Style
& Innovation
SEE WHAT'S NEW FOR 2016

VERTICAL
Concepts

**WE MEASURE,
WE INSTALL,
WE DO IT ALL!**

- Residential & Commercial
- Motorized Window Treatments
- Vertical Blinds & Shutters
- 2" Wood & 2" Faux Wood
 - Panel Track
 - Solar Screen
 - Free Installation
- Full line Hunter Douglas



Guy Peltier
31 years in the business

Call for a **FREE ESTIMATE**
519-974-3774
www.verticalconcepts.ca
229 Lauzon Rd. @ Riverside Dr.



ALL
together
NOW!

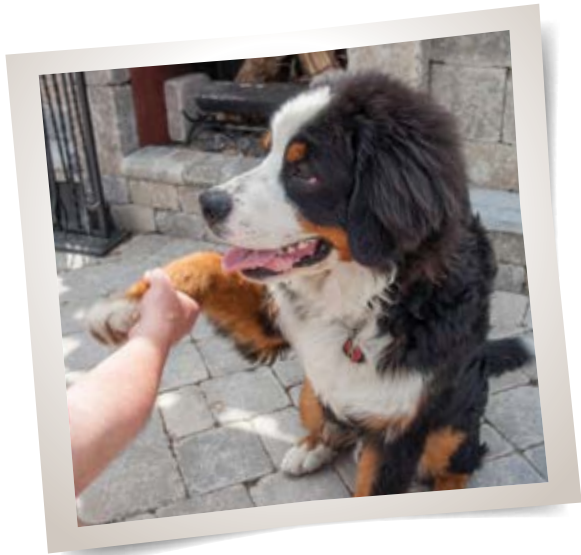
STORY **NANCY BELGUE** | PHOTOGRAPHY **MAX WEDGE**

Their newly-built home may have grown initially from the homeowners' wish to downsize, but it has also filled another less obvious desire: to create a closer-knit family experience.

And, although leaving their 6,000 sq. ft. home on Riverside Drive wasn't without some angst, the couple hasn't looked back. "We thought about selling the Riverside Drive house for some time," the couple reflects. "We wanted a change, something smaller and more physically together. Upkeep was time consuming and we knew that downsizing was the thing to do. It was just cosier."

While weighing their options, realtor **John Cortese** from **Manor Windsor Realty Ltd.** came upon a Kolody-built home (**Kolody Custom Homes**) in a nearby neighbourhood. "It was actually a home Dave Kolody was building for his father," the homeowner says. "But our realtor had heard that Dave's father decided not to move and this home became available. It was still in the early stages, only the foundation had been poured, so we were able to work with Dave from the beginning. He showed us the plans and we thought it was the house for us. We made only a few minor adjustments, and here we are."

At 3,000 square feet with three bedrooms plus den and a fully finished basement, the new home may be half the size of the Riverside Drive house but it is every bit as luxurious. *Continued on page 24*



THIS PAGE: Scenes from a perfect summer day. Wood-fired pizza in a backyard paradise. The granite island is from Universal Marble & Granite. **OPPOSITE, TOP:** The stunning home was built by award-winning builder Dave Kolody. **BOTTOM:** King, the family's Bernese Mountain dog, shakes a paw.



home & builder

The chef's kitchen ([Windmill Cabinet Shop Ltd.](#)) fulfills the homeowner's love of good food and fun family get-togethers. The granite island ([Palazzi Bros. Tile & Granite](#)) surrounded by sleek, contemporary barstools ([Bertoni Chairs & Things](#)) is the scene of many memorable meals. Growing up in Windsor, the homeowner remembers his extended Italian family enjoying celebrations together. After leaving the city for university, including time away studying in Italy, he settled initially in the London area, but his heart belonged to Windsor. "I wanted to come back for a long time," he confesses. "And when a career opportunity opened up here, I couldn't pass it up. Fortunately my wife was supportive of the move." That move is now 11 years behind them, and the family is fully entrenched in the Windsor experience. Any given weekend finds the homeowners preparing gourmet, wood-fired pizzas in their backyard pizza oven ([Perciballi Pools & Spas](#)). Their basement is a jam space where the homeowner, his son, family and friends get together to create music.

Filled with interesting art, collections and personal talismans, the home is also a testimony to the homeowners' wide-ranging passions. Lovers of music, art, books, food and travel, they have filled their home with things

Continued on page 26



The homeowner's passions are on full display. Music, art and good food. **OPPOSITE, TOP:** The kitchen was designed and installed by Windmill Cabinet Shop Ltd. **BOTTOM LEFT:** The hand-painted dishes are imported from Italy. **BOTTOM RIGHT:** The living room overlooks the backyard and the golf course behind.



Grey slate tiles with gold insets add drama to the master en suite.

that evoke their shared interests and each of their acquisitions tells a story or brings back a memory. “The painting by the fireplace was done by an Italian artist,” says the homeowner. “There are no automobiles in the town where this artist lives. We went there to see the artist’s studio. All the houses were stone from the Etruscan era. The artist told us, “I’ll paint you a picture of it.”

Another piece reflects the homeowner’s love of polar bears. The gorgeous Inuit sculpture was purchased in Churchill, Manitoba where he travelled to see the bears gathering en masse for their seal hunt.

The homeowners worked with designer **Helena Ventrella (Helena Ventrella Design Ltd.)** to choose furnishings and finishes that enhance their substantial art collection. The living room is casual and friendly – yet sophisticated with the chrome sofa bench and Calligaris occasional chair. Books are everywhere, spilling out of the shelves, overtaking the coffee table and piling up on the end tables. A baby grand piano dominates the room, flanked by a guitar and one of many original oil paintings.

The exterior of the home is a nod to gracious living Italian-style. Designed in conjunction with **Creative Homescapes**, the backyard patio features the pizza oven, a fountain, a bar, a fire pit and a covered seating area. Herbs flourish beside the cooking area, water trickles ever so softly in the background and smoke rises as the homeowner pulls a freshly baked pizza out of the 750-degree oven. Wine is brought out. The sun is high in the sky. It is a beautiful day in the neighbourhood.

Family life, togetherness and downsizing: it adds up to a very good thing. *Continued on page 28*



TOP LEFT: Vessel sinks and sleek granite make the en suite a sophisticated retreat. The oversize shower glass is from Bay-View Glass & Mirror Ltd. **LEFT:** The master bedroom is, again, a reflection of the homeowners’ love of collecting original art.



Bertoni
CHAIRS & THINGS

301 Edinborough, Windsor, ON
519.966.1280 bertonichairs.com



Where art
meets
function.

Celebrating
30 Years
of business excellence.



Add a little spark to your summer.

FOREST GLADE
FIREPLACES

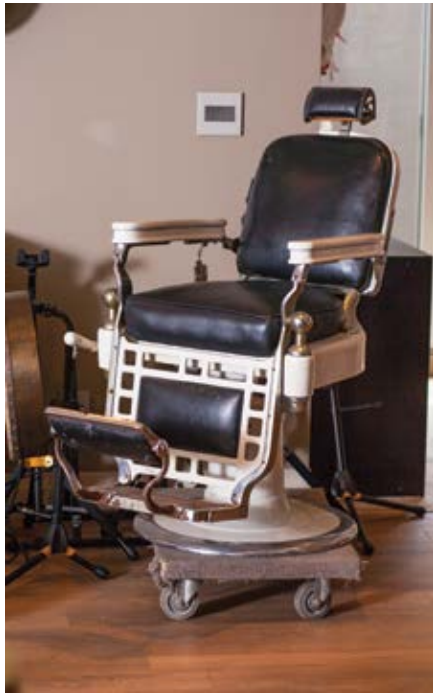
WINDSOR | 735-2229

LIFE STYLES
BY THE FIRE BOX

LEAMINGTON | 326-8585



ABOVE: The jam space in the basement is a site of many lively late-night sessions.
RIGHT: The homeowner's father was a barber. This is the chair he used for his entire career.



MEET DAVE KOLODY

2016 Tarion Award Winning Builder
Building Relationships...One House at a Time.

"People know we build houses," says Dave Kolody, owner of Kolody Custom Homes. "But what we've learned with over 30 years' experience and maintaining the core values that my parents insisted on, is that a house may be a structure, a building, but it is also a home. By listening to our customers, and finding a way to incorporate their vision all the while maintaining the standards for safety, longevity and quality finishes that we stake our reputation on, we also build relationships. That is what my wife and I try to do every day. We are fortunate to have dedicated employees, vendors and suppliers who work with us to get this accomplished. We may sell houses, but we build homes."

About Tarion

The 2016 Homeowners' Choice Awards for the best customer service is chosen by Ontario's new homeowners. These are the only awards that focus exclusively on customer service and let the owners decide who excels.

The awards were presented at a luncheon on April 28, 2016. The winner in the Small Volume Category was Kolody Homes, first-time finalist and recipient. Formerly known as the Tarion Awards of Excellence, the Homeowners' Choice Awards are determined after compiling responses from a homeowner survey completed by anyone who moved into a new home between October 1, 2014, and September 30, 2015. Homeowners were asked to evaluate every customer service touch-point in the new-home buying process. The questions all centred on customer service delivery. A win in this category is a true endorsement of customer service excellence. **OH**

Affordable Elegance
Make the right call...**519.979.7666**
Get inspired & see how wonderful your space can be.



ANGILERI
Kitchen & Bath
Visit our showroom
1825 Manning Rd. Tecumseh
Mon - Fri 9:00 - 6:00 Saturday 9:00 - 3:00
angilerikitchenandbath.com

The New Age of Concrete



CONCRETE COUNTERTOPS • VANITIES • FIREPLACE SURROUNDS
OUTDOOR KITCHENS • FIRE PITS • CUSTOM CREATIONS

5 STAR DESIGNS
DECORATIVE CONCRETE
Windsor, Ontario
519.915.7575
5stardesigns.ca


Decorating Ideas
Introducing
FARROW & BALL
Paint and Wallpaper to
Windsor and Essex County



F&B
FARROW & BALL
DORSET ENGLAND
HunterDouglas
Benjamin Moore

3059 Dougall Avenue, Windsor 519-966-7102
decoratingideasstore.com

**i heart
local
art**



nancyjohns.com

comfort zone



PHOTOS BY MAX WEDGE



PHOTOS COURTESY OF SUNBRELLA

Sunbrella fabrics are used for their 100 per cent UV protection. They're water-repellent and come in a wide variety of patterns and colours.

» The Windsor Tent and Awning Team: President Manny Farao, Rebekah Senko, Joe Christenson, Crystal Hubley, Matt McGuire, Jessica Haggert, Evan Hunt, Meagan Fortier (holding cat Psycho), David Gross, Natalie Dadona, Jeff Sunderland.



PHOTO COURTESY OF SUNBRELLA

THEY'VE GOT YOU COVERED

THE PLACE: The place for awnings, **Windsor Tent & Awning Inc.** has been part of the Windsor landscape for 120 years – making it the oldest surviving manufacturing business in the city. Current owner Manny Farao started working for the company while attending St. Clair College. He so impressed Jim Jepson, the owner at that time, that Jepson took him under his wing, taught him how to sew, take care of customers and manage the business. When Jepson passed away, Farao carried on in his mentor's shoes, adding his own sense of design and flair for innovation.

THE STYLE: The showroom has a friendly and open energy that makes it easy to see why some core staffers have been with

the company for 20-plus years. And, like any business that has survived for over a hundred years, customer service has always been first and foremost. When a customer arrives needing to replace the battery in his awning's remote control, the general manager offers not only to install it, but gives it to him at no charge. "We treat our customers like friends and family," says Crystal Hubley. "They come back over and over and we never take that for granted." Then there's Psycho – the office cat and official greeter – who is so popular with customers that they often ask to see him when they visit the showroom.

WHAT'S HOT: Permanent canopies are very popular because they can function



PHOTO BY MAX WEDGE

like an extended space of the home. Always design-forward and innovative, Farao has developed an aluminum trim that not only protects the valance from wear and tear, it extends the awning's life while creating a sophisticated, tailored, and contemporary look.

FAVOURITES: Permanent canopies are bestsellers because they can be used in three seasons to extend living space over decks, patios and even grilling areas. Farao's aluminum trim and the two-tone valance have also proven to be customer favourites.



Expert sewer Rebekah Senko at work.



Windsor Tent & Awning custom manufactures its products on site.



PHOTOS COURTESY OF WINDSOR TENT & AWNING



PHOTO COURTESY OF SUNBRELLA

SEASONAL: Windsor Tent & Awning uses Sunbrella fabric exclusively because it offers 100 per cent UV protection, is water-repellent, affords three-season use and comes in a wide variety of fashion-forward patterns and colours. Enclose your permanent canopy with vinyl walls to make it an ideal storage space for outdoor gear during the winter months. Awnings have also been shown to increase a home's energy efficiency by reducing inside temperatures by up to 20 degrees.

GET THERE: 1485 Lauzon Rd., Windsor 519.944.2271 | windsortentawning.com **OH**

The Legal Edge Team

Having met Mark on the squash courts, it was a considerable amount of time before I even knew his line of business. Mark has the ability to avoid being a pressure salesman, yet provide you with great insight and knowledge. There are simply no other real-estate agents in the area who have the marketplace knowledge and inside track on great properties like Mark Eugeni & Tina Pickle. Often times we were able to view homes the same day they were listed, many times even before hitting the market. This is a key element to obtaining the home you want. We've purchased and sold two homes and a piece of land with the Legal Edge Team and we certainly recommend their services to all our friends and family. Thanks to Mark and Tina and Donna we've found the perfect home.

The Brancaccio Family
 Todd, Renée, Austin, Jaxon and Addison
 Vice President / General Manager
 Detail and Design 2000
www.detailanddesign2000.com



2015 #1 SALES AGENT 10 YEARS IN A ROW

2006 2007 2008 2009 2010 2011 2012 2013 2014 2015

#1 LISTING AGENT FOR 9 YEARS

Whether **BUYING** or **SELLING**, put your trust in the legal knowledge of a lawyer, the success of a complete marketing campaign and the benefits of a professional sales team.



Selling Windsor...
 Beyond Expectations
519.250.8800



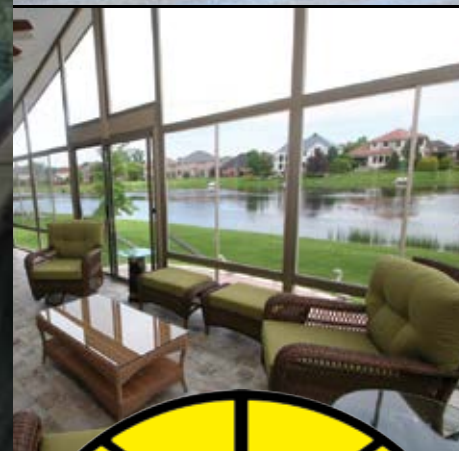
Mark A. Eugeni
 B. Comm., MBA, JD
 "The Legal Edge"
 Sales Representative
 Licensed Attorney w/State Bar of Michigan
 mobile: 519.796.8454
sales@markeugeni.com
www.markeugeni.com



Tina Pickle
 Sales Representative
 mobile: 519.791.6626
sales@tinapickle.com
www.tinapickle.com



Donna Eugeni
 Administrative Leader



Let the Sunshine into your Life!



*So many options for your custom design.
 Come in today to discuss your vision.*

4600 Rhodes Drive, Windsor, ON 519-944-6006 seatonsunrooms.com

NIGHT LIGHTS

ILLUSTRATION **HINKLEY LIGHTING**

With a few beams of light, your outdoor spaces can sparkle underneath the night sky. Light fixtures in the right place will enhance your yard's style and extend your evening's outdoor entertaining. OUR HOMES shows you how to light your property and offers some style ideas.



Some lighting inspiration for your outdoor space...

FLUSH MOUNTS 1. KICHLER: Ashland Bay 2. FEISS: Freemont in Hi Gloss Grey 3. PROGRESS LIGHTING: Westport in Antique Bronze	  
HANGING LANTERNS 1. PROGRESS LIGHTING: District in Metallic Gray 2. HINKLEY LIGHTING: Walker in Buckeye Bronze & Heritage Brass 3. FEISS: Bluffton 3-Light in Oil Rubbed Bronze	  
WALL LANTERNS 1. PROGRESS LIGHTING: Brookside 12-inch in Cognac 2. KICHLER: Clear Point 1-Light 3. HINKLEY LIGHTING: Aria	  
POST/PIER LANTERNS 1. KICHLER: Halleron 3-Light 2. FEISS: Chelsea Harbor 7-inch in Storm Cloud 3. PROGRESS LIGHTING: Township in Oil Rubbed Bronze OH	  

1. Flush Mounts light seating areas, balconies or porches with lower ceiling heights.

2. Hanging Lanterns hang over outdoor dining areas or on porches with high ceilings.

3. Wall Lanterns commonly light exterior doors for increased visibility and safety.

4. Post/Pier Lanterns are often used to light the end of a driveway or front yard. They can also be used on top of a deck or fence post (not illustrated above).

5. Spot Lights allow you to highlight features in your yard with uplighting, shadowing or grazing techniques.

6. Well Lights are commonly used in uplighting and grazing techniques but can also be used for shadowing.

7. Hardscape Lights highlight larger structures such as built-in seating, deck or fence rails or retaining walls.

8. Deck Lights are mounted to deck posts, pergolas or gazebos to light the space perimeter.

9. Step Lights guide foot traffic, especially where there is a change in elevation.

10. Path Lights illuminate a walkway.

HINKLEY LIGHTING: 5. 3W LED Cast Aluminum Spot Beam 6. 50W Brass Well Light 7. Nexus Small Aluminum Hardscape Deck Light 8. Hardy Island Cast Brass Round Eyebrow Deck Sconce 9. Luna Zinc-Aluminum Alloy LED Step Light 10. Atlantis Natural Cedar and Aluminum LED Path Light

There's more to landscaping than grass and stone.

When it comes to creating your dream yard, there's not much we can't do. We're experts in the little things like handcrafted custom masonry and the not so little things, like pools and play areas. And with our comprehensive landscape design and build solutions, you'll never have to settle for the ordinary, regardless of the size of your space.

If you're thinking about transforming your space, before you do anything, give us a call. You'll be glad that you did.

Call us at 519.727.4769 or visit us online at landscapefx.com





LP

Larry Pickle, A.B.R.
Sales Representative



Do you know the value of your home? I do.
Contact Larry Pickle for your **FREE** evaluation today.

Cell: 519.791.9091 | Office: 519.944.5955 | Larry@LarryPickle.com | LarryPickle.com




“Timeless,
classic DESIGN.
The ultimate
form of
sophistication.
It’s all in the
DETAILS.”
Danielle Nicholson

Full spectrum
interior design.

dN
danielle nicholson design
519.564.9695

**Introducing
#T2BYOUTHAMBASSADORS!**

GET INVOLVED!




**YOUTH
Can Make A
Difference**

We are looking for passionate youth aged 10-17 who would like to make a difference in Windsor & Essex County. If you are interested in being a member of the **#T2BYouthAmbassadors Committee**, email us at **info@t2b.ca**.

Proceeds from the **#T2BYouthAmbassadors** Committee will benefit the **Ronald McDonald House Windsor** and **T2B Paediatric Programs**.

Stay Tuned with **T2B** for more exciting events and initiatives!



Life at
SEVEN LAKES
CHAMPIONSHIP GOLF & ESTATES

Wide open spaces & views!
Close to everything you love about city life but set in a neighbourhood of nature in its finest form.
Luxury residences and townhomes, custom finished in every detail.

Contact one of these quality home builders today and start planning your dream home.

Now building in Phase 2.
Get your lot today!

<p>Townhomes</p> <p>GIN TAR HOMES fairwaysatsevenlakes.com info@gintar.ca</p>	<p>Single Family Homes</p> <p>Lakeland HOMES LTD. 519-890-3223 lakeland-homes.ca</p>	<p>Single Family Homes</p> <p>LAPICO CUSTOM HOMES lapicohomes.com dorislapico@cogeco.ca</p>	<p>Vacant Lots DEVELOPER</p> <p>SEVEN LAKES HOMES 519-566-7636 www.sevenlakeshomes.net golf@meoassociates.com</p>
--	---	--	--




Celebrating
50 years
of business excellence!

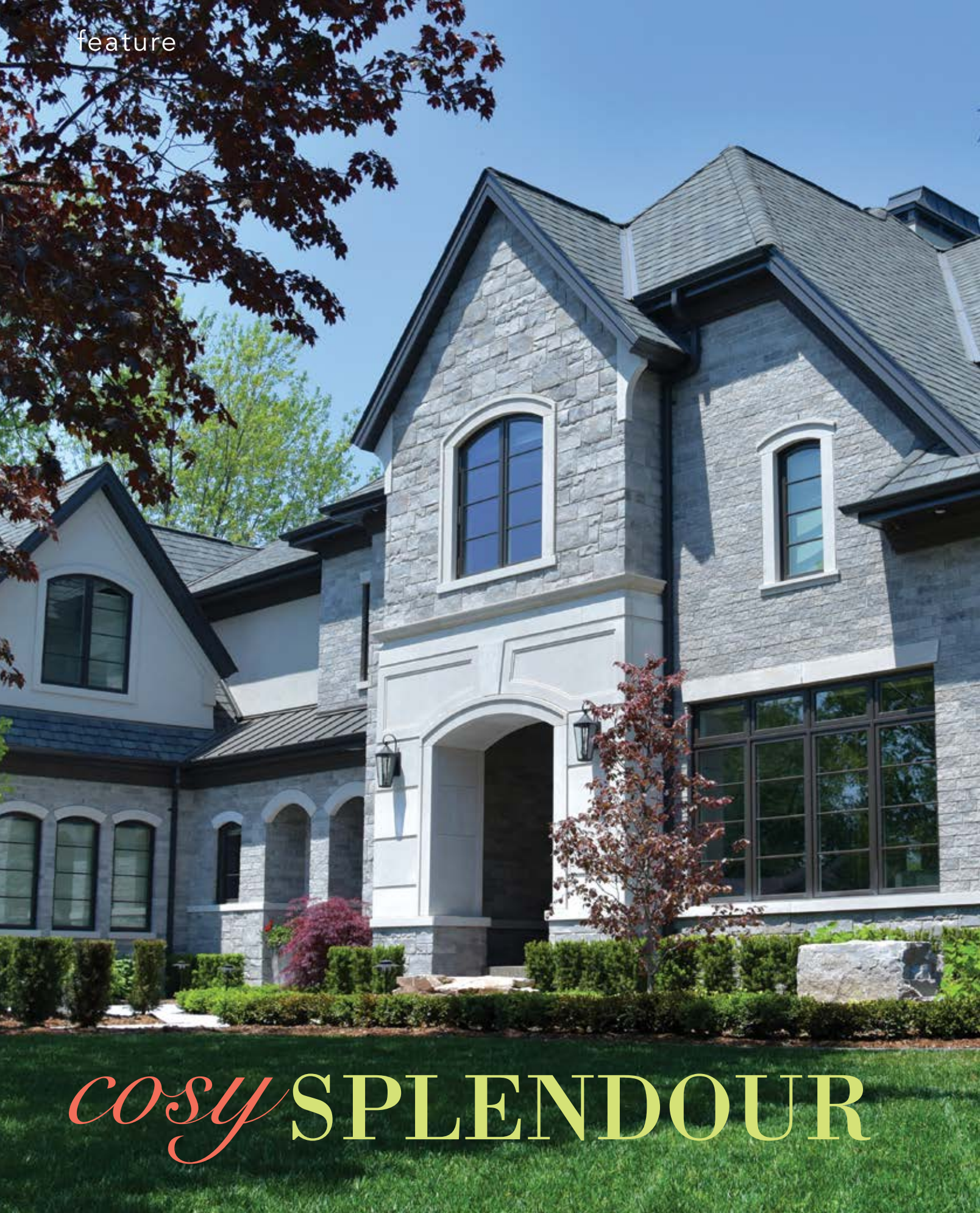


ACTUAL PROJECT

ROMA TILE
CARPET • GRANITE • HARDWOOD

Your **ONE-STOP** destination
for Granite / Quartz
Countertops & Flooring

2577 Howard Ave, Windsor 519-966-5721



cosy SPLENDOUR

RIGHT: The home at night defines cosy splendour. **BELOW:** The foyer of the home showcases art deco doors. **BOTTOM:** Ryan Pawluk Lakeshore Landscaping did the softscapes and Gino Piccioni from Timberland Homes was the totally “unflappable” builder who made the homeowner’s vision a reality. **OPPOSITE:** The significant limestone wrapping gives the home strength and presence. “We are fortunate to work with clients who let us do these kind of quality details,” says Piccioni.



Ryan and Gino

STORY **NANCY BELGUE**
PHOTOGRAPHY **STEVE POMERLEAU**

Every home’s story is special and this home is no exception. Full of twists, turns and groundbreaking design challenges, this is a home that quietly demands to stand up and be counted.

The first step on this and any homebuilder’s journey is finding the perfect building site. And this homeowner, who’d always loved the South Windsor neighbourhood where he’d grown up, couldn’t imagine building anywhere other than on the shady, tree-lined streets filled with childhood memories. So, when a large double lot backing onto The Roseland Golf Club became available, he and his wife knew they’d found the ideal location for their passion project.

The couple had definite but somewhat differing visions: he wanted modern and contemporary; she wanted cosy and traditional. To say they successfully negotiated a winning compromise would be understating their achievement. The house that came to be blends the best of both visions: cosy and traditional with contemporary splendour.

“We found a layout we liked online,” remembers the homeowner. “And we took it to an architect friend who made blueprints. When we put it out to tender with three builders, **Gino Piccioni of Timberland Homes** picked up on the fact that my wife wasn’t completely sold on the exterior design. Gino took it upon himself to ask his architectural designer (**Allan Djordjevic of ADG & Associates Inc.**) to take a look and came back to us with a more traditional, timeless re-design that really spoke to what my wife was looking for. That Gino took this initiative really impressed us and was one of the reasons we chose him as our builder.” *Continued on page 40*

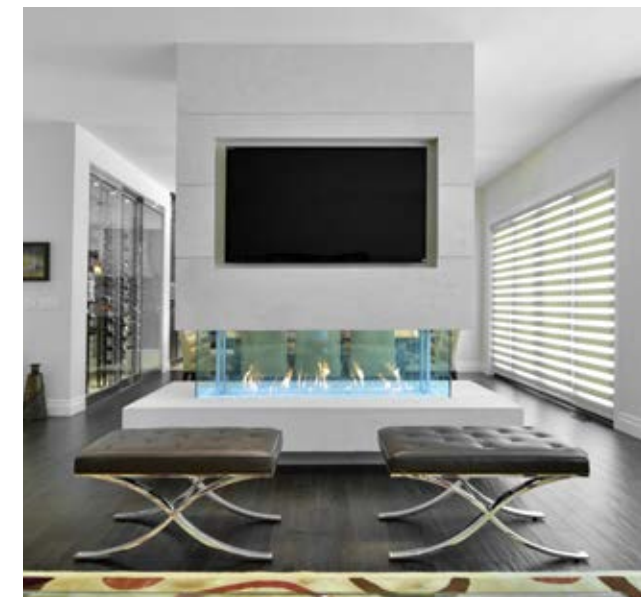


This kind of dedication and attention to detail is also why the house succeeds on so many other levels. “It took three-and-a-half months just to find an exterior stone and brick in a colour combination the two of us agreed on,” says the homeowner. “We really wanted the windows to pop and after lots of friendly, over-a-beer discussions with a few architect friends, we arrived at what we think is the perfect solution.” Having settled on the design and chosen the exterior finishes,

the interior demanded even more one-of-a-kind engineering and construction feats. The homeowner wanted a “wine wall” instead of a traditional wine cellar. The resulting floor-to-ceiling wall comprised entirely of glass was something of a first for Piccioni and his crew. “Cooling the wine wall and ensuring it is UV protected with thick enough glass was a huge challenge,” says the homeowner. “**Al LaMarre (Bay-View Glass & Mirror Ltd.)** was amazingly helpful and



Allan Djordjevic



A unique wine wall, in place of a more traditional wine cellar, was an engineering challenge for Piccioni and his crew.



solution-oriented. Because glass is not an insulator, we also had to source a special cooling unit that would hold a steady temperature. Gino was totally unflappable. He was always willing to roll with the punches.”

Another feat of engineering and design is the living room fireplace (**Scotts Fireplace**). “Gino had to reconfigure the room upstairs to accommodate the fireplace design,” says the homeowner. “It is the first of its kind in Windsor and it required a specific exhaust system. It had to draw air from the roof so it was necessary to add a chimney where none existed. Another challenge was finding the right material to clad it. Not having done it before we didn’t plan for the fact that there was no load bearing at any point and that whatever we were going to clad it in had to be suspended from the ceiling. The original plan was to use stone but during a lunch with **Jerry Kavanaugh** and **Stephen Berrill** of **ADA (Architectural Design Associates Inc.)** it was pointed out it might pull my ceiling down! Gino connected me with **Dekko Concrete** and they were able to clad it in something that is beautiful and light. We are very, very happy with it and enjoyed working with a local expert who was so completely impressive.”

The **Frank Cremasco**-designed-and-built chef’s kitchen was another must-have. The homeowner is a serious home cook who loves to be in the kitchen. “Frank and Alana Cremasco (of **Frank Cremasco Fine Cabinetry**) were incredible,” he says. The homeowners found their stainless steel appliances at **Reis Appliance Ltd.** “Dennis Reis

Continued on page 42

TOP LEFT: The painting above the fireplace in the dining room is an original piece the homeowner purchased in Montreal. It is reminiscent of the Group of Seven. **TOP RIGHT:** The first-of-its-kind fireplace was featured on the cover of *Hearth & Home Magazine* for its visionary design. **OPPOSITE, TOP:** The kitchen may be a beautiful, sleek room but is also the heart of the home. **BOTTOM LEFT:** Allan Djordjevic of ADG & Associates Inc. helped design the home’s exterior. **BOTTOM RIGHT:** The living area with its serene views of The Roseland Golf Club.

feature

came out both to consult and then install our kitchen appliances and was superb,” states the homeowner. “And he will personally service all the appliances. It was one of the reasons I wanted to work with him.”

One of the most show-stopping pieces of furniture in the home is the handcrafted, solid-wood table that was custom built for the homeowners by local artisan **Todd Lindsay Designs**. Created from a single slab of rare African Waterfall Bubinga wood and featuring a live edge, the table is a work of art that symbolizes the homeowner’s total commitment to quality, design and detail. It also fits the homeowner’s friendly, family-oriented lifestyle. “We enjoy entertaining,” he comments. “I love to cook and offer hospitality. The more the merrier.”

The four-season room, which started as a covered patio, affords the couple ample opportunity to indulge that passion. Because

Continued on page 44

RIGHT: The pool is by Santarossa Pools.
BELOW LEFT: The four-season room offers a fully equipped kitchen and is the site of many family gatherings. **BELOW RIGHT:** The outdoor fire pit is a dramatic gathering place.



The fireplace, heated floors and exterior access make the four-season room the place where the family spends most of its time. **BELOW:** The folding door transformed what was once a covered patio into the home’s most-used space, designed and manufactured by Martindale Windows & Doors Inc.





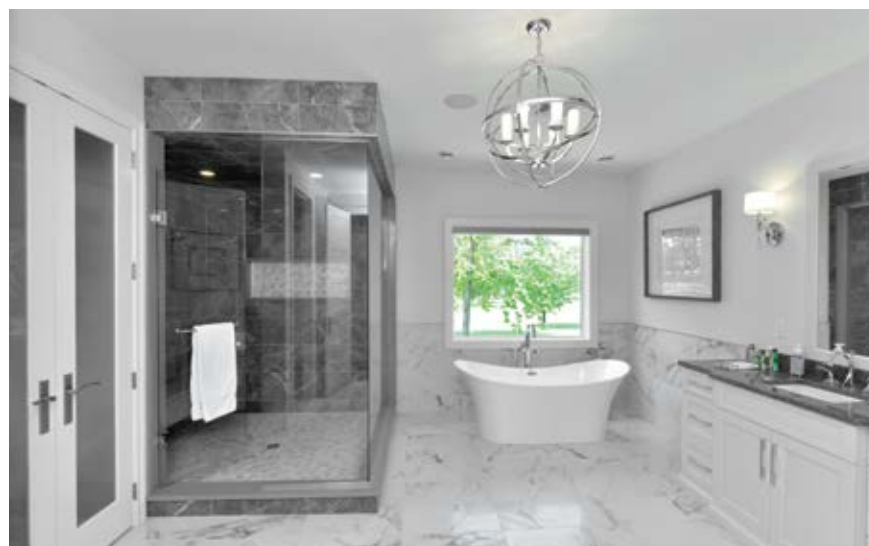
they wanted more use from the room and needed a way to close off the opening in the colder weather, the homeowners consulted Scott Martindale (**Martindale Windows & Doors Inc.**) who helped design a multi-folding panel door that runs the entire length of the room. Piccioni and **Tom Bradd (Tom Bradd Heating and Cooling Co. Ltd.)** added in-floor heating, put a heating/cooling unit in the wall and added a huge fireplace (**Forest Glade Fireplaces**). “This room and the kitchen are where everyone hangs out,” comments the homeowner. In the summer months the door opens to allow access to the gorgeously landscaped backyard (**Lakeshore Landscaping**) and pool (**Santarossa Pools**).

“I think one of the biggest keys to making this home work perfectly for our family was finding a layout that fit the way we live on a day-to-day basis,” reflects the homeowner. “We wanted it to feel like a home.” Mission accomplished. **OH**

ABOVE: Bedding in the peaceful master bedroom is from Beddazzle. **RIGHT:** The soaker tub was situated with views to the golf course. It is the perfect backdrop to the serene colour palette.

LOCAL SOURCE GUIDE

• AC Landscaping & Design • ADG and Associates Inc. • Architectural Design Associates Inc. • Beddazzle • Patene Building Supplies Ltd. • Creative Homescapes • Coulter's Furniture • Cunningham Sheet Metal • Dekko Concrete • EMCO Waterworks Corporation Windsor • Forest Glade Fireplaces • Frank Cremasco Fine Cabinetry • Granite Design Works • Lakeshore Landscaping • Made To Shade Window Coverings Ltd. • Martindale Windows & Doors Inc. • Palazzi Rugs & Carpets • Pillar Masonry • Pinpoint Carpentry Inc. • Quinn Roofing Solutions Inc. • Reis Appliance Ltd. • R. Gendreau Plumbing • Rose City Tile Inc. • Timberland Homes • Todd Lindsay Designs • Tom Bradd Heating and Cooling Co. Ltd. • Santarossa Pools • Scotts Fireplace • Shkodra Stucco



unique
ONE OF A KIND

Palazzi
Oriental Rugs Inc.

NOW AVAILABLE
Green Rug Cleaning
519.972.7174
3616 WALKER RD WINDSOR
WWW.PALAZZIRUGS.COM

LIFESTYLE BY DESIGN

ADG ARCHITECTS INC.
RESIDENTIAL DESIGN CONSULTANT

www.adgdesigns.com 226.347.9439 248.842.8407

Now offering
Outdoor Solutions
Outdoor structures by Corradi

made to Shade
window coverings

Windsor - London - Toronto
519-739-9797 | www.madetoshade.ca

decorating

OUTDOOR STYLE

STORY JACKIE GLASS



It's time to reclaim our outdoor spaces and transform them into easy-living summer rooms that transition

seamlessly from inside to out. If you're like me and enjoy making the most of our short fair-weather season, you already know the importance of creating outdoor living spaces that are perfectly situated, attractive, comfortable and easy to maintain. It all comes down to clever planning and smart buying.

Plan, Budget & Measure

My best advice as a designer is to budget and plan before you buy. Just like you would when designing an interior space, determine a style and how you want to use your outdoor space. Once you've determined your style and needs, grab a tape measure and measure your outdoor "rooms," taking location into consideration such as the proximity to the kitchen for a dining area, sun/shade exposure and the quietest spot in the garden. Make some notes then look for inspiration to get an idea of style, scale, construction, availability and pricing before heading out to buy.

Select Your Type

Choosing the right type of outdoor furniture to suit your style, location and lifestyle all starts with knowing how and where you plan to use it. For small, protected spaces like a covered balcony or porch that aren't exposed to heavy rains or high winds, you can consider small-scale, lightweight pieces. Heavier, full-size, more durable furniture should be considered

for large, unprotected outdoor areas that get used regularly for entertaining and dining.

Outdoor furniture will inherently be exposed to much more abuse than indoor furniture by both people and the elements, so invest in the best quality, construction and materials you can afford. Consider the following for the most durable and popular types of outdoor furniture available today.

Wood: For a relaxed, rustic look, hardwoods such as teak are naturally sturdy and offer high resistance to the elements. Wood furniture is best stored indoors during the winter months.

Iron: Iron patio furniture lends a traditional look, is almost impossible to damage and won't topple in high winds. Add cushions for comfort and protect with rust-resistant paint.

Aluminum: Durable powder-coated aluminum sets give a modern look, require minimum maintenance and are lightweight for easy portability. Most are stackable for easy storage.

Steel: For a contemporary design theme, stainless steel furniture is a bit lighter than iron and offers an appealing lustre that resists corrosion. Highly durable and easy to maintain and clean.

Wicker: Offering a romantic natural look, lightweight yet durable natural wicker furniture is typically made from bamboo, cane or rattan. All-weather wicker is made from synthetic resin fibres woven around the frame, and then coated with durable weather-resistant finishes.

Plastic: 100 per cent recycled, high-density polyethylene furniture is non-porous, wipes clean with soap and water and is available in a wide range of fade-resistant colours. This material can be left outdoors year-round. **OH**



DEDON:
Barcelona Chair



DEDON:
SeaX Table



CRATE&BARREL: Ventura Round 3-Piece
Sectional with Sunbrella Cushions & Round,
Tempered-Glass Coffee Table



CB2: Sun Shade



CB2: Ixtapa
Lounge Chair



HAUSER: Satellite
Round Cocktail Table
in Sunset Orange



WINDSOR AND ESSEX COUNTY'S CHOICE FOR
QUALITY RESIDENTIAL LANDSCAPE
DESIGN AND CONSTRUCTION

A Creative Team assuring
modern ideas and proven results



Ryan Pawluk

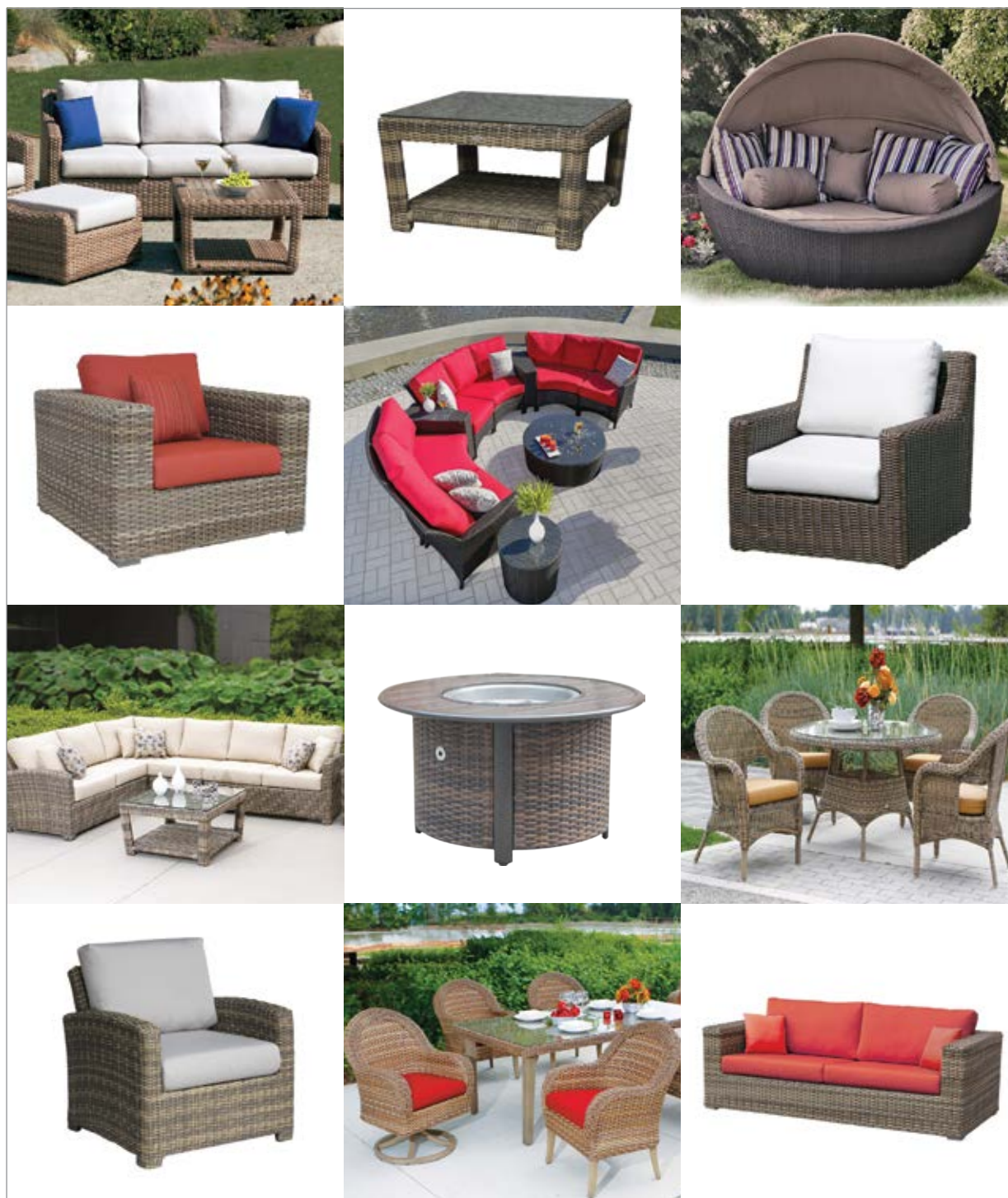


Andrea Pawluk



Matthew Pawluk

3110 Jefferson Blvd., Windsor, 519 974 2000
lakeshorelandscapingwindsor.com



PHOENIX
Home & Garden

1245 Lauzon Rd. 519.945.2001 phoenixhomeandgarden.net shopphoenix.ca

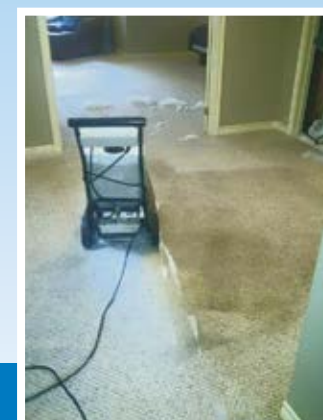
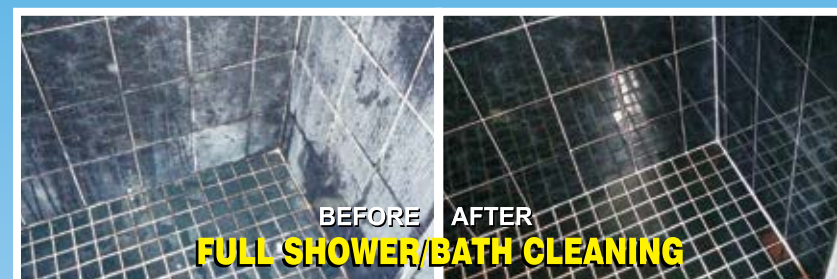
TILE & GROUT CLEANING & COLOUR SEALING

Celebrating
17 years
ANNIVERSARY
in business!

Change The Colour Of Your Grout

**FREE
DEMO!**

We Clean Tile & Grout Better Than Anyone Else...Guaranteed!



DRY FOAM CARPET CLEANING

- Fast Drying & Deep Cleaning
- Carpet & Upholstery
- Area Rugs • Mattresses

Call for a **FREE**
no-obligation estimate

519-966-0700



Visit our website for more
photos and information
www.thenulook.ca

COLOUR SEALING

Seal grout lines - it adds super protective coating. Ideal for grout lines that are not cleanable or have become discoloured. Available in any colour.

- Shower Restoration
- Full Cleaning • Resealing
- Grout Repair • Re-caulking
- Full Removal & Re-grouting

CLEAN & RESEAL

All natural stone and manmade tiles

- SHOWERS
- COUNTER TOPS
- ALL FLOORS

LEATHER FURNITURE

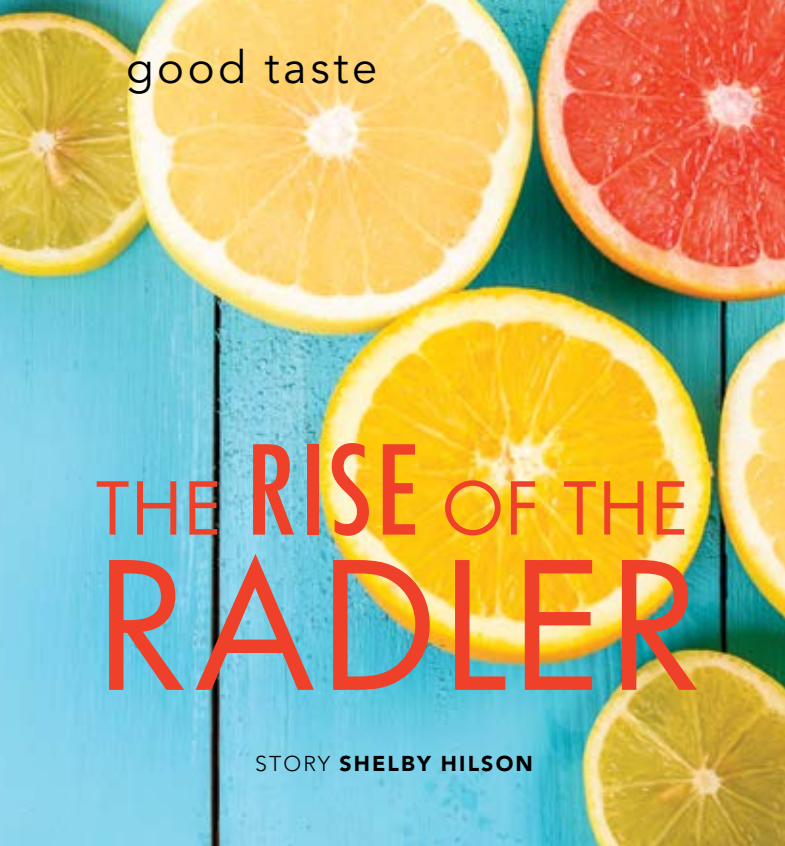
REPAIR • RE-DYEING • REPLACEMENT

- Full Colour Change
- Repair Wear & Tear, Pet Damage, Ink Marks, Nail Polish, Stains, Fading and more!

Part replacement on-site repair is available. Full upholstery, 150 different leathers to choose from.

TOM TAR is the proud owner of NULOOK for the past 17 years. Serving Windsor, Essex County & Chatham Kent.





Last summer, at a craft beer festival (attended for my husband’s sake), I discovered my calling in the world of beer.

Although I’ve always appreciated a cold brew after a hot day of yard work or a game of soccer, it’s usually followed up with a glass of red wine or a tart cocktail; or at least it was, until I was introduced to a new summer favourite: the radler.

A radler is a mixture of light beer plus juice, sparkling juice or soda. The name comes from the German word for “cyclist” and its creation is presumed to relate to the desire for more refreshing, less-alcoholic beverages by long distance cyclists. Traditionally a 50:50 mix of beer and sparkling lemonade, a combination referenced in texts dating back to 1912, the radler is still in its infancy stage here in North America.

It won’t be for long though. Craft breweries everywhere are launching new radlers for the summer season and national brands are jumping on the bandwagon too. Coors Light has released a Citrus Radler; Moosehead a Light Lemonade Radler and Rickard’s a grapefruit radler.

My first taste was of Amsterdam Brewery’s Blood Orange Sweetwater Squeeze Radler, a combination of beer, blood orange juice and a house-made soda. Their first limited run in 2014 sold out, but will now be more widely available across Canada. I’ve since enjoyed Waterloo Brewing Company’s Grapefruit and Lemonade radlers, which are equally refreshing and perfect patio drinks.

There’s some justified concern in the industry that the sweet nature of radlers will shift them away from the beer category and into the “alcopop” or “cooler” category. Given the history of large food and beverage companies increasing sugar content to widen appeal, this would come as no surprise. It is, however, a great reason to support our local craft breweries whose creative brews boast the ideal balance of sweet and malty.

Radlers on my shopping list this summer:



Central City’s
Red Racer



Kichesippi’s
Grapefruit



Mission
Spring’s
Lemon Ginger



Parallel 49’s
Tricycle
Grapefruit



Waterloo
Brewing
Company’s
Grapefruit



Amsterdam
Brewery’s
Sweetwater
Squeeze
Blood Orange



MAKE YOUR OWN:

You may not be a brewmaster, but you can create a tasty summer drink that everyone will enjoy, starting with this simple formula.

2 parts light beer (try a local pilsner, light ale or pale ale)

1 part club soda

1 part juice (try orange, lemon or grapefruit) **OH**

Share your own recipes with us:
[facebook.com/OurHomesMag](https://www.facebook.com/OurHomesMag)

The Legal Edge Team



Amanda & Philip



Nicole, Ethan & Kris

“When you’re in the business of designing custom luxury homes, you’re bound to be exacting about the details of your own home. We loved working with Mark and Tina because they understood this. They were just as meticulous about the details as we were; they listened to what we were looking for and they were endlessly patient with us as we weighed alternatives. With their extensive knowledge of the local market, they were quick to identify the kinds of homes and neighbourhoods that might interest us. Their “legal edge” also gave us the confidence to know that all the details of the transaction would be properly addressed. We’ve worked with Mark, Tina and Donna on several projects and, in each case, they’ve been great to work with. When we’ve recommended them to our friends, we’ve always received great feedback. That, more than anything else, is why we’re confident recommending them to others.”

Amanda and Philip Fernandes
Custom Residential Designer;
www.pfernandesdesigns.com, 519.990.9115

“We would like to express our deepest gratitude to Tina Pickle and Mark Eugeni for making the buying and selling process totally stress-free. They were knowledgeable, enthusiastic, and professional from start to finish. After months of looking with our family, friends and on our own, we hired Tina and Mark and they found the perfect house for us quickly and in the exact location we wanted that we never would have found on our own. We were 100% satisfied, now live in our dream house, in a great neighbourhood, we couldn’t be happier. Selling our older home was an even easier process with The Legal Edge Team; two days and sold. It was really reassuring to know that we were being represented so competently and professionally. There really is a Legal Edge and would recommend them to all.

Thanks again Tina and Mark and Donna.”

Kris Kobielski, Nicole McGhee and son Ethan
Owners of Artisan Photography
www.artisan-photos.com

2015 #1 SALES AGENT 10 YEARS IN A ROW

2006, 2007, 2008, 2009, 2010, 2011, 2012, 2013,
2014, 2015 – #1 LISTING AGENT for 9 YEARS!

Whether **BUYING** or **SELLING**, put your trust in the legal knowledge of a lawyer, the success of a complete marketing campaign and the benefits of a professional sales team.



Selling Windsor...
Beyond Expectations
519.250.8800

Mark A. Eugeni, B. Comm.,MBA, JD
Sales Representative
mobile: 519.796.8454
sales@markeugeni.com
www.markeugeni.com

Tina Pickle
Sales Representative
mobile: 519.791.6626
sales@tinapickle.com
www.tinapickle.com

Not intended to solicit any properties currently for sale and all buyers and sellers are advised to obtain independent advice before relying on any information herein.

* Sales Representative



Richard Pursel



THE CREATIVE Spark

Richard Pursel of Lionheart Interiors has walked the talk “to thine own self be true” from earliest memory. “I’ve had a creative slant my whole life,” he says.

“When I was young, it was expressed through music and art. I played keyboard from the time I was six years old.” A self-taught musician, Pursel remembers when his parents bought him a small keyboard that he would play in his room for hours, or jam with a cousin, experimenting with sound and different styles of music. He joined a band when he was 16 and before long was getting paid to play in places he needed written permission to get into. “Music has always been a great source of inspiration for me,” says Pursel. “And it has given me so much. It was through music that I met my wife Lorree. She came to audition to sing with the band, but the real cool part is that we connected so well we dissolved the band and formed a duo called Heart &

Soul. And that’s when the music “gig” really took off.” Lorree and Pursel soon became an in-demand musical duo, performing at numerous venues as well as many weddings across Windsor/Essex County.

“I loved the music business,” Pursel remembers. “But I was also working in a men’s store at the time and found that fashion was another great creative catalyst – and it still is.”

As so often happens, with highly imaginative people, the creative spark ignites and re-ignites in different ways and at different times. “After 13 rewarding years in retail I found myself looking for a fresh outlet,” Pursel says. The next step might have seemed obvious to those who knew the couple at the time. “Since my wife and I married,



we’ve renovated and decorated three homes of our own,” Pursel recalls. “Friends asked us where we found our décor items and design ideas, and their encouragement and our passion was the spark I needed to go out on my own.”

The Pursels started Lionheart, their design business in 1991. Originally, working freelance from his home office, Pursel began building his steadfastly loyal clientele. The demand for both his designer’s eye and an appetite for the unique products he was able to source led to the launch of the Lionheart Collection retail store in 1999. “I had travelled extensively and became aware of trending design all over the world, and I became motivated to provide Windsor and Essex County with cutting edge product not previously available. And with my extensive retail background I realized the time was right to open Lionheart Home Collection.”



Now in its third location at 220 Edinborough St., the Lionheart retail space is 5,500 square feet of artfully done displays, full-room vignettes and exclusive lines of furniture, accessories and art. Three design professionals have joined Richard and Lorree on staff.

There are two sides of the business: the retail store and the custom interiors. The space is fabulous and it is here that both retail customers and design clients find the higher-end, fashion-forward designer products that Pursel carefully curates. “Our designers have a vast and ever-changing selection of products at their fingertips,” Pursel explains. “It makes for a gratifying synergy. When we begin work on an interiors project it generally spans several months. So, when we design a client’s home we order products for our showroom with their needs in mind. Then, when it’s time for placing the accessories, we have the perfect items instantly available.”

Pursel’s personal design philosophy is to make certain the finished product reflects the client’s personality and lifestyle and is not a cookie-cutter, one-size-fits-all design. “A lot of time and effort goes into finding out how the client lives and what their tastes are,” he emphasizes. “We can, and will take on any project. From a single window treatment to a complete home design.”

When reflecting on Lionheart’s success, Pursel is philosophical. “I feel I am very blessed. I attempt to be genuine and I seem to attract a like-minded clientele. I am very fortunate to have a talented



and conscientious staff that work so well as a team. Some of my employees and clients have been with me more than 15 years and many come back again and again to do renovations or additions or to refresh their décor. They’ve even been known to ask me what colour towels they should buy! It seems that once I am in their life I am there forever.” **OH**

STYLE IDEAS TRENDS

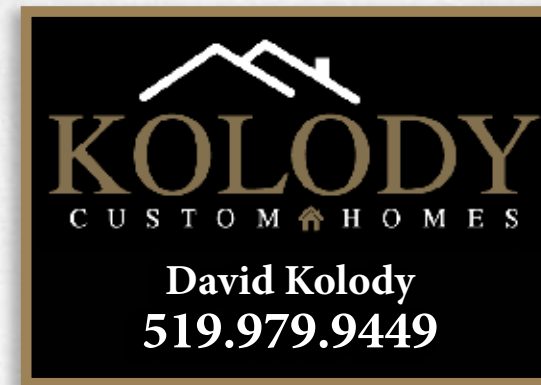


Local Homes, Local Retailers, Local Trades.

OUR HOMES helps you find exactly what you need for your home and it's **just around the corner.**

ourhomes

Your local magazine about everything home.



David Kolody
519.979.9449



Building with integrity.

Exclusive home sites in the Heart of Tecumseh,
nestled into the serene Lakewood Park.



kolodyhomes.com | kolodyjake@aol.com

KITCHEN WHITE

STORY **YANIC SIMARD** | PHOTOGRAPHY **GILLIAN JACKSON**



PHOTO: BRANDON BARRE

The coveted white kitchen: it may sound strict, or even boring to some, but if you start with a solid base, this classic scheme actually leaves lots of room to add personality, drama, and yes, even colour. Read on to learn how to do a white kitchen the right way – your way.

Never Run-of-the-Mill

Cutting corners with your millwork will usually show in the long run: good solid cabinets in a classic style can always be repainted or touched up, while low-end or trendy options will grow dated much faster as materials are dinged or peel. A good investment here will anchor the space for years to come.

TRY: Flat slab drawer/door fronts for a sleek modern look, with a lacquer or ultra-matte finish that highlights the beautiful simplicity. For a balanced transitional appeal, opt for shaker doors with a simple frame-like border, which can then be dressed to look more traditional or more contemporary with hardware.

Hard to Forget

Often, cabinet hardware goes overlooked, but good knobs and pulls can be the jewelry of the kitchen, so don't be too quick to settle for plain factory options. I often like to add variety by using different styles on the lower and upper cabinets, such as brass pulls and glass knobs – but play it safe with just two styles.

TRY: Brass or copper cabinet pulls for warmth, gem-cut glass or crystal for boutique elegance, or fun, patterned knobs for a trendy indulgence. To go minimal, use knob-free reach-in fronts, or try inset finger-pulls for a traditional upscale touch.



BALDWIN HARDWARE: 1. Swarovski Crystal Cabinet Knob in Polished Brass 2. Severin Fayerman Knob in Polished Brass 3. Cup Pull in Polished Brass



Contrast Control

A colour pop isn't the only way to make a statement – lighting from unexpected sources, such as under-cabinet light pucks, floating shelves with LED strips, or inner-cabinet lights (with a windowed door) add interest and functionality. Consider mixing in a darker element such as espresso floors or smoky, stone counters for a pleasing contrast, and finish the scheme with a dimmer to change the mood at whim like a filter on Instagram.

TRY: Oversize pendant lights (like the Mason Wide Pendant from Arteriors) to add evocative points of interest without a single new hue.

Colour Chameleon

The white kitchen endures because it's so adaptable: a strict palette of neutrals for the fixed finishes still leaves room to update and accessorize the look endlessly. A hot trend for 2016 is to mix white with warm off-whites for a subtle richness, but a crisp white will work with virtually any favourite hue. When in doubt, keep the major investments neutral and add spice through non-committal accents.

TRY: Colourful tea towels (like this Bumble Bee Dish Towel from CB2), containers or appliances (like a KitchenAid stand mixer in Blue Willow), and be sure to leave room for a natural element like fresh flowers or fruit. Choose glass inserts for a few upper doors to let beautiful dishes and glassware add even more personality.



WHICH KITCHEN WHITE IS RIGHT?

Try one of these Benjamin Moore hues to suit your white kitchen style.

Chantilly Lace (2121-70): A long-time favourite, and an ultra clean and fresh white tone. This is a safe bet to avoid difficult-to-match undertones and just a breezy all-over colour for walls, cabinetry – everything.

Cotton Balls (OC-122): A faintly yellow-tinted off-white with a heritage character that works for elegantly traditional kitchens, or paired with a cleaner white to add sophisticated interest in an otherwise stark modern space. Try it for just cabinetry, where it will also hide a few fingerprints.

Distant Gray (OC-68): A barely-there grey, with ashy crispness that grounds bright white or offsets warm woods. Try it for just the walls, especially paired with a veiny stone backsplash, to make the cabinetry look extra crisp.

Simply White (OC-117): Benjamin Moore's 2016 colour of the year, and a warm just-off-white. Try this for painted floors or wood panelling (on, say, the front of an island) to give a cottage-inspired feel, or use it on walls with warm wood accents like exposed beams or floating shelves. **OH**

directory

OUR HOMES attracts the area's finest businesses to advertise in our pages, and utilize our unparalleled distribution and coffee-table appeal to market their products and services. We're making it easier for you, our readers, to become educated as you plan your home- and real estate-related purchasing decisions. View these business ads online at ourhomes.ca/windsor. The listings below are organized alphabetically by industry.

APPLIANCES

The Appliance Shoppe, 11

ARCHITECTS/ARCHITECTURAL DESIGN

ADG Architects Inc., 45
Philip Fernandes Custom Residential Design, 8

ARCHITECTURAL MOULDINGS

Ledoux Interiors / Exteriors, 17

ART/ARTISANS/GALLERIES

Nancy Johns Gallery, 29

AWNINGS/TENTS/SHELTERS

Made To Shade, 45
Windsor Tent & Awning, 59

BBQ'S & GRILLS

Forest Glade Fireplaces, 27

CARPET/TILE/UPHOLSTERY CLEANING

NuLook, 49
Palazzi Rugs, 45

CAST PLASTER/STONE/CONCRETE

Ledoux Interiors / Exteriors, 17

COUNTERTOPS/GRANITE & STONE

5 Star Designs Decorative Concrete, 29
Hamptons Stone & Flooring, 6
Palazzi Granite & Tile, 3
Roma Tile, 37

CUSTOM CABINETRY/DESIGN

Cremasco Fine Cabinetry, 13
Mastro Kitchen Studio, 19
Wayne's Custom Woodcraft, 63

CUSTOM FRAMING

Nancy Johns Gallery, 29

CUSTOM HOME BUILDERS

Coulson Design Build, 5
Evola Builders, 9
Imperial Homes, 2
Kolody Custom Homes, 55
Timberland Homes, 14&15, 61

DECORATIVE CONCRETE/STONE

5 Star Designs Decorative Concrete, 29

FINANCIAL/MORTGAGES/INSURANCE

Mortgage Intelligence, 59

FIREPLACE SURROUNDS

Ledoux Interiors / Exteriors, 17

FIREPLACES & STOVES

Forest Glade Fireplaces, 27

FLOORING

Hamptons Stone & Flooring, 6
Palazzi Granite & Tile, 3
Palazzi Rugs, 45
Roma Tile, 37

FURNITURE & HOME DÉCOR

Bertoni Chairs, 27
Essex Home Furnishings, 6
Lionheart Collection, 21
Nancy Johns Gallery, 29
Phoenix Home & Garden, 48
Urban Home, 10

GOLF COURSES

Rochester Place Golf Club & Resort, 7

HOME THEATRE

Audio Two, 8

INTERIOR DESIGN/INTERIOR DECORATING/HOME STAGING

Danielle Nicholson Design, 36
HouseWears, 59
Lionheart Collection, 21
Urban Home, 10

KITCHEN & BATH

Angileri Kitchen & Bath, 29
Cremasco Fine Cabinetry, 13
Mastro Kitchen Studio, 19
Wayne's Custom Woodcraft, 63

LANDSCAPING/LAWN & GARDEN

Bellaire Landscaping, 60
Lakeshore Landscaping, 47
Landscape Effects, 35
Ledoux Interiors / Exteriors, 17

LIGHTING

The Appliance Shoppe, 11

NEW HOME COMMUNITIES

Evola Builders, 9
Imperial Homes, 2
Kolody Custom Homes, 55
Rochester Place Golf Club & Resort, 7
Seven Lakes, 36
Villas at Forest Trail – Timberland Homes, 14&15
Valente Realty, 64

OUTDOOR FURNITURE

Bertoni Chairs, 27
Ledoux Interiors / Exteriors, 17
Phoenix Home & Garden, 48
Urban Home, 10

PAINTING & DECORATING

Decorating Ideas, 29

POOLS & SPAS

The Great Outdoors, 4

REAL ESTATE

Manor Realty – Mark Eugeni, Tina Pickle 32, 51
ReMax Preferred Realty – Team Brad Bondy, 11
ReMax Preferred Realty – Larry Pickle, 35
Valente Realty, 64

RUGS

Palazzi Rugs, 45

SPECIAL/NON-PROFIT ORGANIZATIONS

Transition To Betterness, 36
Windsor-Essex County Association of Realtors, 21

SUNROOMS

Seaton Sunrooms, 33

WINDOW FASHIONS

Decorating Ideas, 29
Made To Shade, 45
Vertical Concepts, 21

Windsor
Tent & Awning Inc.
SINCE 1996

We've Got You Covered!



\$120 OFF

Coupon

*Minimum \$1000 purchase. Cannot be applied to past purchases or sales. Expires July 15th, 2016.

Fabric Awnings
Door Canopies
Window Awnings
Retractable Awnings
Beautiful Fabrics & Colours

Visit our showroom
Mon – Fri 9 am – 5 pm
Saturday 9 am – 1 pm

1485 Lauzon Rd.
519-944-2271 or 1-866-860-9494
sales@windsortentawning.com
www.windsortentawning.com



INTERIORS BY

HOUSEWEARS

INSPIRED DESIGN SINCE 2004



Visit our website to view our latest projects and read our clients' testimonials.

www.housewears.ca 519.735.4003

The RIGHT MORTGAGE can save you thousands!

I offer customized mortgage solutions for your...

- ✓ first or next purchase
- ✓ investment or vacation property
- ✓ refinance or renewal
- ✓ debt consolidation

CALL ME TODAY FOR A CUSTOM REVIEW OF YOUR MORTGAGE SITUATION!

SARAH CARTER

Mortgage Agent

519-962-3012 | Sarah.Carter@migroup.ca





Beautiful landscapes
start with Bellaire Landscape.
Professional results.
Endless possibilities.



Bellaire Landscape has had the honour and pleasure of designing and building extraordinary beautiful landscapes for homes and businesses across the Windsor-Essex County area for over 15 years.

Bellaire Landscape's Customer Satisfaction – Working to Exceed Expectations!

With innovative and creative designs and a detailed implementation process, Bellaire Landscape is your ideal choice for professional landscaping. We work closely with our clients through every step of the landscape design and construction process to ensure that your goals are realized and financial budgets are adhered to.

Our reputation is backed by numerous local and provincial "Landscape Ontario Awards". Landscape creations, by our staff of certified landscape designers and skilled landscape installers, provide "YOU" with workmanship, quality and customer satisfaction.

Our reputation as a respectable, honest and reliable landscape company is of the utmost importance to us. That is why Bellaire Landscape Inc. is a member of Landscape Ontario Horticultural Association, Windsor Construction Association, Better Business Bureau and is fully licensed, bonded and insured. We are also proudly associated with the Authorized Unilock Contractor program, ensuring your landscape installations are completed with top-quality products and guaranteed workmanship.

Whether you heard about Bellaire Landscape Inc. through word of mouth, an advertisement, or from our website, we invite every potential customer to come visit us and spend some time discussing your landscaping ideas with our team. We will transform your yard into an oasis.

519.723.4948

www.bellairelandscape.com

landscapeontario.com
Green for Life!

UNILOCK®
Authorized Contractor



THE ESSENCE
OF TIMBERLAND
IS FOUND IN
EVERY DETAIL.

**TIMBERLAND
HOMES**

WWW.TIMBERLANDHOMES.CA

Your home. Your story.

finishing touch

TOOLS & MATERIALS:

Quikrete Anchoring Cement or Sakrete Fast-Patch Fast Concrete Repair
Non-stick cooking spray or Vaseline
Small containers to use as moulds, 2 per planter
Rubber gloves
Mask
Safety glasses
2 buckets
Water
Measuring cup or scoop
Bowl, bucket or container to mix small batches of cement
Wooden spoon
Trowel
Fine sandpaper
Succulents, to plant
Potting soil

HOW-TO:

- Fill buckets with water. Use one to add water to your concrete mix, the other to store your tools while you're working so the concrete mix doesn't harden onto them.
- Select your moulds by pairing containers to create your planter form. Visit dollar or second-hand stores to find shapes that you like.
- Coat the inside of the larger container and the outside of the smaller container with non-stick cooking spray or Vaseline.
- Measure and mix small batches of concrete according to the package directions. Work quickly, especially with the Sakrete, or the mix will start to set.
- Pour wet mix into the larger container and apply quick taps to the bottom and sides to level the mix and release any air bubbles.
- Press the smaller container into the wet mix, being careful to leave a minimum half-inch thickness at the base; hold for 30 seconds. After 30 seconds, if the form rises when you release the smaller container, weight it down gently with water or stones. If mix overflows, skim the excess with a trowel.
- Allow mix to set for 24 hours or more to minimize cracking.
- Once your concrete planters are completely set and removed from the moulds, give the tops a quick sanding with fine sandpaper.
- Add potting soil and your succulent plants and display!

NOTE: Any materials used in this project should not be used again for food preparation. Be sure to wear rubber gloves during the entire process while concrete is wet. **OH**



DIY CONCRETE SUCCULENT PLANTERS

STORY AND PHOTOS **TARA CHATTELL**

These little indoor planters have an earthy, industrial vibe and are perfect for trendy, low-maintenance succulents.



From contemporary to traditional...
and everything in between.

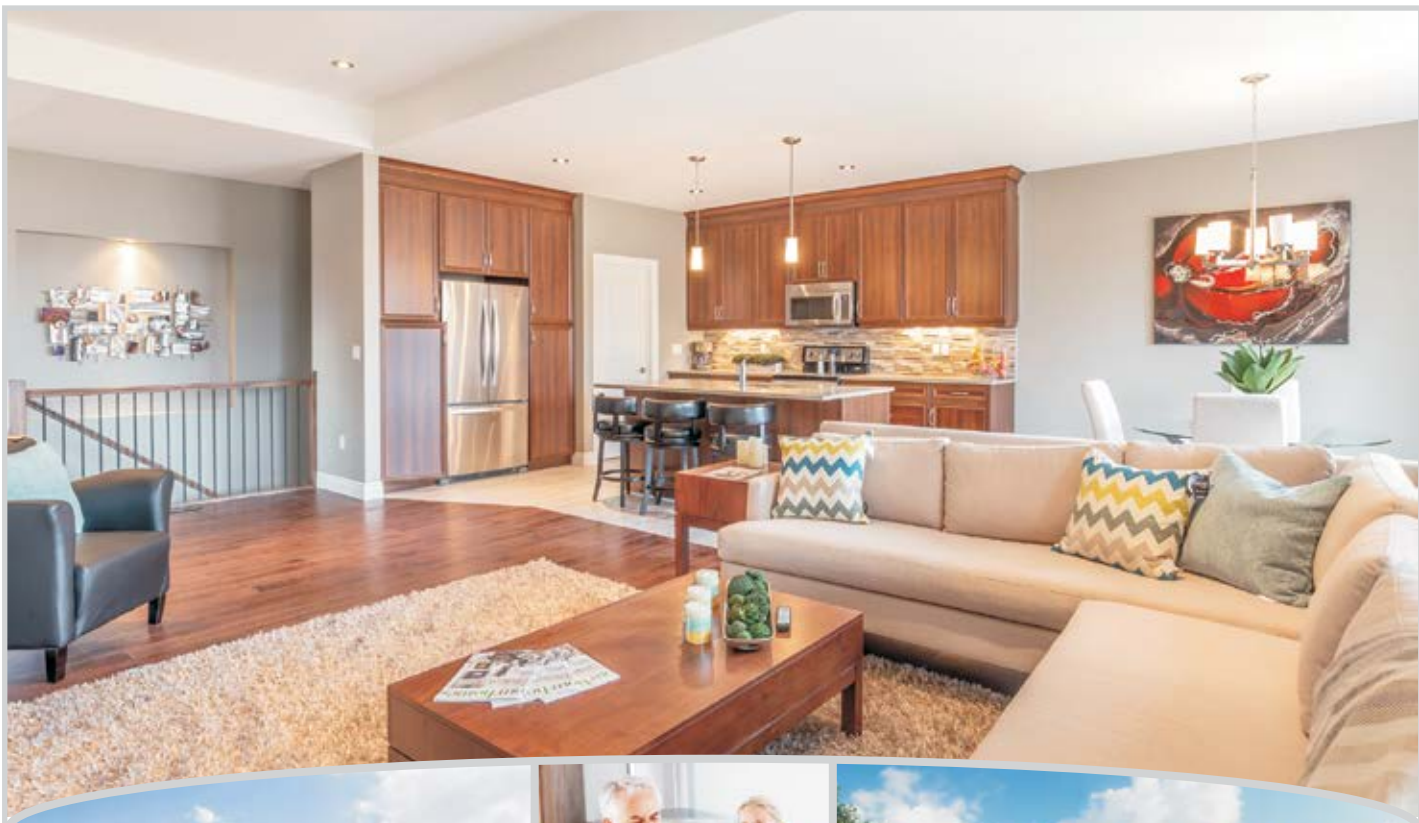


Celebrating 30 years!

Wayne's
Custom Woodcraft

Award-Winning Custom Kitchen Designs

2 North Talbot Road, Maidstone | 519-723-4141 | www.wayneswoodcraft.com



Luxury Is Our Standard, and You Deserve it...

Valente Home Development – building outstanding homes using the latest technology and high quality construction materials. Often considered upgrades by our competitors, we offer our customers a high level of standard finishes without extra cost. Valente Signature finishes include kitchen cabinetry with crown moldings, quartz countertops and mosaic backsplash, hardwood floors, upgraded plumbing fixtures and so much more! Our commitment to quality is backed by the unwavering promise of complete customer service and satisfaction. Our portfolio includes something for everyone – condominiums, townhomes or single family ranches, raised ranches or 2 storeys.

Please visit our Model Homes Open 1-4 pm each Wed., Sat & Sun

CONDOMINIUMS

RIVERTOWN
TERRACE
from \$192,900
Model 8475 Wyandotte E.

SINGLES & TOWNHOMES


THE VILLAS
AT HILLSIDE PARK
from \$244,900
Model 11905 Maitland

LUXURY TOWNS


— THE VILLAS —
ARBOUR GROVE
— TECUMSEH —
from \$299,900
Model 2278 Maitland



valentehomes.com