

The kitchen, complete with a unique, custom-made concrete island from Threshold Design.

A VIEW
TO A THRILL
IN DUNROBIN

STORY MORGAN BARNES
PHOTOGRAPHY JESSICA DEEKS

The solitary name is etched on a sign at the base of a sloping driveway covered in fresh white powder. As it turns out, Skyview, is both a homage to all things Bond, and an apt descriptor to the type of breathtaking view you can enjoy from the strategically positioned hilltop property. On the outskirts of the nation's capital, a modern and rustic hideaway can be found among the rolling hills of the quaint Dunrobin countryside. With white cedar shingles, corrugated steel, concrete and a Black Rundle Country Ledgestone exterior (**Merkley Supply Ltd.**), it's exactly the kind of sexy, sophisticated place where you'd find 007.

Continued on page 26



ABOVE: A unique table acts as a centerpiece to the great room. **RIGHT:** The back of the home boasts a picturesque entertaining area and a steaming hot tub.



For Jeff and Nancy McAllister, the home captures the essence of their adventurous lifestyle and love of nature. Entrepreneurs and nine-to-five escape artists, the couple built the home in alignment with their brand **Awaken Your Extraordinary, Inc.** The 2,400 sq. ft., custom home from **Brian Saumure** of **Maple Leaf Custom Homes** perfectly encapsulates their personalities. The home also earned Brian two finalist awards this year from the Greater Ottawa Home Builders' Association in the Custom Home and Exterior Living Space categories.

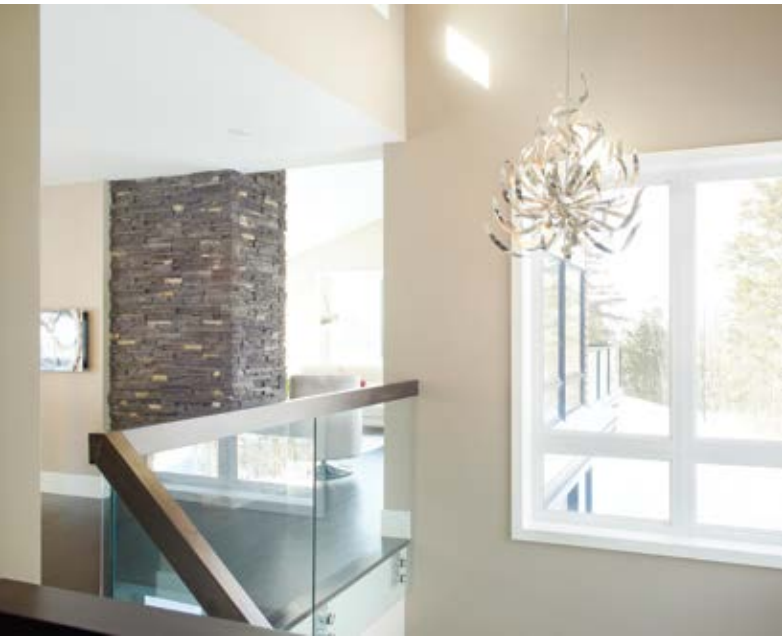
"Nancy and Jeff were very keen on enjoying the natural setting of the house," says Brian. "We effectively carved away a portion of the ridge and tucked the home against it. The main level of the home is essentially at ground level in the rear and on the second storey at the front; a reflection of Nancy and Jeff's affinity for the outdoors."

Brian's previous work, friendly collaborative approach and open-door policy is what sold the McAllisters. "We had so many picnics here during construction," says Nancy. "We loved the property and wanted to bring the outdoors in." With no window treatments on any of the sizeable showcase windows, the natural beauty of Dunrobin becomes part of the home's essence, serving as natural artwork. "There are numerous places within the home where you can see outside in every direction," says Jeff.

One of those places is the great room, with its sky-high vaulted ceilings, expansive windows with double sliding doors and minimalist furniture. The soft, purse-leather sofa from **Phillip Van Leeuwen Art of Furniture** is a creamy modern lounge that makes watching sunsets or stargazing through the panoramic windows ideal. A comfy floor pillow for the pooch, Voodoo, was also added. The other furniture pieces from Van Leeuwen include a gleaming arc floor lamp accentuating the room's height and a multi-layered coffee table that replicates wood grain but with the right hint of modern aesthetic flair.

Continued on page 28

Jeff and Nancy love the outdoors and decided to opt out of window treatments to let the natural light in. **BELOW:** The couple enjoy relaxing in their custom-built home in between activities outside in the snow. **BELOW RIGHT:** The chandelier complements the glass staircase that leads up from the home's entrance into the living space.





Anchoring the room is an entertainment wall with Black Rundle Pro-fit Alpine Ledge stone and smoke-coloured, built-in shelves that pillar either side of a snugly recessed television. A design of Jeff's, it incorporates the same stone found on the home's exterior and expertly marries the modern and rustic inspiration they loved in Brian's work. They utilize the great room regularly by hosting workshops, out-of-town speakers and the occasional Bond-theme party. During warmer months, guests spill through the double-sliding glass doors to a sizeable white cedar terrace, taking full advantage of views of the river and Gatineau Hills. "Since the terrace is adjacent to the slope of the property's ridge, it's a full storey high at the front and steps from the ground at the rear," says Brian.



TOP LEFT: Jeff designed this unit to fit the home. **ABOVE:** Another unique light from Multi Luminaire hangs over the dining table. **RIGHT:** The crystal tabletop adds a sense of elegance and protects the reclaimed wood underneath. **OPPOSITE:** The sleek fireplace warms up this soft dining room.

From the great room, it's easy to admire the four separate angles of the home's architectural design, with cleverly placed porthole windows that take advantage of natural light and the southerly sun. A long, sleek gas fireplace from **Harding The Fireplace Ltd.** warms the cosy dining room, making it the perfect place to spend time long after meals are finished. The Van Leeuwen table, made from rustic reclaimed wood and protected by a crystal glass top, is accentuated with soft chairs. A "beyond thunderdome" chrome light, as Jeff calls it, casts intricate shadows in the space. In fact, the couple decorated the entire home themselves. Jeff and Nancy picked out all the lighting from **Multi Luminaire**, including the glamorous, chrome, fire-pendant chandelier that hangs in the stairway above their foyer with custom wood and glass railings. *Continued on page 30*



The open concept allows for the two-time, award winning kitchen by **Darren Walker** of **Kitchen Craft Cabinetry** to be justly admired. Gorgeous natural bamboo cabinets are accented with dark maple columns painted the colour of thunder and bookending fine GE Monogram stainless steel appliances from **Corbeil Appliances**. Thick Silestone quartz countertops waterfall to the floor and an astonishing custom, raised island, designed by Darren and built by **Threshold Design**, brings the wow factor.

“Jeff really wanted the island to be a feature piece, so I designed a raised bar made from concrete,” says Darren. “Jeff and Nancy loved this idea from the moment they saw it in my design work. This is one of my favorite kitchen designs to date. They knew exactly what they wanted. I took their great ideas and just added a few elements.”

In lieu of a kitchen window, Jeff and Nancy smartly made the decision to add a skylight and use the wall space above their stove to add punchy Luxe Rouge tiles from **Ceragres**. They enjoyed working with associate **Tanya Phillips** so much that they partnered on all the tiles in their home, including their stylish en suite bathroom. *Continued on page 32*



Jeff and Nancy knew exactly what they wanted for their kitchen. The island was designed to be the focal point of the room.



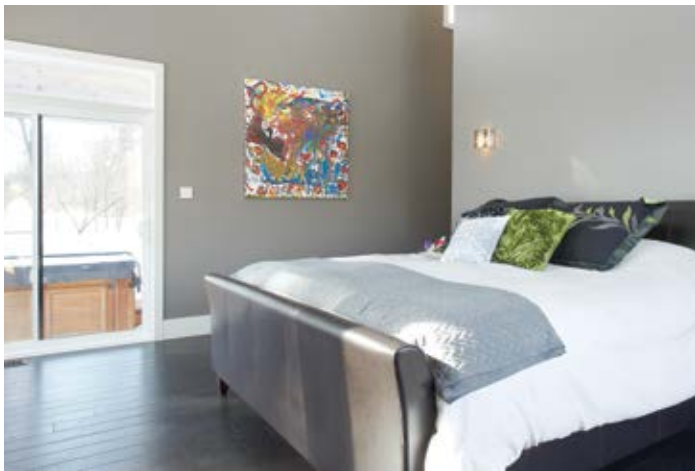
Every Maple Leaf Custom Home is based on thoughtful design, attention to detail and customer service second to none.
Your creative options are only limited to your imagination.



Greater Ottawa
Home Builders'
Association

GOHBA Award Winner - 2014 Best Custom Home under 2400 sq. ft. with Christopher Simmonds Architect

613.832.4757 ext. 221 | www.mapleleafcustomhomes.ca



For Jeff, the master bedroom and spa-like en suite is his euphoria. “It’s very zen,” Jeff says of his favourite space in the house. With picturesque windows on three sides of the master, it’s not uncommon to wake up and see wildlife. To maximize comfort, a remote-control system from Moen warms the grand, resort-inspired tiled shower to your precise temperature with the click of a button. Radiant-heated floors, made to look like polished concrete, make for easy mornings. Nearby, a space-saving white acrylic bathroom vanity with sea green glass was brought in specifically from Montreal. The glorious sunken bathtub strategically placed next to a window enables bathers to soak up all of nature.

The McAllisters may need to check the guest list at their next Bond party because, with their chic and sophisticated home, a certain 007 might just come to visit... or stay. **OH**

LEFT: The unique shape of this house shows beautifully in the snow. **ABOVE:** The hot tub sits just outside the bedroom and can be accessed from both this room and the kitchen, great for a soak under the stars on a cold winter’s night. **BOTTOM LEFT:** A simple, sleek en suite bathroom completes the bedroom with elements from Bath Depot. **BELOW:** Jeff smiles as he talks about his garage and his toys!



FURNITURE

AFFAIRS

ReUpholstery/ReFinishing

ECO Furniture
for healthy living

info@furnitureaffairs.ca

613-680-2139

Show Room Located Downtown
250 City Centre, unit 222 Upper Level

Celebrating 50 years of excellence, Barwood Flooring is Ottawa’s Premier leading flooring specialist. Our Showroom, located in Nepean, will mesmerize you with a wide array of the finest quality of flooring selections such as **HARDWOOD, CORK, LAMINATE, LEATHER, HAND-SCRAPED, ENGINEERED, VINYL, STAIR REFACING** to reflect your home’s sophistication and to suit every style and budget. Our sales consultants are highly knowledgeable with our products and will respond to any of your questions. Estimates are **FREE**. Our warehouse is a humidity-controlled environment, unique in Ontario.

BARWOOD
FLOORING

“Flooring for life.”

ONE MAIN LOCATION TO SERVE YOU:
155 Colonnade Road S, NEPEAN | T: 613-225-0296
www.barwoodflooring.com

Celebrating
50
Years
of
Flooring
Excellence

mirage

Hardwood Floors

Mirage White Oak RQ Isla - Alive Collection

32 | ourhomes WINTER 2015